

FB 702

C. H. No. 79
 Bloomfield Township
 Sec. 22 T-7 R-8

C. H. No. 79

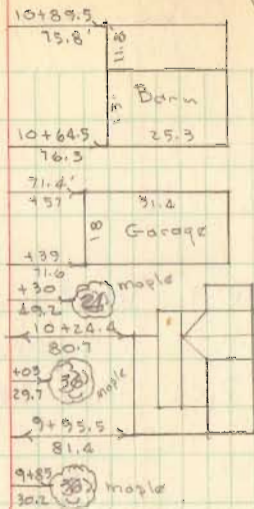
45' From Rd. #13 to Rd 60
 Vol. 10 pg. 134 & 163 (1853)

36' From Rd. 60 South to angle
 west.
 Rd. Rec. 3 pg. 306-315 (1911)

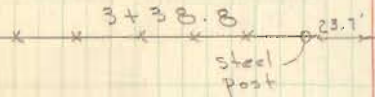
0+00 Iron @ intersection C.H. # 79 & 13
 Iron found - placed 1 1/4" pipe flush
 with roadway surface

Dodson
 Detrick
 Gilbert

May 13, 1958
 25



18" C.M.P.
 Sta. 7+36.5



3459

INDEXED ON MAP

Iron Found
 Sta. 0+00

C. H. No. 13
 South

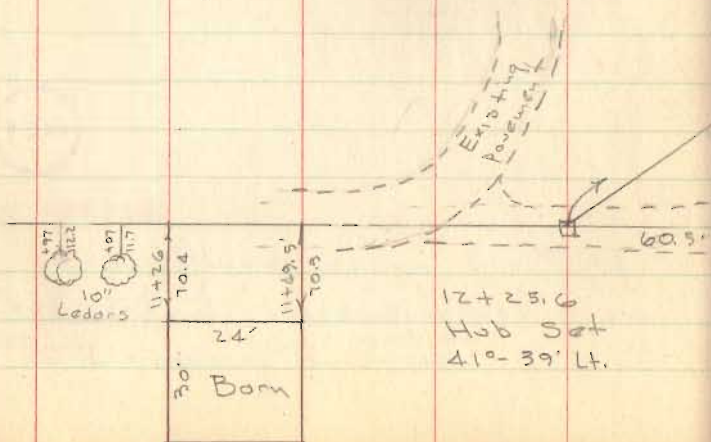
FB 702

C. H. No. 79

19+17.83	P. T.	R. R. spk set	$\Delta = 47^{\circ} 35'$ $D = 150.00'$
17+68.58	P. I.	R. R. spk. set	$R = 383.07'$ $T = 168.88'$
15+99.70	P. C.	Hub Set	$L = 318.13$

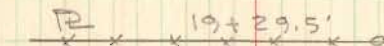
13+58.36	P. T.	Hub Set	$\Delta = 41^{\circ} 39'$ $D = 150.00$
12+25.6	PI - Hub Set		$R = 383.07'$ $T = 145.71'$
10+79.90	P. C.	R. R. spk set.	$L = 278.46$

11+14.6 R. R. spk set - P. O. T.

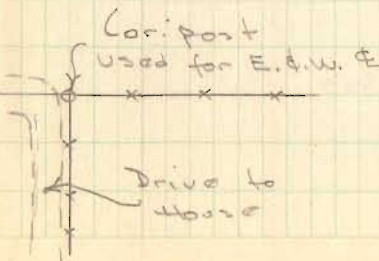
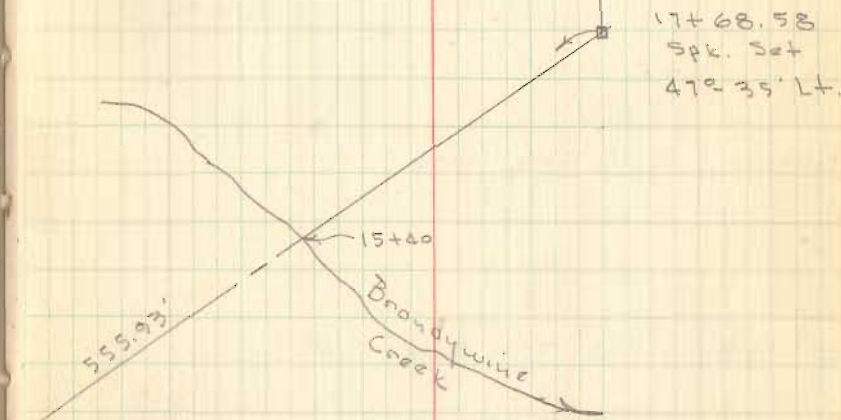


26

Millard Notestine



Homer Notestine



3459

INDEXED ON MAP

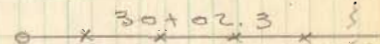
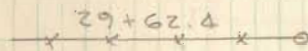
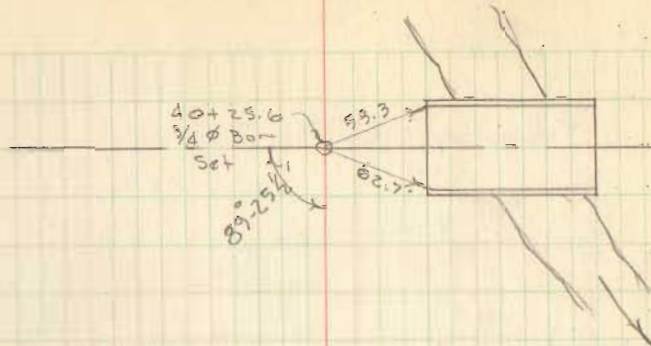
FB 702

40+25.6 3/4" ϕ Iron set @ E.C.H. #60

30+00 R.R. Spk set

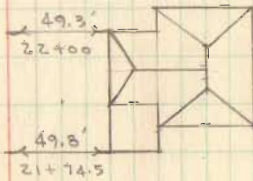
24+35.3 P.O.T. - Spk. set

21+87.9 P.O.T. - Spk set



Notestine
Millard

Notestine
Millard



3459