

Received 10-26-88

OK 10-27-89



Lee Surveying and Mapping Co.



Farm Surveys • Lot Surveys • Topography • Subdivisions • Construction Layout

143 EAST COLUMBUS AVENUE
BELLEFONTAINE, OHIO 43311

(513) 593-7335
(513) 593-5780

CLAYTON M. LEE, P.S.
JEFFREY I. LEE, P.S.

PIPPIN SURVEY (2.00 ACRES)

Lying in the northeast quarter of Section 28, T-2, R-8, Bloomfield Township, Logan County, Ohio.

Being out of that 139.69 acres in the name of Julia Zahn as deeded and described in O.R. 75, Page 313 of the Logan County Records of Deeds and being more particularly described as follows:

Beginning at a railroad spike found on the center-line of County Highway 34, marking the southeast corner of a 1 acre tract (Whitehead, O.R. 29, Page 526).

THENCE, on the line between Whitehead and the R. Cron 65 acres (O.R. 75, Page 231), S 89°-07'-20" W, 264.46 feet to a 1/2" iron rod set on the southwest corner of the said 1 acre tract. THE TRUE POINT OF BEGINNING.

THENCE, with the line between the Cron land and the said Zahn land and continuing S 89°-07'-20" W, a distance of 188.18 feet to a 1/2" iron rod (set).

THENCE, N 0°-40'-20" W, a distance of 584.45 feet to a railroad spike set on the center-line of County Highway 34.

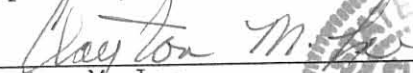
THENCE, with said center-line, S 38°-30'-22" E, a distance of 306.79 feet to a railroad spike set at the north corner of the aforesaid 1 acre tract.

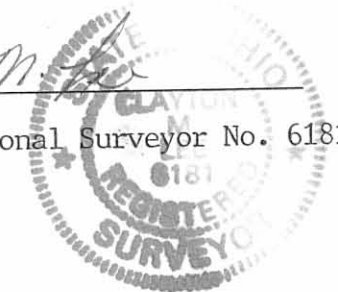
THENCE, with the west line of said 1 acre tract, S 0°-40'-20" E, a distance of 341.47 feet to the point of beginning.

Containing 2.00 acres.

This description prepared from an actual field survey.
Basis for bearings: Center-line of County Highway 34 = S 38°-30'-22" E.

Prepared by:


Clayton M. Lee
Registered Professional Surveyor No. 6181
October 24, 1989



ORIGINAL STAMP IN

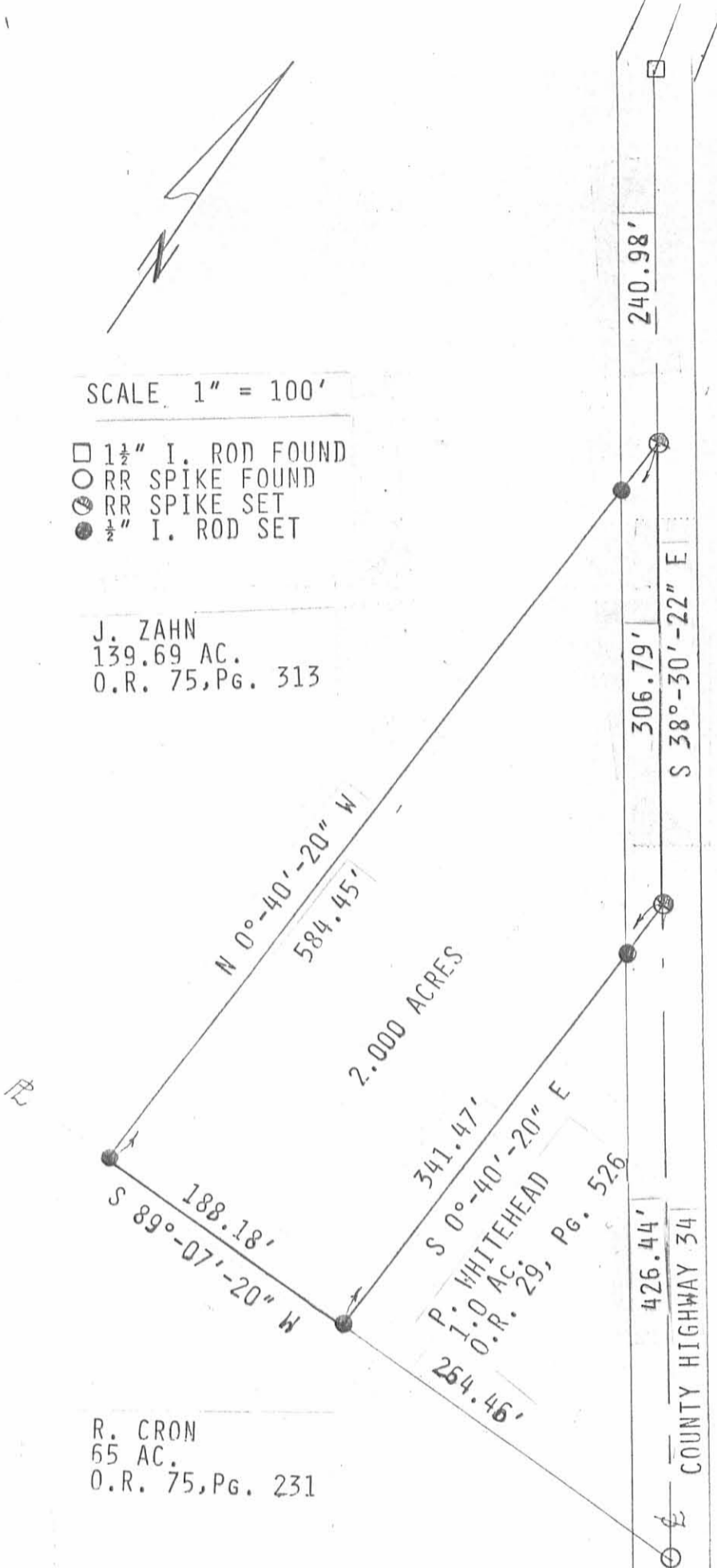
INDEXED ON MAP
5403 1D



SCALE 1" = 100'

- 1 1/2" I. ROD FOUND
- RR SPIKE FOUND
- ⊙ RR SPIKE SET
- 1/2" I. ROD SET

J. ZAHN
 139.69 AC.
 O.R. 75, Pg. 313



R. CRON
 65 AC.
 O.R. 75, Pg. 231

SURVEY OF 2.000 ACRES OUT OF THE
 JULIA ZAHN 139.69 ACRE TRACT
 (O.R. 75, Pg. 313)
 N.E. 1/4, SECTION 28, T-2, R-8
 BLOOMFIELD TOWNSHIP, LOGAN COUNTY, OHIO

SURVEYED BY

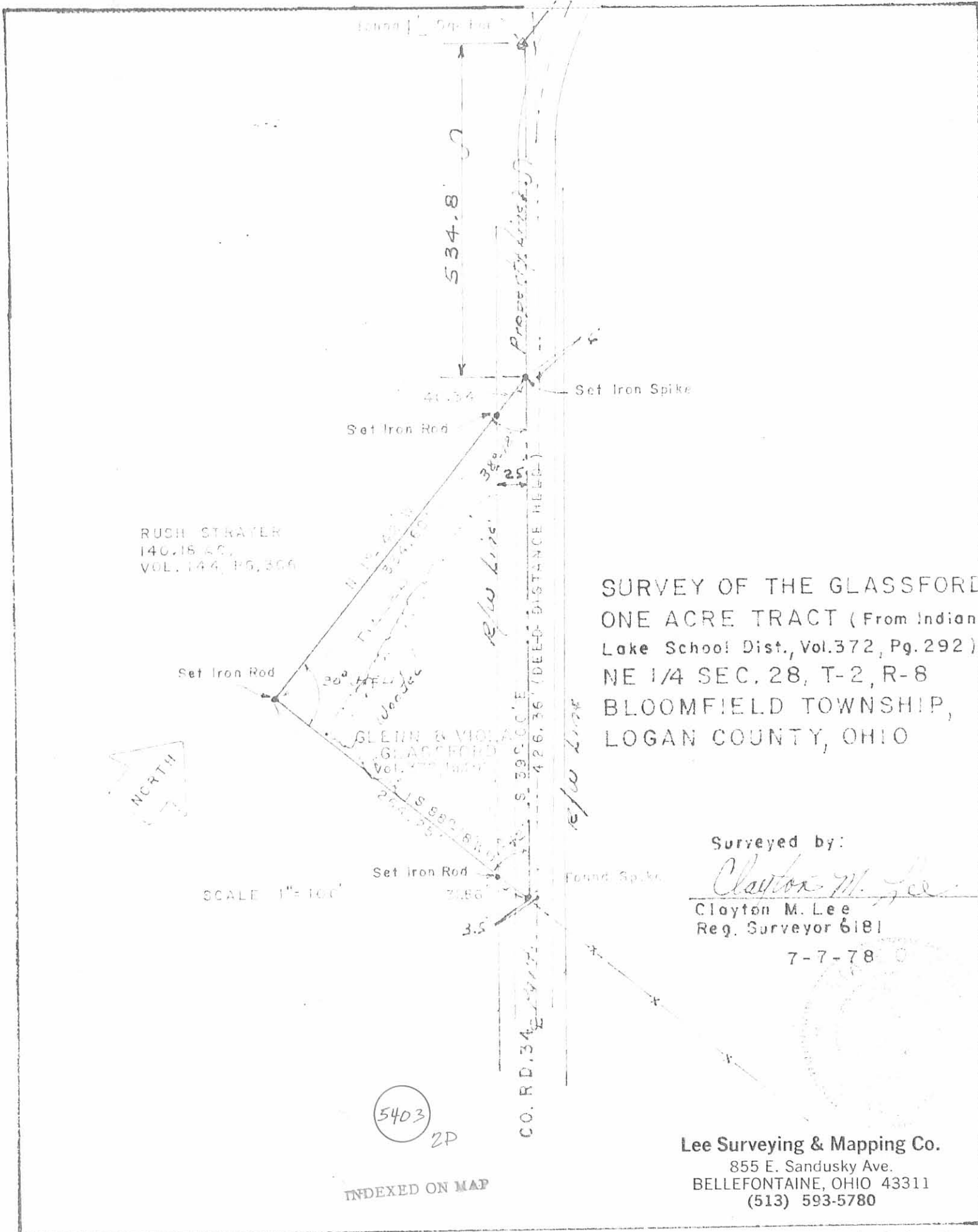
JEFFREY V. LEE
 PROFESSIONAL SURVEYOR NO. 6359
 OCTOBER 20, 1989



ORIGINAL STAMP IN GREEN

INDEXED ON MAP
 540.3 IP

LEE SURVEYING & MAPPING CO.
 143 East Columbus Avenue
 BELLEFONTAINE, OHIO 43311
 (513) 593-7335



SURVEY OF THE GLASSFORD ONE ACRE TRACT (From Indian Lake School Dist., Vol. 372, Pg. 292), NE 1/4 SEC. 28, T-2, R-8 BLOOMFIELD TOWNSHIP, LOGAN COUNTY, OHIO

Surveyed by:
Clayton M. Lee

Clayton M. Lee
 Reg. Surveyor 6181

7-7-78

5403
 2D

INDEXED ON MAP

Lee Surveying & Mapping Co.
 855 E. Sandusky Ave.
 BELLEFONTAINE, OHIO 43311
 (513) 593-5780