

REC'D 10-24-02 SMM AL

Lee Surveying and Mapping Co., Inc.

Land Surveys • Topography • Subdivisions • Construction Layout

117 N. Madriver St.
Bellefontaine OH 43311



Phone: (937) 593-7335
Fax: (937) 593-7444

BAKER 2.000 ACRES

Lying in Section 19, Town 7, Range 8, Bloomfield Township, Logan County, Ohio.

Being out of the Dale L. Baker, Trustee, 38.75 acre tract as deeded and described in Official Record 393, Page 1, Tract II, of the Logan County Records of Deeds and being more particularly described as follows:

Beginning at a stone found in a monument box on the southeast corner of the northeast quarter of Section 19 at the intersection of the center-lines of County Highway 60 and County Highway 35.

THENCE, with the east line of Section 19 and the center-line of County Highway 35 (60 feet wide), N 0°-00'-00" E, a distance of 1330.00 feet to a MAG nail set at the TRUE POINT OF BEGINNING.

THENCE, with the north line of the Frederick S. Hoffman original 78.687 acre tract (O.R. 359, Pg. 281), N 89°-35'-03" W, a distance of 382.60 feet to a 5/8 inch iron rod set, passing a 5/8 inch iron rod set at 30.00 feet.

THENCE, N 0°-00'-00" E, a distance of 368.64 feet to a 5/8 inch iron rod set.

THENCE, N 90°-00'-00" E, a distance of 382.59 feet to a MAG nail set, passing a 5/8 inch iron rod set at 352.59 feet.

THENCE, with the east line of Section 19 and the center-line of County Highway 35, S 0°-00'-00" W, a distance of 20.00 feet to a railroad spike found.

THENCE, with the north line of the Patrick Joseph Greve 1.250 acre tract (Vol. 405, Pg. 773), N 90°-00'-00" W, a distance of 243.00 feet to a 5/8 inch iron rod set, passing a 5/8 inch iron rod set at 30.00 feet.

THENCE, with the west line of the said 1.250 acre tract, S 0°-00'-00" W, a distance of 224.01 feet to a 5/8 inch iron rod found.

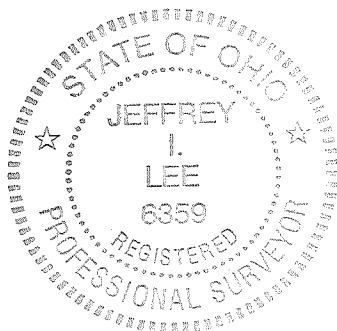
THENCE, with the south line of the said 1.250 acre tract, N 90°-00'-00" E, a distance of 243.00 feet to a railroad spike found, passing a 5/8 inch iron rod set at 213.00 feet.

THENCE, with the east line of Section 19 and the center-line of County Highway 35, S 0°-00'-00" W, a distance of 127.40 feet to the point of beginning.

Containing 2.000 acres, of which 0.101 acre is within the highway right-of-way.

The basis for bearings is the east line of Section 19, being N 0°-00'-00" E, and all other bearings are from angles and distances measured in a field survey by Lee Surveying and Mapping Co., Inc. on October 10, 2002.

Description prepared by:



ORIGINAL STAMP IN GREEN

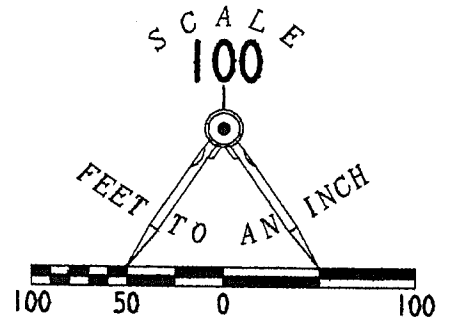
Jeffrey I. Lee
Professional Surveyor 6359
October 21, 2002

L-3455



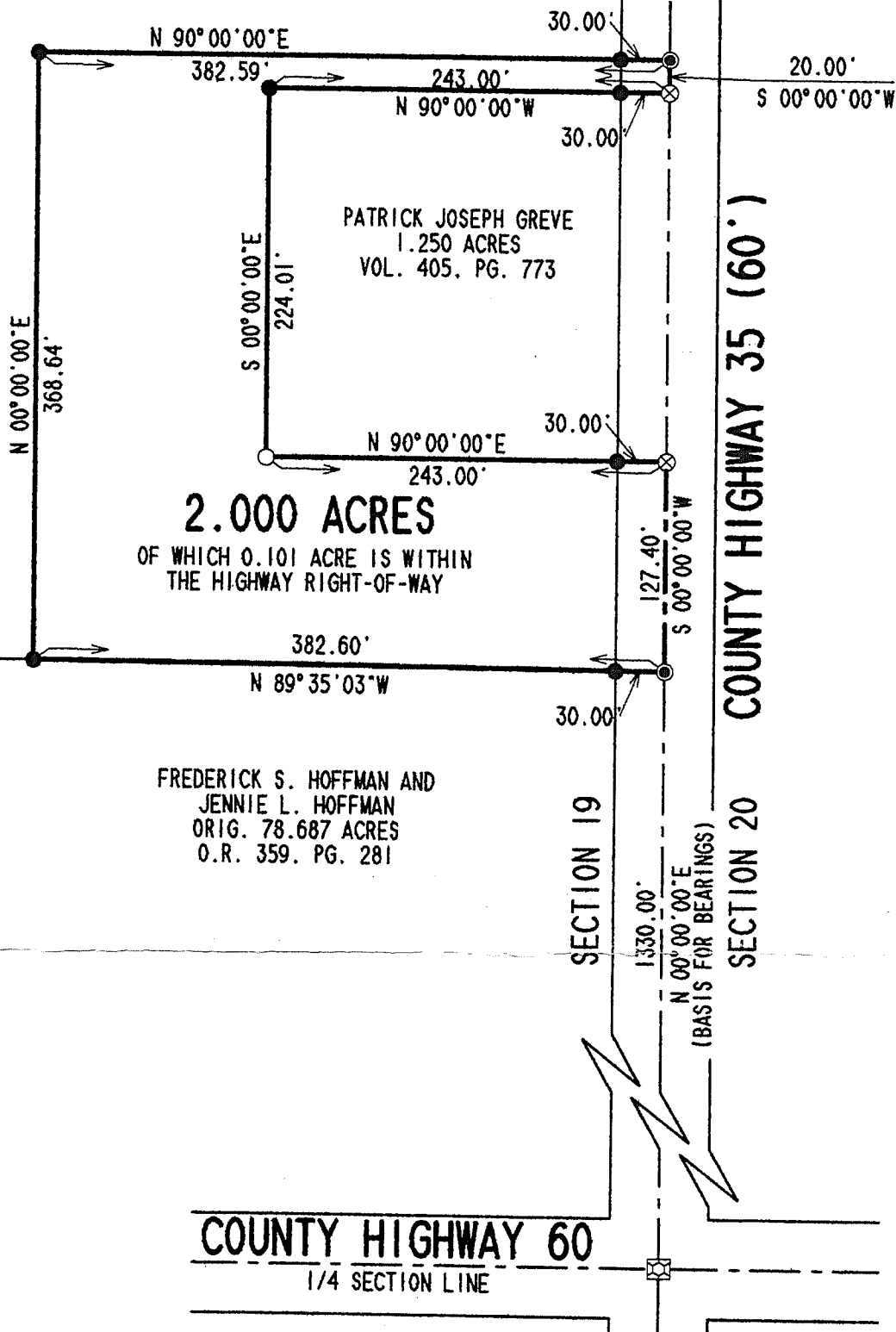
DEED: 10-24-02 BMY/ALC

DALE L. BAKER, TRUSTEE
38.75 ACRES
O.R. 393, PG. 1
TRACT 11



LEGEND

- 5/8 INCH IRON ROD SET
- 5/8 INCH IRON ROD FOUND
- MAG NAIL SET
- ⊗ RAILROAD SPIKE FOUND
- ⊠ STONE FOUND IN A MONUMENT BOX



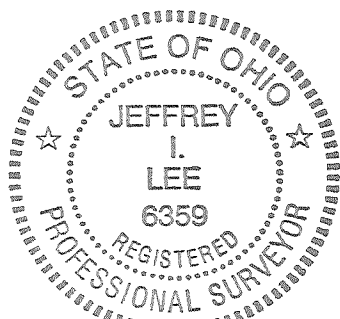
2.000 ACRES
OF WHICH 0.101 ACRE IS WITHIN
THE HIGHWAY RIGHT-OF-WAY

FREDERICK S. HOFFMAN AND
JENNIE L. HOFFMAN
ORIG. 78.687 ACRES
O.R. 359, PG. 281

COUNTY HIGHWAY 35 (60')

COUNTY HIGHWAY 60
1/4 SECTION LINE

**SURVEY OF 2.000 ACRES OUT OF
DALE L. BAKER, TRUSTEE
ORIGINAL 38.75 ACRE TRACT
OFFICIAL RECORD 393, PAGE 1, TRACT 11
SECTION 19, TOWN 7, RANGE 8
BLOOMFIELD TOWNSHIP
LOGAN COUNTY, OHIO**



ORIGINAL STAMP IN GREEN

SURVEYED BY:

JEFFREY I. LEE
PROFESSIONAL SURVEYOR 6359
OCTOBER 10, 2002

COPYRIGHT 2002 BY:
LEE SURVEYING & MAPPING CO., INC.
117 North Madriver Street
BELLEFONTAINE, OHIO 43311
(937) 593-7335

D 407

BGREVE

L-3455-3

2 WORKING DAYS
BEFORE YOU DIG
CALL TOLL FREE **800-362-2764**
OHIO UTILITIES PROTECTION SERVICE.

INDEXED ON MAP
7074 IP

William G. Fultz, Jr. & Associates

PROFESSIONAL SURVEYOR
1310 HICKORY COURT
SIDNEY, OHIO 45365
492-9674

COOVER DESCRIPTION

Part of the North Half of the East Half
of the Northeast Quarter of Section 19,
T7S, R8E, Bloomfield Twp., Logan Co., Ohio:

Commencing at an iron pin found in the northeast
corner of said section 19; thence Due South, along the
east line of said section 19, (C.R. No.35), 980.00 ft.
to a RR Spike and the place of beginning for the following
described real estate:

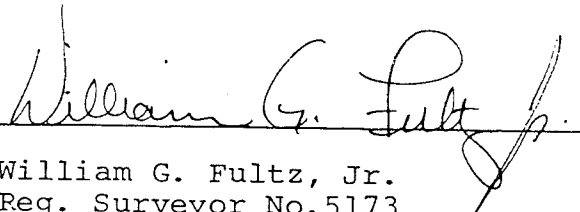
Thence continuing Due South, along said east line,
224.00 ft. to a RR Spike;

Thence Due West, 243.00 ft. to an iron pin;

Thence Due North, 224.00 ft. to an iron pin;

Thence Due East, 243.00 ft. to the place of beginning.

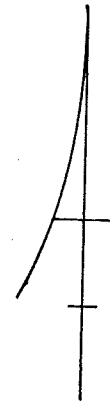
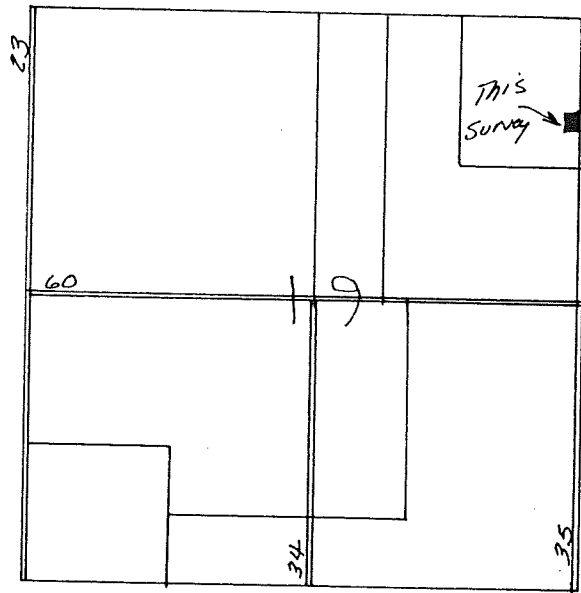
Containing 1.250 Ac. more or less, being subject to
all legal highways and easements of record, the grantor
also grants to the grantee a perpetual sanitary tile
easement from the premises herein conveyed into adjacent
tile fields, and being part of the premises recorded as
the second tract in Vol.302 Pg.47 of the Logan County
Deed Records.


William G. Fultz, Jr.
Reg. Surveyor No.5173

7074 2D

INDEXED ON MAP

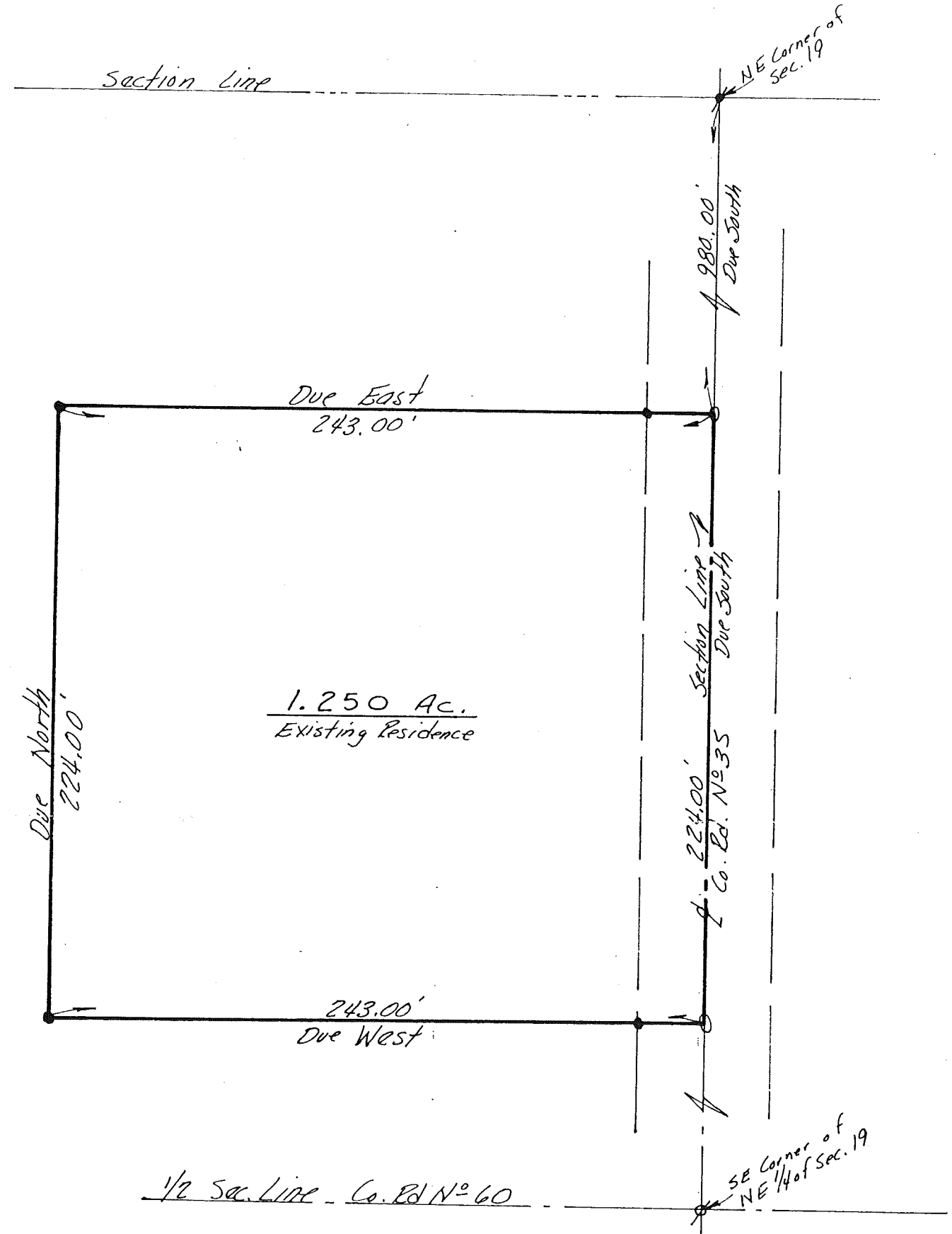
COOVER SURVEY
 Part of the Northeast Quarter of Sec. 19, T7S,
 R8E, Bloomfield Twp, Logan Co., Ohio



1" = 50'
 Assumed Bearing
 OWNER:
 Nelson F. Coover
 Vol. 302 Pg. 47
 part of Tract Second
 at 564 CE. N^o 35

- ⊕ = IP found
- ⊙ = RR Spt found
- = RR Spt set
- = 5/8" rebar set

7074 2P



SURVEYED 7 July 1984
William G. Fultz, Jr.
 REG. SURVEYOR N^o 5173