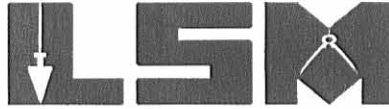


REC'D 10-9-06 SML/OK

Lee Surveying and Mapping Co., Inc.

Land Surveys • Topography • Subdivisions • Construction Layout

117 N. Madriver St.
Bellefontaine OH 43311



Phone: (937) 593-7335
Fax: (937) 593-7444

1975-2005 - 30 YEARS OF EXCELLENCE

**DAVIS, ETAL
1.046 ACRES**

Lying in Section 24, Town 7, Range 7, Bloomfield Township, Logan County, Ohio.

Being out of the Patty L. Davis, Jerry D. Metz, Rhonda J. Burch, Sherilyn M. Metz and Earnest A. Metz 71.343 acre tract as deeded and described in Official Record 805, Page 187, Tract No. 1 of the Logan County Records of Deeds and being more particularly described as follows:

Commencing at a stone found in a monument box at the southeast corner of Section 24 on the center-line of Township Road 23.

THENCE, with the east line of Section 24 and the center-line of Township Road 23 (60 feet wide), N 1°-14'-00"E, a distance of 671.73 feet to a MAG nail set at the TRUE POINT OF BEGINNING.

THENCE, N 88°-27'-59"W, a distance of 248.90 feet to a 5/8 inch iron rod set, passing a 5/8 inch iron rod set at 30.00 feet.

THENCE, N 1°-14'-00"E, a distance of 183.00 feet to a 5/8 inch iron rod set.

THENCE, S 88°-27'-59"E, a distance of 248.90 feet to a MAG nail set on the east line of Section 24 and the center-line of Township Road 23, passing a 5/8 inch iron rod set at 218.90 feet.

THENCE, with the east line of Section 24 and the center-line of Township Road 23, S 1°-14'-00"W, a distance of 183.00 feet to the point of beginning.

Containing 1.046 acres, of which 0.126 acre is within the highway right-of-way.

The basis for bearings is the east line of Section 24, being N 1°-14'-00"E, and all other bearings are from angles and distances measured in a field survey by Lee Surveying and Mapping Co., Inc. on October 4, 2006.

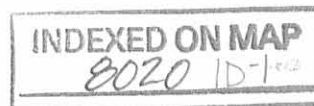


ORIGINAL STAMP IN GREEN

Description prepared by:

Jeffrey I. Lee
Professional Surveyor 6359
October 4, 2006

3361086

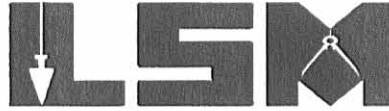


REC'D 10-9-06 JML/ek

Lee Surveying and Mapping Co., Inc.

Land Surveys • Topography • Subdivisions • Construction Layout

117 N. Madriver St.
Bellefontaine OH 43311



Phone: (937) 593-7335
Fax: (937) 593-7444

1975-2005 - 30 YEARS OF EXCELLENCE

**DAVIS, ETAL
1.004 ACRES**

Lying in Section 24, Town 7, Range 7, Bloomfield Township, Logan County, Ohio.

Being out of the Patty L. Davis, Jerry D. Metz, Rhonda J. Burch, Sherilyn M. Metz and Earnest A. Metz 71.343 acre tract as deeded and described in Official Record 805, Page 187, Tract No. 1 of the Logan County Records of Deeds and being more particularly described as follows:

Commencing at a stone found in a monument box at the southeast corner of Section 24 on the center-line of Township Road 23.

THENCE, with the east line of Section 24 and the center-line of Township Road 23 (60 feet wide), N 1°-14'-00"E, a distance of 579.99 feet to a MAG nail set at the TRUE POINT OF BEGINNING.

THENCE, N 88°-27'-59"W, a distance of 325.00 feet to a 5/8 inch iron rod set, passing a 5/8 inch iron rod set at 25.00 feet.

THENCE, N 1°-14'-00"E, a distance of 274.74 feet to a 5/8 inch iron rod set.

THENCE, S 88°-27'-59"E, a distance of 76.10 feet to a 5/8 inch iron rod set.

THENCE, S 1°-14'-00"W, a distance of 183.00 feet to a 5/8 inch iron rod set.

THENCE, S 88°-27'-59"E, a distance of 248.90 feet to a MAG nail set on the east line of Section 24 and the center-line of Township Road 23, passing a 5/8 inch iron rod set at 218.90 feet.

THENCE, with the east line of Section 24 and the center-line of Township Road 23, S 1°-14'-00"W, a distance of 91.74 feet to the point of beginning.

Containing 1.004 acres, of which 0.063 acre is within the highway right-of-way.

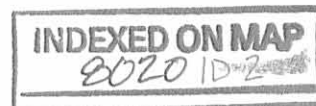
The basis for bearings is the east line of Section 24, being N 1°-14'-00"E, and all other bearings are from angles and distances measured in a field survey by Lee Surveying and Mapping Co., Inc. on October 4, 2006.



ORIGINAL STAMP IN GREEN

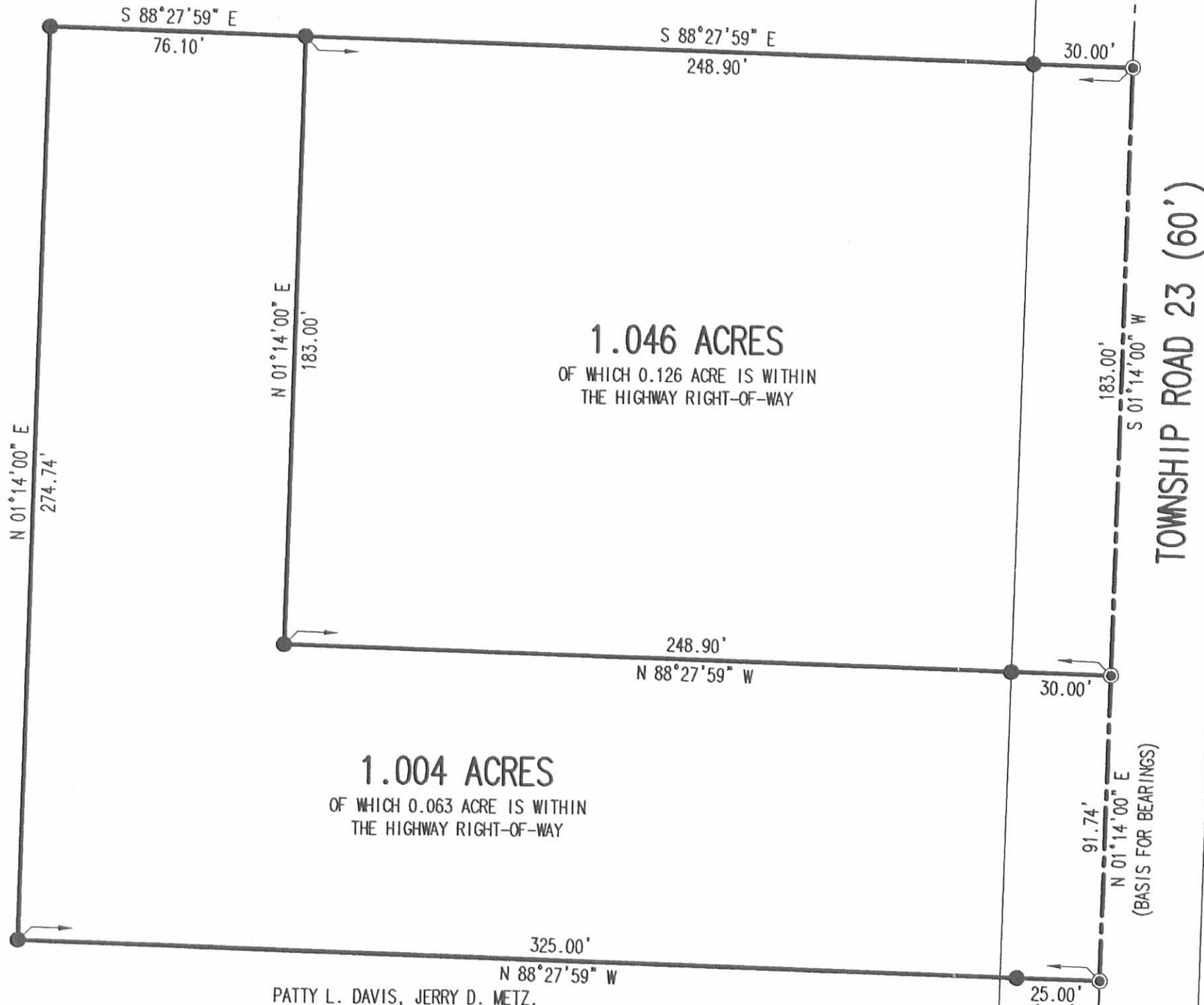
Description prepared by:

Jeffrey I. Lee
Professional Surveyor 6359
October 4, 2006

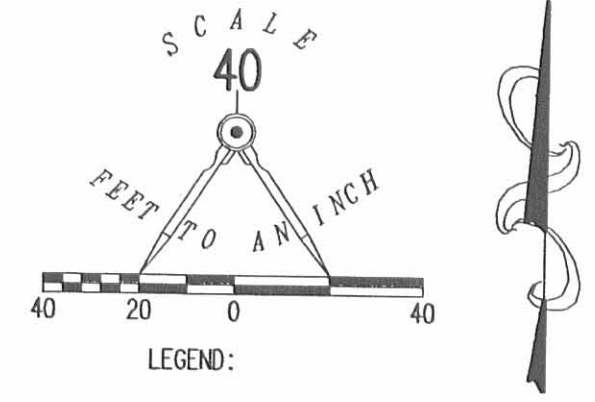


3361086

REC'D 10-9-06 SMJ/OK



PATTY L. DAVIS, JERRY D. METZ,
RHONDA J. BURCH, SHERILYN M. METZ
AND EARNEST A. METZ
71.343 ACRES
O.R. 805, PG. 187
TRACT NO. 1



SURVEY OF TWO TRACTS OUT OF THE
PATTY L. DAVIS, JERRY D. METZ,
RHONDA J. BURCH, SHERILYN M. METZ
AND EARNEST A. METZ
71.343 ACRE TRACT
OFFICIAL RECORD 805, PAGE 187
TRACT NO. 1
SECTION 24, TOWN 7, RANGE 7
BLOOMFIELD TOWNSHIP
LOGAN COUNTY, OHIO

SURVEYED BY:



Jeffrey I. Lee
JEFFREY I. LEE
PROFESSIONAL SURVEYOR 6359
OCTOBER 4, 2006

COPYRIGHT 2006 BY:
LEE SURVEYING & MAPPING CO., INC.
117 North Madriver Street
BELLEFONTAINE, OHIO 43311
(937) 593-7335

ORIGINAL STAMP IN GREEN

KSR D1006 3361086 L-3361-3

2 WORKING DAYS
BEFORE YOU DIG
CALL TOLL FREE **800-362-2764**
OHIO UTILITIES PROTECTION SERVICE.

INDEXED ON MAP
8020 IP

RICHARD A. BRUCE & ASSOC. INC.
637½ S. Main St.
Bellefontaine, Ohio 43311

METZ SURVEY
1.157 Ac. OUT OF 72.50 Ac.
SECTION 24, TOWN 7, RANGE 7
BLOOMFIELD TOWNSHIP
LOGAN COUNTY, OHIO

The following described real estate situated in the State of Ohio, County of Logan, Township of Bloomfield, being part of Section 24, Town 7, Range 7, and more particularly described as follows.

Beginning at a 5/8 inch iron bar set at the southeast corner of Section 24, and in the center of T.R. 23.

THENCE, with the south line of said Section 24, N.88°10'14"W. 240.00 feet to a 5/8 inch iron bar set, passing a 5/8 inch iron bar set at 30.00 feet.

THENCE, N.01°14'00"E. 210.00 feet to a 5/8 inch iron bar set.

THENCE, S.88°10'14"E. 240.00 feet to a railroad spike set in the center of T.R. 23, passing a 5/8 inch iron bar at 210.00 feet.

THENCE, with the center of T.R. 23, S.01°14'00"W. 210.00 feet to the point of beginning.

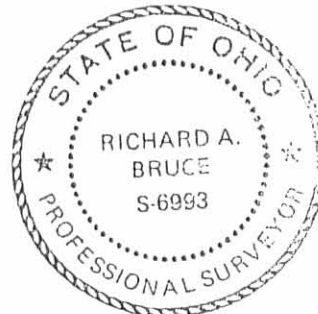
Containing 1.157 acres, more or less.

The above described 1.157 acre tract being part of Roy E. & Thelma A. Metz's 72.5 acre tract as described in Volume 302, Page 115.

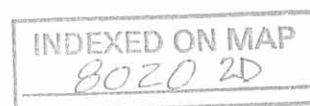
Basis for bearing: Centerline T.R. 23 = S.01°14'00"W.

This description prepared from an actual field survey.

Prepared by: Richard A. Bruce
Richard A. Bruce P.E., P.S.
Reg. Surveyor No. 6993
April 17, 1990



bb



Metz Survey - 1.157 ac. out of 72.50 ac.,
Section 24, Town 7, Range 7
Bloomfield Township
Logan County, Ohio

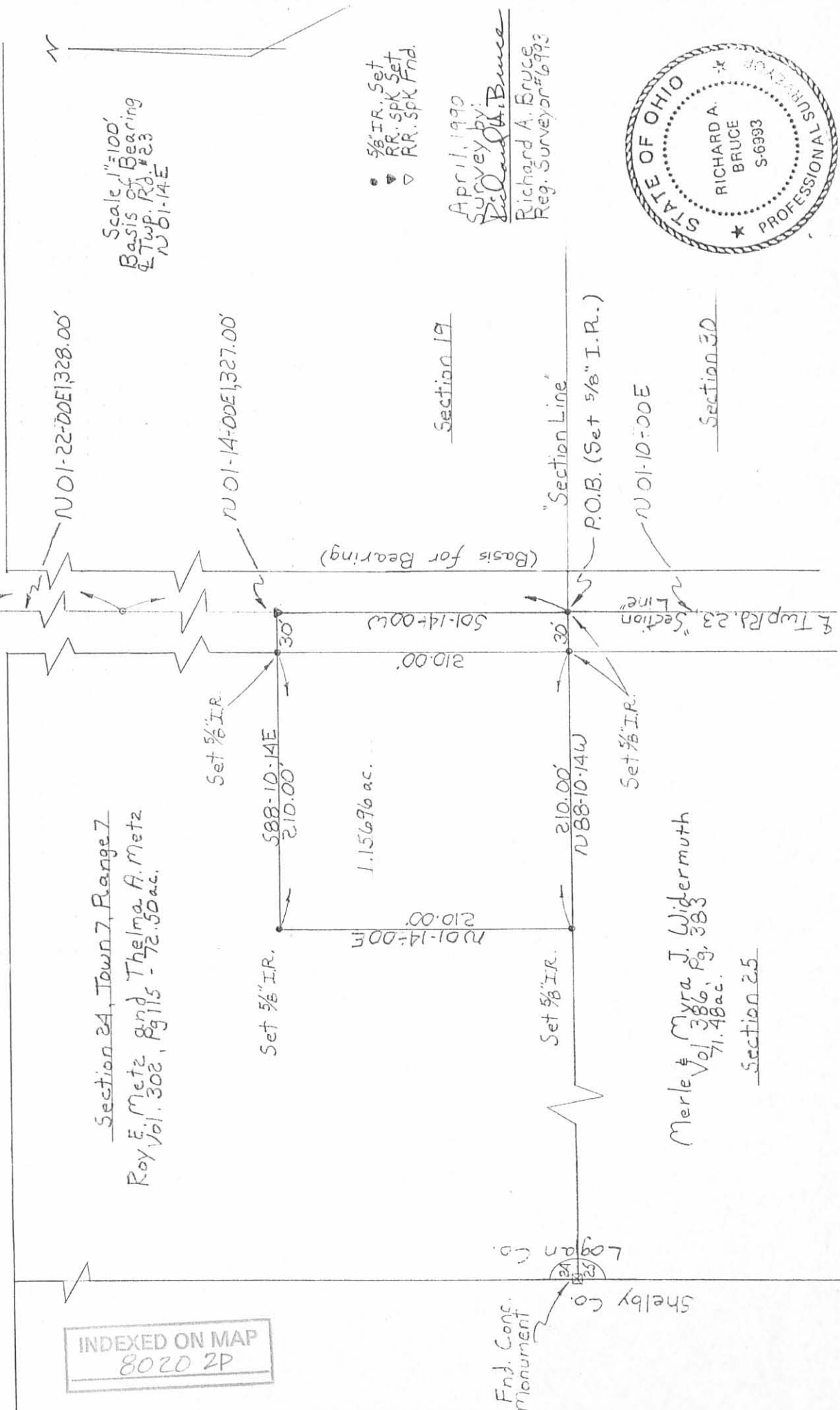
REF: LOGAN Co. FB #596, Pg. 8 - R.O.C.

R.R. SPK. Found & Co. Rd. 60

INDEXED ON MAP
8020 2P

Section 24, Town 7, Range 7
Roy E. Metz and Thelma A. Metz
Vol. 302, Pg. 115 - 72.50 ac.

Merle & Myra J. Wiggermuth
Vol. 386, Pg. 383
71.48 ac.
Section 25



- 5/8" I.R. Set
- ▼ RR. SPK SET
- ▽ RR. SPK Fnd.

April, 1990
Survey by:
Richard A. Bruce
Richard A. Bruce
Reg. Surveyor #6993

