



Lee Surveying and Mapping Co.



Farm Surveys • Lot Surveys • Topography • Subdivisions • Construction Layout

143 EAST COLUMBUS AVENUE
BELLEFONTAINE, OHIO 43311

(513) 593-7335

JEFFREY I. LEE, P.S.

PLATFOOT (3.926 ACRES)

Lying in Section 25, Town 2, Range 8, Bloomfield Township, Logan County, Ohio.

Being out of the Gerald H. Platfoot 102.0 acre tract as deeded and described in Deed Volume 349, Page 918 of the Logan County Records of Deeds and being more particularly described as follows:

Beginning at a 5/8 inch iron rod set S 89°-47'-00" E, a distance of 225.00 feet along the north line of said section from the northwest corner of Section 25.

THENCE, with the north line of Section 25 and the south line of the K. Wayne, Trustee 1.84 acre tract (Vol. 352, Pg. 309), S 89°-47'-00" E, a distance of 500.00 feet to a 5/8 inch iron rod set.

THENCE, S 00°-11'-12" W, a distance of 415.00 feet to a 5/8 inch iron rod set.

THENCE, N 89°-47'-00" W, a distance of 400.00 feet to a 5/8 inch iron rod set.

THENCE, N 00°-11'-12" E, a distance of 365.00 feet to a 5/8 inch iron rod set.

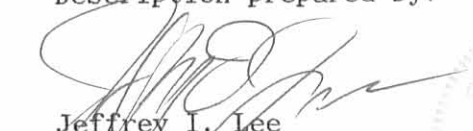
THENCE, N 89°-47'-00" W, a distance of 100.00 feet to a 5/8 inch iron rod set.

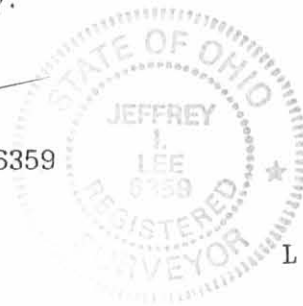
THENCE, N 00°-11'-12" E, a distance of 50.00 feet to the point of beginning.

Containing 3.926 acres of which 0.019 acre is within the right-of-way of Township Road 59.

The basis for bearings is based upon the north line of Section 27 being S 89°-47'-00" E, and all other bearings are from angles and distances measured in a field survey performed on December 11, 1990, by Lee Surveying and Mapping Company.

Description prepared by:


Jeffrey I. Lee
Professional Surveyor 6359
December 14, 1990



L 1884

INDEXED ON MAP
8094

TOWNSHIP ROAD 59

K. WAYNE, TRUSTEE
1.84 ACRES
VOL. 352, PG. 309

23 24
26 25

S 89° 47' 00" E 225.00'

S 89° 47' 00" E
500.00'

S 89° 47' 00" E
81.33'

N 00° 11' 12" E

50.00'

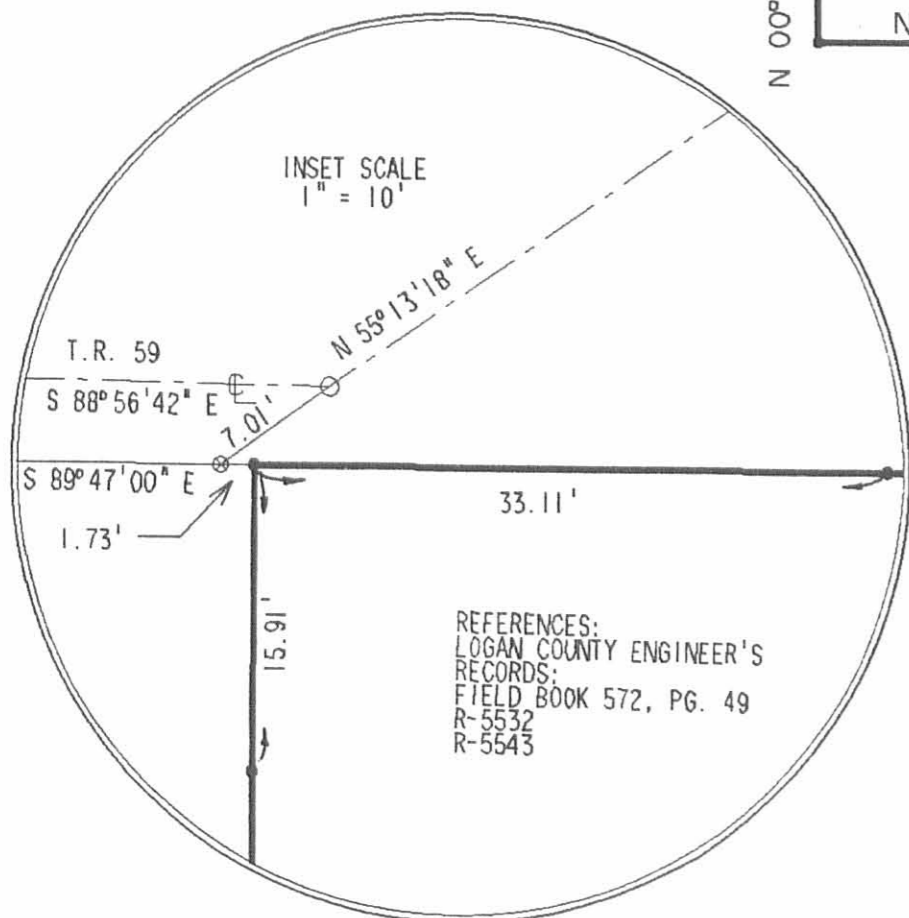
N 89° 47' 00" W
100.00'

N 00° 11' 12" E
365.00'

S 00° 11' 12" W
415.00'

3.926 ACRES

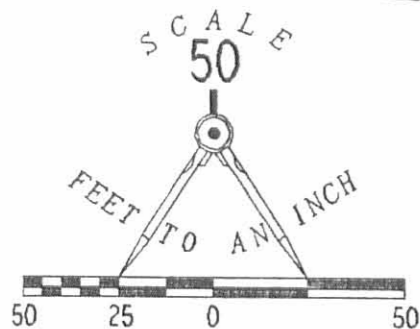
0.019 ACRE IS WITHIN THE
HIGHWAY RIGHT-OF-WAY



REFERENCES:
LOGAN COUNTY ENGINEER'S
RECORDS:
FIELD BOOK 572, PG. 49
R-5532
R-5543

LEGEND

- ⊙ 1-1/4" PIPE FOUND
- ⊗ RAILROAD SPIKE FOUND
- 1" I. ROD FOUND
- 5/8" I. ROD SET



SURVEY OF 3.926 ACRES OUT OF THE
GERALD H. PLATFOOT 102.0 ACRE TRACT
VOLUME 349, PAGE 918
SECTION 25, TOWN 2, RANGE 8
BLOOMFIELD TOWNSHIP
LOGAN COUNTY, OHIO



ORIGINAL STAMP IN GREEN

INDEXED ON MAP
8094

SURVEYED BY:

Jeffrey I. Lee
JEFFREY I. LEE
PROFESSIONAL SURVEYOR 6359
DECEMBER 11, 1990

LEE SURVEYING & MAPPING CO.
143 East Columbus Avenue
BELLEFONTAINE, OHIO 43311
(513) 593-7335