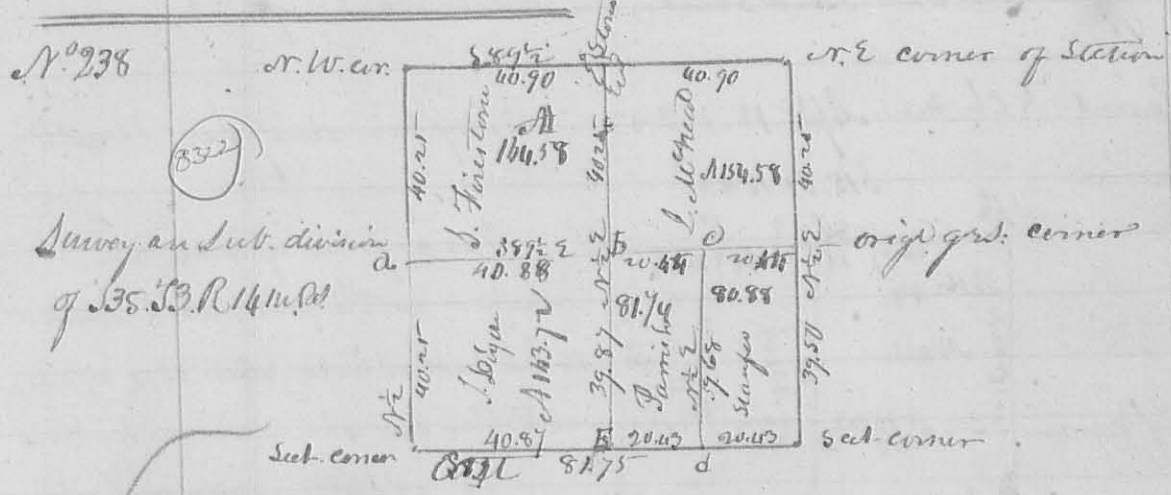


C Survey of the NW qr. of S. 6. T. 2 R. 14 N. and E half of S. E. qr. of S. 12 T. 2 R. 14. and W. half of S. E. D. the whole of the SW qr. of S. 12. for Mr. Rainier

and John Rainier. Adm. of 9d. 1834 beginning at the N.W. corner of Section N. 12. then S 89° E 120 ch. passing at 60 ch. corner at A between said Rainiers on their south line a Red Elm S 20° S 68° 17' Links, and Red Elm 40° N 76° 22' Links to corner at B. on the center of the south line of Sect. 6. a White Oak 12° S 74° 56' 27' Links. D 18° S 110° 33' Links. then N 2° E 40 chains to White Oak 18° S 135° 70' Links. D 26° W 142m 118 Links. then S 89° W 120 ch. passing corner at C. at 60 chains a W. Oak 60° N 60° 17' Links and Bur. oak 30° S 196° 52' Links. to White Oak 22° S 160° 22' Links. D 22° E. L. D. 170° 35' Links. then S 2° W 40 chains to the beginning. containing 240 acres, or 120 acres to each. tot. P. Shale. Elijah Blake ch. carrier. D. Hopkins Surveyor



Survey and sub. division of S. 5. T. 3. R. 14 N. 1834

Description of corners not marked on the plat. at a center of west line Stone planted at White Oak 22° S 136° 60' Links and White Oak 12° S 74° 58' Links. at b White Oak 18° S 138° 19' Links. and White Oak 12° S 79° 26' Links. at c White Oak 12° S 79° 26' Links. and White Oak 12° S 79° 26' Links. at d Stone. C Bur Oak 12° S 79° 26' Links and L. Red 12° S 79° 26' Links. John D. George & Muffin ch. men. D. Hopkins dep. Surveyor Feb. 9d. 1834.

N. 939 Survey of 1834 for Mr. Rogers part of S. 15. T. 3. R. 8 E. beginning at center of east line of the section then S 3° 50' E 60.37. dogwood 20° S 40° E 28° S 30° E 8° S 19° S 46° E then N 86° 10° E 20.12 to W. O. 4° S 66° 10' 11° S. Back 12° S 75° 27' E then N 3° 50' W 60.37 to an ash 40° S 22° W 7° E. Bur. O. 18° N 22° E 7° S then S 86° 10' W 20.12 to beginning. Cont. 7. 120 acres. W. K. Leplat & John Rogers ch. carrier. D. Hopkins dep. S. L. C.