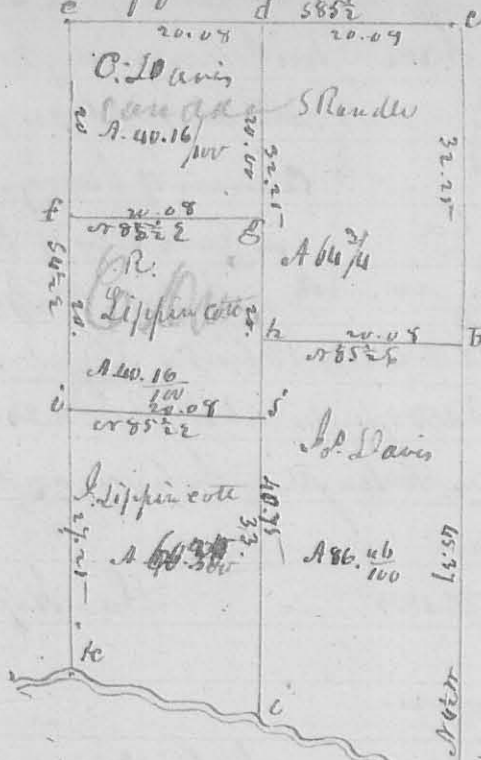


N^o 242

Sub. division of tract S. 23. T. 1. R. 8 E
5855

201.

(8326)



In the survey of this half of the tract. of the course and distance of the lines are marked on the plat. the Description of the corners, is as follows, beginning at
 A. original Sect. corner.
 B. N. 63 1/2 W 57 1/2 links, N. 0. 24 S 39 E 23 links - C Sect. corner.
 D. Hickory 24 1/2 S 40 E 10 links, and
 land 6. N 65 W 25 E. orig. corner
 E. Beech 10. W 71 W 18 links, and
 land 10. S 62 E 42 do.

at G. N. 0. 18 W S 42 E 13. & Beech 12 W
 and White oak 20. N 38 E 35 links. i R. O. 12 W S 73 W as Beech 18 S 85 E 42.
 j. Dogwood 3 W S 42 W 16 E. Gray alth 22 W N 11 W 34 links. k Stone - corner
 O. J. Mulberry 20 W S 86 E 18 E Elm 48. W N 86 W 12 links.

N. vs.

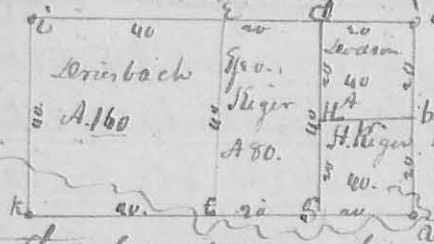
R. Lippincott
 G. Davis ch. carriers
 June 5th 1834

L. Hopkins Deputy Sur. S. C.

N^o 243

N. 52 1/2 S 78 E Lewis town Reser.

(8327)



this plat represents the sub. divi-
 sion of tract S. 28. T. 1. R. 8 E Lewis town
 Reservation, the lines run as follows
 N 3-50 W, and at right angles

then with the description of the corners is as follows. a 9th corner on east
 line of the section. b Hickory 8 W N 65 E 15 links. Ironwood 3 W S 30 W
 33 1/4 links. c Sect. corner. d Beech 8 W N 85 E 38 links. alth 24 W
 148 W 25 links e 9th corner. f 9th corner. on sub. division line back 24
 W S 30 E 32 Ironwood 3 W N 63 W 39 links. g. Beech 18 W N 4 W 12 links
 N. O. 3 1/2 W S 20 W 18 links. H. Sugar 22 W. corner tra

P. Hays
 J. Dillen } ch. carriers
 June 16. 1834

L. Hopkins deputy Sur. S. C.