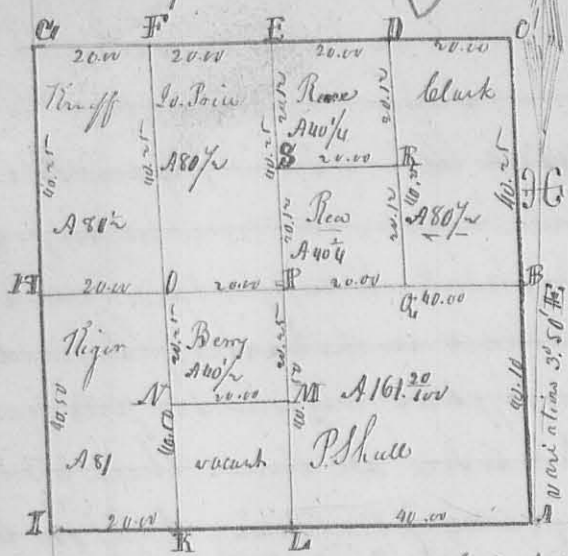


850  
N<sup>o</sup> 341  
8387

S 21 T 5 R 8 E.



The annexed plat represents the survey and sub-division of S 21 T 5 R 8 E, made Sept. 9<sup>th</sup> 1836 for the persons whose names are marked thereon. The beginning is at the S.E. corner, at 22. courses N 35° 50' W, and at right angle. Contents of each lot in the section, as marked on the plat.

Description of corners -

Section corner B. Bur Oak 15 S. D. S 40 W 24<sup>th</sup> links, and Bur Oak 12 S. D. N 44 E 25 links. C. Section corner. D. Ash 12 S. D. corner tree. E. Elm 6 S. D. N 14 E 7 links, do 514 W 33 links. F. Beech 20 S. D. S 85 E 25<sup>th</sup> 4 Beech 20 S. D. S 85 W 38 links. G. N.W. corner of the section. H. Beech 22 S. D. S 69 E 22 links, White Oak 12 S. D. N 4 W 4 links. I. S.W. corner of the section. K. White Oak 5 S. D. N 60 W 21 links. Lynn 15 S. D. N 55 E 20 links. L. Elm 36 S. D. N 35 E 20, marked Bur. Oak 24 S. D. S 73 W 30 links, M. Bur. Oak 18 S. D. N 20 E 34 links, Lynn 58 W 25 links, N. Beech 22 S. D. N 56 E 4<sup>th</sup> links, do. 4 S 33 W 10 links. O. Ash 15 S. D. N 59 W 8 links, Lynn 15 S. D. S 39 E 10<sup>th</sup> links, P. Ash 12 S. D. N 85 E 38 S. Cedar 5 S. D. S 6 E 40 links. Q. Dogwood 3 S. D. S 33 W 3 links, dogwood N 41 W 22 R. Ash 8 S. D. N 40 E 14 links, Br. wood 4 S. D. S 89 W 14 S. Ash 8 S. D. S 86 E 18<sup>th</sup> links. do. 12 S. D. S 68 W 22 links.

Joseph Poire 3  
Gadock Stephens } do. ex. Dan. McKim Co. Sur. J. C. Ohio

N<sup>o</sup> 362  
8169

Surveyed Sept. 16. 1836 for Daniel Hunt part of Survey N<sup>o</sup> 3437 as follows Beginning at a stem near a Lynn and Elm, S. E. corner to J. P. Parkinson, thence S 10 E 81 poles to a stake in a County road, thence with said road S 79 W 99 poles to a stake, S 15 E 20 links from a large stem, thence N 18 W 83 poles with the East line of John Longwell's land to a stake about one pole from a small bush in the Southwesterly line of J. S. Parkinson's land, thence with said line N 80 E 106 poles to the beginning, Containing 57<sup>1</sup>/<sub>4</sub> acres  
D. McKim Co. Sur. J. C. O.