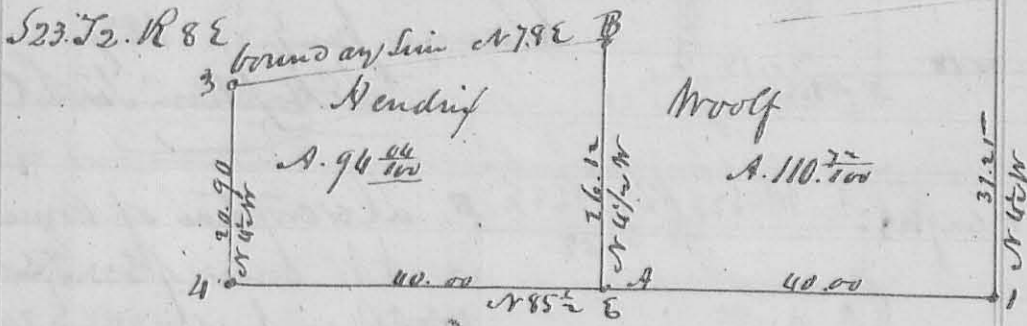


F. R. Oak 15. 1<sup>st</sup> DP N10E 15 Links Hickory 6. 1<sup>st</sup> DP S19E 5 Links  
 G. Beech 15. 569E 11 Links Jr. Wood N30W 10 Links.  
 I. Ash 12. 1<sup>st</sup> DP S48W 23 Links. Ash 6. 1<sup>st</sup> DP N48E 35 Links  
 H. R. Oak. 6. 1<sup>st</sup> DP N89W 41. Sugar 22. 1<sup>st</sup> DP N80E 47.5  
 K. Beech 9. 1<sup>st</sup> DP. N55E 33 Links. Jr. Wood 3. 1<sup>st</sup> DP S16W 14 Links.  
 L. Corner of Section. -

Dan Hopkins Co. Sur. G. S. C.

N. 360.

8488



Description of Corner. at A. Beech 15. 1<sup>st</sup> DP N12W 23 Links. Elm 22. 1<sup>st</sup> DP S5E 40 Links  
 " B Sugar 6. 1<sup>st</sup> DP S53W 6 S. Hickory 2. 1<sup>st</sup> DP N52E 4 Links.

at 1. 2. 3. 4. Origin at Section Corner -

The foregoing survey of S23. T2. R88 was made for Hendrix & Woolf  
 Jan'y 25. & 26. 1837.

Dan Hopkins Co. Sur. G. S. C.

Also at Larns Corner.

N. 361

8481

Survey is for Larns Corner. the SW quarter of Section 28. T2. S  
 R88. & divides the Larns as follows. Beginning at the South  
 East Corner of the Larns at an Elm Ash 12. 1<sup>st</sup> DP S53W 10.  
 Links. thence N30.57W 33 ch. cuping a Crk to J. Driebach's  
 S. E. Corner. thence with his south line S86. 10 W 39 ch. 80 Links  
 cuping a Crk at 6. 7. & 10 ch. to the origin'd quarter Corner  
 between S28 & 29. at Beech 56. 1<sup>st</sup> DP S61W 40 L. Ditch & 5. 1<sup>st</sup> DP N57E 24 Links. thence  
 S3. 50 E 38 ch. 20 Links to the SW Corner of the said section in the old  
 brown clay line. thence with said line N78E to the beginning  
 - The division line begins on the N. line of the quarter 19 ch 90  
 Links from either Corner at an Elm 8. 1<sup>st</sup> DP S75W 23 S. Beech 14.  
 1<sup>st</sup> DP. N68E 45 Links. thence S30. 50 E 35 ch. 62 Links to Sugar 2. 1<sup>st</sup> DP  
 N35. 1/2 E 11 Links. Beech 15. 1<sup>st</sup> DP S108E 21 Links. in the boundary line -

D. Hopkins S. G.