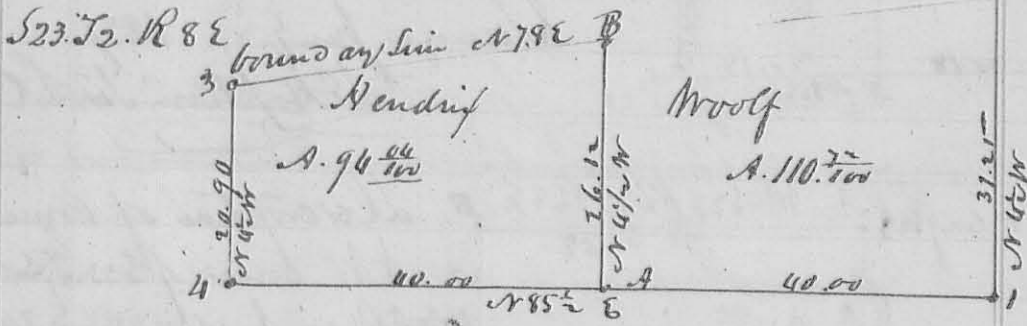


F. R. Oak 15. 1st DP N10E 15 Links Hickory 6. 1st DP S19E 5 Links
 G. Beech 15. 569E 11 Links Jr. Wood N30W 10 Links.
 I. Ash 12. 1st DP. S48W 23 Links. Ash 6. 1st DP N48E 35 Links
 H. R. Oak. 6. 1st DP N49W 41. Sugar 22. 1st DP N80E 47.5
 K. Beech 9. 1st DP. N55E 33 Links. Jr. Wood 3. 1st DP S16W 14 Links.
 L. Corner of Section. -

Dan Hopkins Co. Sur. G. B.

N. 360.

8488



Description of Corner. at A. Beech 15. 1st DP N12W 23 Links. Elm 22. 1st DP S5E 40 Links
 " B Sugar 6. 1st DP S53W 6 Links. Hickory 2. 1st DP N52E 4 Links.

at 1. 2. 3. 4. Origin at Section Corner -

The foregoing survey of S23. T2. R88E was made for Hendrix & Woolf
 Jan'y 25. & 26. 1837.

Dan Hopkins Co. Sur. G. B.

Also at Larnestown.

N. 361

8481

Survey is for Larnestown. the SW quarter of Section 28. T2. S
 R88E. & divides the Larnestown as follows. Beginning at the South
 East Corner of the Larnestown at an Elm Ash 12. 1st DP S53W 10.
 Links. thence N30.57W 33 ch. crossing a Creek to J. Driebach's
 S.E. Corner. thence with his south line S86.70W 39 ch. 80 Links
 crossing a Creek at 6. 7. & 10 ch. to the original quarter corner
 between S28P29. a Beech 56. 1st DP S61W 40. Links. then S57E 29 Links. thence
 S3.50E 38 ch. 20 Links to the SW Corner of the said section in the old
 brown clay line. thence with said line N78E to the beginning
 - The division line begins on the N. line of the quarter 19 ch 90
 Links from either corner at an Elm 8. 1st DP S75W 23.5. Beech 11.
 1st DP. N68E 45 Links. thence S30.50E 35 ch. 62 Links to Sugar 2. 1st DP
 N35.7E 11 Links. Beech 15. 1st DP S108E 21 Links. in the boundary line -

D. Hopkins S. G.