

REC'D 7-31-01 SML/ak
Lee Surveying and Mapping Co., Inc.

Land Surveys • Topography • Subdivisions • Construction Layout

117 N. Madriver St.
Bellefontaine OH 43311



Phone: (937) 593-7335
Fax: (937) 593-7444

**CLAYTON
5.000 ACRES**

Lying in Section 28, Town 2, Range 8, Bloomfield Township, Logan County, Ohio.

Being out of the George W. Clayton and Althea J. Clayton 49.78 acre tract as deeded and described in Official Record 401, Page 705, Tract II of the Logan County Records of Deeds and being more particularly described as follows:

Beginning at a stone with monument cover found at the southwest corner of Section 28 and the intersection of the centerlines of County Highway 58 and Township Road 23.

THENCE, with the west line of Section 28 and the centerline of Township Road 23 (40 feet wide), N 0°-00'-00" E, a distance of 991.00 feet to a MAG nail set at THE TRUE POINT OF BEGINNING.

THENCE, with the west line of Section 28 and the centerline of Township Road 23, N 0°-00'-00" E, a distance of 250.00 feet to a MAG nail set.

THENCE, N 89°47'-14" E, a distance of 871.21 feet to a 5/8 inch iron rod set, passing a 5/8 inch iron rod set at 20.00 feet.

THENCE, S 0°-00'-00" W, a distance of 250.00 feet to a 5/8 inch iron rod set.

THENCE, with the north line of the Dennis H. Cordonnier original 50 acre tract (O.R. 193, Pg. 74), S 89°-47'-14" W, a distance of 871.21 feet to the point of beginning, passing a 5/8 inch iron rod set at 851.21 feet.

Containing 5.000 acres of which 0.115 acre is within the highway right-of-way.

The basis for bearings is the west line of Section 28 being N 0°-00'-00" E, and all other bearings are from angles and distances measured in a field survey by Lee Surveying and Mapping Co., Inc. on July 25, 2001.



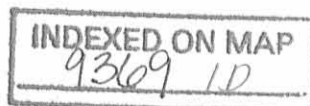
ORIGINAL STAMP IN GREEN

Description prepared by:

A handwritten signature in black ink, appearing to read 'J. Lee'.

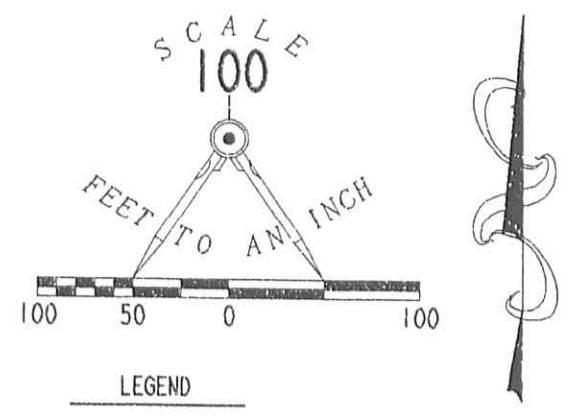
Jeffrey I. Lee
Professional Surveyor 6359
July 26, 2001

L-3191



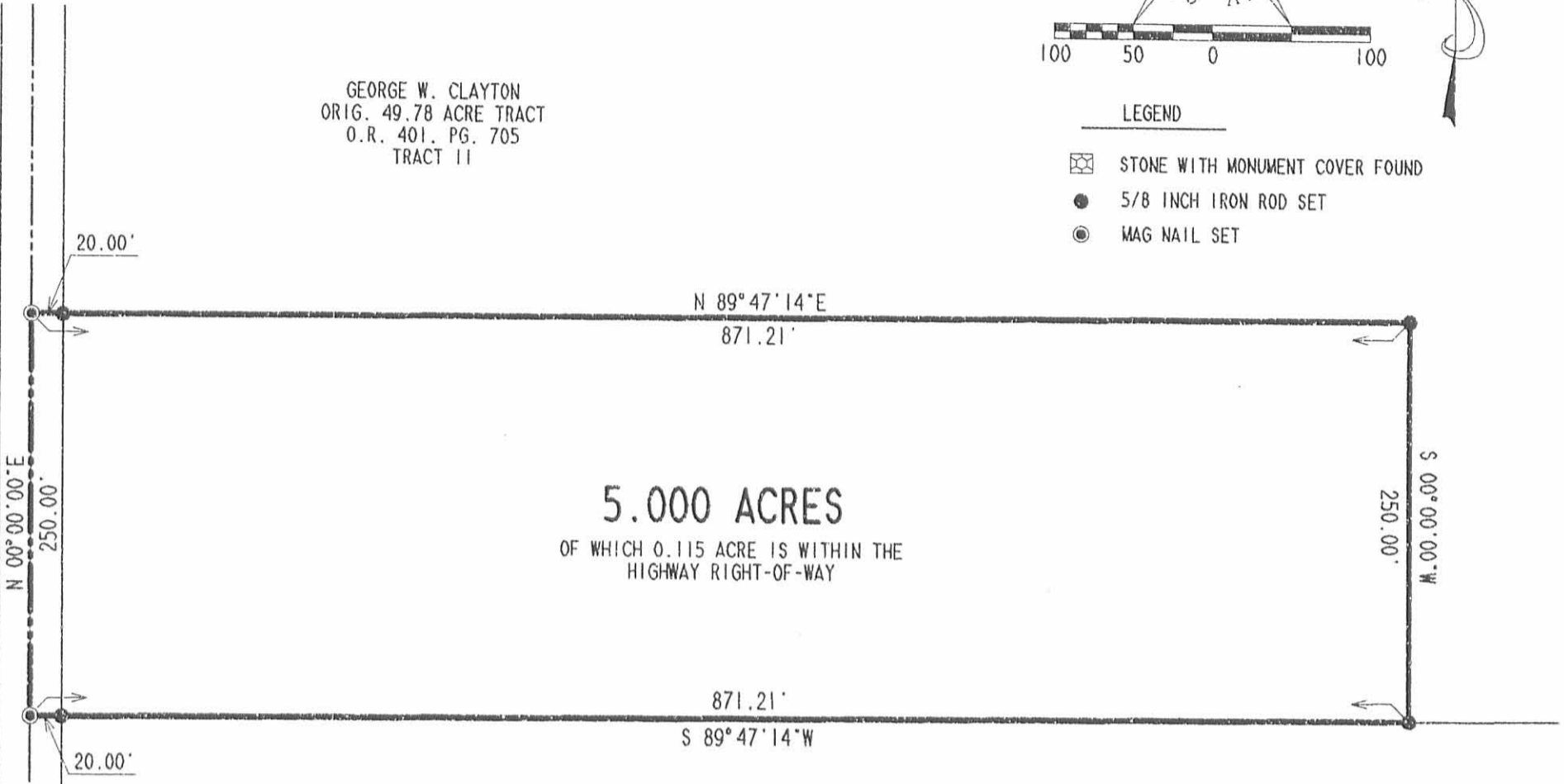
REVISED 7-31-01 SML/ck

2 WORKING DAYS
BEFORE YOU DIG
CALL TOLL FREE **800-362-2764**
OHIO UTILITIES PROTECTION SERVICE.



GEORGE W. CLAYTON
ORIG. 49.78 ACRE TRACT
O.R. 401, PG. 705
TRACT 11

- LEGEND
- STONE WITH MONUMENT COVER FOUND
 - 5/8 INCH IRON ROD SET
 - MAG NAIL SET



5.000 ACRES
OF WHICH 0.115 ACRE IS WITHIN THE
HIGHWAY RIGHT-OF-WAY

DENNIS H. CORDONNIER
ORIG 50 ACRE TRACT
O.R. 193, PG. 74

TOWNSHIP ROAD 23 (40' R/W)

**SURVEY OF 5.000 ACRES
OUT OF THE GEORGE W. CLAYTON
AND ALTHEA J. CLAYTON
ORIGINAL 49.78 ACRE TRACT
OFFICIAL RECORD 401, PAGE 705, TRACT 11
SECTION 28, TOWN 2, RANGE 8
BLOOMFIELD TOWNSHIP
LOGAN COUNTY, OHIO**



SURVEYED BY:

JEFFREY I. LEE
PROFESSIONAL SURVEYOR 6359
JULY 25, 2001

SOUTHWEST CORNER
OF SECTION 28



COUNTY HIGHWAY 58

COPYRIGHT 2001 BY:
LEE SURVEYING & MAPPING CO., INC.
117 North Madriver Street
BELLEFONTAINE, OHIO 43311
(937) 593-7335

INDEXED ON MAP
9369 1P

D-400 L3191 L-3191-3