

REC'D 7-31-07 S.W.J. OK

# Lee Surveying and Mapping Co., Inc.

Land Surveys • Topography • Subdivisions • Construction Layout

117 N. Madriver St.  
Bellefontaine OH 43311



Phone: (937) 593-7335  
Fax: (937) 593-7444

## WILLIAMS 4.174 ACRES

Lying in Section 15, Town 7, Range 8, Bloomfield Township, Logan County, Ohio.

Being all of the Charles L. Williams 4.23 acre tract as described in Official Record 166, Page 638, Tract II of the Logan County Records of Deeds and being more particularly described as follows:

Commencing on a 24 inch concrete post found at the southwest corner of Section 15.

THENCE, with the south line of Section 15, S 89°-43'-33"E, a distance of 2681.61 feet to a 5/8 inch iron rod set on the southwest corner of the southeast quarter of Section 15 at the TRUE POINT OF BEGINNING.

THENCE, with the west line of the southeast quarter of Section 15 and the east line of the Charles L. Williams 80 acre tract (O.R. 166, Pg. 638, Tract I), N 0°-00'-17"E, a distance of 528.32 feet to a railroad spike found on the center-line of County Highway 54, passing a 5/8 inch iron rod set at 490.42 feet.

THENCE, with the center-line of County Highway 54 (60 feet wide), S 52°-19'-34"E, a distance of 869.51 feet to a railroad spike set on the south line of Section 15.

THENCE, with the south line of Section 15 and the north line of the Phyllis B. Yeasel, Trustee of the Phyllis B. Yeasel Trust, Dated February 17, 1994, 275.83 acre tract (O.R. 433, Pg. 045, Tract II), N 89°-44'-33"W, a distance of 688.27 feet to the point of beginning, passing a 5/8 inch iron rod set at 49.37 feet.

Containing 4.174 acres, of which 0.577 acre is within the highway right-of-way.

The basis for bearings is the south line of Section 15, being S 89°-44'-33"E, and all other bearings are from angles and distances measured in a field survey by Lee Surveying and Mapping Co., Inc. on July 26, 2007.



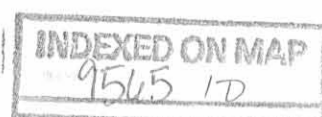
ORIGINAL STAMP IN GREEN

Description prepared by:

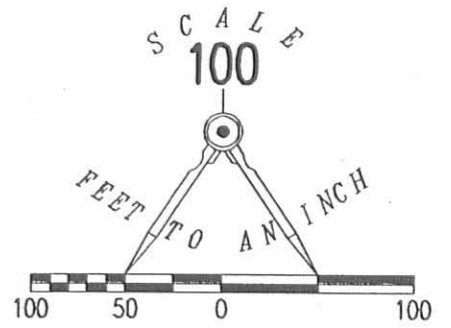
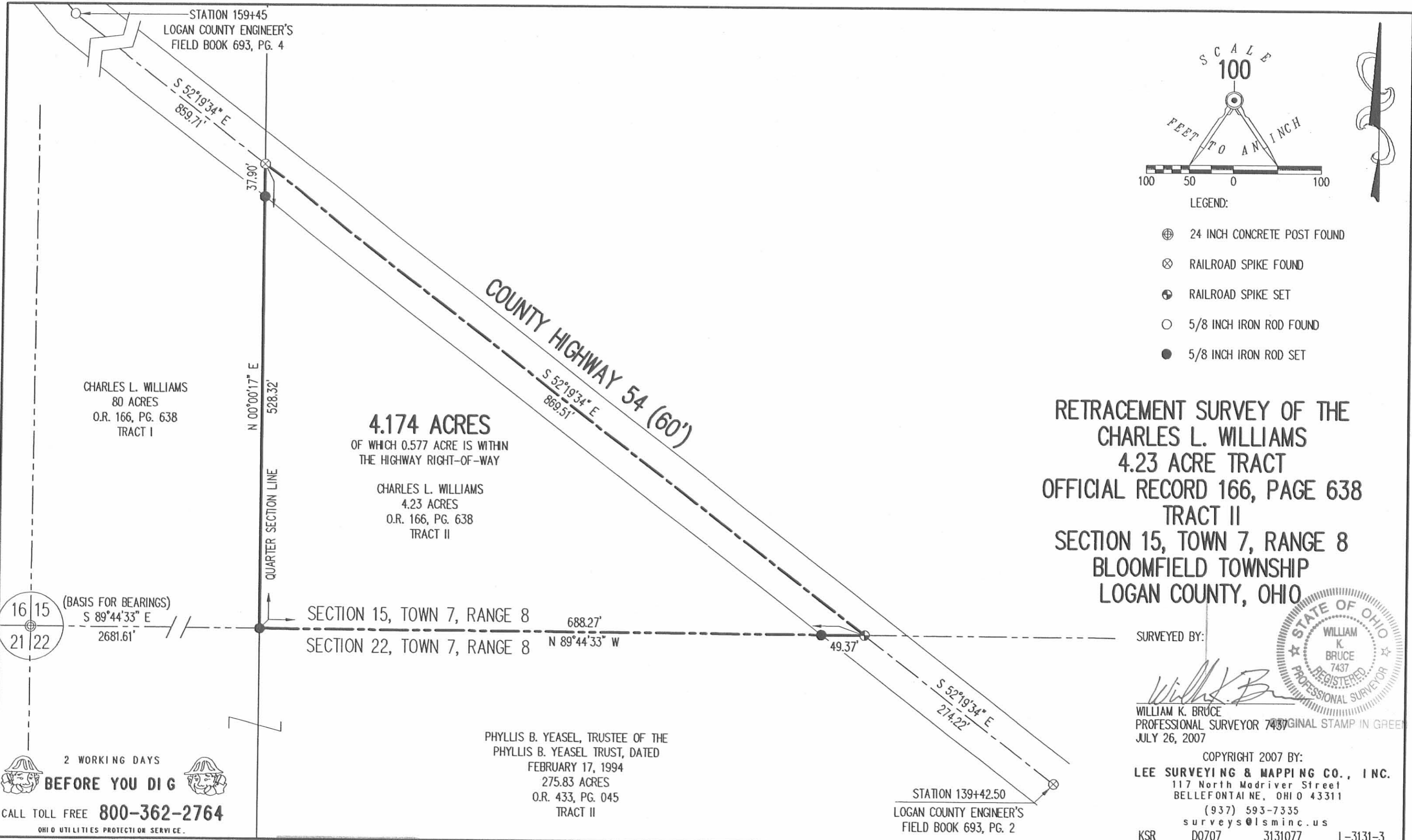
A handwritten signature in black ink that reads 'William K. Bruce'.

William K. Bruce  
Professional Surveyor 7437  
July 27, 2007

3131077



REC'D 7-31-07 SMM OK

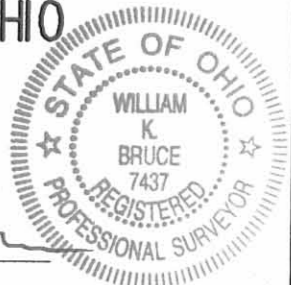


- LEGEND:
- ⊕ 24 INCH CONCRETE POST FOUND
  - ⊗ RAILROAD SPIKE FOUND
  - ⊕ RAILROAD SPIKE SET
  - 5/8 INCH IRON ROD FOUND
  - 5/8 INCH IRON ROD SET

RETRACEMENT SURVEY OF THE  
 CHARLES L. WILLIAMS  
 4.23 ACRE TRACT  
 OFFICIAL RECORD 166, PAGE 638  
 TRACT II  
 SECTION 15, TOWN 7, RANGE 8  
 BLOOMFIELD TOWNSHIP  
 LOGAN COUNTY, OHIO

SURVEYED BY:

*William K. Bruce*  
 WILLIAM K. BRUCE  
 PROFESSIONAL SURVEYOR 7437



ORIGINAL STAMP IN GREEN  
 JULY 26, 2007

COPYRIGHT 2007 BY:  
 LEE SURVEYING & MAPPING CO., INC.  
 117 North Madriver Street  
 BELLEFONTAINE, OHIO 43311  
 (937) 593-7335  
 surveys@lsminc.us  
 KSR D0707 3131077 L-3131-3

INDEXED ON MAP  
 9545 1P

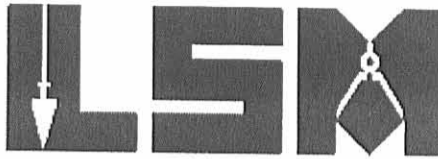
2 WORKING DAYS  
 BEFORE YOU DIG  
 CALL TOLL FREE 800-362-2764  
 OHIO UTILITIES PROTECTION SERVICE.

REC'D 10-4-07 SWM & K

# Lee Surveying and Mapping Co., Inc.

Land Surveys • Topography • Subdivisions • Construction Layout

117 N. Madriver St.  
Bellefontaine OH 43311



Phone: (937) 593-7335  
Fax: (937) 593-7444

## WILLIAMS 3.476 ACRES

Lying in Section 15, Town 7, Range 8, Bloomfield Township, Logan County, Ohio.

Being out of the Charles L. Williams 4.23 acre tract as described in Official Record 166, Page 638, Tract II of the Logan County Records of Deeds and being more particularly described as follows:

Commencing on a 24 inch concrete post found at the southwest corner of Section 15.

THENCE, with the south line of Section 15, S 89°-43'-33"E, a distance of 2681.61 feet to a 5/8 inch iron rod set on the southwest corner of the southeast quarter of Section 15 at the TRUE POINT OF BEGINNING.

THENCE, N 14°-40'-56"E, a distance of 454.28 feet to a railroad spike set on the center-line of County Highway 54, passing a 5/8 inch iron rod set at 421.69 feet.

THENCE, with the center-line of County Highway 54 (60 feet wide), S 52°-19'-34"E, a distance of 724.09 feet to a railroad spike set on the south line of Section 15.

THENCE, with the south line of Section 15 and the north line of the Phyllis B. Yeasel, Trustee of the Phyllis B. Yeasel Trust, Dated February 17, 1994, 275.83 acre tract (O.R. 433, Pg. 045, Tract II), N 89°-44'-33"W, a distance of 688.27 feet to the point of beginning, passing a 5/8 inch iron rod set at 49.37 feet.

Containing 3.476 acres, of which 0.481 acre is within the highway right-of-way.

The basis for bearings is the south line of Section 15, being S 89°-44'-33"E, and all other bearings are from angles and distances measured in a field survey by Lee Surveying and Mapping Co., Inc. on July 26, 2007 and October 1, 2007.

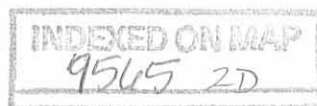


ORIGINAL STAMP IN GREEN

Description prepared by:

William K. Bruce  
Professional Surveyor 7437  
July 27, 2007  
Revised October 2, 2007

3131097



REC'D 10-4-07 SMY OK

STATION 159+45  
LOGAN COUNTY ENGINEER'S  
FIELD BOOK 693, PG. 4

S 52°19'34" E  
1005.13'

CHARLES L. WILLIAMS  
80 ACRES  
O.R. 166, PG. 638  
TRACT I

EXISTING  
SWALE  
LOCATION

QUARTER SECTION LINE

N 14°40'56" E  
454.28'

3.476 ACRES

OF WHICH 0.481 ACRE IS WITHIN  
THE HIGHWAY RIGHT-OF-WAY

CHARLES L. WILLIAMS  
4.23 ACRES  
O.R. 166, PG. 638  
TRACT II

COUNTY HIGHWAY 54 (60')

S 52°19'34" E  
724.09'

SECTION 15, TOWN 7, RANGE 8

SECTION 22, TOWN 7, RANGE 8

688.27'

N 89°44'33" W

49.37'

S 52°19'34" E  
274.22'

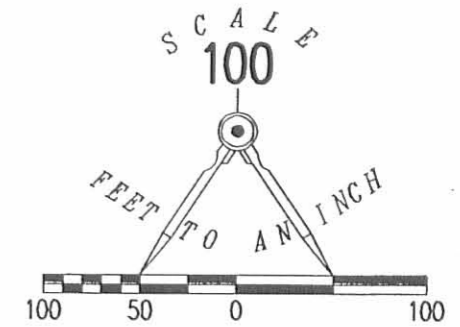


ORIGINAL STAMP IN GREEN

STATION 139+42.50  
LOGAN COUNTY ENGINEER'S  
FIELD BOOK 693, PG. 2

PHYLLIS B. YEASEL, TRUSTEE OF THE  
PHYLLIS B. YEASEL TRUST, DATED  
FEBRUARY 17, 1994  
275.83 ACRES  
O.R. 433, PG. 045  
TRACT II

INDEXED ON MAP  
9565 2P



LEGEND:

- ⊕ 24 INCH CONCRETE POST FOUND
- ⊗ RAILROAD SPIKE FOUND
- ⊙ RAILROAD SPIKE SET
- 5/8 INCH IRON ROD FOUND
- 5/8 INCH IRON ROD SET

SURVEY OF THE 3.476 ACRES OUT OF THE  
CHARLES L. WILLIAMS  
4.23 ACRE TRACT  
OFFICIAL RECORD 166, PAGE 638  
TRACT II  
SECTION 15, TOWN 7, RANGE 8  
BLOOMFIELD TOWNSHIP  
LOGAN COUNTY, OHIO

SURVEYED BY:

*William K. Bruce*  
WILLIAM K. BRUCE  
PROFESSIONAL SURVEYOR 7437  
JULY 26, 2007  
REVISED OCTOBER 1, 2007

COPYRIGHT 2007 BY:  
LEE SURVEYING & MAPPING CO., INC.  
117 North Madriver Street  
BELLEFONTAINE, OHIO 43311  
(937) 593-7335  
surveys@lsmcinc.us  
KSS D1007 3131097 L-3131-3

2 WORKING DAYS  
BEFORE YOU DIG  
CALL TOLL FREE 800-362-2764  
OHIO UTILITIES PROTECTION SERVICE.

REC'D 8-19-10 SLM OK

# Lee Surveying and Mapping Co., Inc.

Land Surveys • Topography • Subdivisions • Construction Layout

117 N. Madriver St.  
Bellefontaine OH 43311



Phone: (937) 593-7335  
Fax: (937) 593-7444  
surveys@lsminc.us

## WILLIAMS 47.513 ACRES

Lying in Section 15, Town 7, Range 8, Bloomfield Township, Logan County, Ohio.

Being out of the Charles L. Williams 80 acre tract as deeded and described in Official Record 166, Page 638, Tract I of the Logan County Records of Deeds and being more particularly described as follows:

Beginning on a railroad spike found on the intersection of the east line of the southwest quarter of Section 15 and the center-line of County Highway 54.

THENCE, with the center-line of County Highway 54 (60 feet wide), the following two courses:

N 52°-19'-34"W, a distance of 859.71 feet to a 5/8 inch iron rod found on center-line Station 159+45 (Logan County Engineer's Field Book 693, Page 4).

N 40°-58'-02"W, a distance of 992.31 feet to a 3/4 inch square iron bar found.

THENCE, with the east line of the Phyllis B. Yeasel, Trustee, 237 acre tract (O.R. 433, Pg. 45, Tract IV), N 00°-28'-00"E, a distance of 857.05 feet to a 5/8 inch iron rod set on the north line of the southwest quarter of Section 15, passing a 5/8 inch iron rod set at 45.40 feet.

THENCE, with the north line of the southwest quarter of Section 15 and a south line of the said 237 acre tract, S 89°-57'-35"E, a distance of 1324.27 feet to a 5/8 inch iron rod set on the northeast corner of the southwest quarter of Section 15.

THENCE, with the east line of the southwest quarter of Section 15 and the west line of the Phyllis B. Yeasel, Trustee, 75.77 acre tract (O.R. 433, Pg. 45, Tract V, Third Parcel), S 00°-00'-17"W, a distance of 2130.76 feet to the point of beginning, passing a 5/8 inch iron rod set at 2092.86 feet.

Containing 47.513 acres, of which 1.278 acres are within the highway right-of-way.

Property is subject to any and all previous easements and rights-of-way of record.

The basis for bearings is the east line of the southwest quarter of Section 15, being S 00°-00'-17"W, and all other bearings are from angles and distances measured in a field survey by Lee Surveying and Mapping Co., Inc. on August 16, 2010.

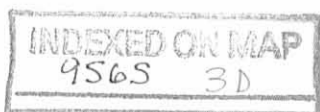
Description prepared by:



*William K. Bruce*

William K. Bruce  
Professional Surveyor 7437  
August 17, 2010

5015810

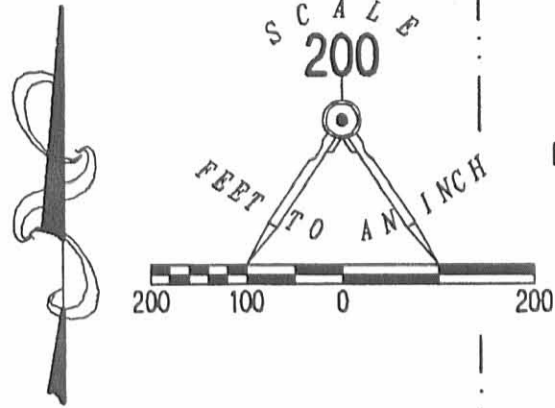


REC'D 8-19-10 smy ou

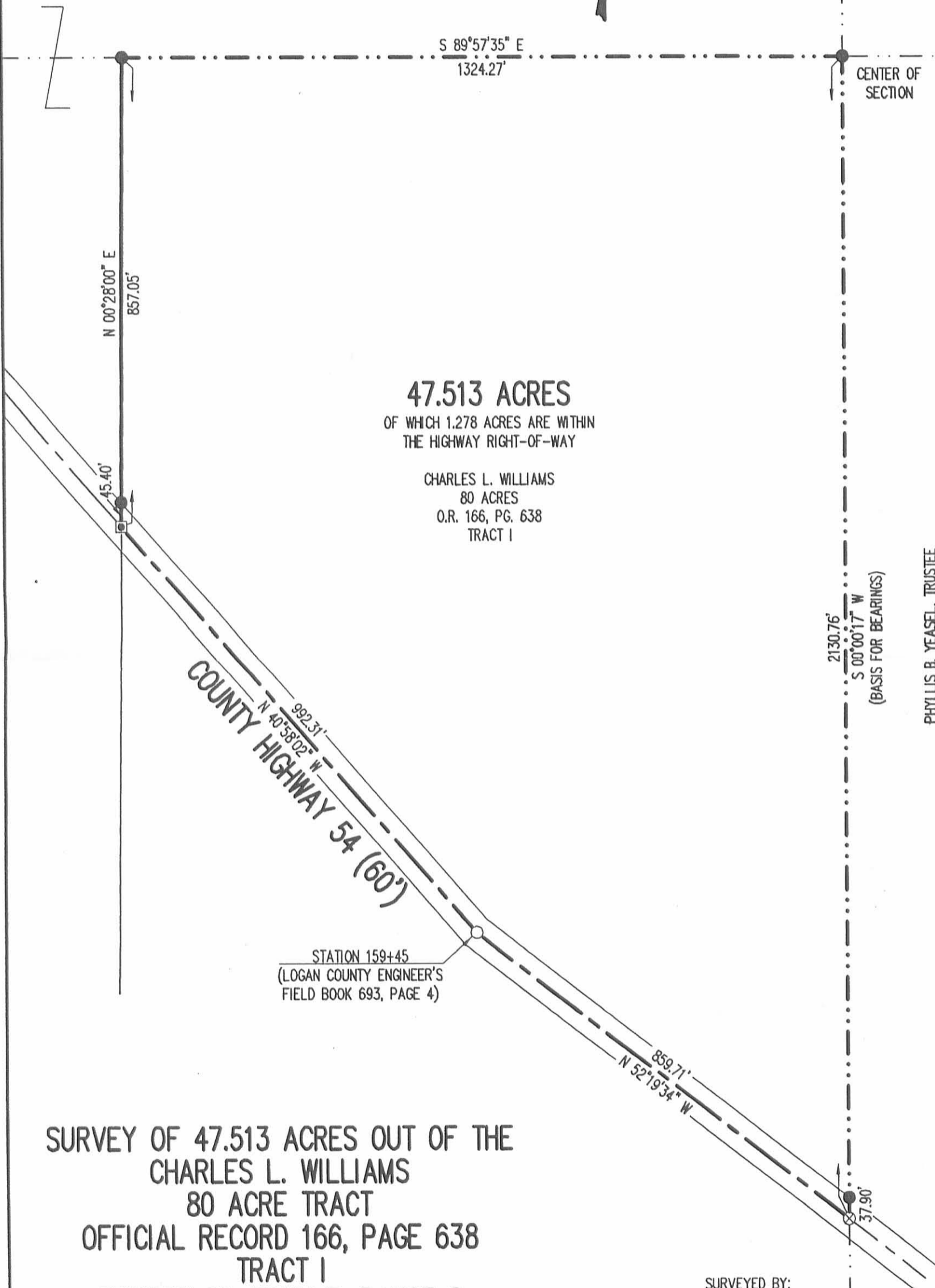
LEGEND:

- ⊗ RAILROAD SPIKE FOUND
- 5/8 INCH IRON ROD FOUND
- 3/4 INCH SQUARE IRON BAR FOUND
- 5/8 INCH IRON ROD SET WITH PLASTIC I.D. CAP STAMPED "LSM 7437"

PHYLLIS B. YEASEL, TRUSTEE  
 237 ACRES  
 O.R. 433, PG. 45  
 TRACT IV



DAVID H. KIPKER, ETAL  
 35 ACRES  
 O.R. 418, PG. 324  
 TRACT I



**47.513 ACRES**  
 OF WHICH 1.278 ACRES ARE WITHIN  
 THE HIGHWAY RIGHT-OF-WAY

CHARLES L. WILLIAMS  
 80 ACRES  
 O.R. 166, PG. 638  
 TRACT I

PHYLLIS B. YEASEL, TRUSTEE  
 75.77 ACRES  
 O.R. 433, PG. 45  
 TRACT V, THIRD PARCEL

STATION 159+45  
 (LOGAN COUNTY ENGINEER'S  
 FIELD BOOK 693, PAGE 4)

**SURVEY OF 47.513 ACRES OUT OF THE  
 CHARLES L. WILLIAMS  
 80 ACRE TRACT  
 OFFICIAL RECORD 166, PAGE 638  
 TRACT I  
 SECTION 15, TOWN 7, RANGE 8  
 BLOOMFIELD TOWNSHIP  
 LOGAN COUNTY, OHIO**

SURVEYED BY:

*William K. Bruce*

WILLIAM K. BRUCE  
 PROFESSIONAL SURVEYOR 7437  
 AUGUST 16, 2010



ORIGINAL STAMP IN GREEN

COPYRIGHT 2010 BY:  
**LEE SURVEYING & MAPPING CO., INC.**  
 117 North Madriver Street  
 BELLEFONTAINE, OHIO 43311  
 (937) 593-7335

KSS D0810 5015810 L-5015-3

2 WORKING DAYS  
**BEFORE YOU DIG**  
 CALL TOLL FREE **800-362-2764**  
 OHIO UTILITIES PROTECTION SERVICE.

INDEXED ON MAP  
 9565 3P

REC'D 7-20-11 SWM OK

# Lee Surveying and Mapping Co., Inc.

Land Surveys • Topography • Subdivisions • Construction Layout

117 N. Madriver St.  
Bellefontaine OH 43311



Phone: (937) 593-7335  
Fax: (937) 593-7444  
surveys@lsminc.us

## WILLIAMS 1.858 ACRES

Lying in the southwest and southeast quarter of Section 15, Town 7 Range 8 East, Bloomfield Township, Logan County, Ohio.

Being out of the Charles L. Williams original 80 acre tract and 4.23 acre tract as deeded and described in Official Record 166, Page 638, Tract I and Tract II of the Logan County Records of Deeds and being more particularly described as follows:

Commencing at a railroad spike found at the intersection of the center-line of County Highway 54 (60 feet wide) and the north line of Section 15.

THENCE, with the center-line of County Highway 54, N 52°-19'-34"W, a distance of 864.91 feet to a MAG nail set at THE TRUE POINT OF BEGINNING.

THENCE, S 38°-21'-00"W, a distance of 60.64 feet to a 5/8 inch iron rod set, passing a 5/8 inch iron rod set at 30.00 feet.

THENCE, S 36°-40'-33"E, a distance of 139.17 feet to a 5/8 inch iron rod set.

THENCE, S 24°-26'-12"W, a distance of 202.72 feet to a 5/8 inch iron rod set.

THENCE, S 62°-46'-11"W, a distance of 109.44 feet to a 5/8 inch iron rod set.

THENCE, N 52°-56'-14"W, a distance of 214.64 feet to a 5/8 inch iron rod set.

THENCE, N 37°-51'-57"E, a distance of 396.91 feet to a MAG nail set, passing a 5/8 inch iron rod set at 366.91 feet.

THENCE, with the center-line of County Highway 54, S 52°-19'-35"E, a distance of 80.00 feet to the point of beginning.

Containing 1.858 acres of which 0.055 acre is within the highway right-of-way.

Property is subject to any and all previous easements and rights-of-way of record.

The basis for bearings is the center-line of County Highway 54, being N 52°-19'-34"W, and all other bearings are from angles and distances measured in a field survey by Lee Surveying and Mapping Co., Inc. on July 14, 2011.

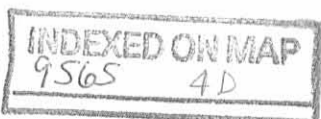
Description prepared by:



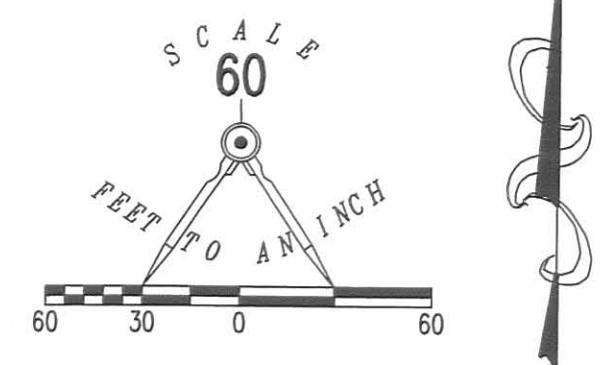
A handwritten signature in cursive script that reads 'William K. Bruce'.

William K. Bruce  
Professional Surveyor 7437  
July 14, 2011

L-3131

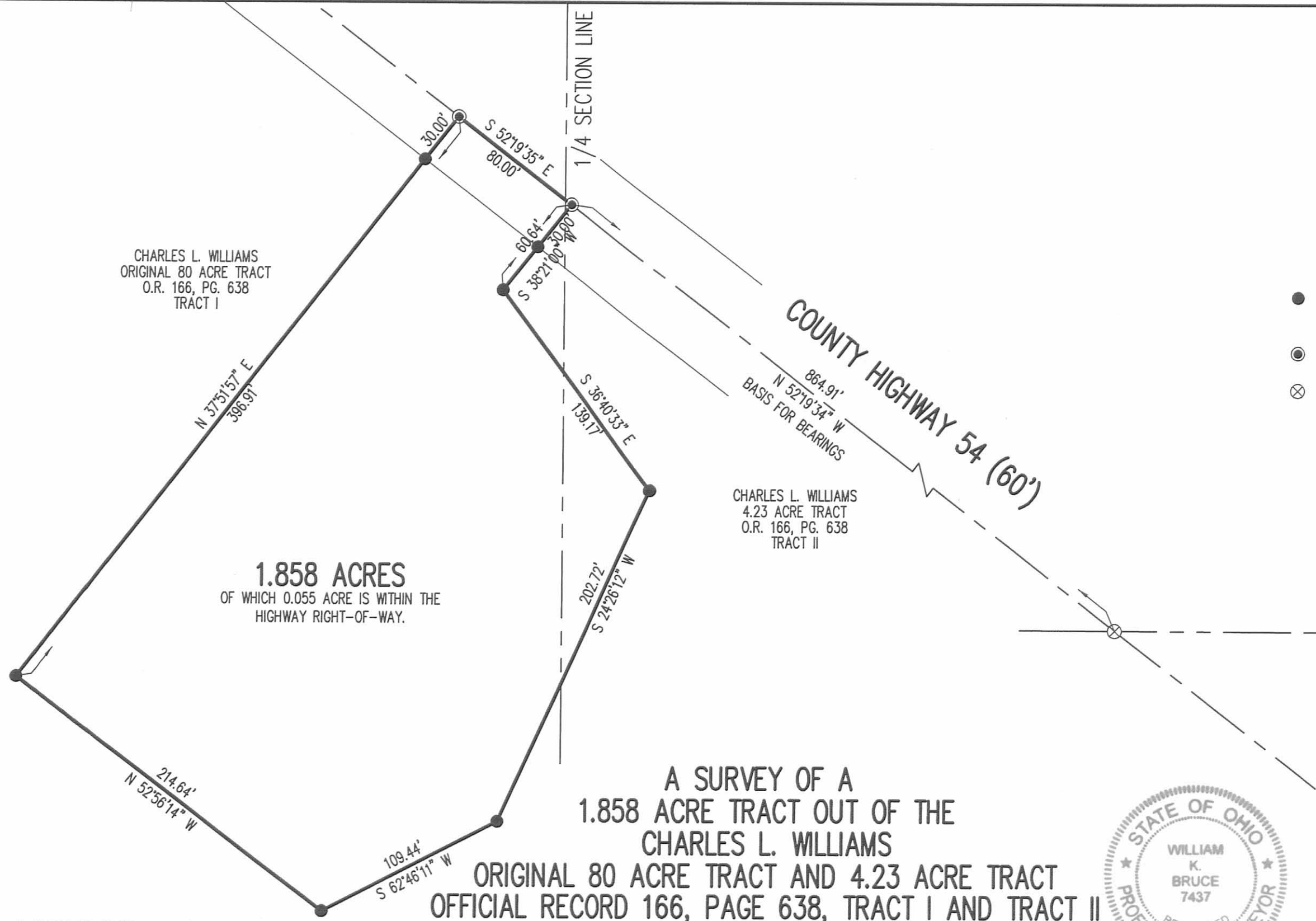


REC'D 7-20-11 SURV ON



LEGEND

- 5/8 INCH IRON ROD SET WITH PLASTIC I.D. CAP STAMPED "LSM 7437"
- ⊙ MAG NAIL SET
- ⊗ RAILROAD SPIKE FOUND



A SURVEY OF A  
 1.858 ACRE TRACT OUT OF THE  
 CHARLES L. WILLIAMS  
 ORIGINAL 80 ACRE TRACT AND 4.23 ACRE TRACT  
 OFFICIAL RECORD 166, PAGE 638, TRACT I AND TRACT II  
 SOUTHWEST AND SOUTHEAST QUARTER SECTION 15, TOWN 7, RANGE 8 EAST  
 BLOOMFIELD TOWNSHIP  
 LOGAN COUNTY, OHIO



SURVEYED BY:

*William K. Bruce*  
 WILLIAM K. BRUCE  
 PROFESSIONAL SURVEYOR 7437  
 JULY 14, 2011

COPYRIGHT 2011 BY:  
 LEE SURVEYING & MAPPING CO., INC.  
 117 North Madriver Street  
 BELLEFONTAINE, OHIO 43311  
 (937) 593-7335  
 surveys@lsminc.us  
 ADW D0611 31310611 L-3131-3

2 WORKING DAYS  
**BEFORE YOU DIG**  
 CALL TOLL FREE **800-362-2764**  
 OHIO UTILITIES PROTECTION SERVICE

INDEXED ON MAP  
 9565 4P



# Lee Surveying and Mapping Co., Inc.

4-18-13



Land Surveys • Topography • Subdivisions • Construction Layout

117 N. Madriver St.  
Bellefontaine OH 43311



Phone: (937) 593-7335  
Fax: (937) 593-7444  
surveys@lsminc.us

## WILLIAMS 2.086 ACRES

Lying in the southwest and southeast quarter of Section 15, Town 7 Range 8 East, Bloomfield Township, Logan County, Ohio.

Being out of the Charles L. Williams original 80 acre tract and 4.23 acre tract as deeded and described in Official Record 166, Page 638, Tract I and Tract II of the Logan County Records of Deeds and being more particularly described as follows:

Commencing at a railroad spike found at the intersection of the center-line of County Highway 54 (60 feet wide) and the north line of Section 15.

THENCE, with the center-line of County Highway 54, N 52°-19'-34"W, a distance of 864.91 feet to a MAG nail found at THE TRUE POINT OF BEGINNING.

THENCE, S 38°-21'-00"W, a distance of 60.64 feet to a 5/8 inch iron rod found, passing a 5/8 inch iron rod found at 30.00 feet.

THENCE, S 36°-40'-33"E, a distance of 139.17 feet to a 5/8 inch iron rod found.

THENCE, S 24°-26'-12"W, a distance of 202.72 feet to a 5/8 inch iron rod found.

THENCE, S 62°-46'-11"W, a distance of 109.44 feet to a 5/8 inch iron rod found.

THENCE, N 52°-56'-14"W, a distance of 239.64 feet to a 5/8 inch iron rod set.

THENCE, N 37°-51'-57"E, a distance of 397.18 feet to a MAG nail set, passing a 5/8 inch iron rod set at 367.18 feet.

THENCE, with the center-line of County Highway 54, S 52°-19'-34"E, a distance of 105.00 feet to the point of beginning.

Containing 2.086 acres of which 0.072 acre is within the highway right-of-way.

Property is subject to any and all previous easements and rights-of-way of record.

The basis for bearings is the center-line of County Highway 54, being N 52°-19'-34"W, and all other bearings are from angles and distances measured in a field survey by Lee Surveying and Mapping Co., Inc. on April 15, 2013.

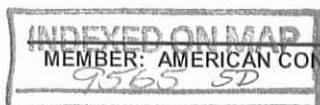
Description prepared by:



ORIGINAL STAMP IN GREEN

William K. Bruce  
Professional Surveyor 7437  
April 16, 2013

L-3131



✓ APPROVED

4-18-13

CHARLES L. WILLIAMS  
ORIGINAL 80 ACRE TRACT  
O.R. 166, PG. 638  
TRACT I

N 37°51'57" E  
397.18'

30.00'

S 52°19'34" E  
105.00'

1/4 SECTION LINE

60.64'  
S 38°21'00" W  
30.00'

COUNTY HIGHWAY 54 (60')

864.91'  
N 52°19'34" W  
BASIS FOR BEARINGS

CHARLES L. WILLIAMS  
4.23 ACRE TRACT  
O.R. 166, PG. 638  
TRACT II

S 36°40'33" E  
139.17'

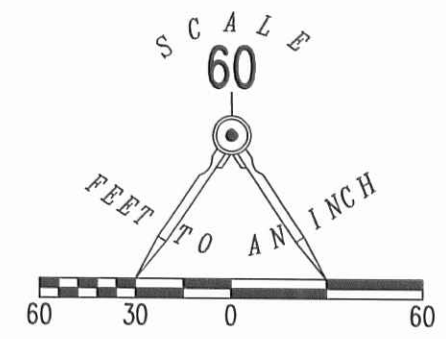
202.72'  
S 24°26'12" W

2.086 ACRES  
OF WHICH 0.072 ACRE IS WITHIN THE  
HIGHWAY RIGHT-OF-WAY.

239.64'  
N 52°56'14" W

109.44'  
S 62°46'11" W

A SURVEY OF A  
2.086 ACRE TRACT OUT OF THE  
CHARLES L. WILLIAMS  
ORIGINAL 80 ACRE TRACT AND 4.23 ACRE TRACT  
OFFICIAL RECORD 166, PAGE 638, TRACT I AND TRACT II  
SOUTHWEST AND SOUTHEAST QUARTER SECTION 15, TOWN 7, RANGE 8 EAST  
BLOOMFIELD TOWNSHIP  
LOGAN COUNTY, OHIO



LEGEND

- 5/8 INCH IRON ROD SET WITH PLASTIC I.D. CAP STAMPED "LSM 7437"
- ⊙ MAG NAIL SET
- 5/8 INCH IRON ROD FOUND
- ⊙ MAG NAIL FOUND
- ⊗ RAILROAD SPIKE FOUND

SECTION 15  
SECTION 22

SURVEYED BY:

*William K. Bruce*  
WILLIAM K. BRUCE  
PROFESSIONAL SURVEYOR 7437  
APRIL 15, 2013



COPYRIGHT 2013 BY:  
LEE SURVEYING & MAPPING CO., INC.  
117 North Madriver Street  
BELLEFONTAINE, OHIO 43311  
(937) 593-7335  
surveys@lsminc.us  
ADW D0413 31310413 L-3131-3

2 WORKING DAYS  
BEFORE YOU DIG  
CALL TOLL FREE 800-362-2764  
OHIO UTILITIES PROTECTION SERVICE

INDEXED ON MAP  
9565 5P

9-17-17  
**Lee Surveying and Mapping Co., Inc.**



Land Surveys • Topography • Subdivisions • Construction Layout

117 N. Madriver St.  
Bellefontaine OH 43311



Phone: (937) 593-7335  
Fax: (937) 593-7444  
surveys@lsminc.us

**WILLIAMS  
2.051 ACRES**

Lying in Section 15, Town 7, Range 8, Bloomfield Township, Logan County, Ohio.

Being out of the Charles L. Williams 80 acre tract and 4.23 acre tract as deeded and described in Official Record 166, Page 638, Tract I and Tract II of the Logan County Records of Deeds and being more particularly described as follows:

Commencing on a railroad road spike found on the intersection of the south line of Section 15 and the center-line of County Highway 54.

THENCE, with the center-line of County Highway 54 (60 feet wide), N 52°-19'-35"W, a distance of 864.76 feet to a MAG nail found at the TRUE POINT OF BEGINNING.

THENCE, S 38°-23'-42"W, a distance of 60.55 feet to a 5/8 inch iron rod found, passing a 5/8 inch iron rod found at 30.00 feet.

THENCE, S 36°-39'-55"E, a distance of 139.23 feet to a 5/8 inch iron rod found.

THENCE, S 24°-26'-50"W, a distance of 202.72 feet to a 5/8 inch iron rod found.

THENCE, S 62°-27'-00"W, a distance of 110.56 feet to a 5/8 inch iron rod found.

THENCE, N 53°-13'-35"W, a distance of 239.68 feet to a 5/8 inch iron rod set.

THENCE, N 39°-17'-57"E, a distance of 399.79 feet to a MAG nail set on the center-line of County Highway 54, passing a 5/8 inch iron rod set at 369.78 feet.

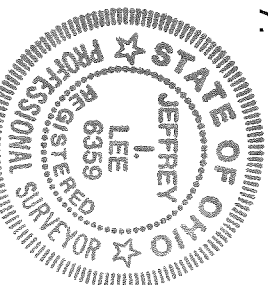
THENCE, with the center-line of County Highway 54, S 52°-19'-35"E, a distance of 94.96 feet to the point of beginning.

Containing 2.051 acres, of which 0.066 acre is within the highway right-of-way. There are 1.943 acres within Tract I and 0.108 acre within Tract II.

Property is subject to any and all previous easements and rights-of-way of record.

The basis for bearings is the center-line of County Highway 54, being N 52°-19'-35"W, and all other bearings are from angles and distances measured in a field survey by Lee Surveying and Mapping Co., Inc. on August 29, 2017.

Description prepared by:



*Jeffrey L. Lee*  
Jeffrey L. Lee  
Professional Surveyor 6359  
August 30, 2017



ORIGINAL STAMP IN GREEN

31310817

# Lee Surveying and Mapping Co., Inc.

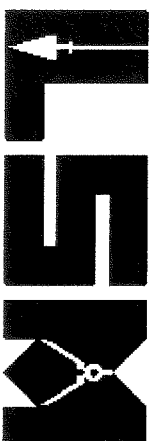
9-9-17



APPROVED

Land Surveys • Topography • Subdivisions • Construction Layout

117 N. Madriver St.  
Bellefontaine OH 43311



Phone: (937) 593-7335  
Fax: (937) 593-7444  
surveys@lsminc.us

## WILLIAMS 2.250 ACRES

Lying in Section 15, Town 7, Range 8, Bloomfield Township, Logan County, Ohio.

Being out of the Charles L. Williams 80 acre tract as deeded and described in Official Record 166, Page 638, Tract I of the Logan County Records of Deeds and being more particularly described as follows:

Commencing on a railroad road spike found on the intersection of the south line of Section 15 and the center-line of County Highway 54.

THENCE, with the center-line of County Highway 54 (60 feet wide), N 52°-19'-35"W, a distance of 959.72 feet to a MAG nail set at the TRUE POINT OF BEGINNING, passing a MAG nail found at 864.76 feet.

THENCE, S 39°-17'-57"W, a distance of 399.79 feet to a 5/8 inch iron rod set, passing a 5/8 inch iron rod set at 30.01 feet.

THENCE, N 52°-19'-35"W, a distance of 245.25 feet to a 5/8 inch iron rod set.

THENCE, N 39°-17'-57"E, a distance of 399.79 feet to a MAG nail set on the center-line of County Highway 54, passing a 5/8 inch iron rod set at 369.78 feet.

THENCE, with the center-line of County Highway 54, S 52°-19'-35"E, a distance of 245.25 feet to the point of beginning.

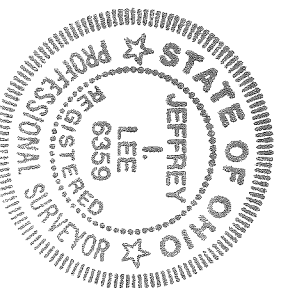
Containing 2.250 acres, of which 0.169 acre is within the highway right-of-way.

Property is subject to a 20.00 feet wide utility easement contiguous to the southeast line and any and all previous easements and rights-of-way of record.

The basis for bearings is the center-line of County Highway 54, being N 52°-19'-35"W, and all other bearings are from angles and distances measured in a field survey by Lee Surveying and Mapping Co., Inc. on August 29, 2017.

Description prepared by:

Jeffrey I. Lee  
Professional Surveyor 6359  
August 30, 2017



ORIGINAL STAMP IN GREEN

31310817

INDEXED ON MAP  
9565 6

# Lee Surveying and Mapping Co., Inc.

Land Surveys • Topography • Subdivisions • Construction Layout

117 N. Madriver St.  
Bellefontaine OH 43311



Phone: (937) 593-7335  
Fax: (937) 593-7444  
surveys@lsminc.us

## WILLIAMS 2.000 ACRES

Lying in Section 15, Town 7, Range 8, Bloomfield Township, Logan County, Ohio.

Being out of the Charles L. Williams 80 acre tract as dedeed and described in Official Record 166, Page 638, Tract I of the Logan County Records of Deeds and being more particularly described as follows:

Commencing on a railroad road spike found on the intersection of the south line of Section 15 and the center-line of County Highway 54.

THENCE, with the center-line of County Highway 54 (60 feet wide), N 52°-19'-35"W, a distance of 1204.97 feet to a MAG nail set at the TRUE POINT OF BEGINNING, passing a MAG nail found at 864.76 feet and a MAG nail set at 959.72 feet.

THENCE, S 39°-17'-57"W, a distance of 399.79 feet to a 5/8 inch iron rod set, passing a 5/8 inch iron rod set at 30.01 feet.

THENCE, N 52°-19'-35"W, a distance of 218.00 feet to a 5/8 inch iron rod set.

THENCE, N 39°-17'-57"E, a distance of 399.79 feet to a MAG nail set on the center-line of County Highway 54, passing a 5/8 inch iron rod set at 369.78 feet.

THENCE, with the center-line of County Highway 54, S 52°-19'-35"E, a distance of 218.00 feet to the point of beginning.

Containing 2.000 acres, of which 0.150 acre is within the highway right-of-way.

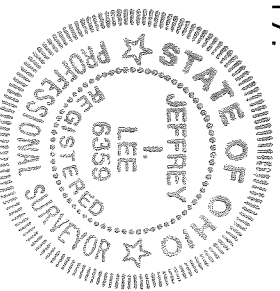
Property is subject to any and all previous easements and rights-of-way of record.

The basis for bearings is the center-line of County Highway 54, being N 52°-19'-35"W, and all other bearings are from angles and distances measured in a field survey by Lee Surveying and Mapping Co., Inc. on August 29, 2017.

Description prepared by:

A handwritten signature in black ink, appearing to read "Jeffrey I. Lee".

Jeffrey I. Lee  
Professional Surveyor 6359  
August 30, 2017



ORIGINAL STAMP IN GREEN

31310817

INDEXED ON MAP

9565 6

9-9-17  
**Lee Surveying and Mapping Co., Inc.**

Land Surveys • Topography • Subdivisions • Construction Layout



**APPROVED**

117 N. Madriver St.  
Bellefontaine OH 43311



Phone: (937) 593-7335  
Fax: (937) 593-7444  
surveys@lsminc.us

**WILLIAMS  
20.00 FEET WIDE UTILITY EASEMENT**

Lying in Section 15, Town 7, Range 8, Bloomfield Township, Logan County, Ohio.

Being a 20.00 feet wide utility easement, for the use of adjoining properties, over part of the Charles L. Williams 80 acre tract as deeded and described in Official Record 166, Page 638, Tract I of the Logan County Records of Deeds and being more particularly described as follows:

Commencing on a railroad road spike found on the intersection of the south line of Section 15 and the center-line of County Highway 54.

THENCE, with the center-line of County Highway 54 (60 feet wide), N 52°-19'-35"W, a distance of 959.72 feet to a MAG nail set at the TRUE POINT OF BEGINNING, passing a MAG nail found at 864.76 feet.

THENCE, S 39°-17'-57"W, a distance of 399.79 feet to a 5/8 inch iron rod set, passing a 5/8 inch iron rod set at 30.01 feet.

THENCE, N 52°-19'-35"W, a distance of 20.01 feet to a point.

THENCE, N 39°-17'-57"E, a distance of 399.79 feet to a point on the center-line of County Highway 54.

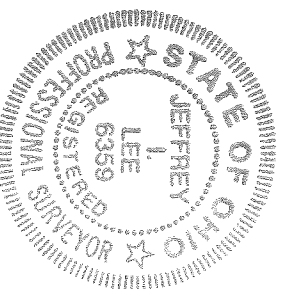
THENCE, with the center-line of County Highway 54, S 52°-19'-35"E, a distance of 20.00 feet to the point of beginning.

Property is subject to any and all previous easements and rights-of-way of record.

The basis for bearings is the center-line of County Highway 54, being N 52°-19'-35"W, and all other bearings are from angles and distances measured in a field survey by Lee Surveying and Mapping Co., Inc. on August 29, 2017.

Description prepared by:

Jeffrey I. Lee  
Professional Surveyor 6359  
August 31, 2017



ORIGINAL STAMP IN GREEN

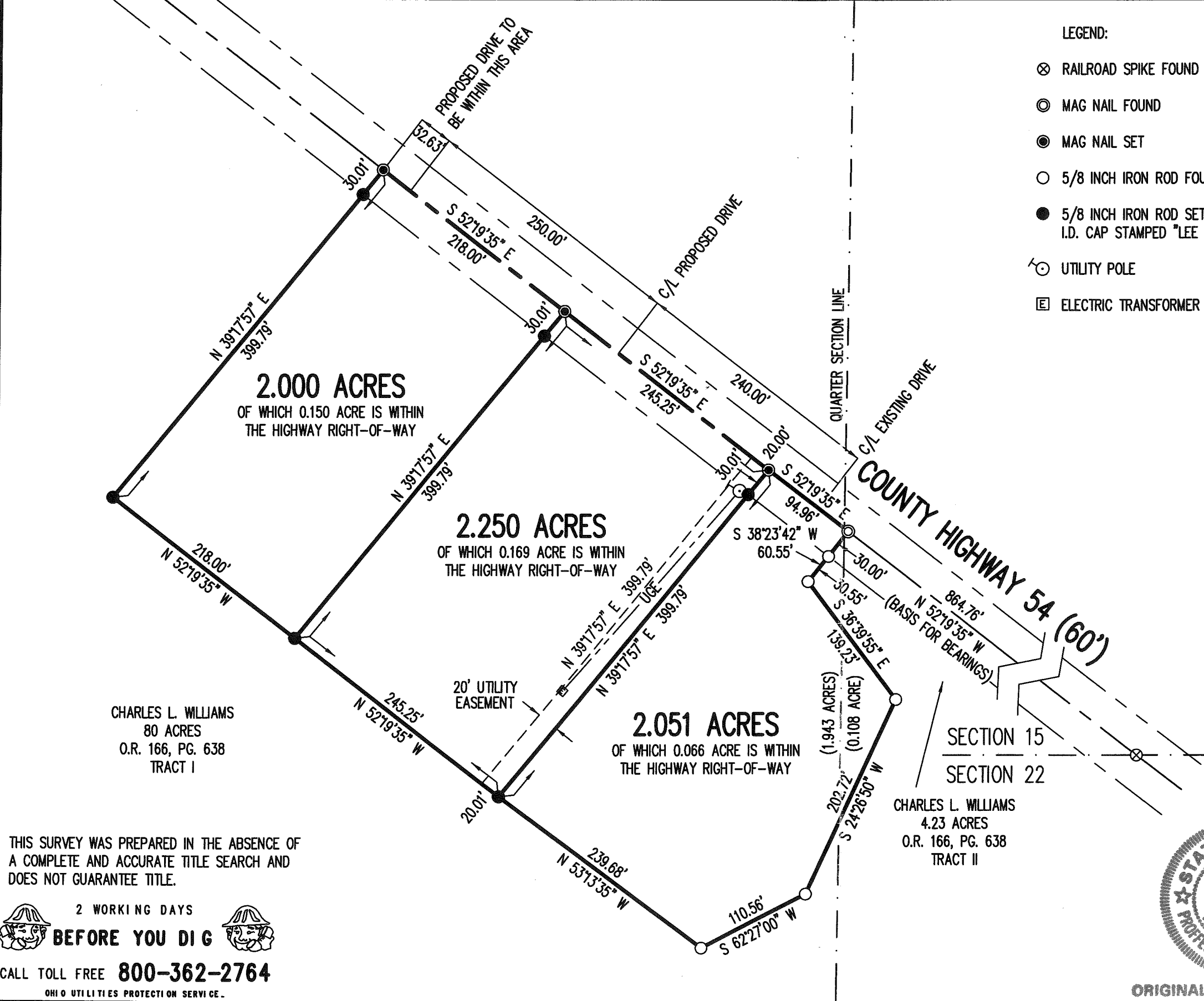
31310817

INDEXED ON MAP

95656

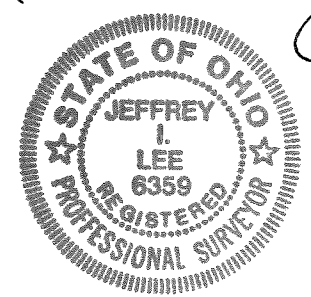
9-7-17

APPROVED



**SURVEY OF THREE TRACTS OUT OF THE CHARLES L. WILLIAMS 80 ACRE TRACT AND 4.23 ACRE TRACT OFFICIAL RECORD 166, PAGE 638 TRACT I AND TRACT II SECTION 15, TOWN 7, RANGE 8 BLOOMFIELD TOWNSHIP LOGAN COUNTY, OHIO**

SURVEYED BY:  
  
**JEFFREY I. LEE**  
 PROFESSIONAL SURVEYOR 6359  
 AUGUST 29, 2017



COPYRIGHT 2017 BY:  
**LEE SURVEYING & MAPPING CO., INC.**  
 117 North Madriver Street  
 BELLEFONTAINE, OHIO 43311  
 (937) 593-7335  
 WWW.LSMINC.US  
 surveys@lsminc.us

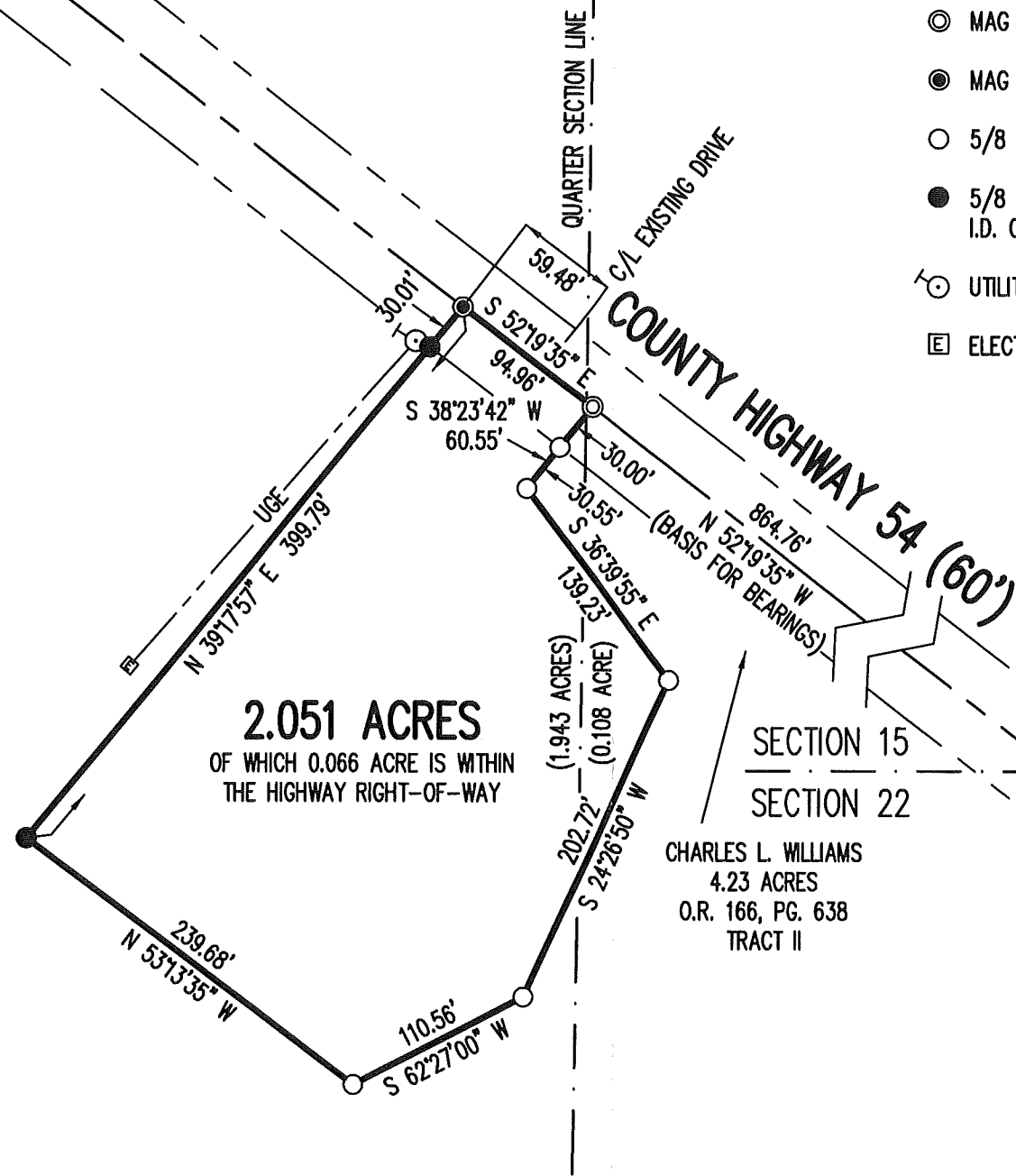
**ORIGINAL STAMP IN GREEN**    KSS    D0817    31310817    L-3131-3

THIS SURVEY WAS PREPARED IN THE ABSENCE OF A COMPLETE AND ACCURATE TITLE SEARCH AND DOES NOT GUARANTEE TITLE.

2 WORKING DAYS  
**BEFORE YOU DIG**  
 CALL TOLL FREE **800-362-2764**  
 OHIO UTILITIES PROTECTION SERVICE.

INDEXED ON MAP  
 9565 16

CHARLES L. WILLIAMS  
80 ACRES  
O.R. 166, PG. 638  
TRACT I

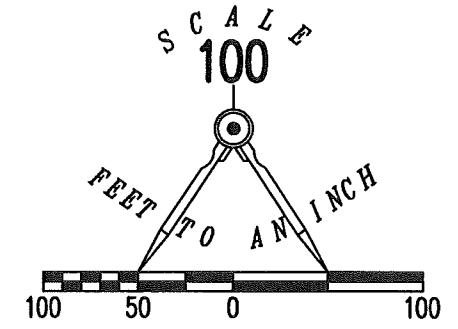


**2.051 ACRES**  
OF WHICH 0.066 ACRE IS WITHIN  
THE HIGHWAY RIGHT-OF-WAY

CHARLES L. WILLIAMS  
4.23 ACRES  
O.R. 166, PG. 638  
TRACT II

LEGEND:

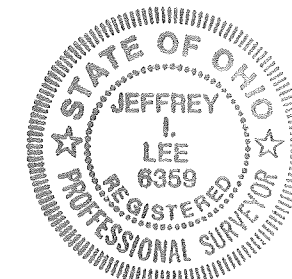
- ⊗ RAILROAD SPIKE FOUND
- ⊙ MAG NAIL FOUND
- MAG NAIL SET
- 5/8 INCH IRON ROD FOUND
- 5/8 INCH IRON ROD SET WITH PLASTIC I.D. CAP STAMPED "LEE SURVEYING INC"
- ⊕ UTILITY POLE
- ⊞ ELECTRIC TRANSFORMER



**SURVEY OF 2.051 ACRES OUT OF THE  
CHARLES L. WILLIAMS  
80 ACRE TRACT AND  
4.23 ACRE TRACT  
OFFICIAL RECORD 166, PAGE 638  
TRACT I AND TRACT II  
SECTION 15, TOWN 7, RANGE 8  
BLOOMFIELD TOWNSHIP  
LOGAN COUNTY, OHIO**

SURVEYED BY:

*Jeffrey I. Lee*  
JEFFREY I. LEE  
PROFESSIONAL SURVEYOR 6359  
AUGUST 29, 2017

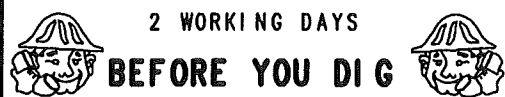


ORIGINAL STAMP IN GREEN

COPYRIGHT 2017 BY:  
**LEE SURVEYING & MAPPING CO., INC.**  
117 North Madriver Street  
BELLEFONTAINE, OHIO 43311  
(937) 593-7335  
WWW.LSMINC.US  
surveys@lsminc.us

KSS D0817 31310817-2.051 L-3131-3

THIS SURVEY WAS PREPARED IN THE ABSENCE OF  
A COMPLETE AND ACCURATE TITLE SEARCH AND  
DOES NOT GUARANTEE TITLE.



2 WORKING DAYS

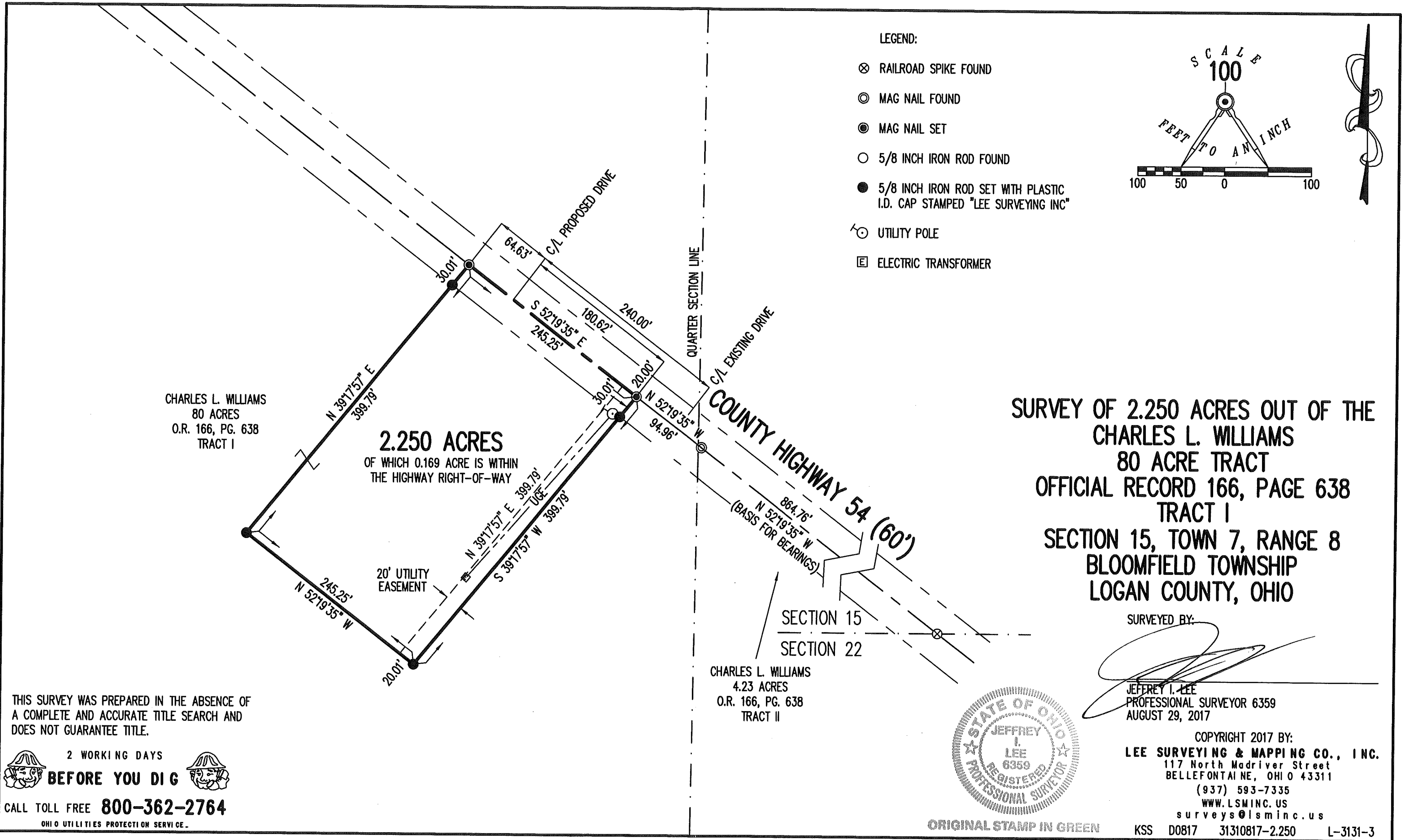
**BEFORE YOU DIG**

CALL TOLL FREE **800-362-2764**

OHIO UTILITIES PROTECTION SERVICE

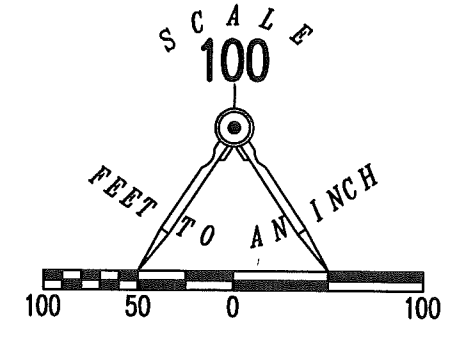
INDEXED ON MAP  
9565





LEGEND:

- ⊗ RAILROAD SPIKE FOUND
- ⊙ MAG NAIL FOUND
- MAG NAIL SET
- 5/8 INCH IRON ROD FOUND
- 5/8 INCH IRON ROD SET WITH PLASTIC I.D. CAP STAMPED "LEE SURVEYING INC"
- ⊕ UTILITY POLE
- ⊞ ELECTRIC TRANSFORMER



CHARLES L. WILLIAMS  
80 ACRES  
O.R. 166, PG. 638  
TRACT I

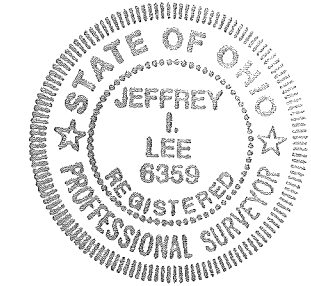
**2.250 ACRES**  
OF WHICH 0.169 ACRE IS WITHIN  
THE HIGHWAY RIGHT-OF-WAY

**SURVEY OF 2.250 ACRES OUT OF THE  
CHARLES L. WILLIAMS  
80 ACRE TRACT  
OFFICIAL RECORD 166, PAGE 638  
TRACT I  
SECTION 15, TOWN 7, RANGE 8  
BLOOMFIELD TOWNSHIP  
LOGAN COUNTY, OHIO**

SURVEYED BY:

*(Signature)*  
JEFFREY I. LEE  
PROFESSIONAL SURVEYOR 6359  
AUGUST 29, 2017

CHARLES L. WILLIAMS  
4.23 ACRES  
O.R. 166, PG. 638  
TRACT II



ORIGINAL STAMP IN GREEN

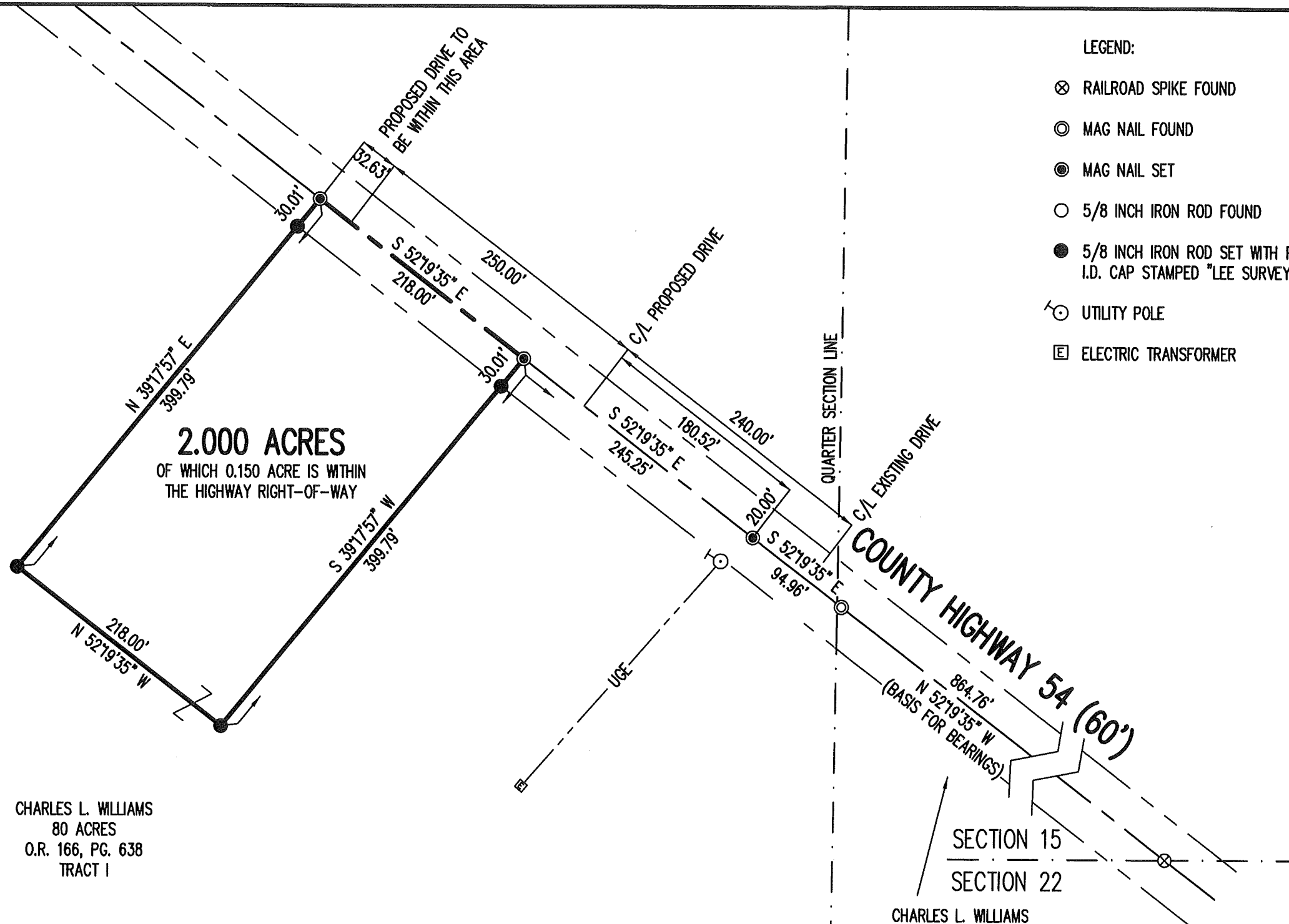
COPYRIGHT 2017 BY:  
**LEE SURVEYING & MAPPING CO., INC.**  
117 North Madriver Street  
BELLEFONTAINE, OHIO 43311  
(937) 593-7335  
WWW.LSMINC.US  
surveys@lsminc.us  
KSS D0817 31310817-2.250 L-3131-3

THIS SURVEY WAS PREPARED IN THE ABSENCE OF  
A COMPLETE AND ACCURATE TITLE SEARCH AND  
DOES NOT GUARANTEE TITLE.



CALL TOLL FREE **800-362-2764**  
OHIO UTILITIES PROTECTION SERVICE.

INDEXED ON MAP  
9565 6



**2.000 ACRES**  
OF WHICH 0.150 ACRE IS WITHIN  
THE HIGHWAY RIGHT-OF-WAY

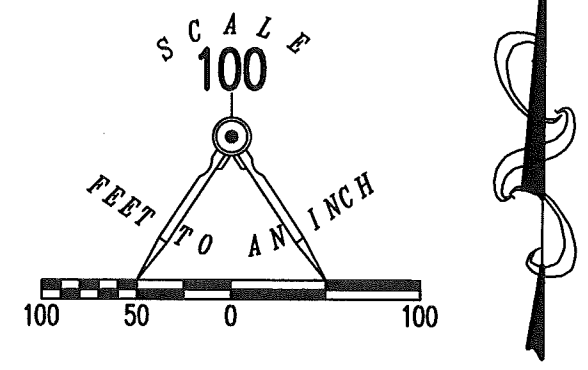
CHARLES L. WILLIAMS  
80 ACRES  
O.R. 166, PG. 638  
TRACT I

THIS SURVEY WAS PREPARED IN THE ABSENCE OF  
A COMPLETE AND ACCURATE TITLE SEARCH AND  
DOES NOT GUARANTEE TITLE.

2 WORKING DAYS  
**BEFORE YOU DIG**

CALL TOLL FREE **800-362-2764**  
OHIO UTILITIES PROTECTION SERVICE.

- LEGEND:
- ⊗ RAILROAD SPIKE FOUND
  - ⊙ MAG NAIL FOUND
  - MAG NAIL SET
  - 5/8 INCH IRON ROD FOUND
  - 5/8 INCH IRON ROD SET WITH PLASTIC I.D. CAP STAMPED "LEE SURVEYING INC"
  - ⊕ UTILITY POLE
  - ⊞ ELECTRIC TRANSFORMER

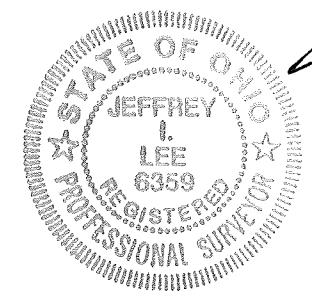


**SURVEY OF 2.000 OUT OF THE  
CHARLES L. WILLIAMS  
80 ACRE TRACT  
OFFICIAL RECORD 166, PAGE 638  
TRACT I  
SECTION 15, TOWN 7, RANGE 8  
BLOOMFIELD TOWNSHIP  
LOGAN COUNTY, OHIO**

SECTION 15  
SECTION 22  
CHARLES L. WILLIAMS  
4.23 ACRES  
O.R. 166, PG. 638  
TRACT II

SURVEYED BY:

*Jeffrey T. Lee*  
JEFFREY T. LEE  
PROFESSIONAL SURVEYOR 6359  
AUGUST 29, 2017



COPYRIGHT 2017 BY:  
**LEE SURVEYING & MAPPING CO., INC.**  
117 North Madriver Street  
BELLEFONTAINE, OHIO 43311  
(937) 593-7335  
WWW.LSMINC.US  
surveys@lsminc.us

ORIGINAL STAMP IN GREEN KSS D0817 31310817-2.000 L-3131-3

INDEXED ON MAP  
9565 6