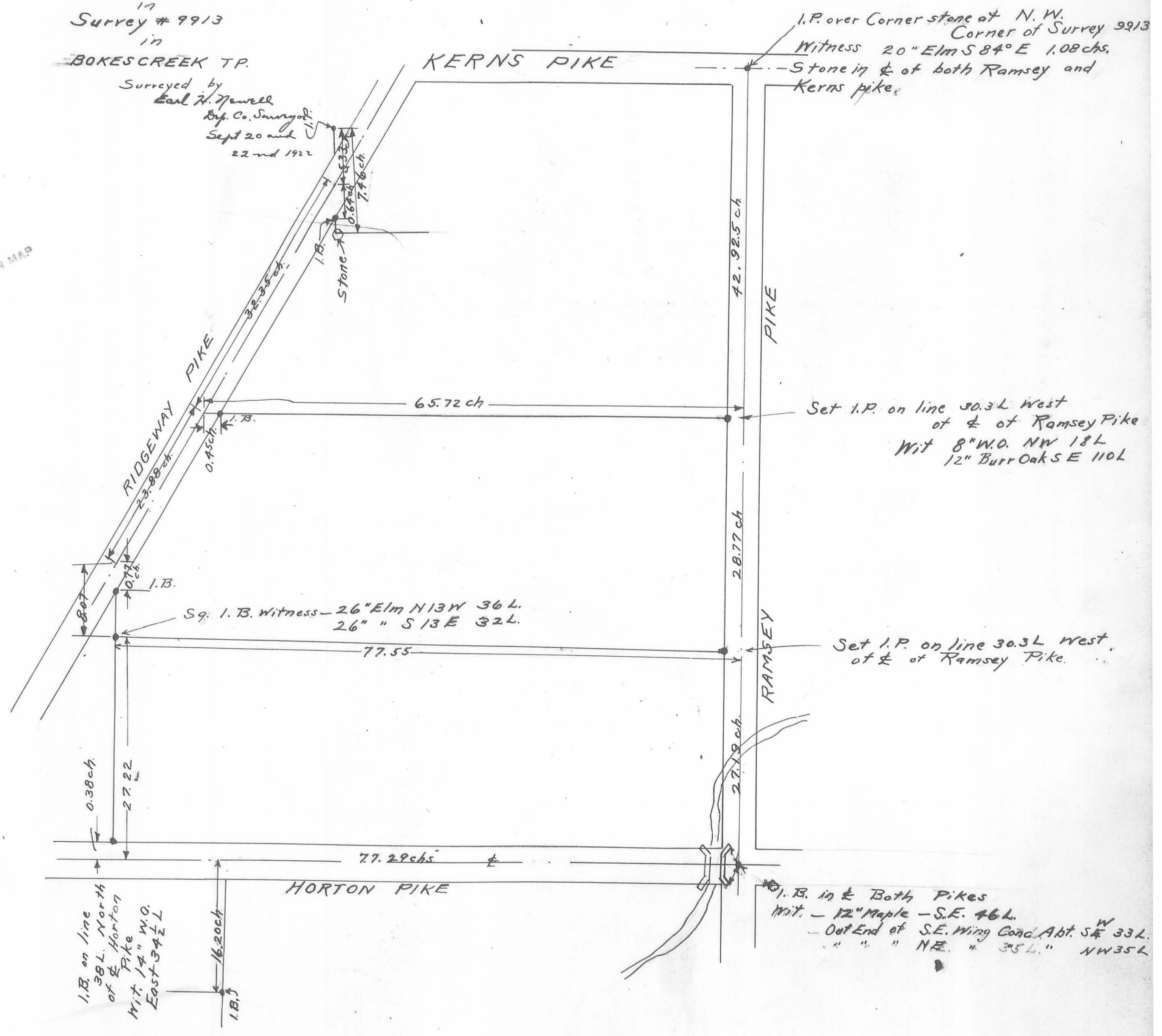


Survey of lines
For
Jasper McAdams
Campbell Bros
Lawrence Heirs
in
Survey # 9913
in

BOKES CREEK TP.

Surveyed by
Earl H. Newell
Dip. Co. Surveyor
Sept 20 and
22nd 1922

247
INDEXED ON MAP



I.P. over Corner stone at N.W. Corner of Survey 9913
Witness 20" Elm S 84° E 1.08 chs.
Stone in & of both Ramsey and Kerns pike.

Set I.P. on line 30.3L West of & of Ramsey Pike
Wit 8" W.O. NW 18L
12" Burr Oak S E 110L

Set I.P. on line 30.3L West of & of Ramsey Pike.

Sq. I.B. witness - 26" Elm N13W 36L.
26" " S13E 32L.

I.B. in & Both Pikes
Wit. - 12" Maple - S.E. 46L.
- Out End of S.E. Wing Cond. Abt. S 33L
" " " NE " 35L " NW 35L

I.B. on line 38L North of & Horton Pike
Wit. 14" W.O. East 34 1/2 L