

40'

8' metal

Road #138 Bookers Creek,

No stakes placed.

1833' from \pm Road #121 TO
crushed
old stone on road #138

40' Road, 117 North to
Hardin Co. Line

Vol. 10 - Page 61

Vol. 10 Page 122

1852

(1353)
INDEXED ON MAP

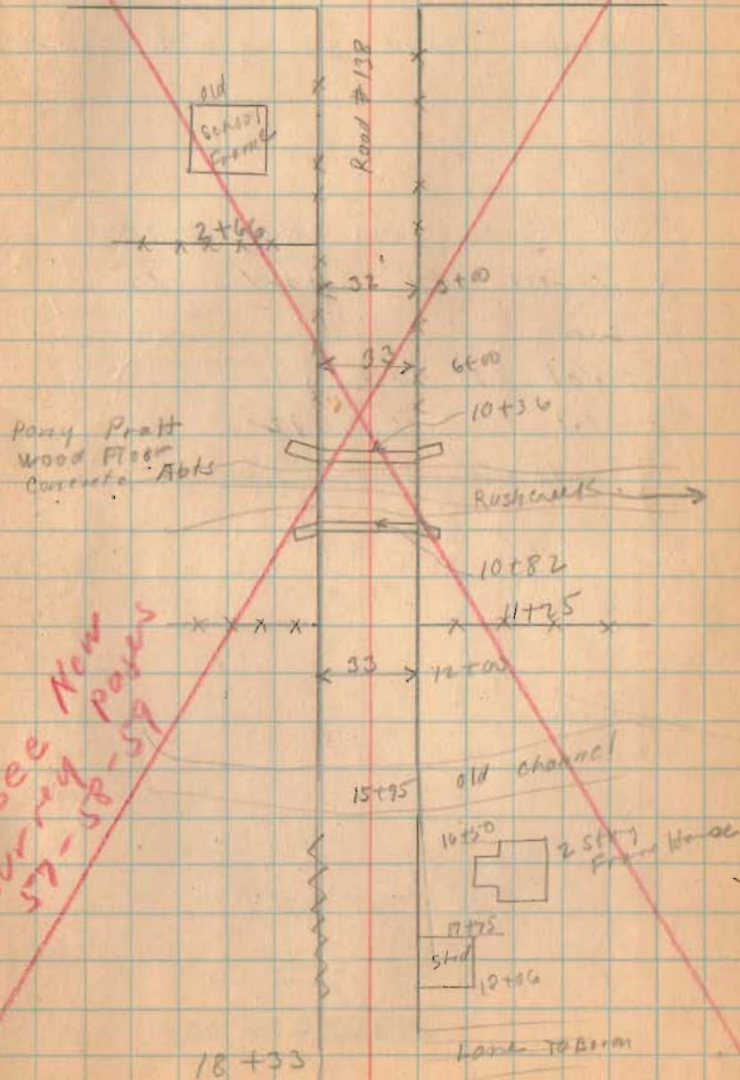
Sept. 15-1925
Cloudy
Wright
Anderson
Wickensham.

56

Road #121

Road #138

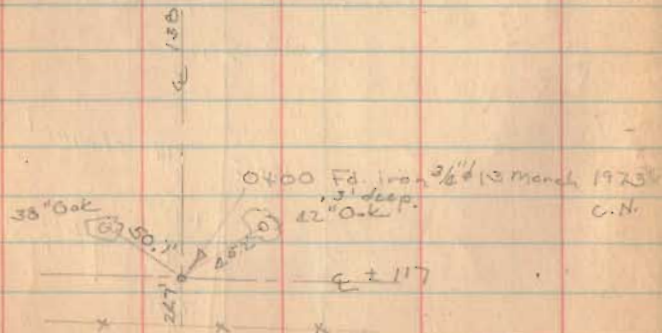
0+00 Road #121



Road 138 Bakescreek Twp
V.M.S. 9959

stakes Placed 20' from Φ for 40' Road

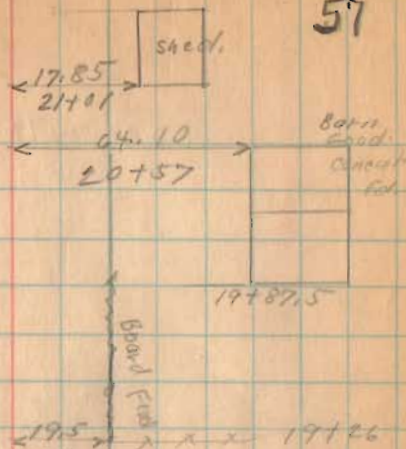
40' Road from Road #117
North to Hardin County
line
Vol. 10 Page 61
Vol. 10 Page 122
1852



INDEXED ON MAP

May - 2 - 1933
showers
Virginia
V. O. Detrick

57



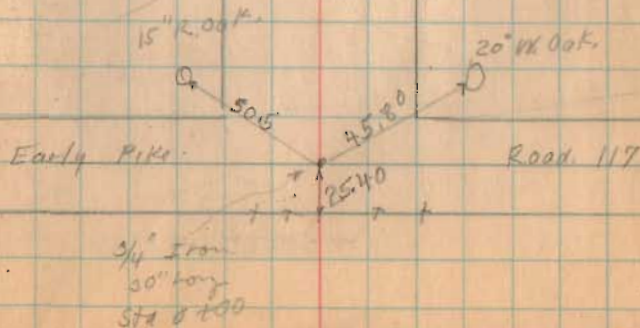
PI
Note: STA 19+24.5 RESET
BY PROJECTING TAN FROM
THE NORTH USING IRON @
STA. 38+99 AND 64.10' FROM
COR. OF BARN FOR LINE AND
MEAS. 1924.5 FROM IRON @
STA. 0+00.
LMS
3/12/73



$\Delta = 0^{\circ} 10.3' RT$
($0^{\circ} 20.9'$)

Joseph Wallace

C.K. Elliott et al.

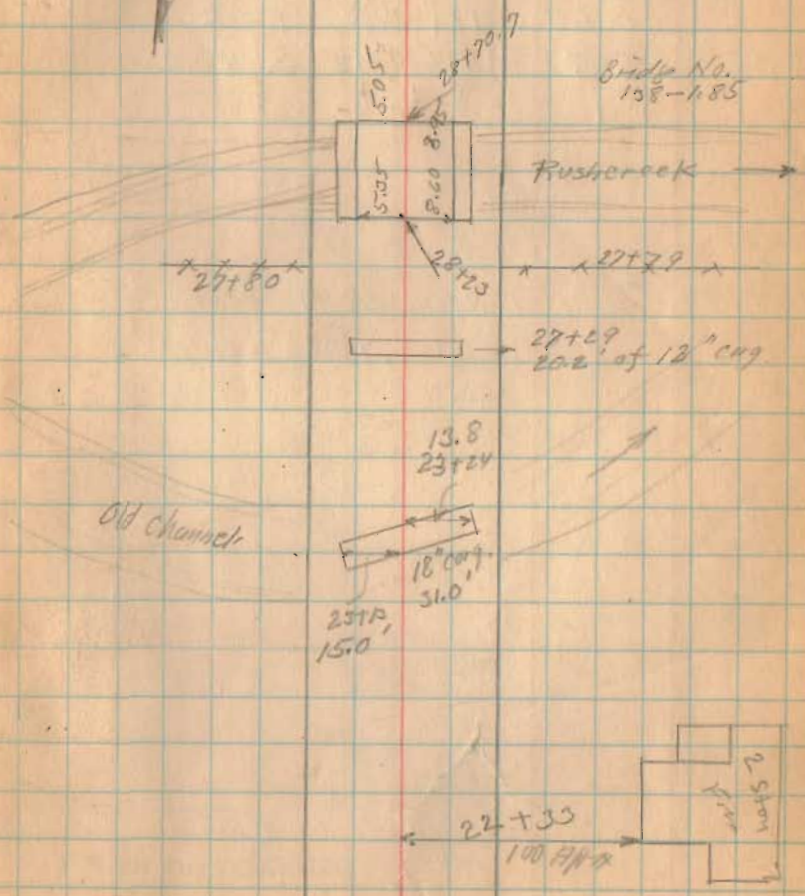


Road 138



BRIDGE HAS BEEN
CHANGED, NOT GOOD
FOR LINE. L.M.C.
3/15/73

Bridge No.
138-185



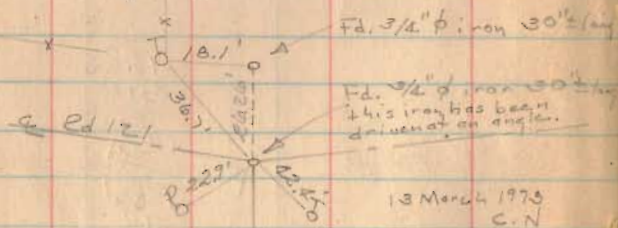
1353

INDEXED ON MAP

Road. 138

Road No. 138 North of
Road 121 see Book
555 Page 44 & 45

Length 3899 Feet
Length .7384 Miles



13 March 1973
C.N

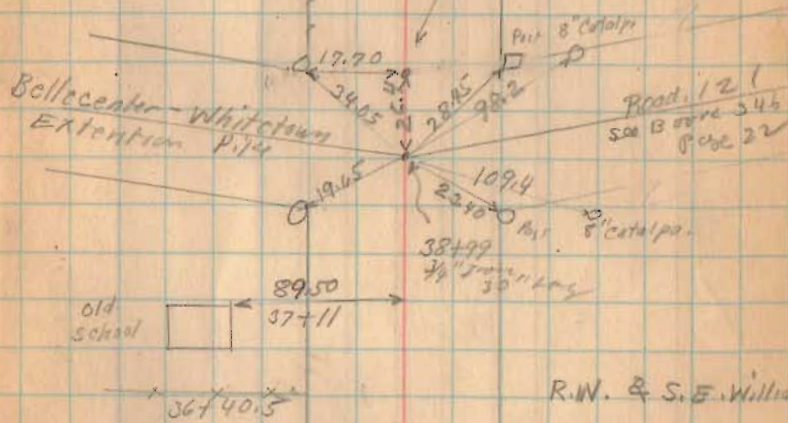
1353
INDEXED ON MAP



E129
Limes

Spike Nail by curve
Placed by Rod 30" long
Stake 20" high
20' Right
See Book 555
Page 44

R.W. & S.E. Williams



Old
School

R.W. & S.E. Williams

E129 Limes