

Book 634
" 640

Road 124
Bokescreek Turn

60' - Commissioners Journal Vol. 7 - Page 84 - 1892

40' Elliott - Reams Pike - 1914

Free Turn Pike Record # 9 Page 547

staked 30' from E for 60' Road

(Broke Axel 8-11-37)
NO SURVEY

10+50 Found 12/20/37 - both broken

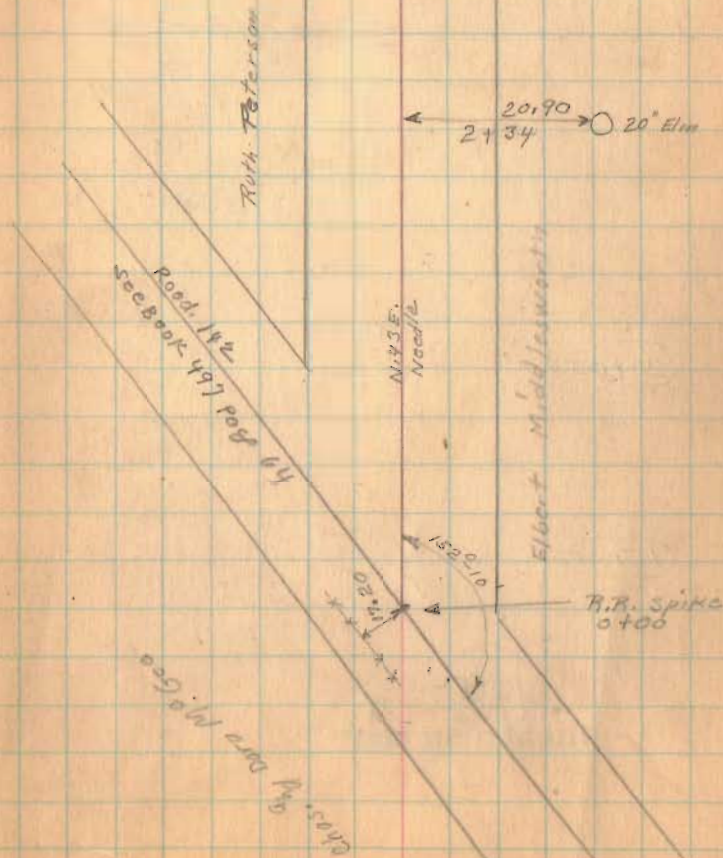
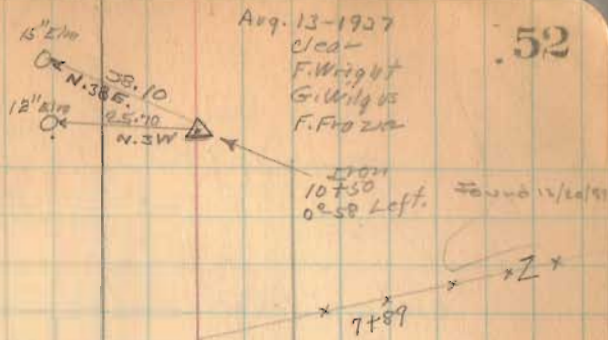
6+00

2+00 R/W Posts

1792

INDEXED ON MAP

52



Road 124

Center line stakes for new
bridge set 12/20/57

D. L. Dodson

V. L. Detrick

D. Gilbert

20+00

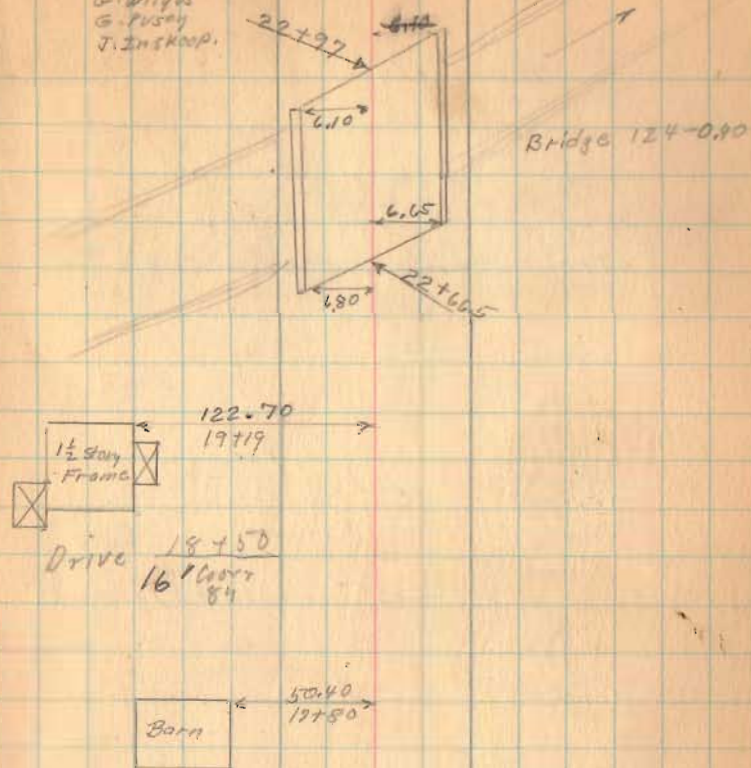
15+00

1792

INDEXED ON MAP

Aug. 16-1937
Clear-Warm
F. Wright
G. Wilges
G. Pusey
T. Zinskoop.

53



Road 124

± Bridge 64+43

Length 6443 Feet

Length 1.22 Miles = 1.22

63+00

see Page 80

59+00

54+00

50+00

Sta 60+06 to 60+90 - 10" tile

16" - 10" corr pipe Drive

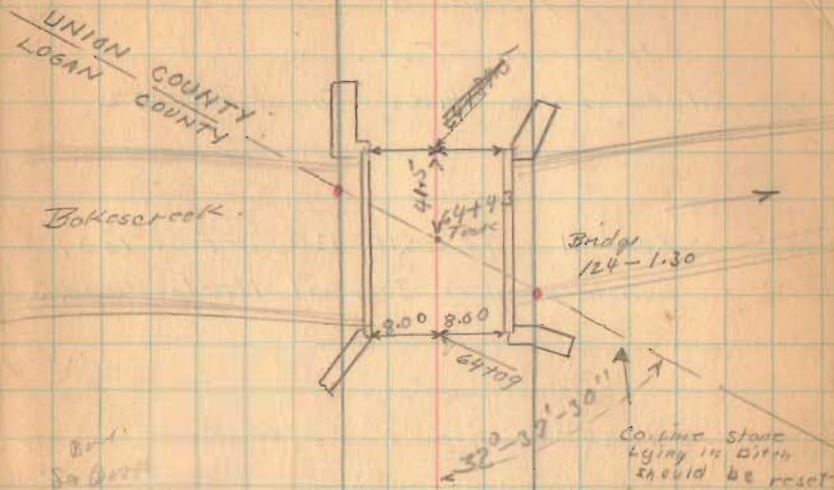
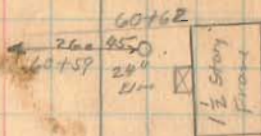
45+50

44+79

21

1792

INDEXED ON MAP

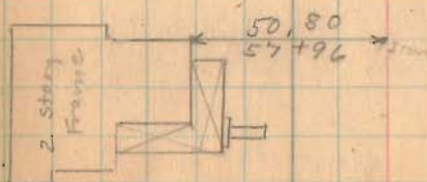
8' 11"
5' 8"
2' 4"

Drive

59+56

Drive

60+15



Nov. 4, 1937
 F. Wright
 G. Wilgus.
 W. R. Wright.

V.M.S. 9915

F
 Stone 69750

Road No. 20

Logan - Union County Line
 Roads, 20 - 124 - 20

See Page 55

- A - Berea Sandstone (Col. line) See Book D Page 34
 B - Hub
 C - Tack Bridge Floor
 D - Hub.
 E. Berea Sandstone (Col. line) See Book D Page 33

ABCDE straight Line

1792

INDEXED ON MAP

Road No. 26
 Greenville Treaty Line

V.M.S. 9893

Bokescreek Twp.
 Logan Co.
 Union Co.
 Washington Twp.

Bokescreek
 Bridge
 124 - 1,350

Road No. 124
 2014.0

170.30
 15" Pear Tree
 Sta. 547191

15 + 19.28

14 + 63.64

14 + 08'

32° 37' 30"
 36' 21"
 6.25

A Stone 0100

V.M.S. 6154