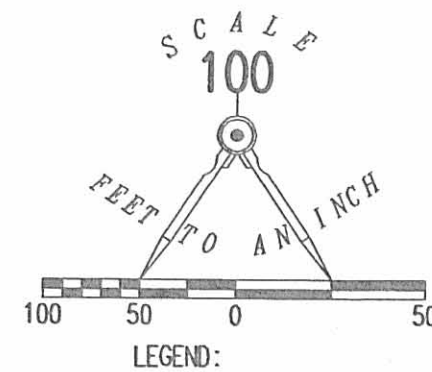


REC'D 3-16-06 SMJ OK

THE HERBERT AND CLARA DAY
LIMITED PARTNERSHIP
ORIGINAL 73.24 ACRE TRACT
O.R. 514, PG. 557

DONALD D. HAYS
96.42 ACRES
O.R. 427, PG. 664



THE HERBERT AND CLARA DAY
LIMITED PARTNERSHIP
ORIGINAL 79.32 ACRE TRACT
O.R. 514, PG. 557

6.120 ACRES

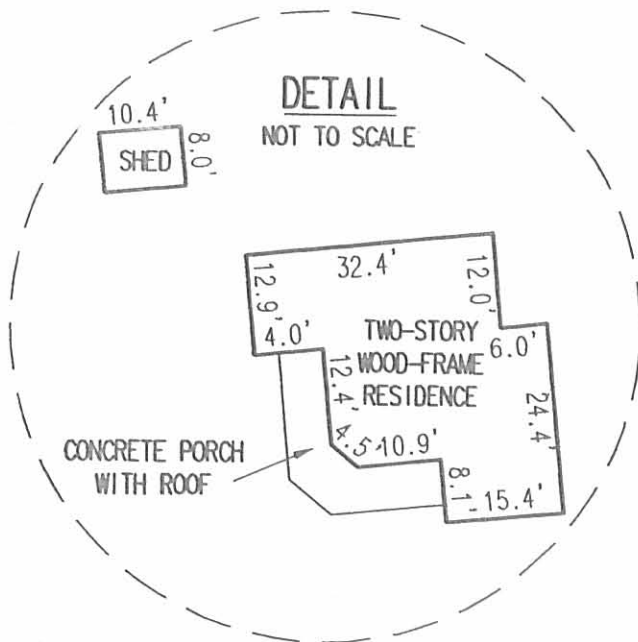
OF WHICH 0.353 ACRE IS WITHIN
THE HIGHWAY RIGHT-OF-WAY

BANK ONE, NATIONAL ASSOCIATION,
AS TRUSTEE C/O HOMECOMINGS
FINANCIAL NETWORK INC.
6.08 ACRES
O.R. 765, PG. 199

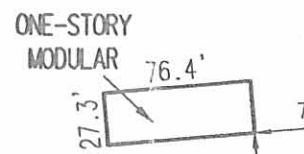
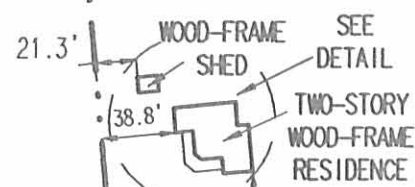
RETRACEMENT SURVEY OF THE
BANK ONE, NATIONAL ASSOCIATION, AS TRUSTEE
C/O HOMECOMINGS FINANCIAL NETWORK INC.

6.08 ACRE TRACT
OFFICIAL RECORD 765, PAGE 199
VIRGINIA MILITARY SURVEY 9891
BOKESCREEK TOWNSHIP
LOGAN COUNTY, OHIO

MICHAEL A. RENKERT
6.49 ACRES
O.R. 115, PG. 274



VIRGINIA MILITARY SURVEY 9890
N 05°17'11" W 525.87'
VIRGINIA MILITARY SURVEY 9891



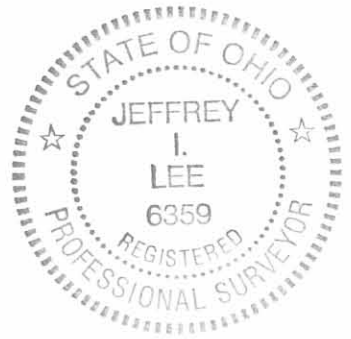
VIRGINIA MILITARY SURVEY 9890
GREENVILLE TREATY LINE

513.11'
S 84°30'00" W
(BASIS FOR BEARINGS)
COUNTY HIGHWAY 26 (60')

VIRGINIA MILITARY SURVEY 9891
VIRGINIA MILITARY SURVEY 7995

SURVEYED BY:

Jeffrey I. Lee
JEFFREY I. LEE
PROFESSIONAL SURVEYOR 6359
MARCH 10, 2006



COPYRIGHT 2006 BY:
LEE SURVEYING & MAPPING CO., INC.
117 North Madriver Street
BELLEFONTAINE, OHIO 43311
(937) 593-7335

2 WORKING DAYS
BEFORE YOU DIG
CALL TOLL FREE 800-362-2764
OHIO UTILITIES PROTECTION SERVICE

INDEXED ON MAP
39360 2P

KSR D0306 4200036 L-4200-3

REC'D 9-21-06 SMJ OK

Lee Surveying and Mapping Co., Inc.

Land Surveys • Topography • Subdivisions • Construction Layout

117 N. Madriver St.
Bellefontaine OH 43311



Phone: (937) 593-7335
Fax: (937) 593-7444

1975-2005 - 30 YEARS OF EXCELLENCE

**PALMER
2.000 ACRES**

Lying in Virginia Military Survey 9891, Bokescreek Township, Logan County, Ohio.

Being out of the Duane E. Palmer 6.08 acre tract as deeded and described in Official Record 827, Page 229 of the Logan County Records of Deeds and being more particularly described as follows:

Beginning at a railroad spike found on the southwest corner of Virginia Military Survey 9891 on the center-line of County Highway 26.

THENCE, with the west line of Virginia Military Survey 9891 and the east line of The Herbert and Clara Day Limited Partnership original 73.24 acre tract (O.R. 514, Pg. 557), N 5°-17'-11"W, a distance of 525.87 feet to a 5/8 inch iron rod set, passing a 5/8 inch iron rod set at 30.00 feet.

THENCE, with a south line of the said 73.24 acre tract, N 85°-56'-21"E, a distance of 166.37 feet to a 5/8 inch iron rod set.

THENCE, S 5°-17'-11"E, a distance of 521.69 feet to a MAG nail set on the south line of Virginia Military Survey 9891 on the center-line of County Highway 26, passing a 5/8 inch iron rod set at 491.69 feet.

THENCE, with the south line of Virginia Military Survey 9891 and the center-line of County Highway 26, S 84°-30'-00"W, a distance of 166.33 feet to the point of beginning.

Containing 2.000 acres, of which 0.115 acre is within the highway right-of-way.

The basis for bearings is the south line of Virginia Military Survey 9891, being S 84°-30'-00"W, and all other bearings are from angles and distances measured in a field survey by Lee Surveying and Mapping Co., Inc. on September 19, 2006.

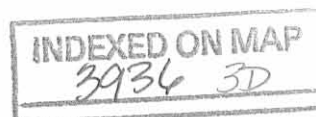


ORIGINAL STAMP IN GREEN

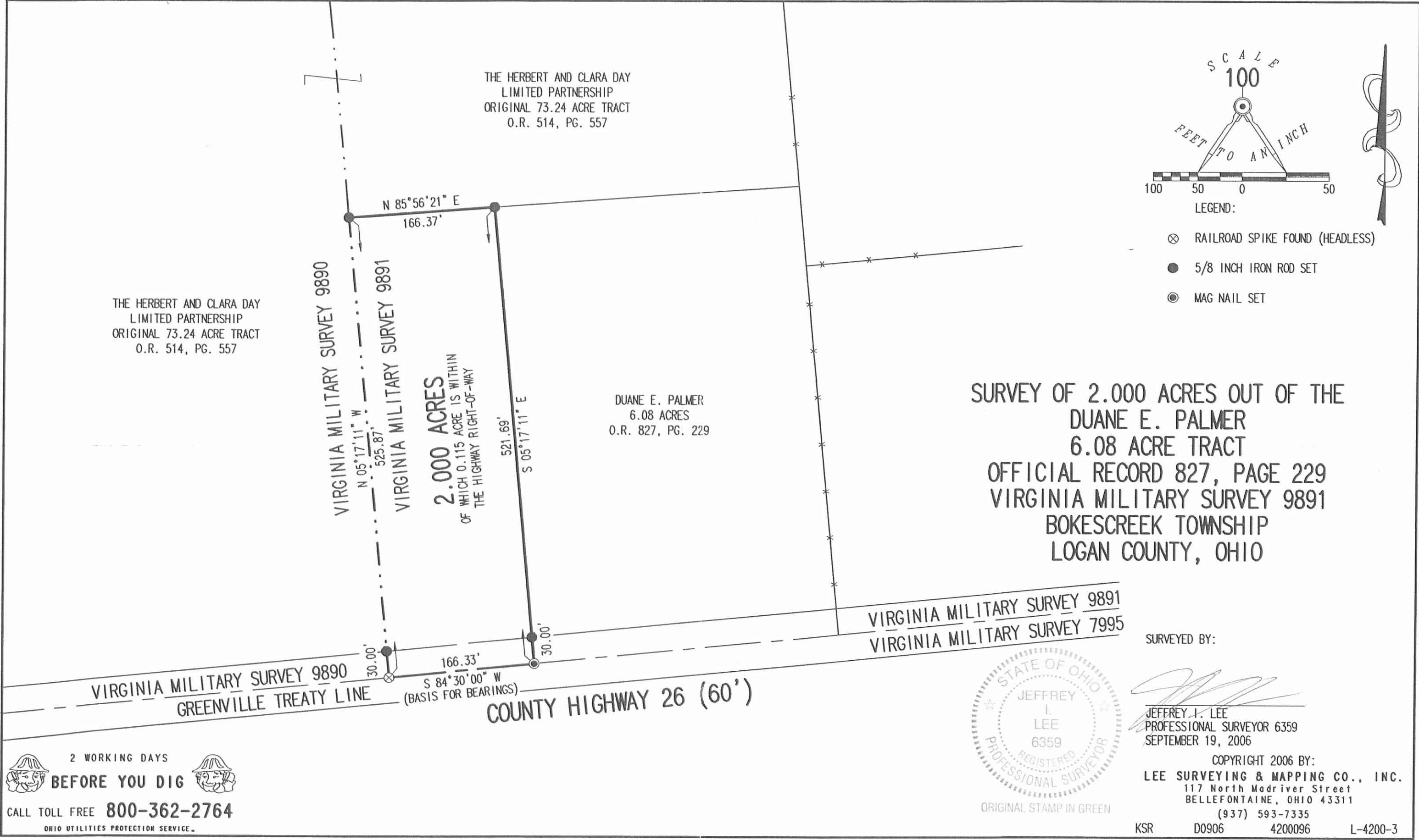
Description prepared by:

Jeffrey I. Lee
Professional Surveyor 6359
September 19, 2006

4200096



REV'D 9-21-06 SML/AL



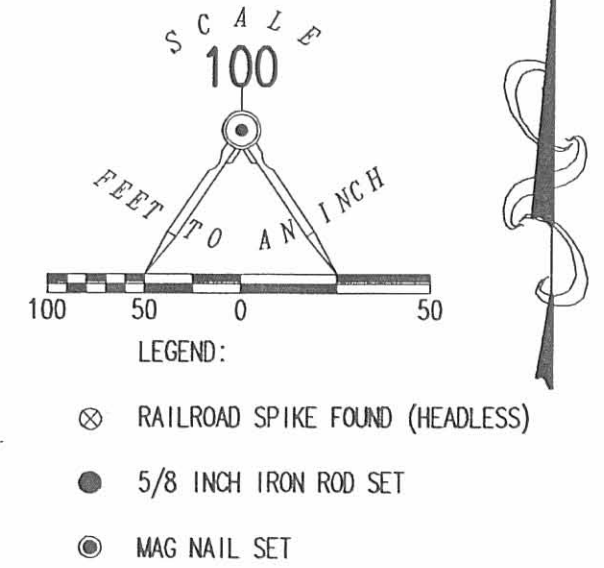
THE HERBERT AND CLARA DAY
LIMITED PARTNERSHIP
ORIGINAL 73.24 ACRE TRACT
O.R. 514, PG. 557

THE HERBERT AND CLARA DAY
LIMITED PARTNERSHIP
ORIGINAL 73.24 ACRE TRACT
O.R. 514, PG. 557

VIRGINIA MILITARY SURVEY 9890
N 05°17'11" W 525.87'
VIRGINIA MILITARY SURVEY 9891
2.000 ACRES
OF WHICH 0.115 ACRE IS WITHIN
THE HIGHWAY RIGHT-OF-WAY

DUANE E. PALMER
6.08 ACRES
O.R. 827, PG. 229

SURVEY OF 2.000 ACRES OUT OF THE
DUANE E. PALMER
6.08 ACRE TRACT
OFFICIAL RECORD 827, PAGE 229
VIRGINIA MILITARY SURVEY 9891
BOKESCREEK TOWNSHIP
LOGAN COUNTY, OHIO



VIRGINIA MILITARY SURVEY 9890
GREENVILLE TREATY LINE

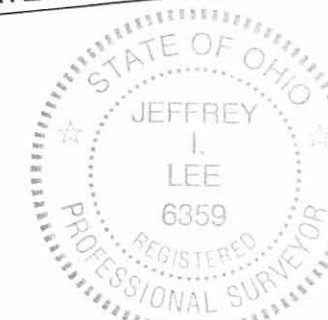
S 84°30'00" W
(BASIS FOR BEARINGS)

COUNTY HIGHWAY 26 (60')

VIRGINIA MILITARY SURVEY 9891
VIRGINIA MILITARY SURVEY 7995

SURVEYED BY:

Jeffrey I. Lee
JEFFREY I. LEE
PROFESSIONAL SURVEYOR 6359
SEPTEMBER 19, 2006



ORIGINAL STAMP IN GREEN

COPYRIGHT 2006 BY:
LEE SURVEYING & MAPPING CO., INC.
117 North Madriver Street
BELLEFONTAINE, OHIO 43311
(937) 593-7335

KSR D0906 4200096 L-4200-3

2 WORKING DAYS
BEFORE YOU DIG
CALL TOLL FREE **800-362-2764**
OHIO UTILITIES PROTECTION SERVICE.

INDEXED ON MAP
3936 3P