

Ramsey Survey
Bokescreek Township

The following described real estate situated in the Township of Bokescreek, County of Logan, State of Ohio and being a part of Virginia Military Survey No. 9938 and being more particularly described as follows:

Beginning at a P. K. Nail in the apparent centerline of C. H. No. 50 (Valley Pike), in the east line of Herbert Cronkleton's present 48.41 Acre tract and a southerly corner to Wilbur M. Ramsey's present 103.60 Acre tract;

Thence with the apparent centerline of C. H. No. 50, N. 83° 36.8' E. 135.95 feet to a point, said point being a southerly corner to Ramsey's 103.60 Acre tract;

Thence with an east line of Ramsey's tract, N. 13° 11.5' W. 439.00 feet to a concrete corner post (an interior corner to Ramsey's tract), passing through a wood post at 28.17 feet;

Thence with a south line to Ramsey's tract, N. 77° 17.5' E. 397.05 feet to a stone, southeast corner to Ramsey's tract and southwest corner to Earl Jacob's present 20.00 Acre tract;

Thence with Jacob's south line, N. 77° 32.0' E. 352.68 feet to a stone, southeast corner to Jacob's 20.00 Acre tract and southwest corner to Earl Jacob's present 77.23 Acre tract;

Thence with the south line of Jacob's present 77.23 Acre tract the following two courses and distances, N. 77° 53.6' E. 1,099.98 feet to a wood corner post (passing the centerline of S. R. No. 292 at 870 feet, plus or minus) and N. 74° 20.3' E. 1,119.35 feet to a wood corner post in the east line of V. M. S. No. 9938 and the west line of V. M. S. No. 10060, also being the southeast corner to said Jacob's tract;

Thence with the line between V. M. S. No. 9938 and 10060, S. 12° 00' E. 2,116.77 feet to a point in the north line Earl Jacobs present 52.31 Acre tract, (there being 31.29 Acres in V. M. S. No. 9938 and 21.02 Acres in V. M. S. No. 10060);

INDEXED ON MAP
5234 1D-1

(2)

Thence with the north line of Jacob's tract the following four courses and distances, S. $89^{\circ} 59.7'$ W. 78.27 feet to a steel post in concrete, N. $88^{\circ} 40.0'$ W. 1,465.56 feet to a steel post in concrete, N. $13^{\circ} 13.9'$ W. 48.36 feet to a steel post in concrete and S. $76^{\circ} 58.9'$ W. 792.91 feet to a P. K. Nail in the centerline of S. R. No. 292 (passing through a steel post in concrete at 761.18 feet, said P. K. Nail being the northwest corner to Jacob's tract;

Thence with the centerline of S. R. No. 292, S. $5^{\circ} 52.4'$ W. 22.00 feet to a Harrow Tooth Iron, said iron being a southwest corner to the Jacob's tract and being in the north line to Mayme L. Lindamood's present 45.58 Acre tract;

Thence with Lindamood's north line, S. $77^{\circ} 30.5'$ W. 786.34 feet to an iron bar, southeast corner to Herbert Cronkleton's present 48.11 Acre tract;

Thence with Cronkleton's east line, N. $12^{\circ} 09.2'$ W. 1,249.05 feet to the place of beginning, containing 124.70 Acres, more or less.

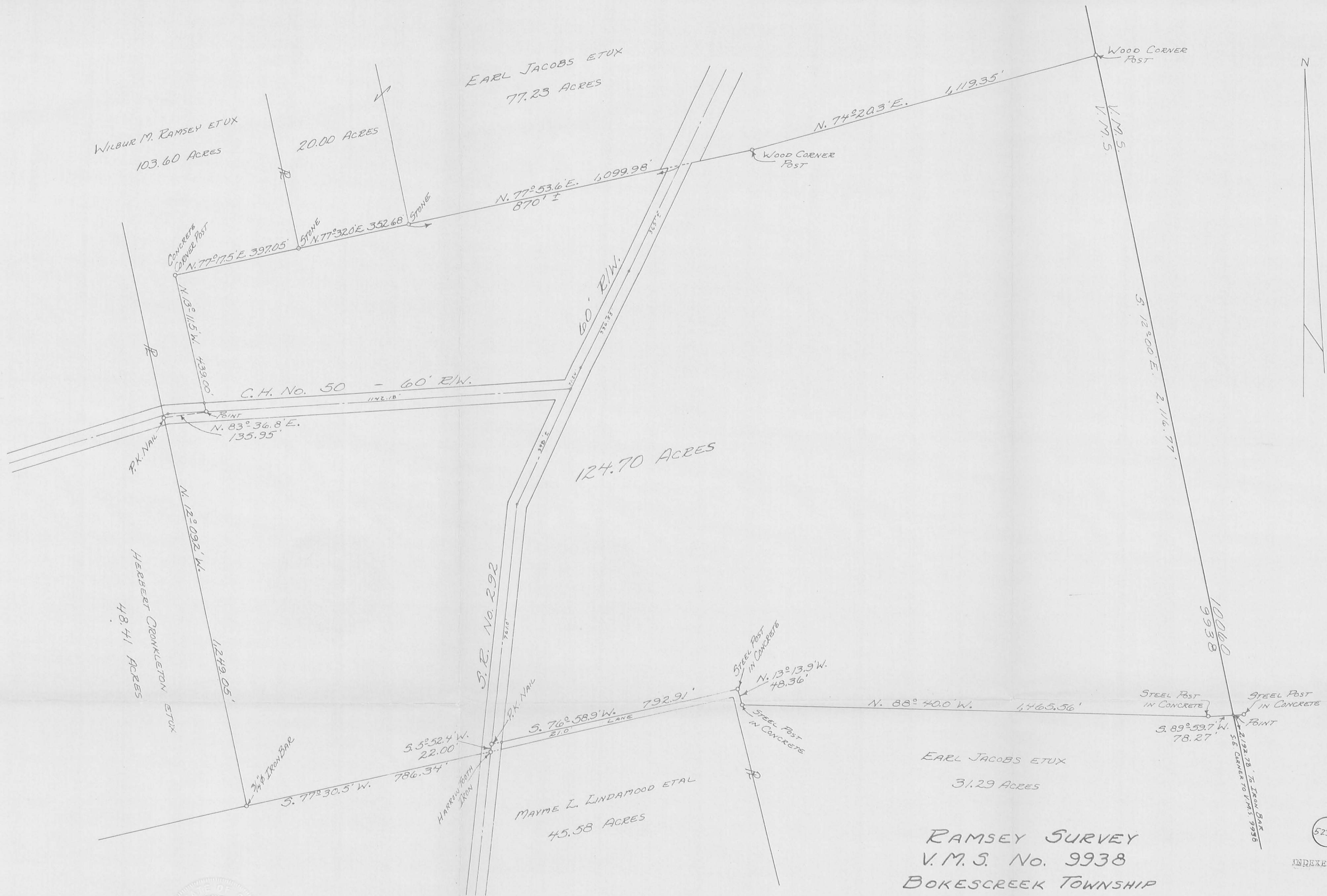
Of the above described tract, there is 1.58 Acres in the right of way of C. H. No. 50 and 2.69 Acres in the right of way of S. R. No. 292.

I hereby certify that this is a true and accurate description of a survey made by Leslie H. Geslin, Reg. Sur. No. 5248 and Daniel E. Gilbert, Reg. Sur. No. 5402 in April and May, 1973.

Daniel E. Gilbert P.S.
Daniel E. Gilbert, P.S.
Reg. Sur. No. 5402
1041 N. Main St.
Bellefontaine, Ohio 43311



INDEXED ON MAP
5234 1D-2



SURVEYED BY:
 LESLIE H. GEESLIN, P.S.
 REG. SUR. No. 5248
 Box 274
 RUSHSVLVANIA, OHIO 43347

PLATTED BY:
 DANIEL E. GILBERT, P.S.
 REG. SUR. No. 5402
 1041 N. MAIN ST.
 BELLEFONTAINE, OHIO 43311



RAMSEY SURVEY
 V.M.S. No. 9938
 BOKESCREEK TOWNSHIP
 LOGAN COUNTY, OHIO
 APRIL-MAY, 1973

SCALE: 1"=200'

5234 1P
 INDEXED ON MAP

REV 6-11-99 OKGCH
REVISIONS

LESLIE H. GEESLIN
REGISTERED SURVEYOR 5248
P. O. BOX 274
RUSHSVLVANIA, OHIO 43347
TELEPHONE: (937) 468-2793
FAX: (937) 468-2080

RAMSEY SURVEY

August 2, 1999

The following described real estate situated in the State of Ohio, County of Logan, Township of Bokescreek, being part of Virginia Military Survey 9938 and more particularly described as follows:

Beginning at a magnetic nail set in the centerline of State Route 292 in the south line of Phillip Ramsey etux's 78 acre and 28 pole tract (Tract III Parcel B) as described in D. B. Vol. 404 Page 482.

Thence with the centerline of said S. R. 292 S. 33° 22' 00" W. 541.75 feet to a magnetic nail set.

Thence N. 62° 20' 13" W. 280.69 feet to a 5/8 inch iron bar set, passing a 5/8 inch iron bar set at 30.15 feet.

Thence N. 11° 13' 48" E. 284.17 feet to a 5/8 inch iron bar set in the south line of said Phillip Ramsey's tract.

Thence with said Ramsey's south line N. 84° 56' 59" E. 493.14 feet to the place of beginning, passing the west right of way line of S. R. 292 at 451.02 feet and a 12" wood corner post found at 454.60 feet.

Containing 3.281 acres more or less, of which 0.365 acre is in the right of way of S. R. 292.

The above described 3.281 acre tract being part of Newton W. Ramsey etux's 124.70 acre tract as described in D. B. Vol. 387 Page 208.

Bearings are based on an assumed bearing (S. 33° 22' 00" W.) for the centerline of S. R. 292 in this field survey by Leslie H. Geeslin, Reg. Surveyor No. 5248, on August 2, 1999.

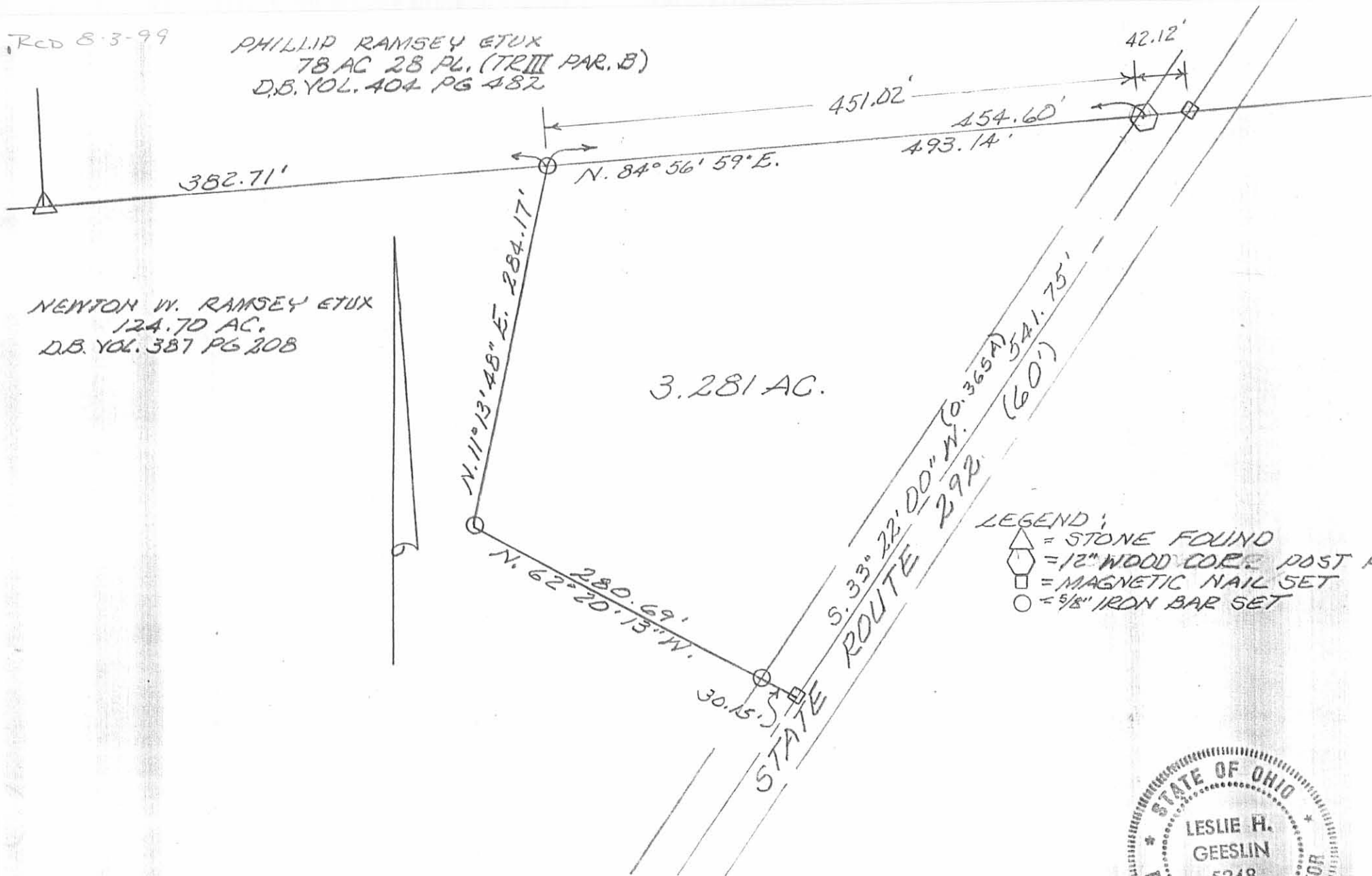


INDEXED ON MAP
5234 2D

Leslie H. Geeslin

RCD 8-3-99





PHILLIP RAMSEY ETUX
78 AC 28 PL. (TR III PAR. B)
D.B. VOL. 404 PG 482



NEWTON W. RAMSEY ETUX
124.70 AC.
D.B. VOL. 387 PG 208

3.281 AC.

LEGEND:

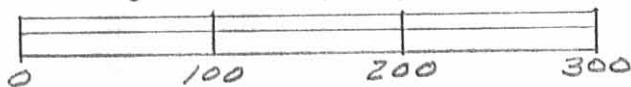
-  = STONE FOUND
-  = 12" WOOD CORE POST FD
-  = MAGNETIC NAIL SET
-  = 5/8" IRON BAR SET

SURVEY OF 3.281 AC. TRACT IN V.M.S. 9938,
BOKESCREEK TOWNSHIP, LOGAN COUNTY,
OHIO FOR NEWTON RAMSEY.

AUGUST 2, 1999

SCALE: 1" = 100'

INDEXED ON MAP
5234 2P



Leslie H. Geeslin
LESLIE H. GEESLIN
RUSHsylvania, OHIO
PH 937-468-2793

10-24-19



APPROVED



ARCHITECTURE • ENGINEERING • PLANNING
SURVEYING • CONSTRUCTION SERVICES

INNOVATIVE IDEAS
EXCEPTIONAL DESIGN
UNMATCHED CLIENT SERVICE

RAMSEY

1.438 ACRES

Lying in Virginia Military Survey 9938, Bokescreek Township, Logan County, Ohio (all records referenced herein refer to the Logan County Records of Deeds).

Being out of the Joseph W. Ramsey and Rebecca L. Ramsey 121.419 acre tract as deeded and described in Official Record 1204, Page 245, Tract VI and being more particularly described as follows:

BEGINNING at a MAG nail set at the intersection of the center-lines of Ohio Route 292 (60 feet wide) and County Highway 50 (60 feet wide);

THENCE, with said center-line of County Highway 50, **N 86°-28'-40" W**, a distance of **181.58 feet** to a MAG nail set;

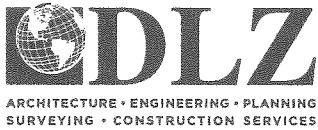
THENCE, with a new division line through said 121.419 acre tract, **N 11°-12'-32" E**, passing an iron rod set at a distance of 30.27 feet, a total distance of **325.84 feet** to a 5/8 inch iron rod found (I.D. cap stamped "L GEESLIN S5248") at the southwest corner of the David F. Ramsey and Elizabeth G. Ramsey 3.281 acre tract as deeded and described in Official Record 500, Page 897;

THENCE, with a common line to said 121.419 acre and 3.281 acre tracts, **S 62°-18'-14" E**, passing a 5/8 inch iron rod found (I.D. cap stamped "L GEESLIN S5248") at a distance of 250.28 feet, a total distance of **280.49 feet** to a MAG nail found on the center-line of said Ohio Route 292;

THENCE, with said center-line, the following two (2) courses:

- 1) **S 33°-15'-53" W**, a distance of **200.14 feet** to a MAG nail set at Station 330+61 (Logan County Engineer's File X-19); and
- 2) **S 32°-00'-53" W**, a distance of **39.00 feet** to the **POINT OF BEGINNING**.

INDEXED ON MAP
5234



INNOVATIVE IDEAS
EXCEPTIONAL DESIGN
UNMATCHED CLIENT SERVICE

Containing **1.438 acres**, more or less, of which 0.274 acre is within the highway rights-of-way.

Iron rods set, where indicated, are 30 inches in length, 5/8 inch in diameter with a plastic I.D. cap stamped "DLZ OHIO, INC".

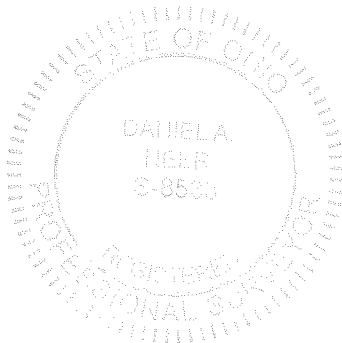
Property is subject to any and all previous easements and rights-of-way of record.

The basis for bearings described herein, is an assumed bearing for the center-line of Ohio Route 292, being S 33°-15'-53" W. Distances are expressed in U.S. Survey Feet. All other measurements are from angles and distances measured in a field survey by DLZ on October 22, 2019.

Description prepared by:

INDEXED ON MAP

5234




Daniel A. Neer

Professional Surveyor No. 8533

October 23, 2019

1921-2085.00



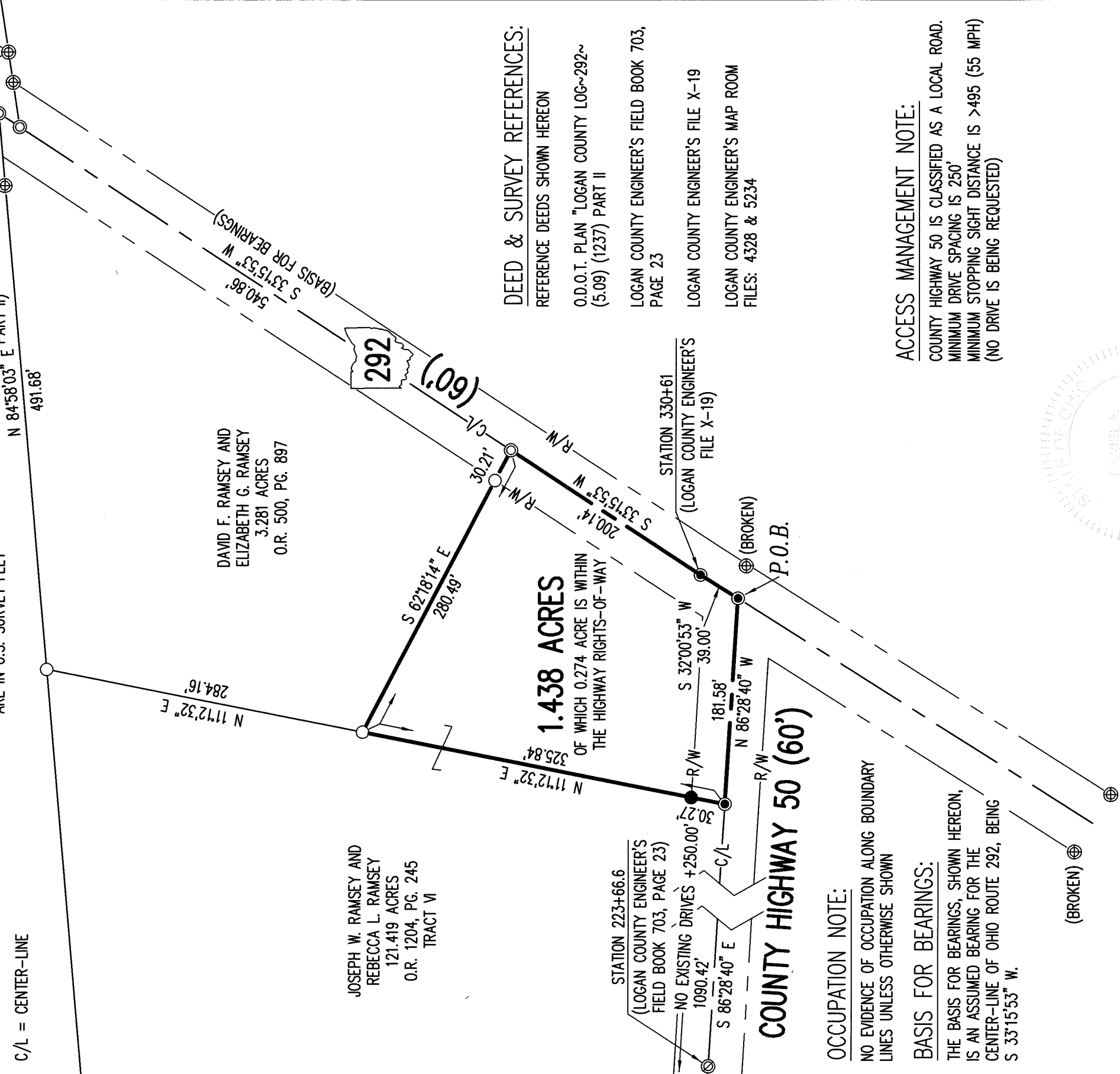
APPROVED 10-24-19

BASIS FOR BEARINGS:

- ⊙ MAG NAIL FOUND
- MAG NAIL SET
- ⊕ CONCRETE RIGHT-OF-WAY MONUMENT
- ⊙ 5/8 INCH IRON BAR FOUND
- 5/8 INCH IRON ROD FOUND WITH PLASTIC I.D. CAP STAMPED "L GEESLIN S5248"
- 5/8 INCH BY 30 INCH IRON BAR SET WITH PLASTIC I.D. CAP STAMPED "DLZ OHIO INC"
- P.O.B. = POINT OF BEGINNING
- R/W = RIGHT-OF-WAY
- C/L = CENTER-LINE



SCALE: 1" = 100'
DISTANCES SHOWN HEREON
ARE IN U.S. SURVEY FEET



DEED & SURVEY REFERENCES:
REFERENCE DEEDS SHOWN HEREON

- O.D.O.T. PLAN "LOGAN COUNTY LOG~292~ (5.09) (1237) PART II
- LOGAN COUNTY ENGINEER'S FIELD BOOK 703, PAGE 23
- LOGAN COUNTY ENGINEER'S FILE X-19
- LOGAN COUNTY ENGINEER'S MAP ROOM FILES: 4328 & 5234

OCCUPATION NOTE:

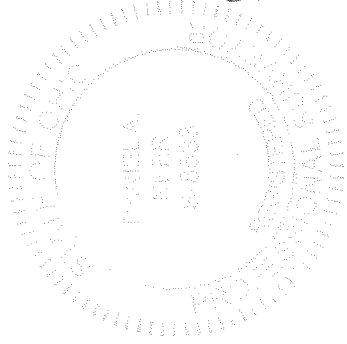
NO EVIDENCE OF OCCUPATION ALONG BOUNDARY LINES UNLESS OTHERWISE SHOWN

BASIS FOR BEARINGS:

THE BASIS FOR BEARINGS, SHOWN HEREON, IS AN ASSUMED BEARING FOR THE CENTER-LINE OF OHIO ROUTE 292, BEING S 33°15'53" W.

ACCESS MANAGEMENT NOTE:

COUNTY HIGHWAY 50 IS CLASSIFIED AS A LOCAL ROAD. MINIMUM DRIVE SPACING IS 250' MINIMUM STOPPING SIGHT DISTANCE IS >495 (55 MPH) (NO DRIVE IS BEING REQUESTED)



DANIEL A. NEER
PROFESSIONAL SURVEYOR NO. 8533
OCTOBER 22, 2019

THIS SURVEY WAS PREPARED IN THE ABSENCE OF A COMPLETE AND ACCURATE TITLE SEARCH AND DOES NOT GUARANTEE TITLE.

INDEXED ON MAP
5234

COPYRIGHT 2019 BY:

117 N. Madriver Street • Bellefontaine, OH 43311
(937) 593-7335 • www.dlz.com
Project #1921-2085.00

SURVEY OF 1.438 ACRES

VIRGINIA MILITARY SURVEY 9938
BOKESCREEK TOWNSHIP
LOGAN COUNTY, OHIO

DRAWN BY:	DESCRIPTION	REV. NO.	DATE
KSS			10/23/2019