

Received 7-30-87 MK  
OK

# Lee Surveying and Mapping Co.



Farm Surveys • Lot Surveys • Topography • Subdivisions • Construction Layout

855 EAST SANDUSKY AVENUE  
BELLEFONTAINE, OHIO 43311

(513) 593-5780

CLAYTON M. LEE, P.S.  
JEFFREY I. LEE, P.S.

~~MOORE~~  
FOGEL SURVEY

Lying in V.M.S. 9915, Bokescreek Township, Logan County, Ohio.

Being out of that 89 acre tract in the name of Fogel as deeded and described in Volume 384, Page 305, Tract I of the Logan County Records of Deeds and being more particularly described as follows:

Beginning at a railroad spike set on the center-line of County Highway 20, being S 81°-00' W, a distance of 864.21 feet from the intersection of County Highway 20 with the Bokescreek Township, Logan County-Washington Township, Union County line, passing the old county line at 82.50 feet.

THENCE, continuing with the center-line of County Highway 20, S 81°-00' W, a distance of 345.29 feet to a railroad spike set at the grantor's southwest corner and being Logan County Engineer's Station 100+65.1 (Field Book 646, Page 79).

THENCE, N 3°-54'-35" W, with a fence line and the east line of the Diana Eversole 124.32 acres (Volume 390, Page 931), 396.00 feet to a 5/8" iron rod (set).


THENCE, N 81°-00' E, a distance of 310.15 feet to a 5/8" iron rod (set).

THENCE, S 9°-00' E, a distance of 394.44 feet to the point of beginning, passing a 5/8" iron rod set at 25 feet.

Containing 2.968 acres.

This description prepared from an actual field survey.  
Basis for bearings: Center-line of County Highway 20 (S 81°-00' W).

Prepared by:

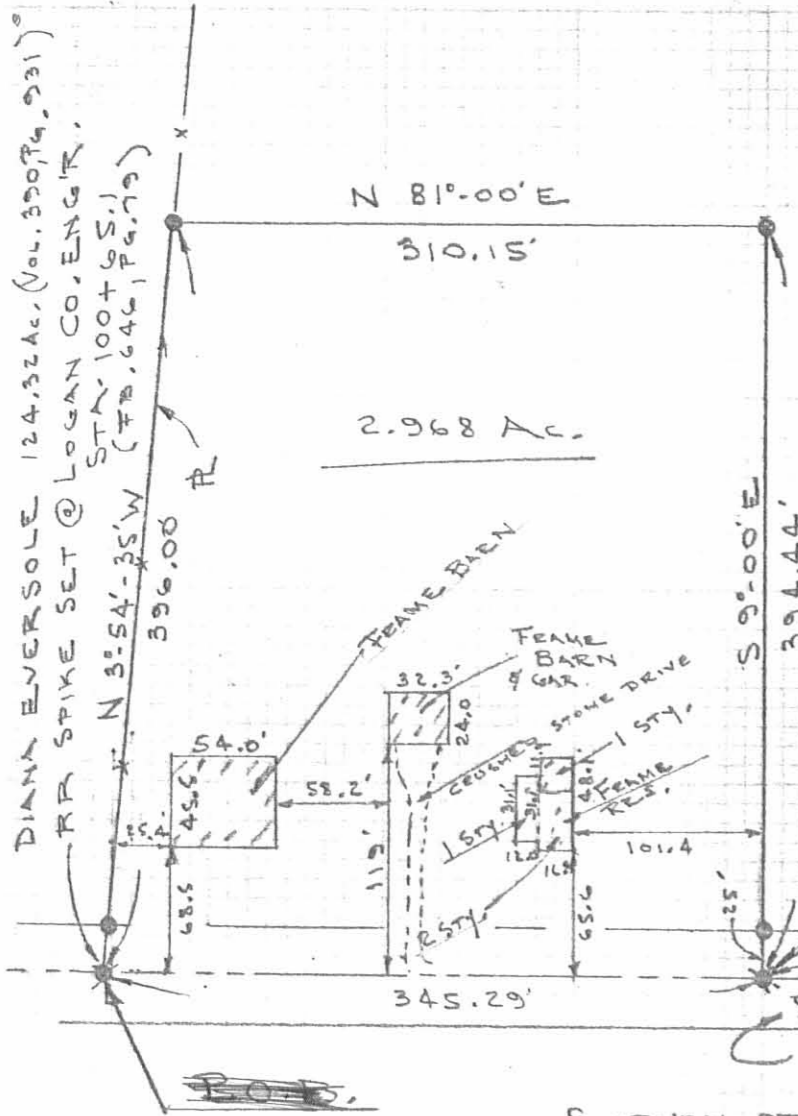
  
Clayton M. Lee  
Registered Professional Surveyor No. 6181  
July 29, 1987



ORIGINAL STAMP IN GREEN

INDEXED ON MAP  
7659 1D

L-1602



MARION D. FOGLE  
89 AC. (Vol. 384, Pg. 305)

SCALE = 1" = 100'

I hereby certify that the foregoing plat was prepared from an actual survey of the premises and that same shows the location of the boundaries and all improvements thereon; that the dimensions of the improvements and the locations thereof with respect to the boundaries are correct as shown; that there are no encroachments from nor upon subject premises.

*Clayton M. Lee*

Clayton M. Lee  
Registered Professional Surveyor No. 6181  
July 29, 1987



25.78 AC  
BOKESCREEK TWP.  
LOGAN COUNTY  
UNION COUNTY  
WASHINGTON TWP.

SURVEY OF 2.968 ACRES OUT OF THE FOGLE 89 ACRES (Vol. 384, Pg. 305) TR. 1  
V.M.S. 9915 BOKESCREEK TWP., LOGAN COUNTY, OHIO

● = 5/8" IRON ROD SET  
✱ = RR SPIKE SET

INDEXED ON MAP  
7459 1P

L-1602-4