

and James Trumbell bears S. 39° W. 19 links distant; Thence run S. 39° W. 22 chains (with the said Co. Road nearly all this distance) to a Stone; Thence N. 81½ E. 27 chains to a stone from which a Beech 10 Ln. Dim. bears North 31° E. 9 links; & a Beech 14 Ln. Dim. N. 59½ W. 37 links; Thence N. 44½ W. 18. <sup>30</sup>/<sub>100</sub> chains to the place of beginning containing twenty acres.

Chain carries

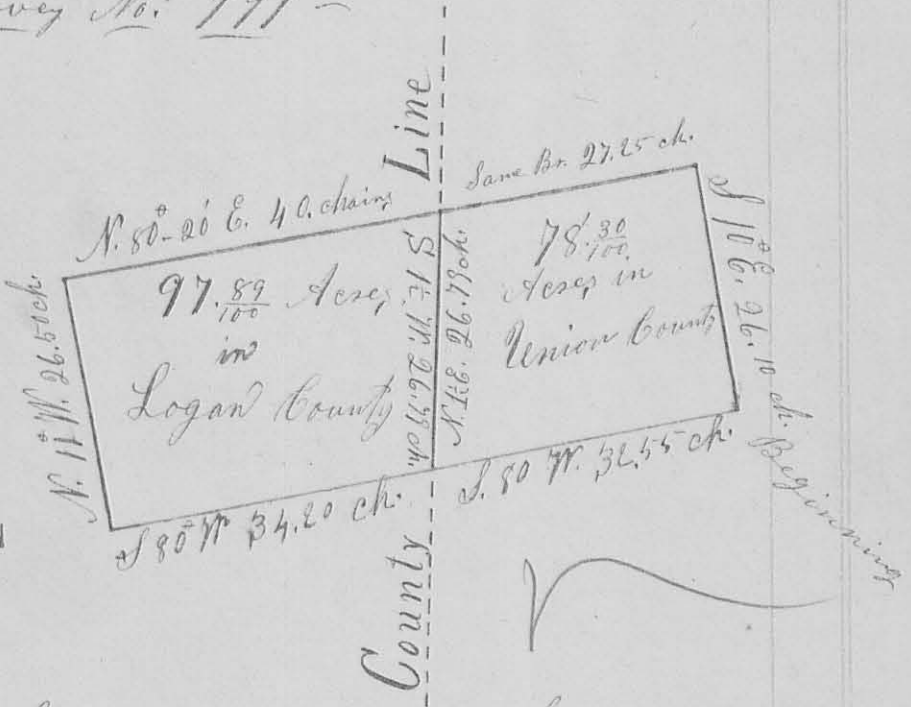
I hereby certify the foregoing plat & report to be correct: H. C. Moore, County Surveyor of Logan Co. Ohio

Survey No: 791 -

8629

Mag. Mer.

Scale  
20 Chains  
to an Inch



Surveyor's Office Bellefontaine Ohio  
July 30<sup>th</sup> A.D. 1858

The above plat is a representation of a part of Virginia Military Survey No. 9915, as Surveyed by me, H. C. Moore County Surveyor of Logan County Ohio on the 27 day of July A.D. 1858, at the request of James S. Robinson (agent) for the purpose of establishing the line & corner there to, & ascertaining the area

thereof; which I did in the following Manners,  
 to wit: Beginning at a stone, Ash, Ly<sup>W</sup> &  
 Sugar in Union County, & at the South East  
 corner of said Survey No. 99 15 Run thence  
 with the South line of said Survey S. 80° W.  $32\frac{57}{100}$   
 chains to the county line between the Counties  
 of Logan & Union, of the state of Ohio, where  
 I drove a stake & marked a Beech (Tree X)  
 18 Ln. Dim. N. 41° W. 26 links, & a Beech 15 Ln. Dim.  
 S. 15° W. 16 links; Thence continuing the same course  
 & on the said South line of said Survey, in the County  
 of Logan  $34\frac{20}{100}$  chains to 2 Sugar & a Beech, where  
 I planted a stake & marked a sugar 12 Ln. Dim.  
 N.  $34\frac{1}{2}$ ° E.  $7\frac{1}{2}$  links distant, a Beech 7 Ln. Dim. S. 31° E.  
 $2\frac{1}{2}$  links; & a Beech 5 Ln. Dim. N. 24° W. 11 links;  
 Thence N. 11° W.  $26\frac{50}{100}$  chains to a Beech Water Beech  
 & ash, where I drove a stake & marked a  
 Beech 7 Ln. Dim. N. 77° E. 15 links distant & an  
 Elm 22 Ln. Dim. S. 4° E. 26 links; Thence N. 80°  
 20' E. 40 chains to the afore said County line  
 where I drove a stake & marked a Sour Elm  
 8 Ln. Dim. S.  $83\frac{1}{2}$ ° W. 30 links, a Hickory 6 Ln. Dim.  
 S.  $23\frac{3}{4}$ ° W. 24 links, & a forked Elm, each fork 13 Ln.  
 Dim. N. 2° W.  $21\frac{1}{2}$  links; Thence continuing the  
 same course in Union County  $27\frac{65}{100}$  chains  
 to a stake in the East Original line of the said  
 Survey, & a Sugar tree & stump 24 Ln. Dim.  
 S.  $45\frac{1}{2}$ ° E.  $3\frac{1}{2}$  links; Thence with the said east  
 original line S. 10° E. (passing a stone, corner between  
 Albert & Gomm Bird at  $15\frac{40}{100}$  chains)  $26\frac{10}{100}$  chains  
 to the place of Beginning, containing  $176\frac{12}{100}$   
 Acres = From this measurement I also calculated  
 the course & distance of that part of the afore-  
 said County line passing through the aforesaid  
 premises, or described Tract of Land, and find  
 it to be S. 12° W.  $26\frac{72}{100}$  chains, (or reversed.

bearing N.  $1\frac{1}{2}$  E. 26  $\frac{79}{100}$  chains) and find that that part of the said tract of land lying & being in Logan County contains ninety seven acres & eighty nine hundredths of an acre ( $97\frac{89}{100}$  acres) and that part of the said tract of land lying & being in Union County contains seventy eight acres & thirty hundredths of an acre.

Note All the witness trees whose courses & distances are given in the foregoing notes, are marked thus 'X' in the side facing the corner.

Isaac Simpson }  
 Alex. Bolen } Chain Carrier  
 I hereby certify the foregoing Plat and report to be correct, J. C. Moore  
 Co. Surveyor of Logan Co. Va.

Survey No. 772 - V

