

Received 3-3-93
D12 9CH



Lee Surveying and Mapping Co.



Farm Surveys • Lot Surveys • Topography • Subdivisions • Construction Layout

143 EAST COLUMBUS AVENUE
BELLEFONTAINE, OHIO 43311

(513) 593-7335

JEFFREY I. LEE, P.S.

RAYMOND LANE (2.051 ACRES)

Lying in Virginia Military Survey 13068, Bokescreek Township, Logan County, Ohio.

Being out of the Raymond P. Lane and Janet I. Lane 104.65 acre tract as deeded and described in Volume 294, Page 88 of the Logan County Records of Deeds and being more particularly described as follows:

Beginning at a PK nail set on the south line of Virginia Military Survey 13068 and the center-line of State Route 47 at center-line Station 605+00 (Logan County Engineer's Plan L-34).

THENCE, with the south line of Virginia Military Survey 13068 and the center-line of State Route 47, S 89°-52'-00" E, a distance of 39.55 feet to a railroad spike set at the TRUE POINT OF BEGINNING.

THENCE, N 1°-21'-53" W, a distance of 220.04 feet to a 5/8 inch iron rod set.

THENCE, N 89°-10'-35" E, a distance of 404.14 feet to a 5/8 inch iron rod set.

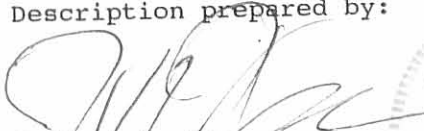
THENCE, S 0°-46'-30" W, a distance of 226.73 feet to a railroad spike set on the south line of Virginia Military Survey 13068.

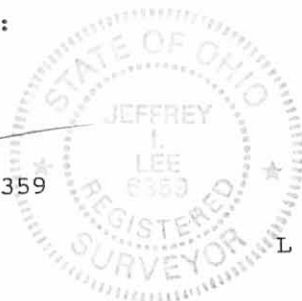
THENCE, with the south line of Virginia Military Survey 13068, N 89°-52'-00" W, a distance of 395.80 feet to the point of beginning, passing T.S. Station 607+52.55 at 182.68 feet.

Containing 2.051 acres of which 0.364 acre is within the highway right-of-way.

The basis for bearings is based upon the south line of Virginia Military Survey 13068 being N 89°-52'-00" W, and all other bearings are from angles and distances measured in a field survey by Lee Surveying and Mapping Company on February 26, 1993.

Description prepared by:

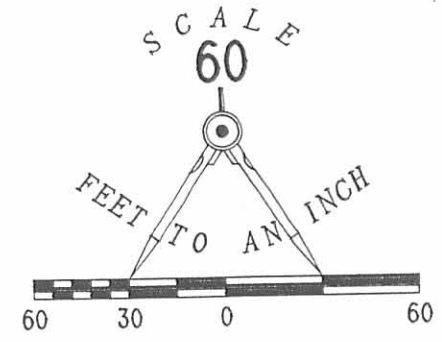

Jeffrey I. Lee
Professional Surveyor 6359
February 28, 1993



ORIGINAL STAMP IN GREEN

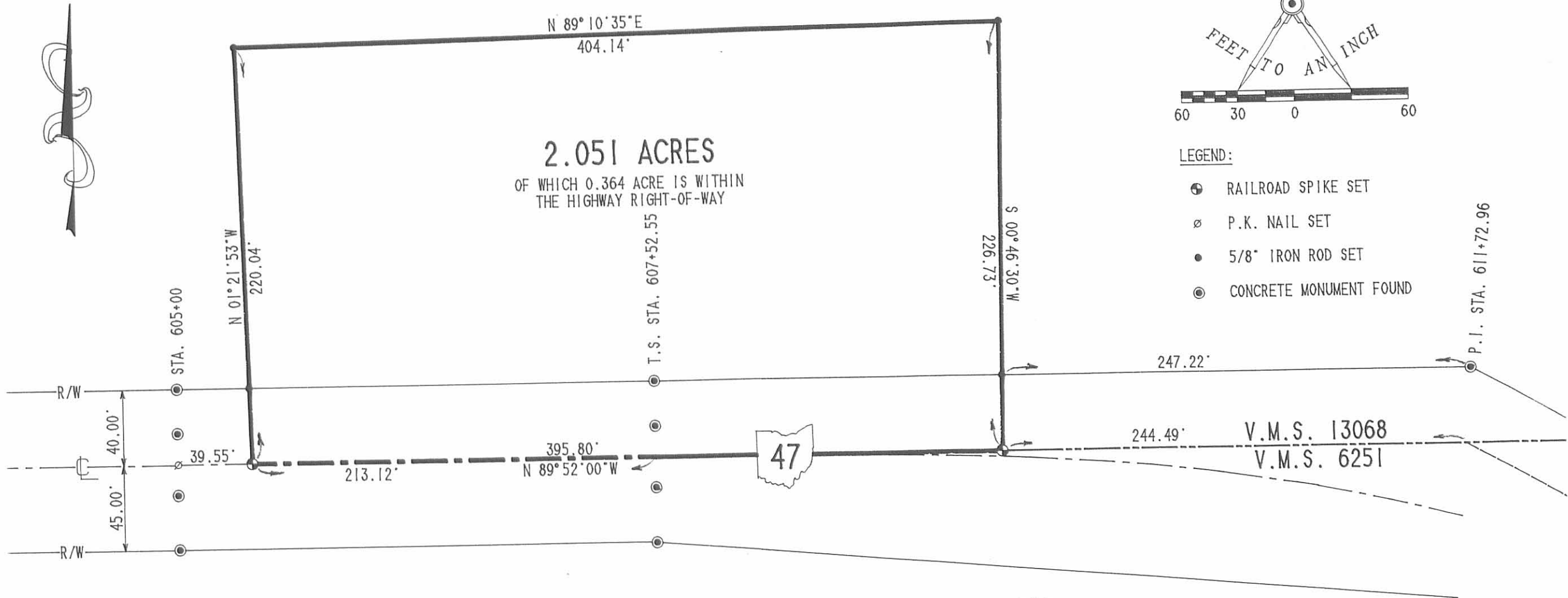
INDEXED ON MAP
8775 1D

RAYMOND P. AND JANET I. LANE
 104.65 ACRES
 VOL. 294. PG. 88 (TRACT 1)



LEGEND:

- ⊕ RAILROAD SPIKE SET
- ⊙ P.K. NAIL SET
- 5/8" IRON ROD SET
- ⊙ CONCRETE MONUMENT FOUND



REFERENCES:

LOGAN COUNTY ENGINEER'S PLAN L-34

SURVEY OF 2.051 ACRES OUT OF THE
 RAYMOND P. AND JANET I. LANE 104.65 ACRE TRACT
 VOLUME 294. PAGE 88 (TRACT 1)
 VIRGINIA MILITARY SURVEY 13068
 BOKESCREEK TOWNSHIP
 LOGAN COUNTY, OHIO

INDEXED ON MAP
 8775 1P



SURVEYED BY:

JEFFREY I. LEE
 PROFESSIONAL SURVEYOR 6359
 FEBRUARY 26, 1993

LEE SURVEYING & MAPPING CO.
 143 East Columbus Avenue
 BELLEFONTAINE, OHIO 43311
 (513) 593-7335

2 WORKING DAYS
BEFORE YOU DIG
 CALL TOLL FREE **800-362-2764**
 OHIO UTILITIES PROTECTION SERVICE.

ORIGINAL STAMP IN GREEN

D 213 RAYLANE L-2068-4

DONALD D. HAYS SURVEY
131.149 ACRES
January 20, 2006

The following described 131.149 acre tract of land is situated in Virginia Military Surveys 6251 and 13068, Bokescreek Township, Logan County, Ohio and being all of Donald D. Hays and Peggy J. Hays, Trustees under the Donald D. Hays Living Trust (1/2 interest) 102.599 acre, Parcel 1 and 28.55 acre, Parcel 2 described in Official Record Volume 808, page 219 and Peggy J. Hays and Donald D. Hays, Trustees under the Peggy J. Hays Living Trust (1/2 interest) 102.599 acre, Parcel 1 and 28.55 acre, Parcel 2 described in Official Record Volume 808, page 221, said 131.149 acre tract more particularly described as follows:

Beginning at a 5/8 inch iron pin found at the southeast corner of said 102.599 acre tract and at the southwest corner of Merle E. and Zella Ann Schrader's 39.35 acre tract described in Official Record Volume 585, page 887, said iron pin being in the east line of V.M.S. 13068, in the west line of V.M.S. 775 - 6155, and in the tangent line of a simple spiral curve having a delta angle of 22°53'13", an average degree of curve of 6°00'00", a spiral length of 350.00 feet, and a spiral tangent length of 369.15 feet, said iron pin also in the road right-of-way of State Route 47 (variable right-of-way width)(Highway Plan L-34);

Thence **North 83°18'28" West 10.28 feet**, departing from the west line of V.M.S. 775 - 6155 and entering V.M.S. 13068, following the south line of said 102.599 acre tract and the tangent line of said simple spiral curve to the right, to an iron pin set in the road right-of-way of State Route 47;

Thence **North 60°25'15" West 936.51 feet**, following the south line of said 102.599 acre tract, the tangent line of said simple spiral curve to the right, the centerline of State Route 47, and the tangent line of a simple spiral curve to the left having a delta angle of 29°26'45", an average degree of curve of 6°00'00", a spiral length of 350.00 feet, and a spiral tangent length of 427.18 feet, leaving V.M.S. 13068 and crossing the northeast corner of V.M.S. 6251, to an iron pin set in the south line of V.M.S. 13068 and in the road right-of-way of State Route 47;

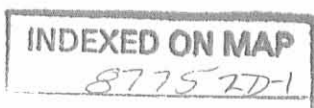
Thence **North 89°52'00" West 244.28 feet**, following the tangent line of said simple spiral curve to the left, the south line of V.M.S. 13068, the north line of V.M.S. 6251, and the south line of said 102.599 acre tract, to a railroad spike found at the southeast corner of Clifford A. Cronkleton, Trustee (1/2 interest) and Rebecca K. Cronkleton, Trustee (1/2 interest) 2.051 acre, Parcel II described in Official Record Volume 344, page 329, said railroad spike also in the road right-of-way of State Route 47;

Thence **North 0°42'54" East 226.70 feet**, departing from the tangent line of said simple spiral curve to the left, the north line of V.M.S. 6251, and the road right-of-way of State Route 47, entering V.M.S. 13068, following the east line of said 2.051 acre tract and the south line of said 102.599 acre tract, passing a 5/8 inch iron pin found at 40.00 feet, to a 5/8 inch iron pin found;

Thence **South 89°09'38" West 404.30 feet**, following the north line of said 2.051 acre tract and the south line of said 102.599 acre tract, to a 5/8 inch iron pin found;

Thence **South 1°23'42" East 220.03 feet**, following the west line of said 2.051 acre tract and the south line of said 102.599 acre tract, passing a 5/8 inch iron pin found at 180.03 feet, to a railroad spike found in the centerline of State Route 47, the north line of V.M.S. 6251, and the south line of V.M.S. 13068;

Thence **North 89°52'00" West 670.41 feet**, following the centerline of State Route 47, the north line of V.M.S. 6251, the south line of V.M.S. 13068, the south line of said 102.599 acre tract, and the south line of said 28.55 acre tract, to a magnetic nail set at the southeast corner of Ernestine D. Bayless' 75.00 acre, Parcel One described in Deed Volume 406, page 462;



Thence **North 0°56'01" West 2433.51 feet**, departing from the centerline of State Route 47 and the north line of V.M.S. 6251, crossing V.M.S. 13068, following the east line of said 75.00 acre tract and the west line of said 28.55 acre tract, passing an iron pin set at 40.01 feet, to an iron pin set in the south line of V.M.S. 7995 and in the south line of Donald D. and Peggy Jo Hays' 1427.109 acre, Tract II described in Official Record Volume 317, page 396;

Thence **North 89°46'38" East 2444.35 feet**, following the north line of V.M.S. 13068, the south line of V.M.S. 7995, the north line of said 28.55 acre tract, the north line of said 102.599 acre tract, and the south line of said 1427.109 acre tract, to a stone found in west line of V.M.S. 6154 and in the west line of Kenneth E. Welty and Timothy D. Welty's original 112.00 acre, Tract II described in Official Record Volume 746, page 882;

Thence **South 7°04'40" West 878.89 feet**, following the east line of V.M.S. 13068, the west line of V.M.S. 6154, the east line of said 102.599 acre tract, and the west line of said original 112.00 acre tract, to an iron pin set at the northwest corner of V.M.S. 775 – 6155;

Thence **South 4°31'06" West 2043.38 feet**, following the east line of V.M.S. 13068, the west line of V.M.S. 775 – 6155, the east line of said 102.599 acre tract, the west line of said original 112.00 acre tract, and the west line of said 39.35 acre tract, passing an iron pin set at 1979.48 feet, to the **place of beginning, containing 131.149 acres**, more or less, and subject to all valid easements and restrictions of record.

Of the above-described 131.149 acre tract of land, 102.693 acres are all of said 102.599 acre, Parcel 1, 28.456 acres are all of said 28.55 acre, Parcel 2, 0.621 acre is within V.M.S. 6251, 130.528 acres are within V.M.S. 13068, and 1.819 acres are within the road right-of-way of State Route 47.

The above description was prepared from an actual field survey made by George A. Blackburn, Registered Surveyor #7873, during the month of January 2006. Iron pins set are 5/8 inch by 30 inch reinforcing rods with plastic caps marked "Blackburn RS #7873." Bearings indicated herein are based on the centerline of State Route 47 (variable right-of-way width) bearing North 89°52'00" West.

Description prepared by: George A. Blackburn 1/20/06
George A. Blackburn, R.S. #7873
12125 Green Street
Middleburg, Ohio 43336
(937) 666-5605

