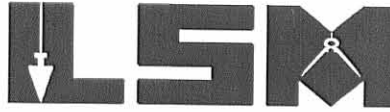


REC'D 2-26-03 SMY OK

Lee Surveying and Mapping Co., Inc.

Land Surveys • Topography • Subdivisions • Construction Layout

117 N. Madriver St.
Bellefontaine OH 43311



Phone: (937) 593-7335
Fax: (937) 593-7444

CRONKLETON 1.058 ACRES

Lying in Virginia Military Survey 6251, Bokescreek Township, Logan County, Ohio.

Being out of the George W. Cronkleton and Bernadine M. Cronkleton, Trustees, 30 acre tract as deeded and described in Official Record 184, Page 310, Exhibit B, Tract IV, of the Logan County Records of Deeds and being more particularly described as follows:

Beginning at a railroad spike found at an angle in the center-line of Ohio Route 47 on P.I. center-line station 585+04.82 (S.H. 236 O.D.O.T. R/W plans dated 1947).

THENCE, with the center-line of Ohio Route 47 (80 feet wide), S 89°-08'-00" W, a distance of 351.49 feet to a railroad spike set at the TRUE POINT OF BEGINNING.

THENCE, S 0°-16'-57" W, a distance of 335.56 feet to a 5/8 inch iron rod set, passing a 5/8 inch iron rod set at 40.01 feet.

THENCE, N 85°-36'-33" W, a distance of 130.63 feet to a 5/8 inch iron rod set.

THENCE, N 3°-08'-28" W, a distance of 323.78 feet to a railroad spike found, passing a 5/8 inch iron rod set at 283.75 feet.

THENCE, with the center-line of Ohio Route 47, N 89°-08'-00" E, a distance of 149.66 feet to the point of beginning.

Containing 1.058 acres, of which 0.136 acre is within the highway right-of-way.

The basis for bearings is the center-line of Ohio Route 47, being N 89°-08'-00" E, and all other bearings are from angles and distances measured in a field survey by Lee Surveying and Mapping Co., Inc. on December 31, 2002

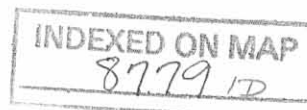
Description prepared by:

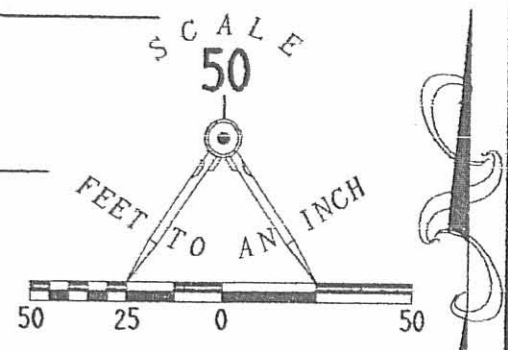
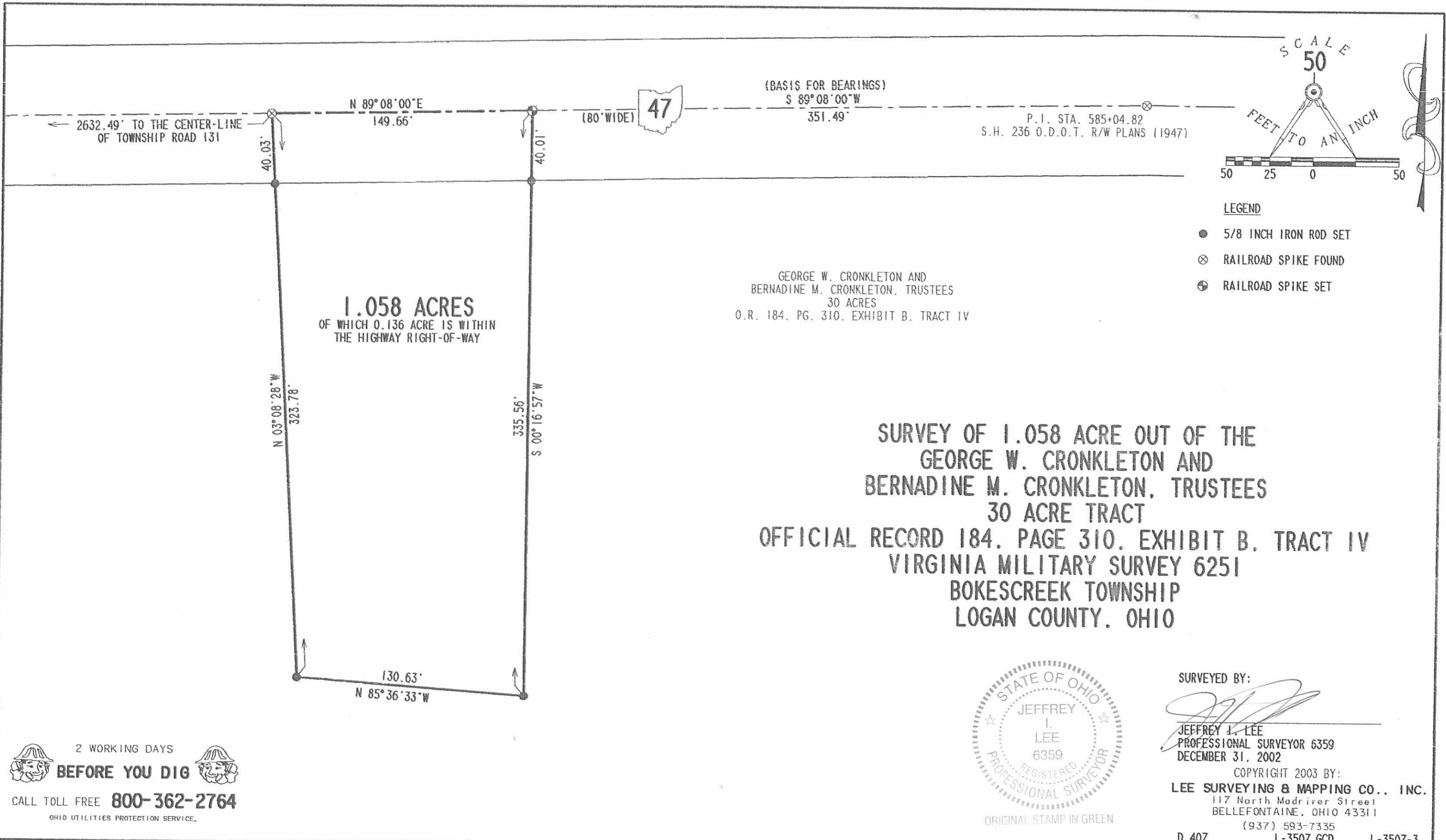


ORIGINAL STAMP IN GREEN

Jeffrey I. Lee
Professional Surveyor 6359
January 16, 2003

L-3507





- LEGEND**
- 5/8 INCH IRON ROD SET
 - ⊗ RAILROAD SPIKE FOUND
 - ⊕ RAILROAD SPIKE SET

GEORGE W. CRONKLETON AND
 BERNADINE M. CRONKLETON, TRUSTEES
 30 ACRES
 O.R. 184, PG. 310, EXHIBIT B, TRACT IV

**SURVEY OF 1.058 ACRE OUT OF THE
 GEORGE W. CRONKLETON AND
 BERNADINE M. CRONKLETON, TRUSTEES
 30 ACRE TRACT
 OFFICIAL RECORD 184, PAGE 310, EXHIBIT B, TRACT IV
 VIRGINIA MILITARY SURVEY 6251
 BOKESCREEK TOWNSHIP
 LOGAN COUNTY, OHIO**



SURVEYED BY:
Jeffrey I. Lee
 JEFFREY I. LEE
 PROFESSIONAL SURVEYOR 6359
 DECEMBER 31, 2002

COPYRIGHT 2003 BY:
LEE SURVEYING & MAPPING CO., INC.
 117 North Madriver Street
 BELLEFONTAINE, OHIO 43311
 (937) 593-7335
 D 407 L-3507.GCD L-3507-3

2 WORKING DAYS
BEFORE YOU DIG
 CALL TOLL FREE **800-362-2764**
 OHIO UTILITIES PROTECTION SERVICE

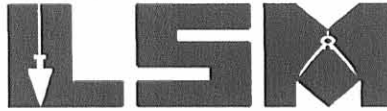
INDEXED ON MAP
 8779 1P

PEZ'D 10-3-06 SMYOK

Lee Surveying and Mapping Co., Inc.

Land Surveys • Topography • Subdivisions • Construction Layout

117 N. Madriver St.
Bellefontaine OH 43311



Phone: (937) 593-7335
Fax: (937) 593-7444

1975-2005 - 30 YEARS OF EXCELLENCE

**CRONKLETON, TRUSTEES
1.513 ACRES**

Lying in Virginia Military Survey 6251, Bokescreek Township, Logan County, Ohio.

Being out of the George W. Cronkleton, Trustee and Bernadine M. Cronkleton, Trustee, original 30 acre tract as deeded and described in Official Record 184, Page 310, Exhibit B, Tract IV of the Logan County Records of Deeds and being more particularly described as follows:

Commencing on a railroad spike found at the angle in the center-line of Ohio Route 47 on P.I. center-line station 585+04.82 (S.H. 236, O.D.O.T. R/W plans dated 1947).

THENCE, with the center-line of Ohio Route 47 (80 feet wide), S 89°-08'-00"W, a distance of 501.15 feet to a railroad spike found at the TRUE POINT OF BEGINNING.

THENCE, with the west line of the Timothy D. Shoffner 1.058 acre tract (O.R. 788, Pg. 276), S 3°-08'-28"E, a distance of 323.78 feet to a 5/8 inch iron rod found, passing a 5/8 inch iron rod found at 40.03 feet.

THENCE, S 72°-13'-22"W, a distance of 201.40 feet to a 5/8 inch iron rod set.

THENCE, N 0°-52'-00"W, a distance of 382.11 feet to a MAG nail set on the center-line of Ohio Route 47, passing a 5/8 inch iron rod set at 342.11 feet.

THENCE, with the center-line of Ohio Route 47, N 89°-08'-00"E, a distance of 179.84 feet to the point of beginning.

Containing 1.513 acres, of which 0.166 acre is within the highway right-of-way.

The basis for bearings is the center-line of Ohio Route 47, being S 89°-08'-00"W, and all other bearings are from angles and distances measured in a field survey by Lee Surveying and Mapping Co., Inc. on October 2, 2006.

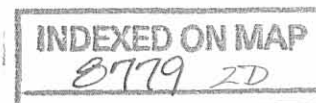


ORIGINAL STAMP IN GREEN

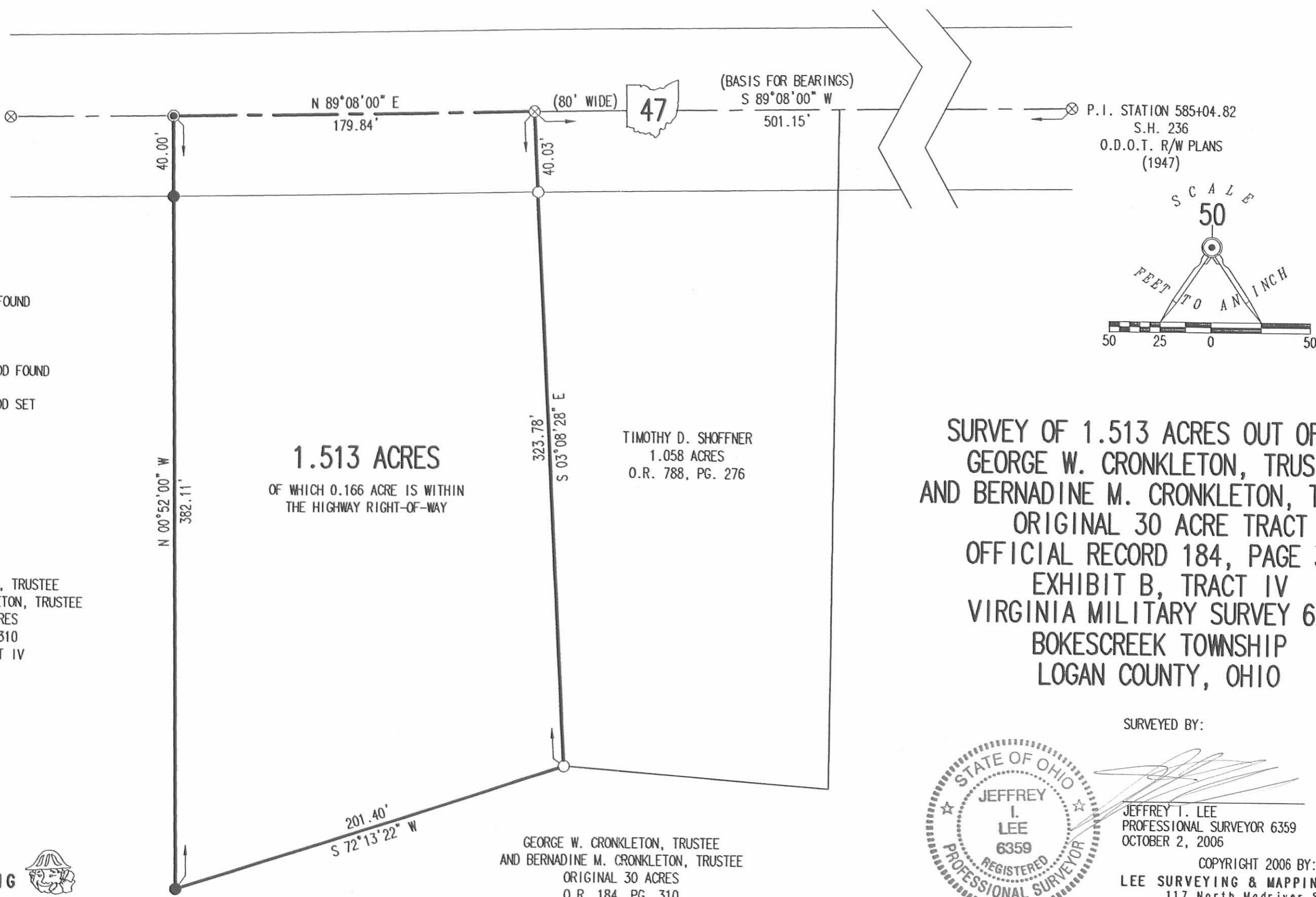
Description prepared by:

Jeffrey I. Lee
Professional Surveyor 6359
October 2, 2006

3507096



REC'D 10-3-06 SWJ/DK



LEGEND:

- ⊗ RAILROAD SPIKE FOUND
- ⊙ MAG NAIL SET
- 5/8 INCH IRON ROD FOUND
- 5/8 INCH IRON ROD SET

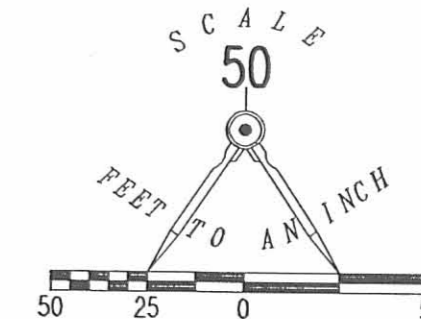
GEORGE W. CRONKLETON, TRUSTEE
 AND BERNADINE M. CRONKLETON, TRUSTEE
 ORIGINAL 30 ACRES
 O.R. 184, PG. 310
 EXHIBIT B, TRACT IV

1.513 ACRES
 OF WHICH 0.166 ACRE IS WITHIN
 THE HIGHWAY RIGHT-OF-WAY

TIMOTHY D. SHOFFNER
 1.058 ACRES
 O.R. 788, PG. 276

GEORGE W. CRONKLETON, TRUSTEE
 AND BERNADINE M. CRONKLETON, TRUSTEE
 ORIGINAL 30 ACRES
 O.R. 184, PG. 310
 EXHIBIT B, TRACT IV

P.I. STATION 585+04.82
 S.H. 236
 O.D.O.T. R/W PLANS
 (1947)



**SURVEY OF 1.513 ACRES OUT OF THE
 GEORGE W. CRONKLETON, TRUSTEE
 AND BERNADINE M. CRONKLETON, TRUSTEE
 ORIGINAL 30 ACRE TRACT
 OFFICIAL RECORD 184, PAGE 310
 EXHIBIT B, TRACT IV
 VIRGINIA MILITARY SURVEY 6251
 BOKESCREEK TOWNSHIP
 LOGAN COUNTY, OHIO**

SURVEYED BY:



Jeffrey I. Lee
 JEFFREY I. LEE
 PROFESSIONAL SURVEYOR 6359
 OCTOBER 2, 2006

COPYRIGHT 2006 BY:
 LEE SURVEYING & MAPPING CO., INC.
 117 North Madriver Street
 BELLEFONTAINE, OHIO 43311
 (937) 593-7335

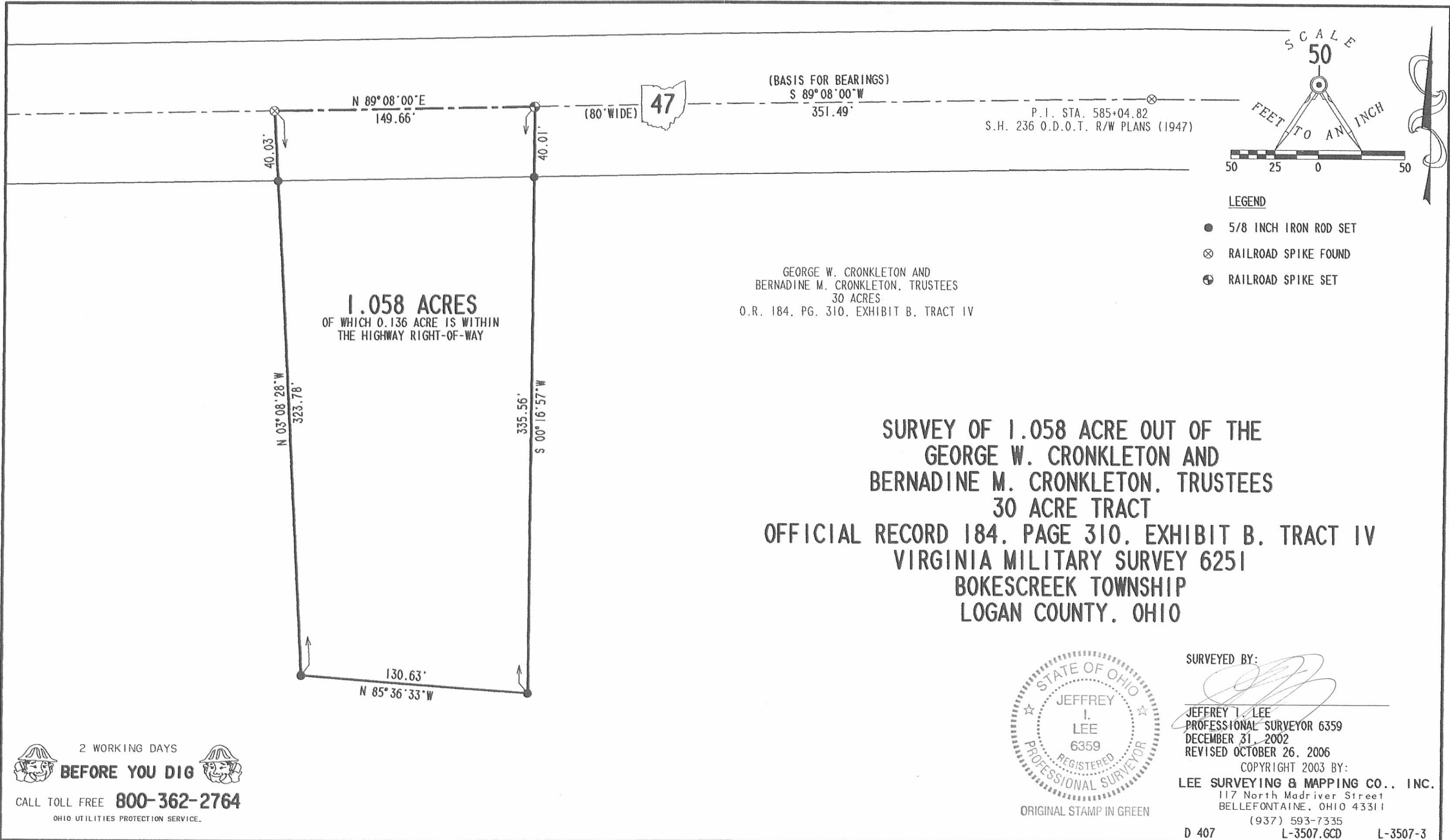
ORIGINAL STAMP IN GREEN

KSR D1006 3507096 L-3507-3

2 WORKING DAYS
BEFORE YOU DIG
 CALL TOLL FREE **800-362-2764**
 OHIO UTILITIES PROTECTION SERVICE

INDEXED ON MAP
 8779 2P.06

RECD 10-27-06 SMM/OK



1.058 ACRES
 OF WHICH 0.136 ACRE IS WITHIN
 THE HIGHWAY RIGHT-OF-WAY

GEORGE W. CRONKLETON AND
 BERNADINE M. CRONKLETON, TRUSTEES
 30 ACRES
 O.R. 184, PG. 310, EXHIBIT B, TRACT IV

**SURVEY OF 1.058 ACRE OUT OF THE
 GEORGE W. CRONKLETON AND
 BERNADINE M. CRONKLETON, TRUSTEES
 30 ACRE TRACT
 OFFICIAL RECORD 184, PAGE 310, EXHIBIT B, TRACT IV
 VIRGINIA MILITARY SURVEY 6251
 BOKESCREEK TOWNSHIP
 LOGAN COUNTY, OHIO**



ORIGINAL STAMP IN GREEN

SURVEYED BY:

 JEFFREY I. LEE
 PROFESSIONAL SURVEYOR 6359
 DECEMBER 31, 2002
 REVISED OCTOBER 26, 2006

COPYRIGHT 2003 BY:
LEE SURVEYING & MAPPING CO., INC.
 117 North Madriver Street
 BELLEFONTAINE, OHIO 43311

(937) 593-7335
 D 407 L-3507.GCD L-3507-3

2 WORKING DAYS
BEFORE YOU DIG
 CALL TOLL FREE **800-362-2764**
 OHIO UTILITIES PROTECTION SERVICE.

INDEXED ON MAP
 8779 3P



Clifford A. Cronkleton
 Page 2 of 3
 May 05, 2022

LEGAL DESCRIPTION

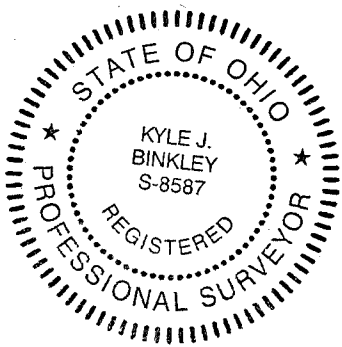
Being a part of a 51.65 acre tract in the name of Clifford A. Cronkleton, Trustee (O.R. 1401, Pg. 3147, Tract Two) and being a part of V.M.S. 6251, Bokescreek Township, Logan County, Ohio, more particularly described as follows:

Commencing at a Mag Spike set at the PI of State Route 47 (variable width) (ODOT R/W Plans S.H. 236, Sta. 585+04.82); thence S 84°-21'-25" E with the centerline of State Route 47, 984.20' to a Mag Nail set at the POINT OF BEGINNING; thence the following courses:

1. Continuing S 84°-21'-25" E with said centerline, 150.00' to a set Mag Nail;
2. S 09°-03'-46" W, 270.87' to a set #5 Rebar, passing a set #5 Rebar at 45.08';
3. N 84°-21'-25" W, 103.58' to a set #5 Rebar;
4. N 00°-44'-31" W, 272.08' to the POINT OF BEGINNING, passing a set #5 Rebar at 226.80'.

The above described parcel contains 0.787 acres, more or less, of which 0.119 acres are occupied by road right-of-way, subject to all legal highways and easements of record.

The system of bearings for this legal description is based on the Ohio State Plane-North Coordinate System NAD83 (2011). This legal description and accompanying plat represent an actual boundary survey completed under the direct supervision of Kyle J. Binkley, P.S. #8587 on May 05, 2022. All markers called for above are in place.





Clifford A. Cronkleton
Page 3 of 3
May 05, 2022

**Ingress/Egress Easement
LEGAL DESCRIPTION**

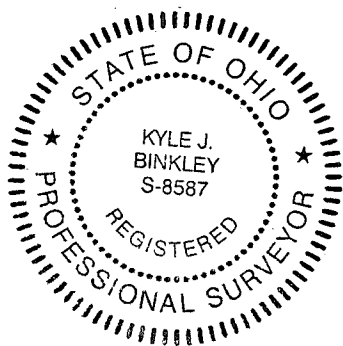
Being a part of a 51.65 acre tract in the name of Clifford A. Cronkleton, Trustee (O.R. 1401, Pg. 3147, Tract Two) and being a part of V.M.S. 6251, Bokescreek Township, Logan County, Ohio, more particularly described as follows:

Commencing at a Mag Spike set at the PI of State Route 47 (variable width) (ODOT R/W Plans S.H. 236, Sta. 585+04.82); thence
S 84°-21'-25" E with the centerline of State Route 47, 1093.47' to a point at the POINT OF BEGINNING; thence the following courses:

1. Continuing S 84°-21'-25" E with said centerline, 40.73' to a set Mag Nail;
2. S 27°-26'-12" W, 69.30' to a point;
3. S 05°-38'-35" W, 206.04' to a point;
4. N 84°-21'-25" W, 15.00' to a point;
5. N 05°-38'-35" E, 270.39' to the POINT OF BEGINNING.

The above description contains 0.112 acres, more or less, and has the sole purpose of creating an ingress/egress easement and is not intended for the transfer of ownership of real estate.

The system of bearings for this legal description is based on the Ohio State Plane-North Coordinate System NAD83 (2011). This legal description and accompanying plat represent an actual boundary survey completed under the direct supervision of Kyle J. Binkley, P.S. #8587 on May 05, 2022. All markers called for above are in place.



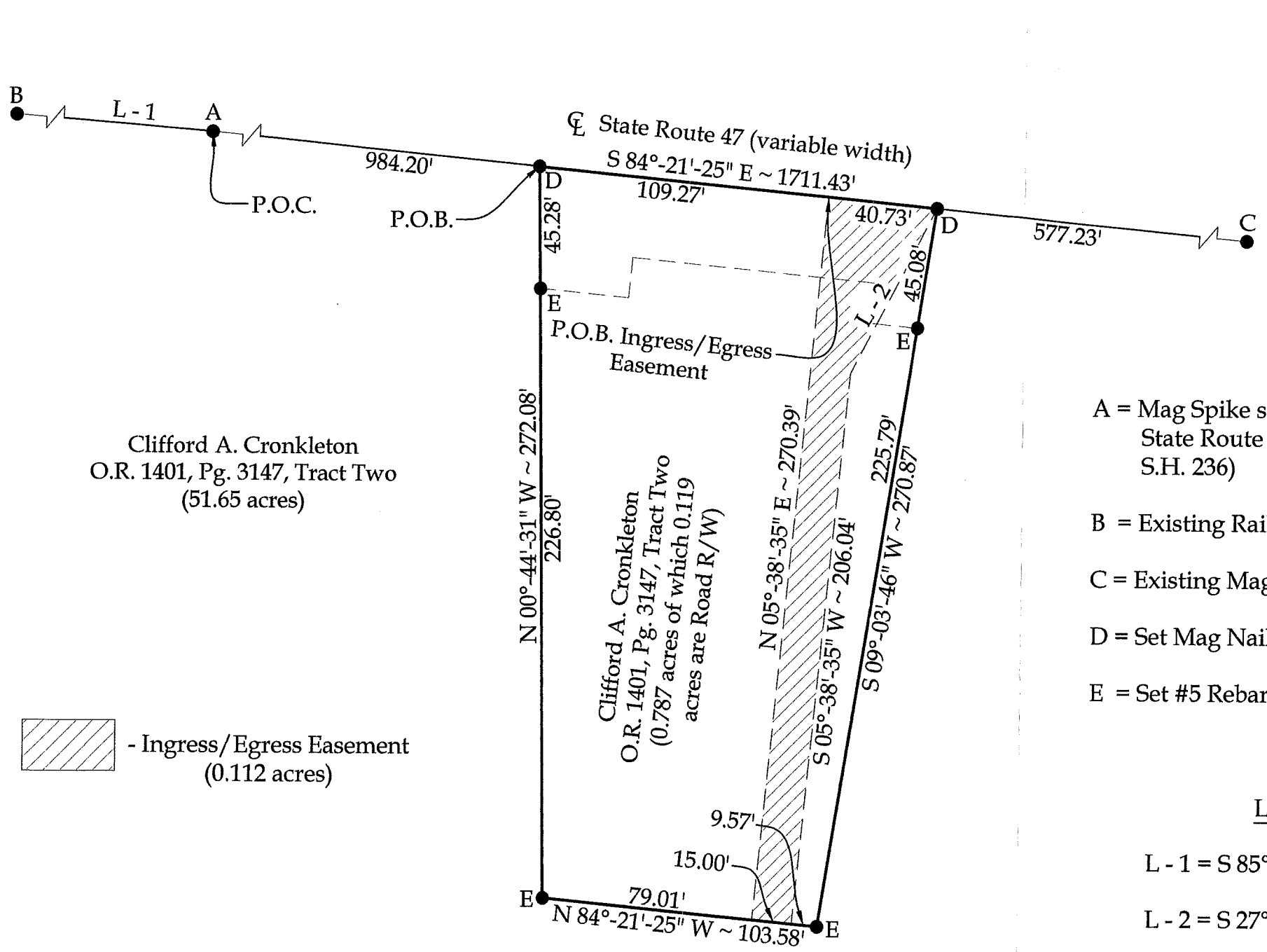
INDEXED ON MAP
B779

5-13-2022

APPROVED

Survey of Parcel #04-069-00-00-027-000 and being a part of the 51.65 acre tract in the name of Clifford A. Cronkleton, Trustee and being located in V.M.S. 6251, Bokescreek Township, Logan County, Ohio.

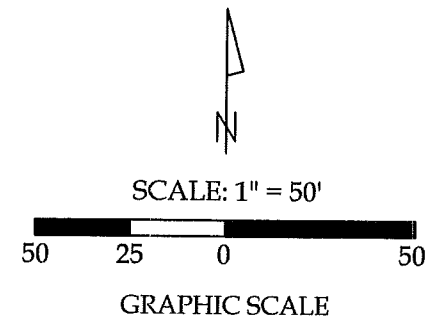
(Prior Deed Referenced in O.R. 1401, Pg. 3147, Tract Two)



Clifford A. Cronkleton
O.R. 1401, Pg. 3147, Tract Two
(51.65 acres)

- Ingress/Egress Easement
(0.112 acres)

Clifford A. Cronkleton
O.R. 1401, Pg. 3147, Tract Two
(0.787 acres of which 0.119
acres are Road R/W)



Legend

- A = Mag Spike set at PI Station 585+04.82
State Route 47 (ODOT R/W Plans
S.H. 236)
- B = Existing Railroad Spike
- C = Existing Mag Nail
- D = Set Mag Nail
- E = Set #5 Rebar



This plat and the accompanying legal descriptions represent an actual boundary survey completed under my direct supervision on May 05, 2022.

Line Data

- L - 1 = S 85°-18'-45" E ~ 351.36'
- L - 2 = S 27°-26'-12" W ~ 69.30'

Surveys Referenced

Survey file numbers 8779 (2P) and 9004 (1P) of the Logan County Tax Map Office as listed on Page 24 of Bokescreek Township.

Kyle J. Binkley, P.S. #8587

Binkley
LAND SURVEYING, LLC
121 W. Auglaize Street
Wapakoneta, Ohio 45895
(419) 236-3768

CLIENT: Clifford Cronkleton			
SURVEYED BY: T.J.S./T.E.W.	DATE: 05-05-2022	DRAWN BY: K.J.B.	CHECKED BY: K.J.B.
SCALE: 1" = 50'	PAGE 1 OF 3 PAGES		

NOTE: All distances on this plat are measured unless otherwise noted.

BASIS OF BEARINGS: The system of bearings for this plat and legal description is based on the Ohio State Plane - North Coordinate System.

INDEXED ON MAP
8779

12-5-2022



APPROVED

Clifford A. Cronkleton
Page 2 of 2
November 04, 2022

LEGAL DESCRIPTION

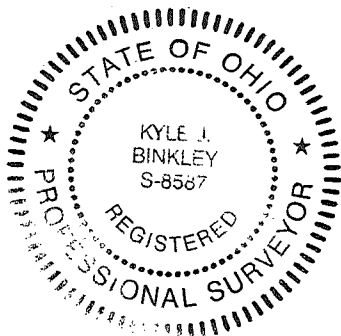
Being a part of a 51.65 acre tract in the name of Clifford A. Cronkleton, Trustee (O.R. 1401, Pg. 3147, Tract Two) and being a part of V.M.S. 6251, Bokescreek Township, Logan County, Ohio, more particularly described as follows:

Commencing at a Mag Spike set at the PI of State Route 47 (variable width) (ODOT R/W Plans S.H. 236, Sta. 585+04.82); thence S 84°-21'-25" E with the centerline of State Route 47, 984.20' to an existing Mag Nail at the POINT OF BEGINNING; thence the following courses:

1. Continuing S 84°-21'-25" E with said centerline, 285.39' to a Mag Nail set at the NE corner of said 51.65 acre tract and the NW corner of a 96.267 acre tract in the name of Carol J. Culp, Trustee (O.R. 526, Pg. 304, Tract II), passing an existing Mag Nail at 150.00';
2. S 05°-38'-49" W with the E line of said 51.65 acre tract and the W line of said 96.267 acre tract, 330.39' to a set #5 Rebar, passing a set #5 Rebar at 45.00';
3. N 84°-21'-25" W, 151.52' to a set #5 Rebar;
4. N 05°-38'-35" E, 60.00' to an existing #5 Rebar;
5. N 84°-21'-25" W, 103.58' to an existing #5 Rebar;
6. N 00°-44'-31" W, 272.08' to the POINT OF BEGINNING, passing an existing #5 Rebar at 226.80'.

The above described parcel contains 1.886 acres, more or less, of which 0.261 acres are occupied by road right-of-way, subject to all legal highways and easements of record.

The system of bearings for this legal description is based on the Ohio State Plane-North Coordinate System NAD83 (2011). This legal description and accompanying plat represent an actual boundary survey completed under the direct supervision of Kyle J. Binkley, P.S. #8587 on November 04, 2022. All markers called for above are in place.

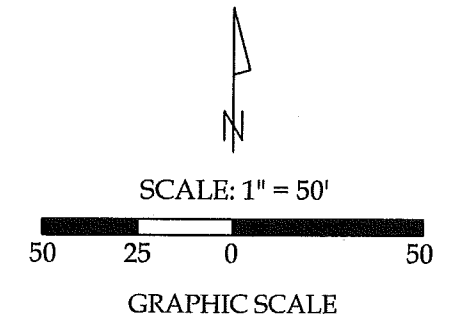
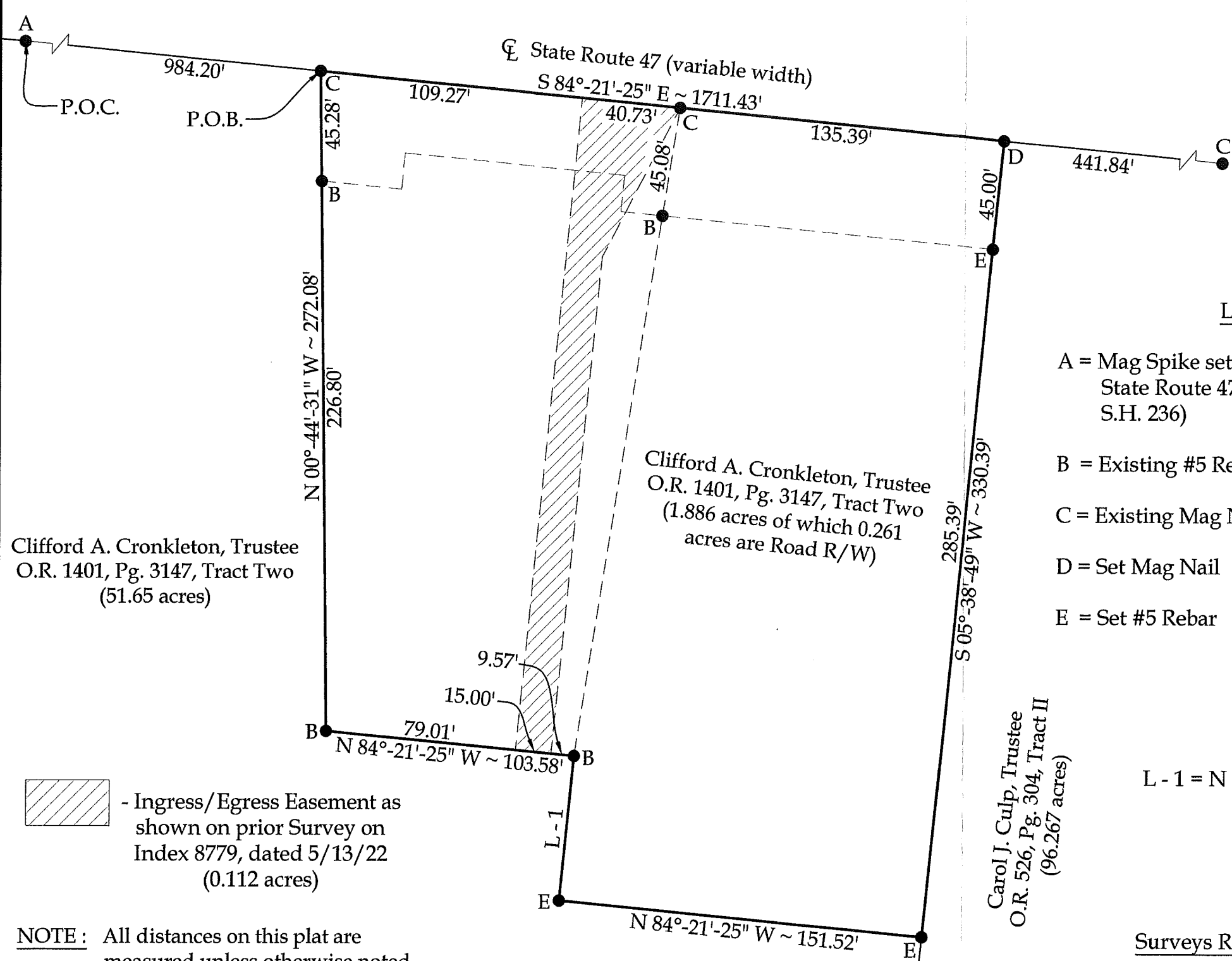


INDEXED ON MAP
879

APPROVED

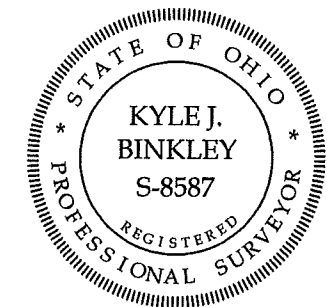
Survey of a part of Parcel #04-069-00-00-027-000 and being a part of the 51.65 acre tract in the name of Clifford A. Cronkleton, Trustee and being located in V.M.S. 6251, Bokescreek Township, Logan County, Ohio.

(Prior Deed Referenced in O.R. 1401, Pg. 3147, Tract Two)



Legend

- A = Mag Spike set at PI Station 585+04.82 State Route 47 (ODOT R/W Plans S.H. 236)
- B = Existing #5 Rebar
- C = Existing Mag Nail
- D = Set Mag Nail
- E = Set #5 Rebar



This plat and the accompanying legal descriptions represent an actual boundary survey completed under my direct supervision on November 04, 2022.

Clifford A. Cronkleton, Trustee
O.R. 1401, Pg. 3147, Tract Two
(51.65 acres)

Clifford A. Cronkleton, Trustee
O.R. 1401, Pg. 3147, Tract Two
(1.886 acres of which 0.261
acres are Road R/W)

Carol J. Culp, Trustee
O.R. 526, Pg. 304, Tract II
(96.267 acres)

Line Data

L - 1 = N 05° 38' 35" E ~ 60.00'

Surveys Referenced

Survey file numbers 8779 (2P) and 9004 (1P) of the Logan County Tax Map Office as listed on Page 24 of Bokescreek Township.

Kyle J. Binkley, P.S. #8587

Binkley
LAND SURVEYING, LLC
121 W. Auglaize Street
Wapakoneta, Ohio 45895
(419) 236-3768

- Ingress/Egress Easement as shown on prior Survey on Index 8779, dated 5/13/22 (0.112 acres)

NOTE: All distances on this plat are measured unless otherwise noted.

BASIS OF BEARINGS: The system of bearings for this plat and legal description is based on the Ohio State Plane - North Coordinate System.

CLIENT: Clifford Cronkleton			
SURVEYED BY: T.J.S./T.E.W.	DATE: 11-04-2022	DRAWN BY: K.J.B.	CHECKED BY: K.J.B.
SCALE: 1" = 50'	PAGE 1	OF 1	PAGES 2

INDEXED ON MAP 8779