

Received 7-22-93



Lee Surveying and Mapping Co.



Farm Surveys • Lot Surveys • Topography • Subdivisions • Construction Layout

143 EAST COLUMBUS AVENUE
BELLEFONTAINE, OHIO 43311

(513) 593-7335

JEFFREY I. LEE, P.S.

TERRILL FARMS, INC. (2.000 ACRES)

Lying in Virginia Military Survey 9937, Bokescreek Township, Logan County, Ohio.

Being out of the Terrill Farms, Inc. 50 acre tract as deeded and described in Official Record 163, Page 373 of the Logan County Records of Deeds and being more particularly described as follows:

Beginning at a railroad spike found on the center-line of County Highway 50 at the northwest corner of the said Terrill Farms, Inc. 50 acre tract.

THENCE, with the center-line of County Highway 50, N 58°-30'-00" E, a distance of 590.41 feet to a railroad spike set at the TRUE POINT OF BEGINNING.

THENCE, with the center-line of County Highway 50, N 58°-30'-00" E, a distance of 234.89 feet to a railroad spike set. Said railroad spike is S 58°-30'-00" W, a distance of 975.11 feet from a stone found at the intersection of center-lines of County Highway 50 and Township Road 267.

THENCE, S 12°-12'-47" E, a distance of 378.10 feet to a 5/8 inch iron rod set.

THENCE, S 58°-30'-00" W, a distance of 253.35 feet to a 5/8 inch iron rod set.

THENCE, N 9°-37'-00" W, a distance of 384.59 feet to the point of beginning.

Containing 2.000 acres of which 0.162 acre is within the highway right-of-way.

The basis for bearings is based upon the center-line of County Highway 50 being N 58°-30'-00" E, and all other bearings are from angles and distances measured in a field survey by Lee Surveying and Mapping Company on July 21, 1993.

Description prepared by:

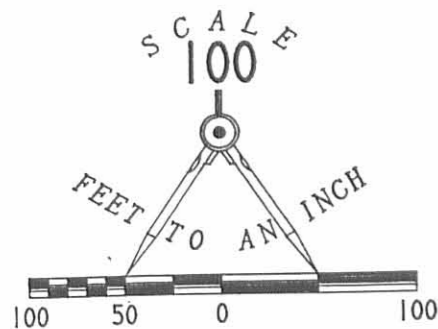
Jeffrey I. Lee
Professional Surveyor 6359
July 22, 1993



L 2107

ORIGINAL STAMP IN GREEN

INDEXED ON MAP
88/4 1D

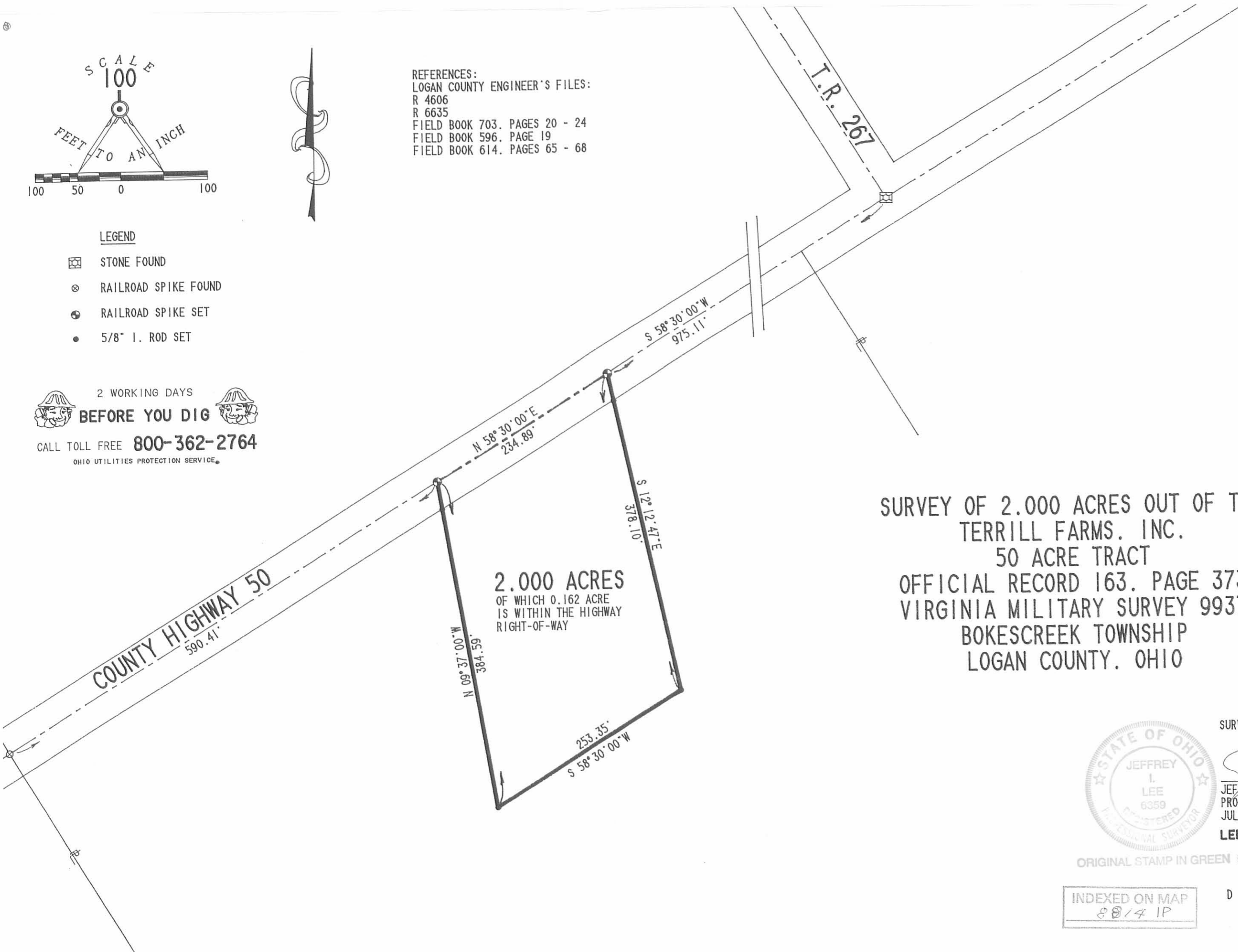


REFERENCES:
 LOGAN COUNTY ENGINEER'S FILES:
 R 4606
 R 6635
 FIELD BOOK 703. PAGES 20 - 24
 FIELD BOOK 596. PAGE 19
 FIELD BOOK 614. PAGES 65 - 68

LEGEND

- ☒ STONE FOUND
- ⊗ RAILROAD SPIKE FOUND
- ⊙ RAILROAD SPIKE SET
- 5/8" I. ROD SET

2 WORKING DAYS
BEFORE YOU DIG
 CALL TOLL FREE **800-362-2764**
 OHIO UTILITIES PROTECTION SERVICE



2.000 ACRES
 OF WHICH 0.162 ACRE
 IS WITHIN THE HIGHWAY
 RIGHT-OF-WAY

**SURVEY OF 2.000 ACRES OUT OF THE
 TERRILL FARMS, INC.
 50 ACRE TRACT
 OFFICIAL RECORD 163, PAGE 373
 VIRGINIA MILITARY SURVEY 9937
 BOKESCREEK TOWNSHIP
 LOGAN COUNTY, OHIO**



SURVEYED BY:
[Signature]
JEFFREY L. LEE
 PROFESSIONAL SURVEYOR 6359
 JULY 21, 1993

LEE SURVEYING & MAPPING CO.
 143 East Columbus Avenue
 BELLEFONTAINE, OHIO 43311
 (513) 593-7335

INDEXED ON MAP
 8814 IP

D 221 DTERRILL L 2107-3