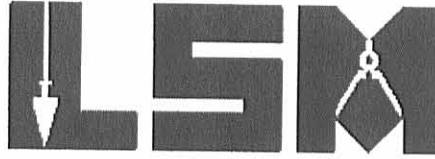


REC'D 10-23-07 SMM/AL

Lee Surveying and Mapping Co., Inc.

Land Surveys • Topography • Subdivisions • Construction Layout

117 N. Madriver St.
Bellefontaine OH 43311



Phone: (937) 593-7335
Fax: (937) 593-7444

DIENST 6.000 ACRES

Lying in Virginia Military Survey 7161, Bokescreek Township, Logan County, Ohio.

Being out of the Barbara E. Tighe 26.7 acre tract as deeded and described in Official Record 128, Page 609 Tract Four of the Logan County Records of Deeds and being more particularly described as follows:

Commencing at a 1/2 inch iron rod found at the intersection of center-lines of County Highway 117 and County Highway 142 (60 feet wide).

THENCE, with the center-line of County Highway 142, S 9°45'-00"E, a distance of 4568.42 feet to a MAG nail set at THE TRUE POINT OF BEGINNING.

THENCE, with center-line of County Highway 142 and said center-line extended, S 9°45'-00"E, a distance of 430.70 feet to a 5/8 inch iron rod set, passing a MAG nail set at 238.70 feet.

THENCE, with the south line of Virginia Military Survey 7161 and the north line of the Ronald Mouser 191.17 acre tract (O.R. 418, Pg. 176, Tract I), S 80°05'-51"W, a distance of 606.83 feet to a 5/8 inch iron rod set, passing a MAG nail set at 12.97 feet and a 5/8 inch iron rod set at 43.27 feet.

THENCE, N 9°45'-00"W, a distance of 430.70 feet to a 5/8 inch iron rod set.

THENCE, N 80°05'-51"E, a distance of 606.83 feet to the point of beginning, passing a 5/8 inch iron rod set at 576.83 feet.

Containing 6.000 acres of which 0.316 acre is within the highway right-of-way.

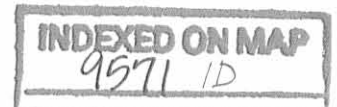
The basis for bearings is the center-line of County Highway 142, being S 9°45'-00"E, and all other bearings are from angles and distances measured in a field survey by Lee Surveying and Mapping Co., Inc. on October 19, 2007.



Description prepared by:

William K. Bruce

William K. Bruce
Professional Surveyor 7437
October 19, 2007



L-4535107

ORIGINAL STAMP IN GREEN

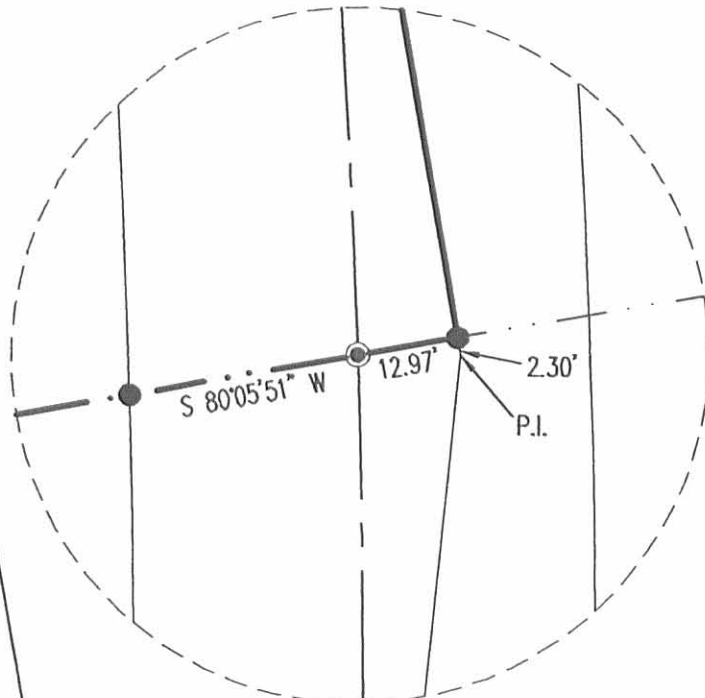
REV'D 10-23-07 smj/ok

2 WORKING DAYS
BEFORE YOU DIG
CALL TOLL FREE **800-362-2764**
OHIO UTILITIES PROTECTION SERVICE

LEGEND

- 5/8 INCH IRON ROD SET
- ⊙ MAG NAIL SET
- 5/8 INCH IRON ROD FOUND
- 1/2 INCH IRON ROD FOUND

DETAIL NOT TO SCALE



S 80°05'51" W
437.01'

REFERENCES:
LOGAN COUNTY ENGINEERS
FIELD BOOK 639, PAGES
57-67.

BARBARA E. TIGHE
26.7 ACRE TRACT
O.R. 128, PG. 609
TRACT FOUR

RONALD MOUSER
191.17 ACRE TRACT
O.R. 418, PG. 176
TRACT I

6.000 ACRES

OF WHICH 0.316 ACRE IS WITHIN THE
HIGHWAY RIGHT-OF-WAY.

COUNTY HIGHWAY 117

COUNTY HIGHWAY 142 (60')

BASIS FOR BEARINGS
S 09°45'00" E
4568.42'

30.00'

N 80°05'51" E
606.83'

P.C.

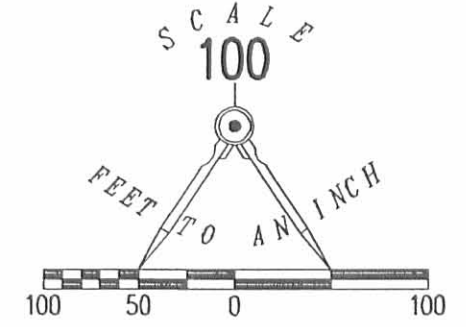
S 09°45'00" E
430.70'

SEE DETAIL

43.27'

P.T.

606.83'
S 80°05'51" W



A SURVEY OF A 6.000 ACRE TRACT
BARBARA E. TIGHE
26.7 ACRE TRACT
OFFICIAL RECORD 128, PAGE 609 TRACT FOUR
VIRGINIA MILITARY SURVEY 7161
BOKESCREEK TOWNSHIP
LOGAN COUNTY, OHIO

VIRGINIA MILITARY SURVEY 7161
VIRGINIA MILITARY SURVEY 12112

SURVEYED BY:

William K. Bruce
WILLIAM K. BRUCE
PROFESSIONAL SURVEYOR 7437
OCTOBER 19, 2007



ORIGINAL STAMP IN GREEN

COPYRIGHT 2007 BY:
LEE SURVEYING & MAPPING CO., INC.
117 North Madriver Street
BELLEFONTAINE, OHIO 43311
(937) 593-7335
surveys@lsminc.us

ADW D1007 4535107 L-4535107-3

INDEXED ON MAP
9571 1P