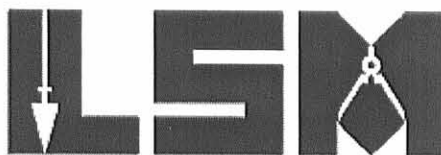


Received 11/1/12 OK gch

Lee Surveying and Mapping Co., Inc.

Land Surveys • Topography • Subdivisions • Construction Layout

117 N. Madriver St.
Bellefontaine OH 43311



Phone: (937) 593-7335
Fax: (937) 593-7444
surveys@lsminc.us

TERRILL, GREENE AND ANDERSON 2.000 ACRES

Lying in Virginia Military Survey 9912, Bokescreek Township, Logan County, Ohio.

Being out of the Nancy M. Terrill, Linda K. Greene and David L. Anderson 58.42 acre tract as deeded and described in Official record 886, Page 164, Tract I of the Logan County Records of Deeds and being more particularly described as follows:

Commencing on a PK nail found on the intersection of the center-lines of Ohio Route 292 and County Highway 20.

THENCE, with the center-line of County Highway 20 (60 feet wide), S 82°-30'-00"W, a distance of 1098.88 feet to a MAG nail set at the TRUE POINT OF BEGINNING.

THENCE, with the center-line of County Highway 20, S 82°-30'-00"W, a distance of 207.06 feet to a MAG nail set.

THENCE, N 05°-58'-17"W, a distance of 420.90 feet to a 5/8 inch iron rod set, passing a 5/8 inch iron rod set at 30.01 feet.

THENCE, N 82°-30'-00"E, a distance of 207.06 feet to a 5/8 inch iron rod set.

THENCE, S 05°-58'-17"E, a distance of 420.90 feet to the point of beginning, passing a 5/8 inch iron rod set at 390.89 feet.

Containing 2.000 acres, of which 0.143 acre is within the highway right-of-way.

Property is subject to any and all previous easements and rights-of-way of record.

The basis for bearings is the center-line of County Highway 20, being S 82°-30'-00"W, and all other bearings are from angles and distances measured in a field survey by Lee Surveying and Mapping Co., Inc. on October 24, 2012.



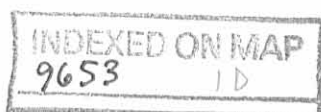
Description prepared by:

William K. Bruce
Professional Surveyor 7437
October 24, 2012

54171012

APPROVED

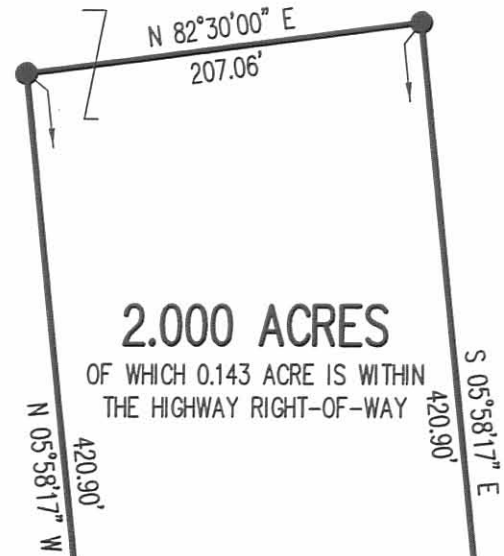
11/1/12



✓ **APPROVED**

11/1/12

NANCY M. TERRILL, LINDA K. GREENE
AND DAVID L. ANDERSON
58.42 ACRES
O.R. 886, PG. 164
TRACT I



2.000 ACRES

OF WHICH 0.143 ACRE IS WITHIN
THE HIGHWAY RIGHT-OF-WAY

N 05°58'17\"

420.90'

N 82°30'00\"

207.06'

S 05°58'17\"

420.90'

30.01'

S 82°30'00\"

207.06'

S 82°30'00\"

923.31'

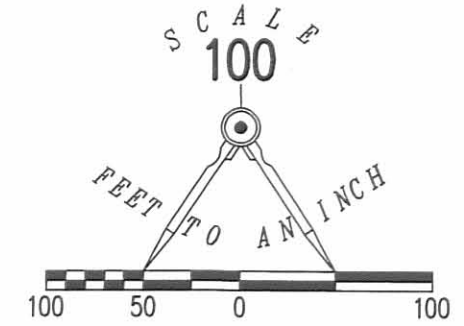
COUNTY HIGHWAY 20 (60')

1098.88
S 82°30'00\"

(BASIS FOR BEARINGS)

LEGEND:

- ⊗ PK NAIL FOUND
- MAG NAIL SET
- ⊙ 3/8 INCH IRON BAR FOUND
- 5/8 INCH IRON ROD SET WITH PLASTIC I.D. CAP STAMPED "LSM 7437"



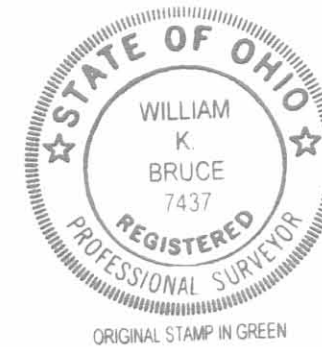
292

**SURVEY OF 2.000 ACRES OUT OF THE
NANCY M. TERRILL, LINDA K. GREENE
AND DAVID L. ANDERSON
58.42 ACRE TRACT
OFFICIAL RECORD 886, PAGE 164
VIRGINIA MILITARY SURVEY 9912
BOKESCREEK TOWNSHIP
LOGAN COUNTY, OHIO**

SURVEYED BY:

William K. Bruce

WILLIAM K. BRUCE
PROFESSIONAL SURVEYOR 7437
OCTOBER 24, 2012



COPYRIGHT 2012 BY:
LEE SURVEYING & MAPPING CO., INC.
117 North Madriver Street
BELLEFONTAINE, OHIO 43311
(937) 593-7335
WWW.LSMINC.US
surveys@lsminc.us

KSS D1012 54171012 L-5417-3

2 WORKING DAYS
BEFORE YOU DIG
CALL TOLL FREE **800-362-2764**
OHIO UTILITIES PROTECTION SERVICE.

INDEXED ON MAP
9653 1P