

# Survey for Degraff School Board

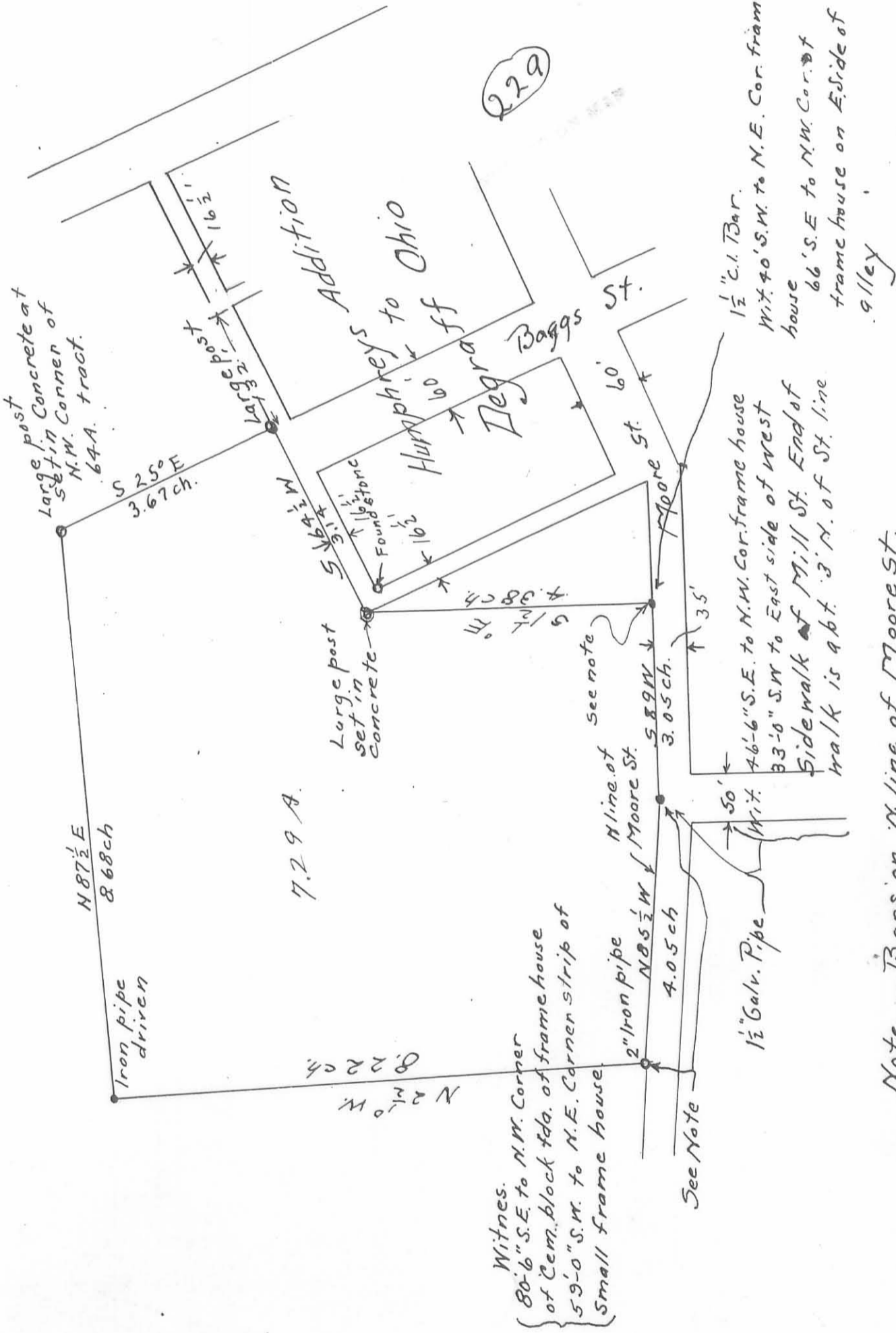
July 16 1920

By O.C. Richey Co. Surveyor.

by E.H. Newell

Sec 7 T2 R14 of Miami Tp.

Deputy.

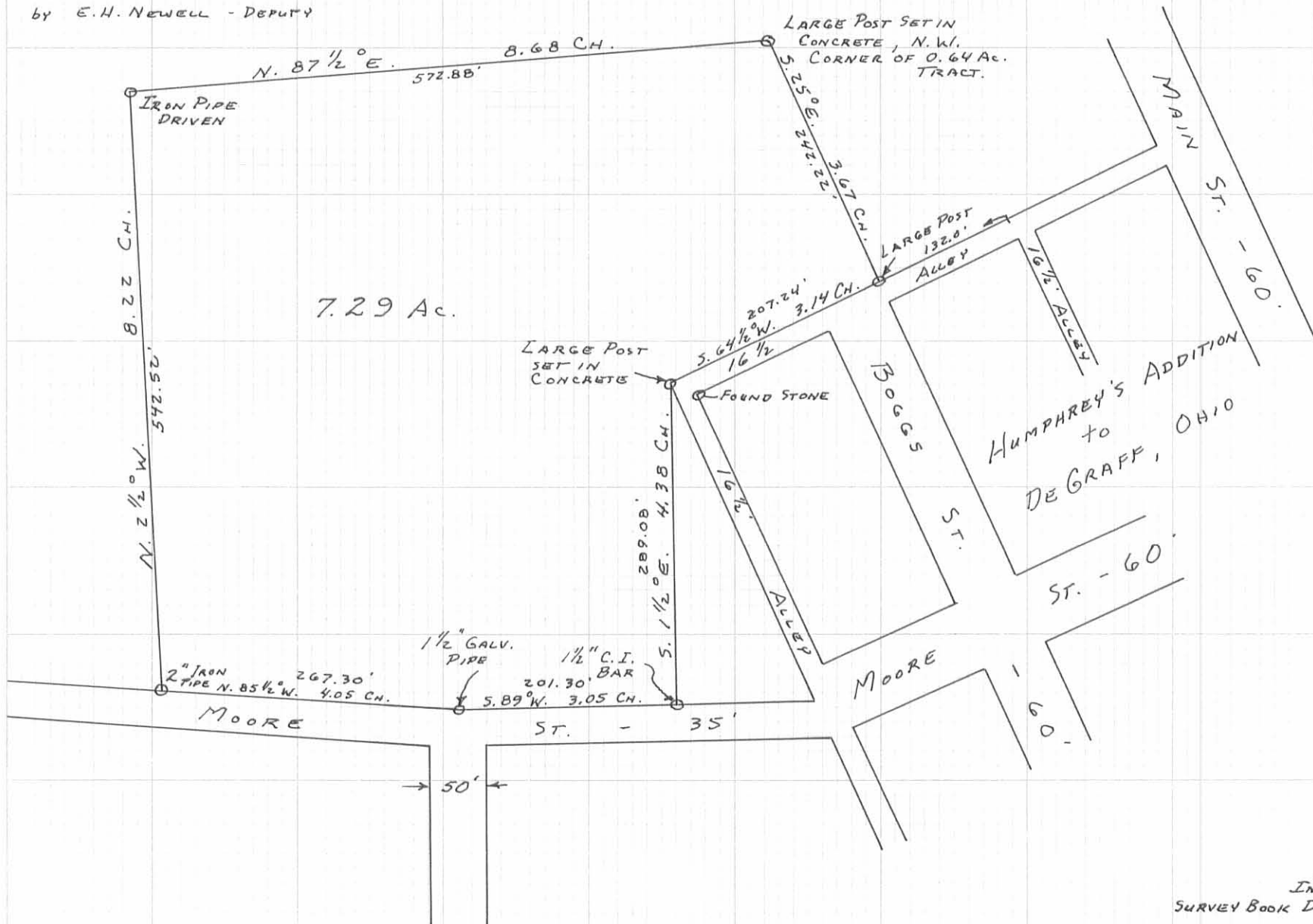


Note. — Bars on N. line of Moore St. Located by measuring thru. from Miami St. the distances called for in plots recorded. Centre of Miami St. Taken as Centre Sidewalks.

SURVEY FOR DE GRAFF SCHOOL BOARD  
 SECTION 7 T. 2 R. 14  
 MIAMI TOWNSHIP  
 LOGAN COUNTY, OHIO  
 SCALE: 1" = 2 CH.

JULY 16, 1920

BY O. C. RICHEY - COUNTY SURVEYOR  
 BY E. H. NEWELL - DEPUTY



229 IP

INDEXED ON MAP.  
 SURVEY BOOK D. PAGE 70

ALUMINUM GUIDE LINE 10 5541 FOR REPRODUCIBLE 10 X 10 TO THE INCH