

REC'D 5-15-03 SMY/OL

Lee Surveying and Mapping Co., Inc.

Land Surveys • Topography • Subdivisions • Construction Layout

117 N. Madriver St.
Bellefontaine OH 43311



Phone: (937) 593-7335
Fax: (937) 593-7444

SCHLUMBOHM 0.042 ACRES

Lying in Sections 5 and 6, Town 3, Range 13, Miami Township, Logan County, Ohio.

Being out of the Stephen R. Schlumbohm and Christine E. Schlumbohm, Trustees, original 61.465 acre tract as deeded and described in Official Record 396, Page 445 of the Logan County Records of Deeds and being more particularly described as follows:

Beginning at a railroad spike found at the intersection of the center-line of Township Road 30 and a easterly corner in the Village of Degraff Corporation Line.

THENCE, with the east line of the Gary L. Smith 0.67 acre tract (O.R. 285, Pg. 27), N 19°-27'-00"W, a distance of 217.60 feet to a 5/8 inch iron rod found, passing a 5/8 inch iron rod found at 21.49 feet.

THENCE, S 23°-42'-33"E, a distance of 224.93 feet to a MAG nail set, passing a 5/8 inch iron rod set at 202.65 feet

THENCE, with the center-line of Township Road 30 (40 feet wide), N 87°-34'-58"W, a distance of 18.00 feet to the point of beginning.

Containing 0.042 acre, of which 0.008 acre is within highway right-of-way, 0.030 acre is in Section 6, and 0.012 acre is in Section 5..

The basis for bearings is the east corporation line , being N 19°-27'-00"W, and all other bearings are from angles and distances measured in a field survey by Lee Surveying and Mapping Co., Inc. on May 1, 2003.

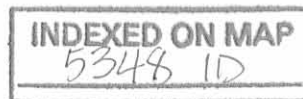
Description prepared by:



ORIGINAL STAMP IN GREEN

Jeffrey I. Lee
Professional Surveyor 6359
May 13, 2003

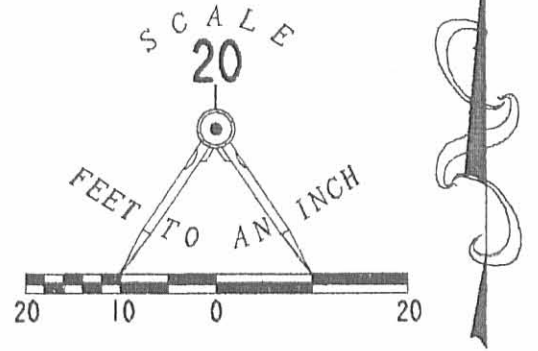
L-3569



VILLAGE OF DEGRAFF CORP. LINE

LEGEND

- 5/8 INCH IRON ROD SET
- ⊗ RAILROAD SPIKE FOUND
- 5/8 INCH IRON ROD FOUND
- ⊗ MAG NAIL FOUND
- MAG NAIL SET



0.042 ACRE
OF WHICH 0.008 ACRE IS WITHIN
THE HIGHWAY RIGHT-OF-WAY
0.030 ACRE IN SECTION 6
0.012 ACRE IN SECTION 5

SURVEY OF
0.042 ACRE OUT OF THE
STEPHEN R. SCHLUMBOHM AND
CHRISTINE E. SCHLUMBOHM, TRUSTEES
ORIGINAL 61.465 ACRE TRACT
OFFICIAL RECORD 396, PAGE 445
SECTIONS 5 AND 6, TOWN 3, RANGE 13
MIAMI TOWNSHIP
LOGAN COUNTY, OHIO

GARY L. SMITH
0.67 ACRE
O.R. 285, PG. 27

(BASIS FOR BEARINGS)
N 19° 27' 00" W
217.60'

S 23° 42' 33" E
224.93'

STEPHEN R. SCHLUMBOHM
AND CHRISTINE E. SCHLUMBOHM, TRUSTEES
ORIGINAL 61.465 ACRE TRACT
O.R. 396, PG. 445

SECTION 6
SECTION 5

0.030 ACRE
0.012 ACRE

21.49'

22.28'

VILLAGE OF DEGRAFF CORP. LINE

TOWNSHIP ROAD 30 (40')

SURVEYED BY:

Jeffrey I. Lee
JEFFREY I. LEE
PROFESSIONAL SURVEYOR 6359
MAY 1, 2003



COPYRIGHT 2003 BY:
LEE SURVEYING & MAPPING CO., INC.
117 North Madriver Street
BELLEFONTAINE, OHIO 43311
(937) 593-7335

2 WORKING DAYS
BEFORE YOU DIG
CALL TOLL FREE **800-362-2764**
OHIO UTILITIES PROTECTION SERVICE.

INDEXED ON MAP
5348 1P ORIGINAL STAMP IN GREEN

M^cIntosh to Snow Survey Description
June, 1973

Being situated in the Village of DeGraff, Miami Township, Logan County, Ohio; and being a part of Section 6, Town 3, Range 13.

Beginning at a point where the south line of Section 6 intersects with the centerline of State Route 508. (Said beginning point bears N 19° - 27'W 38.3 feet from a iron at the intersection of Township Road 30 with State Route 508.)

Thence with the center of State Route 508 N 19° - 27'W 118.4 feet to the true place of beginning for this description.

Thence continuing N 19° - 27'W 900.0 feet to a iron.

Thence with the south line of a 0.53 acre tract N 70° - 33'E 155.0 feet to a iron in the East Corporation Line of DeGraff, passing thru a iron at 30.0 feet.

Thence with said East Corporation Line S 19° - 27'E 900.0 feet to a iron.

Thence S 70° - 33'W 155.0 feet to a iron, passing thru a iron at 125.0 feet.

Containing 3.20 acres more or less.

Owen K. Shirk
Surveyor 4271

INDEXED ON MAP
5348 2D-1

M^oIntosh (keep) Description
June, 1973

Being situated in the Village of DeGraff, Miami Township, Logan County, Ohio; and being a part of Section 5, Town 3, Range 13 and Section 6, Town 33, Range 13.

Beginning at a iron at the intersection of the centerlines of State Route 508 and Township Road 30.

Thence with the center of State Route 508 N 19^o - 27'W 156.7 feet, passing thru the line between Section 5 and Section 6 at 38.3 feet.

Thence N 70^o - 33'E 155.0 feet to a iron in the East Corporation line of DeGraff, passing thru a iron at 30.0 feet.

Thence with said East Corporation Line S 19^o - 27'E 217.6 feet to a iron in the center of Township Road 30, passing thru the line between Section 5 and Section 6 at 185.4 feet.

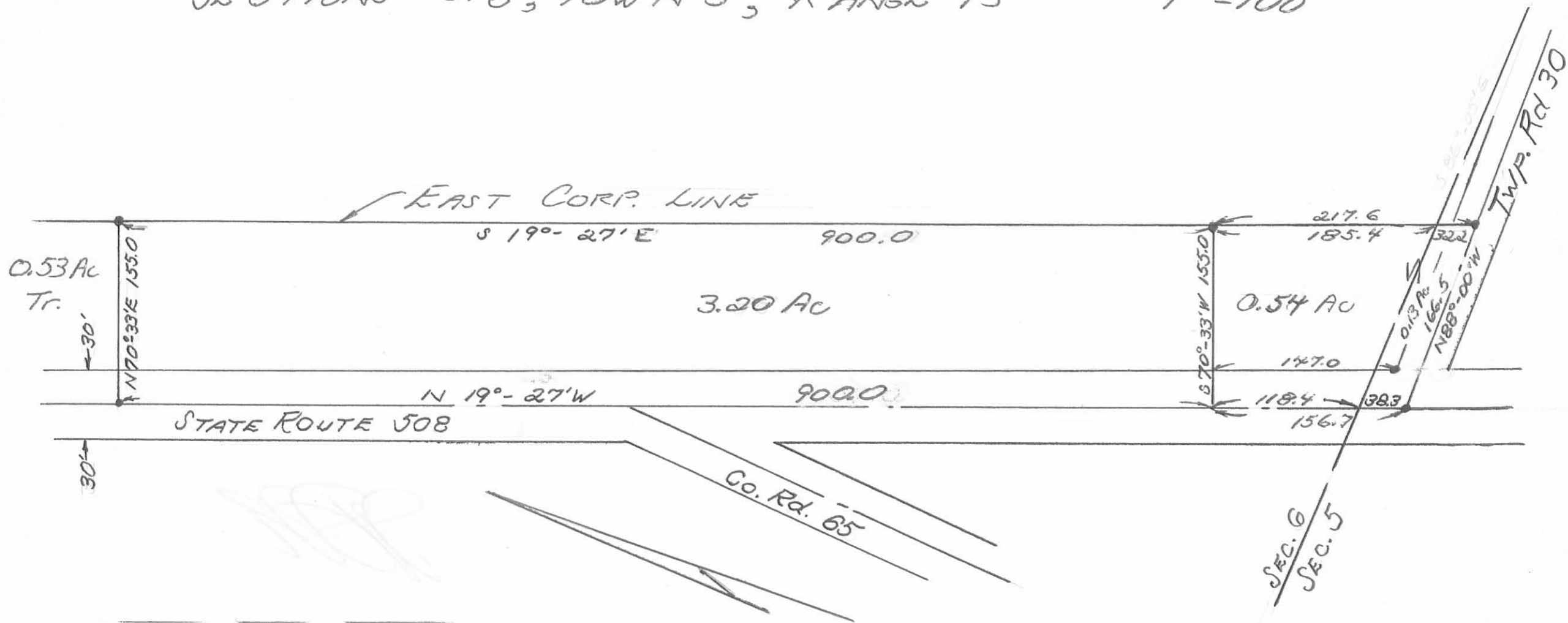
T Thence with the center of Township Road 30 N 88^o - 00'W 166.5 feet to the place of beginning.

Containing 0.67 of an acre more or less of which 0.13 of an acre is in Section 5 and 0.54 of an acre is in Section 6.

Owen K. Shirk
Surveyor 4271



McINTOSH TO SNOW SURVEY - DEGRAFF
 MIAMI TOWNSHIP, LOGAN COUNTY, OHIO
 SECTIONS 5 & 6, TOWN 3, RANGE 13 - 1" = 100'



Owen K. Shirk
 Surveyor 4271
 June, 1973

TWP. RD. 30

INDEXED ON MAP
 5348 2P