

Smith Description  
December, 1975

Being situated in the Village of DeGraff, and in Miami Township,  
Logan County, Ohio; and being a part of Section 6, Town 3, Range 13.

Beginning at the point of intersection of the centerline of  
State Route 508 with the west line of Section 6.

Thence with the west line of Section 6 S  $5^{\circ}$ -18' W 446.4 feet  
to an iron.

Thence N  $52^{\circ}$ -40' E 302.5 feet to the center of State Route 508,  
passing thru an iron at 272.5 feet.

Thence with the center of State Route 508 N  $37^{\circ}$ -20' W 328.3  
feet to the place of beginning.

Containing 1.06 acres in the corporation of DeGraff and 0.06  
of an acre outside the Corporation for a total of 1.14 acres more  
or less. The Auditor carries this as 0.95 of an acre in the  
Corporation of DeGraff and 1.13 acres outside the Corporation.

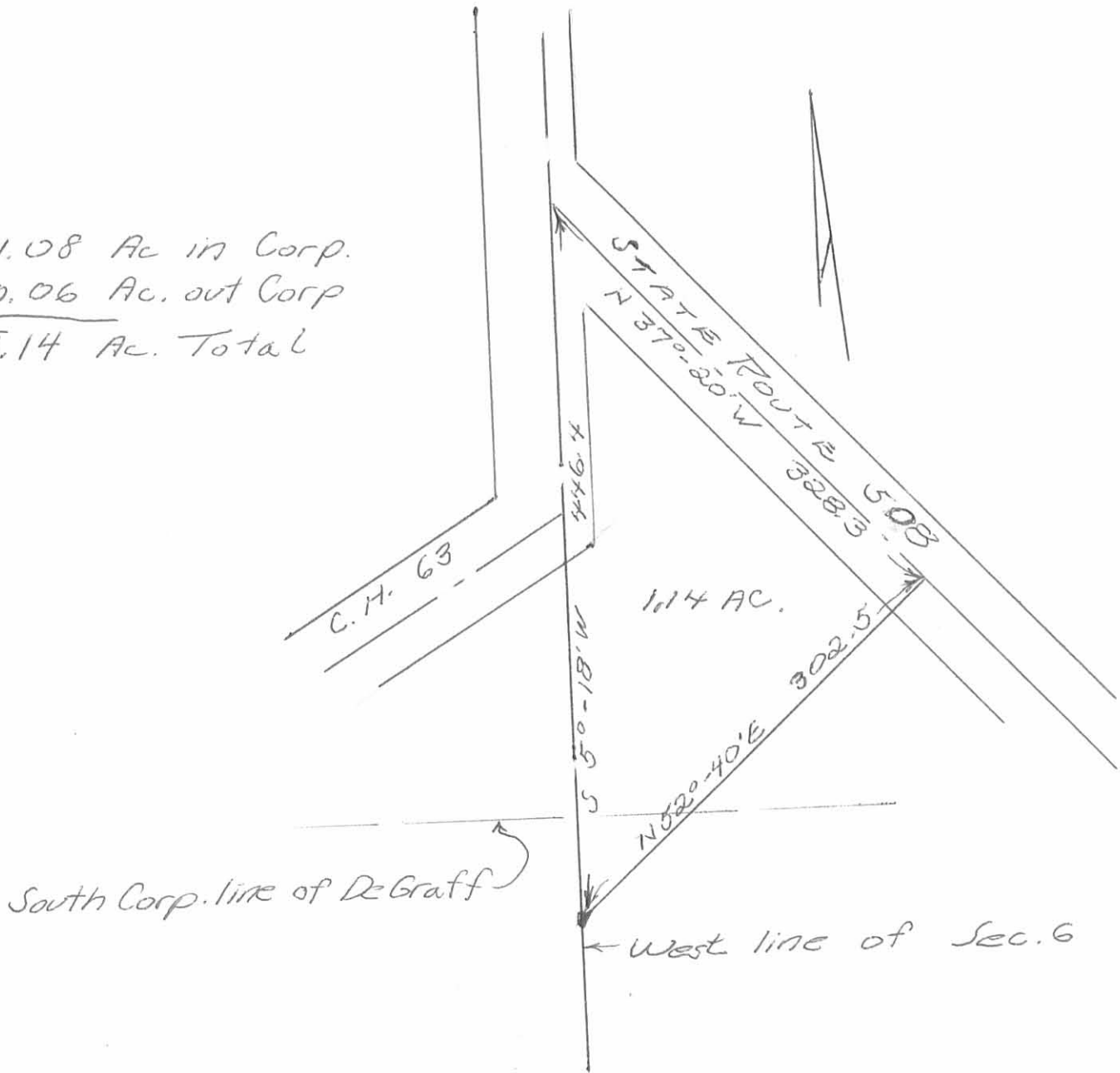
---

Owen K. Shirik  
Surveyor 4271

INDEXED ON MAP  
5847 1D

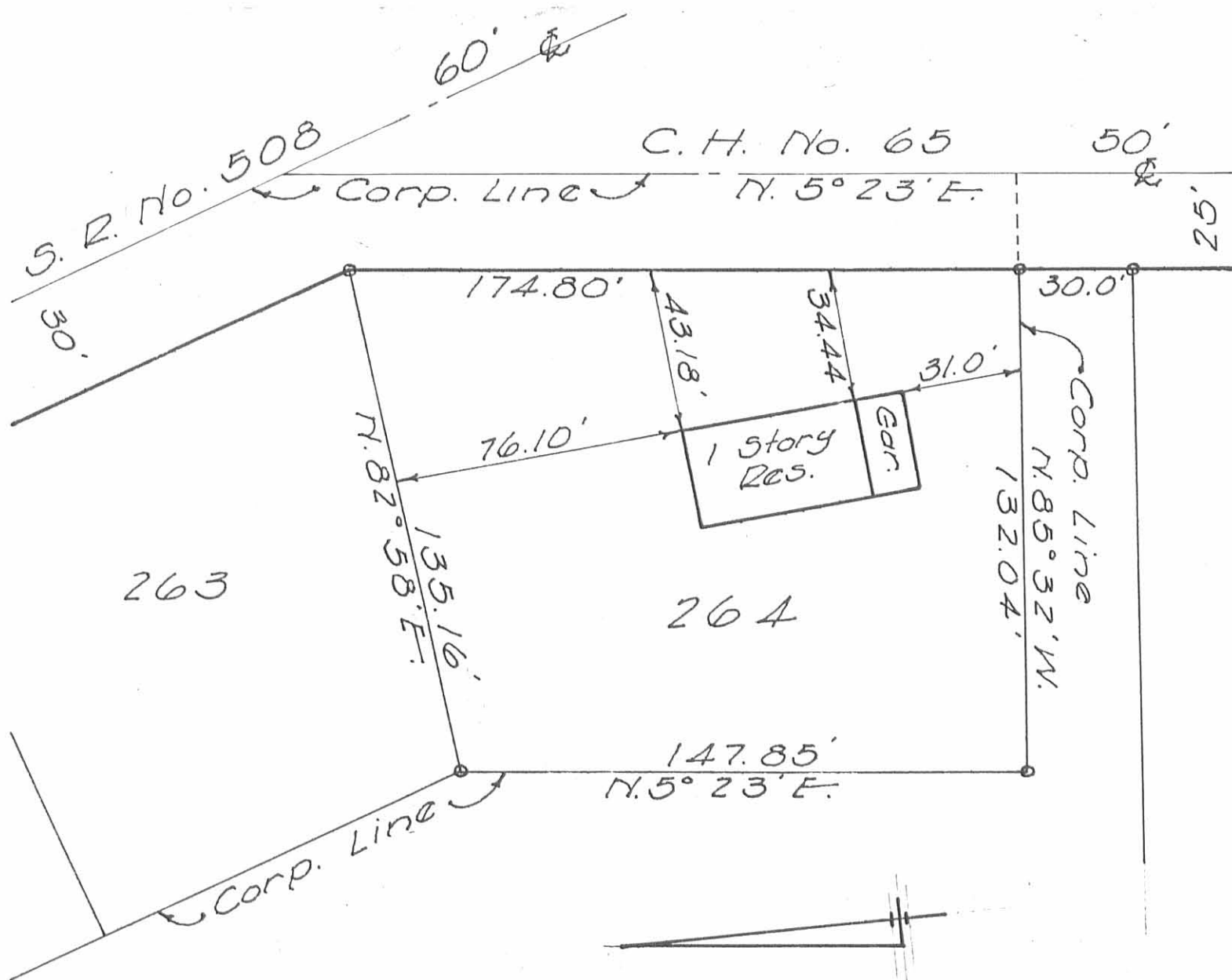
SMITH SURVEY - DE GRAFF  
 MIAMI TWP., LOGAN CO., OHIO  
 SEC. 6, T-3, R-13 - 1" = 100'

1.08 Ac in Corp.  
 0.06 Ac. out Corp  
1.14 Ac. Total



Owen K. Shirk  
 Surveyor 4271  
 Dec., 1975

5847 1P



SURVEY OF LOT No. 264  
 VILLAGE OF DEGRAFF  
 MIAMI TOWNSHIP  
 LOGAN COUNTY, OHIO  
 APRIL 1, 1967  
 SCALE 1"=40'

○ = PIPE FOUND

I hereby certify that this plat is a correct representation of a survey made by me and that the same shows the improvements as located on the premises.

The improvements are entirely within the property lines and there are no encroachments on the premises by improvements on the adjoining premises.

*Dan L. Dodson*

Dan L. Dodson  
 Reg. Surveyor 4270  
 Bellefontaine, Ohio

INDEXED ON MAP  
 5847 2P