

Received 1-13-92

OK 1-14-92 C.R.



Lee Surveying and Mapping Co.



Farm Surveys • Lot Surveys • Topography • Subdivisions • Construction Layout

143 EAST COLUMBUS AVENUE
BELLEFONTAINE, OHIO 43311

(513) 593-7335

JEFFREY I. LEE, P.S.

ORSBORNE (3.355 ACRES)

Lying in Section 12, Town 3, Range 13, Village of DeGraff, Miami Township, Logan County, Ohio.

Being out of the Virgil Orsborne 5.935 acre tract as deeded and described in Official Record 8, Page 271 of the Logan County Records of Deeds and being more particularly described as follows:

Beginning at a 1-1/2 inch pipe found on the center-line of Mill Street, (Township Road 256) S 9°-30'-00" E, a distance of 65.78 feet from a 3/4 inch iron rod found at an angle in Mill Street at center-line station 17+00 (Logan County Engineer's Field Book 490, Page 76).

THENCE, with the southeasterly line of the Allison Trust 0.55 acre tract (O.R. 118, Pg. 545) and the Allison Trust 0.52 acre tract (O.R. 118, Pg. 544) the following two courses:

N 59°-14'-00" E, a distance of 266.20 feet to a wood fence post found.

N 18°-33'-40" W, a distance of 84.79 feet to a 3/4 inch iron rod found.

THENCE, with the southeasterly line of the Janet Hoylman 5.00 acre tract (O.R. 39, Pg. 105), N 63°-21'-49" E, a distance of 501.73 feet to a 3/4 inch iron rod found.

THENCE, with the west line of the Charles Stevens 9.859 acre tract, (O.R. 93, PG. 385), S 10°-53'-54" E, a distance of 370.14 feet to a 5/8 inch iron rod found.

THENCE, with the northwesterly line of the Merle Orsborne 5.935 acre tract (O.R. 8, Pg. 275), S 60°-37'-18" W, a distance of 328.64 feet to a 5/8 inch iron rod set.

THENCE, N 13°-26'-16" W, a distance of 275.93 feet to a 5/8 inch iron rod set.

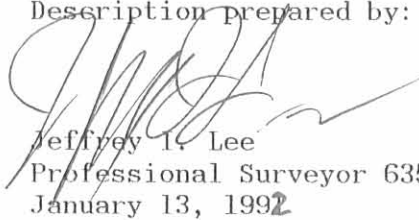
THENCE, S 59°-14'-00" W, a distance of 424.08 feet to a railroad spike set in the center-line of Mill Street.

THENCE, with the center-line of Mill Street, N 9°-30'-00" W, a distance of 32.19 feet to the point of beginning.

Containing 3.355 acres of which 0.022 acre is within the right-of-way of Mill Street.

The basis for bearings is based upon the center-line of Mill Street being N 9°-30'-00" W, and all other bearings are from angles and distances measured in a field survey by Lee Surveying and Mapping Company on December 31, 1991.

Description prepared by:


Jeffrey I. Lee
Professional Surveyor 6359
January 13, 1992



L 1309

ORIGINAL SET IN GREEN

INDEXED ON MAP
73991D

P.I. STA. 17+00
LOGAN COUNTY ENGR.
F.B. 490 PG. 76

ALLISON TRUST
0.52 AC.
O.R. 118. PG. 544

JANET HOYLMAN
5.00 AC.
O.R. 39. PG. 105

TRUST OF DAVID ALLISON
0.55 AC.
O.R. 118. PG. 545

VIRGIL ORSBORNE
ORIG. 5.935 AC.
O.R. 8. PG. 271

MERLE ORSBORNE
5.935 AC.
O.R. 8. PG. 275

CHARLES STEVENS
9.859 AC.
O.R. 93. PG. 385

N 63°21'49"E
501.73'

N 18°33'40"W
84.79'

N 59°14'00"E
266.20'

424.08'
S 59°14'00"W

3.355 ACRES

OF WHICH 0.022 ACRE
IS WITHIN THE HIGHWAY
RIGHT-OF-WAY

N 13°26'16"W
275.93'

328.64'
S 60°37'18"W

370.14'
S 10°53'54"E

271.21'

N 09°30'00"W

65.78'

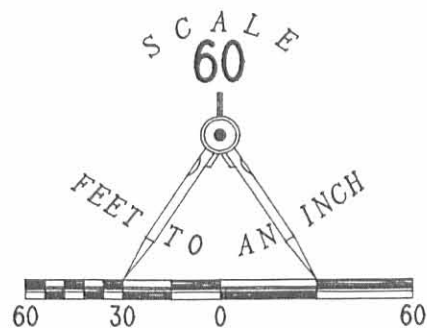
33.00'

32.19'

LEGEND

- 3/4" I. ROD FOUND
- FENCE POST FOUND
- ⊙ 1-1/2" PIPE FOUND
- 5/8" I. ROD FOUND
- ⊕ RAILROAD SPIKE SET
- 5/8" I. ROD SET

TOWNSHIP ROAD 256 (60')
MILL STREET



REFERENCE LOGAN COUNTY ROAD RECORDS
FOR WIDTH OF TOWNSHIP ROAD 256

SURVEY OF 3.355 ACRES OUT OF THE
VIRGIL ORSBORNE 5.935 ACRE TRACT
OFFICIAL RECORD 8, PAGE 271
VILLAGE OF DEGRAFF
SECTION 12, T-3, R-13
MIAMI TOWNSHIP
LOGAN COUNTY, OHIO



SURVEYED BY:
Jeffrey I. Lee
JEFFREY I. LEE
PROFESSIONAL SURVEYOR 6359
DECEMBER 31, 1991

LEE SURVEYING & MAPPING CO.
143 East Columbus Avenue
BELLEFONTAINE, OHIO 43311
(513) 593-7335

INDEXED ON MAP
7399 1P

ORIGINAL STAMP IN GREEN

REC'D 10-4-07 S.M.J.

Lee Surveying and Mapping Co., Inc.

Land Surveys • Topography • Subdivisions • Construction Layout

117 N. Madriver St.
Bellefontaine OH 43311



Phone: (937) 593-7335
Fax: (937) 593-7444

ORSBORNE 5.00 FEET WIDE WATER LINE EASEMENT

Lying in Section 12, Town 3, Range 13, Village of DeGraff, Miami Township, Logan County, Ohio.

Being a 5.00 feet wide water line easement over the Merle Orsborne and Stephanie Orsborne 5.935 acre tract as deeded and described in Official Record 8, Page 275 of the Logan County Records of Deeds and being more particularly described as follows:

Commencing on a 3/4 inch iron rod found on the center-line of Mill Street (Township Road 256) at P.I. Station 17+00 (Logan County Engineer's Field Book 490, Pg. 76).

THENCE, with the center-line of Mill Street (60 feet wide), S 9°-30'-00"E, a distance of 369.14 feet to a railroad spike found.

THENCE, with the south line of the James L. Faulder 2.580 acre tract (O.R. 201, Pg. 687), N 60°-33'-55"E, a distance of 31.91 feet to a point on the east right-of-way of Mill Street at the TRUE POINT OF BEGINNING.

THENCE, with the south line of the said 2.580 acre tract, N 60°-33'-55"E, a distance of 5.32 feet to a point.

THENCE, S 9°-30'-00"E, a distance of 110.88 feet to a point.

THENCE, S 80°-30'-00"W, a distance of 5.00 feet to a point of the east right-of-way of Mill Street.

THENCE, with the east right-of-way of Mill Street, N 9°-30'-00"W, a distance of 109.06 feet to the point of beginning.

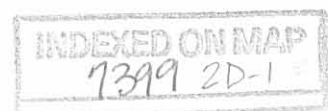
The basis for bearings is the center-line of Mill Street, south of Station 17+00, being S 9°-30'-00"E, and all other bearings are from angles and distances measured in a field survey by Lee Surveying and Mapping Co., Inc. on September 25, 2007.



Description prepared by:

William K. Bruce
Professional Surveyor 7437
September 28, 2007

3311097C



REC'D 10-4-07 SMM OK
Lee Surveying and Mapping Co., Inc.

Land Surveys • Topography • Subdivisions • Construction Layout

117 N. Madriver St.
Bellefontaine OH 43311



Phone: (937) 593-7335
Fax: (937) 593-7444

**FAULDER
10.00 FEET WIDE WATER LINE EASEMENT**

Lying in Section 12, Town 3, Range 13, Village of DeGraff, Miami Township, Logan County, Ohio.

Being a 10.00 feet wide water line easement over the James L. Faulder 2.580 acre tract as deeded and described in Official Record 201, Page 687 of the Logan County Records of Deeds and being more particularly described as follows:

Commencing on a 3/4 inch iron rod found on the center-line of Mill Street (Township Road 256) at P.I. Station 17+00 (Logan County Engineer's Field Book 490, Pg. 76).

THENCE, with the center-line of Mill Street (60 feet wide), S 9°-30'-00"E, a distance of 369.14 feet to a railroad spike found.

THENCE, with the north line of the Merle Orsborne and Stephanie Orsborne 5.935 acre tract (O.R. 8, Pg. 275), N 60°-33'-55"E, a distance of 153.54 feet to a point at the TRUE POINT OF BEGINNING.

THENCE, with the center-line of this easement, the following two courses:

S 74°-59'-39"W, a distance of 89.70 feet to a point.

S 75°-21'-49"W, a distance of 25.15 feet to a point at the terminus of this easement, on the east right-of-way of Mill Street.

The basis for bearings is the center-line of Mill Street, south of Station 17+00, being S 9°-30'-00"E, and all other bearings are from angles and distances measured in a field survey by Lee Surveying and Mapping Co., Inc. on September 25, 2007.



ORIGINAL STAMP IN GREEN

Description prepared by:

A handwritten signature in cursive script that reads 'William K. Bruce'.

William K. Bruce
Professional Surveyor 7437
September 28, 2007

3311097C



REV'D 10-4-07 SVM/AL

Lee Surveying and Mapping Co., Inc.

Land Surveys • Topography • Subdivisions • Construction Layout

117 N. Madriver St.
Bellefontaine OH 43311



Phone: (937) 593-7335
Fax: (937) 593-7444

ORSBORNE 10.00 FEET WIDE WATER LINE EASEMENT

Lying in Section 12, Town 3, Range 13, Village of DeGraff, Miami Township, Logan County, Ohio.

Being a 10.00 feet wide water line easement over the Merle Orsborne and Stephanie Orsborne 5.935 acre tract as deeded and described in Official Record 8, Page 275 of the Logan County Records of Deeds and being more particularly described as follows:

Commencing on a 3/4 inch iron rod found on the center-line of Mill Street (Township Road 256) at P.I. Station 17+00 (Logan County Engineer's Field Book 490, Pg. 76).

THENCE, with the center-line of Mill Street (60 feet wide), S 9°-30'-00"E, a distance of 369.14 feet to a railroad spike found.

THENCE, with the south line of the James L. Faulder 2.580 acre tract (O.R. 201, Pg. 687), N 60°-33'-55"E, a distance of 153.54 feet to a point at the TRUE POINT OF BEGINNING.

THENCE, with the center-line of this easement, the following five courses:

N 74°-59'-39"E, a distance of 20.91 feet to a point.

N 71°-05'-10"E, a distance of 89.21 feet to a point.

N 62°-51'-31"E, a distance of 124.20 feet a point.

N 52°-58'-35"E, a distance of 132.18 feet to a point.

N 39°-22'-50"E, a distance of 24.94 feet to a point at the terminus of this easement on the south line of the James L. Faulder 3.355 acre tract (O.R. 148, Pg. 371).

The basis for bearings is the center-line of Mill Street, south of Station 17+00, being S 9°-30'-00"E, and all other bearings are from angles and distances measured in a field survey by Lee Surveying and Mapping Co., Inc. on September 25, 2007.

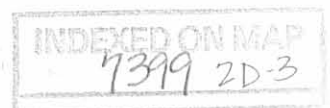


ORIGINAL STAMP IN GREEN

Description prepared by:

William K. Bruce
Professional Surveyor 7437
September 28, 2007

3311097C



REV'D 10-4-07 SAM OK

Lee Surveying and Mapping Co., Inc.

Land Surveys • Topography • Subdivisions • Construction Layout

117 N. Madriver St.
Bellefontaine OH 43311



Phone: (937) 593-7335
Fax: (937) 593-7444

FAULDER 10.00 FEET WIDE WATER LINE EASEMENT

Lying in Section 12, Town 3, Range 13, Village of DeGraff, Miami Township, Logan County, Ohio.

Being a 10.00 feet wide water line easement over the James L. Faulder 3.355 acre tract as deeded and described in Official Record 148, Page 371 of the Logan County Records of Deeds and being more particularly described as follows:

Commencing on a 3/4 inch iron rod found on the center-line of Mill Street (Township Road 256) at P.I. Station 17+00 (Logan County Engineer's Field Book 490, Pg. 76).

THENCE, with the center-line of Mill Street (60 feet wide), S 9°-30'-00"E, a distance of 369.14 feet to a railroad spike found.

THENCE, with the north line of the Merle Orsborne and Stephanie Orsborne 5.935 acre tract (O.R. 8, Pg. 275), N 60°-33'-55"E, a distance of 539.88 feet to a point at the TRUE POINT OF BEGINNING.

THENCE, with the center-line of this easement, the following three courses:

N 39°-22'-50"E, a distance of 172.01 feet to a point.

N 31°-32'-34"E, a distance of 61.97 feet to a point.

N 45°-19'-03"E, a distance of 51.78 feet to a point at the terminus of this easement on the west line of the Charles J. Stevens 9.86 acre tract (O.R. 93, Pg. 385).

The basis for bearings is the center-line of Mill Street, south of Station 17+00, being S 9°-30'-00"E, and all other bearings are from angles and distances measured in a field survey by Lee Surveying and Mapping Co., Inc. on September 25, 2007.



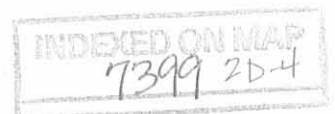
ORIGINAL STAMP IN GREEN

Description prepared by:

A handwritten signature in black ink that reads 'William K. Bruce'.

William K. Bruce
Professional Surveyor 7437
September 28, 2007

3311097C

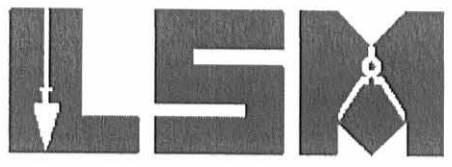


REC'D 10-4-07 SWM dk

Lee Surveying and Mapping Co., Inc.

Land Surveys • Topography • Subdivisions • Construction Layout

117 N. Madriver St.
Bellefontaine OH 43311



Phone: (937) 593-7335
Fax: (937) 593-7444

STEVENS 10.00 FEET WIDE WATER LINE EASEMENT

Lying in Section 12, Town 3, Range 13, Village of DeGraff, Miami Township, Logan County, Ohio.

Being a 10.00 feet wide water line easement over the Charles J. Stevens 9.86 acre tract as deeded and described in Official Record 93, Page 385 of the Logan County Records of Deeds and being more particularly described as follows:

Commencing on a 3/4 inch iron rod found on the center-line of Mill Street (Township Road 256) at P.I. Station 17+00 (Logan County Engineer's Field Book 490, Pg. 76).

THENCE, with the center-line of Mill Street (60 feet wide), S 9°-30'-00"E, a distance of 369.14 feet to a railroad spike found.

THENCE, with the north line of the Merle Orsborne and Stephanie Orsborne 5.935 acre tract (O.R. 8, Pg. 275), N 60°-33'-55"E, a distance of 769.10 feet to a point.

THENCE, with the east line of the James L. Faulder 3.355 acre tract (O.R. 148, Pg. 371), N 10°-59'-11"W, a distance of 111.57 feet to a point at the TRUE POINT OF BEGINNING.

THENCE, with the center-line of this easement, the following nine courses:

N 45°-19'-03"E, a distance of 59.35 feet to a point.

N 58°-35'-11"E, a distance of 82.38 feet to a point.

N 58°-55'-13"E, a distance of 129.64 feet to a point.

N 57°-53'-06"E, a distance of 60.66 feet to a point.

N 28°-31'-30"E, a distance of 39.52 feet to a point.

N 19°-56'-26"E, a distance of 44.24 feet to a point.

N 26°-55'-06"E, a distance of 140.00 feet to a point.

N 23°-55'-16"E, a distance of 66.72 feet to a point.

N 31°-49'-22"E, a distance of 75.02 feet to a point at the terminus of this easement on the south line of Lot 49 of the Original Plat of DeGraff (Plat Cabinet A, Slide 79).

The basis for bearings is the center-line of Mill Street, south of Station 17+00, being S 9°-30'-00"E, and all other bearings are from angles and distances measured in a field survey by Lee Surveying and Mapping Co., Inc. on September 25, 2007.



ORIGINAL STAMP IN GREEN

Description prepared by:

William K. Bruce
Professional Surveyor 7437
September 28, 2007



3311097C

REC'D 10-4-07 S.M.Y. OK

Lee Surveying and Mapping Co., Inc.

Land Surveys • Topography • Subdivisions • Construction Layout

117 N. Madriver St.
Bellefontaine OH 43311



Phone: (937) 593-7335
Fax: (937) 593-7444

LOT NO. 49 10.00 FEET WIDE WATER LINE EASEMENT

Lying in Section 12, Town 3, Range 13, Village of DeGraff, Miami Township, Logan County, Ohio.

Being a 10.00 feet wide water line easement over Lot No. 49 of the original plat of DeGraff as recorded in Plat Cabinet A, Slide 79 of the Logan County Records of Plats and being more particularly described as follows:

Commencing on a point at the southeast corner of Lot No. 49 on the west right-of-way of Boggs Street.

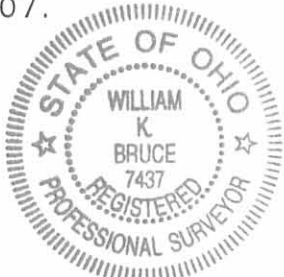
THENCE, with the south line of Lot No. 49, S 65-00'-00"W, a distance of 24.06 feet to a point at the TRUE POINT OF BEGINNING.

THENCE, with the center-line of this easement, the following two courses:

N 31°-49'-22"E, a distance of 9.14 feet to a point.

N 65°-00'-00"E, a distance of 16.42 feet to a point at the terminus of this easement, on the west right-of-way of Boggs Street.

The basis for bearings is the center-line of Mill Street, south of Station 17+00, being S 9°-30'-00"E, and all other bearings are from angles and distances measured in a field survey by Lee Surveying and Mapping Co., Inc. on September 25, 2007.



ORIGINAL STAMP IN GREEN

Description prepared by:

William K. Bruce
Professional Surveyor 7437
September 28, 2007

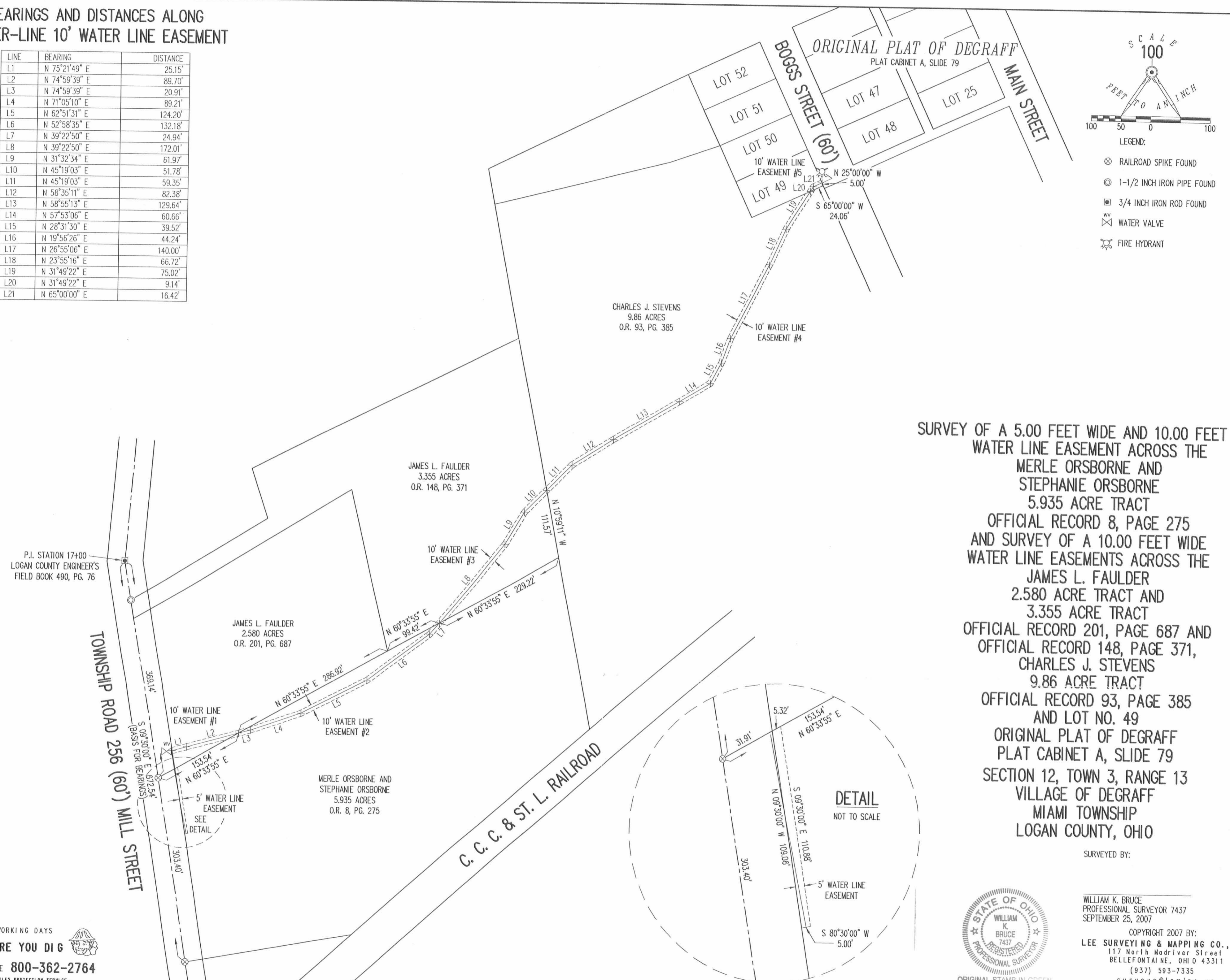
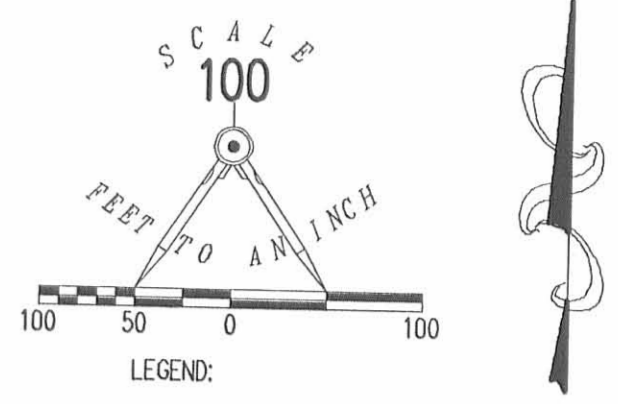
3311097C



REV'D 10-4-07 SMJ/BK

BEARINGS AND DISTANCES ALONG CENTER-LINE 10' WATER LINE EASEMENT

LINE	BEARING	DISTANCE
L1	N 75°21'49" E	25.15'
L2	N 74°59'39" E	89.70'
L3	N 74°59'39" E	20.91'
L4	N 71°05'10" E	89.21'
L5	N 62°51'31" E	124.20'
L6	N 52°58'35" E	132.18'
L7	N 39°22'50" E	24.94'
L8	N 39°22'50" E	172.01'
L9	N 31°32'34" E	61.97'
L10	N 45°19'03" E	51.78'
L11	N 45°19'03" E	59.35'
L12	N 58°35'11" E	82.38'
L13	N 58°55'13" E	129.64'
L14	N 57°53'06" E	60.66'
L15	N 28°31'30" E	39.52'
L16	N 19°56'26" E	44.24'
L17	N 26°55'06" E	140.00'
L18	N 23°55'16" E	66.72'
L19	N 31°49'22" E	75.02'
L20	N 31°49'22" E	9.14'
L21	N 65°00'00" E	16.42'



SURVEY OF A 5.00 FEET WIDE AND 10.00 FEET WIDE WATER LINE EASEMENT ACROSS THE MERLE ORSBORNE AND STEPHANIE ORSBORNE 5.935 ACRE TRACT OFFICIAL RECORD 8, PAGE 275 AND SURVEY OF A 10.00 FEET WIDE WATER LINE EASEMENTS ACROSS THE JAMES L. FAULDER 2.580 ACRE TRACT AND 3.355 ACRE TRACT OFFICIAL RECORD 201, PAGE 687 AND OFFICIAL RECORD 148, PAGE 371, CHARLES J. STEVENS 9.86 ACRE TRACT OFFICIAL RECORD 93, PAGE 385 AND LOT NO. 49 ORIGINAL PLAT OF DEGRAFF PLAT CABINET A, SLIDE 79 SECTION 12, TOWN 3, RANGE 13 VILLAGE OF DEGRAFF MIAMI TOWNSHIP LOGAN COUNTY, OHIO



SURVEYED BY:
 WILLIAM K. BRUCE
 PROFESSIONAL SURVEYOR 7437
 SEPTEMBER 25, 2007
 COPYRIGHT 2007 BY:
LEE SURVEYING & MAPPING CO., INC.
 117 North Madriver Street
 BELLEFONTAINE, OHIO 43311
 (937) 593-7335
 surveys@lsmcinc.us

2 WORKING DAYS
BEFORE YOU DIG
 CALL TOLL FREE **800-362-2764**
 OHIO UTILITIES PROTECTION SERVICE

INDEXED ON MAP
 17394 2P

Lee Surveying and Mapping Co.



Farm Surveys • Lot Surveys • Topography • Subdivisions • Construction Layout

855 EAST SANDUSKY AVENUE
BELLEFONTAINE, OHIO 43311

(513) 593-5780

CLAYTON M. LEE, P.S.
JEFFREY I. LEE, P.S.

ORSBORNE - SOUTH 5.935 ACRES

Lying in Section 12, T-3, R-13, Miami Township, Logan County, Ohio.
Being mostly in the Village of DeGraff.

Being the south half of that 10.963 acres (Deed) 11.87 acres (Actual)
lying in the name of Austin as deeded and described in Volume 282, Page
509 of the Logan County Records of Deeds and being more particularly des-
cribed as follows:

Beginning at a railroad spike set on the center-line of Township Road
256, a distance of 150.7 feet northerly, with said center-line, from the
north line of the Con-Rail right-of-way and marking the southwest corner
of said 11.87 acres and the northwest corner of Howard's 0.50 acre lot (Vol-
ume 372, Page 641).

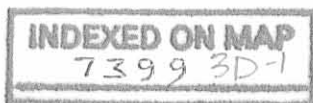
THENCE, with the said center-line of Township Road 256, N 9°-30' W, a
distance of 303.40 feet to a railroad spike.

THENCE, crossing through the middle of said 11.87 acres, N 60°-33'-55" E,
a distance of 769.10 feet to a 5/8" iron rod set on the east line of said
11.87 acres.

THENCE, with said east line, S 10°-59'-06" E, a distance of 295.05
feet to a 5/8" iron rod set on the north line of the aforementioned ConRail
right-of-way.

THENCE, with said north right-of way line, on a curve to the right
having a radius of 7564.5 feet, a distance of 522.86 feet (Chord=
S 49°-18'-53" W, 522.76 feet) to a 1/2" square iron bar found at the east
corner of the aforementioned 0.50 acre lot.

THENCE, with the north line of said 0.50 acre lot, S 80°-30'-15" W, a
distance of 283.43 feet to the point of beginning. Containing 5.935 acres
of which 4.835 acres are in the Village of DeGraff.



Prepared by:

Clayton M. Lee
Clayton M. Lee
Registered Surveyor No. 6181
July 29, 1985



ORIGINAL STAMP IN GREEN

This description prepared from an actual field survey.

Lee Surveying and Mapping Co.



Farm Surveys • Lot Surveys • Topography • Subdivisions • Construction Layout

855 EAST SANDUSKY AVENUE
BELLEFONTAINE, OHIO 43311

(513) 593-5780

CLAYTON M. LEE, P.S.
JEFFREY I. LEE, P.S.

ORSBORNE- NORTH 5.935 ACRES

Lying in the Village of DeGraff, Section 12, T-3, R-13, Miami Township, Logan County, Ohio.

Being the north half of that 10.963 acres (Deed) 11.87 acres (Actual) lying in the name of Austin as deeded and described in Volume 282, Page 509 of the Logan County Records of Deeds and being more particularly described as follows:

Beginning at a railroad spike set on the center-line of Township Road 256, a distance of 454.10 feet northerly, with said center-line, from the north right-of-way line of ConRail.

THENCE, with the said center-line of Township Road 256, N 9° -30' W, a distance of 303.40 feet to a $1\frac{1}{2}$ " iron pipe found at the northwest corner of said 11.87 acre tract; the same being the southwest corner of the Allison land (Volume 328, Page 393).

THENCE, with the south and east lines of said Allison land, the following 2 bearings and distances:

N 59° -14' E, 266.20 feet to the southeast corner of a wood corner post.

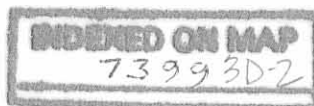
N 18° -42' W, 85.42 feet to a $3/4$ " iron rod found marking the southwest corner of the Hoylman 5 acre tract (Volume 391, Page 507).

THENCE, with the south line of said 5 acre tract, N 63° -08'-50" E, a distance of 501.79 feet to a $3/4$ " iron rod found at the northeast corner of the aforementioned 11.87 acres.

THENCE, with the east line of said 11.87 acre tract, S 10° 59'-06" E, a distance of 371.84 feet to a $5/8$ " iron rod.

THENCE, across the middle of said 11.87 acres, S 60° -33'-55" W, a distance of 769.10 feet to the point of beginning.

Containing 5.935 acres.



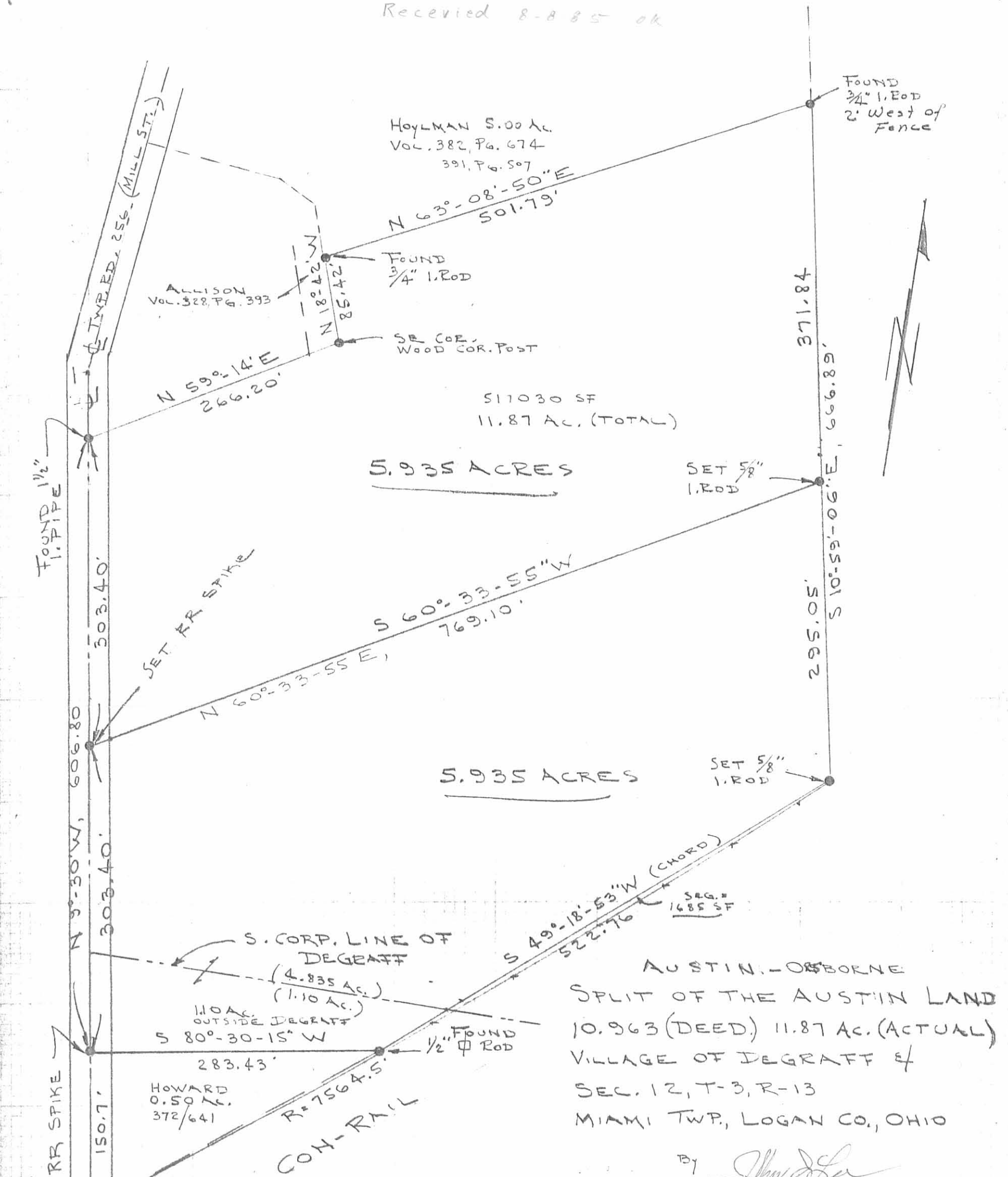
Prepared by:

Clayton M. Lee
Clayton M. Lee
Registered Surveyor No. 6181
July 29, 1985



ORIGINAL STAMP IN GREEN

This description prepared from an actual field survey.



HOYLMAN 5.00 AC.
VOL. 382, PG. 674
391, PG. 507

ALLISON
VOL. 328, PG. 393

FOUND
3/4" I. ROD

SR COR.
WOOD COR. POST

517030 SF
11.87 AC. (TOTAL)

5.935 ACRES

SET 5/8"
I. ROD

5.935 ACRES

SET 5/8"
I. ROD

AUSTIN - OSBORNE

SPLIT OF THE AUSTIN LAND
10.963 (DEED) 11.87 AC. (ACTUAL)

VILLAGE OF DEGRAFF &

SEC. 12, T-3, R-13

MIAMI TWP., LOGAN CO., OHIO

By

JEFFREY I. LEE
REG. SURVEYOR 6359
JULY 23, 1985

SCALE = 1" = 100'

REFER: Vol. 282, PG. 509
Vol. 391, PG. 507

INDEXED ON MAP
7399 3P



L-1309-4