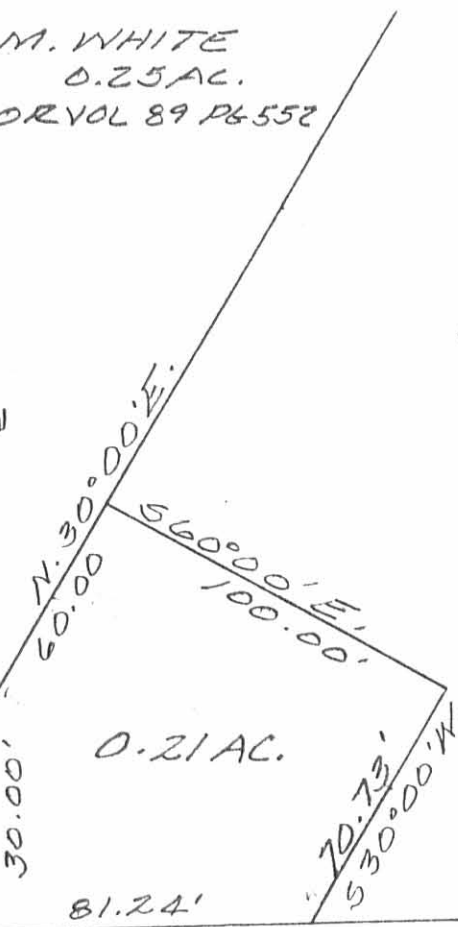


M. WHITE
0.25 AC.
OR VOL 89 PG 552

CHARLES LONGBRAKE
6.75 AC.
DB VOL 330 PG 301



SR 235
NORTH
30.00'
SEC 7
SEC. 1 T. 2 R. 14



R. KREGLOW
0.75 AC.
DB VOL. 359 PG 618

SURVEY OF 0.21 AC. TRACT IN
SECTION 1, TOWN 2, RANGE 14,
MIAMI TOWNSHIP, LOGAN COUNTY,
OHIO IN THE VILLAGE OF DEGRAFF
FOR CHARLES LONGBRAKE.
NOVEMBER, 1989
SCALE: 1"=50'

MADE FROM EXISTING
RECORDS.

INDEXED ON MAP
7970 1P



Leslie H. Geeslin
LESLIE H. GEESLIN
RUSHSVANIA, OHIO

REC'D 10-22-99 SMJ OK ✓

Lee Surveying and Mapping Co., Inc.

Land Surveys • Topography • Subdivisions • Construction Layout

117 N. Madriver St.
Bellefontaine OH 43311



Phone: (937) 593-7335
Fax: (937) 593-7444

Longbrake 0.200 ACRES

Lying in Section 1 and 7, Town 2, Range 14, Miami Township, Village of DeGraff, Logan County, Ohio.

Being out of the Charles E. Longbrake and Jean Longbrake 38.33 acre tract as deeded and described in Volume 330, Page 301 of the Logan County Records of Deeds and being more particularly described as follows:

Beginning at a 1/2 inch iron pipe found on the west line of Section 1 and on the center-line of Cretcher Street (State Route 235, 60 feet wide), at an angle in the road, (Point "A" of the Logan County Engineer's Field Book 584, page 77).

THENCE, with the center-line of Cretcher Street, N 3 -00'-00" E, a distance of 35.16 feet to a MAG nail set.

THENCE, with the east line of Michael White's 6.746 acre tract (O.R. 89, Pg. 552), N 32-13'-20" E, a distance of 8.16 feet to a MAG nail set.

THENCE, S 87-00'-00" E, a distance of 101.98 feet to a 5/8 inch iron rod set, passing a 5/8 inch iron rod set at 25.02 feet.

THENCE, S 9-05'-02" E, a distance of 75.55 feet to an 8 inch wood post found.

THENCE, with the north line of the Charles E. Longbrake 0.75 acre tract (O.R. 167, Pg. 610), N 87-12'-20" W, a distance of 139.73 feet to a 3/8 inch square iron bar found, passing a 5/8 inch iron rod set at 105.29 feet, passing into Section 7.

THENCE, with the center-line of Cretcher Street, N 32°-13'-45" E, a distance of 36.77 feet to the point of beginning.

Containing 0.200 acre, of which 0.051 acre is within the highway right-of-way with 0.007 acre in Section 7 and 0.193 acre in Section 1.

The basis for bearings is the center-line of State Route 235 being N 32°-13'-45" E, and all other bearings are from angles and distances measured in a field survey by Lee Surveying and Mapping Co., Inc. on September 30, 1999.

Description prepared by:



Jeffrey I. Lee
Jeffrey I. Lee
Professional Surveyor 6359
September 23, 1999

L-813

ORIGINAL STAMP IN GREEN

2970 2D-1

Land Surveys • Topography • Subdivisions • Construction Layout

117 N. Madriver St.
Bellefontaine OH 43311



Phone: (937) 593-7335
Fax: (937) 593-7444

**Longbrake
0.727 Acres**

Lying in Section 1 and 7, Town 2, Range 14, Miami Township, Village of DeGraff, Logan County, Ohio.

Being all of the Charles E. Longbrake and Jean Longbrake 0.75 acre tract as deeded and described in Official Record 167, Page 610 of the Logan County Records of Deeds and being more particularly described as follows:

Beginning at a 1/2 inch iron pipe found on the west line of Section 1 and on the center-line of Cretcher Street (State Route 235, 60 feet wide), at an angle in the road, (Point "A" of the Logan County Engineer's Field Book 584, page 77).

THENCE, with the center-line of State Route 235, S 32°-13'-45" W, a distance of 36.77 feet to a 3/8 inch square iron bar found at the northwest corner of the said 0.75 acre tract and the TRUE POINT OF BEGINNING.

THENCE, with the south line of the Charles E. Longbrake 38.33 acre tract (Vol. 330, Pg. 301), S 87°-12'-20" E, a distance of 139.73 feet to an 8 inch wood post found, passing a 5/8 inch iron rod set at 34.44 feet, passing into Section 1.

THENCE, with the west line of the Charles J. Stevens 8.95 acre tract (O.R. 245, Pg. 168, Tract II), S 22°-21'-11" W, a distance of 244.12 feet to a 3/4 inch square iron bar found.

THENCE, with the north line of the Philip R. Fawcett 0.95 acre tract (O.R. 67, Pg. 119), N 64°-19'-02" W, a distance of 164.64 feet to a P.K. nail found, passing a 5/8 inch iron rod found at 134.46 feet, passing into Section 7.

THENCE, with the center-line of Cretcher Street, N 32°-13'-45" E, a distance of 190.60 feet to the point of beginning.

Containing 0.727 acre, of which 0.136 acre is within the highway right-of-way with 0.305 acre in Section 7 and 0.422 acre in Section 1.

The basis for bearings is the center-line of State Route 235 being N 32°-13'-45" E, and all other bearings are from angles and distances measured in a field survey by Lee Surveying and Mapping Co., Inc. on September 30, 1999.



Description prepared by:

[Signature]
Jeffrey I. Lee
Professional Surveyor 6359
September 23, 1999

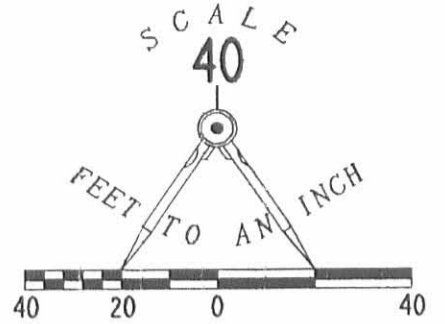
L-813

797020-2

REC'D 10-22-99 SML/OK

MICHAEL WHITE &
LUCINDA WHITE
6.746 ACRES
O.R. 89, PG. 552

CHARLES E. LONGBRAKE &
JEAN LONGBRAKE
38.33 ACRES
VOL. 330, PG. 301



POINT "A" OF THE
LOGAN COUNTY ENGINEER'S
FIELD BOOK 584, PAGE 77

0.200 ACRE
OF WHICH 0.051 ACRE IS
WITHIN THE HIGHWAY RIGHT-OF-WAY

0.727 ACRE
OF WHICH 0.136 ACRE IS
WITHIN THE HIGHWAY RIGHT-OF-WAY

CHARLES E. LONGBRAKE &
JEAN LONGBRAKE
0.75 ACRE
O.R. 167, PG. 610

CHARLES J. STEVENS &
BRENDA L. STEVENS
8.95 ACRES
O.R. 245, PG. 168
TRACT II

PHILIP R. FAWCETT &
ELIZABETH A. FAWCETT
0.95 ACRE
O.R. 67, PG. 119

235

CRETCHER STREET (60' WIDE)
(BASIS OF BEARINGS)
N 32° 13' 45" E
190.60'

SECTION 7
SECTION 1

SURVEY OF THE
CHARLES E. LONGBRAKE AND
JEAN LONGBRAKE
0.75 ACRE TRACT
OFFICIAL RECORD 167, PAGE 610
AND A 0.200 ACRE TRACT
OUT OF THE
CHARLES E. LONGBRAKE AND
JEAN LONGBRAKE
38.33 ACRES
VOLUME 330, PAGE 301
SECTIONS 1 & 7, TOWN 2, RANGE 14
MIAMI TOWNSHIP
VILLAGE OF DEGRAFF
LOGAN COUNTY, OHIO

SURVEYED BY:

JEFFREY T. LEE
PROFESSIONAL SURVEYOR 6359
SEPTEMBER 30, 1999



ORIGINAL STAMP IN GREEN

COPYRIGHT 1999 BY:

LEE SURVEYING & MAPPING CO., INC.
117 North Madriver Street
BELLEFONTAINE, OHIO 43311
(937) 593-7335

D-358

CLOGBRK2

L-813

2 WORKING DAYS
BEFORE YOU DIG
CALL TOLL FREE **800-362-2764**
OHIO UTILITIES PROTECTION SERVICE.

79702P

2661D 7-24-99 original

Lee Surveying and Mapping Co., Inc.

Land Surveys • Topography • Subdivisions • Construction Layout

117 N. Madriver St.
Bellefontaine OH 43311



Phone: (937) 593-7335
Fax: (937) 593-7444

WHITE
0.029 ACRES

Lying in Section 1, Town 2, Range 14, Miami Township, Village of Degraff,
Logan County, Ohio.

Being out of the Michael White and Lucinda White 6.746 acre tract as deeded
and described in Official Record 89, Page 552 of the Logan County Records of Deeds
and being more particularly described as follows:

Beginning at a 1/2 inch iron pipe found on the center-line of State Route 235
(Cretcher Street, 60 feet wide), at an angle in the road, (point "A" of the Logan County
Engineer's field book 584, page 77).

THENCE, with the center-line of State Route 235, N 3°-00'-00" E, a distance of
35.16 feet to a MAG nail set at the south corner of the 6.746 acre tract and the TRUE
POINT OF BEGINNING.

THENCE, with the center-line of State Route 235, N 3°-00'-00" E, a distance of
67.12 feet to a MAG nail set.

THENCE, S 87°-00'-00" E, a distance of 37.55 feet to a 5/8 inch iron rod set,
passing a 5/8 inch iron rod set at 30.00 feet.

THENCE, with the west line of the Charles E. Longbrake 38.33 acre tract (Vol.
330, Pg. 301), S 32°-13'-20" W, a distance of 76.91 feet to the point of beginning,
passing a 5/8 inch iron rod set at 15.46 feet.

Containing 0.029 acre, of which 0.028 acre is within the highway right-of-way.

The basis for bearings is the center-line of State Route 235 being
N 3°-00'-00" E, and all other bearings are from angles and distances measured in a
field survey by Lee Surveying and Mapping Co., Inc. on September 17, 1999.

Description prepared by:

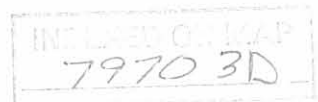
A handwritten signature in black ink, appearing to read 'Jeffrey I. Lee'.

Jeffrey I. Lee
Professional Surveyor 6359
September 23, 1999

L-813

ORIGINAL STAMP IN GREEN

MEMBER: AMERICA CONGRESS ON SURVEYING & MAPPING (ACSM) • NATIONAL SOCIETY OF PROFESSIONAL SURVEYORS
(NSPS)
PROFESSIONAL LAND SURVEYORS OF OHIO (PLSO) • SURVEYORS HISTORICAL SOCIETY



(60' WIDE)

235

30.00' S 87°00'00"E
37.55'

MICHAEL WHITE &
LUCINDA WHITE
6.746 ACRES
O.R. 89, PG. 552

0.029 ACRES
OF WHICH 0.028 ACRE IS WITHIN
THE HIGHWAY RIGHT-OF-WAY

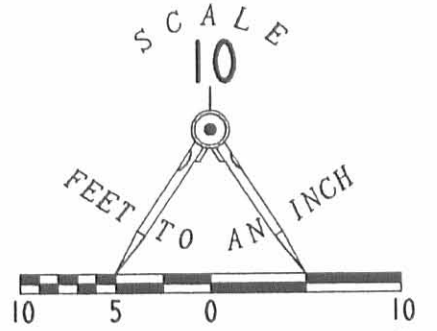
N 03°00'00"E (BASIS FOR BEARINGS)
67.12'

61.45' 76.91'
S 32°13'20"W

N 03°00'00"E
35.16'

POINT "A"
LOGAN COUNTY ENGINEER'S
FIELD BOOK 584, PG. 77

CRETCHER STREET



LEGEND

- MAG NAIL SET
- 5/8" IRON ROD SET
- 1/2" IRON ROD FOUND

CHARLES E. LONGBRAKE &
JEAN LONGBRAKE
38.33 ACRES
VOL. 330, PG. 301

SURVEY OF A 0.029 ACRE TRACT
OUT OF THE
MICHAEL WHITE & LUCINDA WHITE
6.766 ACRE TRACT
OFFICIAL RECORD 89, PAGE 552
SECTION 1, TOWN 2, RANGE 14
MIAMI TOWNSHIP
VILLAGE OF DEGRAFF
LOGAN COUNTY, OHIO



ORIGINAL STAMP IN GREEN

SURVEYED BY:

JEFFREY I. LEE
PROFESSIONAL SURVEYOR 6359
SEPTEMBER 17, 1999

COPYRIGHT 1999 BY:

LEE SURVEYING & MAPPING CO., INC.
117 North Madriver Street
BELLEFONTAINE, OHIO 43311
(937) 593-7335

2 WORKING DAYS
BEFORE YOU DIG
CALL TOLL FREE 800-362-2764
OHIO UTILITIES PROTECTION SERVICE.

INDEXED ON MAP
79703P

D-355 CLONGBRK 813-3