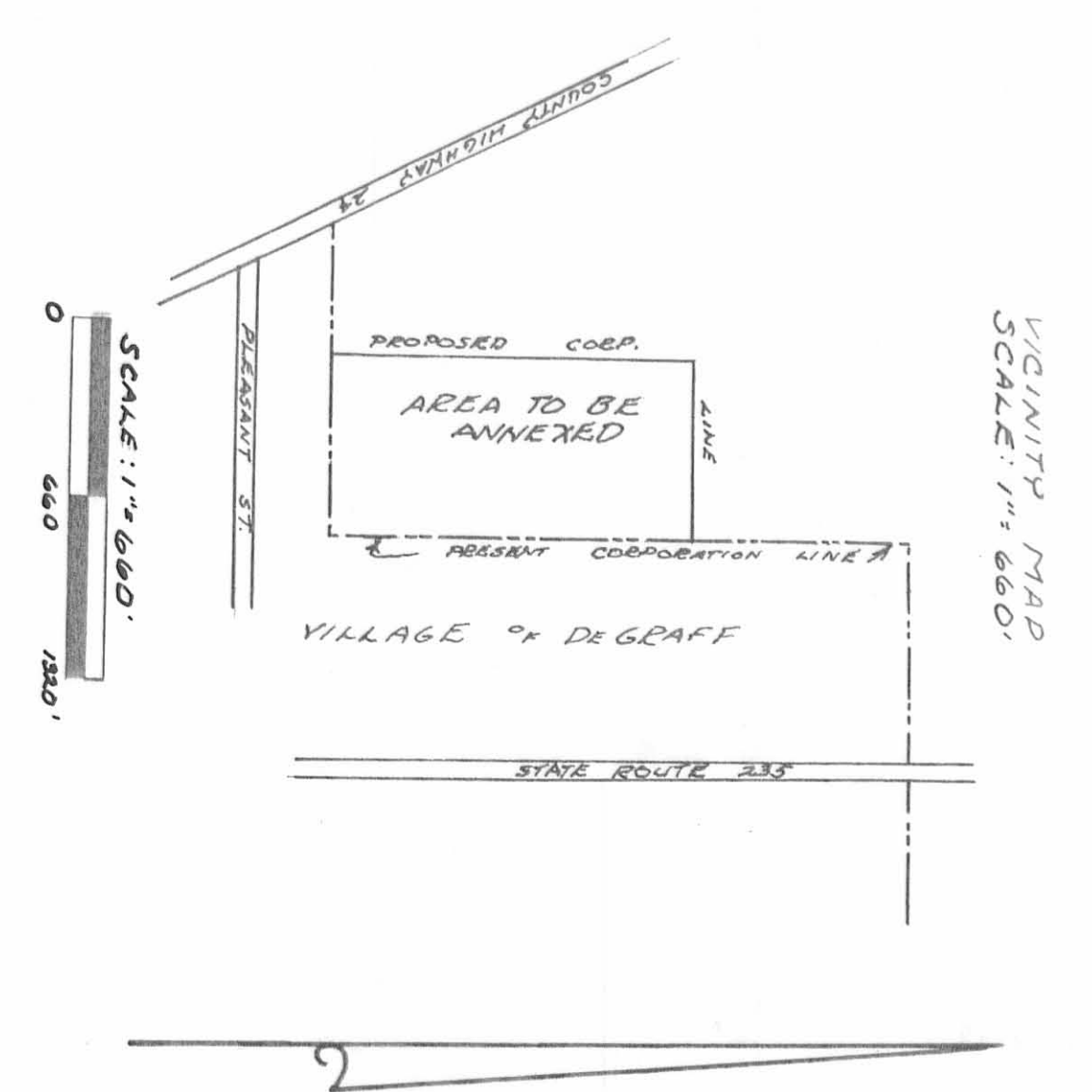
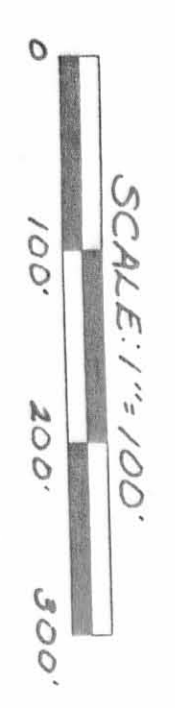


LEGEND:  
O = CONCRETE CORNER POST  
O = 5/8 INCH IRON BAR SET



PROPOSED ANNEXATION TO THE VILLAGE OF DEGRAFF  
March 27, 1992

The following proposed corporation extension for the Village of DeGraff situated in the State of Ohio, County of Logan, Township of Pleasant, being part of Section 7, Town 2, Range 14, B.M.R.S. and more particularly described as follows:

Beginning at an angle in the existing corporation line that is in the west line of the Greenwood Cemetery that is N. 00°18'50" W. 280.50 feet from the intersection of the west line of said Cemetery with the north line of Pleasant Street.

Thence with said existing corporation line S. 88° 01' 12" W. 716.20 feet to a point in the west line of the Village of DeGraff's 4.95 acre tract as described in D. B. Vol. 353 Page 973.

Thence with said west line and the east line of David A. Reames' 20,508 acre tract as described in O. R. Vol. 116 Page 610 N. 00° 04' 30" W. 1373.28 feet to a 5/8 inch iron bar set at the northwest corner of the Village of DeGraff's 22,029 acre tract as described in O. R. Vol. 105 Page 219.

Thence with the north line of said 22,029 acre tract and the south line of Nevin Hirschfeld's 40,66 acre tract as described in O. R. Vol. 10 page 238 N. 89° 35' 39" E. 717.10 feet to a concrete corner post found at the northwest corner of the Greenwood Cemetery's 18.5 acre tract as described in D. B. Vol. 123 Page 385, said point being in the present corporation line.

Thence with said Cemetery's west line and the existing corporation line S. 00° 39' 49" W. 405.81 feet to a 5/8 inch iron bar set.

Thence with said Cemetery's west line and the existing corporation line S. 00° 18' 50" E. 947.84 feet to the place of beginning. Containing 22,350 acres more or less.

The above described 22,350 acre tract being all of the Village of DeGraff's 22,029 acre tract as described in O. R. Vol. 105 Page 219 and 0.321 acre from the Village of DeGraff's 4.95 acre tract as described in D. B. Vol. 353 Page 973.

Reference is hereby made to a plat of this survey on file with the Logan County Engineer. Bearings are based on the west line of Greenwood Cemetery (S. 00° 18' 50" E.) in this field survey.

ANNEXATION MAP  
LOCATED IN SECTION 7, TOWN 2, RANGE 14,  
B.M.R.S., PLEASANT TOWNSHIP, LOGAN  
COUNTY, OHIO.  
22,350 AC.

VILLAGE OF DEGRAFF  
MAYOR \_\_\_\_\_ DATE 6-2-92  
COUNCIL PRESIDENT \_\_\_\_\_ DATE 6-2-92  
ORDINANCE NO. 92-12

PLEASANT TOWNSHIP TRUSTEES  
\_\_\_\_\_  
\_\_\_\_\_  
\_\_\_\_\_  
DATE \_\_\_\_\_

LOGAN COUNTY COMMISSIONERS  
APPROVED \_\_\_\_\_ DATE 3-2-93  
\_\_\_\_\_  
\_\_\_\_\_  
DATE 3-2-93  
\_\_\_\_\_  
DATE 3-2-93

L.U.C. REGIONAL PLANNING COMMISSION  
APPROVED \_\_\_\_\_ DATE 6-19-93

LOGAN COUNTY ENGINEER  
APPROVED \_\_\_\_\_ DATE 10-30-93

TRANSFERRED THIS 26TH DAY OF OCTOBER, 1993.  
9308137  
RECORDED IN PLAT CABINET A SLIDE 73B, RECEIVED FOR RECORD AT 4:03 O'CLOCK P.M. THIS DAY OF OCTOBER 26, 1993.

DEGRAFF PLANNING COMMISSION  
DATE N/A

PLAT PEE-APPROVAL  
DATE 5-26-92

LOGAN COUNTY TAX MAP DEPARTMENT APPROVED  
DATE 6-26-93

I HEREBY CERTIFY THAT THE ACCOMPANYING PLAT IS AN ACCURATE REPRESENTATION OF A 22,029 ACRE TRACT AS SURVEYED BY ME IN MAY, 1991 TOGETHER WITH 0.321 ACRE AS RESEARCHED FROM AVAILABLE RECORDED DEEDS, MAPS AND OTHER RECORDS OBTAINED IN THE LOGAN COUNTY RECORDS.



LESIE H. GESSLIN  
RUSHSPLELVANIA, OHIO  
PH. 513-468-2793

Received 5-11-94 checked JLB



# Lee Surveying and Mapping Co.



Farm Surveys • Lot Surveys • Topography • Subdivisions • Construction Layout

143 EAST COLUMBUS AVENUE  
BELLEFONTAINE, OHIO 43311

(513) 593-7335

JEFFREY I. LEE, P.S.

## VILLAGE OF DEGRAFF 5.000 ACRES

Lying in Section 7, Town 2, Range 14, Pleasant Township, Logan County, Ohio.

Being out of the Village of Degraff 22.029 acre tract as deeded and described in Volume 105, Page 219 of the Logan County Records of Deeds and being more particularly described as follows:

Beginning at a 3/4 inch iron rod found at the southeast corner of the Village of Degraff 4.95 acre tract (Vol. 353, Pg. 973) on the south line of Pleasant Township and the center-line of Pleasant Street.

THENCE, with the east lines of the said 4.95 acre tract, the said 22.029 acre tract and the east corporation line of the said village, N 0°-18'-50" W, a distance of 675.00 feet to a 5/8 inch iron rod set at the TRUE POINT OF BEGINNING.

THENCE, N 89°-43'-14" W, a distance of 214.31 feet to a 5/8 inch iron rod set.

THENCE, N 0°-18'-50" W, a distance of 1008.73 feet to a 5/8 inch iron rod set.

THENCE, with the south line of the Nevin Herschfeld 40.66 acre tract (O.R. 10, Pg. 238), N 89°-42'-41" E, a distance of 221.22 feet to a concrete corner post found.

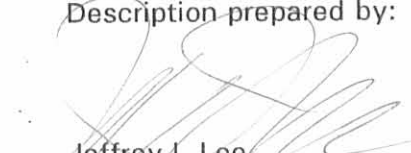
THENCE, with the west line of the Greenwood Cemetery (Vol. 123, Pg. 385 & Vol. 104, Pg. 45) the following two courses:

S 0°-39'-49" W, a distance of 405.72 feet to a 5/8 inch iron rod found.  
S 0°-18'-50" W, a distance of 605.20 feet to the point of beginning.

Containing 5.000 acres.

The basis for bearings is based upon the east line of the aforementioned 4.95 acre tract being N 0°-18'-50" W, and all other bearings are from angles and distances measured in a field survey by Lee Surveying and Mapping Company on May 6, 1994.

Description prepared by:

  
Jeffrey I. Lee  
Professional Surveyor 6359  
May 10, 1994

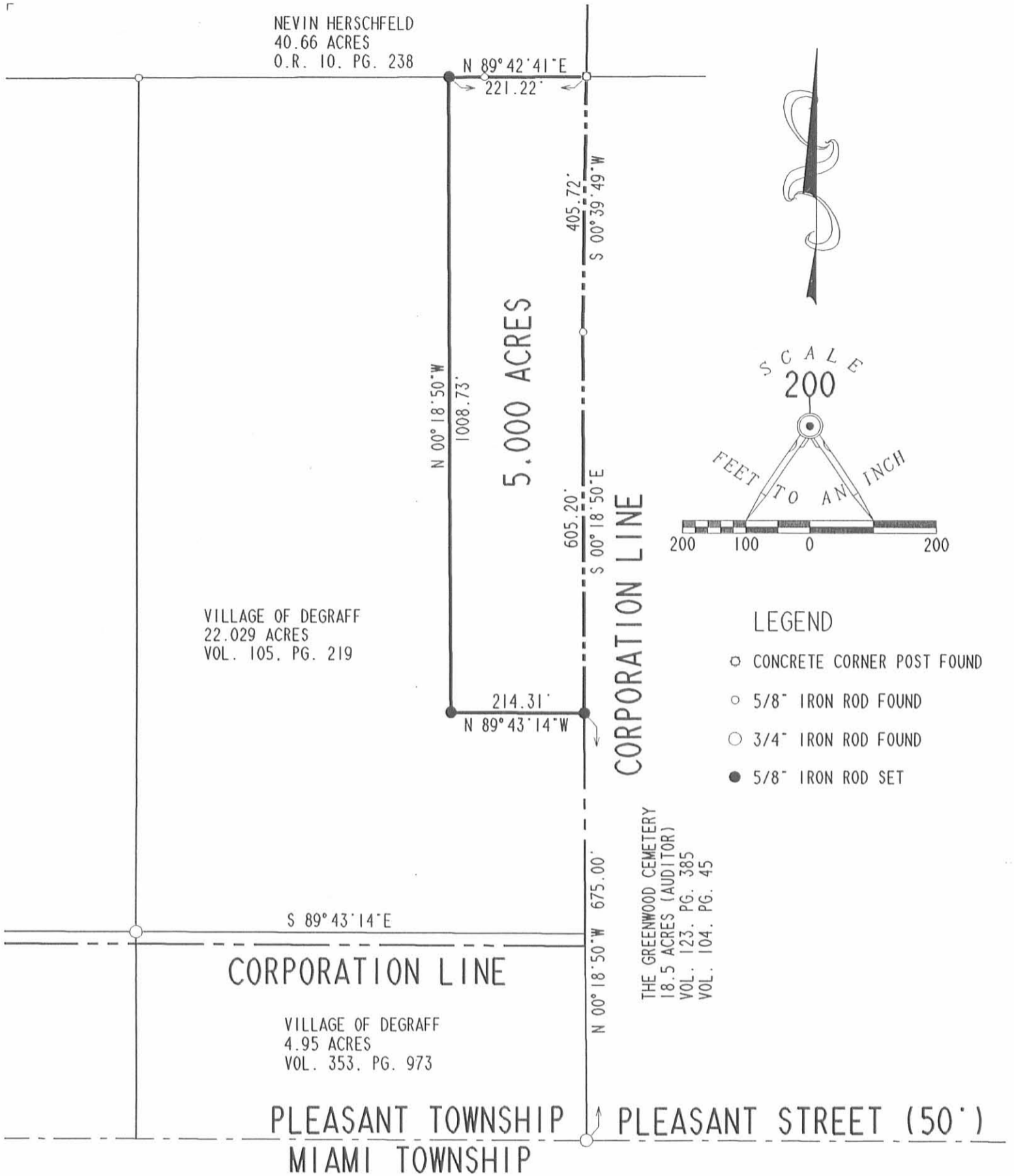


L-2179

ORIGINAL STAMP IN GREEN

INDEXED ON MAP  
8850 1D





SURVEY OF 5.000 ACRES OUT OF THE  
VILLAGE OF DEGRAFF  
22.029 ACRES  
OFFICIAL RECORD 105. PAGE 219  
SECTION 7. TOWN 2. RANGE 14. B.M.R.S.  
PLEASANT TOWNSHIP  
LOGAN COUNTY. OHIO

2 WORKING DAYS  
**BEFORE YOU DIG**  
CALL TOLL FREE **800-362-2764**

OHIO UTILITIES PROTECTION SERVICE.  
INDEXED ON MAP  
8850 1P



SURVEYED BY  
*[Signature]*  
JEFFREY I. LEE  
PROFESSIONAL SURVEYOR 6359  
MAY 6, 1994  
**LEE SURVEYING & MAPPING CO.**  
143 East Columbus Avenue  
BELLEFONTAINE, OHIO 43311  
(513) 593-7335  
D239 VILLDGRF L 2179-4

ORIGINAL STAMP IN GREEN

3-21-14

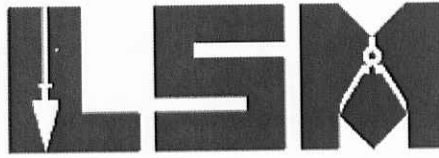
# Lee Surveying and Mapping Co., Inc.



**APPROVED**

Land Surveys • Topography • Subdivisions • Construction Layout

117 N. Madriver St.  
Bellefontaine OH 43311



Phone: (937) 593-7335  
Fax: (937) 593-7444  
surveys@lsminc.us

## THE VILLAGE OF DEGRAFF 3.824 ACRES

Lying in Section 7, Town 2, Range 14, Pleasant Township, Logan County, Ohio.

Being out of The Village of DeGraff 4.400 acre tract as deeded and described in Official Record 991, Page 903 of the Logan County Records of Deeds and being more particularly described as follows:

Commencing on a point on the intersection of the south line of Pleasant Township and the center-line of County Highway 24 at Station 0+00 (Logan County Engineer's Field Book 516, Page 63).

THENCE, with the south line of Pleasant Township, S 85°-21'-35"E, a distance of 245.54 feet to a point.

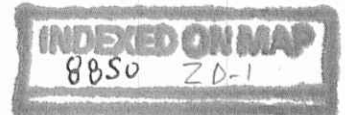
THENCE, with the east line extended and the east line of the Herschel A. Smith and Josefina A. Smith, Trustees, 0.43 acre tract (O.R. 938, Pg. 323), N 04°-41'-23"E, a distance of 207.39 feet to a point.

THENCE, with the west line of The Village of DeGraff, Ohio 4.95 acre tract (Vol. 353, Pg. 973), N 04°-41'-23"E, a distance of 125.00 feet to a point on a corner of the existing Village of DeGraff Corporation Line at the TRUE POINT OF BEGINNING.

THENCE, with a south line of the existing Village of DeGraff Corporation Line, N 85°-26'-46"W, a distance of 237.47 feet to a point.

THENCE, with the easterly lines of the Otilia Harrod 0.71 acre tract (Vol. 375, Pg. 382), the Carlos E. Recinos 0.50 acre tract (O.R. 366, Pg. 199), the Melissa R. Bell 0.50 acre tract (O.R. 1123, Pg. 611), the Franklin M. Wilkinson, Jr. 0.50 acre tract (O.R. 265, Pg. 490) and the Earl I. Dodds 0.50 acre tract (O.R. 97, Pg. 180), N 25°-43'-12"W, a distance of 523.30 feet to a point.

THENCE, with the south line of the remainder of the David A. Reames and Dixie D. Reames 20.968 acre tract (O.R. 116, Pg. 610), S 85°-20'-15"E, a distance of 500.58 feet to a point on a west line of the existing Village of DeGraff Corporation Line.



# Lee Surveying and Mapping Co., Inc.

Land Surveys • Topography • Subdivisions • Construction Layout

117 N. Madriver St.  
Bellefontaine OH 43311



Phone: (937) 593-7335  
Fax: (937) 593-7444  
surveys@lsminc.us

THENCE, with a west line of the existing Village of DeGraff Corporation Line and the west line of the Village of DeGraff original 22.029 acre tract (O.R. 105, Pg. 219), S 04°-27'-05"W, a distance of 426.60 feet to a point.

THENCE, with a west line of the existing Village of DeGraff Corporation Line and the west line of the aforesaid 4.95 acre tract, S 04°-41'-23"W, a distance of 24.39 feet to the point of beginning.

Containing 3.824 acres.

The basis for bearings is the south line of Pleasant Township, being S 85°-21'-35"E, and all other bearings are from angles and distances measured in a field survey by Lee Surveying and Mapping Co., Inc. on April 15, 2010.



ORIGINAL STAMP IN GREEN

Description prepared by:

A handwritten signature in black ink that reads 'William K. Bruce'.

William K. Bruce  
Professional Surveyor 7437  
March 17, 2014.

49380314

