

Survey Rd 46
 Restaked 50' from
 Sta 29+25 to 60+41.3

32+00 Hubs set

46+00 Hubs set

40+00 Hubs set

35+00 Hubs set

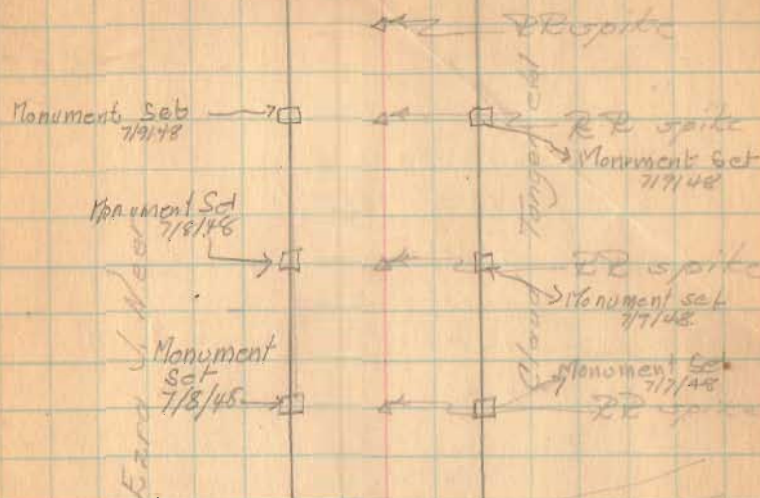
29+25 Hubs set

1308

See pg 7 for stationing
 on RR, etc.

Party: O. Keyser
 O. Shirk
 D. Mitchell

19 July 1997
 Monuments,
 7/7/48
 Cowman
 Hemminger



Monument Set
 7/8/48

29+25

17'-05' loc'd

RR spike set

Monument Set
 7/7/48

Plat 46 (cont'd) See pg 8
for existing angles.

PT 56+45.67	45.67	1°-02.2'	9°-55'	Hubs set for R/W
+25	25	1°-15 1/4'	8°-52 1/4'	
56+00	100	1°-15 1/4'	7°-37 1/2'	
+75	75	1°-13 1/4'	6°-22 1/4'	
+50	50	1°-15 1/4'	5°-07'	
+25	25	1°-15 1/4'	3°-51 1/4'	
55+00	52.0	1°-15 1/4'	2°-36 1/2'	
+75	27.0	1°-21 1/4'	1°-21 1/4'	

10.57+430

Hubs set for R/W Mon

Dist. Defl. Total Defl.

PT 53+97.81	97.81	1°-10 1/2'	10°-09 1/2'	Hubs set for R/W Mon
+75	75.0	1°-17'	8°-59'	
+50	50.0	1°-17'	7°-42'	
+25	25.0	1°-17'	6°-25'	
53+00	100.0	1°-17'	5°-08'	
+75	75.0	1°-17'	3°-51'	
+50	50.0	1°-17'	2°-34'	
+25	25.0	1°-17'	1°-17'	

20.52+00

Hubs set for R/W Mon

April 2, 1948
Warrenton

Monument Set 7/12/48

Monument Set 7/12/48
PT 56+45.67

L = 19°-50'
D = 10°-02'
B = 574.99'
T = 100.00'
L = 197.67'
E = 8.68'

PT 53+30.12
Iron set

David B. Tanger

Monument Set 7/11/48

Extra J. Moor

Monument Set 7/12/48
Flush with the Ground

53+97.81

Robert G. Milroy

DC 33+48.00
Monument Set 7/9/48

Clard Tanger

Mon. Set 7/12/48
Flush with Ground

L = 20°-19'

D = 10°-16'

B = 552.10'

T = 100.00'

L = 197.89'

E = 8.88'

Monument Set 7/9/48

DC 33+00.0

Monument Set 7/9/48

Monuments Cowman + Hemming

Red 46 (cont'd)

50+100 Hubs set for R/W Mon.

72+100 Hubs set for R/W Mon.

72+273 Stake found. Hubs set for R/W Mon.

68+25.5

found 11 July '66
66+42.0 both 1" spires
both are bent at
top. SW

66+42.0 Iron set - Hubs set for R/W Mon.

61+00 Hubs set for R/W monuments

PT 56+49.67 Hubs set for R/W Mon.

S.H. 234

Route 47

80+11.5
RR spike set

72

Monument Set 7/12/48

Mon. Set 7/12/48

RR spike

Monument Set 7/12/48

RR spike
Mon. Set

Monument Set 7/12/48

Monument Set 7/12/48

72+273

Stake found
0°-08 1/2' Right

8' Elm

66+28.5
Iron set

3°-06' Right

Monument Set 7/12/48

Monument Set 7/12/48

66+42.0

Iron set

2°-50' Left
(3°-40' Right)

Monument Set 7/12/48

Monument Set 7/12/48

RR spike set

Mon. Set 7/12/48

Mon. Set 7/12/48

David B. Tanager

7-20-36

G.A.I.
J.H.I.
W. Hudson
R Cockerill

Road 21

Road 13 to Road 91

SEC SURVEYORS BOOK 514

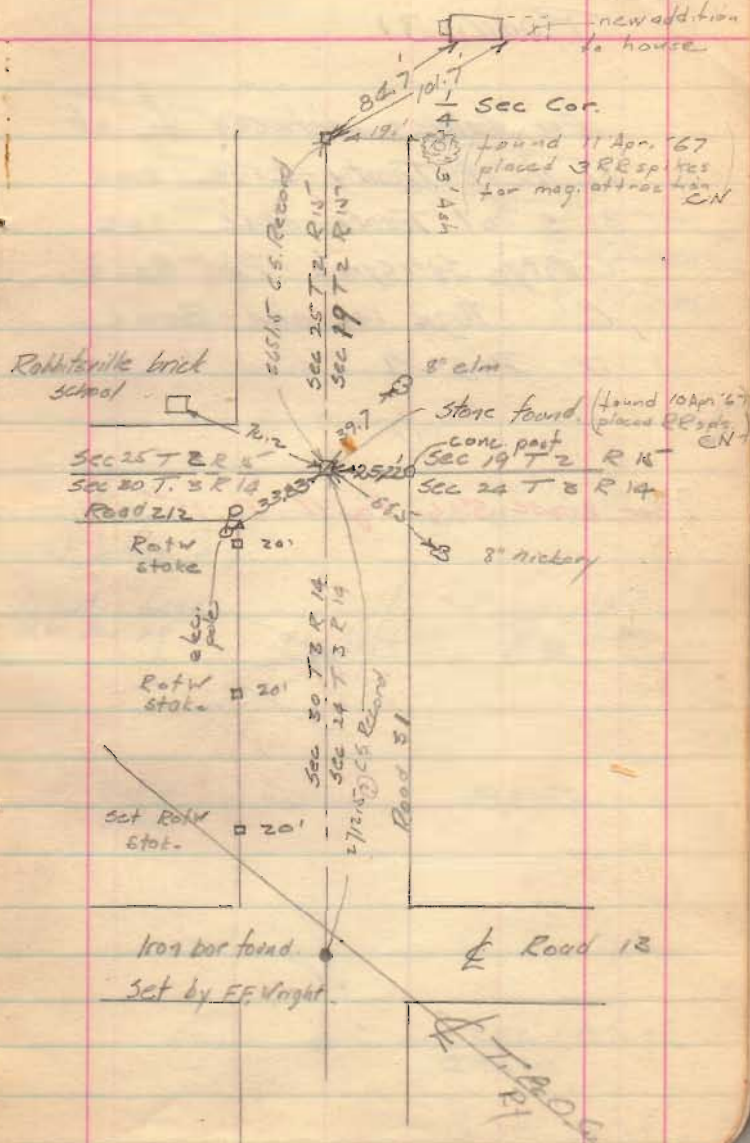
Page 12-13-14-15

INDEXED ON MAP

1308

1/2 story frame house

new addition to house



Road. 31

For distance between $\frac{1}{4}$ of
31 N. of Treaty Line and
31 S of Treaty Line see
County Surveyor's Plot Book
C Page 140 and Book
D Page 1

See BOOK 516 Page 11 TO 15

