

Road 56 Harrison & Lake

40' { Garfield Ave. To Road 57
Vol. 8 Page 259
Vol. 9 Page 51
June 1849

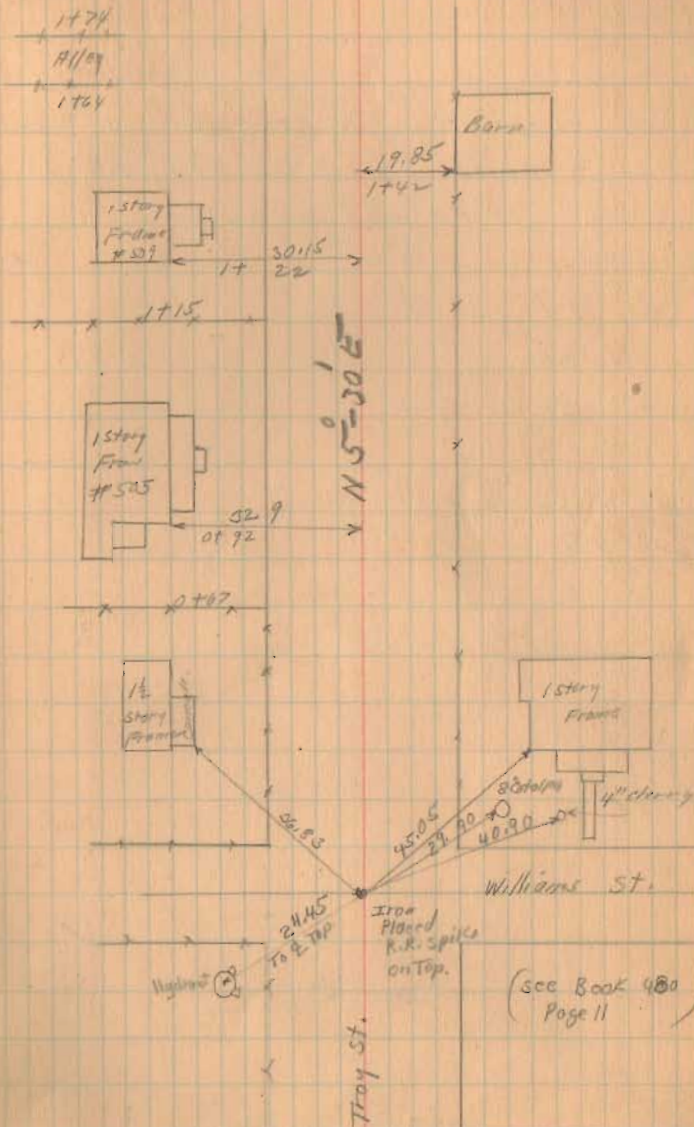
Stakes Placed 20' from $\frac{1}{2}$ for a
40' Road.

Stakes Placed 2-4-6-8-10-12-14 etc.

1364
INDEXED ON MAP

April - 19 - 1851
Fine day
Wright
McKinnon
out

5



Road. 56.

Monuments (Right of Way Posts)
Set. April 22-1932 (P.M. only)
By M^r Kirahan and Duff

Sta. 14

20

24

" 32

" 36

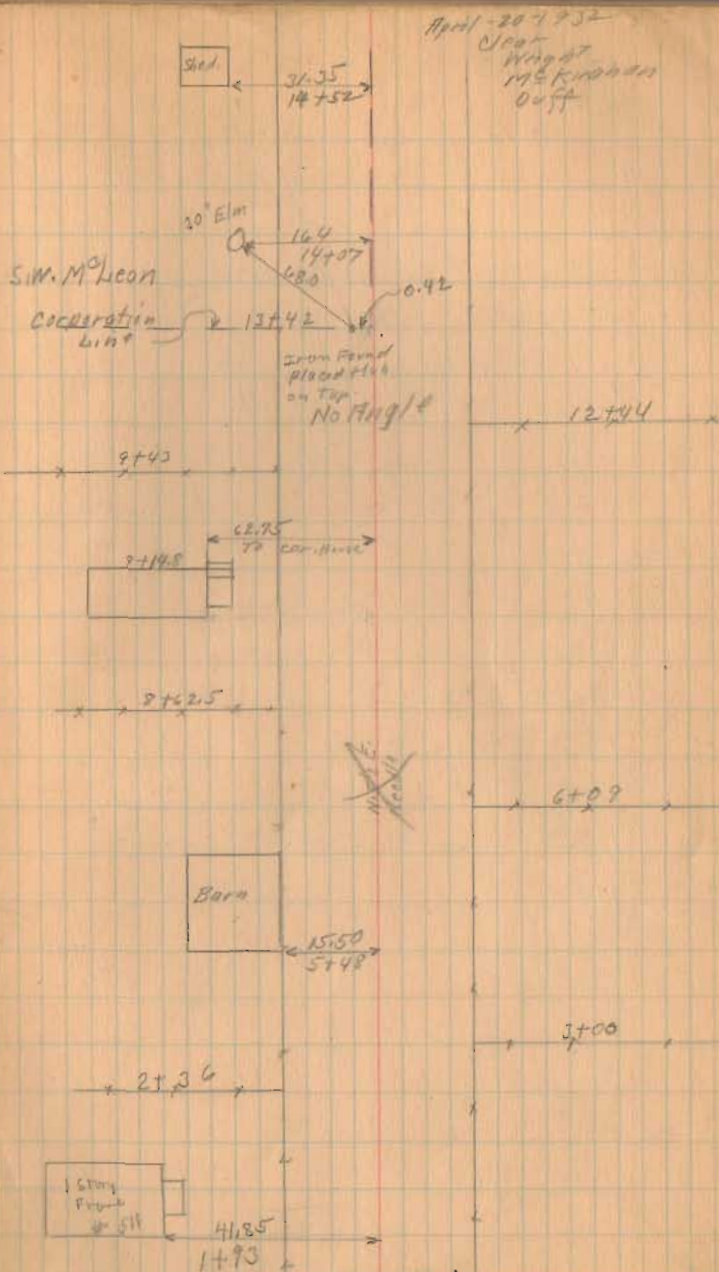
" 46

" 56

West side only

Both sides

1364
INDEXED ON MAP



Road. 56

Monuments (R/W Posts)

Set April 25, 1932

By McKirahan & Duff

64

72

78

86

88

92

94

100

106

112

118

120

126

Both sides

Both sides set

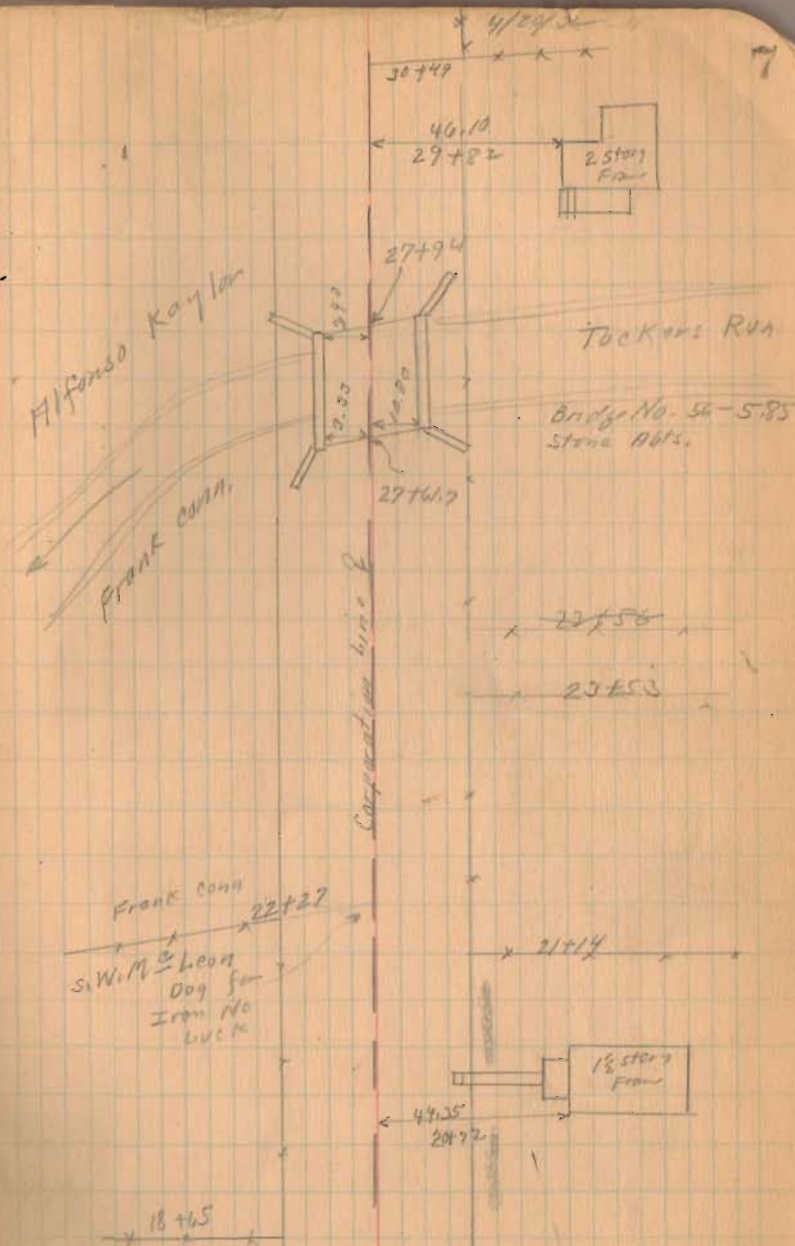
May - 12 - 1932

McKirahan

Duff.

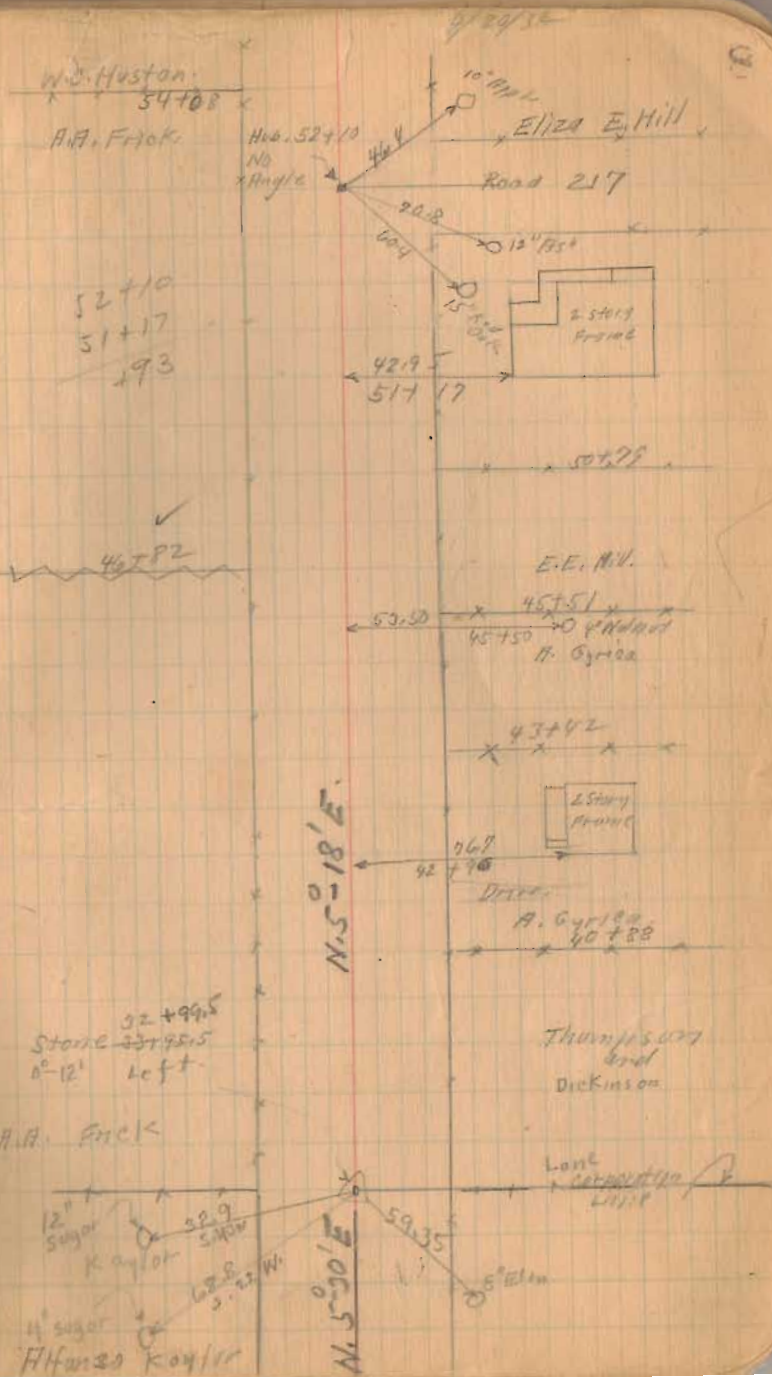
1364

INDEXED BY MAR



Road 56

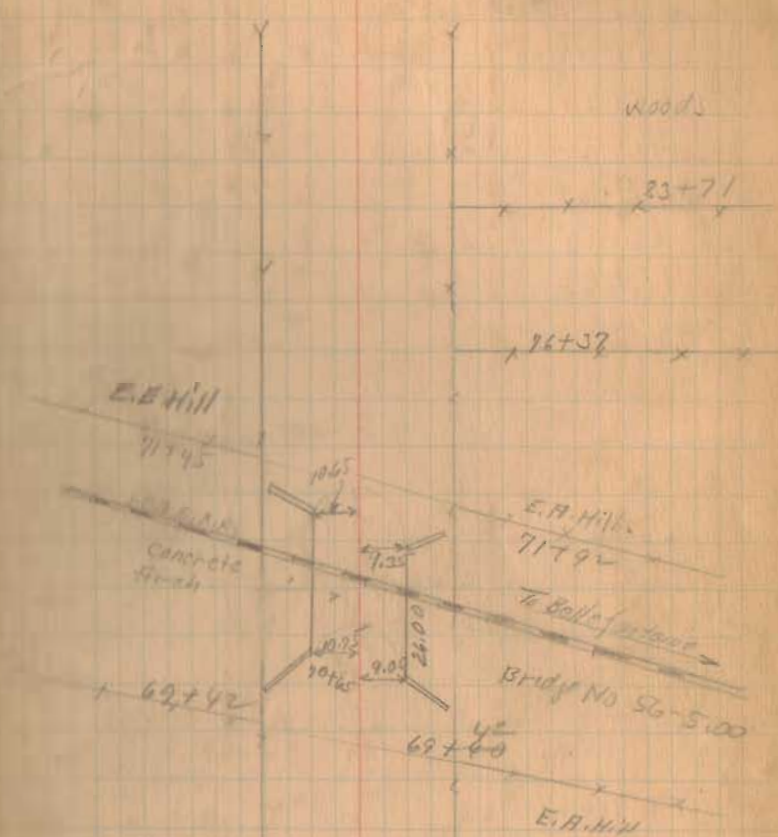
1364
INDEXED ON MAP



Road 56

4/20/52

9



Abstract

68121

W. H. H. H.

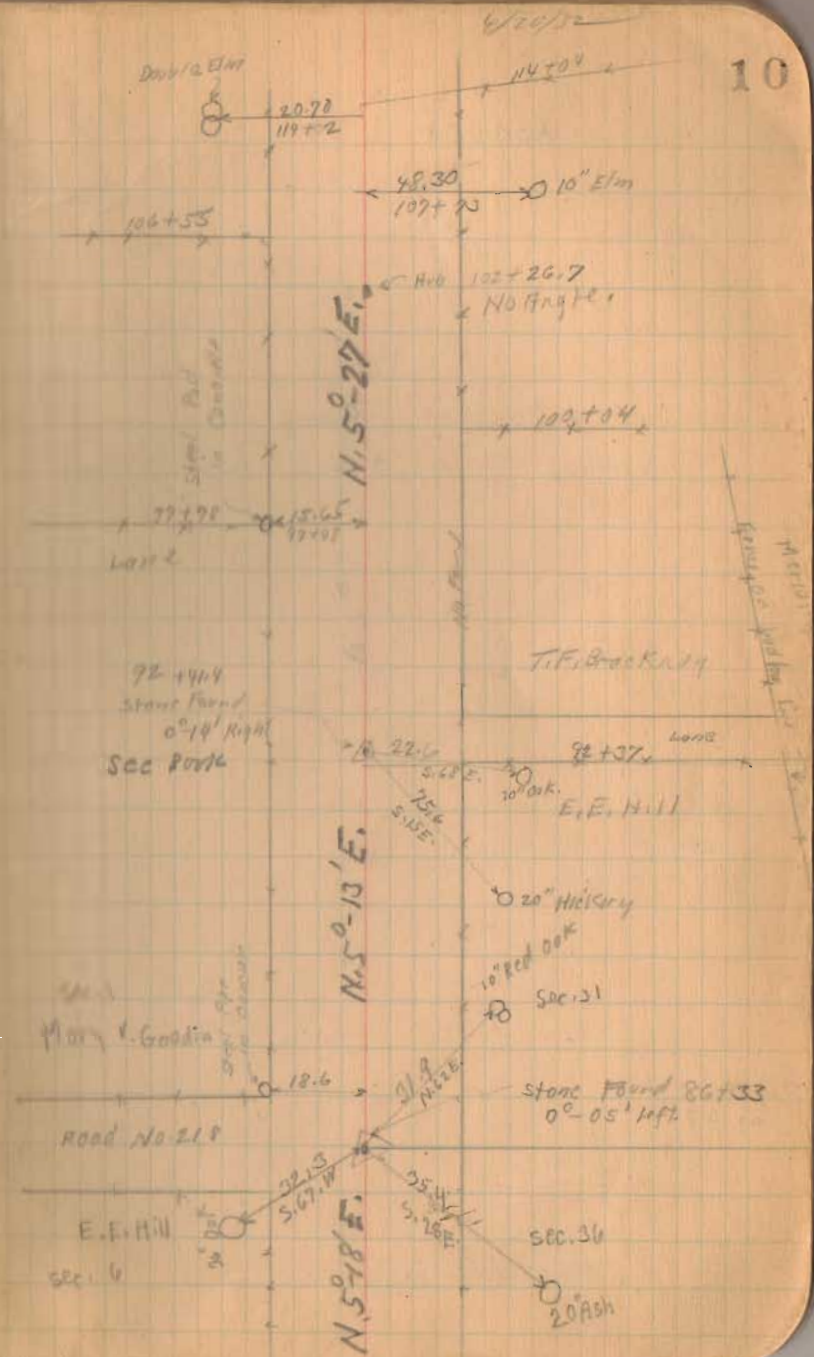
lane 10+51

INDEXED ON MAP
1364

Road 50

2088
22

(1264)
INDEXED ON MAP



Rood. 56

(See McKinnon survey for
Harris. Book 390 H Page 164)

$$\begin{array}{r} 120+16.5 \\ 119+63.4 \\ \hline 551 \end{array}$$

$$\begin{array}{r} 120+56 \\ 119+63.4 \\ \hline 692.6 \end{array}$$

1364
INDEXED ON MAP

April-21-1932

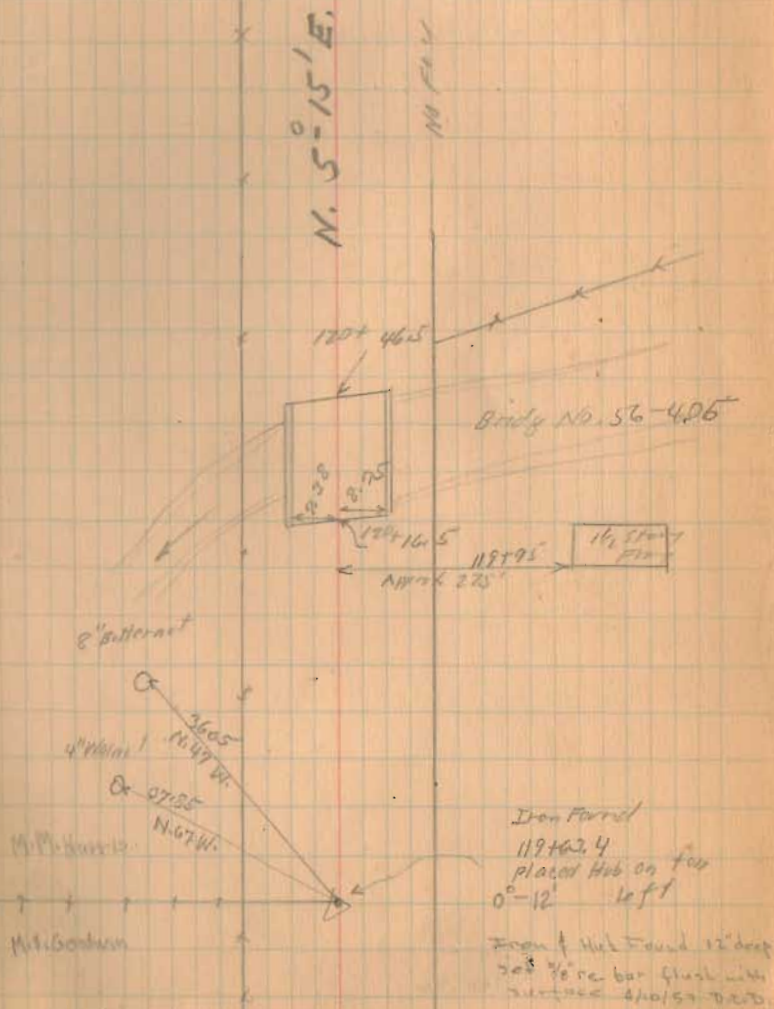
clear

Wright

M. McKinnon

diff.

11



R00056

Sec. 10-16'

10163
20
203260

58.0
149.1
207.1

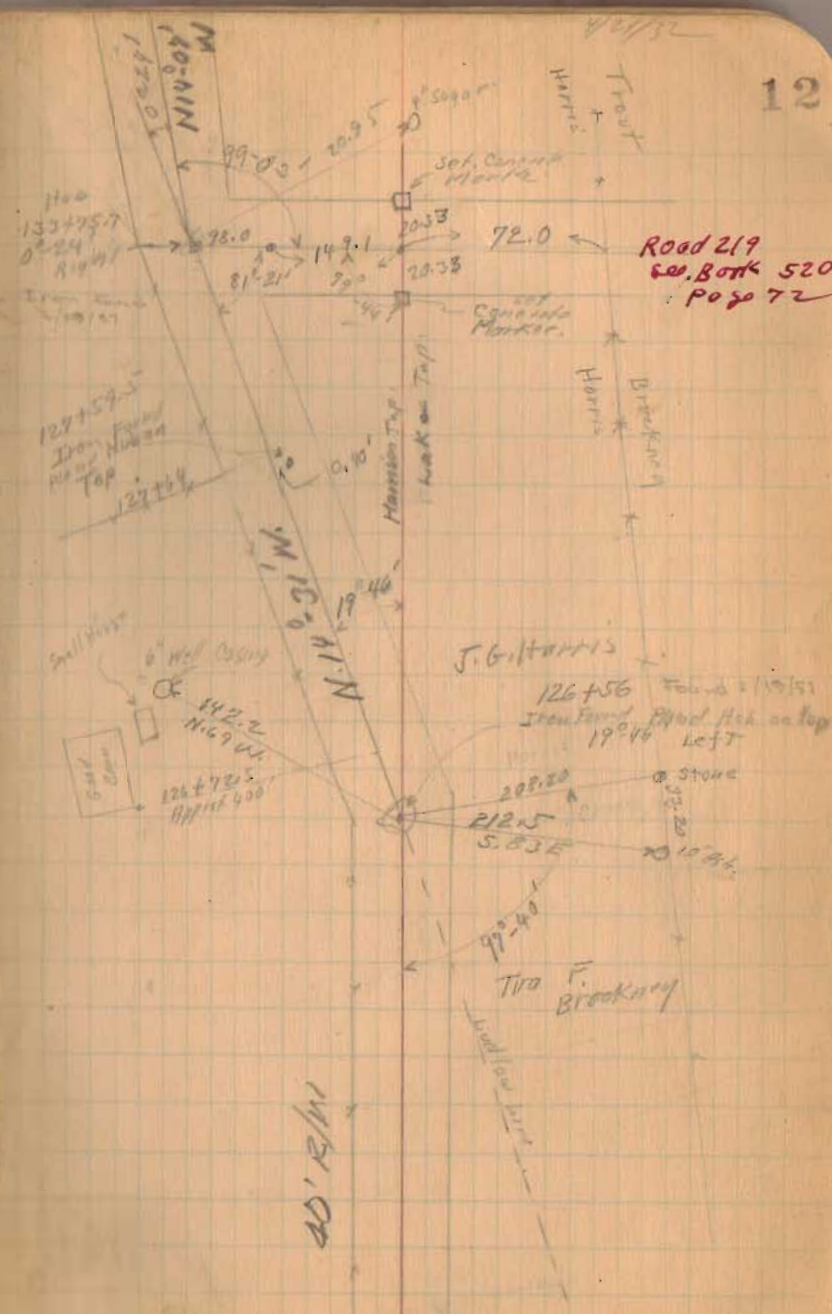
139+75.7
125+58.7
265.4

127+62
24+12
108

149.1
98.0
247.1

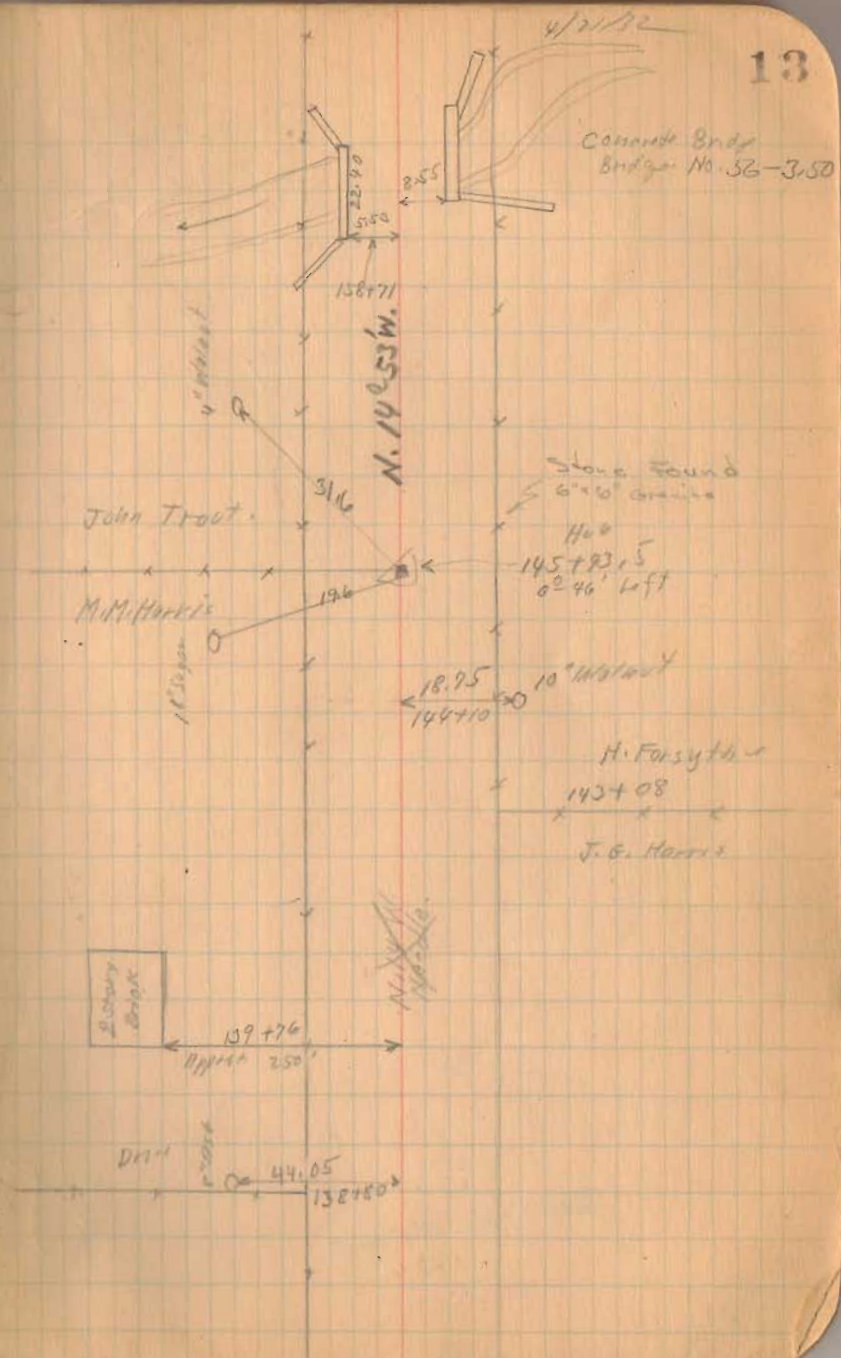
1364

INDEXED ON MAP



Road 56

1364
INDEXED ON MAP



Road 56

Road 56 Continued
on Page 47

1364
INDEXED ON MAP

9/21/37
Length 18122 Feet
Length 3.4222 Miles

