

Road 57

Harrison Twp - McArthur Twp

60' - Road. Commissioner's Journal 5 Page 4-5

(1836)

60' Road " " 6-79

Placed stakes for 50' road.

1-3-7-9-11 etc

Note: 1" # bar set on back tan

0+00 - 23+65 because of US 33

Relocation used 119.5 North of R/W Mass

on # Old US 33 to set up west end of tan.

See Book 479 Page 32-33

1726

INDEXED ON MAP

168+00

211.130

Concrete

Route 33

03

P.T. 162+96.92

July-16-1936

Clear-95°

F. Wright

G. Wilgus

T. Montgomery

Rub Roberts

Max James

25.35

21+15
710/45

91.0
15" Hickory
15+25

18+15
1" # bar set
7/9/35

Twp.

No Fence

6+12

24.0
5+00

McArthur

O.G. Hashine

26.5
3+00

28.6
1+00

86

98.0
2+13

7.35

1/2 APC
Grosville
Thurs Line

119.5
Stone
brick
on top

Dennis McKeenan

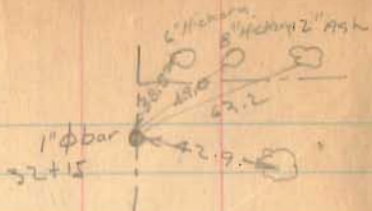
Harrison Twp.

p.c. 100+16.92

150+00
9/11/1936
Plot L-27

2-25-48
T=140103
E. 1.171

Road 57



29+15 1" # bar set 7/8/65

Note: 1" # bar set on Fwd tan because of U.S. 33 Relocation

23+65

23+65 Stone Fd 7/8/65

$A = 0^{\circ} 36' \text{ Rt}$

1726

INDEXED ON MAP

21+15 1" # bar set 7/8/65
see pg 65

7-16-36 .66

Maggie Hellman

31700

31685

Alice Kelley

1" # bar set 7/8/65

29700

12.4

27700

16.0

25700

No Fence

550.0

Alice Keller

247

24+15.3

75.10

247

45.8

18.0

23+07

1.C.R.E. Elec. R.R.

23+65

23+65

23+65

23+65

23+65

23+65

23+65

23+65

23+65

23+65

23+65

23+65

23+65

23+65

23+65

23+65

23+65

23+65

23+65

23+65

23+65

23+65

$0^{\circ} 36' \text{ Right}$
Fd July 8, 1965
 $L = 0^{\circ} 20' \text{ Rt}$

No Fence

19.0

23700

Dennis M^r Kinnon

Moose

No Fence

12" Oak

Alice Keller

15" Hickory

57.9

29700

10.6

10.6

10.6

10.6

10.6

10.6

10.6

10.6

10.6

10.6

10.6

10.6

10.6

10.6

10.6

10.6

10.6

10.6

10.6

10.6

10.6

10.6

10.6

10.6

10.6

10.6

10.6

10.6

10.6

10.6

10.6

10.6

10.6

10.6

10.6

10.6

10.6

10.6

Road 57

22+24.7
13+08.5

8+76.2

37+13.5
29+65

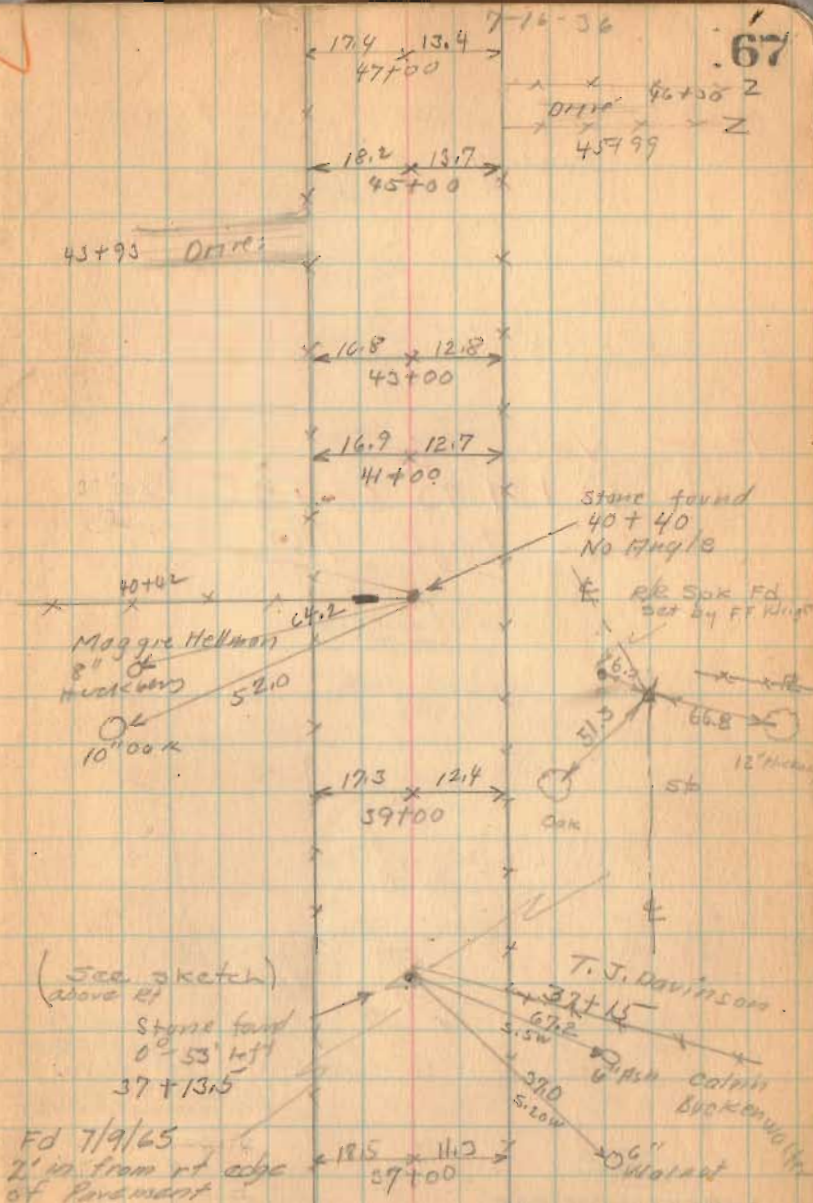
1348.5

40 A. on East

1726

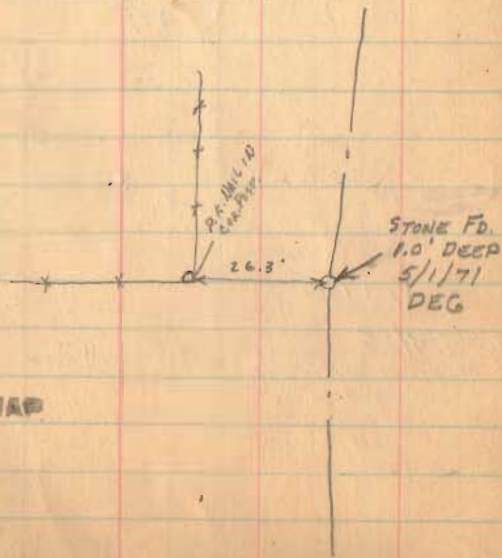
INDEXED ON MAP

67



Road 57

FOR NEW &
sta. 30+21 TO 68+25
see Page 76

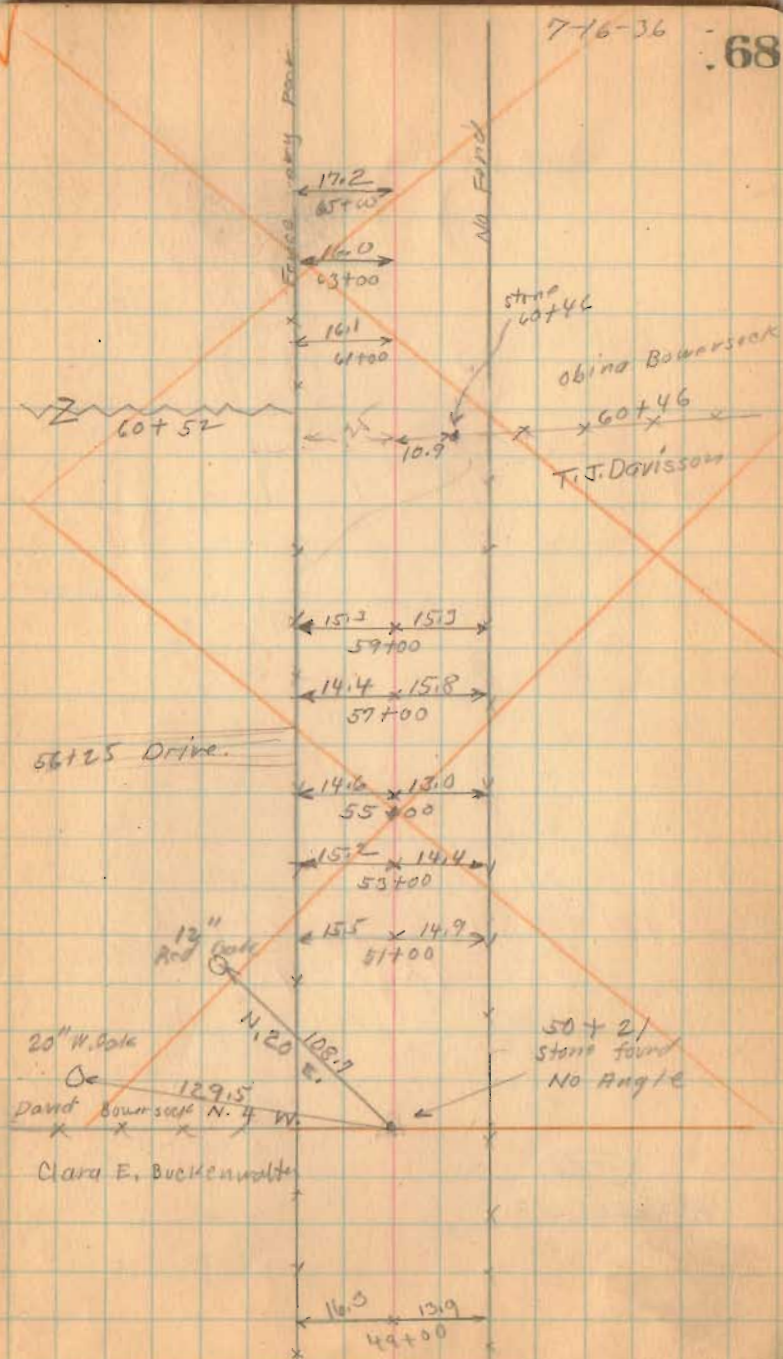


1726

INDEXED ON MAP

7-16-36

68



Road 57

7-16-36

69

10" Hickory
Board St. 17p 47

22.3
50.0

Isabell
Wallace

Road 56

10" Pass
Sta. Pass
Board St.
Page 47

David Bowersox

68+08
Place
Iron

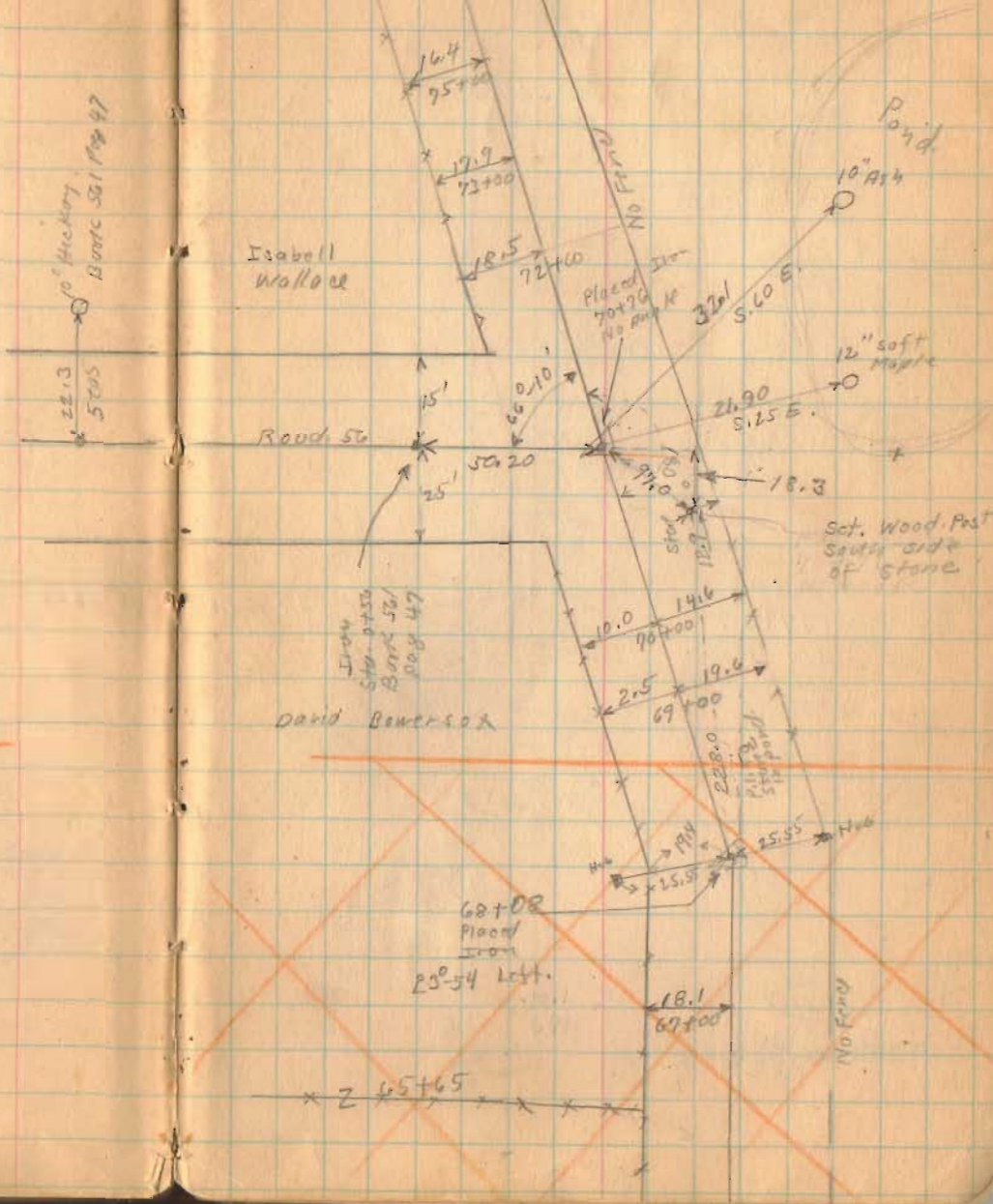
23-54 Left.

2 45+65

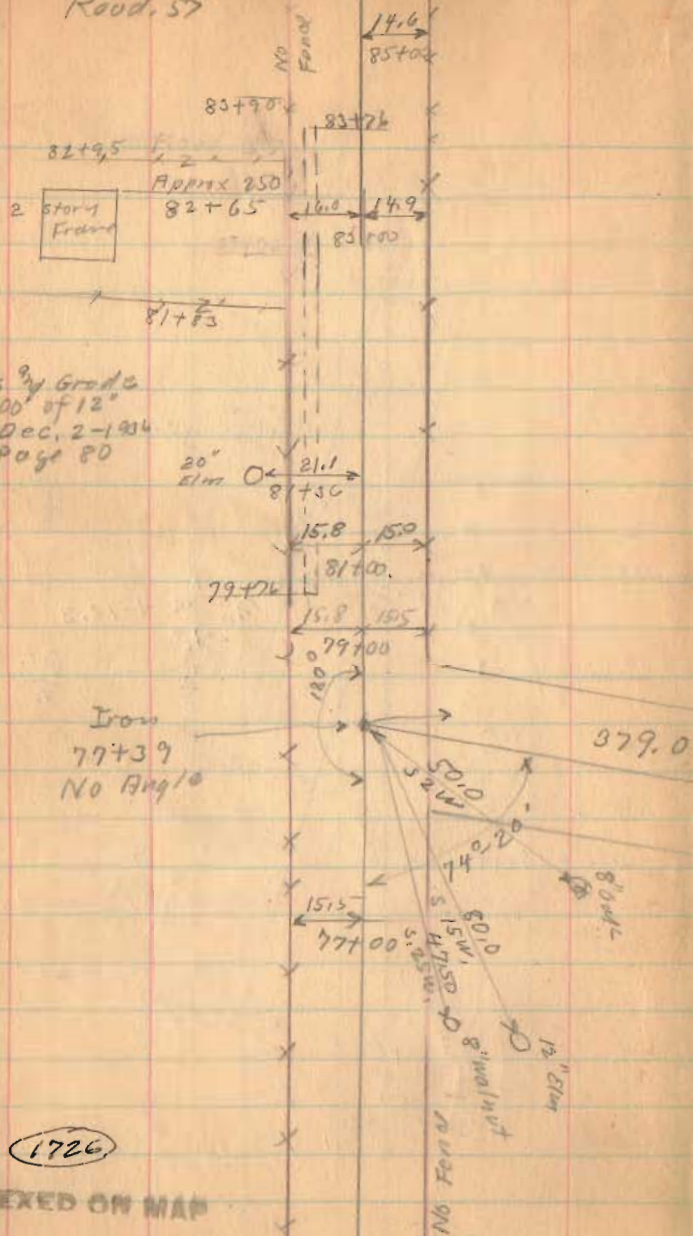
For New &
Sta. 50+21 To 68+25
See Page 76

1726

INDEXED ON MAP

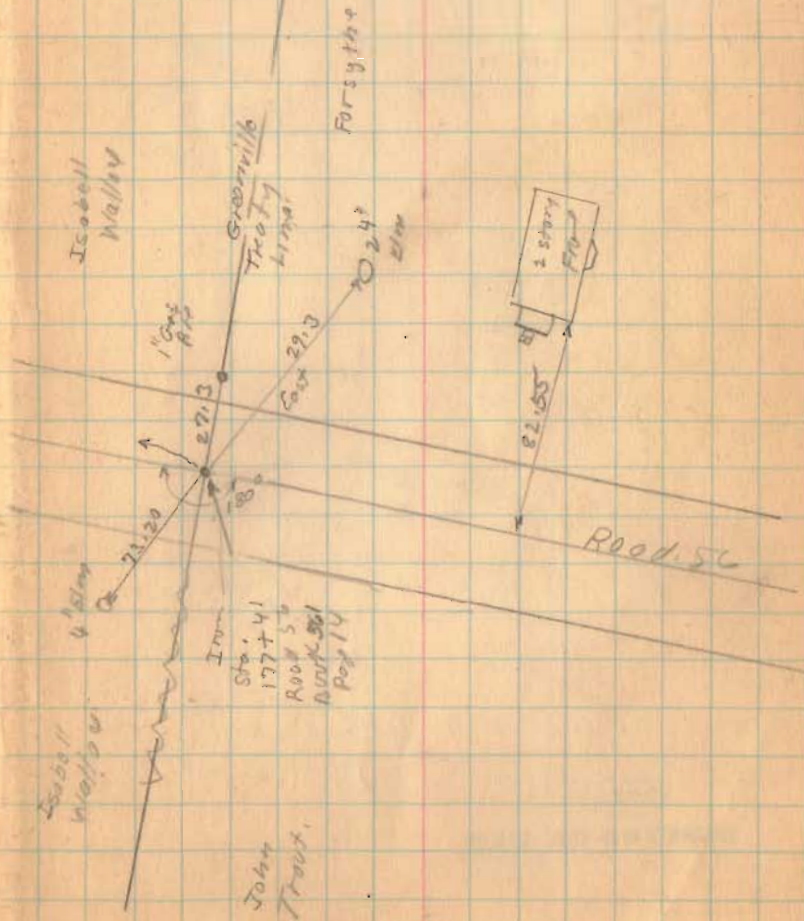


Road, 57



7-16-36

70



Road 57

(1726)

INDEXED ON MAP

July 17 1936

Clark

F. Wright

J. Montgomery

G. Wilgus

Max James

Joe Roberts

71

Wilson Downs
92+87
I. Wallow

Red Granite
stone with
cross

Placed Iron
87+58
No flag

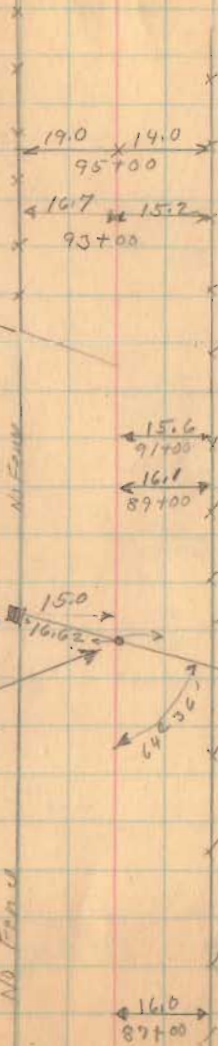
Madison
Kemp

796.0

I. Wallow

Granite
T. Forstner

A Forstner

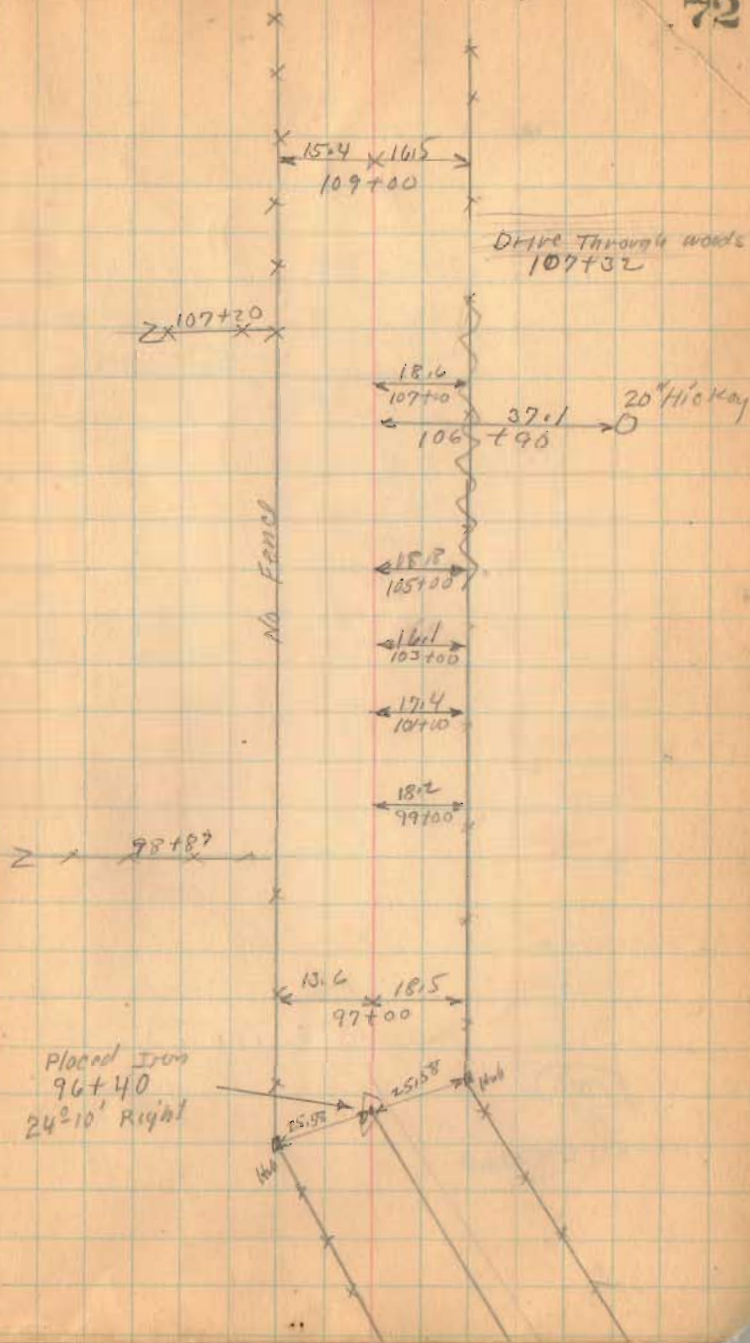


Band 157

(1726)
INDEXED ON MAP

7-17-36

72



Road 57

No stakes placed
Sta 135+08 to Sta 167+47

1726

INDEXED ON MAP

7-17-36

74

W.M. Mitchell

Road 49
Patterson Pike

Placed Hub
135+08

Oliver Allebaugh

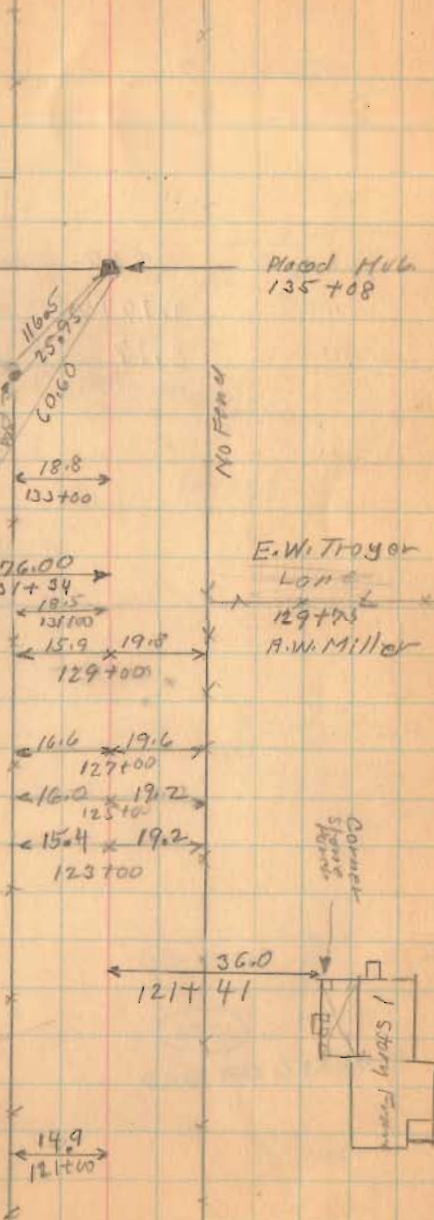
1/2 Store
Frame

Barn
Concrete
Ftd.

E. W. Troyer
LON
129+03
A. W. Miller

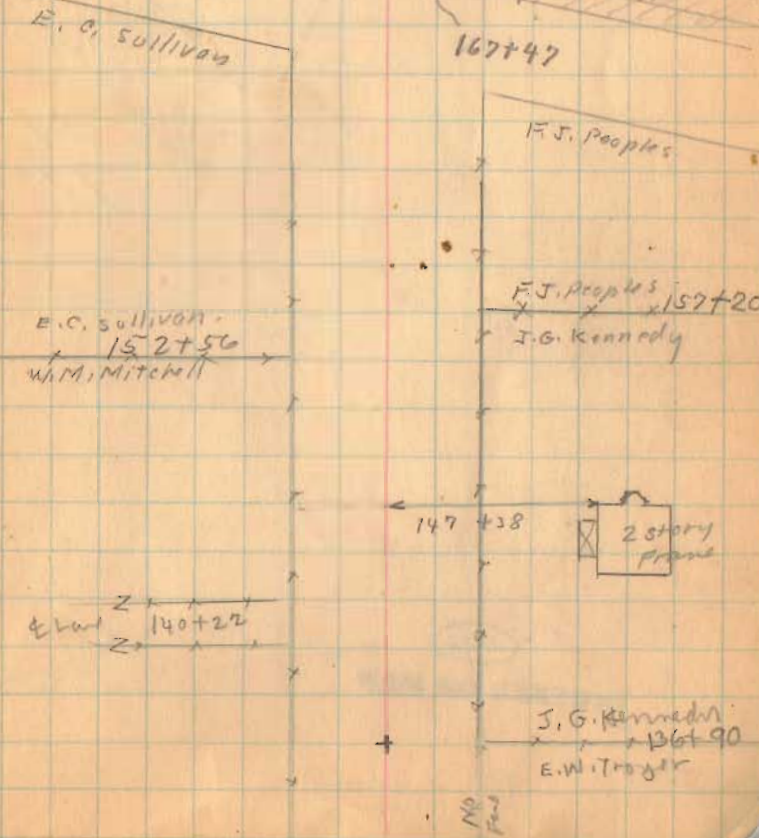
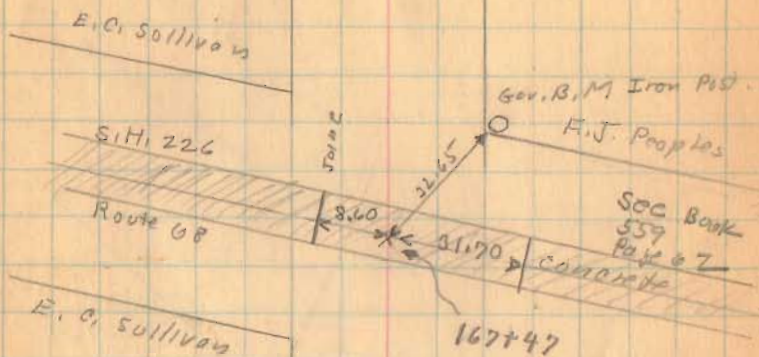
Concrete
Stairs

1 Store
Frame



Road 57

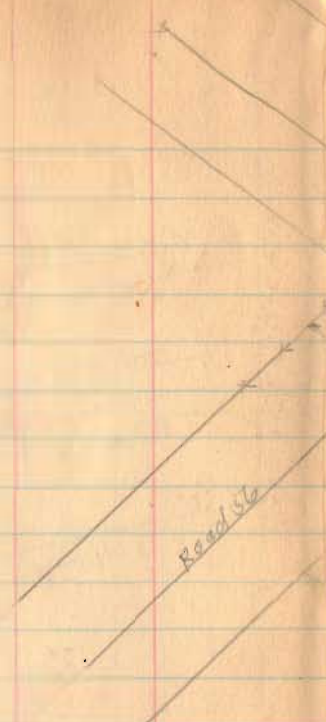
Length 16,747 Feet
 " 3.17177 Miles
 " 3.17 "



1726

INDEXED ON MAP

Road 57



✓
 Drive Post 69
 Stone at Sta 70+76
 New Sta 70+73.5

Sept. 12-1936
 cloudy
 F. Wright
 G. Wright
 Max James,
 Joe Roberts,

Road 56

Plaid Iron
 22°-28 left
 68+25

Iron
 (Pl. Page 69)

Stone
 60+46
 22°02 left

57.1
 N. 62 W.
 100' Roberts

South

Oblio Borel
 T.W. Dawns
 5/16
 6' oak

50+21
 Stone
 0°-36' Right

1726

INDEXED ON MAP