

FB 702

C.H. No. 11
LAKE TWP.
60' R/W

STA 3165.25 1" IRON PIPE 1.15' RT. OF C

SEE F.B. # 561 p.p. 22

STA 3135.25 - C.H. No. 18

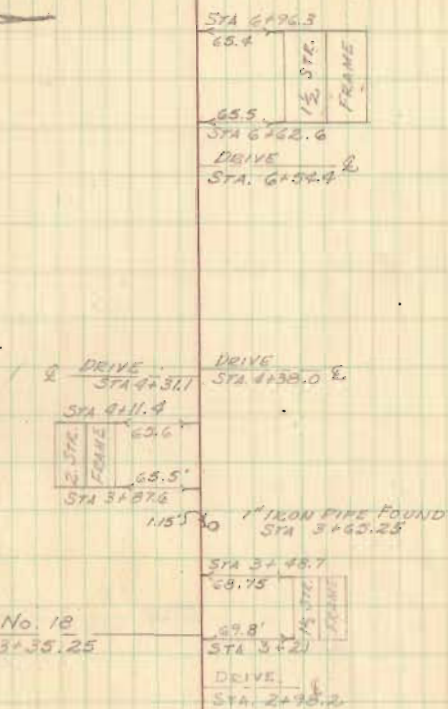
STA 0100 BRASS PLATE 1/4 SECTION LINE UNDER
W. R.R. BRIDGE

SEE F.B. 660 p.p. 22

JULY 22, 1939
HOT & HUMID

D. DOBSON
D. GILBERT
D. TEVIS
D. SMITH

5



INDEXED ON MAP

FB 702

C.H. No. 11
LAKE TWP.
60' R/W

7/22/59

P



STA 12+69.9 FENCE RT.

← 24.1
FENCE
STA. 12+69.9 → R

STA 9+74.4 12' FENCE LEFT

← FENCE
STA. 9+74.4 →
STEEL POST 19.8

Wood Post
← 20.8
FENCE
DRIVE
STA 8+90.8 →
STA 8+90.8

← 108.6
STA. 8+59.7
108.6
← 103.2
STA 8+34.2 →
R. SIDE FENCE

3458

INDEXED ON MAP

STA 7+61.6 R FENCE RT.

← 30.2
FENCE
STA 7+61.6 → R

FB 702

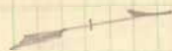
C.H. No. 11
LAKE TWP.
#0 R/W

STA 17154.3 R.R. SPIKE SET NO ANGLE

7/22/59

7

FENCE
STA 21+59.5 22.5
IRON
POST



R.R. SPIKE SET ON E
STA 17+54.3
NO ANGLE

DRIVE
STA. 16+90 2

DRIVE
STA. 15+30.8 2
STA. 15+11.9
63.4'

63.6'
STA. 14+88.2

FENCE
22.9 STA. 14+56.0

3458

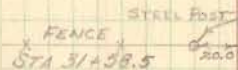
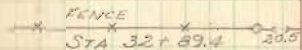
INDEXED ON MAP

FB 702

C.H No. 11
LAKE TWP.
60' R/W

7/22/09

8



STA. 29+76.6 - R.R. SPIKE SET NO ANGLE

4-3-14

R.R. SPIKE SET ON E
STA. 29+76.6
NO ANGLE

3-3-14

STA 26+01.95 - RESURVEY MONUMENT, TWP. E

SECTION LINE - ANGLE 0°-35 1/2 RT.

SEE F.B. 660 pp. 50

HARRISON

TWP.

3458

INDEXED ON MAP

E C.H No 216

LAKE
33-4-14

R.R. SPIKE FOUND - E
STA. 26+01.95
0°-35 1/2 RT. TWP.
(1°-10") 34-3-14

FB 702

C. H. No 11
HARRISON TWP.
60' R/W

STA 52+70.5 - STONE FOUND ABOUT 2' DEEP -
1/4 SECTION LINE - HUB SET ON TOP
ANGLE $0^{\circ}-09\frac{1}{2}'$ RT.

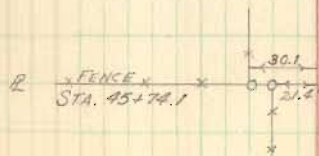
STA 45+74.1 R FENCE LEFT

JULY 23, 1959
HOT & HUMID

D. DODSON
D. GILBERT
D. TEVIS
D. SMITH



STONE FOUND
HUB SET ON TOP
STA. 52+70.5
ANGLE $0^{\circ}-09\frac{1}{2}'$ RT.
($0^{\circ}-19'$)



3458

INDEXED ON MAP

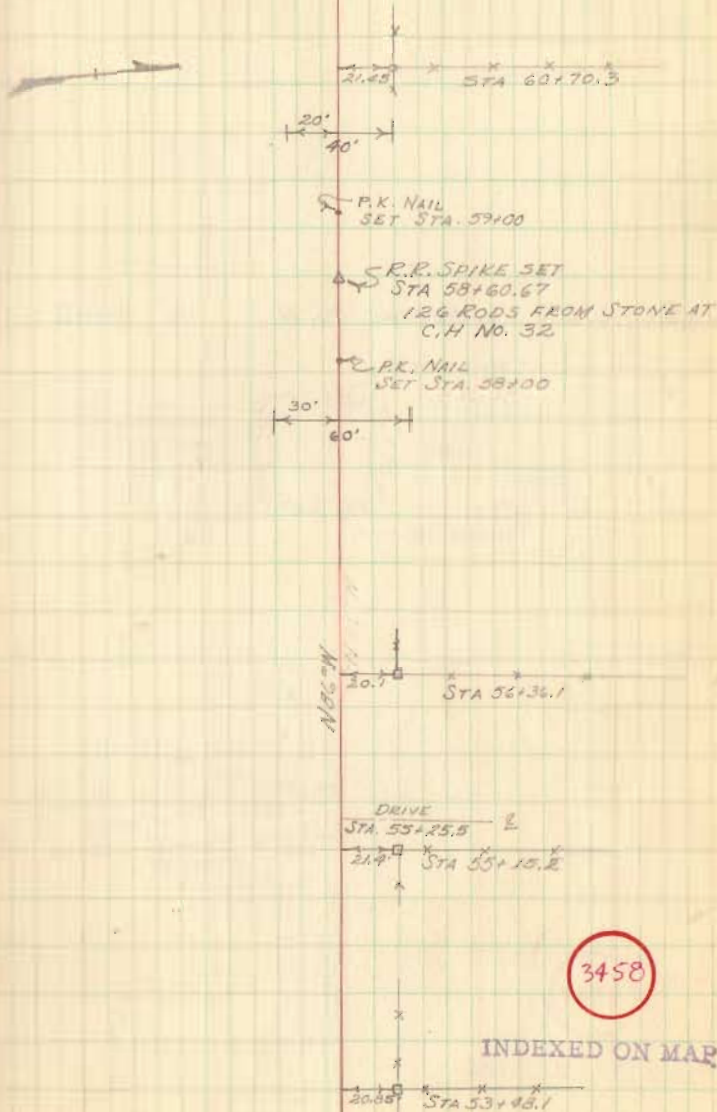
FB 702

C.H. No. 11
HARRISON TWP.
60' R/W

STA 58+60.67 R.R. SPIKE SET TO DENOTE POINT
AT WHICH R/W CHANGES FROM 60' WIDE
TO 40' WIDE - NO ANGLE - 126 RODS
FROM STONE AT INTERSECTION C.H. #32

7/23/59

10



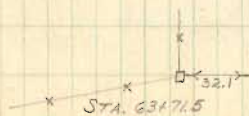
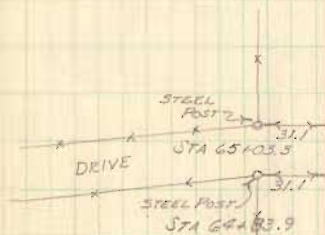
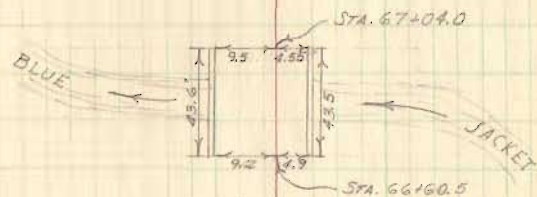
FB 702

C.H No. 11
HARRISON TWP.
40' R/W

STA 66+60.5 Co. BRIDGE No. 11-F 16' METAL

7/23/58

11



3458

INDEXED ON MAP

FB 702

C.H. No 11
HARRISON TWP.
40' R/W

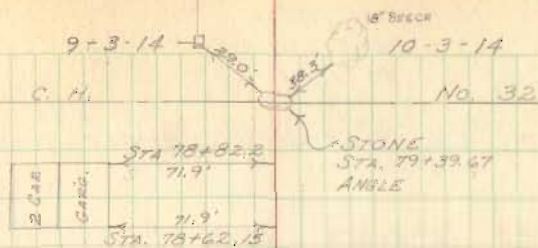
STA. 79+39.67 - STONE SECTION LINE
INTERSECTION WITH C.H. No. 32
SEE E.B. # 561 - pp. 68

STA 72+14.1 R. FENCE LT.

STA 70+02.3 R. FENCE LT.

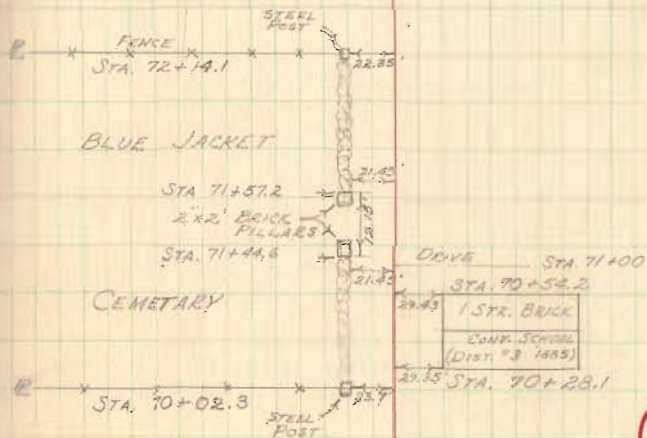
7/23/59

12



3-3-14

4-3-14



3458

INDEXED ON MAP

FB 702

C.H. No. 11
HARRISON TWP.
40' R/W.

STA 85+00 R.R. SPIKE SET - NO ANGLE

STA. 84+51.9 R. FENCE LEFT

STA. 81+54.5 R. FENCE RT.

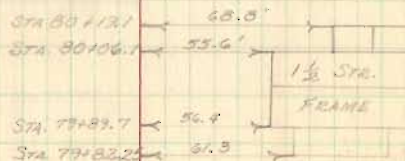
13

R.R. SPIKE SET
STA 85+00
NO ANGLE

R. FENCE
STA. 84+51.9

18.3 STA 81+54.5 R.

19.5 STA. 80+37.2



3458

INDEXED ON MAP

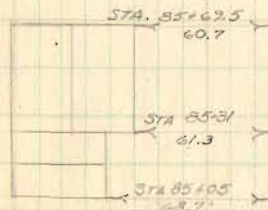
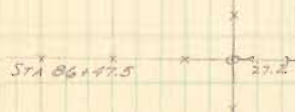
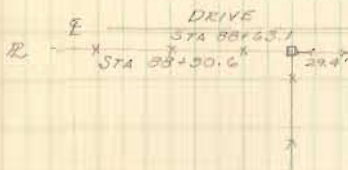
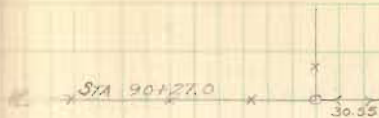
FB 702

C.H. No 11
HARRISON TWP.
40' R/W

STA. 90+27.0 R FENCE LEFT

STA 88+50.6 R FENCE LEFT

14



3458

INDEXED ON MAP

FB 702

C.H. No 11
HARRISON TWP
40' R/W

STA 98+99.27 1/2" IRON PIN FOUND - 0.13' LT. OF E
R FENCE RT.

STA 96+64.4 R FENCE RT.

STA 92+87.1 R FENCE RT.

STA 92+66.75 3/4" IRON FOUND 0.10' LT. OF E
INTERSECTION C.H. No 204.

15

1/2" IRON PIN
STA 98+99.27
0.13' LT. OF E



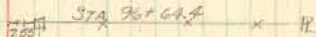
STA 98+97.6

DRIVE




STA 96+95.2

2.50' STA 96+64.4 x R




DRIVE
STA. 94+18.5



STA. 92+87.1

C.H. No. 204

3/4" IRON FOUND
STA. 92+66.75
0.10' LT.



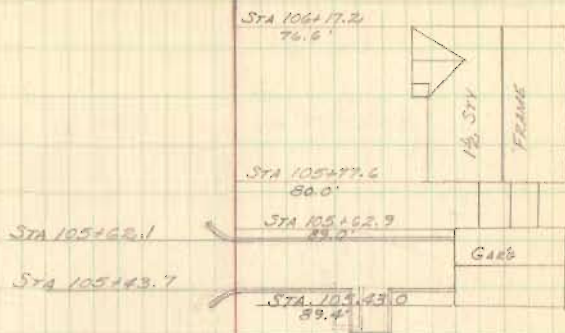
3458

INDEXED ON MAP

FB 702

C.H. No 11
HARRISON TWP.
40' R/W

16



4.3' STA. 104+63.0 R

DRIVE
STA. 104+20.4 ASPHALT

5.0' STA. 101+50.5 R

DRIVE
STA. 100+33.4

3458

INDEXED ON MAP

FB 702

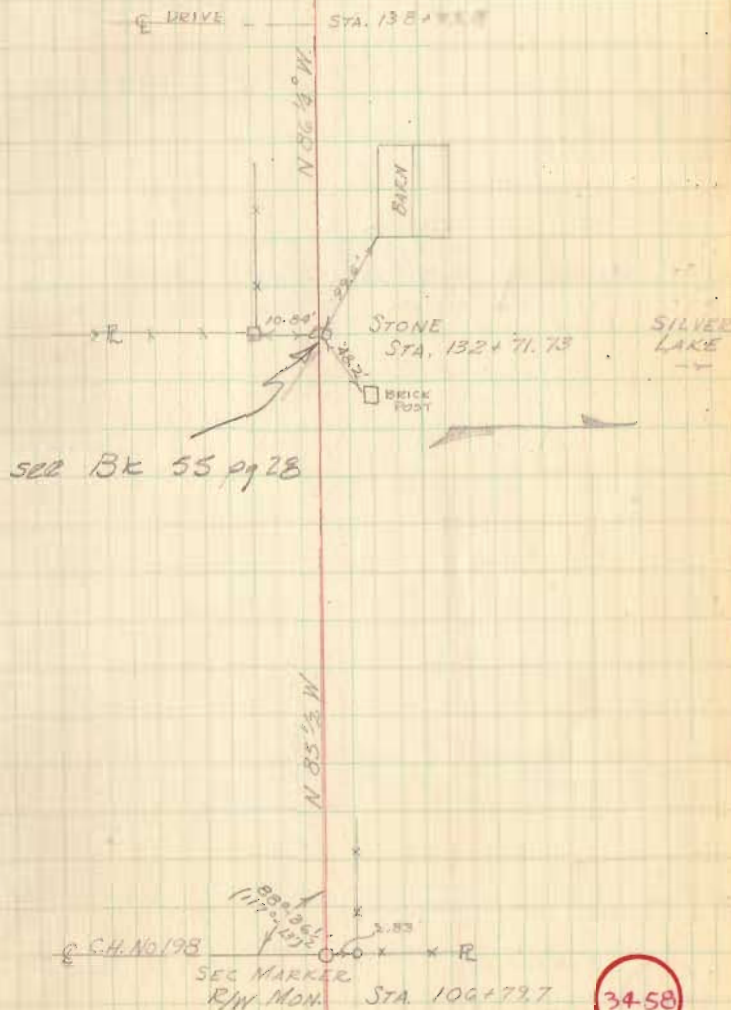
C.H. No 11
HARRISON TWP.
40 R/W

STA. 132+71.73 - STONE - SECTION MARKER
SEE F.B. 55 pp. 28

STA. 106+79.7 INTERSECTION C.H. No 198
SECTION MARKER (R/W MON) E FENCE RT.

AUG 19, 1959
WEEK HOT
DLD
DLT
DEG
DWS

17



INDEXED ON MAP

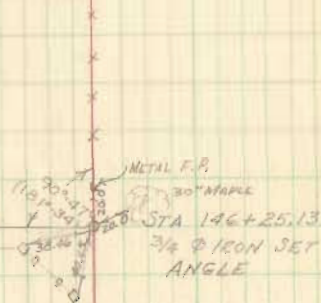
FB 702

C.H. No. 11
HARRISON TWP
40' R/W

STA 146+25.13 - 3/4" IRON SET ANGLE 90°47' LT.

18

S 3 1/2° W



STA 141+22.5

20.3
STA 139+74.9

3458

INDEXED ON MAP

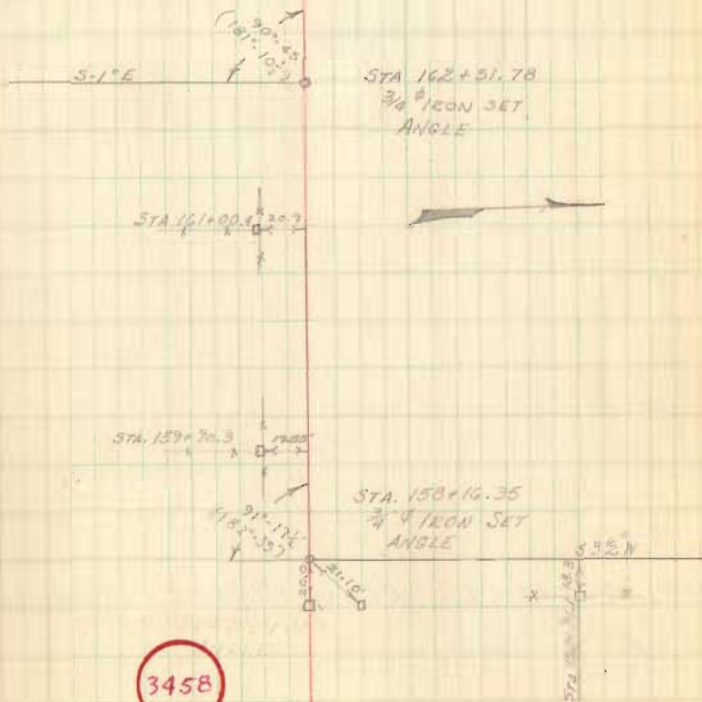
FB 702

C. H. No. 11
HARRISON TWP.
40 RW

19

STA. 162+51.78 $\frac{3}{4}$ " IRON SET ANGLE 93°-45' LT.

STA. 158+16.35 $\frac{3}{4}$ " IRON SET ANGLE 91°-17' RT.

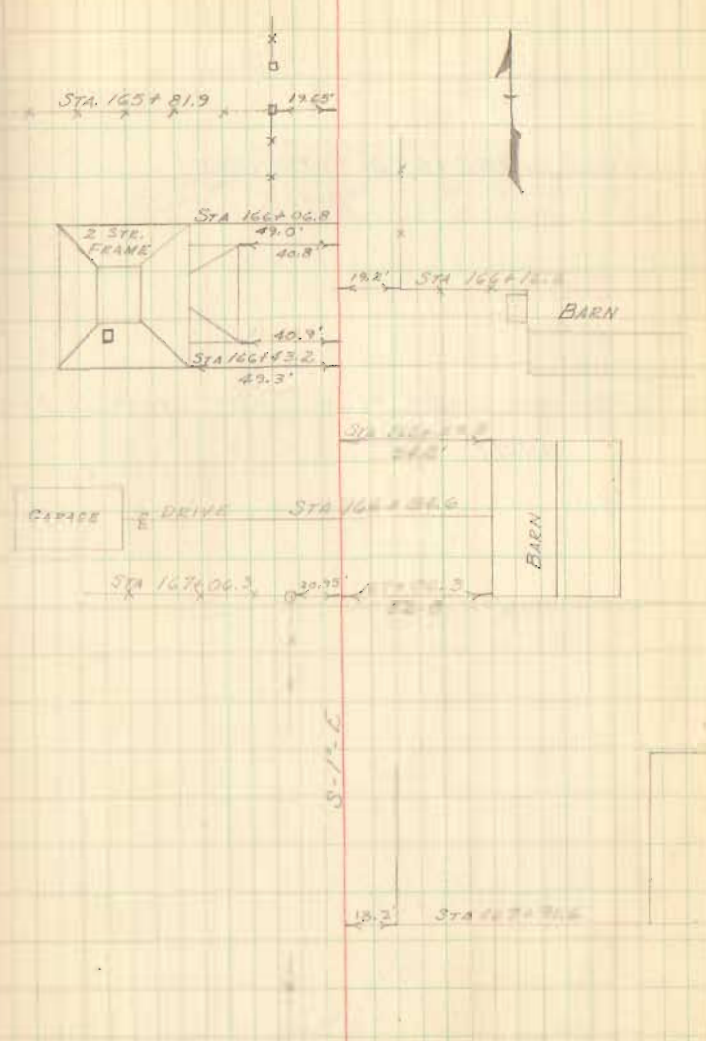


INDEXED ON MAP

FB 702

C.H No 11
HARRISON TWP
40' R/W

20



STA. 168+53.7 - RR SPIKE SET - NO ANGLE

R.R SPIKE SET
STA 168+53.7
NO ANGLE

3458

INDEXED ON MAP

FB 702

C.H. No 11
HARRISON TWP.
40' R/W

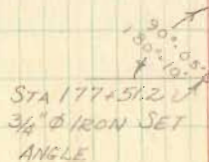
STA 187+63 - 188+02.8 BRIDGE

STA 187+30.2 SECTION LINE STONE & FENCE
ANGLE $0^{\circ}-07\frac{1}{2}'$ LT.

STA 177+51.2 $\frac{3}{4}$ " ϕ IRON SET ANGLE $90^{\circ}-05'$ RT.

AUG 20, 1959
90° S

21



STA 169+87.4

3458

INDEXED ON MAP

FB 702

C.H. No. 11
HARRISON TWP
40 R/W

STA 199+53 R.R. SPIKE SET NO ANGLE

DLD
DLT
DEG
DWS

22

CEMENT
POST \square ^{19.00} STA 207+23.5

21.1 \square STA 201+00.8

20.15 \square STA 201+59.9

CEMENT
POST \square ^{19.65} STA 200+79.9

STA 199+53
R.R. SPIKE SET
NO ANGLE

DRIVE STA 193+93.8

19.55 \square
STA 198+89.8

19.9 \square STA 193+39.1

3458

INDEXED ON MAP

FB 702

C.H. No 11
HARRISON TWP
40' R/W

STA. 245+46.9 RR SPIKE SET NO ANGLE

STA 240+69.9 1" IRON PIPE FOUND INTERSECT.
C.H. No 46. ANGLE 0°-16' LT.

STA 214+03.9 3/4" IRON PIPE FOUND
INTERSECTION C.H. No 201 ANGLE 0°-05' RT.
SEE FB 678 PP 10

23

STA 245+46.9
R.R. SPIKE SET
NO ANGLE

0°-16'
(0°-32')

E C.H. No 46
STA 240+69.9
1" IRON PIPE
ANGLE

E DRIVE
STA 232+53.2

DRIVE
STA 228+90.9

0°-05'
(0°-10')

E C.H. No 201
STA 214+03.9
3/4" IRON PIPE FOUND
ANGLE

STA 210+79.7 12.63'

3458

INDEXED ON MAP

FB 702

C.H. No 11
HARRISON TWP
40' R/W

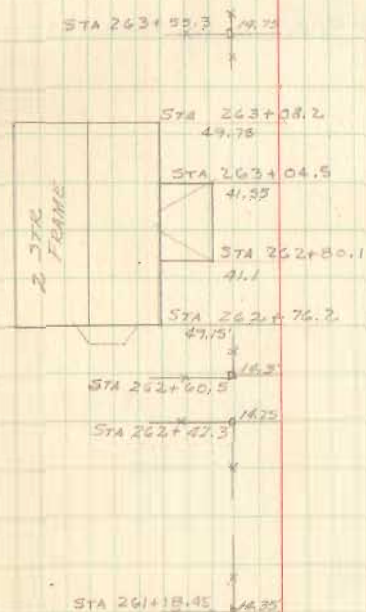
STA 267+30.5 $\frac{1}{2}$ " ϕ IRON INTERSECTION

C.H. No 31 END SURVEY

SEE FB 667 pp 10

24

C.H. No 31 STA 267+30.5
 $\frac{1}{2}$ " ϕ IRON



20.85 STA 243+94.1
CONC
POST

3458

INDEXED ON MAP