

REC'D 10-30-06 SMY/ALC

Lee Surveying and Mapping Co., Inc.

Land Surveys • Topography • Subdivisions • Construction Layout

117 N. Madriver St.
Bellefontaine OH 43311



Phone: (937) 593-7335
Fax: (937) 593-7444

1975-2005 - 30 YEARS OF EXCELLENCE

**MARKIN MOREHEAD, LTD.
10.116 ACRE**

Lying in Section 9, Town 3, Range 14, Harrison Township, Logan County, Ohio.

Being out of the Markin Morehead, Ltd., 48.955 acre tract as deeded and described in Official Record 834, Page 910 of the Logan County Records of Deeds and being more particularly described as follows:

Commencing on a 1 inch iron rod found on the intersection of the center-lines of Township Road 204 and Township Road 32.

THENCE, with the center-line of Township Road 204 (50 feet wide), N 74°-53'-07"W, a distance of 993.42 feet to a railroad spike found at the TRUE POINT OF BEGINNING.

THENCE, with the west line of the Larry D. Rose 0.63 acre tract (O.R. 526, Pg. 60), S 5°-44'-18"W, a distance of 202.70 feet to a 5/8 inch iron rod set, passing a 5/8 inch iron rod set at 25.35 feet.

THENCE, with the south lines of the said 0.63 acre tract, the Jesse J. Meadows 0.64 acre tract (Vol. 369, Pg. 801), the Nancy Evans-Donley 0.64 acre tract (O.R. 405, Pg. 123), the Charles M. Feasel 0.64 acre tract (Vol. 360, Pg. 913), the Roger D. Evans 0.64 acre tract (O.R. 336, Pg. 700), and the Betty J. Smith 0.64 acre tract (Vol. 388, Pg. 602), S 74°-52'-56" E, a distance of 790.38 feet to a 3/4 inch iron rod found.

THENCE, with the west lines of the Steven J. Forster 1.04 acre tract (O.R. 538, Pg. 340) and the Wayne H. Linkinhoker 0.96 acre tract (O.R. 163, Pg. 827), S 5°-50'-00" W, a distance of 452.64 feet to a 5/8 inch iron rod set.

THENCE, with the north line of the Timothy J. Ewing 2.599 acre tract (O.R. 833, Pg. 567) and said line extended, N 84°-09'-47"W, a distance of 826.00 feet to a 5/8 inch iron rod set.

THENCE, with the east line of the Don Downing, etal 16.55 acre tract (O.R. 464, Pg. 601, Tract III), N 5°-31'-10"E, a distance of 795.86 feet to a railroad spike found on the center-line of Township Road 204, passing a 5/8 inch iron rod set at 768.67 feet.

THENCE, with the center-line of Township Road 204, the following two courses:

S 61°-19'-38"E, a distance of 20.56 feet to a railroad spike found.

S 74°-54'-42"E, a distance of 31.46 feet to the point of beginning.

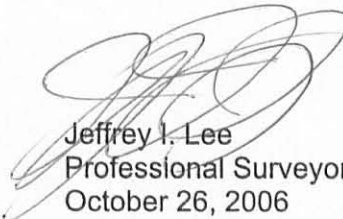
Containing 10.116 acres, of which 0.030 acre is within the highway right-of-way.

The basis for bearings is the center-line of Township Road 204 at the intersection of Township Road 32, being N 74°-53'-07"W, and all other bearings are from angles and distances measured in a field survey by Lee Surveying and Mapping Co., Inc. on October 26, 2006.



ORIGINAL STAMP IN GREEN

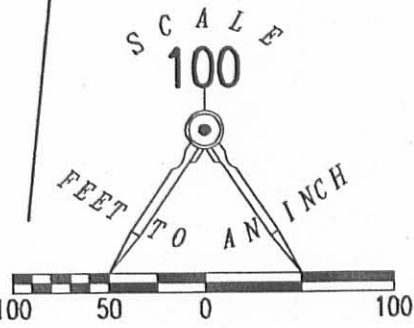
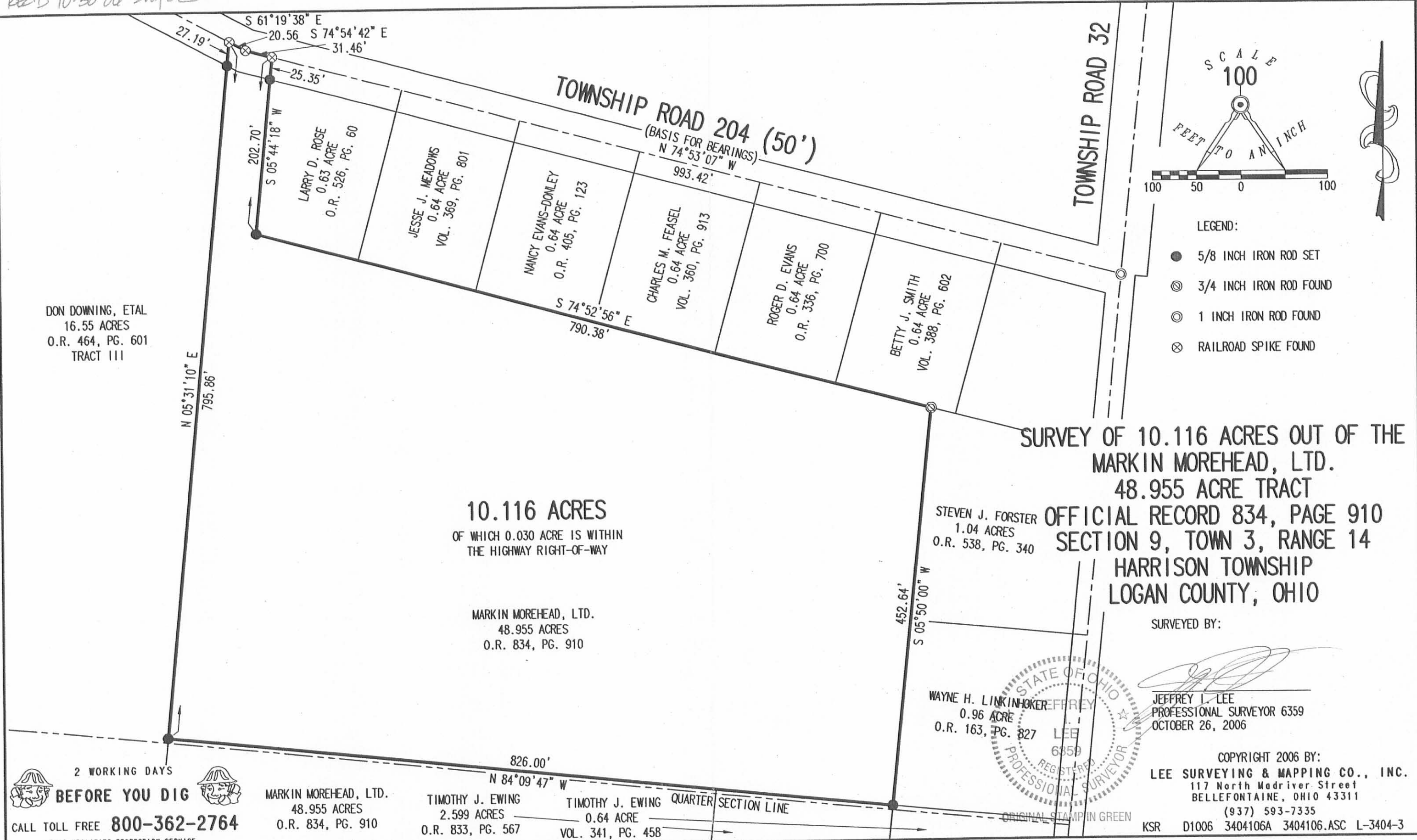
Description prepared by:


Jeffrey I. Lee
Professional Surveyor 6359
October 26, 2006

3404106A

INDEXED ON MAP
4924 10

REV'D 10-30-06 SMJ/OK



- LEGEND:**
- 5/8 INCH IRON ROD SET
 - ⊙ 3/4 INCH IRON ROD FOUND
 - ⊙ 1 INCH IRON ROD FOUND
 - ⊗ RAILROAD SPIKE FOUND

DON DOWNING, ETAL
16.55 ACRES
O.R. 464, PG. 601
TRACT III

**SURVEY OF 10.116 ACRES OUT OF THE
MARKIN MOREHEAD, LTD.
48.955 ACRE TRACT
OFFICIAL RECORD 834, PAGE 910
SECTION 9, TOWN 3, RANGE 14
HARRISON TOWNSHIP
LOGAN COUNTY, OHIO**

SURVEYED BY:

JEFFREY I. LEE
 PROFESSIONAL SURVEYOR 6359
 OCTOBER 26, 2006



COPYRIGHT 2006 BY:
LEE SURVEYING & MAPPING CO., INC.
 117 North Madriver Street
 BELLEFONTAINE, OHIO 43311
 (937) 593-7335
 KSR D1006 3404106A 3404106.ASC L-3404-3

2 WORKING DAYS
BEFORE YOU DIG
 CALL TOLL FREE **800-362-2764**
 OHIO UTILITIES PROTECTION SERVICE.

MARKIN MOREHEAD, LTD.
 48.955 ACRES
 O.R. 834, PG. 910

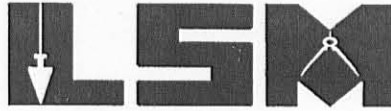
INDEXED ON MAP
 4924 IP

Received 9-26-02 or gms

Lee Surveying and Mapping Co., Inc.

Land Surveys • Topography • Subdivisions • Construction Layout

117 N. Madriver St.
Bellefontaine OH 43311



Phone: (937) 593-7335
Fax: (937) 593-7444

EWING 1.069 ACRES

Lying in Section 9, Town 3, Range 14, Harrison Township, Loan County, Ohio.

Being out of the Thomas J. Ewing original 62-1/2 acre tract as deeded and described in Official Record 233, Page 671, Tract II of the Logan County Records of Deeds and being more particularly described as follow:

Beginning at a stone found in a monument box on the southeast corner of Section 9 on the south line of Harrison Township at the intersection of the center-lines of Township Road 200 and Township Road 32.

THENCE, with the east line of Section 9 and the center-line of Township Road 32, N 5°-20'-00" E, a distance of 1519.12 feet to a railroad spike found at the TRUE POINT OF BEGINNING.

THENCE, with the lines of the Fred W. McColloch 2.22 acre tract (Vol. 404, Pg. 647), the following two (2) courses:

N 88°-20'-30" W, a distance of 221.11 feet to a 5/8 inch iron rod found, passing a 5/8 inch iron rod found at 30.10 feet;

N 4°-02'-45" W, a distance of 172.38 feet to a 5/8 inch iron rod set.

THENCE, N 80°-28'-44" E, a distance of 257.43 feet to a MAG nail set, passing a 5/8 inch iron rod set at 226.32 feet.

THENCE, with the east line of Section 9 and the center-line of Township Road 32, (60 feet wide), S 5°-50'-13" W, a distance of 9.50 feet to a 3/4 inch iron rod found.

THENCE, with the east line of Section 9 and the center-line of Township Road 32, S 5°-20'-00" W, a distance of 212.40 feet to the point of beginning.

Containing 1.069 acres, of which 0.147 acre is within the highway right-of-way.

The basis for bearings is the east line of Section 9, being N 5°-20'-00" E, and all other bearings are from angles and distances measured in a field survey by Lee Surveying and Mapping Co., Inc. on August 22, 2002.

Description prepared by:


Jeffrey I. Lee
Professional Surveyor 6359
September 20, 2002



ORIGINAL STAMP IN GREEN

L-3404

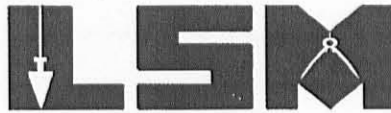
INDEXED ON MAP
4924 2D-1

Received 9-26-02 OK

Lee Surveying and Mapping Co., Inc.

Land Surveys • Topography • Subdivisions • Construction Layout

117 N. Madriver St.
Bellefontaine OH 43311



Phone: (937) 593-7335
Fax: (937) 593-7444

EWING 51.731 ACRES

Lying in Section 9, Town 3, Range 14, Harrison Township, Loan County, Ohio.

Being out of the Thomas J. Ewing original 62-1/2 acre tract and 14.78 acre tract as deeded and described in Official Record 233, Page 671, Tract II and Tract III of the Logan County Records of Deeds and being more particularly described as follow:

Beginning at a stone found in a monument box on the southeast corner of Section 9 on the south line of Harrison Township at the intersection of the center-lines of Township Road 200 and Township Road 32.

THENCE, with the east line of Section 9 and the center-line of Township Road 32 (varied width), N 5°-20'-00" E, a distance of 637.24 feet to a railroad spike found at the TRUE POINT OF BEGINNING.

THENCE, with the north line of the Pamela J. Bosetti 16.04 acre tract (O.R. 548, Pg. 753), N 79°-30'-13" W, a distance of 1028.49 feet to a 3/4 inch iron rod found, passing a 5/8 inch iron rod set at 30.24 feet.

THENCE, with the east line of the George Hanson Deal 95.76 acre tract (O.R. 349, Pg. 354) and the east line of the Thelma Joy Downing Matthews 16.55 acre tract (O.R. 464, Pg. 601, Tract III), N 5°-31'-10" E, a distance of 2720.66 feet to a railroad spike found, passing a 5/8 inch iron rod set at 2693.47 feet.

THENCE, with the center-line of Township Road 204 (50 feet wide), S 61°-19'-38" E, a distance of 20.56 feet to a railroad spike found.

THENCE, with the center-line of Township Road 204, S 74°-54'-42" E, a distance of 31.46 feet to a railroad spike found.

THENCE, with the west line of the Larry D. Rose 0.63 acre tract (O.R. 526, Pg. 60), S 5°-44'-18" W, a distance of 202.70 feet to a 5/8 inch iron rod set, passing a 5/8 inch iron rod set at 25.35 feet.

THENCE, with the south lines of the said 0.63 acre tract, the Jesse J. Meadows 0.64 acre tract (Vol. 369, Pg. 801), the Nancy Evans-Donley 0.64 acre tract (O.R. 405, Pg. 123), the Charles M. Feasel 0.64 acre tract (Vol. 360, Pg. 913), the Roger D. Evans 0.64 acre tract (O.R. 336, Pg. 700), and the Betty J. Smith 0.64 acre tract (Vol. 388, Pg. 602), S 74°-52'-56" E, a distance of 790.38 feet to a 3/4 inch iron rod found.

THENCE, with the west lines of the Steven J. Forster 1.04 acre tract (O.R. 538, Pg. 340), the Wayne H. Linkinhoker 0.96 acre tract (O.R. 163, Pg. 827), the Timothy J. Ewing 0.64 acre tract (Vol. 341, Pg. 458) and the Rebecca R. Tanger 0.64 acre tract (O.R. 162, Pg. 17), S 5°-50'-00" W, a distance of 732.75 feet to a 5/8 inch iron rod set.

THENCE, with the south line of the said Tanger 0.64 acre tract, S 84°-10'-00" E, a distance of 200.00 feet to a railroad spike found, passing a 5/8 inch iron rod set at 170.00 feet.

THENCE, with the east line of Section 9 and the center-line of Township Road 32, S 5°-50'-13" W, a distance of 624.47 feet to a MAG nail set.

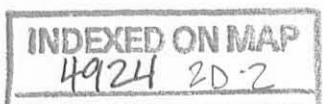
THENCE, S 80°-28'-44" W, a distance of 257.43 feet to a 5/8 inch iron rod set, passing a 5/8 inch iron rod set at 31.11 feet.

THENCE, S 4°-02'-45" E, a distance of 28.09 feet to a 5/8 inch iron rod set.

THENCE, with the lines of the Fred W. McColloch 2.22 acre tract (Vol. 404, Pg. 647), the following four (4) courses:

S 82°-32'-06" W, a distance of 197.13 feet to a 3/4 inch iron rod found;

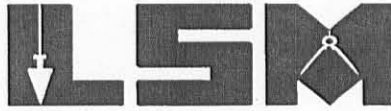
S 52°-06'-18" W, a distance of 93.35 feet to a 1-1/4 inch "T" post found;



Lee Surveying and Mapping Co., Inc.

Land Surveys • Topography • Subdivisions • Construction Layout

117 N. Madriver St.
Bellefontaine OH 43311



Phone: (937) 593-7335
Fax: (937) 593-7444

S 6°-05'-00" W, a distance of 154.68 feet to a 3/4 inch iron rod found;

S 82°-27'-36" E, a distance of 506.82 feet to a railroad spike found, passing a 5/8 inch iron rod set at 476.82 feet.

THENCE, with the east line of Section 9 and the center-line of Township Road 32, S 5°-20'-00" W, a distance of 728.28 feet to the point of beginning.

Containing 51.731 acres, of which 0.783 acre is within the highway right-of-way.

The basis for bearings is the east line of Section 9, being N 5°-20'-00" E, and all other bearings are from angles and distances measured in a field survey by Lee Surveying and Mapping Co., Inc. on August 22, 2002.

Description prepared by:

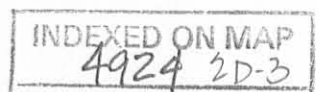
A handwritten signature in black ink, appearing to read 'Jeffrey I. Lee', is written over the typed name.

Jeffrey I. Lee
Professional Surveyor 6359
September 20, 2002



L-3404

ORIGINAL STAMP IN GREEN



THELMA JOY DOWNING MATTHEWS
16.55 ACRES
O.R. 464, PG. 601
TRACT III

20.56'
S 61°19'36"E
31.46'
S 74°54'42"E

TOWNSHIP ROAD 204 (50')

LARRY D. ROSE
0.63 ACRE
O.R. 526, PG. 60

JESSE J. MEADOWS
0.64 ACRE
VOL. 369, PG. 801

NANCY EVANS-DONLEY
0.64 ACRE
O.R. 405, PG. 123

CHARLES M. FEASEL
0.64 ACRE
VOL. 360, PG. 913

ROGER D. EVANS
0.64 ACRE
O.R. 336, PG. 700

BETTY J. SMITH
0.64 ACRE
VOL. 388, PG. 602

THOMAS J. EWING
ORIGINAL 14.78 ACRES
O.R. 233, PG. 671
TRACT III

STEVEN J. FORSTER
1.04 ACRES
O.R. 538, PG. 340

WAYNE H. LINKINOKER
0.96 ACRE
O.R. 163, PG. 827

S 05°50'00"W
742.75'

TIMOTHY J. EWING
0.64 ACRE
VOL. 341, PG. 458

REBECCA R. TANGER
0.64 ACRE
O.R. 162, PG. 17

S 84°10'00"E
200.00'

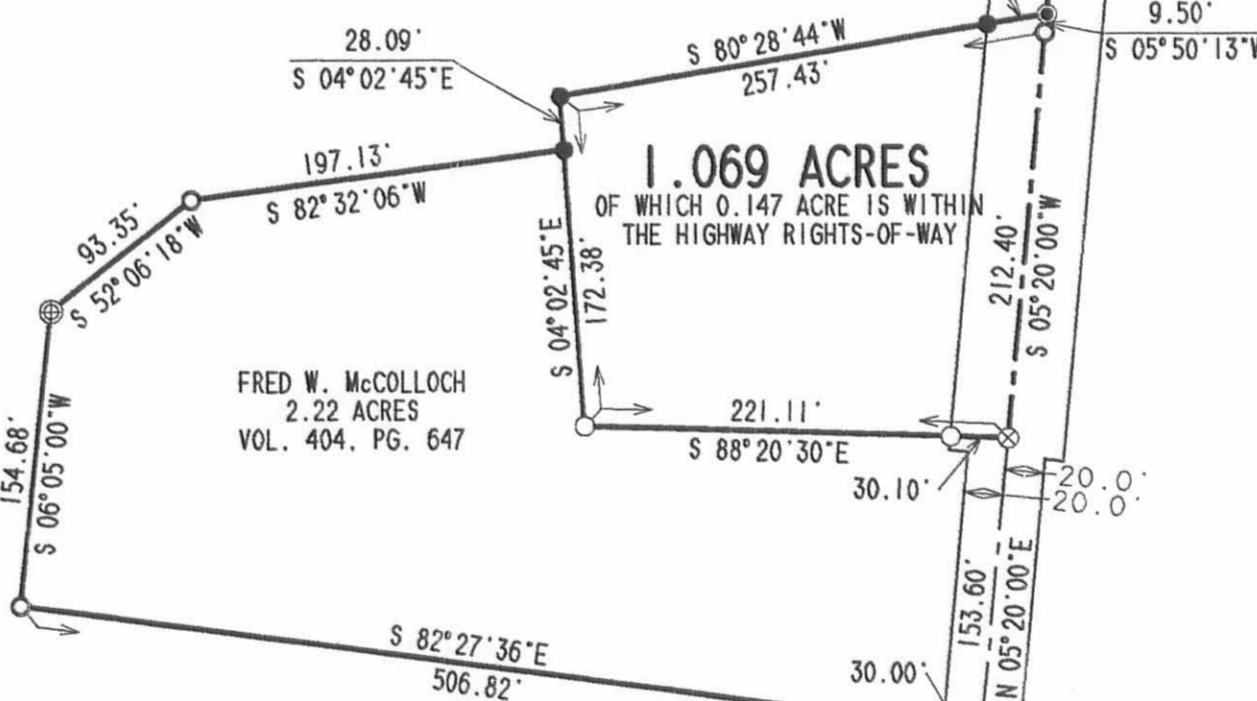
1/4 SECTION LINE

THOMAS J. EWING
ORIGINAL 62-1/2 ACRES
O.R. 233, PG. 671
TRACT II

GEORGE HANSON DEAL
95.76 ACRES
O.R. 349, PG. 354

N 05°31'10"E
2720.66'

51.731 ACRES
OF WHICH 0.783 ACRE IS WITHIN
THE HIGHWAY RIGHTS-OF-WAY



FRED W. McCOLLOCH
2.22 ACRES
VOL. 404, PG. 647

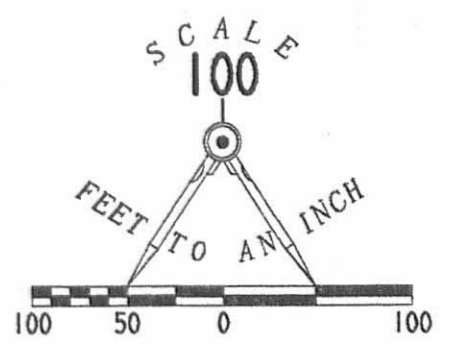
1.069 ACRES
OF WHICH 0.147 ACRE IS WITHIN
THE HIGHWAY RIGHTS-OF-WAY

TOWNSHIP ROAD 32
(MARKED WIDTH)
TOWNSHIP ROAD 32

PAMELA J. BOSETTI
16.04 ACRES
O.R. 548, PG. 753

1028.49'
N 79°30'13"W

HARRISON TOWNSHIP UNION TOWNSHIP TOWNSHIP ROAD 200



LEGEND

- 5/8 INCH IRON ROD SET
- 5/8 INCH IRON ROD FOUND
- 3/4 INCH IRON ROD FOUND
- ⊗ 1 INCH IRON ROD FOUND
- ⊗ 1-1/4 INCH "T" POST FOUND
- MAG NAIL SET
- ⊗ RAILROAD SPIKE FOUND
- ⊗ STONE FOUND IN A MONUMENT BOX

SURVEY OF TWO TRACTS OUT
OF THE THOMAS J. EWING
ORIGINAL 62-1/2 ACRE AND 14.78 ACRE TRACT
OFFICIAL RECORD 233, PAGE 671
TRACT II AND TRACT III
SECTION 9, TOWN 3, RANGE 14
HARRISON TOWNSHIP
LOGAN COUNTY, OHIO



SURVEYED BY:
Jeffrey F. Lee
JEFFREY F. LEE
PROFESSIONAL SURVEYOR 6359
AUGUST 22, 2002

COPYRIGHT 2002 BY:
LEE SURVEYING & MAPPING CO., INC.
117 North Madison Street
BELLEFONTAINE, OHIO 43311
(937) 693-7335

2 WORKING DAYS
BEFORE YOU DIG
CALL TOLL FREE 800-362-2764
OHIO UTILITIES PROTECTION SERVICE.

EXEMPT ON MAP
A924 28

EWING SURVEY

February 12, 1972

TRACT 1

The following described real estate situated in Section 9, Town 3, Range 14, Harrison Township, Logan County, Ohio and being more particularly described as follows:

Beginning at an iron bar in the east line of Section 9 at the intersection of the centerline of T.R. 204 with the old centerline of T.R. 32 as shown on page 28 of Logan County Engineer Field Book No. 701; thence with said centerline of T.R. 204 N. $74^{\circ} 52'$ W. 140.1 feet to an iron bar; thence S. $15^{\circ} 08'$ W. 200.0 feet to an iron bar; thence S. $74^{\circ} 52'$ E. 172.9 feet to an iron bar in the old centerline of T.R. 32 and the east line of Section 9; thence with said old centerline and Section Line N. $5^{\circ} 50'$ E. 202.7 feet to the place of beginning.

Containing 0.72 acres, more or less.

The above described 0.72 acres being in the northeast corner of Thomas Ewing's 14.78 acre tract.

4924 3D-1

EWING SURVEY
February 12, 1972

TRACT 2

The following described real estate situated in Section 9,
Town 3, Range 14, Harrison Township, Logan County, Ohio and
being more particularly described as follows:

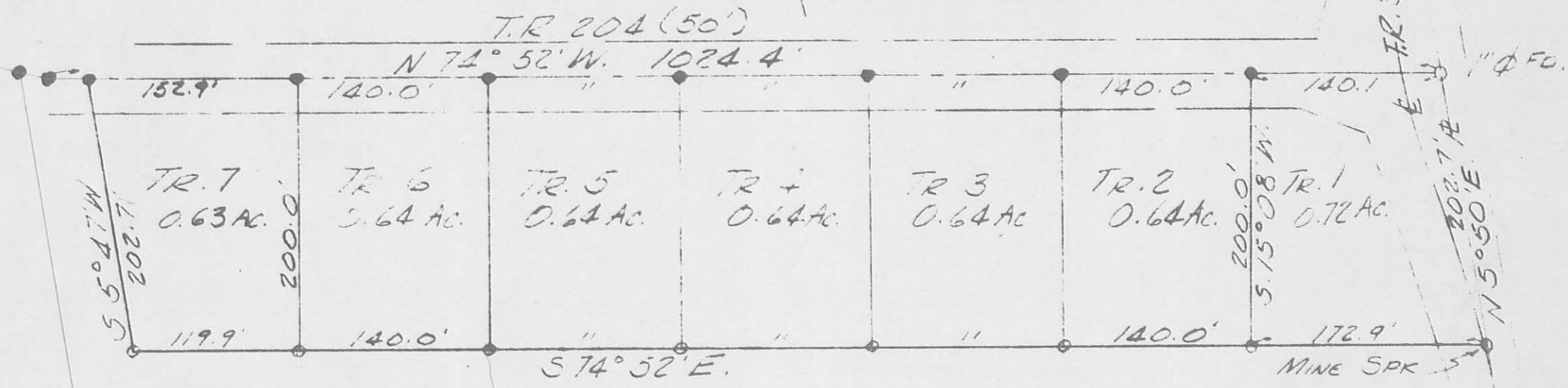
Beginning at an iron bar in the centerline of
T.R. 204 that is N. 74° 52' W. 140.1 feet from an iron
bar in the east line of Section 9 at the inter-
section of the centerline of T.R. 204 with the old
centerline of T.R. 32 as shown on page 28 of Logan
County Engineer Field Book No. 701; thence with
said T.R. 204 N. 74° 52' W. 140.0 feet to an iron
bar; thence S. 15° 08' W. 200.0 feet to an iron bar;
thence S. 74° 52' E. 140.0 feet to an iron bar;
thence N. 15° 08' E. 200.0 feet to the place of be-
ginning.

Containing 0.64 acres more or less.

The above described 0.64 acre being on the north side of
Thomas Ewing's 14.78 acre tract.



JOHN DOWNING
17.35 AC.



EWING SURVEY
 SEC 9 T. 3 R. 14
 HARRISON TOWNSHIP
 LOGAN COUNTY, OHIO
 FEBRUARY 2, 1972

SCALE 1" = 100'
 ● = R.R. SPIKE
 ○ = 3/4" IRON BAR

LESLIE H. GEESLIN
 REG. SURVEYOR 5248

INDEXED ON MAP

4924
 3P

FR 32
 SEC 1116