

Lee Surveying and Mapping Co.



Farm Surveys • Lot Surveys • Topography • Subdivisions • Construction Layout

855 EAST SANDUSKY AVENUE
BELLEFONTAINE, OHIO 43311

(513) 593-5780

CLAYTON M. LEE, P.S.
JEFFREY I. LEE, P.S.

D. YOUNKMAN, COUNTY ROAD 91, LOT 'A'

Lying in Section 13, T-2. R-15, ^{Harrison} Liberty Township, Logan County, Ohio and being out of that 92.97 acre tract deeded and described in Volume 335, Page 944 (Tract 3) of the Logan County Records of Deeds and more particularly described as follows;

Beginning at an iron bolt found at an angle in County Road 91. Said bolt identified in County Highway Field Book 552, Page 53 as being Station 233+12.25 and lying northwesterly along the center-line of said road a distance of 386.5 feet from the east line extended of said 92.97 acres.

THENCE, with the center-line of County Road 91, N 76°-38' W, a distance of 136.00 feet to an iron spike set for the southwest corner of this survey.

THENCE, at right angles, N 13°-22' E, a distance of 178.00 feet to an iron rod.

THENCE, S 88°-13'-30" E, a distance of 192.73 feet to an iron rod.

THENCE, S 10°-01'-50" W, a distance of 259.76 feet to an iron spike set in the center-line of County Road 91. (Station 233+92.25).

THENCE, with said center-line, N 44°-33' W, a distance of 80.17 feet to the point of beginning. Containing 40,028 Square Feet. (0.917 acre).

Last preceding deed reference: Volume 335, Page 944.

Surveyed by:

Clayton M. Lee

Clayton M. Lee
Reg. Surveyor No. 6181
6-18-78



5073 10-1

INDEXED ON MAP

Lee Surveying and Mapping Co.



Farm Surveys • Lot Surveys • Topography • Subdivisions • Construction Layout

855 EAST SANDUSKY AVENUE
BELLEFONTAINE, OHIO 43311

(513) 593-5780

CLAYTON M. LEE, P.S.
JEFFREY I. LEE, P.S.

D. YOUNKMAN, COUNTY ROAD 91, LOT 'B'

Lying in Section 13, T-2, R-15, Harrison Township, Logan County, Ohio and being out of that 92.97 acre tract deeded and described in Volume 335, Page 944 (Tract 3) of the Logan County Records of Deeds and more particularly described as follows:

Beginning at an iron spike set in the center-line of County Road 91 a distance of 150.00 feet northwesterly along said center-line from the east line extended of said 92.97 acres and designated in the County Engineer's Field Book 552, Page 53 as being Station 235+48.75.

THENCE, N 10°-01'-50" E, a distance of 368.85 feet to an iron rod, passing an iron rod at 30.68 feet.

THENCE, N 88°-13'-30" W, a distance of 128.74 feet to an iron rod.

THENCE, parallel to the east line, S 10°-01'-50" W, a distance of 259.76 feet, passing an iron rod at 229.08 feet, to the center-line of County Road 91 at Station 233+92.42.

THENCE, with said center-line, S 44°-33' E, a distance of 156.33 feet to the point of beginning. Containing 40,043 square feet (0.919 acre).

Last preceding deed reference: Volume 335, Page 944.

Surveyed by:

Clayton M. Lee

Clayton M. Lee
Reg. Surveyor No. 6181
6-18-78



5073 1D-2

INDEXED ON MAP

Lee Surveying and Mapping Co.



Farm Surveys • Lot Surveys • Topography • Subdivisions • Construction Layout

855 EAST SANDUSKY AVENUE
BELLEFONTAINE, OHIO 43311

(513) 593-5780

CLAYTON M. LEE, P.S.
JEFFREY I. LEE, P.S.

D. YOUNKMAN, COUNTY ROAD 91, LOT 'C'

Lying in Section 13, T-2, R-15, Harrison Township, Logan County, Ohio and being out of that 92.97 acre tract deeded and described in Volume 335, Page 944 (Tract 3) of the Logan County Records of Deeds and more particularly described as follows:

Beginning at a harrow tooth found in the center-line of County Road 91 marking the east line extended of said 92.97 acres and designated as being Station 236+98.75 in the County Engineer's Field Book 552, Page 53.

THENCE, with the center-line of County Road 91, N 44°-33' W, a distance of 150.00 feet to an iron spike set for the southwest corner of this survey.

THENCE, N 10°-01'-50" E, a distance of 368.85 feet to an iron rod, passing an iron rod at 30.68 feet.

THENCE, S 88°-13'-30" E, a distance of 74.56 feet to an iron rod set in the east line of the 92.97 acres.

THENCE, with the said east line, S 4°-06' W, a distance of 469.00 feet to the point of beginning. Containing 40,013 square feet (0.919 acre).

Last preceding deed reference: Volume 335, Page 944.

Surveyed by:



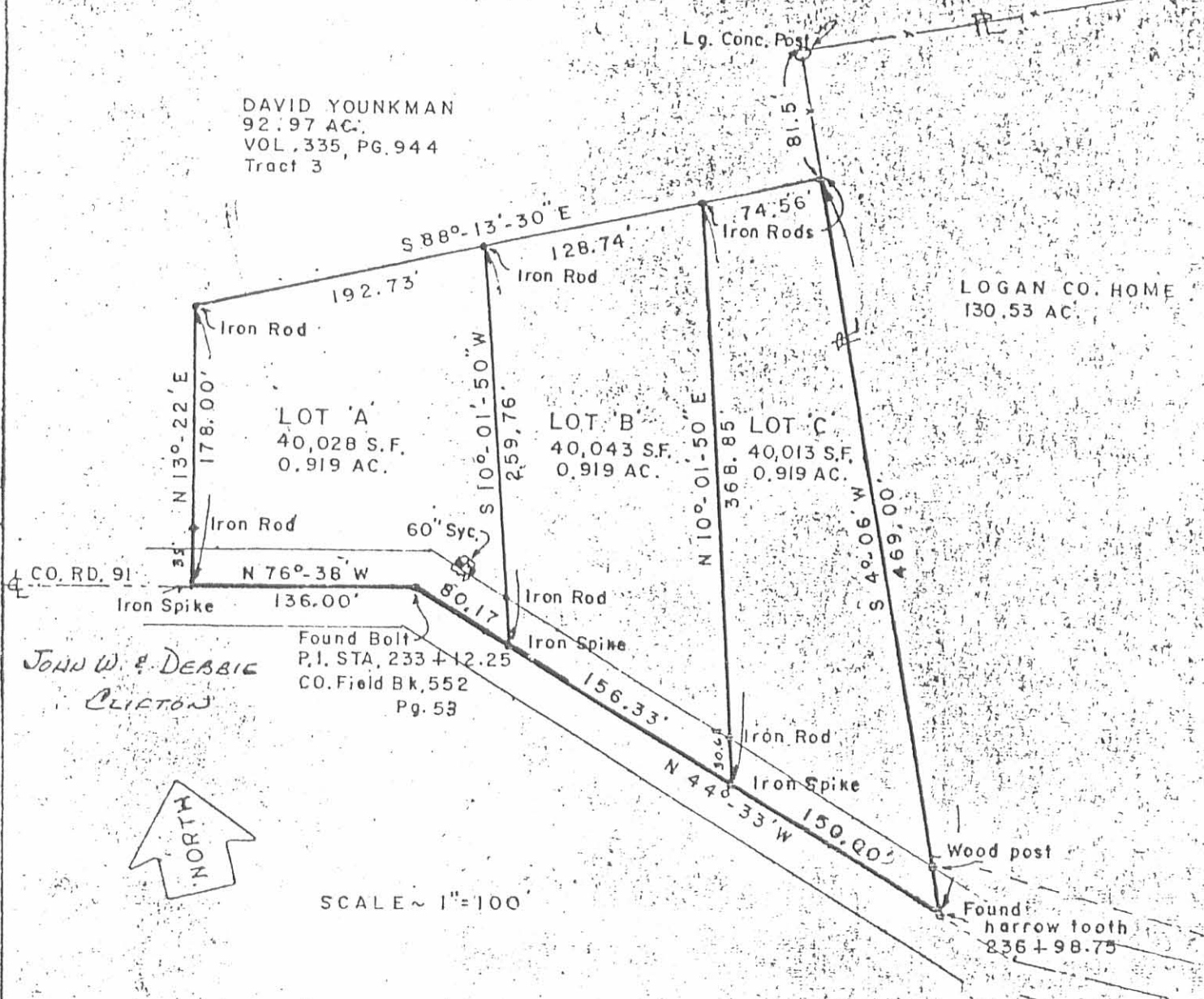
Clayton M. Lee
Reg. Surveyor No. 6181
6-18-78

5073 1D-3

INDEXED ON MAP

DAVID YOUNKMAN
 92.97 AC.
 VOL. 335, PG. 944
 Tract 3

LOGAN CO. HOME
 130.53 AC



JOHN W. & DEBBIE
 CLAYTON

Found Bolt
 P.I. STA. 233 + 12.25
 CO. Field Bk. 552
 Pg. 53



SCALE ~ 1" = 100'

SURVEY OF 3 LOTS OUT THE 92.97
 ACRE DAVID YOUNKMAN TRACT (VOL. 335, PG. 944)
 SECTION 13, T-2, R-15,
 HARRISON TWP.
 LOGAN CO., OHIO



Surveyed by:
Clayton M. Lee

Clayton M. Lee
 Reg. Surveyor 6181
 6-13-78

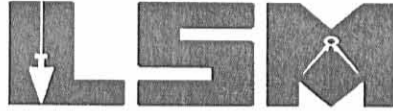
Lee Surveying & Mapping Co.
 855 E. Sandusky Ave.
 BELLEFONTAINE, OHIO 43311
 (513) 593-5780

INDEXED ON MAP
 5073 IP

Lee Surveying and Mapping Co., Inc.

Land Surveys • Topography • Subdivisions • Construction Layout

117 N. Madriver St.
Bellefontaine OH 43311



Phone: (937) 593-7335
Fax: (937) 593-7444

1975-2005 - 30 YEARS OF EXCELLENCE MAC-O-CHEEK, INC. 221.179 ACRES

Lying in Sections 7, 8, 13 and 14, Town 2, Range 15 B.M.R.S, Harrison Township, Logan County, Ohio.

Being all of the remainder of the Mac-O-Cheek, Inc., original 86.33 acre tract, original 35.71 acre tract, original 92.97 acre tract, original 90.26 acre tract and the original 7.336 acre tract as deeded and described in Official Record 159, Page 97 Tracts I, II, III, IV and V, also being all of the Mac-O-Cheek, Inc., 0.014 acre tract as deeded and described in Official Record 450, Page 693 of the Logan County Records of Deeds and being more particularly described as follows:

Beginning at a 5/8 inch iron rod found at the southwest corner of Section 14 on the Greenville Treaty Line, south line of McArthur Township and the south line of Virginia Military Survey 9881.

THENCE, with the Greenville Treaty Line, the south lines of McArthur Township and of Virginia Military Survey 9881, the J. Robert Renick, Trustee 125 acre tract (O.R. 588, Pg. 805 Parcel Nine, Tract IV, Parcel I), and the Dwight E. Reed 186.36 acre tract (O.R. 42, Pg. 566), N 82°-28'-15"E, a distance of 3342.75 feet to a 5/8 inch iron rod found.

THENCE, with the lines of the Super Food Services Inc. 40.00 acre tract (O.R. 100, Pg. 507), the following two courses:

S 11°-51'-32"E, a distance of 1956.38 feet to a 5/8 inch iron rod set,

N 82°-43'-31"E, a distance of 1100.83 feet to a 5/8 inch iron rod set.

THENCE, with the west line of the Super Food Services Inc. 11.00 acre tract (Vol. 367, Pg. 272), the west line of Ohio Valley Court, Plat Cabinet A, Slide 527, and the west line of the C. Douglas Chamberlain 18.959 acre tract (O.R. 30, Pg. 754), S 11°-51'-32"E, a distance of 2705.21 feet to a MAG nail set, passing a 5/8 inch iron rod set at 2666.86 feet.

THENCE, with the center-line of County Highway 91, (60 feet wide), N 63°-19'-39"W, a distance of 104.47 feet to a MAG nail set.

THENCE, with the east line of the Robert L. Shively 0.733 acre tract (O.R. 525, Pg. 965), N 12°-52'-07"W, a distance of 376.60 feet to a 5/8 inch iron rod found, passing a 5/8 inch iron rod found at 31.35 feet.

THENCE, with the north lines of the Robert L. Shively 1.093 acre tract (O.R. 453, Pg. 949), the Kandance Kissling 1.093 acre tract (O.R. 468, Pg. 80), the Robin L. Williams 1.093 acre tract (O.R. 756, Pg. 483), the Gary M. Watson 1.000 acre tract (O.R. 374, Pg. 484), the Gerald E. Skaggs 1.000 acre tract (O.R. 173, Pg. 616), the Charles D. Johns, Jr. 1.004 acre tract (O.R. 664, Pg. 978), and the Melissa J. Hall 1.00 acre tract (O.R. 234, Pg. 629), N 63°-20'-49"W, a distance of 1082.98 feet to a 5/8 inch iron rod found.

THENCE, with the west line of the said Melissa J. Hall 1.00 acre tract, S 26°-46'-57"W, a distance of 90.26 feet to a 5/8 inch iron rod found.

THENCE, with the north line of the Frances L. Mills 0.918 acre tract, (O.R. 380, Pg. 312), N 63°-16'-15"W, a distance of 199.71 feet to a 5/8 inch iron rod found.

THENCE, with the County Commissioners of Logan County original 164.35 acre tract, (Vol. T, Pg. 177) the following five courses:

N 27°-00'-24"E, a distance of 128.17 feet to a stone found.

N 63°-21'-15"W, a distance of 921.58 feet to a stone found.

With the west line of Section 7, N 4°-07'-13"E, a distance of 406.90 feet to a stone found.

INDEXED ON MAP
5073 2D-1

Lee Surveying and Mapping Co., Inc.

Land Surveys • Topography • Subdivisions • Construction Layout

117 N. Madriver St.
Bellefontaine OH 43311



Phone: (937) 593-7335
Fax: (937) 593-7444

1975-2005 - 30 YEARS OF EXCELLENCE

N 85°-01'-22"W, a distance of 431.00 feet to a stone found.

S 4°-14'-30"W, a distance of 218.44 feet to a 5/8 inch iron rod found.

THENCE, with the north line of the Linda C. Parker 1.266 acre tract (O.R. 635, Pg. 902),
N 77°-34'-34"W, a distance of 216.22 feet to a 5/8 inch iron rod set.

THENCE, with the lines of the Adam C. Stahler 0.917 acre tract (O.R. 748, Pg. 417), the following three courses:

N 10°-07'-49"E, a distance of 100.03 feet to a 5/8 inch iron rod set.

N 88°-10'-03"W, a distance of 192.73 feet to a 5/8 inch iron rod found.

S 13°-25'-27"W, a distance of 178.00 feet to a railroad spike found, passing a 5/8 inch iron rod set at 148.00 feet.

THENCE, with the center-line of County Highway 91, N 76°-34'-33"W, a distance of 1289.25 feet to a railroad spike found.

THENCE, with the east line of the Frank E. DeRossett 1.00 acre tract (O.R. 95, Pg. 684), N 4°-26'-02"E, a distance of 293.69 feet to a 5/8 inch iron rod found, passing a 5/8 inch iron rod found at 30.37 feet.

THENCE, with the north lines of the said 1.00 acre tract, the Robert Joe Sell 1.00 acre tract (O.R. 387, Pg. 680), the Kimberly A. Odle 1.00 acre tract (O.R. 304, Pg. 125), the Ronald E. McCully 1.00 acre tract, (O.R. 653, Pg. 600), N 76°-37'-57"W, a distance of 600.27 feet to a 5/8 inch iron rod set, passing a 5/8 inch iron rod found at 599.40 feet.

THENCE, with the lines of the Robert Roach 79.32 acre tract (Vol. 354, Pg. 31 Tract I), the following two courses:

N 4°-17'-35"E, a distance of 1566.26 feet to a stone found.

With the north line of Section 13, N 85°-42'-39"W, a distance of 694.24 feet to the point of beginning.

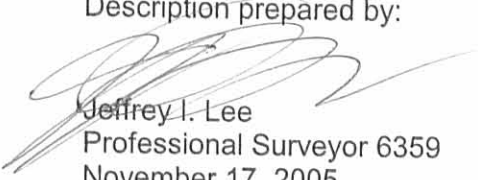
Containing 221.179 acres of which 0.962 acre is within the highway right-of-way. 26.878 acres in Section 14, 0.391 acre in Section 8, 119.590 acres in Section 13 and 74.320 acres in Section 7.

The basis for bearings is the Greenville Treaty Line, being N 82°-28'-15"E, and all other bearings are from angles and distances measured in a field survey by Lee Surveying and Mapping Co., Inc. on November 17, 2005

Description prepared by:

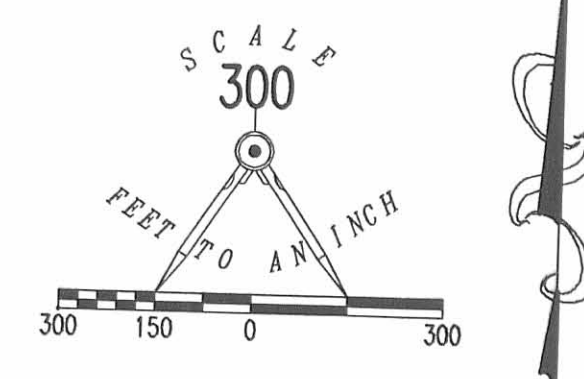


ORIGINAL STAMP IN GREEN

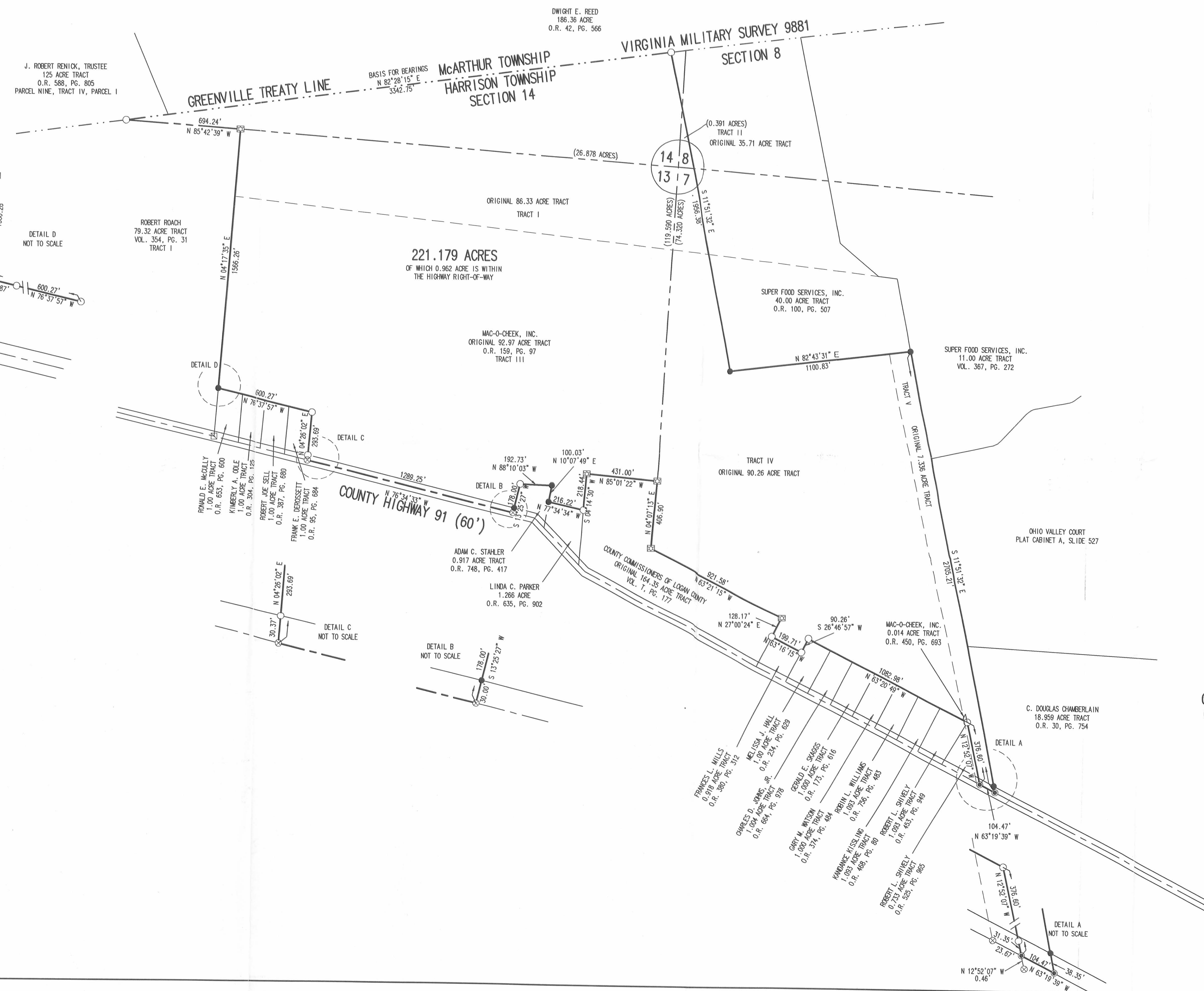

Jeffrey I. Lee
Professional Surveyor 6359
November 17, 2005
Revised November 23, 2005

L-642105

INDEXED ON MAP
5073 2D-2



- LEGEND
- 5/8 INCH IRON ROD SET
 - 5/8 INCH IRON ROD FOUND
 - ⊠ STONE FOUND
 - ⊙ MAG NAIL SET
 - ⊗ RAILROAD SPIKE FOUND
 - ⊠ SQUARE BOLT FOUND



A SURVEY OF A 221.179 ACRE TRACT, BEING ALL OF THE REMAINDER OF MAC-O-CHEEK, INC. ORIGINAL 86.33 ACRE TRACT, ORIGINAL 35.71 ACRE TRACT, ORIGINAL 92.97 ACRE TRACT, ORIGINAL 90.26 ACRE TRACT AND ORIGINAL 7.336 ACRE TRACT OFFICIAL RECORD 159, PAGE 97 TRACTS I, II, III, IV AND V AND THE MAC-O-CHEEK, INC. 0.014 ACRE TRACT OFFICIAL RECORD 450, PAGE 693 SECTIONS 7, 8, 13 AND 14 TOWN 2, RANGE 15 B.M.R.S HARRISON TOWNSHIP LOGAN COUNTY, OHIO



SURVEYED BY:
 JEFFREY L. LEE
 PROFESSIONAL SURVEYOR 6359
 NOVEMBER 17, 2005

COPYRIGHT 2005 BY:
 LEE SURVEYING & MAPPING CO., INC.
 117 North Madriver Street
 BELLEFONTAINE, OHIO 43311
 (937) 593-7335

ORIGINAL STAMP IN GREEN

ADW D1105 642105 L-642105-1

2 WORKING DAYS
BEFORE YOU DIG
 CALL TOLL FREE 800-362-2764
 OHIO UTILITIES PROTECTION SERVICE.

INDEXED ON MAP
 50.73.2P