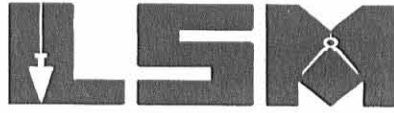


REV'D 5-22-04 SML/ML

Lee Surveying and Mapping Co., Inc.

Land Surveys • Topography • Subdivisions • Construction Layout

117 N. Madriver St.
Bellefontaine OH 43311



Phone: (937) 593-7335
Fax: (937) 593-7444

1975-2005 - 30 YEARS OF EXCELLENCE

**JACOBS, EWING AND EWING
2.599 ACRES**

Lying in Section 9, Town 3, Range 14, Harrison Township, Logan County, Ohio.

Being out of the Jenise D. Jacobs, Mark A. Ewing and Timothy J. Ewing original 51.552 acre tract as deeded and described in Official Record 791, Page 431, Tract II (reference Official Record 664, Page 136, Tract II) of the Logan County Records of Deeds and being more particularly described as follows:

Commencing at a 1 inch iron rod found on the east line of Section 9 at intersection of center-lines of Township Road 204 and Township Road 32.

THENCE, with the east line of Section 9 and the center-line of Township Road 32 (variable widths), S 5°-50'-13"W, a distance of 902.75 feet to a railroad spike found at the TRUE POINT OF BEGINNING.

THENCE, with the east line of Section 9 and the center-line of Township Road 32, S 5°-50'-13"W, a distance of 143.00 feet to a MAG nail set.

THENCE, N 84°-10'-00"W, a distance of 400.00 feet to a 5/8 inch iron rod set, passing a 5/8 inch iron rod set at 30.00 feet.

THENCE, N 5°-50'-56"E, a distance of 423.12 feet to a 5/8 inch iron rod set.

THENCE, S 84°-09'-47"E, a distance of 199.89 feet to a 5/8 inch iron rod found.

THENCE, with the west lines of the Timothy J. Ewing 0.64 acre tract (Vol. 341, Pg. 458) and the Rebecca R. Tanger 0.64 acre tract (O.R. 162, Pg. 17), S 5°-50'-00"W, a distance of 280.11 feet to a 5/8 inch iron rod found.

THENCE, with the south line of the said Tanger 0.64 acre tract, S 84°-10'-00"E, a distance of 200.00 feet to the point of beginning, passing a 5/8 inch iron rod found at 170.00 feet.


Containing 2.599 acres, of which 0.098 acre is within the highway right-of-way.

The basis for bearings is the center-line of Township Road 32, being S 5°-50'-13"W, and all other bearings are from angles and distances measured in a field survey by Lee Surveying and Mapping Co., Inc. on May 15, 2006.



ORIGINAL STAMP IN GREEN

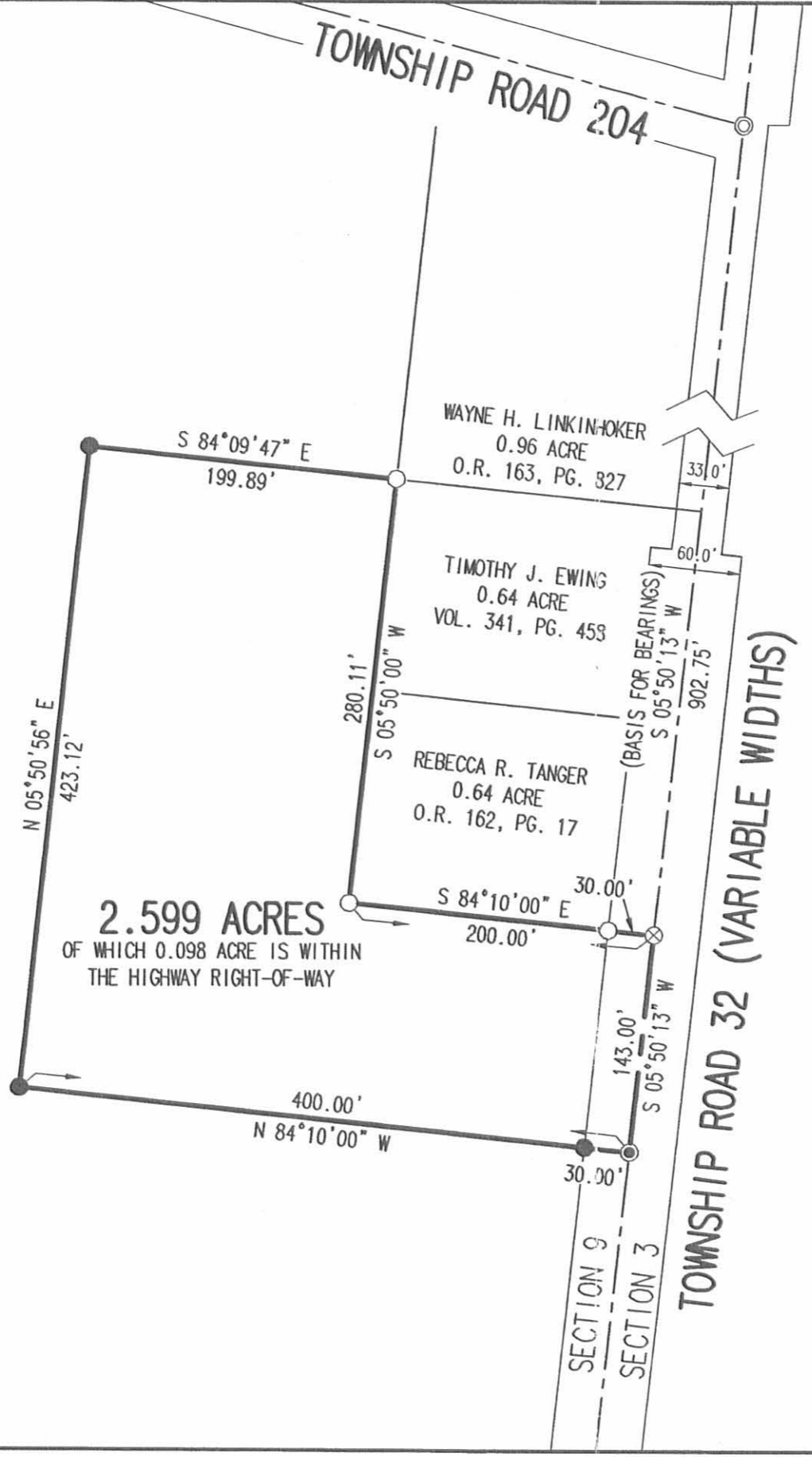
Description prepared by:


Jeffrey I. Lee
Professional Surveyor 6359
May 16, 2006

3404056A

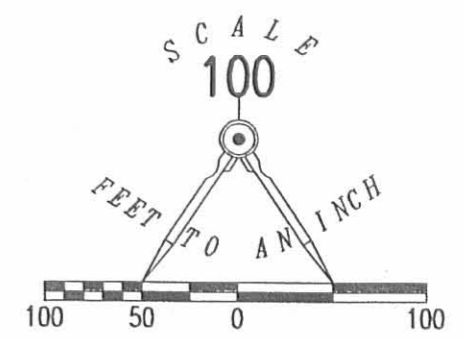


REV'D 5-22-06 SMM/ALZ



JENISE D. JACOBS, MARK A. EWING
AND TIMOTHY J. EWING
ORIGINAL 51.552 ACRES
O.R. 791, PG. 431, TRACT II
O.R. 664, PG. 136, TRACT II

2.599 ACRES
OF WHICH 0.098 ACRE IS WITHIN
THE HIGHWAY RIGHT-OF-WAY



- LEGEND:
- ⊗ RAILROAD SPIKE FOUND
 - MAG NAIL SET
 - ⊙ 1 INCH IRON ROD FOUND
 - 5/8 INCH IRON ROD FOUND
 - 5/8 INCH IRON ROD SET

**SURVEY OF 2.599 ACRES OUT OF THE
JENISE D. JACOBS, MARK A. EWING
AND TIMOTHY J. EWING
ORIGINAL 51.552 ACRE TRACT
OFFICIAL RECORD 791, PAGE 431, TRACT II
OFFICIAL RECORD 664, PAGE 136, TRACT II
SECTION 9, TOWN 3, RANGE 14
HARRISON TOWNSHIP
LOGAN COUNTY, OHIO**

SURVEYED BY:

Jeffrey I. Lee
JEFFREY I. LEE
PROFESSIONAL SURVEYOR 6359
MAY 15, 2006



ORIGINAL STAMP IN GREEN

COPYRIGHT 2006 BY:
LEE SURVEYING & MAPPING CO., INC.
117 North Madriver Street
BELLEFONTAINE, OHIO 43311
(937) 593-7335
KSR D0506 3404056A L-3404-3

2 WORKING DAYS
BEFORE YOU DIG
CALL TOLL FREE **800-362-2764**
OHIO UTILITIES PROTECTION SERVICE

INDEXED ON MAP
5251 1P

LESLIE H. GEESLIN

REGISTERED SURVEYOR NO. 5248

P. O. BOX 274

RUSHSVLVANIA, OHIO 43347

PHONE: (513) 468-2793

EWING SURVEY

May, 1979

The following described real estate situated in the State of Ohio, County of Logan, Township of Harrison and being part of the southeast $\frac{1}{4}$ of Section 9, Town 3, Range 14, B. M. R. S. and more particularly described as follows:

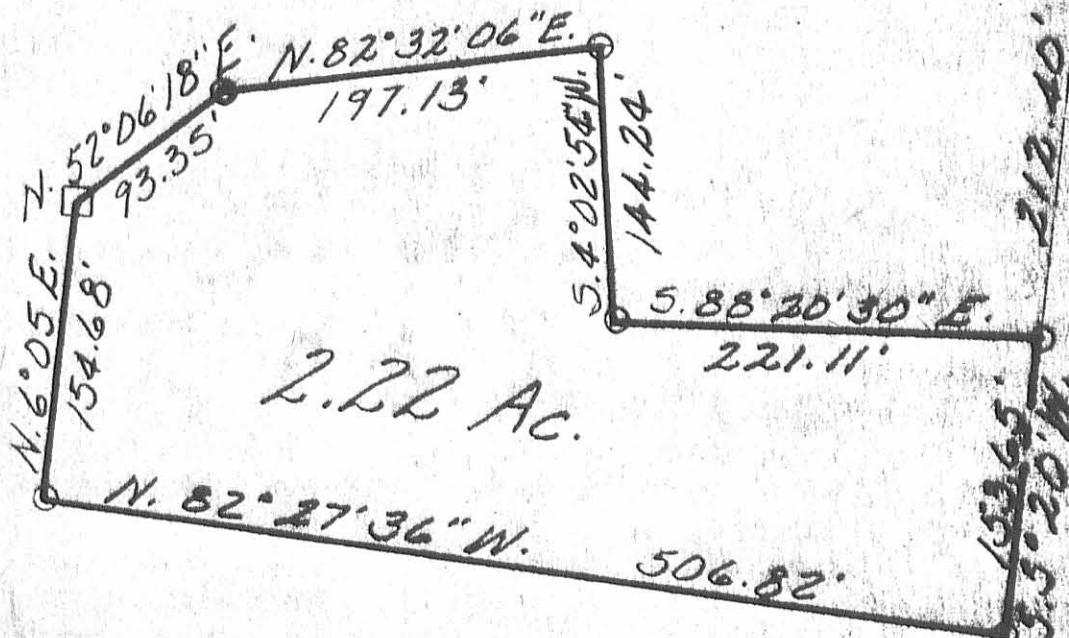
Beginning at an iron bar in the centerline of Township Road 32 that is S. $5^{\circ} 20' W.$ 212.40 feet from an iron pipe at Station 17 plus 32 as shown on Plan X-32 of the Logan County Engineer's office; thence with said centerline S. $5^{\circ} 20' W.$ 153.65 feet to an iron bar; thence N. $82^{\circ} 27' 36'' W.$ 506.82 feet to an iron bar; thence N. $6^{\circ} 05' E.$ 154.68 feet to a wood corner post; thence N. $52^{\circ} 06' 18'' E.$ 93.35 feet to an iron pipe; thence N. $82^{\circ} 32' 06'' E.$ 197.13 feet to an iron bar; thence S. $4^{\circ} 02' 54'' W.$ 144.24 feet to an iron bar; thence S. $88^{\circ} 20' 30'' E.$ 221.11 feet to the place of beginning.

Containing 2.22 acres more or less.

The above described 2.22 acres tract being on the east side of Thomas J. Ewing's 45.18 acre tract.

Reference is hereby made to a plat of this survey on file with the Logan County Engineer.

INDEXED ON MAP
5251 2D



2.22 Ac.

STA. 17+32.00 @ 1" PIPE PD.



LEGEND :

- = IRON BAR
- ⊙ = IRON PIPE
- = WOOD COR. POST

1366'
 T. R. 32 (10)
 3.5° 20' W.

STONE PD.
T. R. 200

EWING SURVEY
 MAY, 1979
 SEC. 9 T. 3 R. 14
 HARRISON TOWNSHIP
 LOGAN COUNTY, OHIO
 SCALE 1" = 100'

525.11 2P
 INDEXED ON MAP



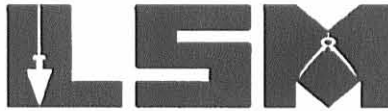
LESLIE M. GESLIN
 DISTRICT SURVEYOR

REC'D 9-14-06 SUM OR

Lee Surveying and Mapping Co., Inc.

Land Surveys • Topography • Subdivisions • Construction Layout

117 N. Madriver St.
Bellefontaine OH 43311



Phone: (937) 593-7335
Fax: (937) 593-7444

1975-2005 - 30 YEARS OF EXCELLENCE

**MARKIN MOREHEAD, LTD.
2.300 ACRES**

Lying in Section 9, Town 3, Range 14, Harrison Township, Logan County, Ohio.

Being out of the Markin Morehead, Ltd., 48.955 acre tract as deeded and described in Official Record 834, Page 910 of the Logan County Records of Deeds and being more particularly described as follows:

Commencing on a stone found in a monument box at the southeast corner of Section 9, on the south line of Harrison Township and on the intersection of the center-lines of Township Road 200 and Township Road 32.

THENCE, with the east line of Section 9 and the center-line of Township Road 32 (40 feet wide), N 5°-20'-00"E, a distance of 1168.27 feet to a MAG nail set at the TRUE POINT OF BEGINNING.

THENCE, N 82°-28'-09"W, a distance of 509.52 feet to a 5/8 inch iron rod set, passing a 5/8 inch iron rod set at 20.12 feet.

THENCE, N 6°-05'-00"E, a distance of 197.25 feet to a 3/4 inch iron rod found.

THENCE, with the south line of the Fred W. McColloch 2.220 acre tract (Vol. 404, Pg. 647), S 82°-27'-36"E, a distance of 506.94 feet to a railroad spike found on the east line of Section 9 and the center-line of Township Road 32, passing a 5/8 inch iron rod found at 476.82 feet.

THENCE, with the east line of Section 9 and the center-line of Township Road 32, S 5°-20'-00"W, a distance of 197.25 feet to the point of beginning.


Containing 2.300 acres, of which 0.091 acre is within the highway right-of-way.

The basis for bearings is the east line of Section 9, being N 5°-20'-00"E, and all other bearings are from angles and distances measured in a field survey by Lee Surveying and Mapping Co., Inc. on September 13, 2006.

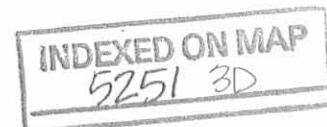


ORIGINAL STAMP IN GREEN

Description prepared by:


Jeffrey I. Lee
Professional Surveyor 6359
September 13, 2006

3404056

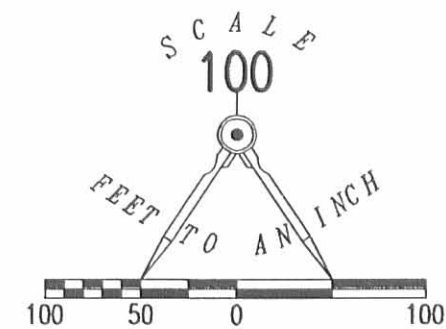
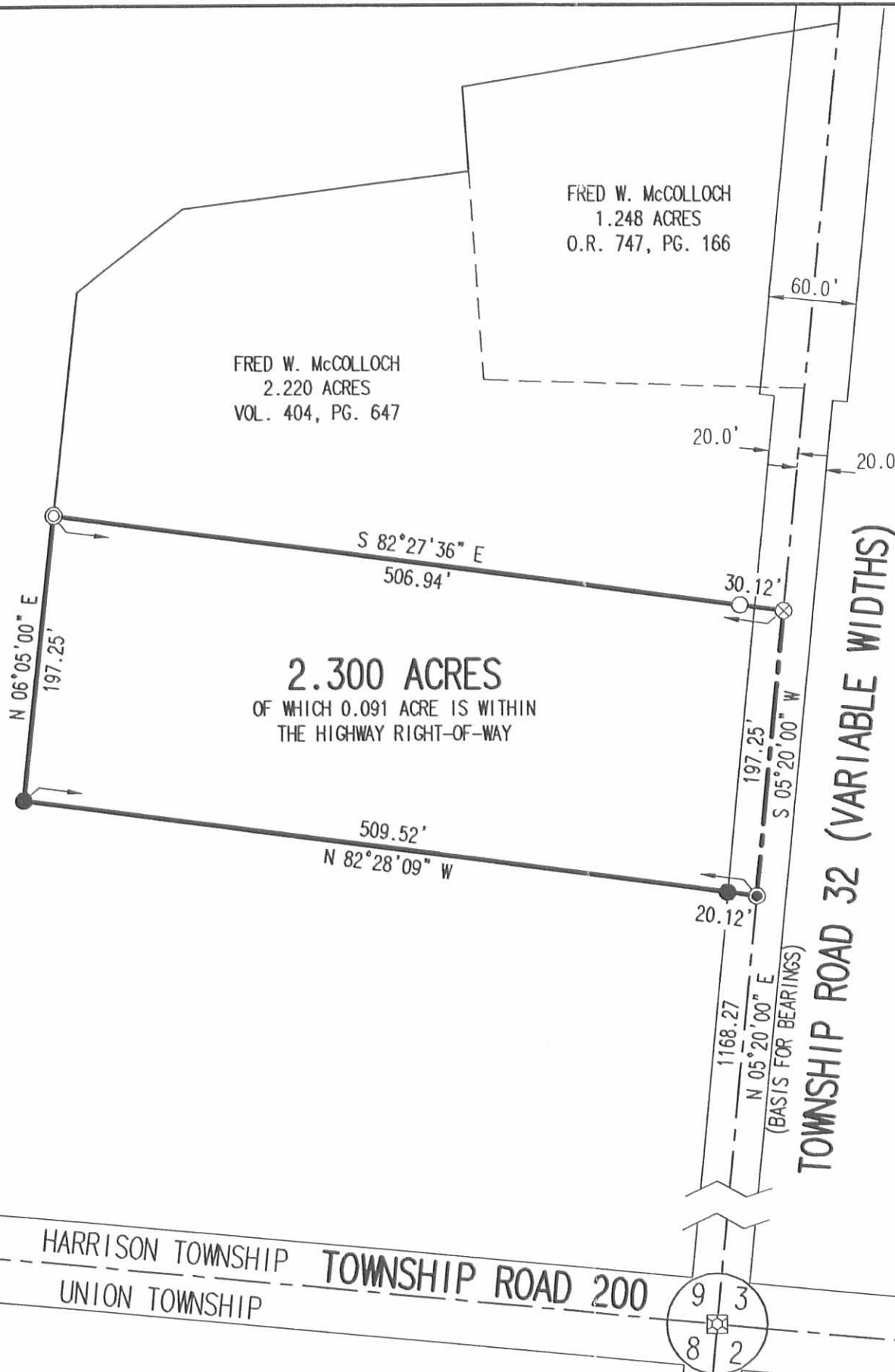


REV'D 9-14-06 SMM OK

LEGEND:

- ☒ STONE FOUND IN A MONUMENT BOX
- ⊗ RAILROAD SPIKE FOUND
- ⊙ 3/4 INCH IRON ROD FOUND
- 5/8 INCH IRON ROD SET
- ⊙ MAG NAIL SET
- 5/8 INCH IRON ROD FOUND

MARKIN MOREHEAD, LTD.
48.955 ACRES
O.R. 834, PG. 910



SURVEY OF 2.300 ACRES OUT OF THE
MARKIN MOREHEAD, LTD.
48.955 ACRE TRACT
OFFICIAL RECORD 834, PAGE 910
SECTION 9, TOWN 3, RANGE 14
HARRISON TOWNSHIP
LOGAN COUNTY, OHIO

SURVEYED BY:



Jeffrey I. Lee
JEFFREY T. LEE
PROFESSIONAL SURVEYOR 6359
SEPTEMBER 13, 2006

COPYRIGHT 2006 BY:
LEE SURVEYING & MAPPING CO., INC.
117 North Madriver Street
BELLEFONTAINE, OHIO 43311
(937) 593-7335

KSR D0906 3404056 L-3404-3

2 WORKING DAYS
BEFORE YOU DIG
CALL TOLL FREE 800-362-2764
OHIO UTILITIES PROTECTION SERVICE

INDEXED ON MAP
5251 38

REC'D 6-27-06 8M OK

Lee Surveying and Mapping Co., Inc.

Land Surveys • Topography • Subdivisions • Construction Layout

117 N. Madriver St.
Bellefontaine OH 43311



Phone: (937) 593-7335
Fax: (937) 593-7444

1975-2005 - 30 YEARS OF EXCELLENCE

**JACOBS, EWING AND EWING
48.955 ACRES**

Lying in Section 9, Town 3, Range 14, Harrison Township, Logan County, Ohio.

Being out of the Jenise D. Jacobs, Mark A. Ewing and Timothy J. Ewing original 51.552 acre tract as deeded and described in Official Record 791, Page 431, Tract II (reference Official Record 664, Page 136, Tract II) of the Logan County Records of Deeds and being more particularly described as follow:

Commencing at a stone found in a monument box on the southeast corner of Section 9 on the south line of Harrison Township at the intersection of the center-lines of Township Road 200 and Township Road 32.

THENCE, with the east line of Section 9 and the center-line of Township Road 32 (varied width), N 5°-20'-00" E, a distance of 637.24 feet to a railroad spike found at the TRUE POINT OF BEGINNING.

THENCE, with the north line of the Danielle R. Frost 16.04 acre tract (O.R. 747, Pg. 249), N 79°-30'-13" W, a distance of 1028.49 feet to a 3/4 inch iron rod found, passing a 5/8 inch iron rod set at 30.24 feet.

THENCE, with the east line of the George Hanson Deal, Trustee 95.76 acre tract (O.R. 800, Pg. 353) and the east line of the Don Downing etal 16.55 acre tract (O.R. 464, Pg. 601, Tract III), N 5°-31'-10" E, a distance of 2720.66 feet to a railroad spike found on the center-line of Township Road 204, passing a 5/8 inch iron rod set at 2693.47 feet.

THENCE, with the center-line of Township Road 204 (50 feet wide), the following two courses:

S 61°-19'-38" E, a distance of 20.56 feet to a railroad spike found.

S 74°-54'-42" E, a distance of 31.46 feet to a railroad spike found.

THENCE, with the west line of the Larry D. Rose 0.63 acre tract (O.R. 526, Pg. 60), S 5°-44'-18" W, a distance of 202.70 feet to a 5/8 inch iron rod set, passing a 5/8 inch iron rod set at 25.35 feet.

THENCE, with the south lines of the said 0.63 acre tract, the Jesse J. Meadows 0.64 acre tract (Vol. 369, Pg. 801), the Nancy Evans-Donley 0.64 acre tract (O.R. 405, Pg. 123), the Charles M. Feasel 0.64 acre tract (Vol. 360, Pg. 913), the Roger D. Evans 0.64 acre tract (O.R. 336, Pg. 700), and the Betty J. Smith 0.64 acre tract (Vol. 388, Pg. 602), S 74°-52'-56" E, a distance of 790.38 feet to a 3/4 inch iron rod found.

THENCE, with the west lines of the Steven J. Forster 1.04 acre tract (O.R. 538, Pg. 340) and the Wayne H. Linkinhoker 0.96 acre tract (O.R. 163, Pg. 827), S 5°-50'-00" W, a distance of 452.64 feet to a 5/8 inch iron rod found.

THENCE, N 84°-09'-47"W, a distance of 199.89 feet to a 5/8 inch iron rod set.

THENCE, S 5°-50'-56"W, a distance of 423.12 feet to a 5/8 inch iron rod set.

INDEXED ON MAP
5251 417-1

Lee Surveying and Mapping Co., Inc.

Land Surveys • Topography • Subdivisions • Construction Layout

117 N. Madriver St.
Bellefontaine OH 43311



Phone: (937) 593-7335
Fax: (937) 593-7444

1975-2005 - 30 YEARS OF EXCELLENCE

THENCE, S 84°-10'-00"E, a distance of 400.00 feet to a MAG nail set on the east line of Section 9 and the center-line of Township Road 32, passing a 5/8 inch iron rod set at 370.00 feet.

THENCE, with the east line of Section 9 and the center-line of Township Road 32, S 5°-50'-13" W, a distance of 450.36 feet to a MAG nail found.

THENCE, with the lines of the Fred W. McColloch 1.248 acre tract (O.R. 747, Pg. 166), the following two courses:

S 80°-28'-44" W, a distance of 262.80 feet to a 5/8 inch iron rod set, passing a 5/8 inch iron rod set at 31.11 feet.

S 4°-02'-45" E, a distance of 58.23 feet to a 5/8 inch iron rod set.

THENCE, with the lines of the Fred W. McColloch 2.22 acre tract (Vol. 404, Pg. 647), the following four (4) courses:

S 82°-32'-06" W, a distance of 197.13 feet to a 3/4 inch iron rod found;

S 52°-06'-18" W, a distance of 93.35 feet to a 1-1/4 inch "T" post found;

S 6°-05'-00" W, a distance of 154.68 feet to a 3/4 inch iron rod found;

S 82°-27'-36" E, a distance of 506.94 feet to a railroad spike found on the east line of Section 9 and the center-line of Township Road 32, passing a 5/8 inch iron rod set at 476.94 feet.

THENCE, with the east line of Section 9 and the center-line of Township Road 32, S 5°-20'-00" W, a distance of 728.28 feet to the point of beginning.

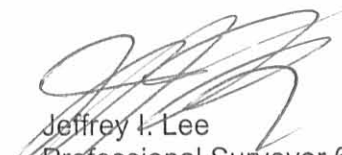
Containing 48.955 acres, of which 0.653 acre is within the highway right-of-way.

The basis for bearings is the east line of Section 9, being N 5°-20'-00" E, and all other bearings are from angles and distances measured in a field survey by Lee Surveying and Mapping Co., Inc. on August 22, 2002 and May 15, 2006.



ORIGINAL STAMP IN GREEN

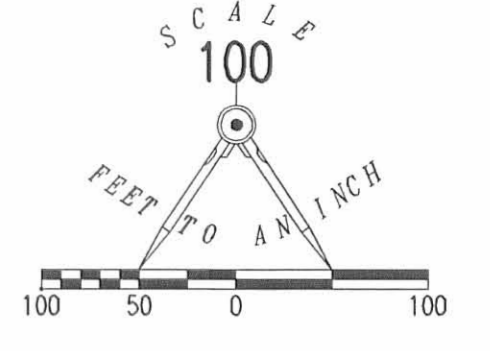
Description prepared by:


Jeffrey I. Lee
Professional Surveyor 6359
June 23, 2006

3404066

INDEXED ON MAP
525140-2

REV 027-00 SW, RL



- LEGEND:
- 5/8 INCH IRON ROD SET
 - 5/8 INCH IRON ROD FOUND
 - ⊗ 3/4 INCH IRON ROD FOUND
 - ⊙ 1 INCH IRON ROD FOUND
 - ⊕ 1-1/4 INCH "1" POST FOUND
 - MAG NAIL SET
 - ⊗ MAG NAIL FOUND
 - ⊙ RAILROAD SPIKE FOUND
 - ⊠ STONE FOUND IN A MONUMENT BOX

DON DOWNING ETAL
16.55 ACRES
O.R. 464, PG. 601
TRACT III

GEORGE HANSON DEAL, TRUSTEE
95.76 ACRES
O.R. 800, PG. 353

48.955 ACRES
OF WHICH 0.653 ACRE IS WITHIN
THE HIGHWAY RIGHTS-OF-WAY
JENISE D. JACOBS, MARK A. EWING
AND TIMOTHY J. EWING
ORIGINAL 51,552 ACRES
O.R. 791, PG. 431, TRACT III
O.R. 664, PG. 136, TRACT III

DANIELLE R. FROST
16.04 ACRES
O.R. 747, PG. 249

TOWNSHIP ROAD 204 (50')

TOWNSHIP ROAD 32 (VARIABLE WIDTHS)

HARRISON TOWNSHIP
UNION TOWNSHIP
TOWNSHIP ROAD 200

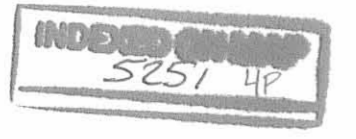
SURVEY OF 48.955 ACRES OUT OF THE
JENISE D. JACOBS, MARK A. EWING
AND TIMOTHY J. EWING
ORIGINAL 51,552 ACRE TRACT
OFFICIAL RECORD 791, PAGE 431, TRACT III
OFFICIAL RECORD 664, PAGE 136, TRACT III
SECTION 9, TOWN 3, RANGE 14
HARRISON TOWNSHIP
LOGAN COUNTY, OHIO



SURVEYED BY:
Jeffrey L. Lee
JEFFREY L. LEE
PROFESSIONAL SURVEYOR 6359
AUGUST 22, 2002
REVISED MAY 15, 2006

COPYRIGHT 2006 BY:
LEE SURVEYING & MAPPING CO., INC.
117 North Madriver Street
BELLEFONTAINE, OHIO 43311
(937) 593-7335

2 WORKING DAYS
BEFORE YOU DIG
CALL TOLL FREE 800-362-2764
OHIO UTILITIES PROTECTION SERVICE.

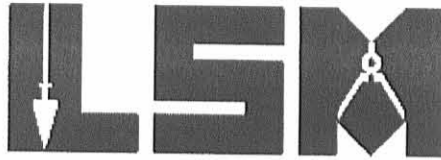


REC'D 5-11-07 SUM OK

Lee Surveying and Mapping Co., Inc.

Land Surveys • Topography • Subdivisions • Construction Layout

117 N. Madriver St.
Bellefontaine OH 43311



Phone: (937) 593-7335
Fax: (937) 593-7444

MARKIN MOREHEAD, LTD. 17.357 ACRES

Lying in Section 9, Town 3, Range 14, Harrison Township, Logan County, Ohio.

Being out of the Markin Morehead, Ltd., 48.955 acre tract as deeded and described in Official Record 834, Page 910 of the Logan County Records of Deeds and being more particularly described as follows:

Commencing on a stone found in a monument box at the southeast corner of Section 9, on the south line of Harrison Township and on the intersection of the center-lines of Township Road 200 and Township Road 32.

THENCE, with the east line of Section 9 and the center-line of Township Road 32 (variable widths), the following two courses:

N 5°20'-00"E, a distance of 1731.52 feet to a 3/4 inch iron rod found.

N 5°50'-13"E, a distance of 40.61 feet to a MAG nail found at the TRUE POINT OF BEGINNING.

THENCE, with the northerly line of the Fred W. McColloch 0.613 acre tract (O.R. 851, Pg. 177), S 84°-35'-40"W, a distance of 522.40 feet to a 5/8 inch iron rod found, passing a 5/8 inch iron rod found at 30.54 feet.

THENCE, N 4°03'-26"E, a distance of 85.00 feet to a 5/8 inch iron rod set.

THENCE, N 82°33'-52"W, a distance of 506.34 feet to a 5/8 inch iron rod set.

THENCE, with the east line of the George Hanson Deal, Trustee 95.76 acre tract (O.R. 800, Pg. 353), N 5°31'-10"E, a distance of 876.24 feet to a 5/8 inch iron rod found.

THENCE, with the south line of the Larry Rose 10.116 acre tract (O.R. 851, Pg. 987), S 84°09'-47"E, a distance of 626.10 feet to a 5/8 inch iron rod found.

THENCE, with the lines of the Timothy J. Ewing 2.599 acre tract (O.R. 833, Pg. 567), the following two courses:

S 5°50'-56"W, a distance of 423.12 feet to a 5/8 inch iron rod found.

S 84°10'-00"E, a distance of 400.00 feet to a MAG nail found on the east line of Section 9 and the center-line of Township Road 32 (60 feet wide), passing a 5/8 inch iron rod found at 370.00 feet.

THENCE, with the east line of Section 9 and the center-line of Township Road 32, S 5°50'-13"W, a distance of 450.36 feet to the point of beginning.

Containing 17.357 acres, of which 0.312 acre is within the highway right-of-way.

The basis for bearings is the east line of Section 9 at the intersection of center-lines of Township Road 200 and Township Road 32, being N 5°20'-00"E, and all other bearings are from angles and distances measured in a field survey by Lee Surveying and Mapping Co., Inc. on April 3, 2007, revised May 4, 2007.



ORIGINAL STAMP IN GREEN

Description prepared by:

William K. Bruce
Professional Surveyor 7437
April 4, 2007
Revised May 10, 2007

INDEXED ON MAP
5251 5D

3404037

REC'D 5-11-07 DMJ OK

DON DOWNING, ETAL
16.55 ACRES
O.R. 464, PG. 601
TRACT III

LARRY ROSE
10.116 ACRES
O.R. 851, PG. 987

GEORGE HANSON DEAL, TRUSTEE
95.76 ACRES
O.R. 800, PG. 353

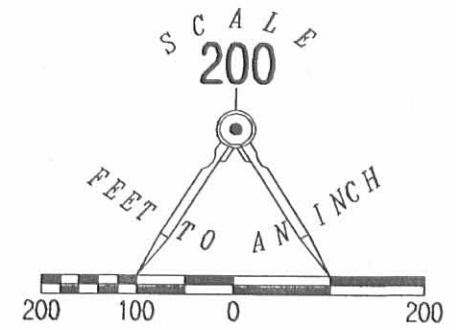
17.357 ACRES
OF WHICH 0.312 ACRE IS WITHIN
THE HIGHWAY RIGHT-OF-WAY

FRED W. McCOLLOCH
0.613 ACRE
O.R. 851, PG. 177

MARKIN MOREHEAD, LTD.
48.955 ACRES
O.R. 834, PG. 910

TOWNSHIP ROAD 32 (VARIABLE WIDTHS)

TOWNSHIP ROAD 200
HARRISON TOWNSHIP
UNION TOWNSHIP



LEGEND:

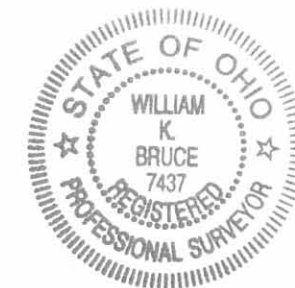
- ⊙ 3/4 INCH IRON ROD FOUND
- ⊗ MAG NAIL FOUND
- 5/8 INCH IRON ROD SET
- 5/8 INCH IRON ROD FOUND
- ⊠ STONE FOUND IN MONUMENT BOX

SURVEY OF 17.357 ACRES OUT OF THE
MARKIN MOREHEAD, LTD.
48.955 ACRE TRACT
OFFICIAL RECORD 834, PAGE 910
SECTION 9, TOWN 3, RANGE 14
HARRISON TOWNSHIP
LOGAN COUNTY, OHIO

SURVEYED BY:

William K. Bruce

WILLIAM K. BRUCE
PROFESSIONAL SURVEYOR 7437
APRIL 3, 2007
REVISED MAY 4, 2007



ORIGINAL STAMP IN GREEN

COPYRIGHT 2007 BY:
LEE SURVEYING & MAPPING CO., INC.
117 North Madriver Street
BELLEFONTAINE, OHIO 43311
(937) 593-7335
surveys@lsmcinc.us

KSR D0407 3404037REV 3404106A.ASC L-3404-3

2 WORKING DAYS
BEFORE YOU DIG
CALL TOLL FREE 800-362-2764
OHIO UTILITIES PROTECTION SERVICE

INDEXED ON MAP
5251 5P

EWING SURVEY

February 12, 1972

The following described real estate situated in Section 9, Town 3, Range 14, Harrison Township, Logan County, Ohio and being more particularly described as follows:

Beginning at an iron bar in the east line of Section 9 and the centerline of T.R. 32 that is S. 5° 50' W. 762.7 feet from an iron bar in the east line of Section 9 at the intersection of the centerline of T.R. 204 with the old centerline of T.R. 32 as shown on page 28 of Logan County Engineer Field Book No. 701; thence N. 84° 10' W. 200.0 feet to an iron bar, passing an iron bar at 20.0 feet; thence S. 5° 50' W. 140.0 feet to an iron bar; thence S. 84° 10' E. 200.0 feet to an iron bar in the centerline of T.R. 32, passing an iron bar at 180.0 feet; thence with said centerline N. 5° 50' E. 140.0 feet to the place of beginning.

Containing 0.64 acre, more or less.

The above described 0.64 acre being on the east side of Thomas Ewing's 62.5 acre tract.

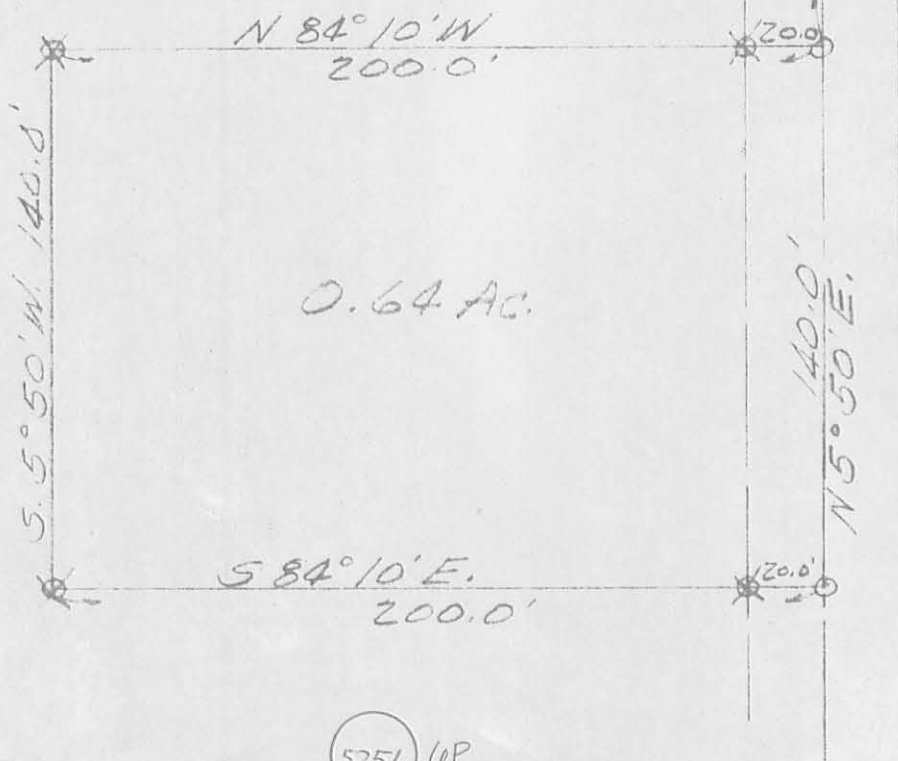


6D

5251

EWING SURVEY
 FEBRUARY 12, 1972
 SEC. 9 T. 3 R. 14
 HARRISON TOWNSHIP
 LOGAN COUNTY, OHIO

SCALE 1" = 50'
 O = R.I.R. SPIKE
 * = 3/4" IRON BAR
 REF: P. 28 F.B. 701



5251 OP

INDEXED ON MAP

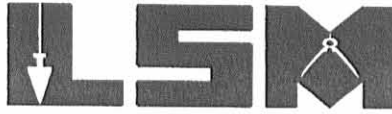
LESLIE H. GEEGLIN
 REG. SURVEYOR 5248

REC'D 10-17-06 SMY OK

Lee Surveying and Mapping Co., Inc.

Land Surveys • Topography • Subdivisions • Construction Layout

117 N. Madriver St.
Bellefontaine OH 43311



Phone: (937) 593-7335
Fax: (937) 593-7444

1975-2005 - 30 YEARS OF EXCELLENCE

**MARKIN MOREHEAD, LTD.
0.613 ACRE**

Lying in Section 9, Town 3, Range 14, Harrison Township, Logan County, Ohio.

Being out of the Markin Morehead, Ltd., 48.955 acre tract as deeded and described in Official Record 834, Page 910 of the Logan County Records of Deeds and being more particularly described as follows:

Commencing on a stone found in a monument box at the southeast corner of Section 9, on the south line of Harrison Township and on the intersection of the center-lines of Township Road 200 and Township Road 32.

THENCE, with the east line of Section 9 and the center-line of Township Road 32 (variable widths), N 5°-20'-00"E, a distance of 1772.13 feet to a MAG nail found at the TRUE POINT OF BEGINNING.

THENCE, with the lines of the Fred W. McColloch 1.248 acre tract (O.R. 747, Pg. 166), the following two courses:

S 80°-28'-44"W, a distance of 262.80 feet to a 5/8 inch iron rod found, passing a 5/8 inch iron rod found at 31.11 feet.

S 4°-02'-45"E, a distance of 58.23 feet to a 5/8 inch iron rod found.

THENCE, with the lines of the Fred W. McColloch 2.220 acre tract (Vol. 404, Pg. 647), the following three courses:

S 82°-32'-06"W, a distance of 197.13 feet to a 3/4 inch iron rod found.

S 52°-06'-18"W, a distance of 93.35 feet to a 1-1/4 inch "T" post found.

S 6°-05'-00"W, a distance of 154.68 feet to a 3/4 inch iron rod found.

THENCE, N 4°-03'-26"E, a distance of 289.82 feet to a 5/8 inch iron rod set.

THENCE, N 84°-35'-40"E, a distance of 522.40 feet to the point of beginning, passing 5/8 inch iron rods set at 259.34 feet and 491.86 feet.

Containing 0.613 acre, of which 0.001 acre is within the highway right-of-way.

The basis for bearings is the east line of Section 9, being N 5°-20'-00"E, and all other bearings are from angles and distances measured in a field survey by Lee Surveying and Mapping Co., Inc. on September 18, 2006.

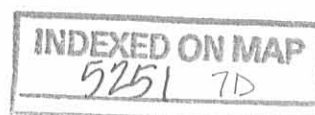


ORIGINAL STAMP IN GREEN

Description prepared by:

Jeffrey I. Lee
Jeffrey I. Lee
Professional Surveyor 6359
October 16, 2006

3404106

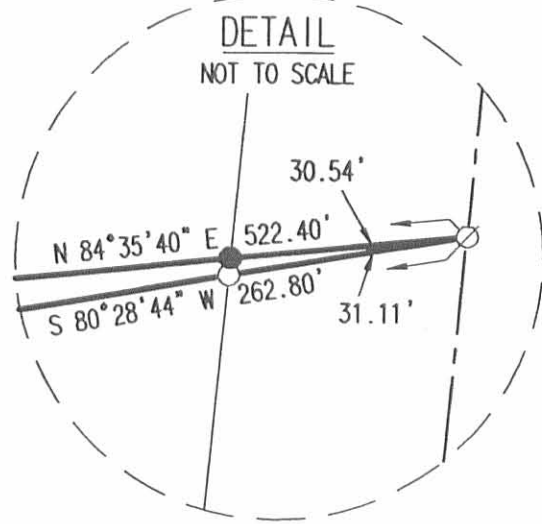
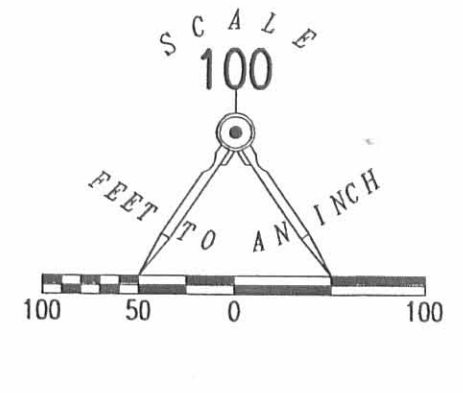
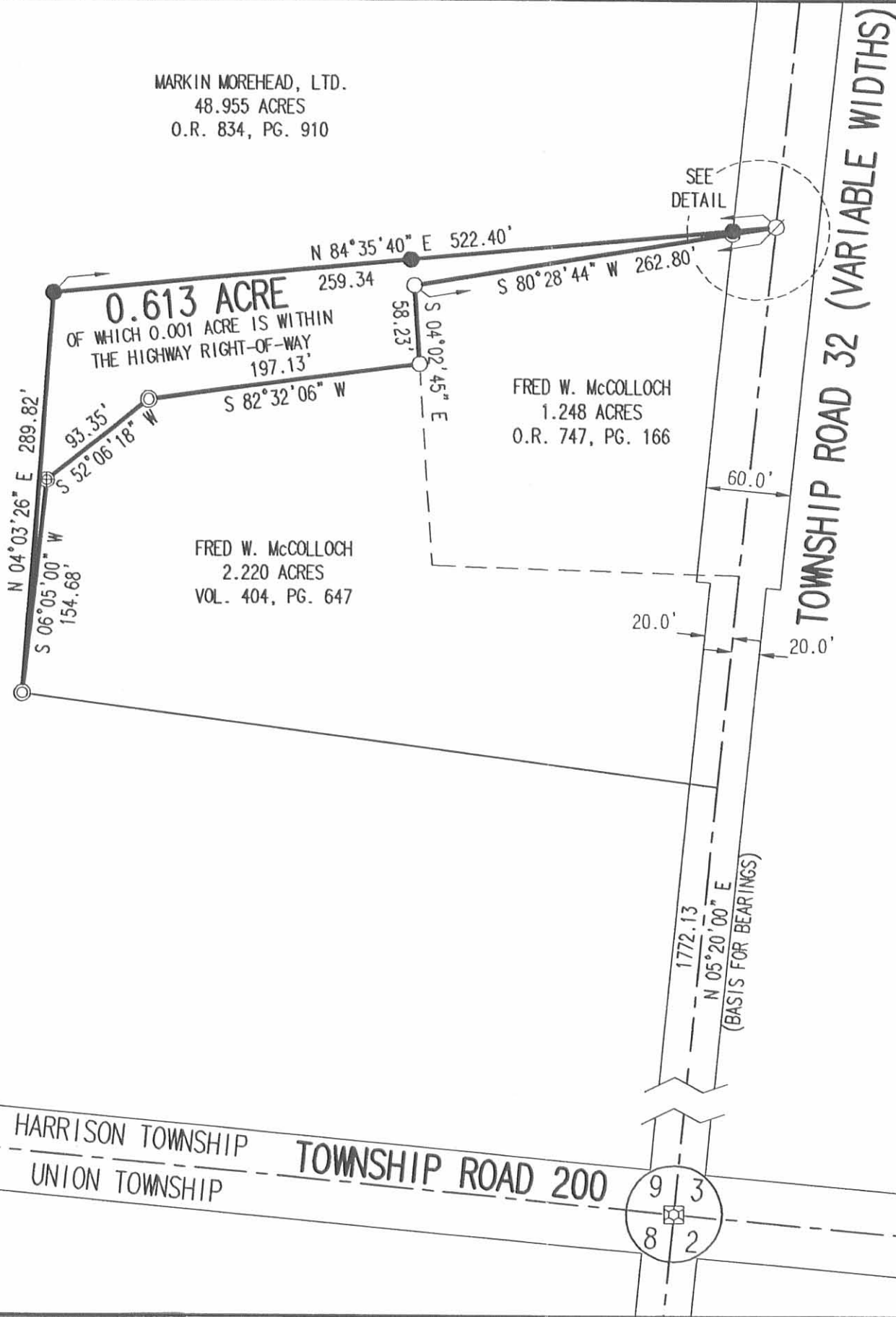


REC'D 10-17-06 SWY BK

LEGEND:

- ☒ STONE FOUND IN A MONUMENT BOX
- 5/8 INCH IRON ROD SET
- ⊗ MAG NAIL FOUND
- 5/8 INCH IRON ROD FOUND
- ⊙ 3/4 INCH IRON ROD FOUND
- ⊕ 1-1/4 INCH "T" POST FOUND

MARKIN MOREHEAD, LTD.
48.955 ACRES
O.R. 834, PG. 910



SURVEY OF 0.613 ACRE OUT OF THE
MARKIN MOREHEAD, LTD.
48.955 ACRE TRACT
OFFICIAL RECORD 834, PAGE 910
SECTION 9, TOWN 3, RANGE 14
HARRISON TOWNSHIP
LOGAN COUNTY, OHIO

SURVEYED BY:

Jeffrey I. Lee



JEFFREY I. LEE
PROFESSIONAL SURVEYOR 6359
SEPTEMBER 18, 2006
REVISED OCTOBER 16, 2006

COPYRIGHT 2006 BY:
LEE SURVEYING & MAPPING CO., INC.
117 North Madriver Street
BELLEFONTAINE, OHIO 43311
(937) 593-7335

ORIGINAL STAMP IN GREEN

KSR D0906 3404106 3404106.ASC L-3404-3

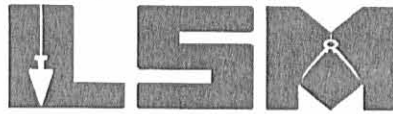
2 WORKING DAYS
BEFORE YOU DIG
CALL TOLL FREE 800-362-2764
OHIO UTILITIES PROTECTION SERVICE.

INDEXED ON MAP
5251 7P

Lee Surveying and Mapping Co., Inc.

Land Surveys • Topography • Subdivisions • Construction Layout

117 N. Madriver St.
Bellefontaine OH 43311



Phone: (937) 593-7335
Fax: (937) 593-7444

EWING 51.731 ACRES

Lying in Section 9, Town 3, Range 14, Harrison Township, Loan County, Ohio.

Being out of the Thomas J. Ewing original 62-1/2 acre tract and 14.78 acre tract as deeded and described in Official Record 233, Page 671, Tract II and Tract III of the Logan County Records of Deeds and being more particularly described as follow:

Beginning at a stone found in a monument box on the southeast corner of Section 9 on the south line of Harrison Township at the intersection of the center-lines of Township Road 200 and Township Road 32.

THENCE, with the east line of Section 9 and the center-line of Township Road 32 (varied width), N 5°-20'-00" E, a distance of 637.24 feet to a railroad spike found at the TRUE POINT OF BEGINNING.

THENCE, with the north line of the Pamela J. Bosetti 16.04 acre tract (O.R. 548, Pg. 753), N 79°-30'-13" W, a distance of 1028.49 feet to a 3/4 inch iron rod found, passing a 5/8 inch iron rod set at 30.24 feet.

THENCE, with the east line of the George Hanson Deal 95.76 acre tract (O.R. 349, Pg. 354) and the east line of the Thelma Joy Downing Matthews 16.55 acre tract (O.R. 464, Pg. 601, Tract III), N 5°-31'-10" E, a distance of 2720.66 feet to a railroad spike found, passing a 5/8 inch iron rod set at 2693.47 feet.

THENCE, with the center-line of Township Road 204 (50 feet wide), S 61°-19'-38" E, a distance of 20.56 feet to a railroad spike found.

THENCE, with the center-line of Township Road 204, S 74°-54'-42" E, a distance of 31.46 feet to a railroad spike found.

THENCE, with the west line of the Larry D. Rose 0.63 acre tract (O.R. 526, Pg. 60), S 5°-44'-18" W, a distance of 202.70 feet to a 5/8 inch iron rod set, passing a 5/8 inch iron rod set at 25.35 feet.

THENCE, with the south lines of the said 0.63 acre tract, the Jesse J. Meadows 0.64 acre tract (Vol. 369, Pg. 801), the Nancy Evans-Donley 0.64 acre tract (O.R. 405, Pg. 123), the Charles M. Feasel 0.64 acre tract (Vol. 360, Pg. 913), the Roger D. Evans 0.64 acre tract (O.R. 336, Pg. 700), and the Betty J. Smith 0.64 acre tract (Vol. 388, Pg. 602), S 74°-52'-56" E, a distance of 790.38 feet to a 3/4 inch iron rod found.

THENCE, with the west lines of the Steven J. Forster 1.04 acre tract (O.R. 538, Pg. 340), the Wayne H. Linkinhoker 0.96 acre tract (O.R. 163, Pg. 827), the Timothy J. Ewing 0.64 acre tract (Vol. 341, Pg. 458) and the Rebecca R. Tanger 0.64 acre tract (O.R. 162, Pg. 17), S 5°-50'-00" W, a distance of 732.75 feet to a 5/8 inch iron rod set.

THENCE, with the south line of the said Tanger 0.64 acre tract, S 84°-10'-00" E, a distance of 200.00 feet to a railroad spike found, passing a 5/8 inch iron rod set at 170.00 feet.

THENCE, with the east line of Section 9 and the center-line of Township Road 32, S 5°-50'-13" W, a distance of 624.47 feet to a MAG nail set.

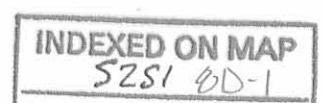
THENCE, S 80°-28'-44" W, a distance of 257.43 feet to a 5/8 inch iron rod set, passing a 5/8 inch iron rod set at 31.11 feet.

THENCE, S 4°-02'-45" E, a distance of 28.09 feet to a 5/8 inch iron rod set.

THENCE, with the lines of the Fred W. McColloch 2.22 acre tract (Vol. 404, Pg. 647), the following four (4) courses:

S 82°-32'-06" W, a distance of 197.13 feet to a 3/4 inch iron rod found;

S 52°-06'-18" W, a distance of 93.35 feet to a 1-1/4 inch "T" post found;



Lee Surveying and Mapping Co., Inc.

Land Surveys • Topography • Subdivisions • Construction Layout

117 N. Madriver St.
Bellefontaine OH 43311



Phone: (937) 593-7335
Fax: (937) 593-7444

S 6°-05'-00" W, a distance of 154.68 feet to a 3/4 inch iron rod found;

S 82°-27'-36" E, a distance of 506.82 feet to a railroad spike found, passing a 5/8 inch iron rod set at 476.82 feet.

THENCE, with the east line of Section 9 and the center-line of Township Road 32, S 5°-20'-00" W, a distance of 728.28 feet to the point of beginning.

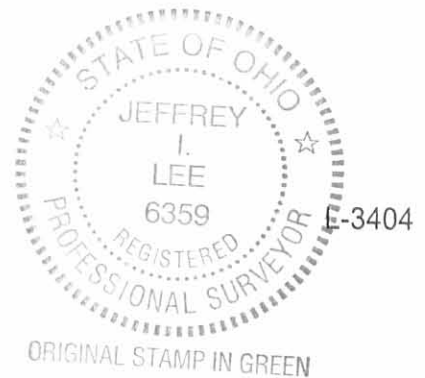
Containing 51.731 acres, of which 0.783 acre is within the highway right-of-way.

The basis for bearings is the east line of Section 9, being N 5°-20'-00" E, and all other bearings are from angles and distances measured in a field survey by Lee Surveying and Mapping Co., Inc. on August 22, 2002.

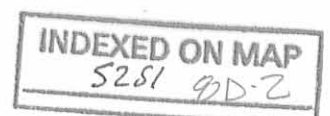
Description prepared by:

A handwritten signature in black ink, appearing to read 'Jeffrey I. Lee', is written over the typed name.

Jeffrey I. Lee
Professional Surveyor 6359
September 20, 2002



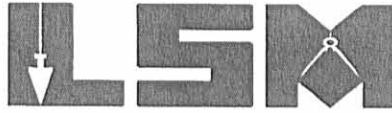
ORIGINAL STAMP IN GREEN



Lee Surveying and Mapping Co., Inc.

Land Surveys • Topography • Subdivisions • Construction Layout

117 N. Madriver St.
Bellefontaine OH 43311



Phone: (937) 593-7335
Fax: (937) 593-7444

EWING 1.069 ACRES

Lying in Section 9, Town 3, Range 14, Harrison Township, Loan County, Ohio.

Being out of the Thomas J. Ewing original 62-1/2 acre tract as deeded and described in Official Record 233, Page 671, Tract II of the Logan County Records of Deeds and being more particularly described as follow:

Beginning at a stone found in a monument box on the southeast corner of Section 9 on the south line of Harrison Township at the intersection of the center-lines of Township Road 200 and Township Road 32.

THENCE, with the east line of Section 9 and the center-line of Township Road 32, N 5°-20'-00" E, a distance of 1519.12 feet to a railroad spike found at the TRUE POINT OF BEGINNING.

THENCE, with the lines of the Fred W. McColloch 2.22 acre tract (Vol. 404, Pg. 647), the following two (2) courses:

N 88°-20'-30" W, a distance of 221.11 feet to a 5/8 inch iron rod found, passing a 5/8 inch iron rod found at 30.10 feet;

N 4°-02'-45" W, a distance of 172.38 feet to a 5/8 inch iron rod set.

THENCE, N 80°-28'-44" E, a distance of 257.43 feet to a MAG nail set, passing a 5/8 inch iron rod set at 226.32 feet.

THENCE, with the east line of Section 9 and the center-line of Township Road 32, (60 feet wide), S 5°-50'-13" W, a distance of 9.50 feet to a 3/4 inch iron rod found.

THENCE, with the east line of Section 9 and the center-line of Township Road 32, S 5°-20'-00" W, a distance of 212.40 feet to the point of beginning.

Containing 1.069 acres, of which 0.147 acre is within the highway right-of-way.

The basis for bearings is the east line of Section 9, being N 5°-20'-00" E, and all other bearings are from angles and distances measured in a field survey by Lee Surveying and Mapping Co., Inc. on August 22, 2002.

Description prepared by:

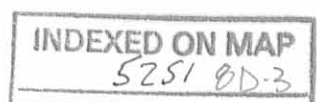
A handwritten signature in black ink, appearing to read 'Jeffrey I. Lee', is written over the typed name and title.

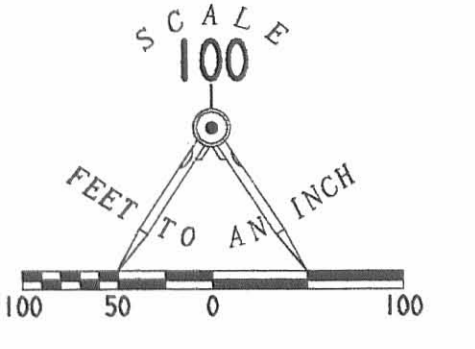
Jeffrey I. Lee
Professional Surveyor 6359
September 20, 2002



L-3404

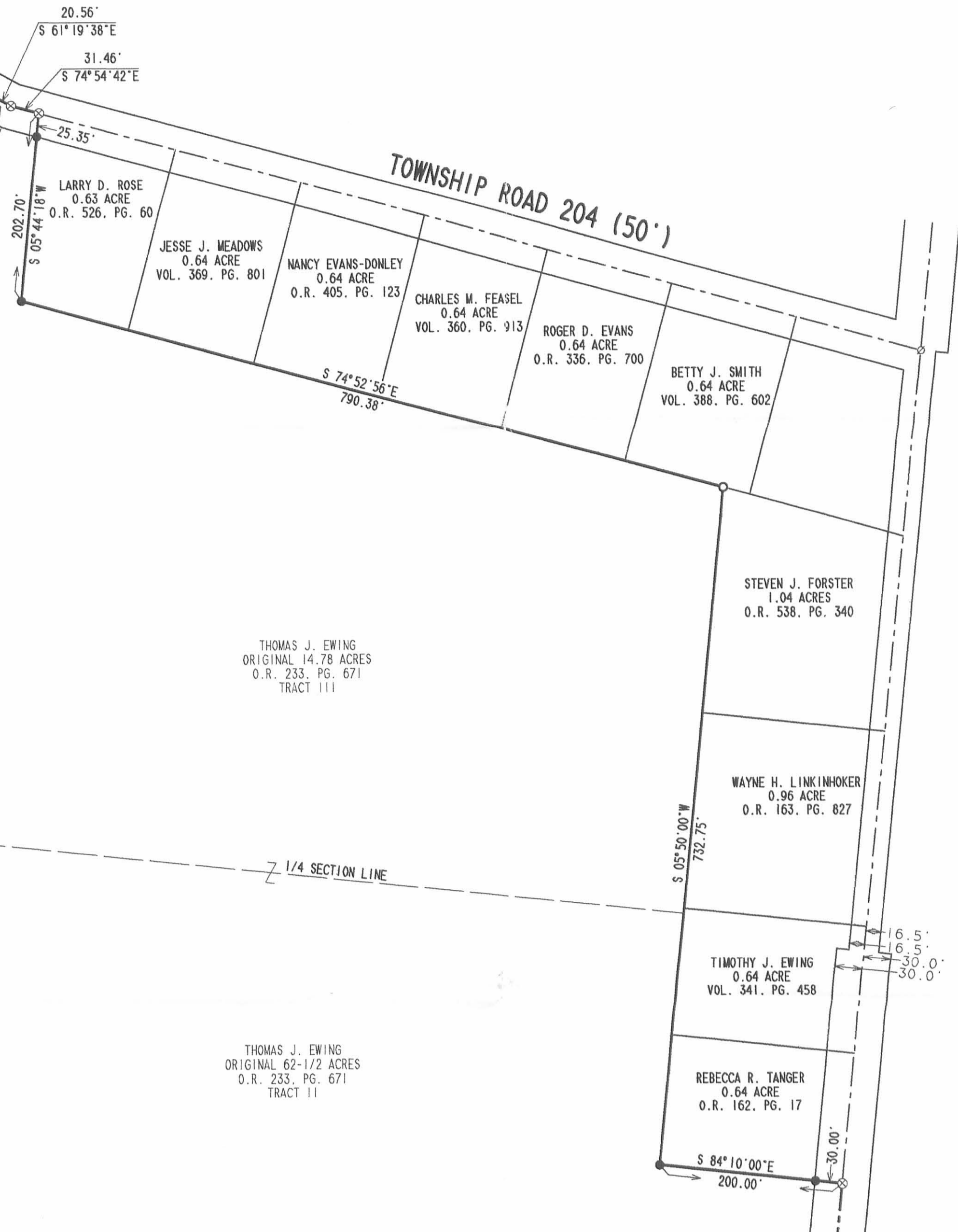
ORIGINAL STAMP IN GREEN





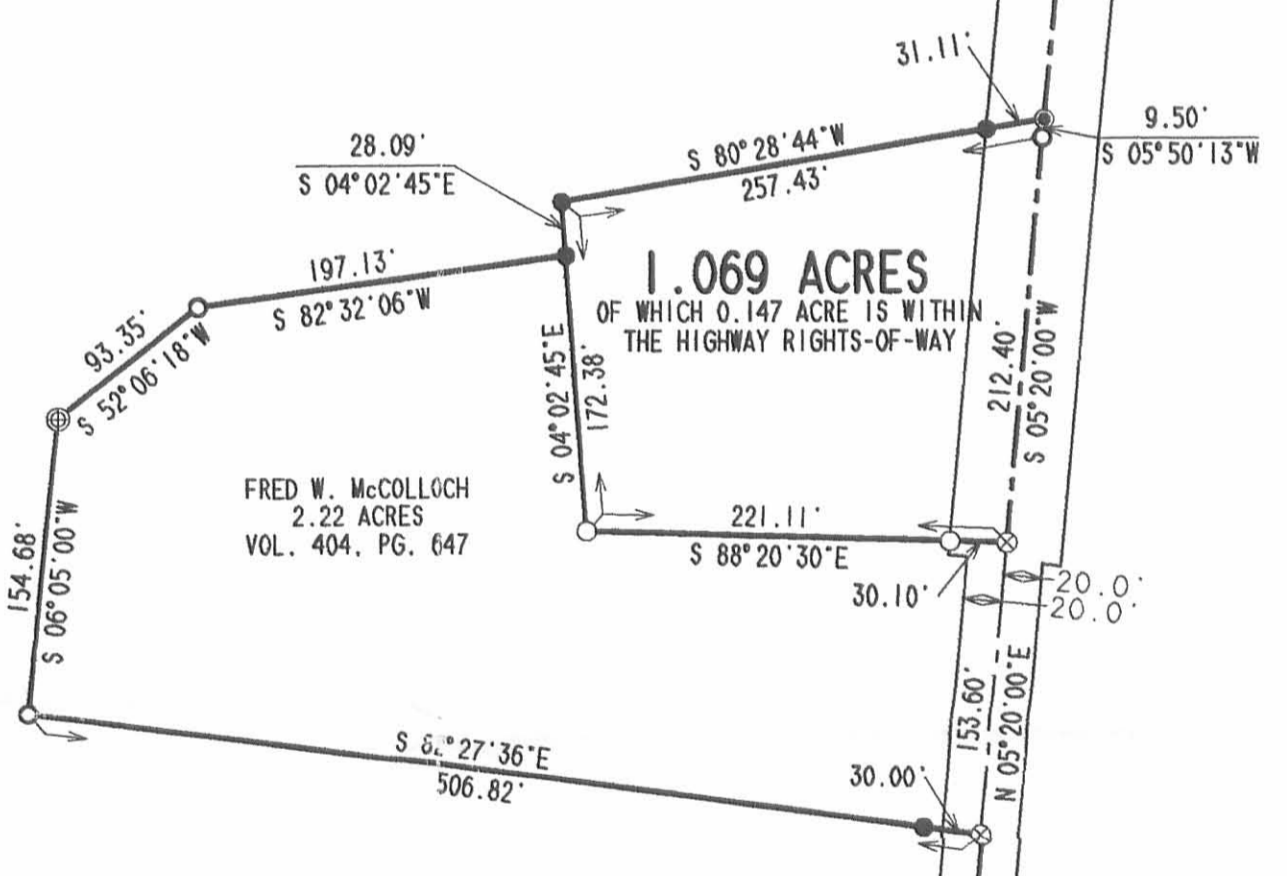
- LEGEND**
- 5/8 INCH IRON ROD SET
 - 5/8 INCH IRON ROD FOUND
 - 3/4 INCH IRON ROD FOUND
 - 1 INCH IRON ROD FOUND
 - ⊕ 1-1/4 INCH "T" POST FOUND
 - MAG NAIL SET
 - ⊗ RAILROAD SPIKE FOUND
 - ⊠ STONE FOUND IN A MONUMENT BOX

THELMA JOY DOWNING MATTHEWS
16.55 ACRES
O.R. 464, PG. 601
TRACT III



GEORGE HANSON DEAL
95.76 ACRES
O.R. 349, PG. 354

51.731 ACRES
OF WHICH 0.783 ACRE IS WITHIN
THE HIGHWAY RIGHTS-OF-WAY



PAMELA J. BOSETTI
16.04 ACRES
O.R. 548, PG. 753

SURVEY OF TWO TRACTS OUT
OF THE THOMAS J. EWING
ORIGINAL 62-1/2 ACRE AND 14.78 ACRE TRACT
OFFICIAL RECORD 233, PAGE 671
TRACT II AND TRACT III
SECTION 9, TOWN 3, RANGE 14
HARRISON TOWNSHIP
LOGAN COUNTY, OHIO



SURVEYED BY:
Jeffrey I. Lee
JEFFREY I. LEE
PROFESSIONAL SURVEYOR 6359
AUGUST 22, 2002

COPYRIGHT 2002 BY:
LEE SURVEYING & MAPPING CO., INC.
117 North Madriver Street
BELLEFONTAINE, OHIO 45311
(937) 593-7335

2 WORKING DAYS
BEFORE YOU DIG
CALL TOLL FREE 800-362-2764
OHIO UTILITIES PROTECTION SERVICE

HARRISON TOWNSHIP
UNION TOWNSHIP
TOWNSHIP ROAD 200

Lee Surveying and Mapping Co., Inc.

Land Surveys • Topography • Subdivisions • Construction Layout

117 N. Madriver St.
Bellefontaine OH 43311



Phone: (937) 593-7335
Fax: (937) 593-7444

EWING 1.248 ACRES

Lying in Section 9, Town 3, Range 14, Harrison Township, Logan County, Ohio

Being all of the Thomas J. Ewing, etal 1.069 acre tract and part of the 51.731 acre tract as deeded and described in Official Record 664, Page 136, Tract I and Tract II of the Logan County Records of Deeds and being more particularly described as follows:

Beginning at a stone found in a monument box at the south east corner of Section 9, and on the intersection of center-lines of Township Road 32 (variable widths) and Township Road 200 (30 feet wide) also being the north line of Union Township.

THENCE, with east line of Section 9 and the center-line of Township Road 32, N 5°-20'-00"E, a distance of 1519.12 feet a railroad spike found at THE TRUE POINT OF BEGINNING.

THENCE, with the north line of Fred W. McColloch and Rebecca Jane McColloch 2.220 acre tract (Vol. 404, Pg.647), N 88°-20'-30"W, a distance of 221.11 feet to a 5/8 inch iron rod found, passing a 5/8 inch iron rod found at 30.00 feet.

THENCE, with continuing with the north line of said 2.220 acre tract, N 4°-02'-45"W, a distance of 202.52 feet to a 5/8 inch iron rod set, passing a 5/8 inch iron rod found at a corner of said 1.069 acre tract at 172.38 feet.

THENCE, N 80°-28'-44"E, a distance of 262.80 feet to a MAG nail found, passing a 5/8 inch iron rod found at 231.69 feet.

THENCE, with the center-line of Township Road 32, S 5°-50'-13"W, a distance of 40.61 feet to a 3/4 inch iron pipe found, passing a MAG nail found at a corner of said 1.069 acre tract at 31.11 feet.

THENCE, with the east line of Section 9 and the center-line of Township Road 32, S 5°-20'-00"W, a distance 212.40 feet to the point of beginning.

Containing 1.248 acre of which 0.179 acre is within the highway right-of-way.

The basis for bearings is the east line of Section 9 and the center-line of Township Road 32 being N 5°-20'-00"E, and all other bearings are from angles and distances measured in a field survey by Lee Surveying and Mapping Co., Inc. on October 13, 2004.

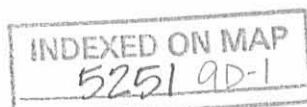


ORIGINAL STAMP IN GREEN

Description prepared by:

Jeffrey I. Lee
Professional Surveyor 6359
October 13, 2004
Revised October 19, 2004

3404104



Lee Surveying and Mapping Co., Inc.

Land Surveys • Topography • Subdivisions • Construction Layout

117 N. Madriver St.
Bellefontaine OH 43311



Phone: (937) 593-7335
Fax: (937) 593-7444

EWING 25' INGRESS/EGRESS EASEMENT

Lying in Section 9, Town 3, Range 14, Harrison Township, Logan County, Ohio

Being a 25 feet wide ingress/egress easement over the Thomas J. Ewing, etal 1.069 acre tract and 51.731 acre tract as deeded and described in Official Record 664, Page 136, Tract I and Tract II of the Logan County Records of Deeds and being more particularly described as follows:

Beginning at a stone found in a monument box at the southeast corner of Section 9 and on the intersection of center-lines of Township Road 32 (variable widths) and Township Road 200 (30 feet wide) also being the north line of Union Township.

THENCE, with east line of Section 9 and the center-line of Township Road 32, N 5°-20'-00"E, a distance of 1731.52 feet a 3/4 inch iron pipe found.

THENCE, with the center-line of Township Road 32, N 5°-50'-13"E, a distance 9.50 feet to a MAG nail found, being the TRUE POINT OF BEGINNING for this easement.

THENCE, with the center-line of the 25.00 feet wide easement, S 80°-28'-44"W, a distance of 257.43 feet to a 5/8 inch iron rod found at the northwest corner of the said 1.069 acre tract, passing a 5/8 inch iron rod found at 31.11 feet and thence terminate.

The basis for bearings is the east line of Section 9 being N 5°-20'-00"E, and all other bearings are from angles and distances measured in a field survey by Lee Surveying and Mapping Co., Inc. on October 13, 2004.



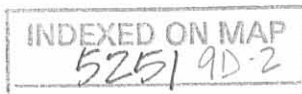
ORIGINAL STAMP IN GREEN

Description prepared by:

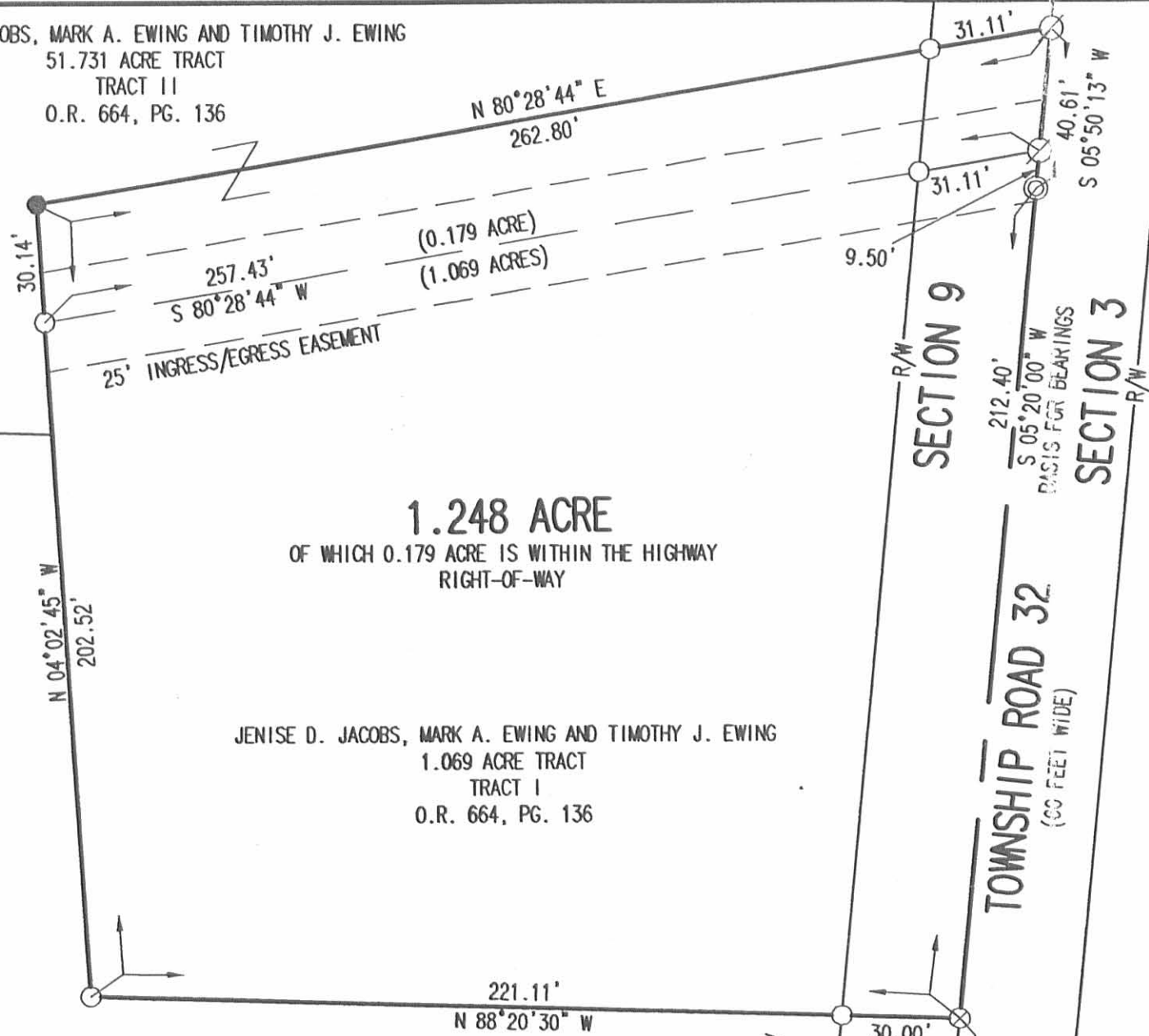
A handwritten signature in black ink, appearing to read 'Jeffrey I. Lee'.

Jeffrey I. Lee
Professional Surveyor 6359
October 13, 2004
Revised October 19, 2004

3404104



JENISE D. JACOBS, MARK A. EWING AND TIMOTHY J. EWING
 51.731 ACRE TRACT
 TRACT II
 O.R. 664, PG. 136



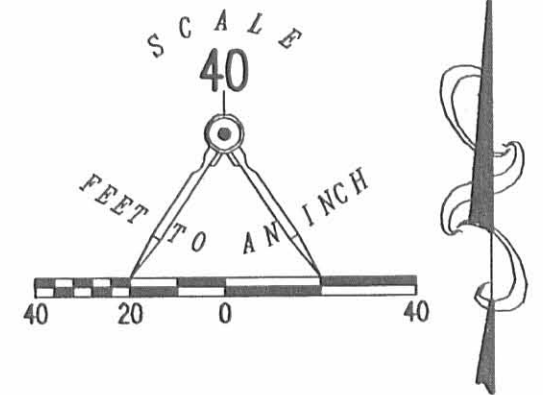
1.248 ACRE
 OF WHICH 0.179 ACRE IS WITHIN THE HIGHWAY
 RIGHT-OF-WAY

JENISE D. JACOBS, MARK A. EWING AND TIMOTHY J. EWING
 1.069 ACRE TRACT
 TRACT I
 O.R. 664, PG. 136

FRED W. McCOLLOCH AND REBECCA JANE McCOLLOCH
 2.220 ACRE TRACT
 VOL 404, PG. 647

LEGEND

- 5/8 INCH IRON ROD SET
- 5/8 INCH IRON ROD FOUND
- ⊗ MAG NAIL FOUND
- ⊠ MONUMENT BOX FOUND WITH STONE INSIDE
- ⊗ RAILROAD SPIKE FOUND
- ⊙ 3/4 INCH IRON PIPE FOUND



A SURVEY OF A
 1.248 ACRE TRACT OUT OF THE
 THOMAS J. EWING ETAL
 ALL 1.069 ACRE TRACT (TRACT I) AND
 PART OF THE 51.731 ACRE TRACT (TRACT II)
 OFFICIAL RECORD 664, PAGE 136
 SECTION 9, TOWN 3, RANGE 14
 HARRISON TOWNSHIP
 LOGAN COUNTY, OHIO

SURVEYED BY:



Jeffrey I. Lee
 JEFFREY I. LEE
 PROFESSIONAL SURVEYOR 6359
 OCTOBER 13, 2004
 REVISED OCTOBER 19, 2004

COPYRIGHT 2004 BY:
 LEGURVEYING & MAPPING CO., INC.
 117 North Madriver Street
 BELLEFONTAINE, OHIO 43311
 (937) 593-7335

ORIGINAL STAMP IN GREEN

ADW D413 3404104 L-3404104-3

2 WORKING DAYS
BEFORE YOU DIG
 CALL TOLL FREE **800-362-2764**
 OHIO UTILITIES PROTECTION SERVICE.

INDEXED ON MAP
 5251 9D

REC'D 4-12-04 SUM OK

Lee Surveying and Mapping Co., Inc.

Land Surveys • Topography • Subdivisions • Construction Layout

117 N. Madriver St.
Bellefontaine OH 43311



Phone: (937) 593-7335
Fax: (937) 593-7444

JACOBS 1.055 ACRES TRACT A

Lying in Section 9, Town 3, Range 14, Harrison Township, Logan County, Ohio.

Being out of the Jenise D. Jacobs, Mark A. Ewing and Timothy J. Ewing, 51.731 acre tract as deeded and described in Official Record 664, Page 136, Tract II of the Logan County Records of Deeds and being more particularly described as follows:

Beginning at a 1 inch iron bar found on the east line of Section 9, at the intersection of center-lines of Township Road 204 (60 feet wide) and Township Road 32 (60 feet wide).

THENCE, with east line of Section 9 and the center-line of Township Road 32, S 5°-50'-13"W, a distance of 902.75 feet to a railroad spike found at THE TRUE POINT OF BEGINNING.

THENCE, with east line of Section 9 and the center-line of Township Road 32, S 5°-50'-13"W, a distance of 197.79 feet to a MAG nail set.

THENCE, N 89°-23'-47"W, a distance of 222.06 feet to a 5/8 inch iron rod set, passing a 5/8 inch iron rod set at 30.13 feet.

THENCE, N 5°-50'-13"E, a distance of 218.03 feet to a 5/8 inch iron rod set.

THENCE, with an extension of and with the south line of Rebecca R. Tanger 0.64 acre tract (O.R. 162, Pg. 17), S 84°-10'-00"E, a distance of 221.13 feet to the point of beginning, passing a 5/8 inch iron rod set at 21.14 feet and a 5/8 iron rod set at 191.13 feet.

Containing 1.055 acres of which 0.137 acre is within the highway right-of-way.

The basis for bearings is the east line of Section 9 being S 5°-50'-13"W, and all other bearings are from angles and distances measured in a field survey by Lee Surveying and Mapping Co., Inc. on April 5, 2004.

Description prepared by:



ORIGINAL STAMP IN GREEN

Jeffrey I. Lee
Professional Surveyor 6359
April 7, 2004

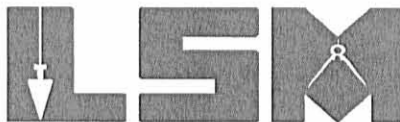
3404034

INDEXED ON MAP
5251 10D-1

REC'D 4-12-04 SML/OK
Lee Surveying and Mapping Co., Inc.

Land Surveys • Topography • Subdivisions • Construction Layout

117 N. Madriver St.
Bellefontaine OH 43311



Phone: (937) 593-7335
Fax: (937) 593-7444

**JACOBS
1.055 ACRE
TRACT B**

Lying in Section 9, Town 3, Range 14, Harrison Township, Logan County, Ohio.

Being out of the Jenise D. Jacobs, Mark A. Ewing and Timothy J. Ewing, 51.731 acre tract as deeded and described in Official Record 664, Page 136, Tract II of the Logan County Records of Deeds and being more particularly described as follows:

Beginning at a 1 inch iron bar found on the east line of Section 9 at the intersection of center-lines of Township Road 204 (60 feet wide) and Township Road 32 (60 feet wide).

THENCE, with the east line of Section 9 and the center-line of Township Road 32, S 5°-50'-13"W, a distance of 1100.54 feet to a MAG nail set at THE TRUE POINT OF BEGINNING.

THENCE, with the east line of Section 9 and the center-line of Township Road 32, S 5°-50'-13"W, a distance of 197.79 feet to a MAG nail set.

THENCE, S 85°-27'-34"W, a distance of 224.81 feet to a 5/8 inch iron rod set, passing a 5/8 inch iron rod set at 30.50 feet.

THENCE, N 5°-50'-13"E, a distance of 218.03 feet to a 5/8 inch iron rod set.

THENCE, S 89°-23'-47"E, a distance of 222.06 feet to the point of beginning, passing a 5/8 inch iron rod set at 191.93 feet.

Containing 1.055 acre of which 0.137 acre is within the highway right-of-way.

The basis for bearings is the east line of Section 9 being S 5°-50'-13"W, and all other bearings are from angles and distances measured in a field survey by Lee Surveying and Mapping Co., Inc. on April 5, 2004.

Description prepared by:

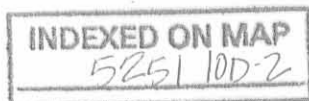


ORIGINAL STAMP IN GREEN

A handwritten signature in black ink, appearing to read 'Jeffrey I. Lee'.

Jeffrey I. Lee
Professional Surveyor 6359
April 7, 2004

3404034



REC'D 4-12-04 SMM OK
Lee Surveying and Mapping Co., Inc.

Land Surveys • Topography • Subdivisions • Construction Layout

117 N. Madriver St.
Bellefontaine OH 43311



Phone: (937) 593-7335
Fax: (937) 593-7444

**JACOBS
1.055 ACRE
TRACT C**

Lying in Section 9, Town 3, Range 14, Harrison Township, Logan County, Ohio.

Being out of the Jenise D. Jacobs, Mark A. Ewing and Timothy J. Ewing, 51.731 acre tract as deeded and described in Official Record 664, Page 136, Tract II of the Logan County Records of Deeds and being more particularly described as follows:

Beginning at a 1 inch iron bar found on the east line of Section 9 at the intersection of center-lines of Township Road 204 (60 feet wide) and Township Road 32 (60 feet wide).

THENCE, with the east line of Section 9 and the center-line of Township Road 32, S 5°-50'-13"W, a distance of 1298.33 feet to a MAG nail set at THE TRUE POINT OF BEGINNING.

THENCE, with east line of Section 9 and the center-line of Township Road 32, S 5°-50'-13"W, a distance of 197.79 feet to a MAG nail set.

THENCE, S 80°-28'-44"W, a distance of 229.32 feet to a 5/8 inch iron rod set, passing a 5/8 inch iron rod set at 31.11 feet.

THENCE, N 5°-50'-13"E, a distance of 218.03 feet to a 5/8 inch iron rod set.

THENCE, N 85°-27'-34"E, a distance of 224.81 feet to the point of beginning, passing a 5/8 inch iron rod set at 194.31 feet.

Containing 1.055 acre of which 0.137 acre is within the highway right-of-way.

The basis for bearings is the east line of Section 9 being S 5°-50'-13"W, and all other bearings are from angles and distances measured in a field survey by Lee Surveying and Mapping Co., Inc. on April 5, 2004.

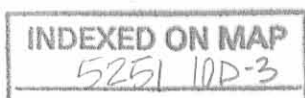
Description prepared by:



ORIGINAL STAMP IN GREEN

A handwritten signature in black ink, appearing to read 'Jeffrey I. Lee'.
Jeffrey I. Lee
Professional Surveyor 6359
April 7, 2004

3404034



TOWNSHIP ROAD 204
(60 FEET WIDE)

SCALE
60

FEET TO AN INCH

60 30 0 60



JENISE D. JACOBS,
MARK A. EWING AND
TIMOTHY J. EWING
51.731 ACRE
O.R. 664, PG. 136
TRACT II

REBECCA R. TANGER
0.64 ACRE
O.R. 162, PG. 17

LEGEND

- 5/8 INCH IRON ROD SET
- ⊙ MAG NAIL SET
- ⊗ 1 INCH IRON BAR FOUND
- ⊗ RAILROAD SPIKE FOUND

21.14'

S 84°10'00"E
221.13'

SECTION 9
SECTION 3

TOWNSHIP ROAD 32 (60 FEET WIDE)

TRACT A
1.055 ACRES
OF WHICH 0.137 ACRE IS WITHIN
THE HIGHWAY RIGHT-OF-WAY

N 05°50'13"E
218.03'

222.06'
N 89°23'47"W

TRACT B
1.055 ACRES
OF WHICH 0.137 ACRE IS WITHIN
THE HIGHWAY RIGHT-OF-WAY

N 05°50'13"E
218.03'

224.81'
S 85°27'34"W

TRACT C
1.055 ACRES
OF WHICH 0.137 ACRE IS WITHIN
THE HIGHWAY RIGHT-OF-WAY

N 05°50'13"E
218.03'

229.32'
S 80°28'44"W

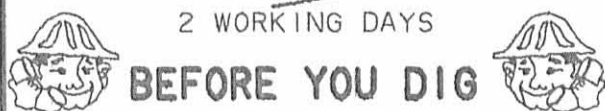
SECTION 9
SECTION 3

A SURVEY OF
THREE TRACTS OUT OF THE
JENISE D. JACOBS,
MARK A. EWING AND
TIMOTHY J. EWING
51.731 ACRE TRACT
OFFICIAL RECORD 664, PAGE 136
TRACT II
SECTION 9, TOWN 3, RANGE 14
HARRISON TOWNSHIP
LOGAN COUNTY, OHIO

SURVEYED BY:

JEFFREY I. LEE
PROFESSIONAL SURVEYOR 6359
APRIL 7, 2004

COPYRIGHT 2004 BY:
LEE SURVEYING & MAPPING CO., INC.
117 North Madriver Street
BELLEFONTAINE, OHIO 43311
(937) 593-7335



CALL TOLL FREE 800-362-2764
OHIO UTILITIES PROTECTION SERVICE.

INDEXED ON MAP ORIGINAL STAMP IN GREEN
5251 10P ADW

D412 3404034A L-3404034-3