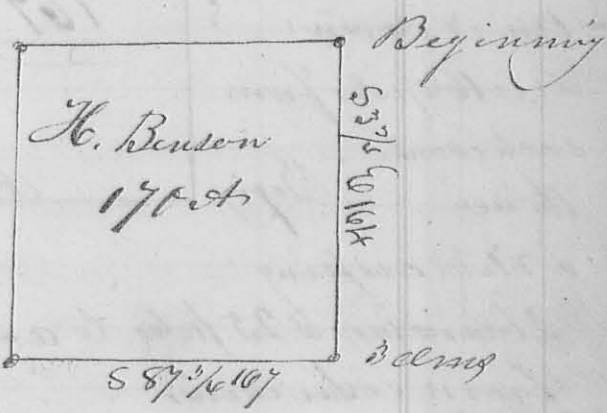


163
 187. N. cuping a prairie 162 poles a white oak
 188 N 302 a. n. 128 E 33 L. thence N 162 poles a white
 oak 83 E 16 L original golden corner in the north line
 of the sec. - thence with said line 189 E 162 poles to the be-
 ginning containing 164 acres
 Gorden Broughton }
 Abraham James } De Mearns, 65 46

11th Mo. 1832 Survey #201
 Wannah Benson } Surveyed the east half and the west half
 201 } of the N E q^r of Sec. 26, R 12 E T 4 S, Harder
 County for Wannah Benson - Beginning in
 the north line of said sec. 84 poles west of the E corner
 thereof a bar oak 106 4 L - a maple 156 N 28 L. thence
 S 3/4 E crossing the Sandusky road at 46 poles, 164 poles to
 3 rods - thence S 87 1/2 W, cuping said road, 167 poles
 a beech 158 N 7 L
 a beech 58 5/8 E 17 L
 thence N 3/4 W 163 poles
 a beech 157 1/2 N 20 L
 a beech 169 1/2 E 23 L
 in the north line of
 the sec - thence with
 said line 187 1/2 E
 167 poles to the beginning
 containing 170 acres
 Philip Hackethorn }
 Samuel Simson } De Mearns, 65 L C.

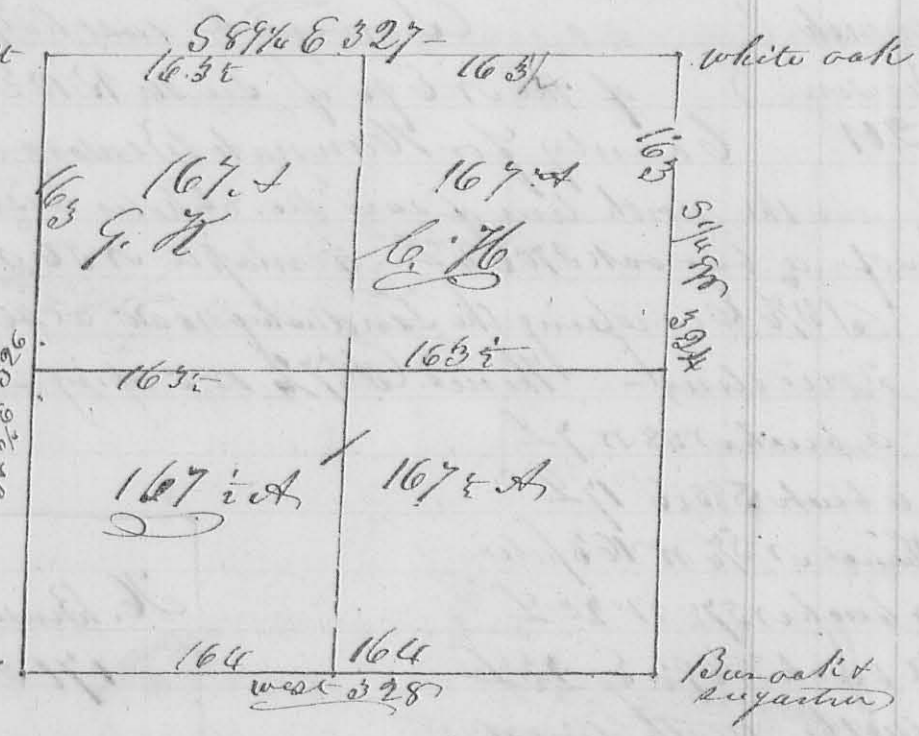


11 Mo. 1832 Survey #202
 Geo Kellerman } Surveyed divided Sec. 12 & 14
 Christy Houtz }
 + others } a. n. for Christy Houtz, George
 Kellerman, & others, Beginning at the corner
 of Sec 11, 12, 17 & 18 a white oak original corner
 down; thence between Secs 12 & 14 N 3/4 E crossing a
 branch at 252 poles, 326 poles to the N. W. corner of sec
 12, the original corner down, set a stake - thence

(8288)

164 thence S 89 1/4 E, crossing a road at 234 poles, one at 260 poles) 327 poles to the corner of Sec 6+12, a white oak S 7 1/2 W 62 No or 74 E 26 L. thence S 7 1/2 W, crossed a road at 78 poles one at 120 poles, a branch at 236 poles & one at 312 poles) 324 poles to the corner of Sec 5+6, 11+12 a bur oak or 37 W 26 L a sugar tree N 60 E 10 L now down) thence between p 11+12 west crossing Jack's run at 40 poles a small pond at 138) 328 poles to the

beginning
The 1st division
line begins
at the original
gr. sec corner in
the south line of
the sec. a white
oak (S 47 E 28 L
(the other bearing
tree is down)
it is 164 poles from
each corner
thence
crossing



2 branches) 325 poles to a stake in the north line 163 1/2 poles from either corner

The 2nd division line begins at the original gr. sec corner in the east line of the sec. 163 poles from the e. r. e. corner of the sec a red oak or 84 E 21 L a white or 76 W 14 L thence or 89 1/2 W, cross, a branch) 327 poles to a white oak or 23 E 20 L a white oak 10 E 16 L in the west line 163 poles from the e. r. w. corner of said sec

Henry McPherson }
John Hautz }
John McPherson }
C. S. L. H.

John Hautz }
Jacob Good }
N. M. R. }
12th mo. Dec. 7 1832 Survey of 203
Survey the South half of sec 4
for John Hautz and Jacob
Good Beginning in the north line at the S. E. corner