

March 1835

213

then S 78° 118 1/2 poles to stem & White Oak then N 115° 200 poles to stake in the North line of the Survey, then N 78° E 118 1/2 poles to the beginning (at an ash & Hickory) containing 150 acres - Also

Hay's

Surveyed for Hay's as follows, beginning at the stem & White Oak corner in the fore going lot, then S 78° 118 1/2 poles to a stake in a prairie, then N 115° 200 poles to a stake in a prairie, then N 78° E 118 1/2 poles to a stake NW corner to Kaskias lot, then N 115° 200 poles to the beginning containing 150 acres

John Hopkins Surveyor

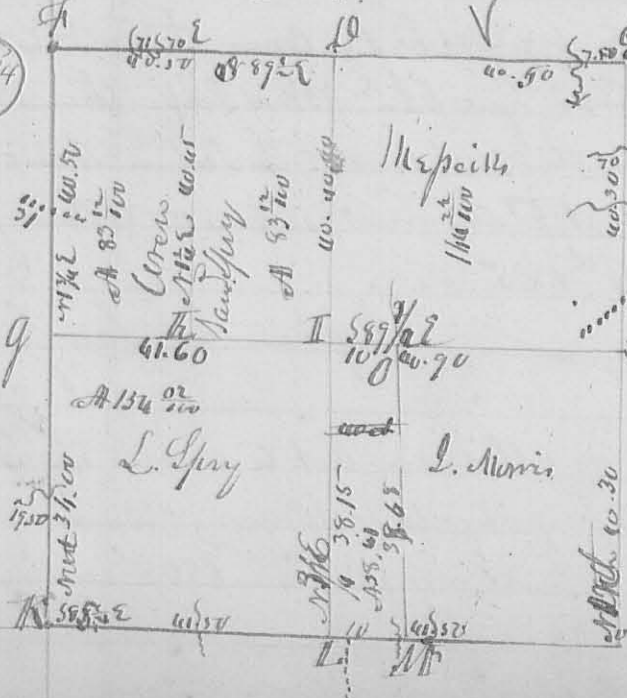
N<sup>o</sup> 267 Surveyed March 7<sup>th</sup> 1835 for Isaac Morris the E quarter of Sec 23 R 14 M 1. beginning at the S corner of the section, then North West chain ending creek at 2 & 5 chains to a White Oak 18 1/2 D 130 E 23 links, and White Oak 18 1/2 D 138 E 23 links, then North 40 ch 55 links to a White Oak 15 1/2 D West 26 links, and same 18 1/2 D S 47 W 30 links, then South 20 chains 80 links to original pt. corner on the South line, then East 40 ch 50 links to the beginning, containing 166 <sup>24</sup> 1/2 acres also Surveyed off the North side of said quarter section for Isaac Morris beginning the North East corner then West 20 ch 55 links to the Northwest corner then South 20 ch 50 links to a White Oak 15 1/2 D N 60 E 30 links, same 36 1/2 D S 24 E 27 links, then East 40 ch 55 links to a stake in a prairie, then North 9 ch 80 links to the beginning containing 40 acres

John Hopkins Surveyor S. C.

N<sup>o</sup> 268

S 18 5/4 R 12 M 1

(8344)



the course & distance of the lines of this Survey are marked on the plat. Description of corner as follows. At Section Corner S 2 White Oak 16 1/2 D N 26 E 21 D  
 C Sect corner. 2 White Oak 12 1/2 D N 30 W  
 20 links, same S 65 E 12, at E White O.  
 12 1/2 D S 63 E 46 White Oak 16 1/2 D S 67 E  
 39 1/2 W. At Sect corner White Oak 52 W  
 by L. Same N 10 E 34 links, at g.  
 Red Oak N 70 E 130 links, original  
 A g. corner. To White Oak 12 1/2