

ECID 11-4-96 SMY BK



Lee Surveying and Mapping Co., Inc.



Farm Surveys • Lot Surveys • Topography • Subdivisions • Construction Layout

117 NORTH MADRIVER STREET
BELLEFONTAINE, OHIO 43311

(937) 593-7335
FAX (937) 593-7444

JESSLYN J. ETGEN 5.000 ACRE TRACT

Lying in the northwest quarter of Section 24, Town 3, Range 14, Harrison Township, Logan County, Ohio.

Being out of the Jesslyn J. Etgen, original 80.00 acre tract, as deeded and described in Official Record 168, Page 89 of the Logan County Records of Deeds and being more particularly described as follows:

Beginning a 1 inch iron rod found at the southeast corner of the northwest quarter of Section 24 and on the center-line of County Highway 13.

THENCE, with the south line of the said northwest quarter and the center-line of County Highway 13 (60 feet wide), N 85°-27'-00" W, a distance of 467.00 feet to a railroad spike set.

THENCE, N 04°-36'-17" E, a distance of 466.40 feet to a 5/8 inch iron rod set.

THENCE, S 85°-27'-00" E, a distance of 467.00 feet to a 5/8 inch iron rod set.

THENCE, with the east line of the northwest quarter of Section 24, and the west line of the Albert G. Wallace 44.53 acres, (O.R. 121, Pg. 381), S 04°-36'-17" W, a distance of 466.40 feet to the point of beginning.

Containing 5.000 acres of which 0.322 acre is within the highway right-of-way.

The basis for bearings is the south line of the northwest quarter of Section 24 being N 85°-27'-00" W, and all other bearing are from angles and distances measured in a field survey by Lee Surveying and Mapping Co., Inc. on October 25, 1996.

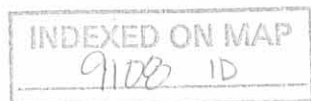
Description prepared by:

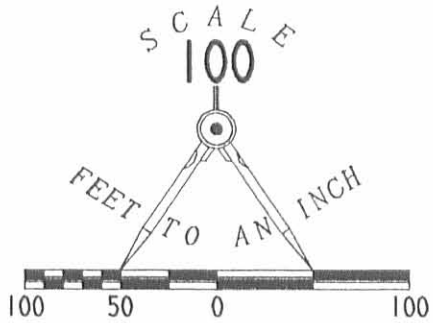


[Handwritten Signature]
Jeffrey I. Lee
Professional Surveyor 6359
November 1, 1996

L 2462

ORIGINAL STAMP IN GREEN





LEGEND

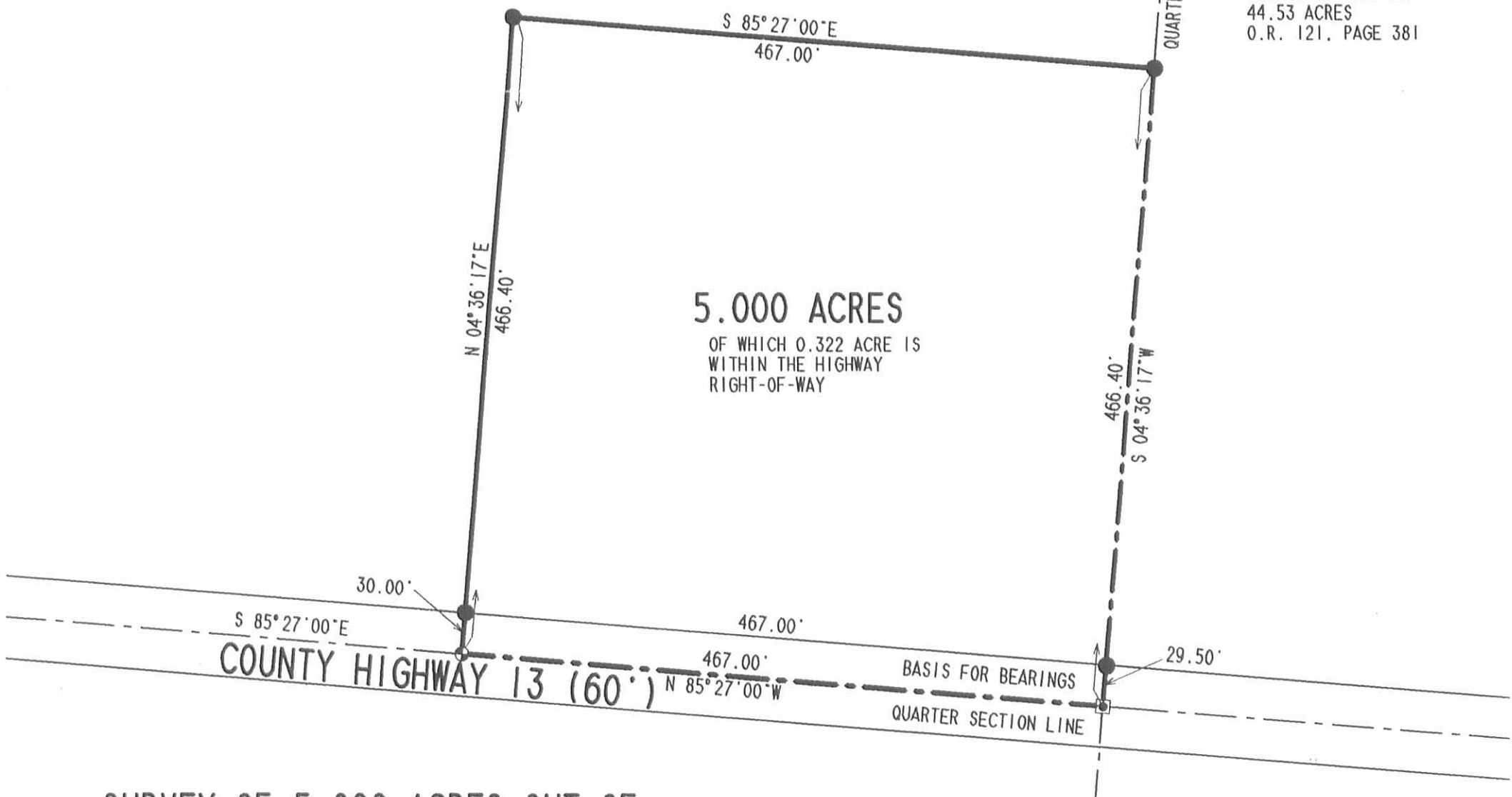
- ⊕ R.R. SPIKE SET
- 5/8" IRON ROD SET
- ⊠ 1" IRON ROD FOUND IN MONUMENT BOX ASSEMBLY
- ⊕ 8" CONCRETE CORNER POST FOUND

JESSLYN J. ETGEN
80.0 AC.
O.R. 168, PG. 89

SECTION 19, TOWN 2, RANGE 15
SECTION 24, TOWN 3, RANGE 14

QUARTER SECTION LINE N 04° 36' 17" E

ALBERT G. WALLACE
44.53 ACRES
O.R. 121, PAGE 381



SURVEY OF 5.000 ACRES OUT OF
THE JESSLYN J. ETGEN 80.00 ACRE TRACT
OFFICIAL RECORD 168, PAGE 89
N.W. QUARTER SECTION 24, TOWN 3, RANGE 14
HARRISON TOWNSHIP, LOGAN COUNTY, OHIO

SURVEYED BY:

Jeffrey I. Lee
JEFFREY I. LEE
PROFESSIONAL SURVEYOR 6359
OCTOBER 25, 1996



ORIGINAL STAMP IN GREEN

COPYRIGHT 1996 BY:
LEE SURVEYING & MAPPING CO., INC.
117 North Madriver Street
BELLEFONTAINE, OHIO 43311
(937) 593-7335

2 WORKING DAYS
BEFORE YOU DIG
CALL TOLL FREE **800-362-2764**
OHIO UTILITIES PROTECTION SERVICE.

INDEXED ON MAP
9108 1P

D 292 JETGEN2

L-2462-3