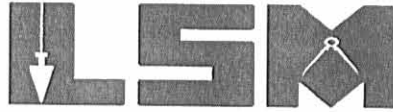


REV'D 1-11-06 GMY OK

Lee Surveying and Mapping Co., Inc.

Land Surveys • Topography • Subdivisions • Construction Layout

117 N. Madriver St.
Bellefontaine OH 43311



Phone: (937) 593-7335
Fax: (937) 593-7444

1975-2005 - 30 YEARS OF EXCELLENCE

**MORGAN
2.066 ACRES**

Lying in Section 29, Town 3, Range 14, Harrison Township, Logan County, Ohio.

Being out of the Samuel T. Morgan, Trustee of the Samuel T. Morgan Trust Agreement N/A Dated 10-9-00, 30.04 acre tract as deeded and described in Official Record 806, Page 534, Tract II of the Logan County Records of Deeds and being more particularly described as follows:

Beginning at a MAG nail set at the southeast corner of Section 29 on the center-line of Ohio Route 47 (60 feet wide).

THENCE, with the south line of Section 29 within the right-of-way of Ohio Route 47, N 83°-36'-07"W, a distance of 300.00 feet to a MAG nail set.

THENCE, N 5°-28'-30"E, a distance of 300.00 feet to a 5/8 inch iron rod set, passing a 5/8 inch iron rod set on the north right-of-way of Ohio Route 47 at 27.40 feet.

THENCE, S 83°-36'-07"E, a distance of 300.00 feet to a MAG nail set on the east line of Section 29, passing a 5/8 inch iron rod set at 261.50 feet, passing the center-line of Township Road 31 (50 feet wide) at 286.50 feet.

THENCE, with the east line of Section 29 within the right-of-way of Township Road 31, S 5°-28'-30"W, a distance of 300.00 feet to the point of beginning.

Containing 2.066 acres, of which 0.317 acre is within the highway rights-of-way.

The basis for bearings is the east line of Section 29, being S 5°-28'-30"W, and all other bearings are from angles and distances measured in a field survey by Lee Surveying and Mapping Co., Inc. on January 9, 2006.



ORIGINAL STAMP IN GREEN

Description prepared by:

Jeffrey I. Lee
Professional Surveyor 6359
January 10, 2006

L-4172

INDEXED ON MAP
9314 1D

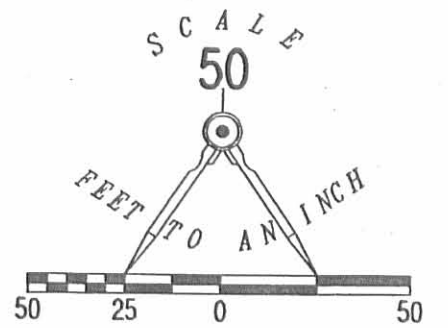
REC'D 1-11-06 SMY OK

SAMUEL T. MORGAN, TRUSTEE
OF THE SAMUEL T. MORGAN TRUST
AGREEMENT N/A DATED 10-9-00
30.04 ACRES
O.R. 806, PG. 534
TRACT 11

2.066 ACRES
OF WHICH 0.317 ACRE IS WITHIN
THE HIGHWAY RIGHTS-OF-WAY

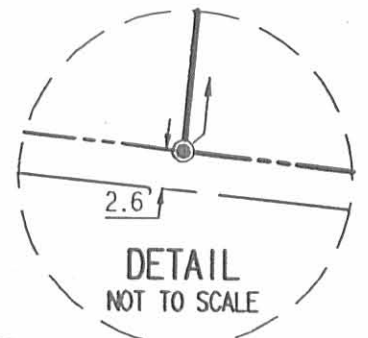
SAMUEL T. MORGAN, TRUSTEE
OF THE SAMUEL T. MORGAN TRUST
AGREEMENT N/A DATED 10-9-00
30.04 ACRES
O.R. 806, PG. 534
TRACT 11

**SURVEY OF 2.066 ACRES OUT OF THE
SAMUEL T. MORGAN, TRUSTEE
OF THE SAMUEL T. MORGAN TRUST
AGREEMENT N/A DATED 10-9-00
30.04 ACRE TRACT
OFFICIAL RECORD 806, PAGE 534
TRACT 11
SECTION 29, TOWN 3, RANGE 14
HARRISON TOWNSHIP
LOGAN COUNTY, OHIO**



LEGEND:

- MAG NAIL SET
- 5/8 INCH IRON ROD SET



SECTION LINE
CENTER-LINE

47

27.40'
SEE
DETAIL

(60')

300.00'
N 83°36'07" W

S 83°36'07" E
300.00'

TOWNSHIP ROAD 31 (50')

CENTER-LINE
S 05°28'30" W
(BASIS FOR BEARINGS)

29 23
28 22



ORIGINAL STAMP IN GREEN

SURVEYED BY:

[Signature]
JEFFREY I. LEE
PROFESSIONAL SURVEYOR 6359
JANUARY 9, 2006

COPYRIGHT 2006 BY:
LEE SURVEYING & MAPPING CO., INC.
117 North Madriver Street
BELLEFONTAINE, OHIO 43311
(937) 593-7335

KSR D0106 4172125 L-4172-3

2 WORKING DAYS
BEFORE YOU DIG
CALL TOLL FREE **800-362-2764**
OHIO UTILITIES PROTECTION SERVICE

INDEXED ON MAP
9314 1P

REC'D 5-23-00 SMJ OK ✓

Lee Surveying and Mapping Co., Inc.

Land Surveys • Topography • Subdivisions • Construction Layout

117 N. Madriver St.
Bellefontaine OH 43311



Phone: (937) 593-7335
Fax: (937) 593-7444

WINNER-MORGAN FARMS, LTD 10.217 ACRES

Lying in Section 29, Town 3, Range 14, Harrison Township, Logan County, Ohio.

Being out of the Winner-Morgan Farms, Ltd. 247.13 acre tract as deeded and described in Official Record 397, Page 800 of the Logan County Records of Deeds and being more particularly described as follows:

Beginning at a 5/8 inch iron rod set on the southwest corner of the southeast quarter of Section 29, within the right-of-way of State Route 47.

THENCE, with the south line of Section 29, S 83°-36'-11" E, a distance of 816.96 feet to a 5/8 inch iron rod set at the TRUE POINT OF BEGINNING.

THENCE, N 3°-10'-27" W, a distance of 744.34 feet to a 5/8 inch iron rod set, passing a 5/8 inch iron rod set at 38.45 feet.

THENCE, N 87°-25'-38" E, a distance of 627.59 feet to a 5/8 inch iron rod set.

THENCE, with the west line of the Albert E. Hockley III 8.47 acre tract (O.R. 137, Pg. 757), S 5°-32'-45" W, a distance of 831.92 feet to a MAG nail set, passing a 5/8 inch iron rod set at 806.67 feet.

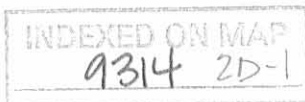
THENCE, with the south line of Section 29, N 83°-36'-11" W, a distance of 508.51 feet to the point of beginning.

Containing 10.217 acres, of which 0.408 acre is in the highway right-of-way.

The basis for bearings is the south line of Section 29, being N 83°-36'-11" W, and all other bearings are from angles and distances measured in a field survey by Lee Surveying and Mapping Co., Inc. on May 2, 2000.

Description prepared by:

William K. Bruce
Professional Surveyor 7437
May 8, 2000



ORIGINAL STAMP IN GREEN

L-2937

REC'D 5-23-00 SMY OK ✓

Lee Surveying and Mapping Co., Inc.

Land Surveys • Topography • Subdivisions • Construction Layout

117 N. Madriver St.
Bellefontaine OH 43311



Phone: (937) 593-7335
Fax: (937) 593-7444

WINNER-MORGAN FARMS, LTD 20 FEET WIDE INGRESS/EGRESS EASEMENT

Lying in Section 29, Town 3, Range 14, Harrison Township, Logan County, Ohio.

Being a 20 feet wide ingress/egress easement through the Winner-Morgan Farms, Ltd. 247.13 acre tract as deeded and described in Official Record 397, Page 800 of the Logan County Records of Deeds and being more particularly described as follows:

Beginning at a 5/8 inch iron rod set on the southwest corner of the southeast quarter of Section 29 within the right-of-way of State Route 47.

THENCE, with the south line of Section 29, S 83°-36'-11" E, a distance of 346.07 feet to a point on the center-line of the easement at the TRUE POINT OF BEGINNING.

THENCE, with the center-line of the easement, N 21°-35'-05" E, a distance of 147.70 feet to a point.

THENCE, continuing with the center-line of the easement, N 64°-47'-44" E, a distance of 434.18 feet to a point on the west line of a 10.217 acre tract at the terminus of the easement.

The basis for bearings is the south line of Section 29, being N 83°-36'-11" W, and all other bearings are from angles and distances measured in a field survey by Lee Surveying and Mapping Co., Inc. on May 2, 2000.

Description prepared by:

A handwritten signature in black ink that reads 'William K. Bruce'.

William K. Bruce
Professional Surveyor 7437
May 8, 2000

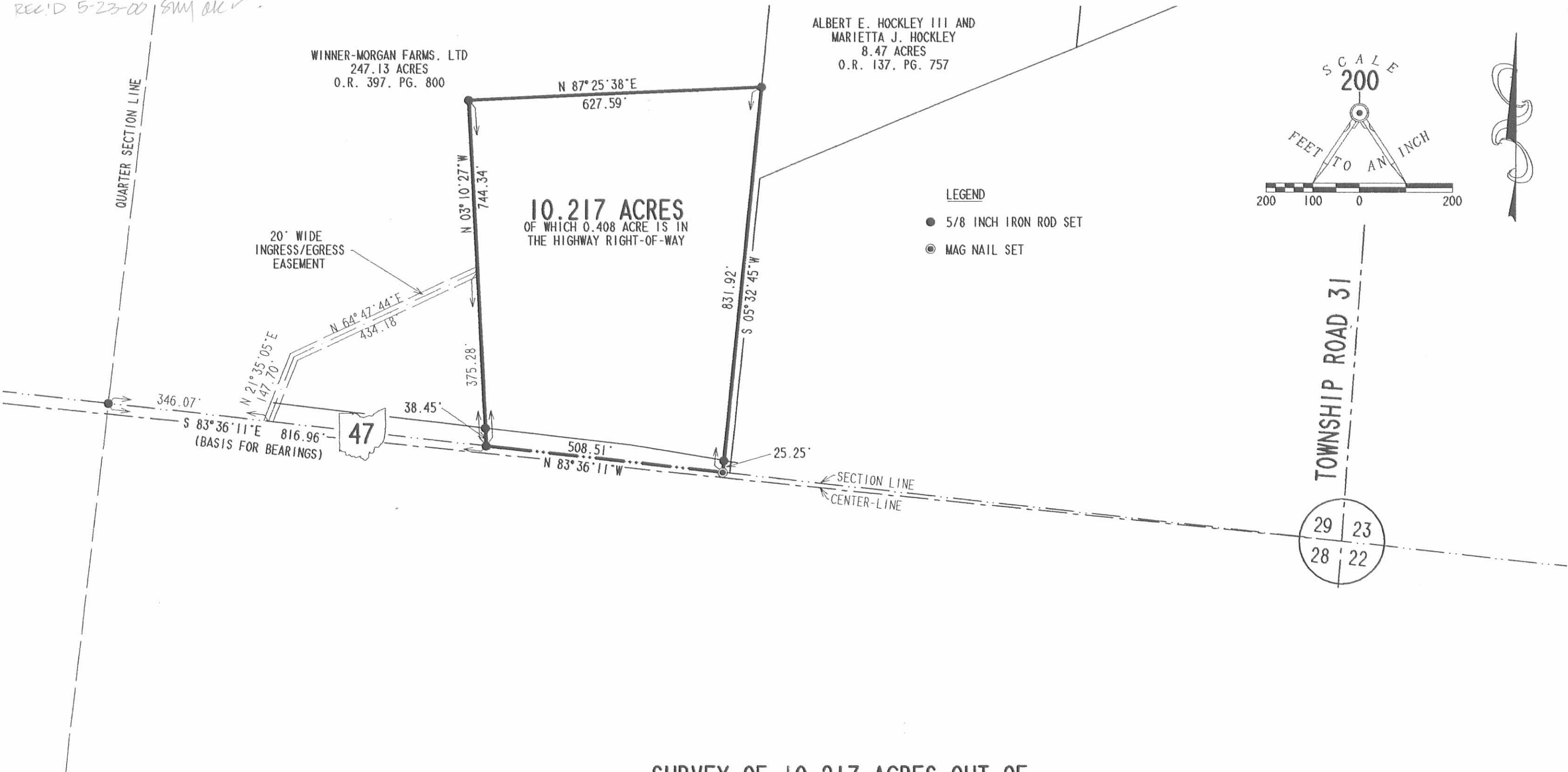


ORIGINAL STAMP IN GREEN

L-2937

INDEXED ON MAP
9314 2D-2

REC'D 5-23-00 SWM OK ✓



REFERENCES

LOGAN COUNTY ENGINEERS' FILES:
L-35 AND X-31
LOGAN COUNTY R/W PLAN LOG. -47
R-3574 AND R-7402

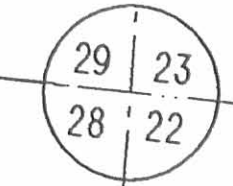
2 WORKING DAYS
BEFORE YOU DIG
CALL TOLL FREE **800-362-2764**
OHIO UTILITIES PROTECTION SERVICE.

INDEXED ON MAP
9314 2P

SURVEY OF 10.217 ACRES OUT OF
THE WINNER-MORGAN FARMS, LTD
247.13 ACRE TRACT
OFFICIAL RECORD 397, PAGE 800
SECTION 29, TOWN 3, RANGE 14
HARRISON TOWNSHIP
LOGAN COUNTY, OHIO



SURVEYED BY:
William K. Bruce
WILLIAM K. BRUCE
PROFESSIONAL SURVEYOR 7437
MAY 2, 2000
COPYRIGHT 2000 BY:
LEE SURVEYING & MAPPING CO., INC.
117 North Madriver Street
BELLEFONTAINE, OHIO 43311
(937) 593-7335



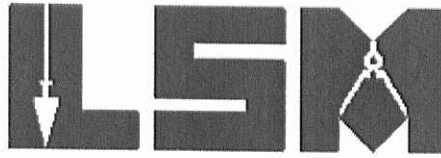
12-9-14

Lee Surveying and Mapping Co., Inc.



Land Surveys • Topography • Subdivisions • Construction Layout

117 N. Madriver St.
Bellefontaine OH 43311



Phone: (937) 593-7335
Fax: (937) 593-7444
surveys@lsminc.us

WINNER, TRUSTEES 158.649 ACRES

Lying in Section 29, Town 3, Range 14, Harrison Township, Logan County, Ohio.

Being out of the Alan Joseph Winner and Renee Elizabeth Winner, Trustees 247.13 acre tract as deeded and described in Official Record 819, Page 627, Parcel II of the Logan County Records of Deeds and being more particularly described as follows:

Commencing on a concrete monument found on the center-line of Ohio Route 47 on an angle point at P.I. Station 424+55.72 (Logan County Right-of-Way Plan LOG.-47-(3.56)-7.86).

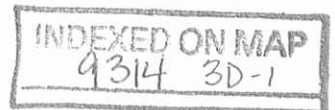
THENCE, with the center-line of County Highway 47 (variable widths), S 85°-20'-21"E, a distance of 250.17 feet to a point on the east line of the northwest quarter of Section 28.

THENCE, with the east line of the northwest quarter of Section 28, N 05°-20'-13"E, a distance of 23.08 feet to a 5/8 inch iron rod found on the south line of the southwest quarter of Section 29 on the southeast corner of the southwest quarter of said Section at the TRUE POINT OF BEGINNING.

THENCE, with the south line of Section 29, the north line of Laura J. Rostorfer 9.53 acre tract (O.R. 1018, Pg. 497) and within the right-of-way of Ohio Route 47, N 84°-28'-59"W, a distance of 1327.89 feet to a stone found, referenced by a 5/8 inch iron rod found bearing N 58°-45'-39"E, a distance of 2.27 feet.

THENCE, with the east line of the Alan Joseph Winner and Renee Elizabeth Winner, Trustees remainder of the 16.538 acre tract (O.R. 1143, Pg. 475) and the Derreck W. Dillon 88.07 acres (O.R. 1137, Pg. 114), N 04°-27'-36"E, a distance of 2591.03 feet to a 5/8 inch iron rod set, referenced by a 5/8 inch iron rod found bearing N 04°-27'-36"E, a distance of 25.00 feet.

THENCE, S 85°-18'-51"E, a distance of 2646.35 feet to a 5/8 inch iron rod set.



Lee Surveying and Mapping Co., Inc.

Land Surveys • Topography • Subdivisions • Construction Layout

117 N. Madriver St.
Bellefontaine OH 43311



Phone: (937) 593-7335
Fax: (937) 593-7444
surveys@lsminc.us

THENCE, with the west lines of the Esther Sally Morgan, Trustee 43.40 acre tract (O.R. 1090, Pg. 451, Tract IX) and the Albert E. Hockley III 8.47 acre tract (O.R. 137, Pg. 757), S 04°-18'-52"W, a distance of 2621.23 feet to a MAG nail set on the south line of Section 29, passing a 5/8 inch iron rod found at 2595.98 feet.

THENCE, with the south line of Section 29 and within the highway right-of-way, N 84°-50'-35"W, a distance of 1325.41 feet to the point of beginning.

Containing 158.649 acres, of which 1.193 acres are within the highway right-of-way.

Property is subject to any and all previous easements and rights-of-way of record.

The basis for bearings is the center-line of Ohio Route 47 between Station 414+00 and P.I. Station 424+55.72, being N 60°-46'-27"E, and all other bearings are from angles and distances measured in a field survey by Lee Surveying and Mapping Co., Inc. on November 13, 2014.

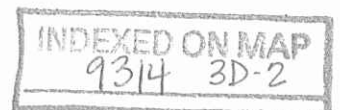


Description prepared by:

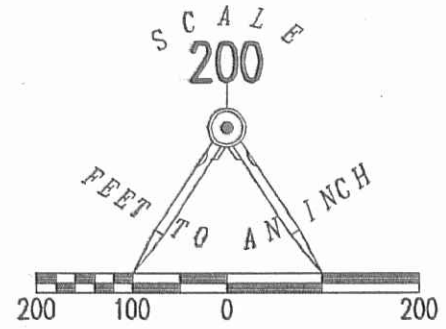
William K. Bruce

William K. Bruce
Professional Surveyor 7437
December 4, 2014

58200914



2 WORKING DAYS
BEFORE YOU DIG
CALL TOLL FREE 800-362-2764
OHIO UTILITIES PROTECTION SERVICE



- LEGEND:
- ⊕ CONCRETE MONUMENT FOUND
 - ⊙ MAG NAIL SET
 - ⊙ MAG NAIL FOUND
 - ⊗ STONE FOUND WITH "X" CUT IN TOP
 - 5/8 INCH IRON ROD FOUND
 - 5/8 INCH IRON ROD SET WITH PLASTIC I.D. CAP STAMPED "LSM 7437"

ALAN JOSEPH WINNER AND
RENEE ELIZABETH WINNER, TRUSTEES
247.13 ACRES
O.R. 819, PG. 627
PARCEL II

25.00' QUARTER SECTION LINE
S 85°18'51" E 2646.35'

158.649 ACRES
OF WHICH 1.193 ACRES ARE WITHIN
THE HIGHWAY RIGHT-OF-WAY

DERRECK W. DILLON
88.07 ACRES
O.R. 1137, PG. 114

N 04°27'36" E 2591.03'

ESTHER SALLY
MORGAN, TRUSTEE
43.40 ACRES
O.R. 1090, PG. 451
TRACT IX

ALBERT E. HOCKLEY III
8.47 ACRES
O.R. 137, PG. 757

DETAIL
NOT TO SCALE



ALAN JOSEPH WINNER AND
RENEE ELIZABETH WINNER, TRUSTEES
REMAINDER OF 16.538 ACRES
O.R. 1143, PG. 475

SECTION 29, TOWN 3, RANGE 14
SECTION 28, TOWN 3, RANGE 14
1327.89' N 84°28'59" W

LAURA J. ROSTORFER
9.53 ACRES
O.R. 1018, PG. 497

P.L. STATION
424+55.72
(LOGAN COUNTY R/W PLAN
LOG-47-(3.56)-7.86)

(VARIABLE WIDTHS)

BOXENGHALAS
CREEK

LAURA J. ROSTORFER
1.500 ACRES O.R. 1152, PG. 566

STATION 414+00
(LOGAN COUNTY R/W PLAN
LOG-47-(3.56)-7.86)

SURVEY OF 158.649 ACRES OUT OF THE
ALAN JOSEPH WINNER AND
RENEE ELIZABETH WINNER, TRUSTEES
247.13 ACRE TRACT
OFFICIAL RECORD 819, PAGE 627
PARCEL II
SECTION 29, TOWN 3, RANGE 14
HARRISON TOWNSHIP
LOGAN COUNTY, OHIO

SURVEYED BY:

William K. Bruce

WILLIAM K. BRUCE
PROFESSIONAL SURVEYOR 7437
NOVEMBER 13, 2014

COPYRIGHT 2014 BY:
LEE SURVEYING & MAPPING CO., INC.
117 North Modriver Street
BELLEFONTAINE, OHIO 43311
(937) 593-7335
WWW.LSMINC.US
surveys@lsminc.us



INDEXED ON MAP
9314 3P