

SURVEY FOR JOHN T. BELSER II

**1.138 ACRE TRACT
Section 9, Town 3, Range 14
Township of Harrison
County of Logan
State of Ohio**

The following described 1.138 acre tract is situated in the S. W. quarter of Sec. 9, T. 3, R.14, Township of Harrison, County of Logan, State of Ohio. Said 1.138-acre tract being out of John T. Belser II and Stephen R. Jacks' 52.859 acres, described in Official Record 689, page 295, which has been assigned permanent parcel no. 081050000023013 and is more particularly described as follows:

Beginning for reference at a magnetic nail found over stone on the centerline of Township Road 200 (60' in width). Said magnetic nail being the northwest corner of Sec. 8, T. 3, R. 14, the southwest corner of said Sec. 9, T. 3, R. 14 and the southwest corner of said 52.859 acre tract, on the line between Union Township and Harrison Township.

Thence with centerline of said Township Road 200, the north line of said section 8, the north line Union Township, the south line of said Section 9, the south line of Harrison Township and the south line of said 52.859 acre tract, S.81°32'58"E., 116.74 feet to a railroad spike set. Said railroad spike being the true point of beginning for this description.

Thence departing from the centerline of said Township Road 200, the north line of said section 8 and the north line Union Township, entering said section 9, Harrison Township and said 52.859 acre tract, N.5°00'00"E., 248.26 feet to a 5/8 inch capped iron pin set, passing a 5/8 inch capped iron pin set at 30.05 feet.

Thence S.81°32'58"E., 200.00 feet to a 5/8 inch capped iron pin set on the east line of said 52.859 acre tract and the west line of Countrytyme Grove City Ltd.'s 5.012 acre tract (Tract M-12), described in Official Record 656, page 412 and assigned permanent parcel no. 081050000023012.

Thence following the east line of said 52.859 acre tract and west line of said 5.012 acre tract, S.5°00'00"W, 248.26 feet, to a 5/8 inch capped iron pin found (LEE) on the centerline of said Township Road 200, the south line of said 52.859 acre tract, the south line of said section 9, the south line of Harrison Township, the north line of Union Township and the north line of said section 8, passing a 5/8 inch capped iron pin found (LEE) at 218.21 feet.

Thence following the south line of said 52.859 acre tract, the south line of said section 9, the south line of Harrison Township, the north line of said section 8 and the north line of Union Township, N.81°32'58"W., 200.00 feet to the point of beginning.

INDEXED ON MAP

9440 1D-1

Containing 1.138 acres, of which 0.138 acres being within the right-of-way of Township Road 200.

Basis of bearing being the centerline of T.R. 200 (S.81°32'58"E.) as shown in Logan County Survey index number 9440, filed in the Map Room of the Logan County Engineer's Office.

Caps placed on iron pins set are stamped "Logan Co. Engineer".

This description of a 1.138-acre tract represents a new survey prepared by the Logan County Engineer's Office from an actual field survey performed on January 20th 2006.

This instrument was prepared by the Logan County Engineer's Office.



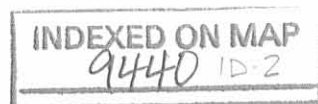
Curtis D. Dill

Curtis D. Dill

Deputy Surveyor

Logan County Engineer's Office

Registered Surveyor No. 7310



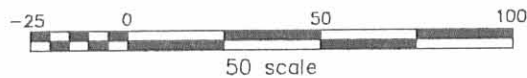
SURVEY FOR JOHN T. BELSER II
1.000 ACRE TRACT
Section 9, Town 3, Range 14
Township of Harrison
County of Logan
State of Ohio
January 2006

Said 1.000-acre tract being out of John T. Belser II and Stephen R. Jacks' 52.859 acres, described in Official Record 689, page 295. Which has been assigned permanent parcel no. 081050000023013

Basis of bearing established from from survey index number 9440 being (S.81°32'58"E.) for the centerline of Township Road 200(60'). All other angles were measured in the field.

LEGEND:

- ⊕ Railroad spike found
- ⊗ Magnetic nail found over stone
- 5/8 inch capped iron pin found (LEE)
- 1/2 inch iron pipe found
- ⊠ Stone in monument box found
- ⊙ Magnetic nail set
- ⊗ Railroad spike set
- 5/8 inch capped iron pin set ("Logan Co. Engineer")



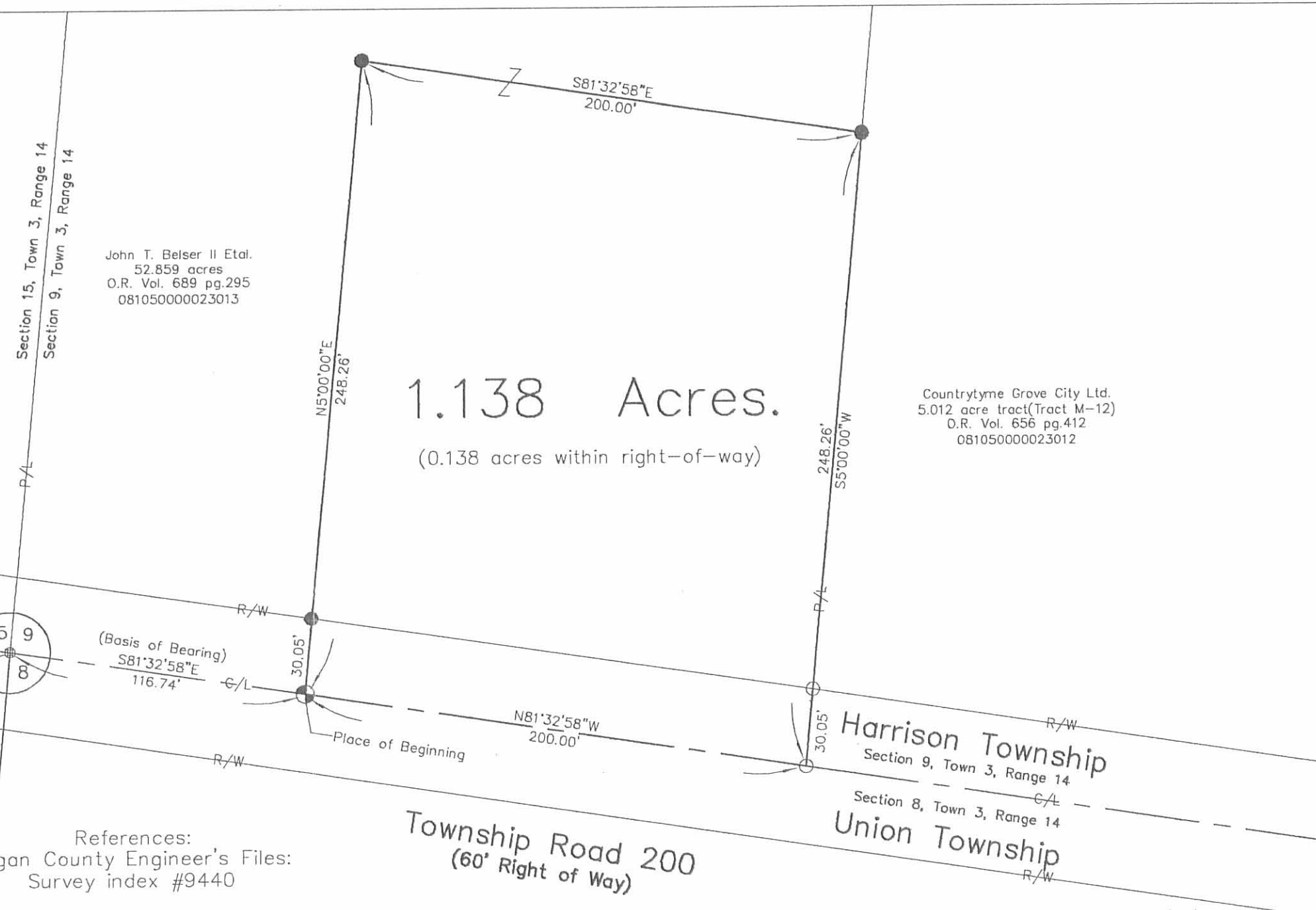
References:
 Logan County Engineer's Files:
 Survey index #9440

LOGAN COUNTY ENGINEER'S OFFICE

Scott C. Coleman, P.E., P.S.
 1991 County Road 13, P.O. Box 427
 Bellefontaine, Ohio 43311
 Phone (937) 592-2791
 Map Room (937) 599-7230

Date: 1/20/06

Drawn By: GTD



John T. Belser II Etal.
 52.859 acres
 O.R. Vol. 689 pg.295
 081050000023013

1.138 Acres.
 (0.138 acres within right-of-way)

Countrytyme Grove City Ltd.
 5.012 acre tract(Tract M-12)
 O.R. Vol. 656 pg.412
 081050000023012



This plat represents a new survey prepared from an actual field survey performed by the Logan County Engineer's Office on January 20th, 2006.

Curtis D. Dill

Curtis D. Dill
 Deputy Surveyor
 Logan County Engineer's Office
 Registered Surveyor No. 7310

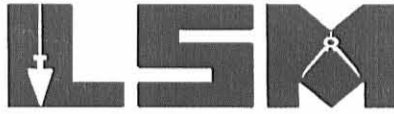
INDEXED ON MAP
 9440 1P

REC'D 9.24.03 SMJ AL

Lee Surveying and Mapping Co., Inc.

Land Surveys • Topography • Subdivisions • Construction Layout

117 N. Madriver St.
Bellefontaine OH 43311



Phone: (937) 593-7335
Fax: (937) 593-7444

COUNTRYTYME 52.859 ACRES

Lying in Section 9 and Section 15, Town 3, Range 14, Harrison Township, Logan County, Ohio.

Being out of the Countrytyme Grove City, Ltd, 136.124 acre tract as deeded and described in Official Record 656, Page 412, Exhibit M, Tract N-13, of the Logan County Records of Deeds and being more particularly described as follow:

Beginning at a P.K. nail with shiner found on the south line of Harrison Township and the center-line of Township Road 200 (Sta. 60+18.83, Logan Co. Eng. Field Book 709, Pg. 55) at the southwest corner of Section 9.

THENCE, with the west line of Section 9 and the east lines of the Shirley M. MacKinnon original 80.40 acre tract (O.R. 246, Pg. 487, Par. 1) and the Jean Ann Toriello original 30.0 acre tract (O.R. 439, Pg. 703), N 5°-00'-00" E, a distance of 1813.48 feet to a 5/8 inch iron rod set, passing a 5/8 inch iron rod set at 30.00 feet.

THENCE, with the north line of the said 30 acre tract, N 85°-52'-25" W, a distance of 1675.59 feet to a 5/8 inch iron rod set, passing a steel I-beam post found at 24.90 feet.

THENCE, with the east line of the Shirley M. Saxton original 50.00 acre tract (O.R. 313, Pg. 19, Tract I), N 4°-01'-09" E, a distance of 863.21 feet to a 5/8 inch iron rod set.

THENCE, with the north line of the southeast quarter of Section 15, the south line of the Billy W. Gillenwater 0.9875 acre tract (O.R. 57, Pg. 246) and the south lines of the Jerry L. Hoge 5.00 acre tract (O.R. 392, Pg. 606) and the Sharon K. Hoge original 38.856 acre tract (O.R. 550, Pg. 216), S 85°-54'-49" E, a distance of 1690.39 feet to a point at the northeast corner of the southeast quarter of Section 15, referenced by a 5/8 inch iron rod set S 5°-00'-00" W, at distance of 20.00 feet.

THENCE, with the north line of the southwest quarter of Section 9, the south line of the John M. Dickerson original 84.06 acre tract (O.R. 626, Pg. 738), S 83°-55'-30" E, a distance of 316.23 feet to a point.

THENCE, with the west line extended and the west line of the Countrytyme Grove City, Ltd. 5.012 acre tract (O.R. 656, Pg. 412, Exhibit L, Tract M-12), S 5°-00'-00" W, a distance of 2691.10 feet to a MAG nail set, passing 5/8 inch iron rods set at 30.00 feet and at 2661.05 feet.

THENCE, with the south line of Harrison Township, the center-line of Township Road 200 (width varies) and the south line of Section 9, N 81°-32'-58" W, a distance of 316.75 feet to the point of beginning.

Containing 52.859 acres, of which 0.218 acre is within the highway right-of-way, 19.485 acres are in Section 9 and 33.374 acres are in Section 15.

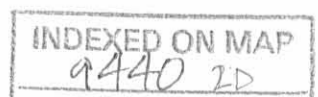
The basis for bearings is the west line of Section 9, being N 5°-00'-00" E, and all other bearings are from angles and distances measured in a field survey by Lee Surveying and Mapping Co., Inc. on September 16, 2003.

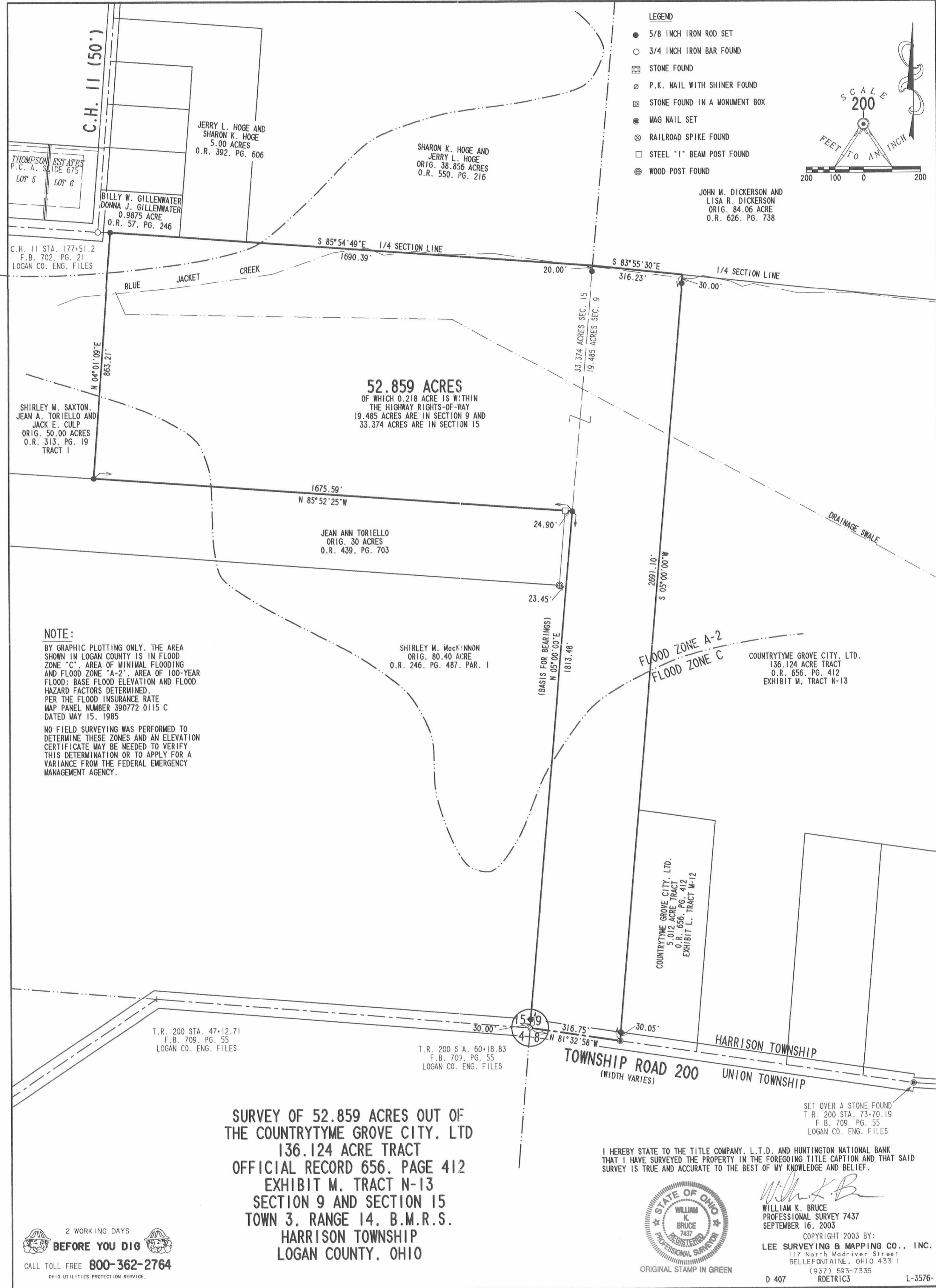


Description prepared by:

William K. Bruce
Professional Surveyor 7437
September 19, 2003

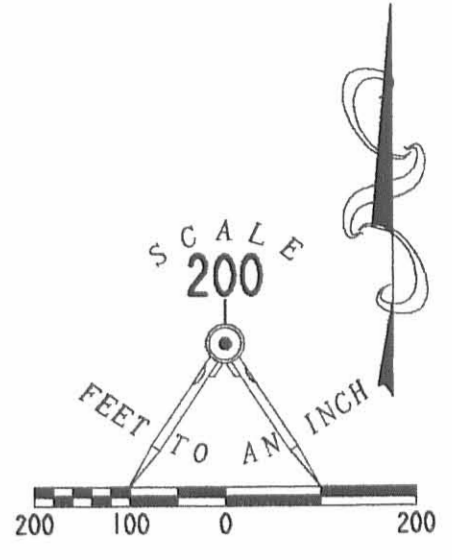
L-3576





LEGEND

- 5/8 INCH IRON ROD SET
- 3/4 INCH IRON BAR FOUND
- ⊠ STONE FOUND
- ⊗ P.K. NAIL WITH SHINER FOUND
- ⊠ STONE FOUND IN A MONUMENT BOX
- MAG NAIL SET
- ⊗ RAILROAD SPIKE FOUND
- STEEL "1" BEAM POST FOUND
- ⊕ WOOD POST FOUND



JOHN M. DICKERSON AND
LISA R. DICKERSON
ORIG. 84.06 ACRE
O.R. 626. PG. 738

52.859 ACRES
OF WHICH 0.218 ACRE IS WITHIN
THE HIGHWAY RIGHTS-OF-WAY
19.485 ACRES ARE IN SECTION 9 AND
33.374 ACRES ARE IN SECTION 15

NOTE:

BY GRAPHIC PLOTTING ONLY. THE AREA SHOWN IN LOGAN COUNTY IS IN FLOOD ZONE "C". AREA OF MINIMAL FLOODING AND FLOOD ZONE "A-2". AREA OF 100-YEAR FLOOD: BASE FLOOD ELEVATION AND FLOOD HAZARD FACTORS DETERMINED. PER THE FLOOD INSURANCE RATE MAP PANEL NUMBER 390772 0115 C DATED MAY 15, 1985
NO FIELD SURVEYING WAS PERFORMED TO DETERMINE THESE ZONES AND AN ELEVATION CERTIFICATE MAY BE NEEDED TO VERIFY THIS DETERMINATION OR TO APPLY FOR A VARIANCE FROM THE FEDERAL EMERGENCY MANAGEMENT AGENCY.

**SURVEY OF 52.859 ACRES OUT OF
THE COUNTRYTIME GROVE CITY, LTD
136.124 ACRE TRACT
OFFICIAL RECORD 656, PAGE 412
EXHIBIT M, TRACT N-13
SECTION 9 AND SECTION 15
TOWN 3, RANGE 14, B.M.R.S.
HARRISON TOWNSHIP
LOGAN COUNTY, OHIO**

I HEREBY STATE TO THE TITLE COMPANY, L.T.D. AND HUNTINGTON NATIONAL BANK THAT I HAVE SURVEYED THE PROPERTY IN THE FOREGOING TITLE CAPTION AND THAT SAID SURVEY IS TRUE AND ACCURATE TO THE BEST OF MY KNOWLEDGE AND BELIEF.



William K. Bruce
WILLIAM K. BRUCE
PROFESSIONAL SURVEY 7437
SEPTEMBER 16, 2003

COPYRIGHT 2003 BY:
LEE SURVEYING & MAPPING CO., INC.
117 North Medriver Street
BELLEFONTAINE, OHIO 43311
(937) 593-7335

2 WORKING DAYS
BEFORE YOU DIG
CALL TOLL FREE **800-362-2764**
OHIO UTILITIES PROTECTION SERVICE.

INDEXED ON MAP
9440 JP

REC'D 6-24-03 SMY dk ✓

Lee Surveying and Mapping Co., Inc.

Land Surveys • Topography • Subdivisions • Construction Layout

117 N. Madriver St.
Bellefontaine OH 43311



Phone: (937) 593-7335
Fax: (937) 593-7444

PHELPS 199.482 ACRES

Lying in Section 9 and Section 15, Town 3, Range 14, Harrison Township, Logan County, Ohio.

Being all of the Raymond Phelps 166.59 acre and 32.79 acre tracts as deeded and described in Official Record 339, Page 679, Tract I and Tract II, of the Logan County Records of Deeds and being more particularly described as follows:

Beginning at a P.K. nail with shiner found on the southwest corner of Section 9 on the center-line of Township Road 200 at Township Road 200 center-line station 60+18.83 (Logan Co. Eng. Field Book 709, Pg. 55).

THENCE, with the west line of Section 9 and the east line of the Shirley M. MacKinnon original 80.40 acre tract (O.R. 246, Pg. 487, Parcel I) and the east line of the Jean Ann Toriello original 30 acre tract (O.R. 439, Pg. 703), N 5°-00'-00" E, a distance of 1813.48 feet to a 5/8 inch iron rod set, passing a 5/8 inch iron rod set at 30.00 feet.

THENCE, with the north line of the said 30 acre tract, N 85°-52'-25" W, a distance of 1675.59 feet to a 5/8 inch iron rod set, passing a steel I-beam post at 24.90 feet.

THENCE, with the east line of the Shirley M. Saxton original 50.00 acre tract (O.R. 313, Pg. 19, Tract I), N 4°-01'-09" E, a distance of 863.21 feet to a 5/8 inch iron rod set.

THENCE, with the north line of the southeast quarter of Section 15, the south line of the Billy W. Gillenwater 0.9875 acre tract (O.R. 57, Pg. 246) and the south lines of the Jerry L. Hoge 5.00 acre tract (O.R. 392, Pg. 606) and the Sharon K. Hoge original 38.856 acre tract (O.R. 550, Pg. 216), S 85°-54'-49" E, a distance of 1690.39 feet to a point at the northeast corner of the southeast quarter of Section 15, referenced by a 5/8 inch iron rod set S 5°-00'-00" W, a distance of 20.00 feet.

THENCE, with the north line of the southwest quarter of Section 9, the south line of the John M. Dickerson original 84.06 acre tract (O.R. 626, Pg. 738), and the south line of the Richard F. Detrick 1.0 acre tract (Vol. 355, Pg. 547), S 83°-55'-30" E, a distance of 2641.46 feet to a stone found, passing a 5/8 inch iron rod set at 2616.44 feet.

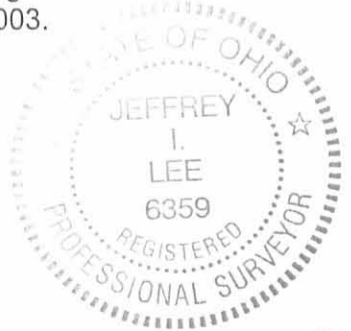
THENCE, with the center-line of Township Road 198 (50 feet wide) and the east line of the southwest quarter of Section 9, S 3°-45'-22" W, a distance of 2694.01 feet to a stone found in a monument box at the southeast corner of the southwest quarter of Section 9 on Township Road 200 center-line station 87+20.98 (Logan Co. Eng. Field Book 709, Pg. 55).

THENCE, with the south line of Section 9, the south line of Harrison Township and the center-line of Township Road 200 (34 feet wide), N 85°-41'-39" W, a distance of 1350.66 feet to a MAG nail set on Township Road 200 center-line station 73+70.19 (Logan Co. Eng. Field Book 709, Pg. 55).

THENCE, with the south line of Section 9, the south line of Harrison Township and the center-line of Township Road 200 (60 feet wide), N 81°-32'-58" W, a distance of 1351.38 feet to the point of beginning.

Containing 199.482 acres, of which 2.994 acres are within the highway rights-of-way, 166.108 acres are in Section 9 and 33.374 acres are in Section 15.

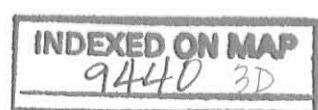
The basis for bearings is the west line of Section 9, being N 5°-00'-00" E, and all other bearings are from angles and distances measured in a field survey by Lee Surveying and Mapping Co., Inc. on June 16, 2003.



ORIGINAL STAMP IN GREEN

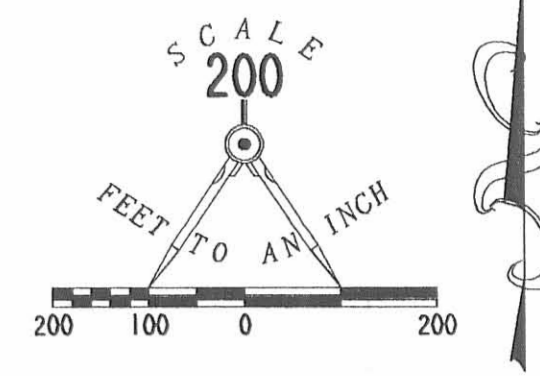
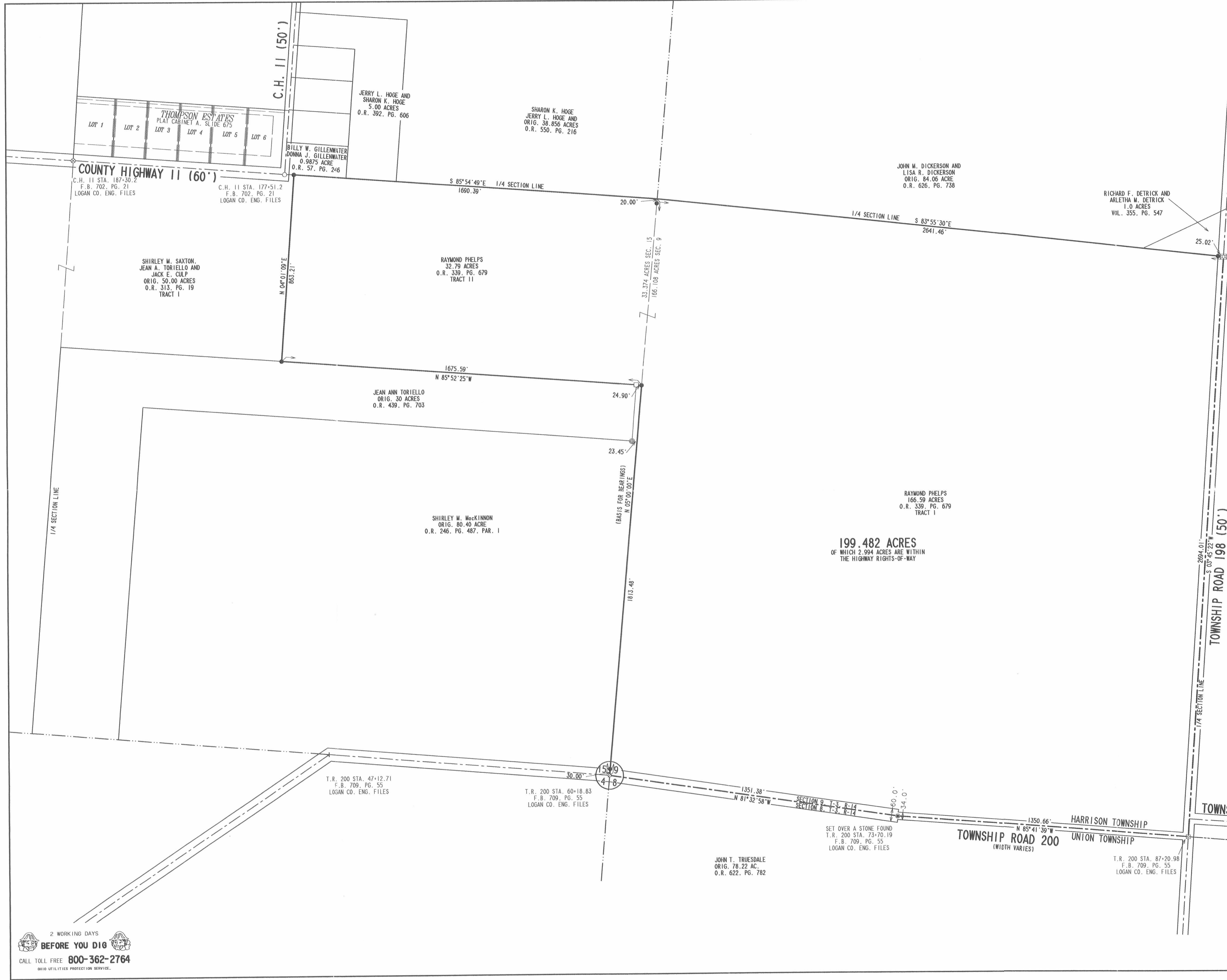
Description prepared by:

Jeffrey I. Lee
Jeffrey I. Lee
Professional Surveyor 6359
June 17, 2003



L-3576

REV 10 06-24-03 8my/da



- LEGEND**
- 5/8 INCH IRON ROD SET
 - 3/4 INCH IRON BAR FOUND
 - ⊠ STONE FOUND
 - ⊗ P.K. NAIL WITH SHINER FOUND
 - ⊞ MONUMENT BOX FOUND
 - ⊙ MAG NAIL SET
 - ⊕ RAILROAD SPIKE FOUND
 - STEEL "I" BEAM POST FOUND
 - ⊗ WOOD POST FOUND

199.482 ACRES
 OF WHICH 2.994 ACRES ARE WITHIN
 THE HIGHWAY RIGHTS-OF-WAY

**RETRACEMENT SURVEY OF THE
 RAYMOND PHELPS
 166.59 ACRE AND 32.79 ACRE TRACT
 OFFICIAL RECORD 339, PAGE 679
 TRACT I AND TRACT II
 SECTION 9 AND SECTION 15
 TOWN 3, RANGE 14, B.M.R.S.
 HARRISON TOWNSHIP
 LOGAN COUNTY, OHIO**



SURVEYED BY:
 JEFFREY L. LEE
 PROFESSIONAL SURVEY 6359
 JUNE 16, 2003

COPYRIGHT 2003 BY:
 LEE SURVEYING & MAPPING CO., INC.
 117 North Madison Street
 BELLEFONTAINE, OHIO 45311
 (937) 593-7335
 RDETRICK L-3576-1

2 WORKING DAYS
BEFORE YOU DIG
 CALL TOLL FREE 800-362-2764
 OHIO UTILITIES PROTECTION SERVICE

INDEXED ON MAP
 94410 2/P