

REBA CLARK

to

Huntsville School Board

The following described real estate situated in the Village of Huntsville, Virginia Military Survey #9904, McArthur Township, Logan County, Ohio and more particularly described as follows:

Beginning at an iron pin in the Huntsville Corporation line in the center of Napoleon Street and County Highway #222 at Station 21+34, as shown in Logan County Engineer's Field Book #694, page 52, at the northwest corner of the School Lot; thence with the west side of the School Lot S. 20°-00' W. 220.0 feet to a wiron pin, thence N. 70°-30' W. 40.0 feet to an iron pin, thence N. 20°-00' E. 220.0 feet to an iron pin in the center of Napoleon Street, thence with the center of said Napoleon Street S. 70°-30' E. 40.0 feet to the place of beginning, containing 0.20 of an acre more or less.

This tract is taken from a 5.20 acre tract of Reba Clark.

2088

ID

INDEXED ON MAP

Survey for
Huntsville School Board
and
The Village Council of Huntsville

2088

IP-1

Huntsville, VMS 9904
McArthur Trp, Logan Co., Ohio.

INDEXED ON MAP

Note:-

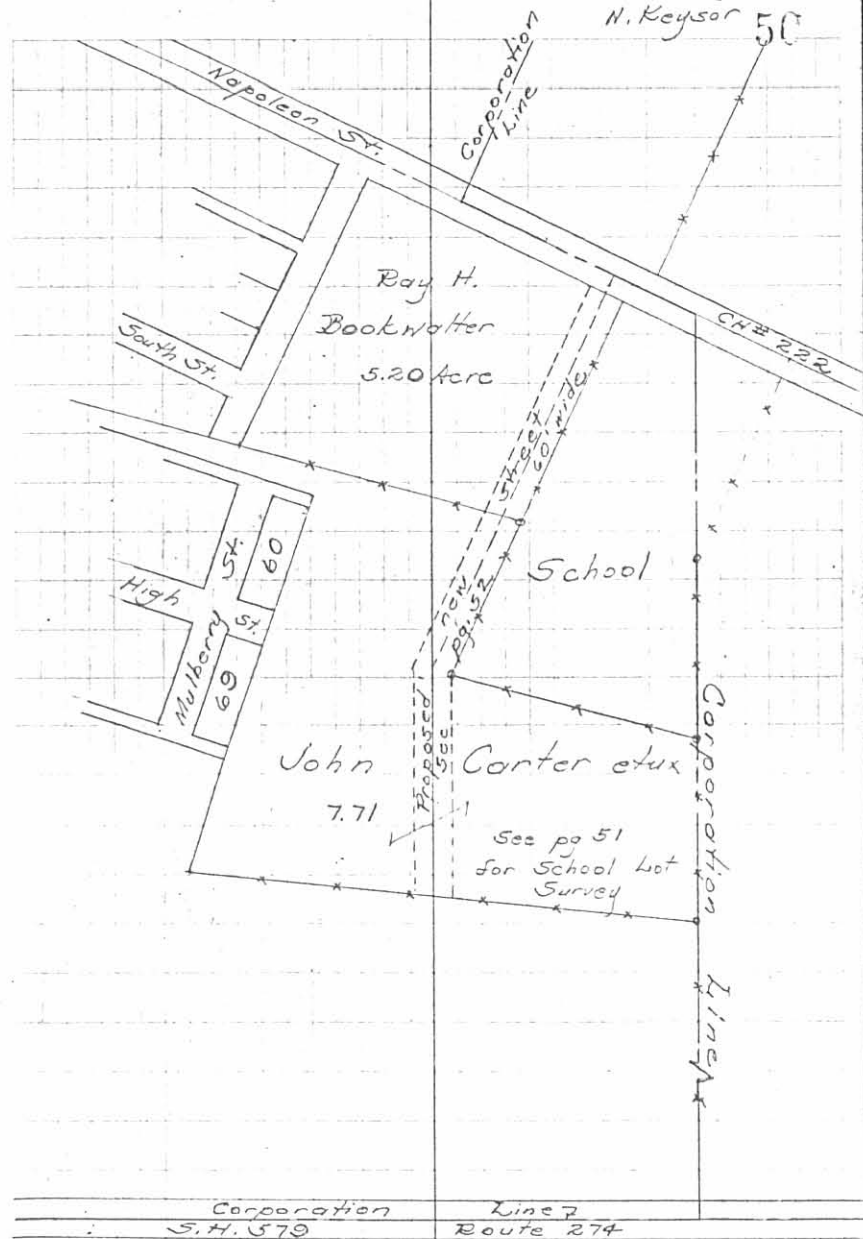
- See FB 579 pg 64 for survey of C.H. # 222.
- See FB 598 pg 33 for survey of S.H. # 579 (Route 274) formerly CH# 22.
- See F.B. 17A pg 42-3 for survey of school lot
- See F.B. 300X pg 74-5 for survey of John Carter (formerly Rude's 9.98 Acres)

2088

Jan. 22, 1951 F. B. 694

C. Keyser
V. Detrick
H. Keyser

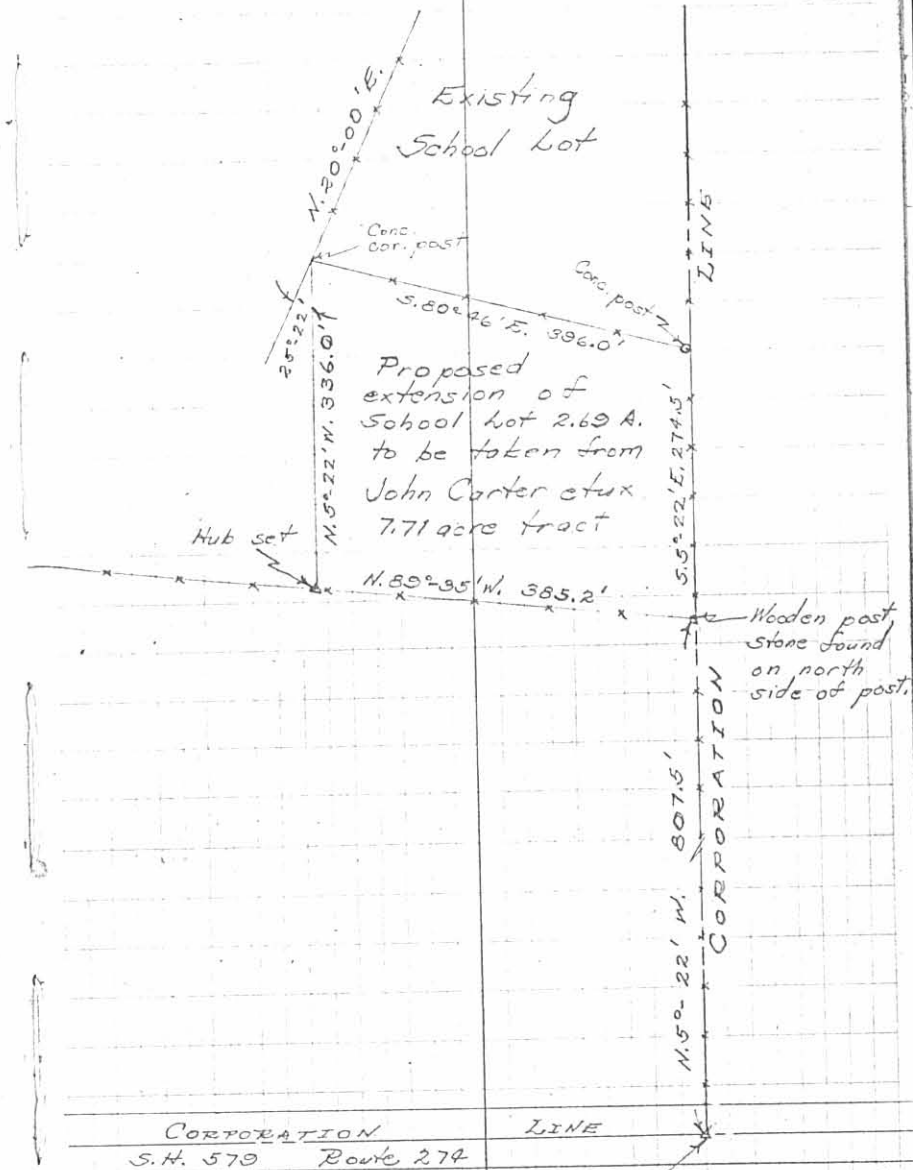
50



Survey for
Huntsville School Board (contd)

Jan. 22, 1951 F.B. 694

51



(2088) 1P-2

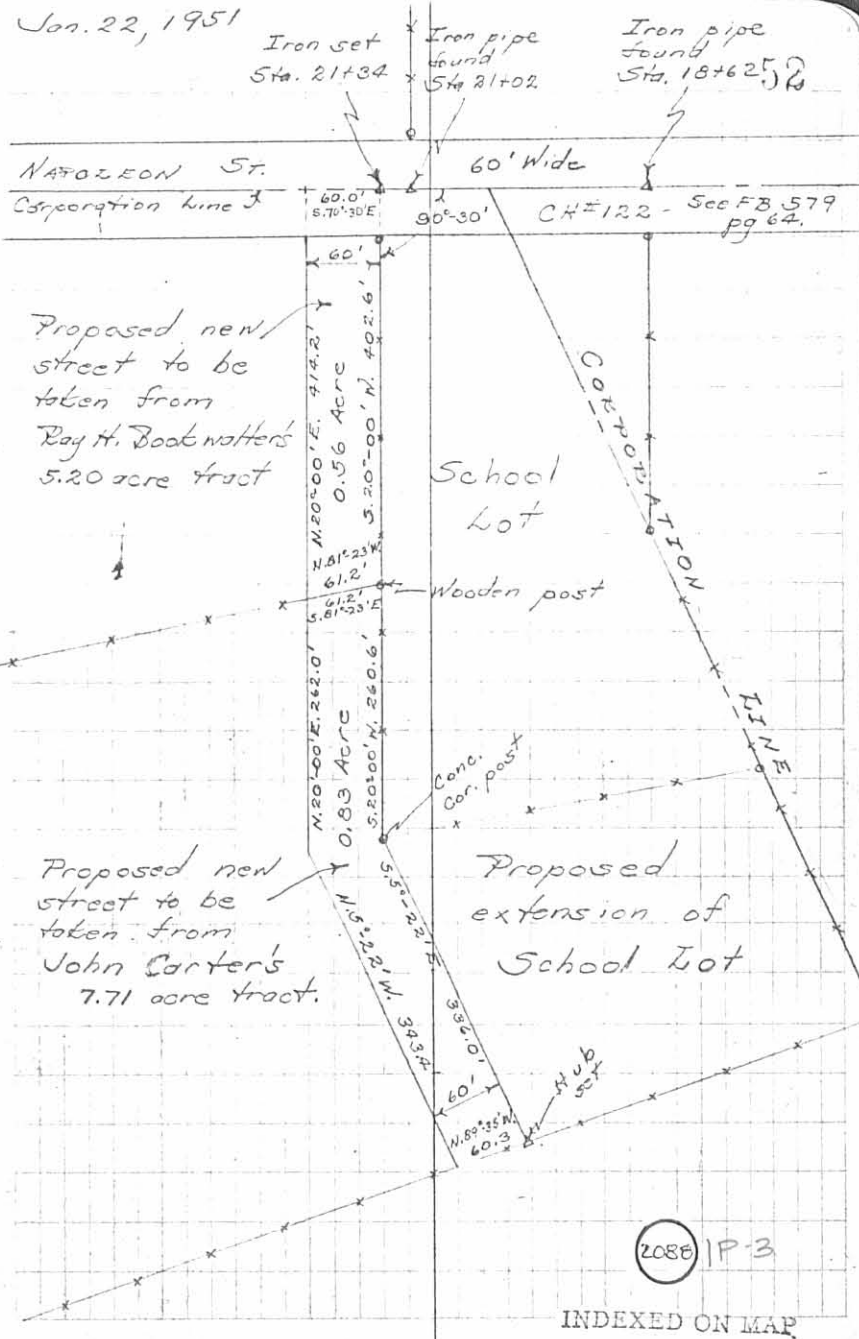
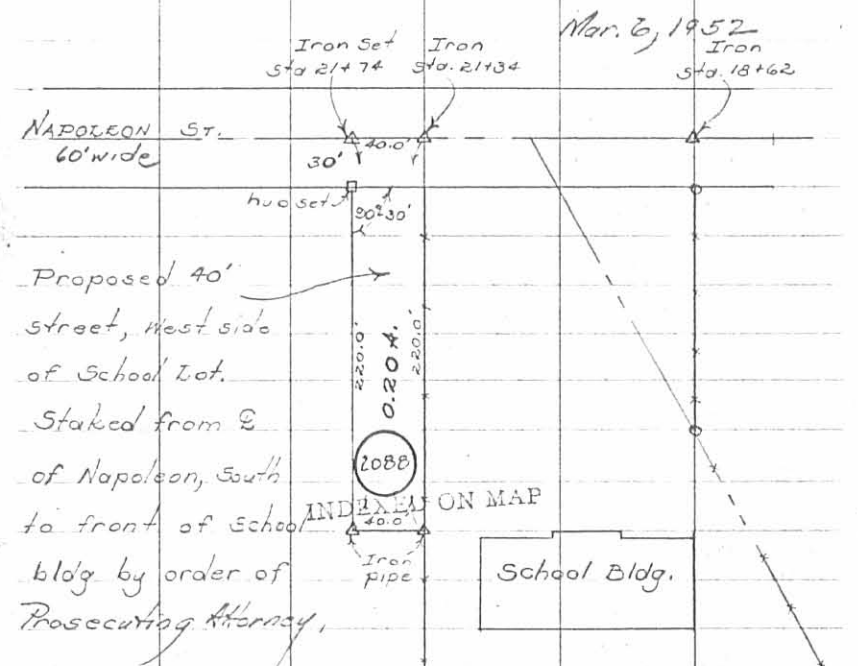
INDEXED ON MAP

Stone with iron placed on top. Iron found See FB 598 pg 33

Survey for
The Village Council of Huntsville (contd)

F.B. 694 Jan. 22, 1951

Proposed new street on
the west side of the
school lot to be
60' wide.



REV 10-8-09 SUMOK

Lee Surveying and Mapping Co., Inc.

Land Surveys • Topography • Subdivisions • Construction Layout

117 N. Madriver St.
Bellefontaine OH 43311



Phone: (937) 593-7335
Fax: (937) 593-7444
surveys@lsminc.us

BOARD OF EDUCATION 10.769 ACRES

Lying in Virginia Military Survey 9904, Village of Huntsville, McArthur Township, Logan County, Ohio.

Being all of The Board of Education of Huntsville School District, one and one half acre tract as deeded and described in Volume 62, Page 97, Board of Education of McArthur-Huntsville School District of the Village of Huntsville, 2 acre tract as deeded and described in Volume 112, Page 393, The Board of Education of McArthur-Huntsville Village School District, 0.69 acre tract as deeded and described in Volume 112, Page 394, Board of Education of the Huntsville Local School District, 2.69 acre tract as deeded and described in Volume 204, Page 446, The Board of Education of the Huntsville Local School District, Logan County, Ohio, 0.20 acre tract as deeded and described in Volume 206, Page 150 and Indian Lake School District, 3.580 acre tract as deeded and described in Official Record 33, Page 95 of the Logan County Records of Deeds and being more particularly described as follows:

Commencing on a 3/4 inch iron pipe found on the intersection of the center-line of Ohio Route 274 and the east right-of-way of McArthur Street, also being an east Village of Huntsville Corporation Line.

THENCE, with the east right-of-way of McArthur Street (30 feet wide) and the Village of Huntsville Corporation Line, N 07°-09'-09"W, a distance of 807.50 feet to a 5/8 inch iron rod set at the TRUE POINT OF BEGINNING.

THENCE, with the north line of the Myers Addition (Plat Cabinet A, Slide 331), S 89°-03'-09"W, a distance of 385.29 feet to a 5/8 inch iron rod found on the east right-of-way of Myers Street, passing a 5/8 inch iron rod found at 30.82 feet.

THENCE, with the east right-of-way of Myers Street (60 feet wide), the following two courses:

N 06°-31'-20"W, a distance of 335.33 feet to a 14 inch concrete post found.

N 18°-28'-46"E, a distance of 260.45 feet to a 6 inch concrete post found, passing 5/8 inch iron rods set at 5.00 feet and 259.45 feet.

THENCE, with the north right-of-way of Myers Street, N 83°-26'-23"W, a distance of 61.42 feet to a 5/8 inch iron rod set, passing a 5/8 inch iron rod set at 1.00 feet.

THENCE, with the north lines of the Brooks Allotment (Plat Cabinet A, Slide 363), the following three courses:

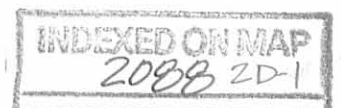
N 83°-03'-44"W, a distance of 199.91 feet to a 5/8 inch iron rod set.

N 83°-50'-01"W, a distance of 16.59 feet to a 5/8 inch iron rod set.

N 81°-47'-26"W, a distance of 189.32 feet to a 5/8 inch square iron rod found on the east right-of-way of Emory Street.

THENCE, with the east right-of-way of Emory Street (40 feet wide), N 17°-34'-43"E, a distance of 96.62 feet to a 3/4 inch iron rod found.

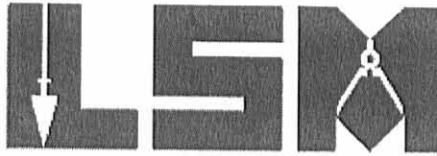
THENCE, with the southwesterly line of the Robert A. Gibson 0.278 acre tract (O.R. 268, Pg. 802), S 71°-10'-56"E, a distance of 110.06 feet to a 3/4 inch iron rod found.



Lee Surveying and Mapping Co., Inc.

Land Surveys • Topography • Subdivisions • Construction Layout

117 N. Madriver St.
Bellefontaine OH 43311



Phone: (937) 593-7335
Fax: (937) 593-7444
surveys@lsminc.us

THENCE, with the east lines of the said 0.278 acre tract and the Robert A. Gibson 0.725 acre tract (O.R. 67, Pg. 831), N 17°-31'-28"E, a distance of 397.23 feet to a railroad spike found on the center-line of Napoleon Street (60 feet wide), passing a 3/4 inch iron pipe found at 367.23 feet.

THENCE, with the center-line of Napoleon Street (County Highway 222), the following three courses:

S 71°-29'-39"E, a distance of 319.03 feet to a railroad spike found.

S 70°-42'-06"E, a distance of 71.80 feet to a 1-1/2 inch iron pipe found.

S 71°-34'-28"E, passing the Village of Huntsville Corporation Line, a distance of 240.27 feet to a 1-1/2 inch iron pipe found.

THENCE, with the lines of the Robert G. Hart 23 acre tract (Vol. 348, Pg. 409), the following two courses:

S 19°-10'-32"W, a distance of 349.14 feet to a 5/8 inch iron rod set on the Village of Huntsville Corporation Line, passing a 5/8 inch iron rod set at 30.00 feet.

S 07°-09'-09"E, with the Village of Huntsville Corporation Line, a distance of 542.72 feet to the point of beginning.

Containing 10.769 acres, of which 0.434 acre is within the highway right-of-way. There are 10.081 acres in the Village of Huntsville and 0.688 acre in McArthur Township.

The basis for bearings is the center-line of Napoleon Street, being S 71°-29'-39"E, and all other bearings are from angles and distances measured in a field survey by Lee Surveying and Mapping Co., Inc. on May 26, 2009.



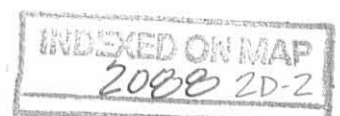
ORIGINAL STAMP IN GREEN

Description prepared by:

A handwritten signature in black ink that reads 'William K. Bruce'.

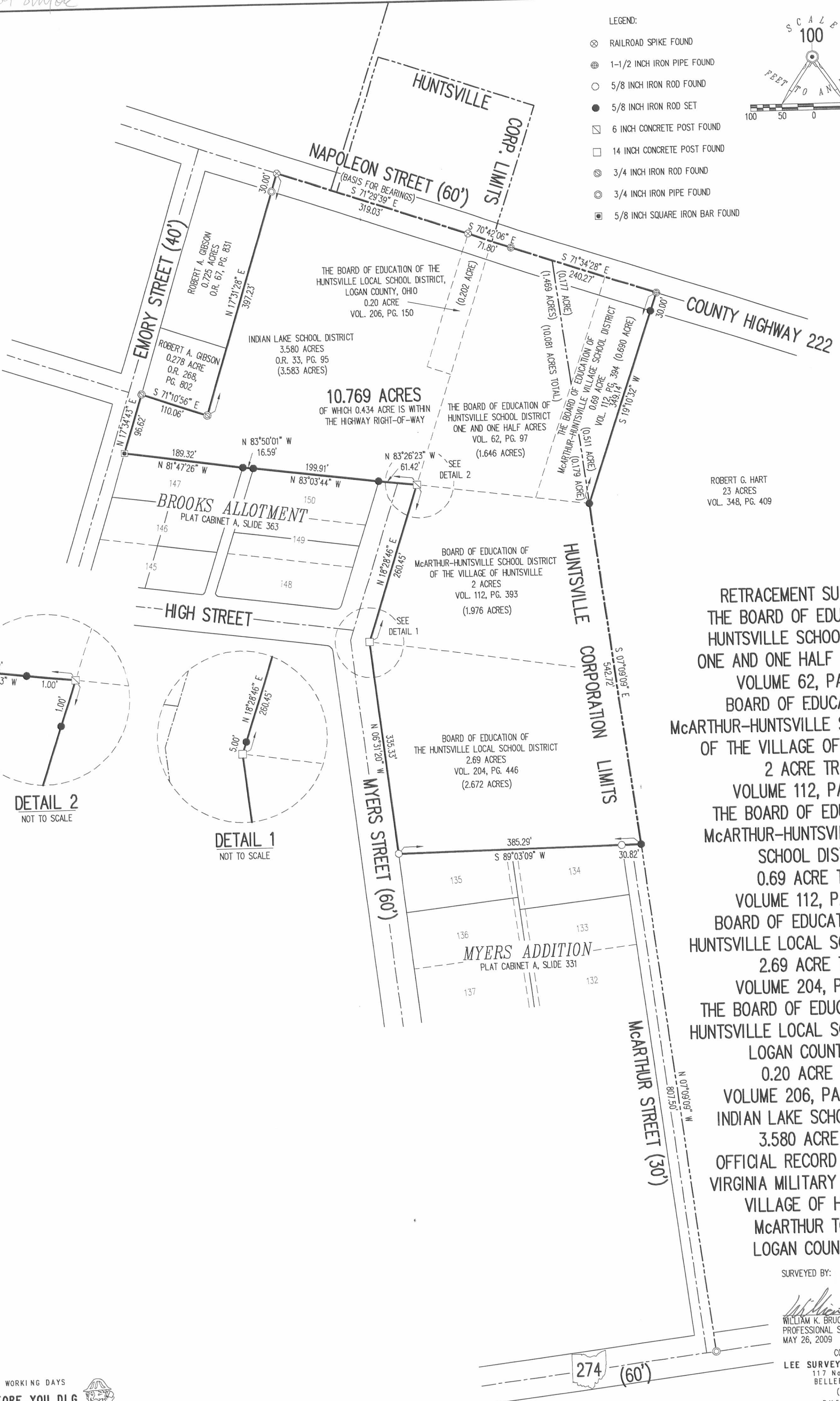
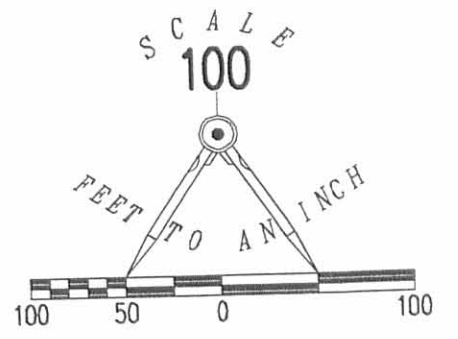
William K. Bruce
Professional Surveyor 7437
June 3, 2009

4793059



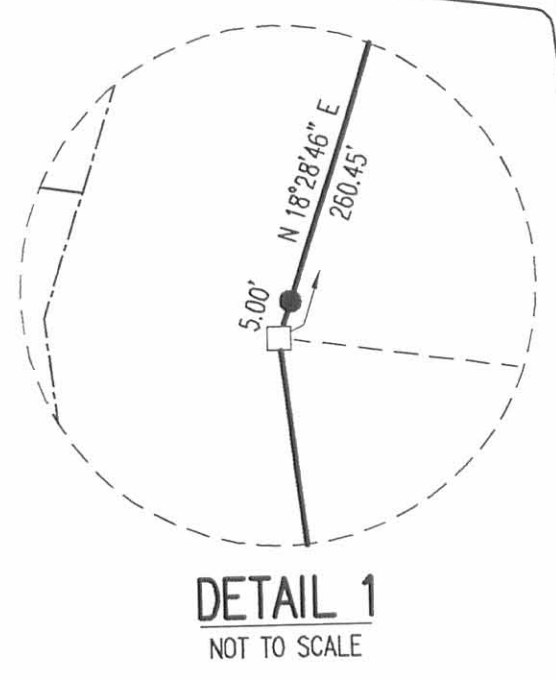
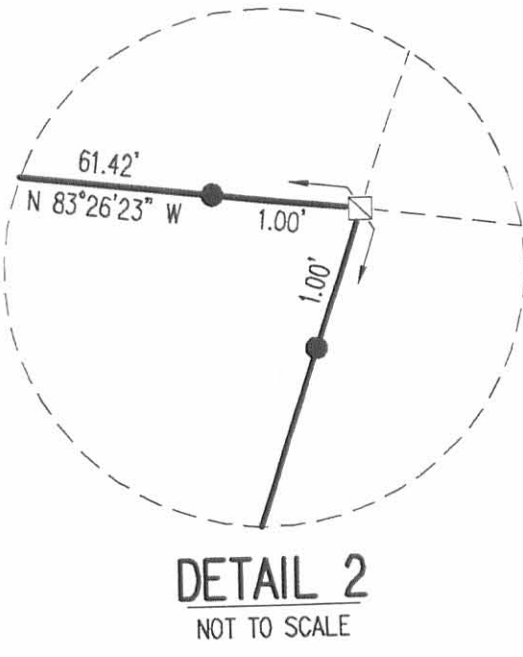
REV'D 6-8-09 S.M.Y.O.C.

- LEGEND:
- ⊗ RAILROAD SPIKE FOUND
 - ⊕ 1-1/2 INCH IRON PIPE FOUND
 - 5/8 INCH IRON ROD FOUND
 - 5/8 INCH IRON ROD SET
 - ⊠ 6 INCH CONCRETE POST FOUND
 - 14 INCH CONCRETE POST FOUND
 - ⊙ 3/4 INCH IRON ROD FOUND
 - ⊚ 3/4 INCH IRON PIPE FOUND
 - 5/8 INCH SQUARE IRON BAR FOUND



ROBERT G. HART
23 ACRES
VOL. 348, PG. 409

RETRACEMENT SURVEY OF
THE BOARD OF EDUCATION OF
HUNTSVILLE SCHOOL DISTRICT
ONE AND ONE HALF ACRE TRACT
VOLUME 62, PAGE 97,
BOARD OF EDUCATION OF
McARTHUR-HUNTSVILLE SCHOOL DISTRICT
OF THE VILLAGE OF HUNTSVILLE
2 ACRE TRACT
VOLUME 112, PAGE 393,
THE BOARD OF EDUCATION OF
McARTHUR-HUNTSVILLE VILLAGE
SCHOOL DISTRICT
0.69 ACRE TRACT
VOLUME 112, PAGE 394,
BOARD OF EDUCATION OF THE
HUNTSVILLE LOCAL SCHOOL DISTRICT
2.69 ACRE TRACT
VOLUME 204, PAGE 446,
THE BOARD OF EDUCATION OF THE
HUNTSVILLE LOCAL SCHOOL DISTRICT,
LOGAN COUNTY, OHIO
0.20 ACRE TRACT
VOLUME 206, PAGE 150 AND
INDIAN LAKE SCHOOL DISTRICT
3.580 ACRE TRACT
OFFICIAL RECORD 33, PAGE 95
VIRGINIA MILITARY SURVEY 9904
VILLAGE OF HUNTSVILLE
McARTHUR TOWNSHIP
LOGAN COUNTY, OHIO



SURVEYED BY:
William K. Bruce
WILLIAM K. BRUCE
PROFESSIONAL SURVEYOR 7437
MAY 26, 2009



COPYRIGHT 2009 BY
LEE SURVEYING & MAPPING CO., INC.
117 North Madriver Street
BELLEFONTAINE, OHIO 43311
(937) 593-7335
surveys@lsmcinc.us
KSS D0509 4793059 L-4793-2

2 WORKING DAYS
BEFORE YOU DIG
CALL TOLL FREE 800-362-2764
OHIO UTILITIES PROTECTION SERVICE

INDEXED ON MAP
2008 2P

FB 694

Survey for
Huntsville School Board
and
The Village Council of Huntsville

2086

Huntsville, VMS 9904
McArthur Twp, Logan Co., Ohio.

INDEXED ON MAP

Note:-

See FB 579 pg 64 for survey
of C.H. # 222.

See FB 598 pg 33 for survey
of S.H. # 579 (Route 274)
formerly CH# 22.

See F.B. 14A pg 42-3 for survey
of school lot

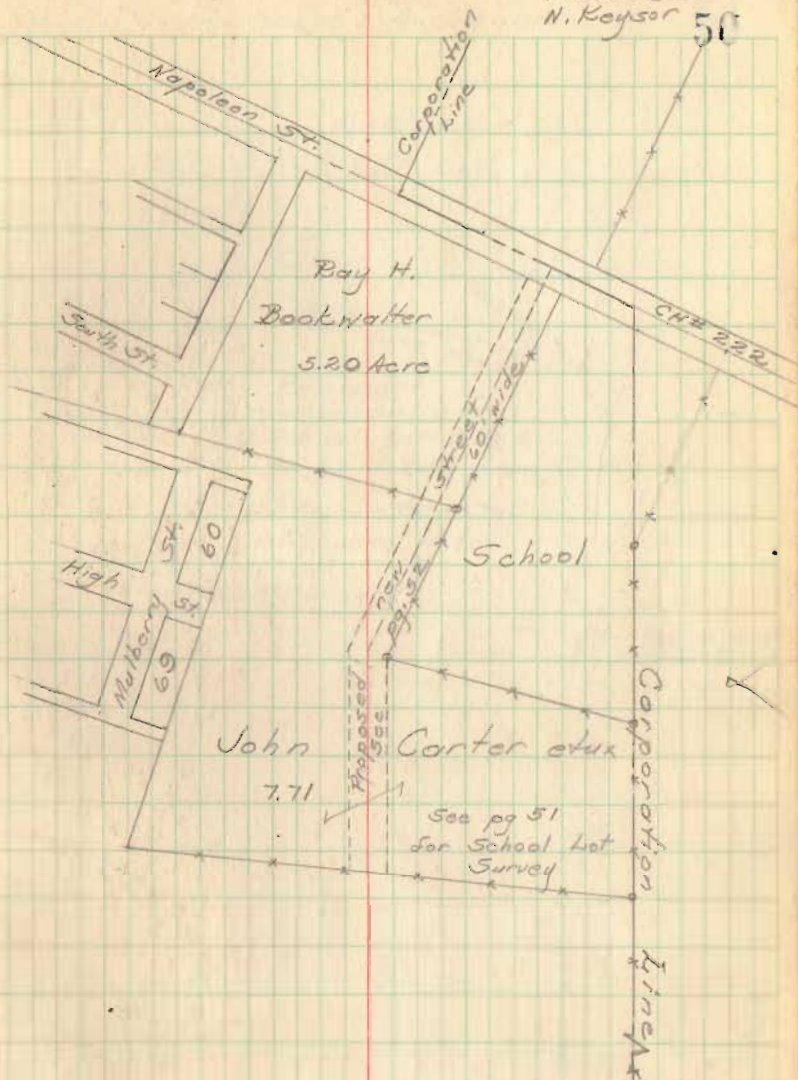
See F.B. 300 x pg 74-5 for survey
of John Carter (formerly Rude's
9.98 Acres)

2088

Jan. 22, 1951

C. Keyser
V. Detrick
N. Keyser

50



Corporation
S.H. 579

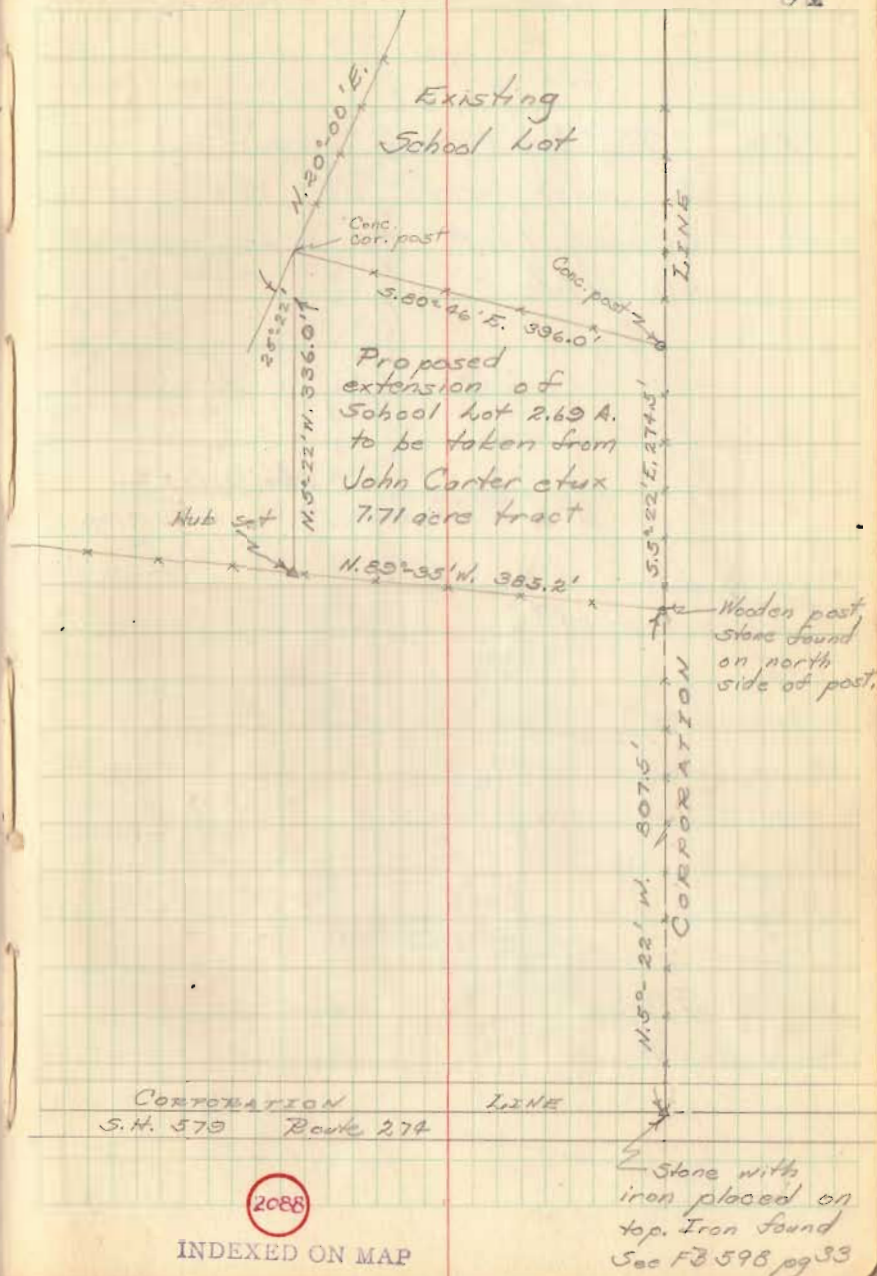
Line 7
Route 274

FB 694

Survey for
Huntsville School Board (contd)

Jan. 22, 1951

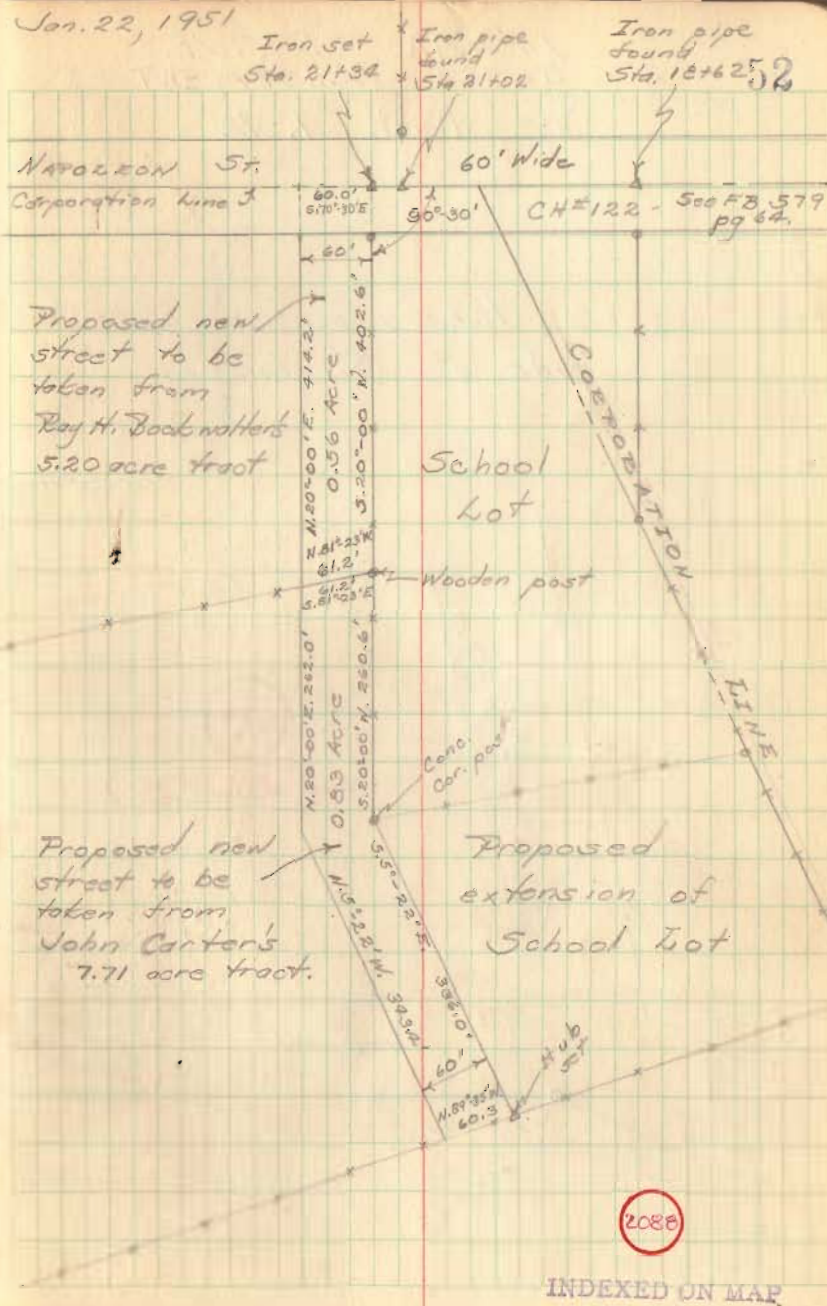
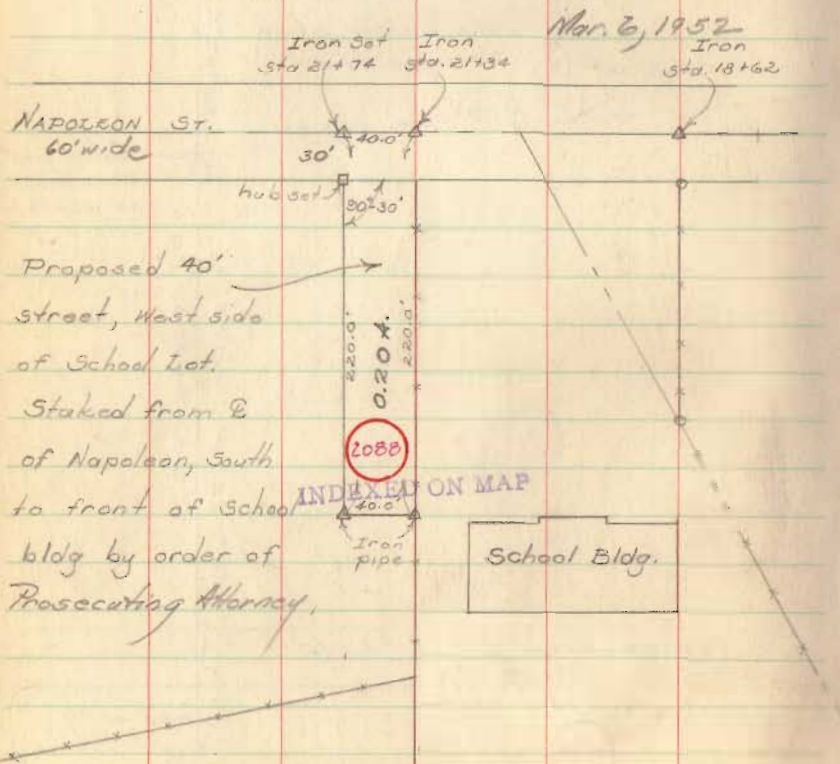
51



FB 694

Survey for
The Village Council of Huntsville (contd)

Proposed new street on
the west side of the
school lot to be
60' wide.



10-23-15

Lee Surveying and Mapping Co., Inc.



Land Surveys • Topography • Subdivisions • Construction Layout

117 N. Madriver St.
Bellefontaine OH 43311



Phone: (937) 593-7335
Fax: (937) 593-7444
surveys@lsminc.us

BOARD OF EDUCATION 5.725 ACRES

Lying in Virginia Military Survey 9904, Village of Huntsville, McArthur Township, Logan County, Ohio.

Being part of The Board of Education of Huntsville School District, one and one half acre tract as deeded and described in Volume 62, Page 97, all of the Board of Education of McArthur-Huntsville School District of the Village of Huntsville, 2 acre tract as deeded and described in Volume 112, Page 393, part of The Board of Education of McArthur-Huntsville Village School District, 0.69 acre tract as deeded and described in Volume 112, Page 394, and all of the Board of Education of the Huntsville Local School District, 2.69 acre tract as deeded and described in Volume 204, Page 446 of the Logan County Records of Deeds and being more particularly described as follows:

Commencing on a 3/4 inch iron pipe found on the intersection of the center-line of Ohio Route 274 and the east right-of-way of McArthur Street, also being an east Village of Huntsville Corporation Line.

THENCE, with the east right-of-way of McArthur Street (30 feet wide) and the Village of Huntsville Corporation Line, N 07°-09'-09"W, a distance of 807.50 feet to a 5/8 inch iron rod set at the TRUE POINT OF BEGINNING.

THENCE, with the north line of the Myers Addition (Plat Cabinet A, Slide 331), S 89°-03'-09"W, a distance of 385.29 feet to a 5/8 inch iron rod found on the east right-of-way of Myers Street, passing a 5/8 inch iron rod found at 30.82 feet.

THENCE, with the east right-of-way of Myers Street (60 feet wide), the following two courses:

N 06°-31'-20"W, a distance of 335.33 feet to a 14 inch concrete post found.

N 18°-28'-46"E, a distance of 260.45 feet to a 6 inch concrete post found, passing 5/8 inch iron rods set at 5.00 feet and 259.45 feet.

THENCE, with the east line of the Indian Lake School District 3.580 acre tract (O.R. 33, Pg. 95), N 18°-28'-46"E, a distance of 82.75 feet to a 5/8 inch iron rod set.

THENCE, S 76°-20'-33"E, a distance of 191.53 feet to a 5/8 inch iron rod set.

THENCE, N 19°-10'-32"E, a distance of 81.89 feet to a 5/8 inch iron rod set.

THENCE, N 08°-22'-25"E, a distance of 194.39 feet to a 5/8 inch iron rod set on the south right-of-way of County Highway 222.

THENCE, N 11°-34'-12"E, a distance of 30.22 feet to a MAG nail set on the center-line of County Highway 222.

INDEXED ON MAP
2088 3D-1

Lee Surveying and Mapping Co., Inc.

Land Surveys • Topography • Subdivisions • Construction Layout

117 N. Madriver St.
Bellefontaine OH 43311



Phone: (937) 593-7335
Fax: (937) 593-7444
surveys@lsmcinc.us

THENCE, with the center-line of County Highway 222 (60 feet wide), S 71°-34'-28"E, a distance of 120.45 feet to a 1-1/2 inch iron pipe found.

THENCE, with the lines of the Robert G. Hart 23 acre tract (Vol. 348, Pg. 409), the following two courses:

S 19°-10'-32"W, a distance of 349.14 feet to a 5/8 inch iron rod set on the Village of Huntsville Corporation Line, passing a 5/8 inch iron rod set at 30.00 feet.

S 07°-09'-09"E, with the Village of Huntsville Corporation Line, a distance of 542.72 feet to the point of beginning.

Containing 5.725 acres, of which 0.082 acre is within the highway right-of-way. There are 5.131 acres in the Village of Huntsville and 0.594 acre in McArthur Township.

The basis for bearings is the center-line of Napoleon Street, being S 71°-29'-39"E, and all other bearings are from angles and distances measured in a field survey by Lee Surveying and Mapping Co., Inc. on May 26, 2009, Revised October 20, 2015.



ORIGINAL STAMP IN GREEN

Description prepared by:

A handwritten signature in black ink that reads "William K. Bruce".

William K. Bruce
Professional Surveyor 7437
October 21, 2015

47931015

INDEXED ON MAP

2009 3D-2

10-23-15

Lee Surveying and Mapping Co., Inc.



APPROVED

Land Surveys • Topography • Subdivisions • Construction Layout

117 N. Madriver St.
Bellefontaine OH 43311



Phone: (937) 593-7335
Fax: (937) 593-7444
surveys@lsminc.us

BOARD OF EDUCATION 5.044 ACRES

Lying in Virginia Military Survey 9904, Village of Huntsville, McArthur Township, Logan County, Ohio.

Being part of The Board of Education of Huntsville School District, one and one half acre tract as deeded and described in Volume 62, Page 97, part of The Board of Education of McArthur-Huntsville Village School District, 0.69 acre tract as deeded and described in Volume 112, Page 394, all of The Board of Education of the Huntsville Local School District, Logan County, Ohio, 0.20 acre tract as deeded and described in Volume 206, Page 150 and all of the Indian Lake School District, 3.580 acre tract as deeded and described in Official Record 33, Page 95 of the Logan County Records of Deeds and being more particularly described as follows:

Beginning on a 5/8 inch square iron bar found on the northwest corner of Lot 147 of Brooks Allotment (Plat Cabinet A, Slide 363) on the east right-of-way of Emory Street.

THENCE, with the east right-of-way of Emory Street (40 feet wide), N 17°-34'-43"E, a distance of 96.62 feet to a 3/4 inch iron rod found.

THENCE, with the southwesterly line of the Robert A. Gibson 0.278 acre tract (O.R. 268, Pg. 802), S 71°-10'-56"E, a distance of 110.06 feet to a 3/4 inch iron rod found.

THENCE, with the east lines of the said 0.278 acre tract and the Robert A. Gibson 0.725 acre tract (O.R. 67, Pg. 831), N 17°-31'-28"E, a distance of 397.23 feet to a railroad spike found on the center-line of Napoleon Street (60 feet wide), passing a 3/4 inch iron pipe found at 367.23 feet.

THENCE, with the center-line of Napoleon Street (County Highway 222), the following three courses:

S 71°-29'-39"E, a distance of 319.03 feet to a railroad spike found.

S 70°-42'-06"E, a distance of 71.80 feet to a 1-1/2 inch iron pipe found.

S 71°-34'-28"E, passing the Village of Huntsville Corporation Line, a distance of 119.82 feet to a MAG nail set.

THENCE, S 11°-34'-12"W, a distance of 30.22 feet to a 5/8 inch iron rod set on the south right-of-way of County Highway 222.

THENCE, S 08°-22'-25"W, a distance of 194.39 feet to a 5/8 inch iron rod set.

THENCE, S 19°-10'-32"W, a distance of 81.89 feet to a 5/8 inch iron rod set.

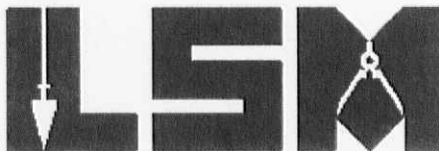
THENCE, N 76°-20'-33"W, a distance of 191.53 feet to a 5/8 inch iron rod set.

INDEXED ON MAP
2008 3D-3

Lee Surveying and Mapping Co., Inc.

Land Surveys • Topography • Subdivisions • Construction Layout

117 N. Madriver St.
Bellefontaine OH 43311



Phone: (937) 593-7335
Fax: (937) 593-7444
surveys@lsminc.us

THENCE, S 18°-28'-46"W, a distance of 82.75 feet to a 6 inch concrete post found on the east right-of-way of Myers Street (60 feet wide), referenced by a 5/8 inch iron rod set bearing S 18°-28'-46"W, a distance of 1.00 feet.

THENCE, with the north right-of-way of Myers Street, N 83°-26'-23"W, a distance of 61.42 feet to a 5/8 inch iron rod set, passing a 5/8 inch iron rod set at 1.00 feet.

THENCE, with the north lines of the Brooks Allotment (Plat Cabinet A, Slide 363), the following three courses:

N 83°-03'-44"W, a distance of 199.91 feet to a 5/8 inch iron rod set.

N 83°-50'-01"W, a distance of 16.59 feet to a 5/8 inch iron rod set.

N 81°-47'-26"W, a distance of 189.32 feet to the point of beginning.

Containing 5.044 acres, of which 0.352 acre is within the highway right-of-way. There are 4.950 acres in the Village of Huntsville and 0.094 acre in McArthur Township.

The basis for bearings is the center-line of Napoleon Street, being S 71°-29'-39"E, and all other bearings are from angles and distances measured in a field survey by Lee Surveying and Mapping Co., Inc. on May 26, 2009, Revised October 20, 2015.



Description prepared by:

A handwritten signature in black ink that reads 'William K. Bruce'.

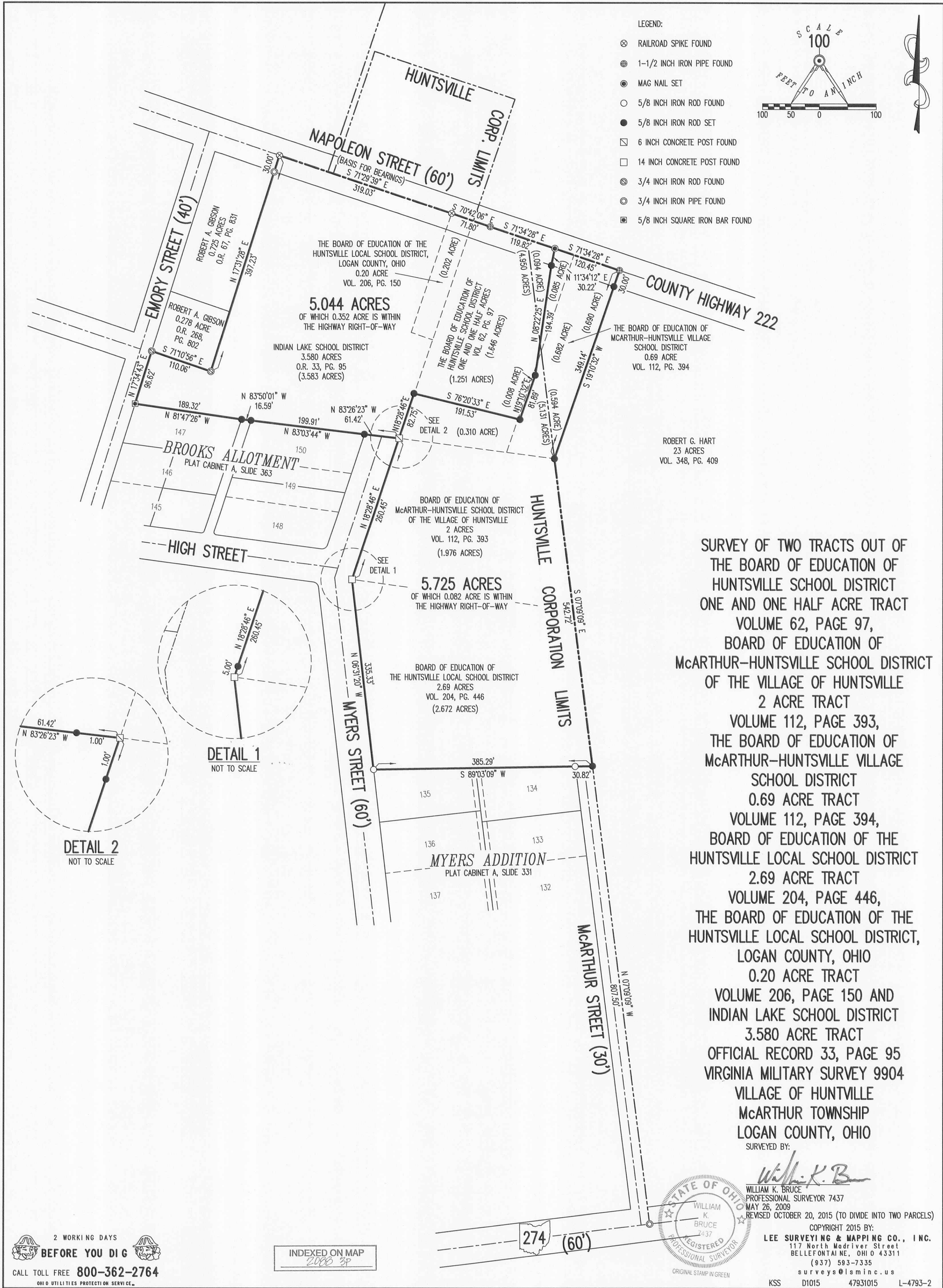
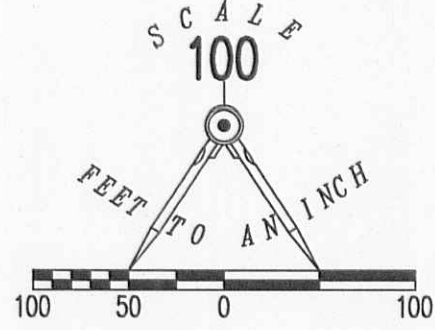
William K. Bruce
Professional Surveyor 7437
October 21, 2015

47931015

INDEXED ON MAP
2000 354

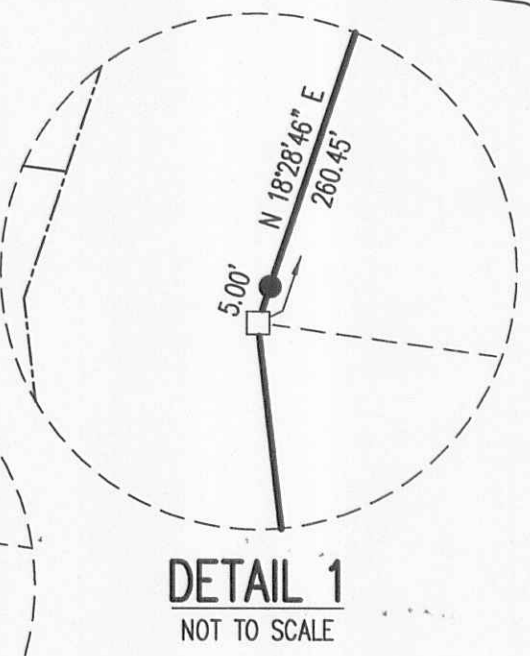
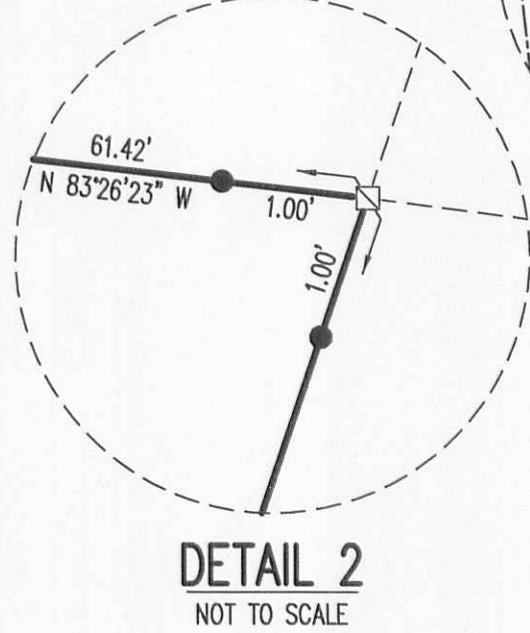
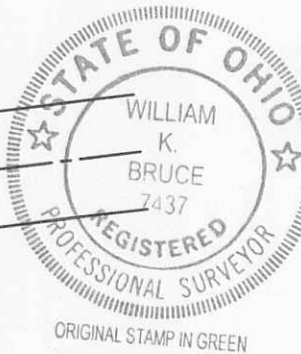
LEGEND:

- ⊗ RAILROAD SPIKE FOUND
- ⊕ 1-1/2 INCH IRON PIPE FOUND
- MAG NAIL SET
- 5/8 INCH IRON ROD FOUND
- 5/8 INCH IRON ROD SET
- ⊠ 6 INCH CONCRETE POST FOUND
- 14 INCH CONCRETE POST FOUND
- ⊙ 3/4 INCH IRON ROD FOUND
- ⊙ 3/4 INCH IRON PIPE FOUND
- 5/8 INCH SQUARE IRON BAR FOUND



SURVEY OF TWO TRACTS OUT OF THE BOARD OF EDUCATION OF HUNTSVILLE SCHOOL DISTRICT ONE AND ONE HALF ACRE TRACT VOLUME 62, PAGE 97, BOARD OF EDUCATION OF McARTHUR-HUNTSVILLE SCHOOL DISTRICT OF THE VILLAGE OF HUNTSVILLE 2 ACRE TRACT VOLUME 112, PAGE 393, THE BOARD OF EDUCATION OF McARTHUR-HUNTSVILLE VILLAGE SCHOOL DISTRICT 0.69 ACRE TRACT VOLUME 112, PAGE 394, BOARD OF EDUCATION OF THE HUNTSVILLE LOCAL SCHOOL DISTRICT 2.69 ACRE TRACT VOLUME 204, PAGE 446, THE BOARD OF EDUCATION OF THE HUNTSVILLE LOCAL SCHOOL DISTRICT, LOGAN COUNTY, OHIO 0.20 ACRE TRACT VOLUME 206, PAGE 150 AND INDIAN LAKE SCHOOL DISTRICT 3.580 ACRE TRACT OFFICIAL RECORD 33, PAGE 95 VIRGINIA MILITARY SURVEY 9904 VILLAGE OF HUNTSVILLE McARTHUR TOWNSHIP LOGAN COUNTY, OHIO

SURVEYED BY:
William K. Bruce
 WILLIAM K. BRUCE
 PROFESSIONAL SURVEYOR 7437
 MAY 26, 2009
 REVISED OCTOBER 20, 2015 (TO DIVIDE INTO TWO PARCELS)
 COPYRIGHT 2015 BY:
 LEE SURVEYING & MAPPING CO., INC.
 117 North Madriver Street
 BELLEFONTAINE, OHIO 43311
 (937) 593-7335
 surveys@lsmcinc.us
 KSS D1015 47931015 L-4793-2



INDEXED ON MAP
 2000 3P