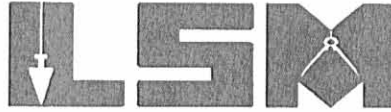


REV'D 3-31-04 SML/ML

# Lee Surveying and Mapping Co., Inc.

Land Surveys • Topography • Subdivisions • Construction Layout

117 N. Madriver St.  
Bellefontaine OH 43311



Phone: (937) 593-7335  
Fax: (937) 593-7444

## KEYKENS 20.00 FEET STORM DRAINAGE EASEMENT

Lying in Virginia Military Survey 9904, Village of Huntsville, McArthur Township, Logan County, Ohio.

Being a 20.00 feet wide storm drainage easement through the Willy F. Keykens original 3.571 acre tract as deeded and described in Official Record 122, Page 213, Tract 1 of the Logan County Records of Deeds and being more particularly described as follows:

Beginning at a point at the southwest corner of the said original 3.571 acre tract and the southeast corner of the Roger D. Rollins 0.25 acre tract (O.R. 569, Pg. 202) and on the north right-of-way of Napoleon Street (60 feet wide).

THENCE, with the east line of the said 0.25 acre tract, N 23°-50'-58"E, a distance of 25.65 feet to a point at the TRUE POINT OF BEGINNING.

THENCE, with the west line of the said original 3.571 acre tract and the east line of the said 0.25 acre tract, N 23°-50'-58"E, a distance of 47.17 feet to a point.

THENCE, S 27°-53'-07"E, a distance of 0.22 feet to a point.

THENCE, S 1°-06'-15"E, a distance of 80.47 feet to a point.

THENCE, with the north right-of-way of Napoleon Street, N 65°-42'-02"W, a distance of 22.14 feet to a point.

THENCE, N 1°-06'-15"W, a distance of 28.40 feet to the point of beginning.

The basis for bearings is the center-line of Napoleon Street, being S 65°-42'-02"E, and all other bearings are from deed description.



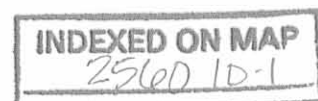
ORIGINAL STAMP IN GREEN

Description prepared by:

A handwritten signature in black ink, appearing to read 'Jeffrey I. Lee'.

Jeffrey I. Lee  
Professional Surveyor 6359  
March 24, 2004

L-3644

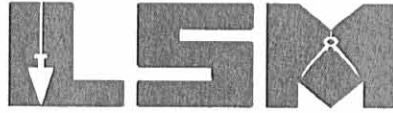


REV ID 3-31-04 8M OK

# Lee Surveying and Mapping Co., Inc.

Land Surveys • Topography • Subdivisions • Construction Layout

117 N. Madriver St.  
Bellefontaine OH 43311



Phone: (937) 593-7335  
Fax: (937) 593-7444

## KEYKENS 10.00 FEET TEMPORARY WORK EASEMENT

Lying in Virginia Military Survey 9904, Village of Huntsville, McArthur Township, Logan County, Ohio.

Being a 10.00 feet wide temporary work easement through the Willy F. Keykens original 3.571 acre tract as deeded and described in Official Record 122, Page 213, Tract 1 of the Logan County Records of Deeds and being more particularly described as follows:

Beginning at a point at the southwest corner of the said original 3.571 acre tract and the southeast corner of the Roger D. Rollins 0.25 acre tract (O.R. 569, Pg. 202) and on the north right-of-way of Napoleon Street (60 feet wide).

THENCE, with the west line of the said original 3.571 acre tract and the east line of the said 0.25 acre tract, N 23°-50'-58"E, a distance of 72.82 feet to a point at the TRUE POINT OF BEGINNING.

THENCE, with the west line of the said original 3.571 acre tract and the east line of the said 0.25 acre tract, N 23°-50'-58"E, a distance of 12.74 feet to a point.

THENCE, S 27°-53'-07"E, a distance of 10.49 feet to a point.

THENCE, S 1°-06'-15"E, a distance of 87.60 feet to a point.

THENCE, with the north right-of-way of Napoleon Street, N 65°-42'-02"W, a distance of 11.07 feet to a point.

THENCE, N 1°-06'-15"W, a distance of 80.47 feet to a point.

THENCE, N 27°-53'-07"W, a distance of 0.22 feet to the point of beginning.

The basis for bearings is the center-line of Napoleon Street, being S 65°-42'-02"E, and all other bearings are from deed description.



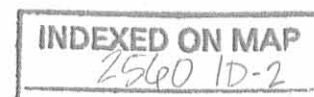
ORIGINAL STAMP IN GREEN

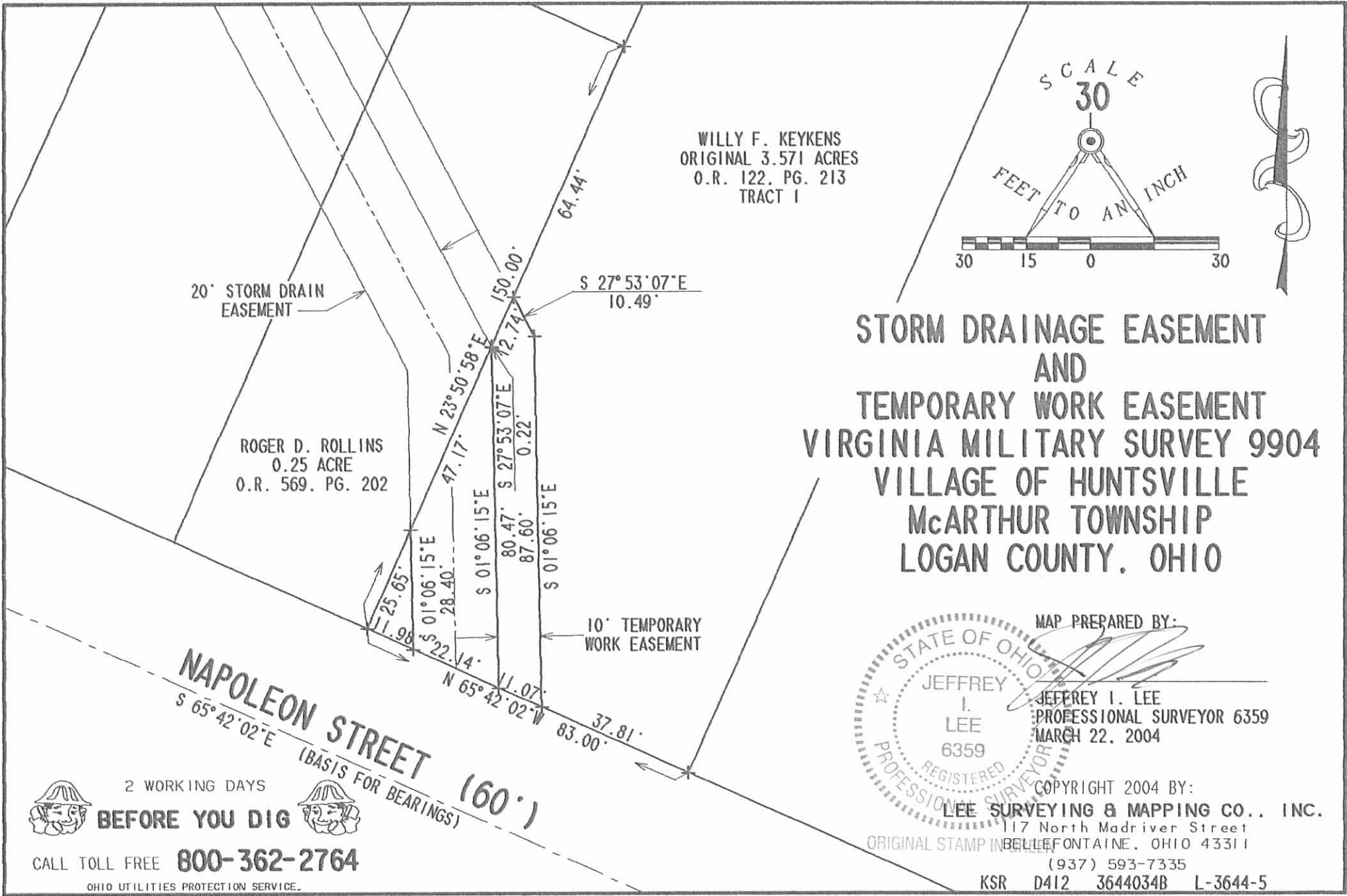
Description prepared by:

A handwritten signature in black ink, appearing to read 'J. Lee'.

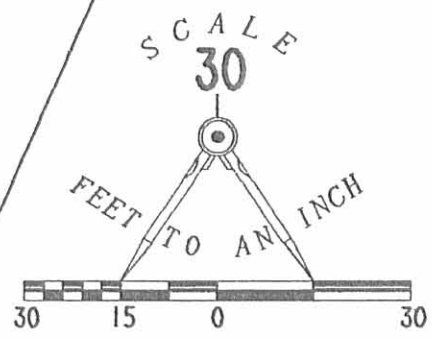
Jeffrey I. Lee  
Professional Surveyor 6359  
March 24, 2004

L-3644





WILLY F. KEYKENS  
 ORIGINAL 3.571 ACRES  
 O.R. 122. PG. 213  
 TRACT 1



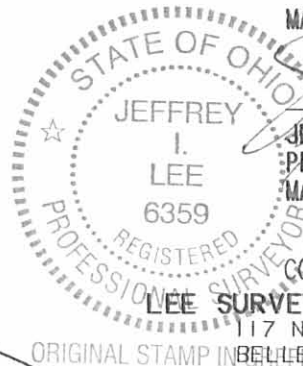
**STORM DRAINAGE EASEMENT  
 AND  
 TEMPORARY WORK EASEMENT  
 VIRGINIA MILITARY SURVEY 9904  
 VILLAGE OF HUNTSVILLE  
 McARTHUR TOWNSHIP  
 LOGAN COUNTY, OHIO**

20' STORM DRAIN  
 EASEMENT

ROGER D. ROLLINS  
 0.25 ACRE  
 O.R. 569. PG. 202

10' TEMPORARY  
 WORK EASEMENT

**NAPOLEON STREET**  
 S 65° 42' 02" E (BASIS FOR BEARINGS) (60')



MAP PREPARED BY:  
 JEFFREY I. LEE  
 PROFESSIONAL SURVEYOR 6359  
 MARCH 22, 2004

COPYRIGHT 2004 BY:  
**LEE SURVEYING & MAPPING CO., INC.**  
 117 North Madriver Street  
 BELLEVUE, OHIO 43311  
 (937) 593-7335  
 KSR D412 3644034B L-3644-5

2 WORKING DAYS  
**BEFORE YOU DIG**  
 CALL TOLL FREE **800-362-2764**  
 OHIO UTILITIES PROTECTION SERVICE.

INDEXED ON MAP  
 2560 11

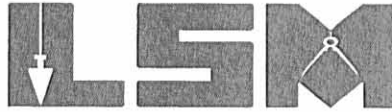
2004 3-31-04 SMM/ML

REC'D 3-31-04 SMM ok

# Lee Surveying and Mapping Co., Inc.

Land Surveys • Topography • Subdivisions • Construction Layout

117 N. Madriver St.  
Bellefontaine OH 43311



Phone: (937) 593-7335  
Fax: (937) 593-7444

## MAJOR STORM DRAINAGE EASEMENT

Lying in Virginia Military Survey 9904, Village of Huntsville, McArthur Township, Logan County, Ohio.

Being a storm drainage easement through the Robert E. Major 0.59 acre tract as deeded and described in Official Record 256, Page 899 of the Logan County Records of Deeds and being more particularly described as follows:

Beginning at a point at the northwest corner of the Melissa M. Rollins Lot No. 53 of Hover Addition No. 2 (Plat Cabinet A, Slide 159) (O.R. 355, Pg. 176, Tract II) and the southwest corner of the Melissa M. Rollins 3.073 acre tract (O.R. 355, Pg. 176, Tract I).

THENCE, with the west line of the said 3.073 acre tract and the eastern end of a 16.5 feet wide alley, N 23°-58'-05"E, a distance of 6.32 feet to a point at the TRUE POINT OF BEGINNING.

THENCE, with the north line of the said 16.5 feet wide alley, N 65°-41'-51"W, a distance of 6.02 feet to a point.

THENCE, N 62°-07'-01"E, a distance of 9.74 feet to a point.

THENCE, with the west line of the aforesaid 3.073 acre tract, S 23°-58'-05"W, a distance of 7.70 feet to the point of beginning.

The basis for bearings is the center-line of Napoleon Street (60 feet wide), being S 65°-42'-02"E, and all other bearings are from deed description.



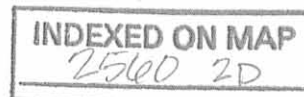
ORIGINAL STAMP IN GREEN

Description prepared by:

A handwritten signature in black ink, appearing to read 'Jeffrey I. Lee'.

Jeffrey I. Lee  
Professional Surveyor 6359  
March 24, 2004

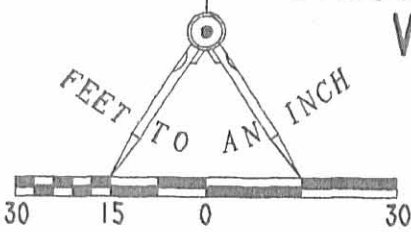
L-3644



REC'D 3-31-04 SMY ON

# STORM DRAINAGE EASEMENT VIRGINIA MILITARY SURVEY 9904 VILLAGE OF HUNTSVILLE McARTHUR TOWNSHIP LOGAN COUNTY, OHIO

SCALE  
30



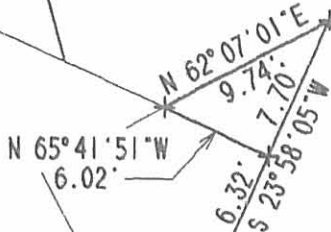
16.5' ALLEY

MELINDA CARPENTER  
0.23 ACRE  
O.R. 303. PG. 136

ROBERT E. MAJOR  
0.59 ACRE  
O.R. 256. PG. 899

MELISSA M. ROLLINS  
3.073 ACRES  
O.R. 355. PG. 176  
TRACT I

DETAIL  
NOT TO SCALE



SEE  
DETAIL

10' TEMPORARY  
WORK EASEMENT

N 59° 58' 26" W  
66.00'

20' STORM DRAIN  
EASEMENT

JOHN M. DICKERSON  
LOT 31  
HOVER ADDITION  
PLAT CABINET A, SLIDE 159  
O.R. 294, PG. 006

MELISSA M. ROLLINS  
LOT NO. 53  
HOVER ADDITION NO. 2  
PLAT CABINET A, SLIDE 159  
O.R. 355, PG. 176  
TRACT II



MAP PREPARED BY:

JEFFREY I. LEE  
PROFESSIONAL SURVEYOR 6359  
MARCH 22, 2004

(BASIS FOR BEARINGS)  
S 65° 42' 02" E

NAPOLEON STREET

(60')

FRUIT STREET (60')

INDEXED ON MAP

2560 2P

COPYRIGHT 2004 BY:  
LEE SURVEYING & MAPPING CO., INC.  
117 North Madriver Street  
BELLEFONTAINE, OHIO 43311  
(937) 593-7335  
KSR D412 3644034H L-3644-5

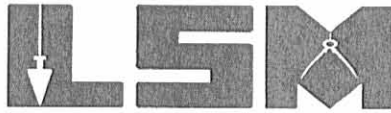
2 WORKING DAYS  
**BEFORE YOU DIG**  
CALL TOLL FREE **800-362-2764**  
OHIO UTILITIES PROTECTION SERVICE.

REC'D 3-31-04 8M/OK

# Lee Surveying and Mapping Co., Inc.

Land Surveys • Topography • Subdivisions • Construction Layout

117 N. Madriver St.  
Bellefontaine OH 43311



Phone: (937) 593-7335  
Fax: (937) 593-7444

## ROLLINS 20.00 FEET STORM DRAINAGE EASEMENT "A"

Lying in Virginia Military Survey 9904, Village of Huntsville, McArthur Township, Logan County, Ohio.

Being a 20.00 feet wide storm drainage easement through the Roger D. Rollins and Melissa M. Rollins 0.25 acre tract as deeded and described in Official Record 569, Page 202 of the Logan County Records of Deeds and being more particularly described as follows:

Beginning at a point at the southeast corner of the said 0.25 acre tract and the southwest corner of the Willy F. Keykens original 3.571 acre tract (O.R. 122, Pg. 213, Tract 1) and on the north right-of-way of Napoleon Street (60 feet wide).

THENCE, with the west line of the said original 3.571 acre tract and the east line of the said 0.25 acre tract, N 23°-50'-58"E, a distance of 25.65 feet to a point at the TRUE POINT OF BEGINNING.

THENCE, N 1°-06'-15"W, a distance of 37.81 feet to a point.

THENCE, N 27°-52'-59"W, a distance of 43.36 feet to a point.

THENCE, with the west line of the aforesaid 0.25 acre tract and the east line of the Melissa M. Rollins and Roger D. Rollins Lot No. 53 of Hover Addition No. 2 (Plat Cabinet A, Slide 159) (O.R. 355, Pg. 176, Tract II), N 23°-50'-58"E, a distance of 25.47 feet to a point.

THENCE, S 27°-52'-59"E, a distance of 63.68 feet to a point.

THENCE, with the west line of the aforesaid original 3.571 acre tract, S 23°-50'-58"W, a distance of 47.17 feet to the point of beginning.

The basis for bearings is the center-line of Napoleon Street, being S 65°-42'-02"E, and all other bearings are from deed description.



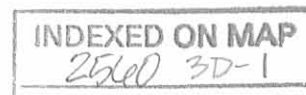
ORIGINAL STAMP IN GREEN

Description prepared by:

A handwritten signature in black ink, appearing to read 'J. Lee'.

Jeffrey I. Lee  
Professional Surveyor 6359  
March 24, 2004

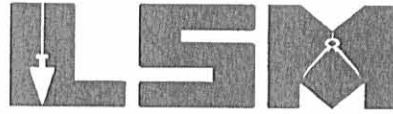
L-3644



REC'D 3-31-04 SMM/OLC  
**Lee Surveying and Mapping Co., Inc.**

Land Surveys • Topography • Subdivisions • Construction Layout

117 N. Madriver St.  
Bellefontaine OH 43311



Phone: (937) 593-7335  
Fax: (937) 593-7444

**ROLLINS  
10.00 FEET TEMPORARY WORK EASEMENT "TA"**

Lying in Virginia Military Survey 9904, Village of Huntsville, McArthur Township, Logan County, Ohio.

Being a 10.00 feet wide temporary work easement through the Roger D. Rollins and Melissa M. Rollins 0.25 acre tract as deeded and described in Official Record 569, Page 202 of the Logan County Records of Deeds and being more particularly described as follows:

Beginning at a point at the southeast corner of the said 0.25 acre tract and the southwest corner of the Willy F. Keykens original 3.571 acre tract (O.R. 122, Pg. 213, Tract 1) and on the north right-of-way of Napoleon Street (60 feet wide).

THENCE, with the west line of the said original 3.571 acre tract and the east line of the said 0.25 acre tract, N 23°-50'-58"E, a distance of 72.82 feet to a point at the TRUE POINT OF BEGINNING.

THENCE, N 27°-52'-59"W, a distance of 63.68 feet to a point.

THENCE, with the west line of the aforesaid 0.25 acre tract and the east line of the Melissa M. Rollins and Roger D. Rollins Lot No. 53 of Hover Addition No. 2 (Plat Cabinet A, Slide 159) (O.R. 355, Pg. 176, Tract II), N 23°-50'-58"E, a distance of 12.74 feet to a point.

THENCE, S 27°-52'-59"E, a distance of 63.68 feet to a point.

THENCE, with the west line of the aforesaid original 3.571 acre tract, S 23°-50'-58"W, a distance of 12.74 feet to the point of beginning.

The basis for bearings is the center-line of Napoleon Street, being S 65°-42'-02"E, and all other bearings are from deed description.



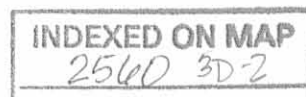
ORIGINAL STAMP IN GREEN

Description prepared by:

A handwritten signature in black ink, appearing to read 'Jeffrey I. Lee'.

Jeffrey I. Lee  
Professional Surveyor 6359  
March 24, 2004

L-3644

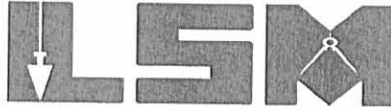


RECID 3-31-04 SMJ/AL

# Lee Surveying and Mapping Co., Inc.

Land Surveys • Topography • Subdivisions • Construction Layout

117 N. Madriver St.  
Bellefontaine OH 43311



Phone: (937) 593-7335  
Fax: (937) 593-7444

## ROLLINS 20.00 FEET STORM DRAINAGE EASEMENT "B"

Lying in Virginia Military Survey 9904, Village of Huntsville, McArthur Township, Logan County, Ohio.

Being a 20.00 feet wide storm drainage easement through the Melissa M. Rollins and Roger D. Rollins Lot No. 53 of Hover Addition No. 2 (Plat Cabinet A, Slide 159) as deeded and described in Official Record 355, Page 176, Tract II of the Logan County Records of Deeds and being more particularly described as follows:

Beginning at a point at the southeast corner of Lot No. 53 and the southwest corner of the Roger D. Rollins and Melissa M. Rollins 0.25 acre tract (O.R. 569, Pg. 202) and on the north right-of-way of Napoleon Street (60 feet wide).

THENCE, with the east line of Lot No. 53 and the west line of the said 0.25 acre tract, N 23°-50'-58"E, a distance of 86.40 feet to a point at the TRUE POINT OF BEGINNING.

THENCE, N 27°-52'-59"W, a distance of 83.65 feet to a point.

THENCE, with the west line of Lot No. 53 and the eastern end of a 16.5 feet wide alley, N 24°-17'-55"E, a distance of 7.50 feet to a point.

THENCE, with the north line of Lot No. 53 and the south line of the Melissa M. Rollins and Roger D. Rollins 3.073 acre tract (O.R. 355, Pg. 176, Tract I), S 59°-58'-26"E, a distance of 26.50 feet to a point.

THENCE, S 27°-52'-59"E, a distance of 50.06 feet to a point.

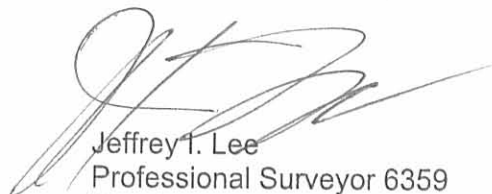
THENCE, with the east line of Lot No. 53 and the west line of the aforesaid 0.25 acre tract, S 23°-50'-58"W, a distance of 25.47 feet to the point of beginning.

The basis for bearings is the center-line of Napoleon Street, being S 65°-42'-02"E, and all other bearings are from deed description.

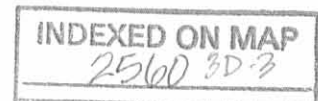


ORIGINAL STAMP IN GREEN

Description prepared by:

  
Jeffrey I. Lee  
Professional Surveyor 6359  
March 24, 2004

L-3644



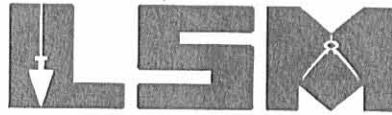


DEED 3-31-04 SVM OK

# Lee Surveying and Mapping Co., Inc.

Land Surveys • Topography • Subdivisions • Construction Layout

117 N. Madriver St.  
Bellefontaine OH 43311



Phone: (937) 593-7335  
Fax: (937) 593-7444

## ROLLINS 10.00 FEET TEMPORARY WORK EASEMENT "TB"

Lying in Virginia Military Survey 9904, Village of Huntsville, McArthur Township, Logan County, Ohio.

Being a 10.00 feet wide temporary work easement through the Melissa M. Rollins and Roger D. Rollins Lot No. 53 of Hover Addition No. 2 (Plat Cabinet A, Slide 159) as deeded and described in Official Record 355, Page 176, Tract II of the Logan County Records of Deeds and being more particularly described as follows:

Beginning at a point at the southeast corner of Lot No. 53 and the southwest corner of the Roger D. Rollins and Melissa M. Rollins 0.25 acre tract (O.R. 569, Pg. 202) and on the north right-of-way of Napoleon Street (60 feet wide).

THENCE, with the east line of Lot No. 53 and the west line of the said 0.25 acre tract, N 23°-50'-58"E, a distance of 111.87 feet to a point at the TRUE POINT OF BEGINNING.

THENCE, N 27°-52'-59"W, a distance of 50.06 feet to a point.

THENCE, with the north line of Lot No. 53 and the south line of the Melissa M. Rollins and Roger D. Rollins 3.073 acre tract (O.R. 355, Pg. 176, Tract I), S 59°-58'-26"E, a distance of 18.82 feet to a point.

THENCE, S 27°-52'-59"E, a distance of 26.18 feet to a point.

THENCE, with the east line of Lot No. 53 and the west line of the aforesaid 0.25 acre tract, S 23°-50'-58"W, a distance of 12.74 feet to the point of beginning.

The basis for bearings is the center-line of Napoleon Street, being S 65°-42'-02"E, and all other bearings are from deed description.

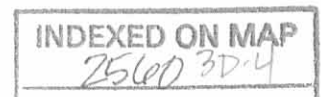


ORIGINAL STAMP IN GREEN

Description prepared by:

  
Jeffrey I. Lee  
Professional Surveyor 6359  
March 24, 2004

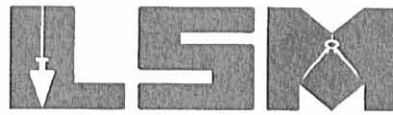
L-3644



REC'D 3-31-04 SMJ/OK  
**Lee Surveying and Mapping Co., Inc.**

Land Surveys • Topography • Subdivisions • Construction Layout

117 N. Madriver St.  
Bellefontaine OH 43311



Phone: (937) 593-7335  
Fax: (937) 593-7444

**ROLLINS  
STORM DRAINAGE EASEMENT "C"**

Lying in Virginia Military Survey 9904, Village of Huntsville, McArthur Township, Logan County, Ohio.

Being a storm drainage easement through the Melissa M. Rollins and Roger D. Rollins 3.073 acre tract as deeded and described in Official Record 355, Page 176, Tract I of the Logan County Records of Deeds and being more particularly described as follows:

Beginning at a point at the southeast corner of the Melissa M. Rollins and Roger D. Rollins Lot No. 53 of Hover Addition No. 2 (Plat Cabinet A, Slide 159) (O.R. 355, Pg. 176, Tract II) and the southwest corner of the Roger D. Rollins and Melissa M. Rollins 0.25 acre tract (O.R. 569, Pg. 202) and on the north right-of-way of Napoleon Street (60 feet wide).

THENCE, with the east line of Lot No. 53 and the west line of the said 0.25 acre tract, N 23°-50'-58"E, a distance of 138.60 feet to a point.

THENCE, with the north line of Lot No. 53, and the south line of the said 3.073 acre tract, N 59°-58'-26"W, a distance of 39.50 feet to a point at the TRUE POINT OF BEGINNING.

THENCE, continuing with the north line of Lot No. 53, and the south line of the said 3.073 acre tract, N 59°-58'-26"W, a distance of 26.50 feet to a point.

THENCE, with the west line of the said 3.073 acre tract, the eastern end of a 16.5 feet wide alley and the east line of the Robert E. Major 0.59 acre tract (O.R. 256, Pg. 899), N 23°-58'-05"E, a distance of 14.02 feet to a point.

THENCE, N 62°-07'-01"E, a distance of 3.06 feet to a point.

THENCE, S 27°-52'-59"E, a distance of 31.07 feet to the point of beginning.

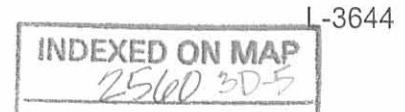
The basis for bearings is the center-line of Napoleon Street, being S 65°-42'-02"E, and all other bearings are from deed description.



ORIGINAL STAMP IN GREEN

Description prepared by:

A handwritten signature in black ink, appearing to be 'J. Lee'.  
Jeffrey I. Lee  
Professional Surveyor 6359  
March 24, 2004

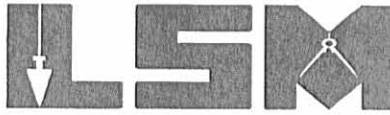


REC'D 3-31-04 SMM OK

# Lee Surveying and Mapping Co., Inc.

Land Surveys • Topography • Subdivisions • Construction Layout

117 N. Madriver St.  
Bellefontaine OH 43311



Phone: (937) 593-7335  
Fax: (937) 593-7444

## ROLLINS 10.00 FEET TEMPORARY WORK EASEMENT "TC"

Lying in Virginia Military Survey 9904, Village of Huntsville, McArthur Township, Logan County, Ohio.

Being a 10.00 feet wide temporary work easement through the Melissa M. Rollins and Roger D. Rollins 3.073 acre tract as deeded and described in Official Record 355, Page 176, Tract I of the Logan County Records of Deeds and being more particularly described as follows:

Beginning at a point at the southeast corner of the Melissa M. Rollins and Roger D. Rollins Lot No. 53 of Hover Addition No. 2 (Plat Cabinet A, Slide 159) (O.R. 355, Pg. 176, Tract II) and the southwest corner of the Roger D. Rollins and Melissa M. Rollins 0.25 acre tract (O.R. 569, Pg. 202) and on the north right-of-way of Napoleon Street (60 feet wide).

THENCE, with the east line of Lot No. 53 and the west line of the said 0.25 acre tract, N 23°-50'-58"E, a distance of 138.60 feet to a point.

THENCE, with the north line of Lot No. 53, and the south line of the said 3.073 acre tract, N 59°-58'-26"W, a distance of 20.68 feet to a point at the TRUE POINT OF BEGINNING.

THENCE, continuing with the north line of Lot No. 53, and the south line of the said 3.073 acre tract, N 59°-58'-26"W, a distance of 18.82 feet to a point.

THENCE, N 27°-52'-59"W, a distance of 31.07 feet to a point.

THENCE, N 62°-07'-01"E, a distance of 10.00 feet to a point.

THENCE, S 27°-52'-59"E, a distance of 47.06 feet to the point of beginning.

The basis for bearings is the center-line of Napoleon Street, being S 65°-42'-02"E, and all other bearings are from deed description.

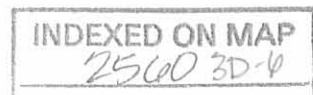


Description prepared by:

A handwritten signature in black ink, appearing to read 'Jeffrey I. Lee'.

Jeffrey I. Lee  
Professional Surveyor 6359  
March 24, 2004

L-3644



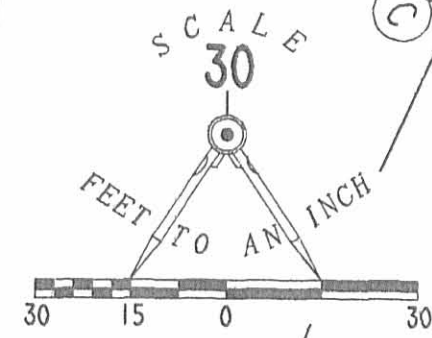
16.5' ALLEY

ROBERT E. MAJOR  
0.59 ACRE  
O.R. 256, PG. 899

MELISSA M. ROLLINS AND  
ROGER D. ROLLINS  
3.073 ACRES  
O.R. 355, PG. 176  
TRACT I

N 23° 50' 58" E  
11.40'

ROGER D. ROLLINS AND  
MELISSA M. ROLLINS  
0.25 ACRE  
O.R. 569, PG. 202



JOHN M. DICKERSON  
LOT 31  
HOVER ADDITION  
PLAT CABINET A  
SLIDE 159  
O.R. 294, PG. 6

MELISSA M. ROLLINS AND  
ROGER D. ROLLINS  
LOT NO. 53  
HOVER ADDITION NO. 2  
PLAT CABINET A, SLIDE 159  
O.R. 355, PG. 176  
TRACT II

10' TEMPORARY  
WORK EASEMENT

NAPOLEON STREET  
(BASIS FOR BEARINGS)  
S 65° 42' 02" E

STORM DRAINAGE EASEMENT  
AND  
TEMPORARY WORK EASEMENT

VIRGINIA MILITARY SURVEY 9904  
VILLAGE OF HUNTSVILLE  
McARTHUR TOWNSHIP  
LOGAN COUNTY, OHIO

MAP PREPARED BY:

JEFFREY L. LEE  
PROFESSIONAL SURVEYOR 6359  
MARCH 22, 2004

COPYRIGHT 2004 BY:

LEE SURVEYING & MAPPING CO., INC.  
117 North Madriver Street  
BELLEFONTAINE, OHIO 43311



2 WORKING DAYS  
BEFORE YOU DIG



CALL TOLL FREE 800-362-2764

OHIO UTILITIES PROTECTION SERVICE

(937) 593-7335  
KSR D412 3644034A L-3644-5



# Lee Surveying and Mapping Co., Inc.



Farm Surveys • Lot Surveys • Topography • Subdivisions • Construction Layout

117 NORTH MADRIVER STREET  
BELLEFONTAINE, OHIO 43311

(937) 593-7335  
FAX (937) 593-7444

## KEYKENS 0.498 ACRE

Lying in Virginia Military Survey 9904, Village of Huntsville, McArthur Township, Logan County, Ohio.

Being out of the Willy F. Keykens original 3.571 acre tract as deeded and described in Official Record 122, Page 213, Tract I, of the Logan County Records of Deeds and being more particularly described as follows:

Beginning at a railroad spike found on the center-line of Napoleon Street at the intersection with the center-line of Fruit Street.

THENCE, with the center-line of Napoleon Street (60 feet wide), S 74°-17'-00" E, a distance of 149.38 feet to a MAG nail set.

THENCE, N 15°-43'-00" E, a distance of 30.29 feet to a 5/8 inch iron rod set on the southeast corner of the Tamara L. Landis 0.25 acre tract, (O.R. 326, Pg. 660), and the TRUE POINT OF BEGINING.

THENCE, with the east line of the said 0.25 acre tract and said 0.25 acre tract extended, N 15°-16'-00" E, a distance of 262.00 feet to a 5/8 inch iron rod set, passing a 5/8 inch iron rod set at 150.00 feet.

THENCE, S 74°-16'-55" E, a distance of 82.75 feet to a 5/8 inch iron rod set.

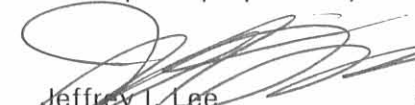
THENCE, with the west line extended and west line of the D. Troyer MacPherson 0.48 acre tract, (O.R. 211, Pg. 683), S 15°-12'-40" W, a distance of 262.00 feet to a 1 inch iron pipe found on the north right-of-way of Napoleon Street, passing a 1 inch iron pipe found at 56.84 feet.

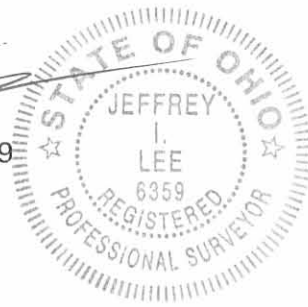
THENCE, with the north right-of-way of Napoleon Street, N 74°-17'-00" W, a distance of 83.00 feet to the point of beginning.

Containing 0.498 acre.

The basis for bearings is the center-line of Napoleon Street, being N 74°-17'-00" W, and all other bearings are from angles and distances measured in a field survey by Lee Surveying and Mapping Co., Inc. on December 23, 1997.

Description prepared by:

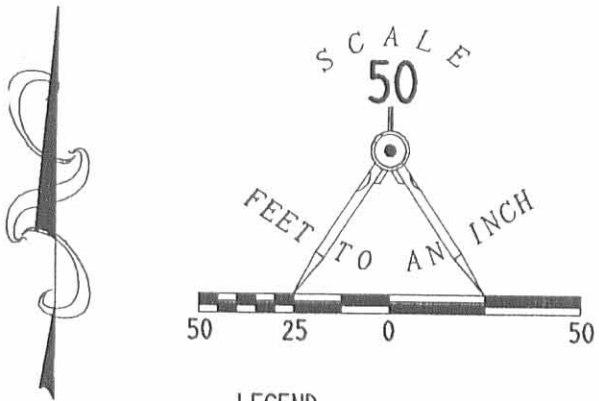
  
Jeffrey I. Lee  
Professional Surveyor 6359  
December 26, 1997



L-322

ORIGINAL STAMP IN GREEN

INDEXED ON MAP  
2560 40



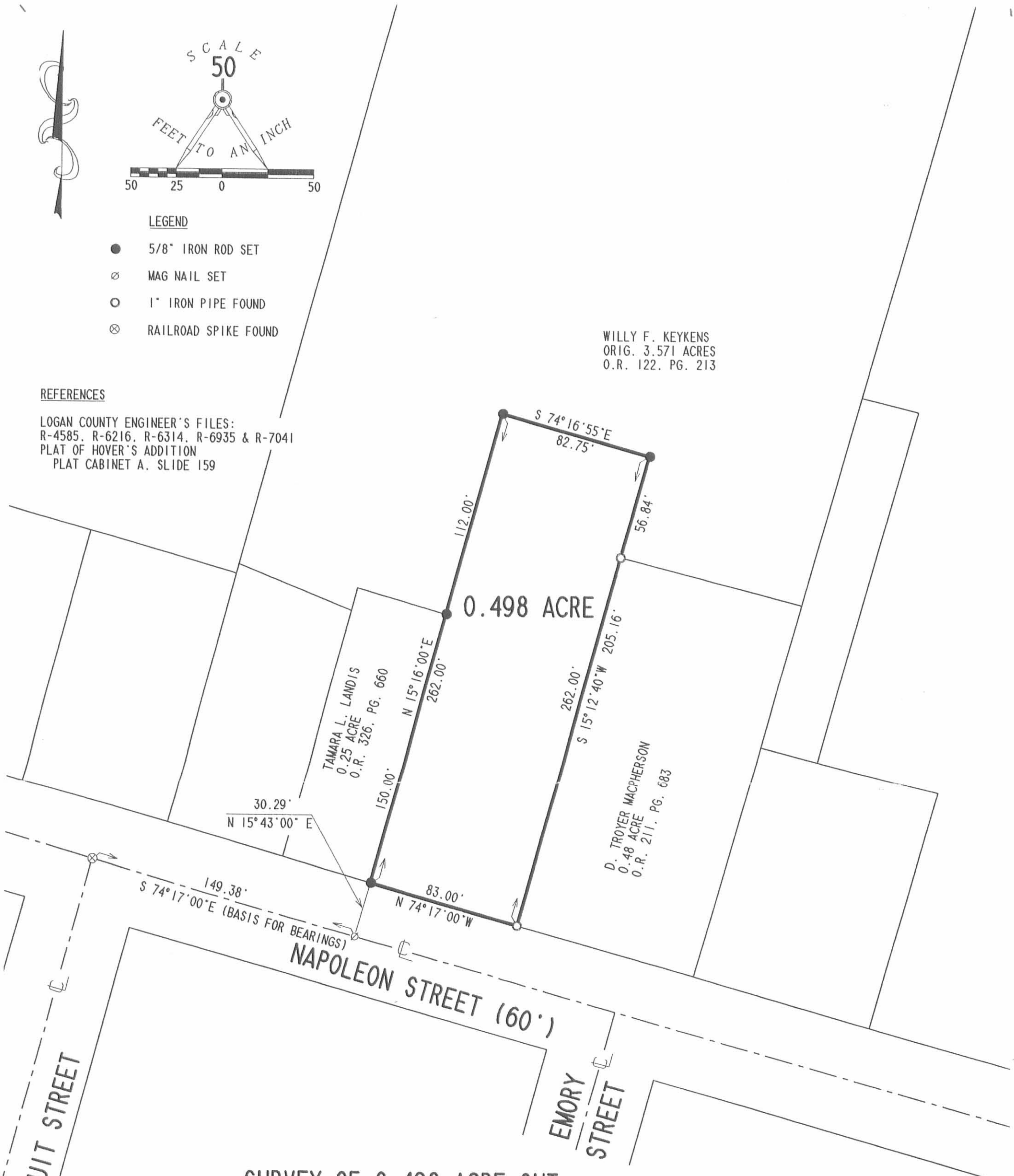
**LEGEND**

- 5/8" IRON ROD SET
- ⊗ MAG NAIL SET
- 1" IRON PIPE FOUND
- ⊗ RAILROAD SPIKE FOUND

**REFERENCES**

LOGAN COUNTY ENGINEER'S FILES:  
 R-4585, R-6216, R-6314, R-6935 & R-7041  
 PLAT OF HOVER'S ADDITION  
 PLAT CABINET A, SLIDE 159

WILLY F. KEYKENS  
 ORIG. 3.571 ACRES  
 O.R. 122. PG. 213



**SURVEY OF 0.498 ACRE OUT  
 OF THE WILLY F. KEYKENS  
 ORIGINAL 3.571 ACRE TRACT  
 OFFICIAL RECORD 122, PAGE 213, TRACT 1  
 VIRGINIA MILITARY SURVEY 9904  
 VILLAGE OF HUNTSVILLE  
 McARTHUR TOWNSHIP  
 LOGAN COUNTY, OHIO**

SURVEYED BY:

*Jeffrey I. Lee*  
 JEFFREY I. LEE  
 PROFESSIONAL SURVEYOR 6359  
 DECEMBER 23, 1997



ORIGINAL STAMP IN GREEN

COPYRIGHT 1997 BY:  
**LEE SURVEYING & MAPPING CO., INC.**  
 117 North Madriver Street  
 BELLEFONTAINE, OHIO 43311  
 (937) 593-7335

2 WORKING DAYS  
**BEFORE YOU DIG**  
 CALL TOLL FREE **800-362-2764**  
 OHIO UTILITIES PROTECTION SERVICE.

INDEXED ON MAP  
 2560 4P

SEE SURVEYOR'S AFFIDAVIT

# Lee Surveying and Mapping Co.



Farm Surveys • Lot Surveys • Topography • Subdivisions • Construction Layout

855 EAST SANDUSKY AVENUE  
BELLEFONTAINE, OHIO 43311

(513) 593-5780

CLAYTON M. LEE, P.S.  
JEFFREY I. LEE, P.S.

## RALPH HUGHES SURVEY

Lying in V.M.S. 9904, in the Village of Huntsville, McArthur Township, Logan County, Ohio and embracing all three (3) of those parcels deeded and described in Volume 324, Page 1003, 1004 of the Logan County Records of Deeds and better described as follows:

Beginning at an iron pipe found at the southwest corner of that 0.48 acre lot deeded and recorded in Volume 368, Page 595 and lying in the north line of Napoleon Street a distance of 199.0 feet easterly from the southeast corner of Lot No. 31.

THENCE, with the said north line of Napoleon Street, S 74°-17' E, a distance of 83.0 feet to the southeast corner of that lot deeded and described in Volume 369, Page 6.

THENCE, with the east line of said lot, N 15°-05' W, a distance of 150.0 feet to the northeast corner of said lot.

THENCE, with the north line of said lot, N 74°-17' W, a distance of 50.0 feet to the northwest corner of said lot.

THENCE, with the west line of said lot, S 15°-16' W, a distance of 11.4 feet to the northeast corner of a lot delineated in Volume 'S', Page 547.

THENCE, with the north line of said lot, N 68°-33' W, A distance of 66.0 feet to an iron rod set in the east terminus of an alley.

THENCE, with the east line of that 0.59 acres deeded and described in Volume 356, Page 784, N 15°-10' E, a distance of 232.7 feet to the northeast corner of said 0.59 acres.

THENCE, N 15°-17' E, a distance of 262.0 feet to an iron rod found at the northeast corner of a 0.97 acre tract and being in the south line of the Smith 17.62 acre tract.

THENCE, with the south line of said 17.62 acres, S 75°-30' E, a distance of 303.0 feet to an iron rod found at the southeast corner of said 17.62 acres and being in the west line of a 0.55 acre tract.

THENCE, with said west line, S 15°-40' W, a distance of 437.3 feet to the northeast corner of that aforementioned 0.48 acre lot.

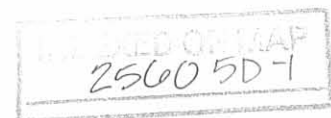
THENCE, with the north line of the 0.48 acre lot, N 76°-12' W, a distance of 101.7 feet to the northwest corner of said lot.

THENCE, with the west line of said lot, S 15°-05' W, a distance of 204.6 feet to the point of beginning. Containing 3.571 acres.

Last previous deed reference: Volume 324, Page 1003.

Surveyed by:

Clayton M. Lee  
Clayton M. Lee  
Reg. Surveyor No 6181  
10-21-77



SURVEYOR'S AFFIDAVIT

STATE OF OHIO

RECEIVED \_\_\_\_\_

TIME \_\_\_\_\_

RECORDED \_\_\_\_\_

OFFICIAL RECORD \_\_\_\_\_ PAGE \_\_\_\_\_

COUNTY RECORDER ss:

Clayton M. Lee, being first duly sworn, deposes and says that he is a Registered Professional Surveyor under the laws of the State of Ohio, being Surveyor No. 6181 and that he is making this affidavit for the purposes of correcting the description to certain real estate situated in the Village of Huntsville, V.M.S. 9904, McArthur Township, Logan County, Ohio, presently owned by Willy F. Keykens by virtue of a Deed recorded in Official Record 122, Page 213 of the Logan County Records of Deeds.

The corrected description being as follows with the corrections underlined:

Lying in V.M.S. 9904, in the Village of Huntsville, McArthur Township, Logan County, Ohio and embracing all three (3) of those parcels deeded and described in Volume 324, Page 1003, 1004 of the Logan County Records of Deeds and better described as follows:

Beginning at an iron pipe found at the southwest corner of that 0.48 acre lot deeded and recorded in Volume 368, Page 595 and lying in the north line of Napoleon Street a distance of 199.0 feet easterly from the southeast corner of Lot No. 31.

THENCE, with the said north line of Napoleon Street, N 74°-17' W, a distance of 83.0 feet to the southeast corner of that lot deeded and described in Volume 369, Page 6.

THENCE, with the east line of said lot, N 15°-16' E, a distance of 150.0 feet to the northeast corner of said lot.

THENCE, with the north line of said lot, N 74°-17' W, a distance of 50.0 feet to the northwest corner of said lot.

THENCE, with the west line of said lot, S 15°-16' W, a distance of 11.4 feet to the northeast corner of a lot delineated in Volume 'S', Page 547.

THENCE, with the north line of said lot, N 68°-33' W, a distance of 66.0 feet to an iron rod set in the east terminus of an alley.

THENCE, with the east line of that 0.59 acres deeded and described in Volume 356, Page 784, N 15°-10' E, a distance of 232.7 feet to the northeast corner of said 0.59 acres.

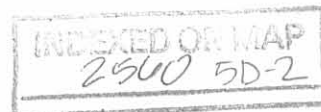
THENCE, N 15°-17' E, a distance of 262.0 feet to an iron rod found at the northeast corner of a 0.97 acre tract and being in the south line of the Smith 17.62 acre tract.

THENCE, with the south line of said 17.62 acres, S 75°-30' E, a distance of 303.0 feet to an iron rod found at the southeast corner of said 17.62 acres and being in the west line of a 0.55 acre tract.

THENCE, with said west line, S 15°-40' W, a distance of 437.3 feet to the northeast corner of that aforementioned 0.48 acre lot.

THENCE, with the north line of the 0.48 acre lot, N 76°-12' W, a distance of 101.7 feet to the northwest corner of said lot.

THENCE, with the west line of said lot, S 15°-05' W, a distance of 204.6 feet to the point of beginning. Containing 3.571 acres. PARCEL #24-048-12-01-003





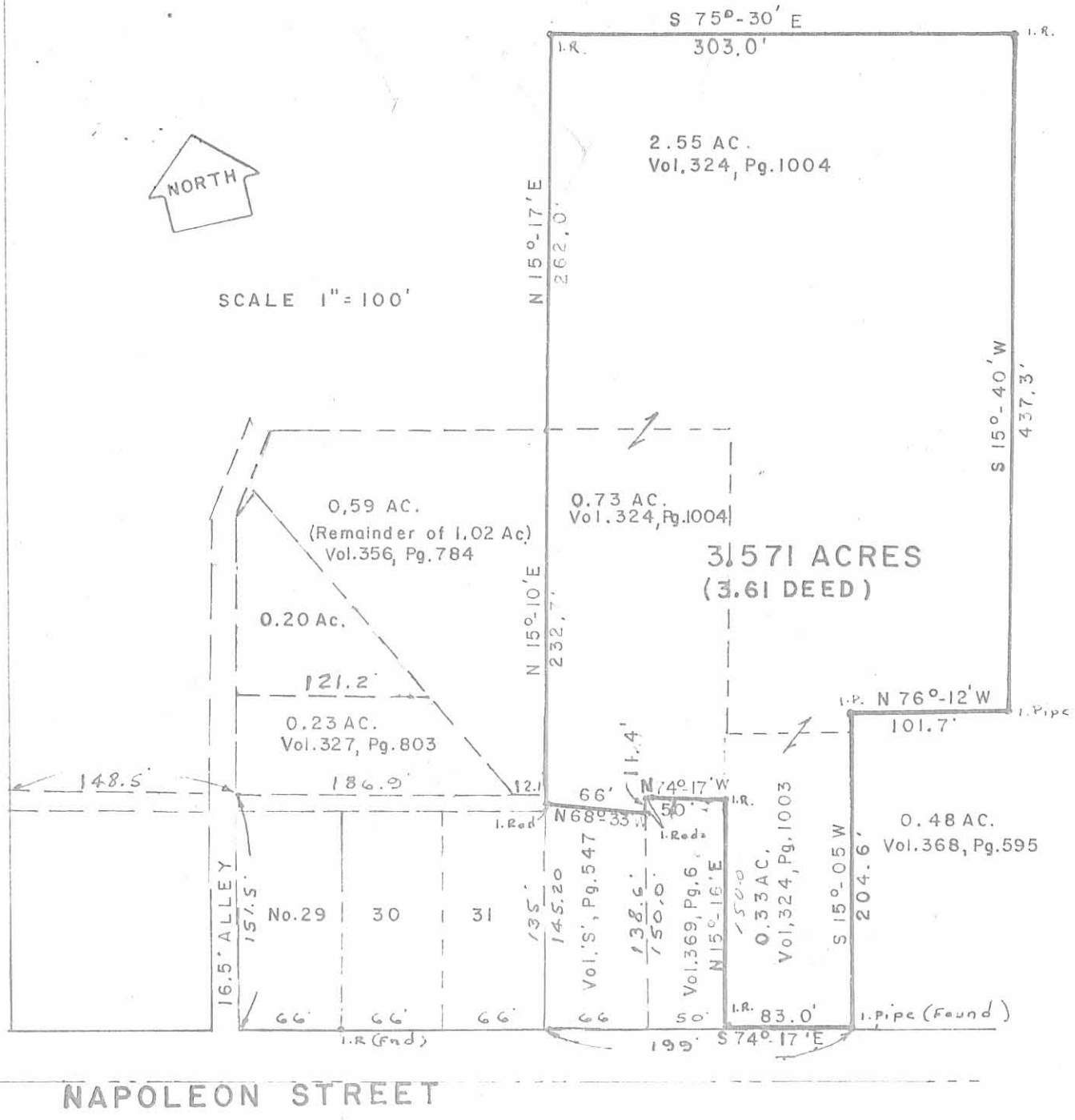
**Lee Surveying & Mapping Co.**

855 E. Sandusky Ave.  
 BELLEFONTAINE, OHIO 43311  
 (513) 593-5780



SCALE 1" = 100'

CCC & ST. L. RR.



**NAPOLEON STREET**

2560 5P

INDEXED ON MAP

**SURVEY OF 3.571 ACRES (RALPH E. HUGHES)**  
**V.M.S. 9904**  
**VILLAGE OF HUNTSVILLE**  
**McARTHUR TOWNSHIP,**  
**LOGAN COUNTY, OHIO**

Surveyed by:  
*Clayton M. Lee*  
 Clayton M. Lee  
 Reg. Surveyor 6181  
 10-21-77

Nagle Survey Huntsville

0.48 Acre

Feb. 1959

The following described land in the Village of Huntsville, McArthur Township Logan County, Ohio and being in V.M.S. 9904

Beginning at a hub stake at the S.E. corner of Lot Number 31 at the north side of Napoleon Street thence with the north side of Napoleon Street S. 74 - 17 E. 199.00 feet to an iron at the S.E. corner of Lloyd Hughes 0.45 acre tract for the beginning point of this survey thence with the east side of said Hughes tract N. 15 - 05 E. 204.60 feet to an iron the last described line passing the N.E. corner of said Hughes tract at 193.50 feet thence following the present fence line S. 76 - 12 E. 101.70 feet to an iron in the west line of Carl L. Hanson tract thence with the west side of said Hanson tract S. 15 - 01 W. 208.20 feet to an iron at the north side of Napoleon Street thence with the north side of Napoleon Street E. 74 - 17 W. 102.00 feet to the place of beginning said described tract containing 0.48 of one acre and being out of the S.E. corner of the present 6.22 acre tract.

cc  
Logan County Engineer.

*one Plat Book*

INDEXED ON MAP  
2560 6D1

Smith — Hughes Survey      Huntsville      March 1959      2.55 Acres

The following described land in the Village of Huntsville, McArthur Township, Logan County, Ohio and being in V.M.S. 9904

Beginning at an iron at the N.E. side of a large wood post at the N.E. corner of Roy Willoby 0.97 acre tract

thence S. 75 - 30 E. 303.0 feet to an iron in the west line of Robert P. Jenkins 3.18 acre tract

thence with the east line of said Jenkins land and also with the east line of Carl Hanson 0.40 acre tract S. 15 - 40 W. 437.3 feet to an iron at the N.E. corner of Charles Shirk's 0.48 acre tract

thence with the north line of said Shirk land N. 76 - 12 W. 101.7 feet to an iron

thence with the west side of said Shirk land S. 15 - 05 W. 11.1 feet to an iron at the N.E. corner of Lloyd Hughes present 0.45 acre tract

thence with the north side of said Hughes present 0.45 acre tract N. 76 - 12 W. 81.0 feet to an iron

thence with the east side of Lloyd Hughes 0.73 acre tract N. 15 - 18 E. 198.0 feet to a square wood post

thence with the north side of said Hughes 0.73 acre tract N. 75 - 23 W. 117.0 feet to a wood post at the S.E. corner of Elsie Jenkins 0.19 acre tract.

thence with the east side of said Jenking tract and also with the east side of the Roy Willoby 0.97 acre tract N. 15 - 17 E. 262.0 feet to the place of beginning the last described line passing the N.E. corner of the Elsie Jenkins land at 52.0 feet

the above described containing 2.55 acres and being out of the S.E. corner of Albert Smith's present 20.17 acre tract.

cc  
County Engineer

9.82  
110.0  
112  
774  
-----  
1968  
25.5  
-----  
17.13

20.17  
2.55  
-----  
17.62

*on Plat Book*

INDEXED ON MAP  
2560 4D2

Nagle Survey Feb. 1959

20.17 Acres in Huntsville and in V.M.S. 9904

4.43 Acres in McArthur Township ( Outside of Corporation ) in V.M.S. 9929

The following described land in the Village of Huntsville, McArthur Township Logan County Ohio and also in McArthur Township, Logan County Ohio.

Beginning at an iron at the N.W. corner of Lot Number 26 and in the east right of way line of the C.C.C. & St. L. R.R. thence with the said east right of way line N. 15 - 02 E. 288.00 feet, the last described line being fifty feet east of and parallel with the center of the north tract of said C.C.C. & StL. R.R. thence N. 75 - 12 W. 16.70 feet to a concrete post at the east right of way of said R.R. thence following the present fence at the east right of way of the C.C.C. & St. L. R.R. N. 14 - 55 E. 1194.40 feet to a wood post at the S.W. corner of Grant L. McCormick's 110.97 acre tract thence with the present fence at the south side of said McCormick land N. 80 - 06 E. 761.00 feet to a large concrete post at an interior corner of the McCormick land thence with the present fence at the west side of the McCormick land and also with the west line of Robert P. Jenkins land S. 15 - 40 W. 1943.50 feet to an iron at the N.E. corner of a 0.48 acre tract thence with the north side of said 0.48 acre tract N. 76 - 12 W. 101.70 feet to an iron thence S. 15 - 05 W. 11.10 feet to an iron at the N.E. corner of Lloyd R. Hughes 0.45 acre tract thence with the present fence at the north side of said 0.45 acre tract N. 76 - 12 W. 81.00 feet to an iron one foot north of a barn thence with the present fence at the <sup>EAST</sup> ~~north~~ side of Lloyd R. Hughes 0.73 acre tract N. 15 - 18 E. 198.00 feet to a square wood post thence with the present fence at the north side of said 0.73 acre tract N. 75 - 23 W. 117.00 feet to a wood post at the S.E. corner of Elsie Jenkins 0.19 acre tract thence with the <sup>east</sup> ~~north~~ side of said Jenkins tract and with the <sup>east</sup> ~~north~~

INDEXED ON LAP  
2566 6D3

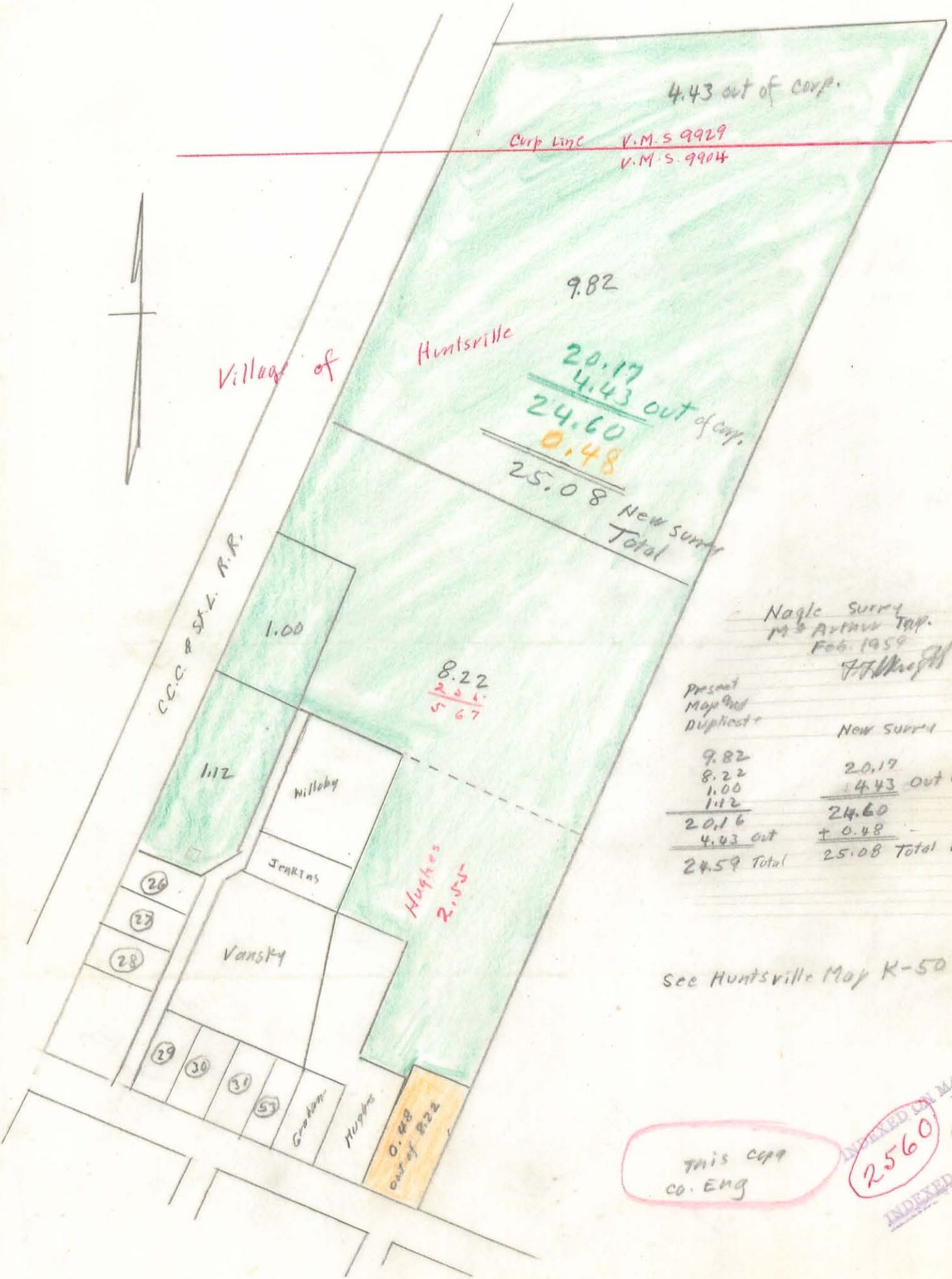
( Eagle Survey Continued )

( Sheet 2 of 2 sheets. )

side of Roy Willoby's 0.97 acre tract N. 15 - 17 E. 262.00 feet to a wood post the last described line passing a wood post at the N.E. corner of the Jenkins land at 52.00 feet thence with the present fence at the north ~~114/07/114/~~ side of said Willoby land N. 75 - 30 W. 188.50 feet to an iron the last described line passing at square wood post at the N.W. corner of the Willoby land at 172.00 feet thence with the west side of an alley 16.50 feet wide the following two courses and distances S. 14 - 20 W. 259.00 to an iron S. 54 - 10 W. 51.15 feet to an iron at the N.E. corner of Lot Number 26 thence with the north side of said Lot Number 26 N. 75 - 12 W. 132.00 feet to the place of beginning making a total of 24.66 acres 4.43 acres being in V.L.S. 9929 and outside of the Village of Huntsville 20.17 acres being in V.L.S. 9904 and in the Village of Huntsville

cc  
Logan County Engineer

INDEXED ON MAP  
2560 60-4



Corp Line V.M.S. 9929  
V.M.S. 9904

Village of

Huntsville

4.43 out of corp.

9.82

20.17  
4.43 out of corp.  
24.60  
0.48

25.08 New Survey  
Total

C.C.C. & S.V.L. R.R.

1.00

8.22  
2.25  
5.67

1.12

Willoby

Jenkins

Hughes  
R.V.S.

Vansky

26

27

28

29

30

31

32

Graham

Hughes

0.48  
out of 822

Nagle Survey  
M & Arthur Twp.  
Feb. 1959  
J.H. Knight

Present  
Map and  
Duplicate

New Survey

9.82  
8.22  
1.00  
1.12  
20.16  
4.43 out  
24.59 Total

20.17  
4.43 out of corp.  
24.60  
+ 0.48  
25.08 Total New Survey

See Huntsville Map K-50

This copy  
CO. ENG

INDEXED ON MAP  
2560  
INDEXED ON MAP  
6P

Smith Survey  
Large Tract

February 18, 1977

The following described real estate situated in the Village of Huntsville, Township of McArthur, County of Logan, State of Ohio and being a part of Virginia Military Surveys No.'s 9904 and 9929 and being more particularly described as follows:

Beginning at an iron at the N. W. corner to Lot No. 26 and in the East right of way line of the C. C. C. & St. L. RR. (Penn Central);

Thence with the said East right of way line, N.  $15^{\circ} 02'$  E. 283.00 feet to a point, the last described line being Fifty feet east of and parallel with the centerline of the said C. C. C. & St. L. RR., said point being the true place of beginning for this survey;

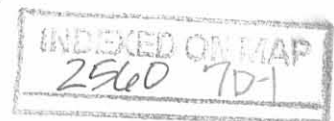
Thence N.  $75^{\circ} 12'$  W. 16.70 feet to a concrete post at the East right of way fence of the C. C. C. & St. L. RR.;

Thence following the present East right of way fence of the C. C. C. & St. L. RR., N.  $14^{\circ} 55'$  E. 1,194.40 feet to a wood corner post at a S. W. corner to Clifford E. Campbell's present 96.17 Acre tract (formerly Grant L. McCormick's 110.97 Acre tract);

Thence with the present fence at the south side of said Campbell's land, N.  $80^{\circ} 06'$  E. 761.00 feet to a large concrete post at an interior corner of the Campbell land;

Thence with the present fence at the West side of the Campbell land and also with the West line of Robert P. Jenkin's land, S.  $15^{\circ} 40'$  W. 1,506.20 feet to an iron at the N. E. corner to Ralph E. Hughes's present 2.55 Acre tract;

Thence with the north line of R. E. Hughes's 2.55 Acre tract and Roy Willoby's present 0.97 Acre tract and the north line of a 16.50 foot alley, N.  $75^{\circ} 30'$  W. 491.50 feet to an iron at the N. W. corner to the said 16.50 foot alley, passing through an iron at the N. E. side of a large wood post at the N. W. corner to Hughes's 2.55 Acre tract and the N. E. corner to Willoby's 0.97 Acre tract at 303.00 feet and passing through a wood post at Willoby's N. W. corner at 475.00 feet;



(2)

Thence N.  $76^{\circ} 47.85'$  W. 135.57 feet to the place of beginning, -containing 920,814.34 square feet or 21.139 Acres, more or less, of which 16.709 Acres are in V. M. S. No. 9904 in the Village of Huntsville and 4.43 Acres are in V. M. S. No. 9929 in the Township of McArthur.

I hereby certify that this is a true and accurate description of said tract as prepared by me on February 18, 1977.

*Daniel E. Gilbert*  
Daniel E. Gilbert, P.S.  
Reg. Sur. No. 5402  
1041 N. Main St.  
Bellefontaine, Ohio 43311

INDEXED ON MAP  
2560 7D-2



Smith Survey  
Small Tract

February 18, 1977

The following described real estate situated in the Village of Huntsville, Township of McArthur, County of Logan, State of Ohio and being a part of Virginia Military Survey No. 9904 and being more particularly described as follows:

Beginning at an iron at the N. W. corner to Lot No. 26 and in the East right of way line of the C. C. C. & St. L. RR. (Penn Central);

Thence with the said East right of way line, N.  $15^{\circ} 02'$  E. 288.00 feet to a point. the last described line being Fifty feet east of and parallel with the center-line of the said C. C. C. & St. L. RR.;

Thence S.  $76^{\circ} 47.85'$  E. 135.57 feet to an iron at the N. W. corner to a 16.50 foot alley, said iron being N.  $75^{\circ} 30'$  W. 16.50 feet from a wood post at the N. W. corner to Roy Willoby's present 0.97 Acre tract;

Thence with the west side of said 16.50 foot alley, the following two courses and distances, S.  $14^{\circ} 20'$  W. 259.00 feet to an iron and S.  $54^{\circ} 10'$  W. 51.15 feet to an iron at the N. E. corner to Lot No. 26;

Thence with the North side of said Lot No. 26, N.  $75^{\circ} 12'$  W. 132.00 feet to the place of beginning, containing 39,686.36 square feet or 0.911 Acres, more or less.

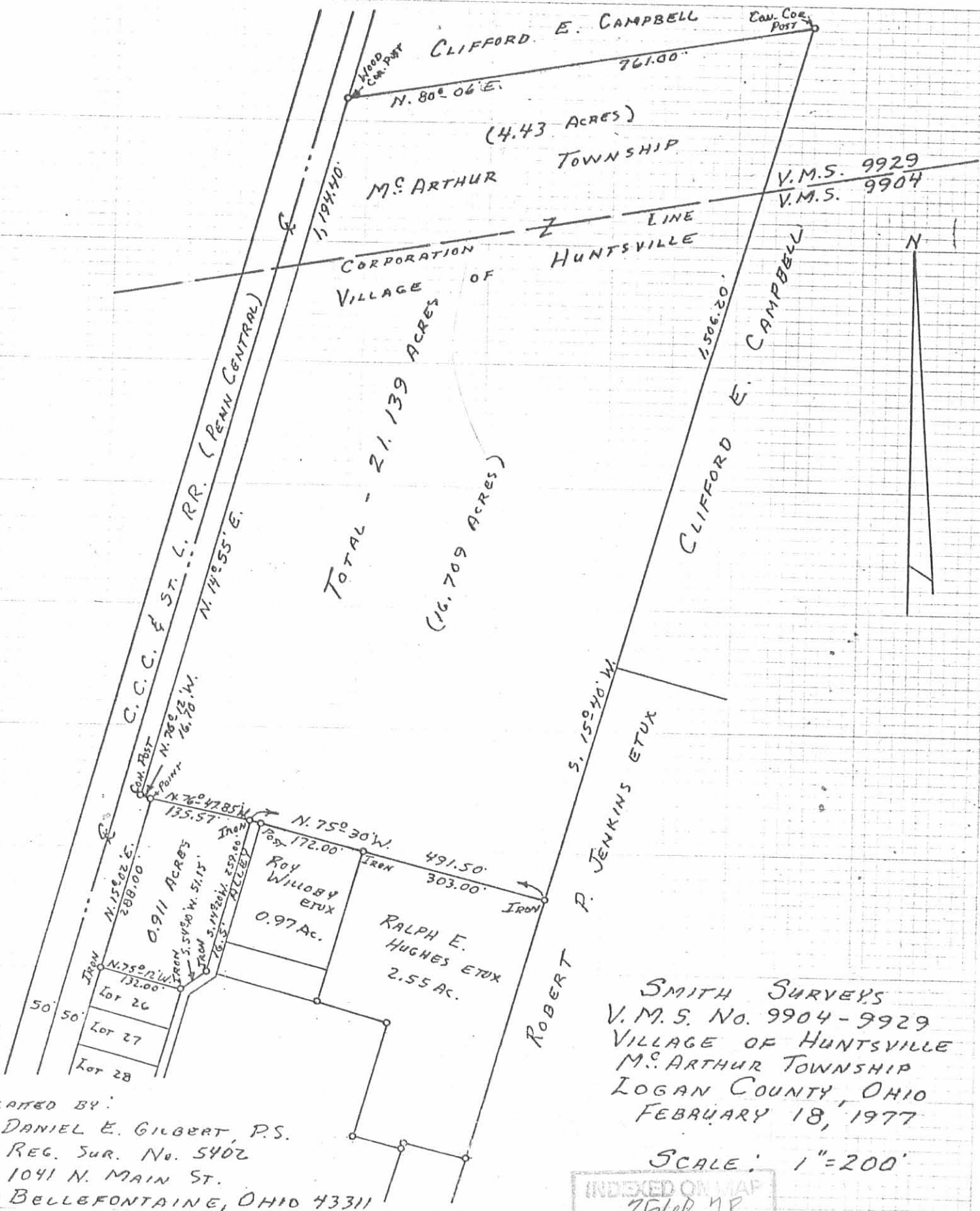
The above being surveyed out of a 17.62 Acre tract in the name of Hazel E. Smith.

I hereby certify that this is a true and accurate description of said tract as prepared by me on February 18, 1977.

*Daniel E. Gilbert*

Daniel E. Gilbert, P.S.  
Reg. Sur. No. 5402  
1041 N. Main St.  
Bellefontaine, Ohio 43311





PLATTED BY:  
 DANIEL E. GILBERT, P.S.  
 REG. SUR. NO. 5402  
 1041 N. MAIN ST.  
 BELLEFONTAINE, OHIO 43311

SMITH SURVEYS  
 V.M.S. NO. 9904-9929  
 VILLAGE OF HUNTSVILLE  
 M. ARTHUR TOWNSHIP  
 LOGAN COUNTY, OHIO  
 FEBRUARY 18, 1977

SCALE: 1" = 200'

INDEXED ON MAP  
 2560 7P

11-14-12

Land Surveys • Topography • Subdivisions • Construction Layout

117 N. Madriver St.  
Bellefontaine OH 43311



Phone: (937) 593-7335  
Fax: (937) 593-7444  
surveys@lsmcinc.us

**ROLLINS  
0.502 ACRE**

Lying in Virginia Military Survey 9904, Village of Huntsville, McArthur Township, Logan County, Ohio.

Being out of the Melissa M. Rollins and Roger D. Rollins 3.073 acre tract and Lot No. 53 of Hover Addition No. 2 (Plat Cabinet A, Slide 159) as deeded and described in Official Record 355, Page 176, Tract I and Tract II of the Logan County Records of Deeds and being more particularly described as follows:

Beginning on a 5/8 inch iron rod set on the southeast corner of Lot 31 of Hover Addition (Plat Cabinet A, Slide 159) on the north right-of-way of Napoleon Street.

THENCE, with the east lines of Lot 31, a 16.5 feet wide alley and the Robert E. Major 0.59 acre tract (O.R. 256, Pg. 899), N 17°-28'-19"E, a distance of 387.85 feet to a 5/8 inch iron rod set.

THENCE, with the east lines of the Kevin L. Fitzpatrick 0.19 acre tract (O.R. 72, Pg. 37) and the Melissa Marie Rollins 0.97 acre tract (O.R. 755, Pg. 122), N 17°-58'-16"E, a distance of 262.00 feet to a 5/8 inch iron rod set.

THENCE, with the south line of the Roger Dean Rollins and Melissa Marie Rollins 21.139 acre tract (O.R. 274, Pg. 755), S 70°-53'-29"E, a distance of 33.01 feet to a 5/8 inch iron rod set.

THENCE, S 17°-40'-23"W, a distance of 649.35 feet to a 5/8 inch iron rod set on the north right-of-way of Napoleon Street.

THENCE, with the north right-of-way of Napoleon Street (60 feet wide), N 71°-44'-53"W, a distance of 33.00 feet to the point of beginning.

Containing 0.502 acre.

Property is subject to any and all previous easements and rights-of-way of record.

The basis for bearings is the center-line of Napoleon Street, being N 71°-44'-53"W, and all other bearings are from angles and distances measured in a field survey by Lee Surveying and Mapping Co., Inc. on November 2, 2012.

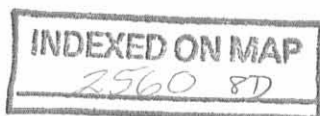


ORIGINAL STAMP IN GREEN

Description prepared by:

William K. Bruce  
Professional Surveyor 7437  
November 6, 2012

3221012



2 WORKING DAYS  
**BEFORE YOU DIG**  
CALL TOLL FREE **800-362-2764**  
OHIO UTILITIES PROTECTION SERVICE

ROGER DEAN ROLLINS AND  
MELISSA MARIE ROLLINS  
21.139 ACRES  
O.R. 274, PG. 755

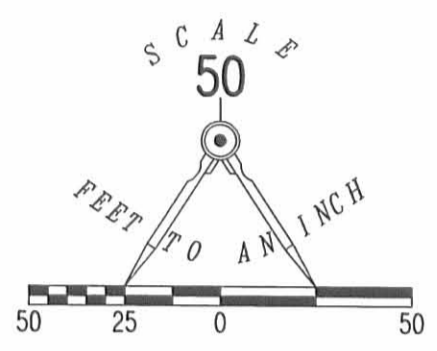
MELISSA MARIE ROLLINS  
0.97 ACRE  
O.R. 755, PG. 122

KEVIN L. FITZPATRICK  
0.19 ACRE  
O.R. 72, PG. 37

ROBERT E. MAJOR  
0.59 ACRE  
O.R. 256, PG. 899

MELISSA M. ROLLINS AND  
ROGER D. ROLLINS  
3.073 ACRES  
O.R. 355, PG. 176  
TRACT I

**SURVEY OF 0.502 ACRE OUT OF THE  
MELISSA M. ROLLINS AND  
ROGER D. ROLLINS  
3.073 ACRE TRACT  
AND LOT NO. 53  
HOVER ADDITION NO. 2  
PLAT CABINET A, SLIDE 159  
OFFICIAL RECORD 355, PAGE 176  
TRACT I AND TRACT II  
VIRGINIA MILITARY SURVEY 9904  
VILLAGE OF HUNTSVILLE  
McARTHUR TOWNSHIP  
LOGAN COUNTY, OHIO**



LEGEND:

- ⊙ 3/4 INCH IRON PIPE FOUND
- ⊗ RAILROAD SPIKE FOUND
- 5/8 INCH IRON ROD FOUND
- 5/8 INCH IRON ROD SET WITH PLASTIC I.D. CAP STAMPED "LSM 7437"



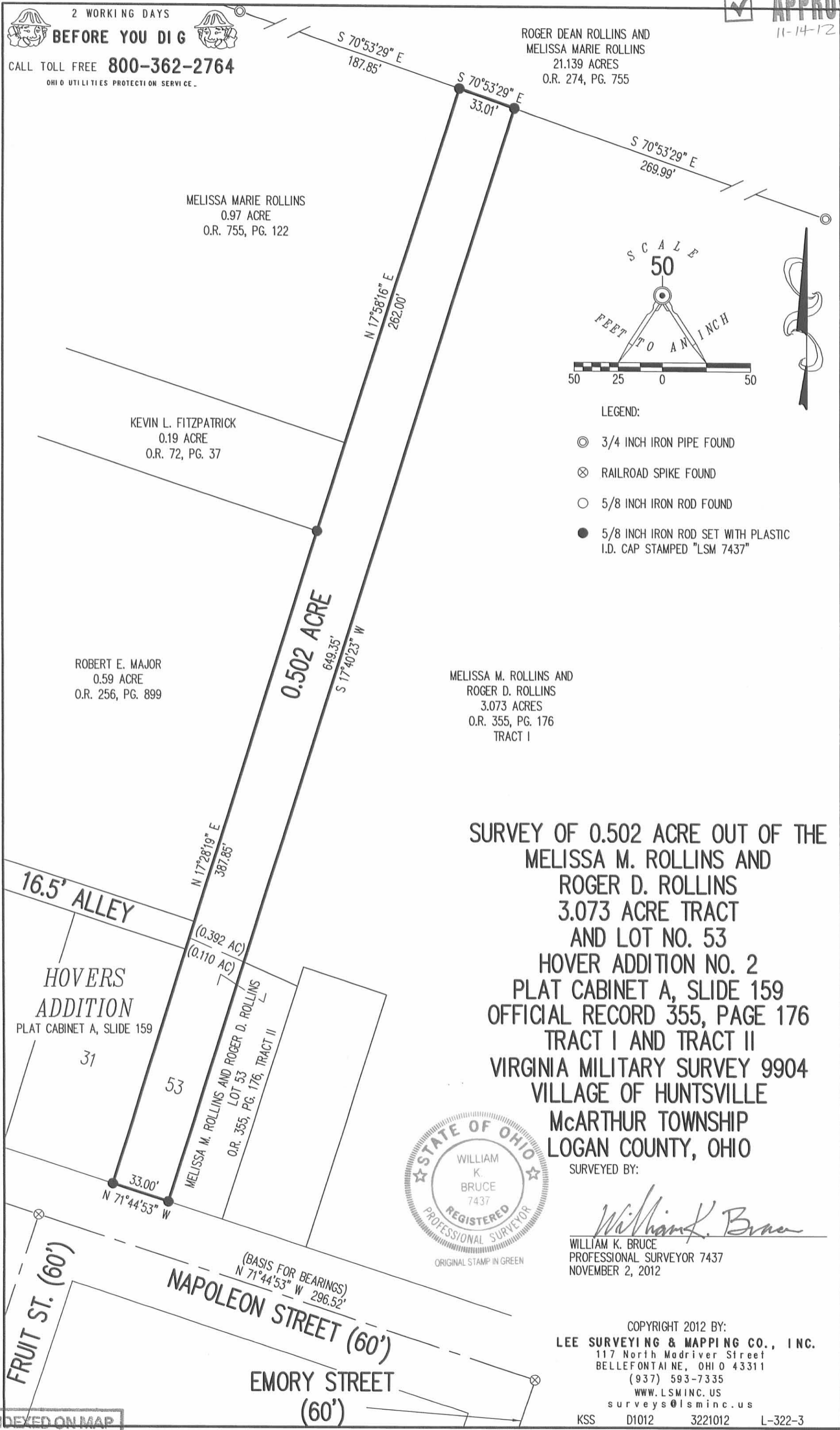
SURVEYED BY:

*William K. Bruce*

WILLIAM K. BRUCE  
PROFESSIONAL SURVEYOR 7437  
NOVEMBER 2, 2012

COPYRIGHT 2012 BY:  
**LEE SURVEYING & MAPPING CO., INC.**  
117 North Madriver Street  
BELLEFONTAINE, OHIO 43311  
(937) 593-7335  
WWW.LSMINC.US  
surveys@lsminc.us

KSS D1012 3221012 L-322-3



INDEXED ON MAP  
2560 8P