

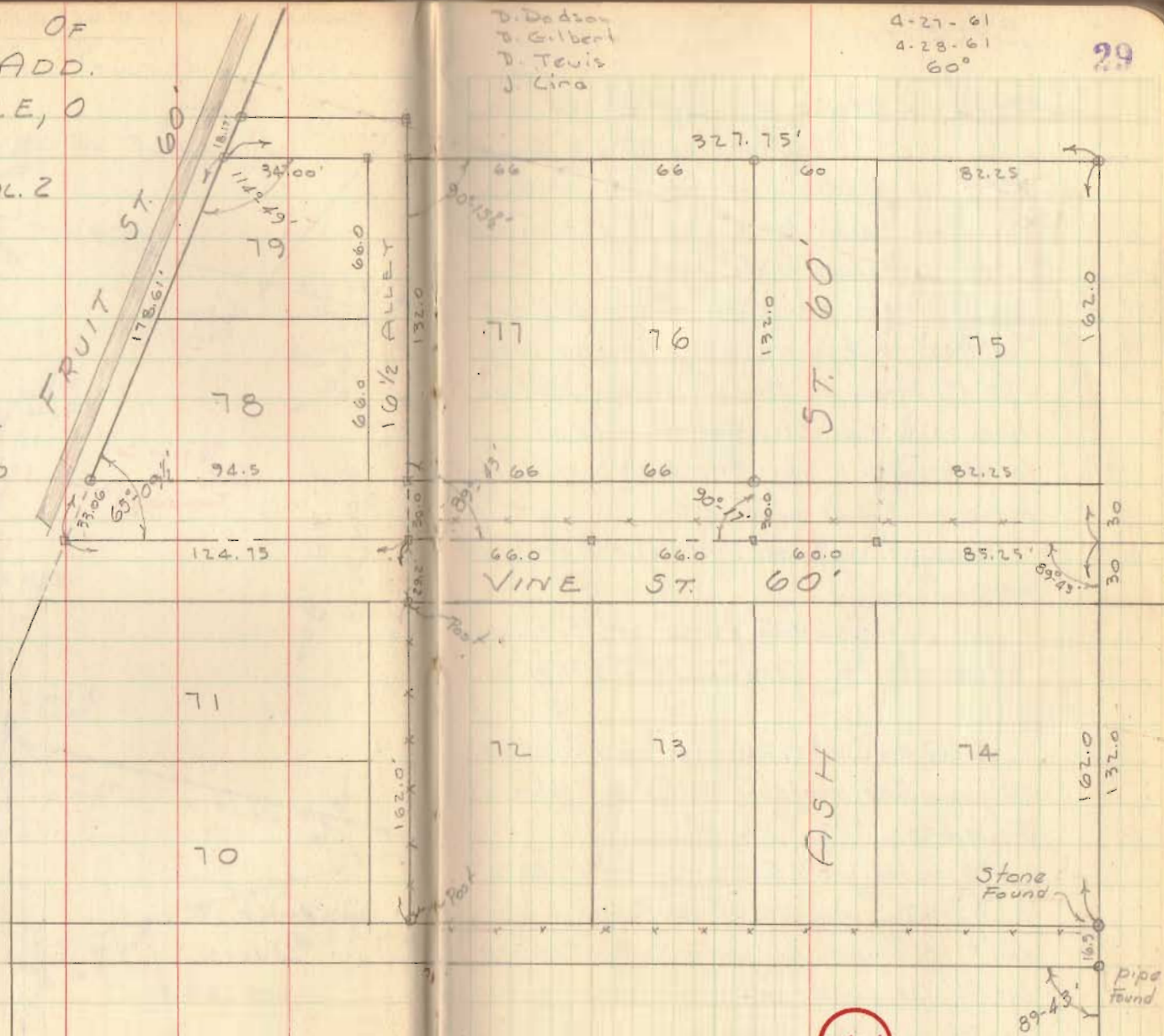
RESURVEY OF
BICKHAM ADD.
HUNTSVILLE, O

FB 702

PLAT Bk. B Vol. 2
Pg. 53

□ = Hkd. Hubs set
○ = 3/4" Pipe set

AREA NORTH OF
GR. LINE Pg. 30
TO LOGAN Co.
SHRINE CLUB -



3461

FB 702

BICKHAM ADD CONT'D.

Began @ stone S.E. cor. lot 74.

- found pipes @ S.E. cor. lot 155 & S.E. cor. Ralph Carter lot - produced this line North for E. line Bickham Add. (Used 10' offset to the West)

Meas. from stone N. 162.0 feet, set Hhd. Hub for E VINE ST. - Turned angle (89°-43') shown on Manteth Allot. - used this line as E Vine St. - set hhd. Hubs at lot distances - this line 3.5' S. of Existing fence on N. side of VINE ST.

Meas. N. on offset line 162.0' & set 3/4" pipe @ N.E. cor. lot 75

Set on hhd Hub, & @ S.W. cor lot #77 - turned 89°-43' meas. N. 162.0'; set hhd Hub - N.W. cor #77

Set @ N.W. cor. #77 - backsight pipe @ N.E. cor #75, produced line West 50.50'; set 3/4" pipe for N.W. cor. #79

Set on hhd hub, & @ S.W. cor. lot #78, turned L 65°-0 1/2' - meas. 33.06 set 3/4" pipe for S.W. cor. #78 - meas. from pipe @ N.W. cor. #79. 18.17' Set 3/4" pipe for N. line of 16 1/2' alley

Set on hhd hub - & @ S.E. cor. #76, turned 90°-17' meas. 30.0 feet set 3/4" pipe for S.E. cor #76, meas. 132.0 set 3/4" pipe for N.E. cor. #76

