

Jefferson Twp. Survey 3683

Survey for Wm Falk

~~85~~

measured 9 ch on East side

set 4' offset

(575)

at South end turned  $87^{\circ}16'$  obtuse

2.80 ch

turned  $90.44$  to cement Rd 686

turned  $127.04$   $3.50$

turned  $52^{\circ}54'$

set south end  $41.7$  ch to West

and North end  $51.4$  to make 2.5 Acres

all measurements in chains

$$\begin{array}{r} 1253 \\ 41 \\ \hline 1253 \\ 5012 \\ \hline 51373 \end{array}$$

(see Road survey Book 555 Page 26)

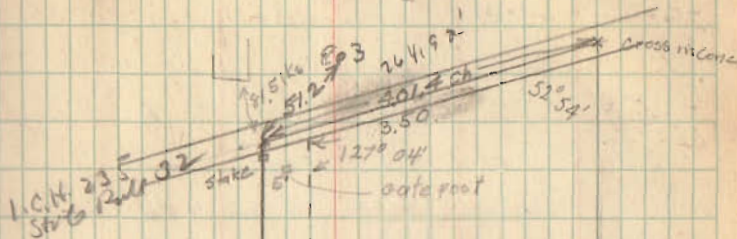
Wm Montgomery

Wm Smucker

Weather cold & windy.

Jan 29 1926

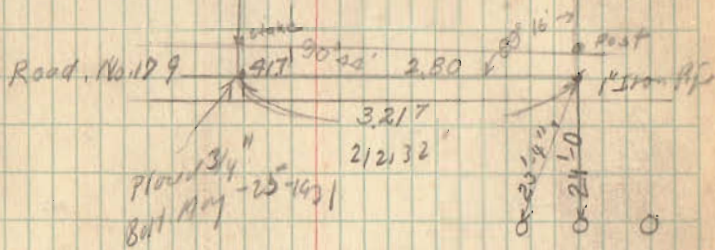
Weather



6.55  
432.30

686 cement Rd

594.00  
4000



Plowed 3/4"  
8th May - 25-1931

15" soyans  
Witnessed  
May - 25-1931