

Line A

Robt McLaughlin Sec Dec 9 1/2
 Course pike or line to N 1/2 E - N 83 1/2 E
 Beg at hick tree at 3 1/2 John Easton
 Only as established N 83 1/4 E
 Set South 15 links
 4-4-25.

More North 34 links & east 3 lks
 Variation 24 links length 89.1 poles
 Wit < end line a = Elm 36" S 82 1/2 W 40 lks
 also Maple = S 14 1/2 E 29 1/2 lks
 True course & dist line A = N 83 1/4 E 89.1

Line B start at above < T
 Start west 15 links from T.
 S 7 1/2 W
 pass < to Joel & Wilson Easton at.
 3-2-17 = 64.68
 Strike ^{15 lks west of} at 113.90 = 5-0-77 1/2
 True course & dist line B = S 7 1/2 W 113.9

Line C

Approx cor = S 82 3/4 W
 Ok use S 82 3/4 W = 4-4-27 1/2 = 89.1
 Set stake in east fence post

True course & dist line C = S 82 3/4 W 89.1 poles

Line D = Start at T 1 E
 N 7 1/2 W
 Set stake for < at 2-4-30 1/2
 49.22

Strike hick < at 5-7-24 = 114.76

True course & dist line D = N 7 1/2 W 114.7 poles

A-shul. Hick 14" di. corner trees;

B= stake + elm 36" S 82 1/2 W 40 links also
Maple 18" S 18 1/2 E 29 1/2 links

C= post + < Joel + Wally Easton.

d= stake in old fence row.

e= stake in fence row. f= stake in field

g= post in cent Bell + Jerusalem Pike

h " " " " " "

i= stake S 68 23 poles from h

j= " S 68 38.2 poles from h or 15.2 from i

ja= S 49 1/2 E 30.7 poles

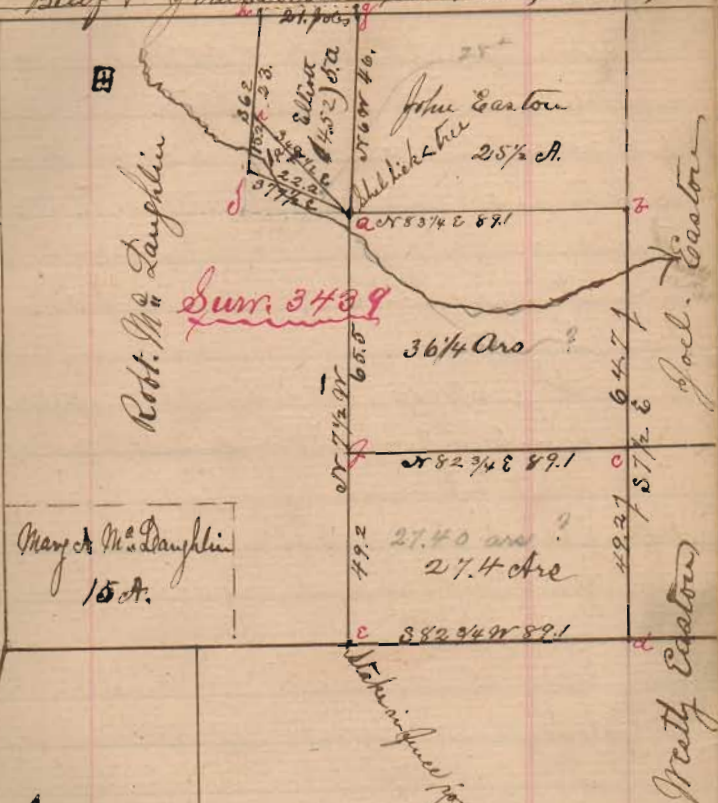
jb= ja= S 77 1/2 E 22.2

jc= jh= S 83 W 21. poles

677
INDEXED ON MAP

Jeffers or Turp.

Bell + Jerusalem Pike, N 83 E



Surveyed as above for
Robt. M. Laughlin Dec 9th 81