

Road #135

16 Metat.  
staked to  
60' R of way

Jefferson Twp.

Hubs 20' from  $\frac{1}{2}$

1354  
INDEXED ON MAP

Sept. 14 - 1918  
East of road  
Wingert  
McJannet  
Antler  
Wickerson

61

8+00

1-Story Frame

7+60 Lane

TO Barn

11.9  
1+00

\*  
\*  
\*  
\*

Road # 8

Road # 135

9-14-29

62

12+00  $\Delta$  1<sup>0</sup>-0" left

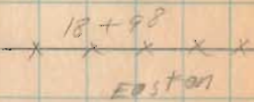
1354  
INDEXED ON MAP

$\leftarrow$  20.0  $\times$  0 8+5<sup>0</sup>  
8" Walnut

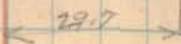
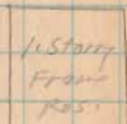
Road # 135



Rogers



18+37



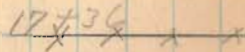
18+11

Jack Vanaco



Smith

Easton



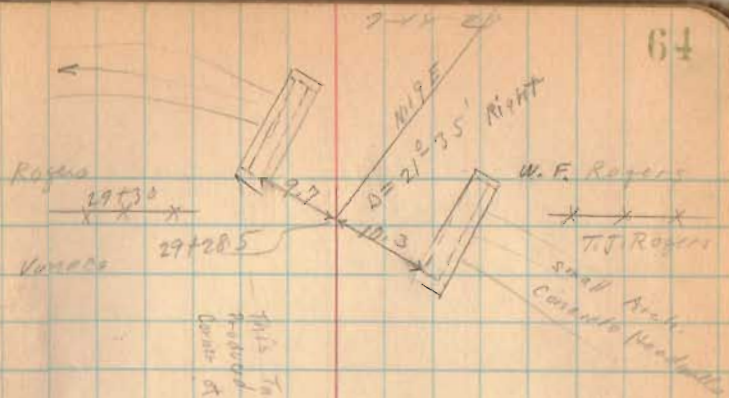
Smith

1354

INDEXED ON MAP

Road #135

64



Rogers

29+30

Vamaca

29+28.5

This Tangent  
Roaded with  
doors at end

36'  
29' 1/2'  
1/2' 1/2'

1 1/2 story  
Frame

25+00

24+30 Lane To Vamaca

23+00 2.58' To Right

1354  
INDEXED ON MAP

24+30 Lane To Vamaca

N. 2 W.

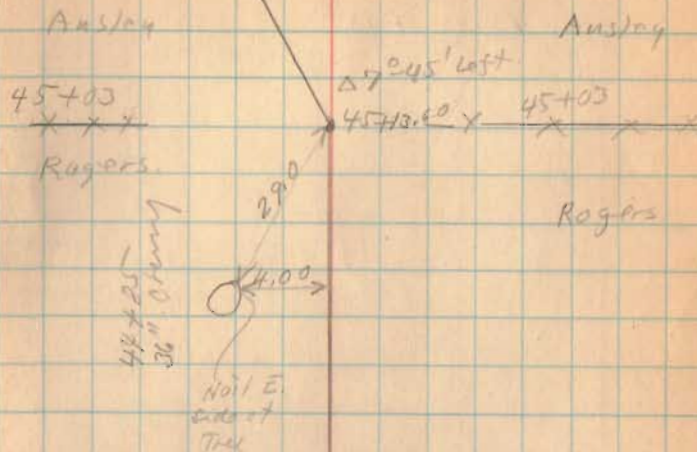
Road # 135

3369.50  
2928.50  
441.00

1354  
INDEXED ON MAP

9-14-29

65



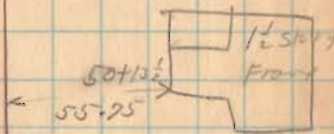
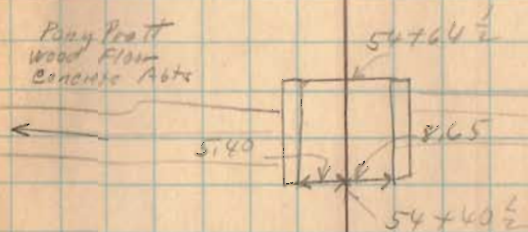
Road #135

Sept 16-1919

66

Wright  
McClintock  
Austin  
McKenham

Pony Post  
Wood Floor  
Concrete Abts



1354  
INDEXED ON MAP

Road #135

9-16-79

67

Spike

32.9

18" Sugar  
66+50

2° ± 0' Left  
66+50

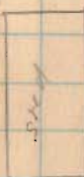
1/2 story

Frame

60.9

66+75

65+15



E.M. Collins

60+63 1/2  
X X X X

Ansley

E.M. Collins

60+63 1/2  
X X X X

Ansley

60+54 Left  
6° 0'

1354  
INDEXED ON MAP

ROAD # 135

9-16-29

68

50 ft.  
74+30  
To Bellefontaine ←  
74+10 →  
To West Mansfield →  
L.C.H. 22  
State Route 68

North

1354  
INDEXED ON MAP