

FB 712

T.R. 55
Jefferson Twp.
Logan Co., Ohio

14+76.65 - P.I. - Set $\frac{5}{8}$ " ϕ
capped rebar replacing a
mag nail set here in 1998 -
shown as Sta. 14+78 in
F.B.K. # 555, pg. 43. -
Installed monument box.
0°-10'-00" Rt.

9+80.00 - P.O.T. - Set R.R.
Spike

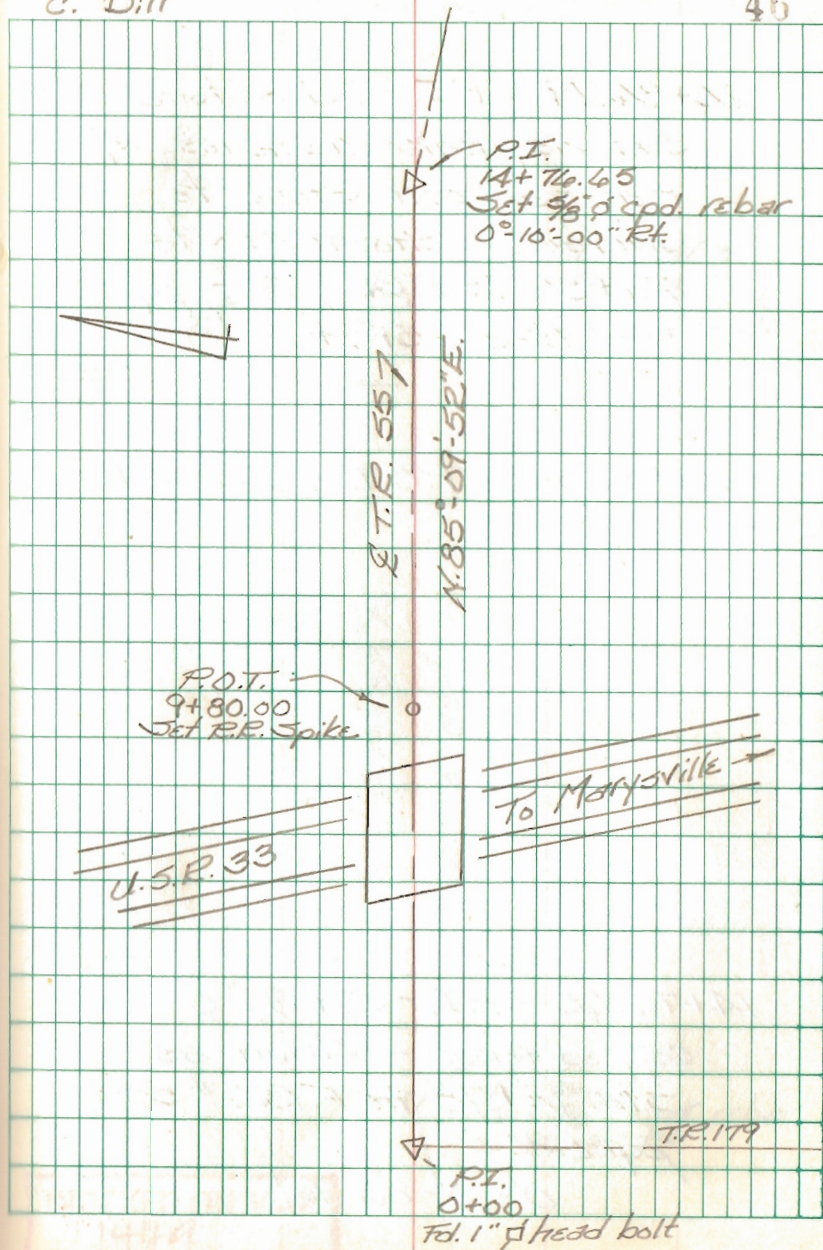
0+00 - P.I. - Fd. 1" ϕ head
bolt - 24" long \approx 14" deep

INDEXED ON MAP
1449

B. Simmons
G. Dappert
C. Dill

June 08

46



FB 712

T.R. 65
 Jefferson Twp.
 Logan Co., Ohio

26+84.79 - P.I. - Fd. Stone -

Set mag nail straddles w/
 mag nail over stone to
 surface - Shown as Sta.

26+86 in F.B.K. # 555, pg. 43.

0°-28'-51" Lt.

24+00.00 - P.O.T. - Set R.R.

Spike

14+74.65 - P.I. - Set 5/8" ϕ

capped rebar - Shown as

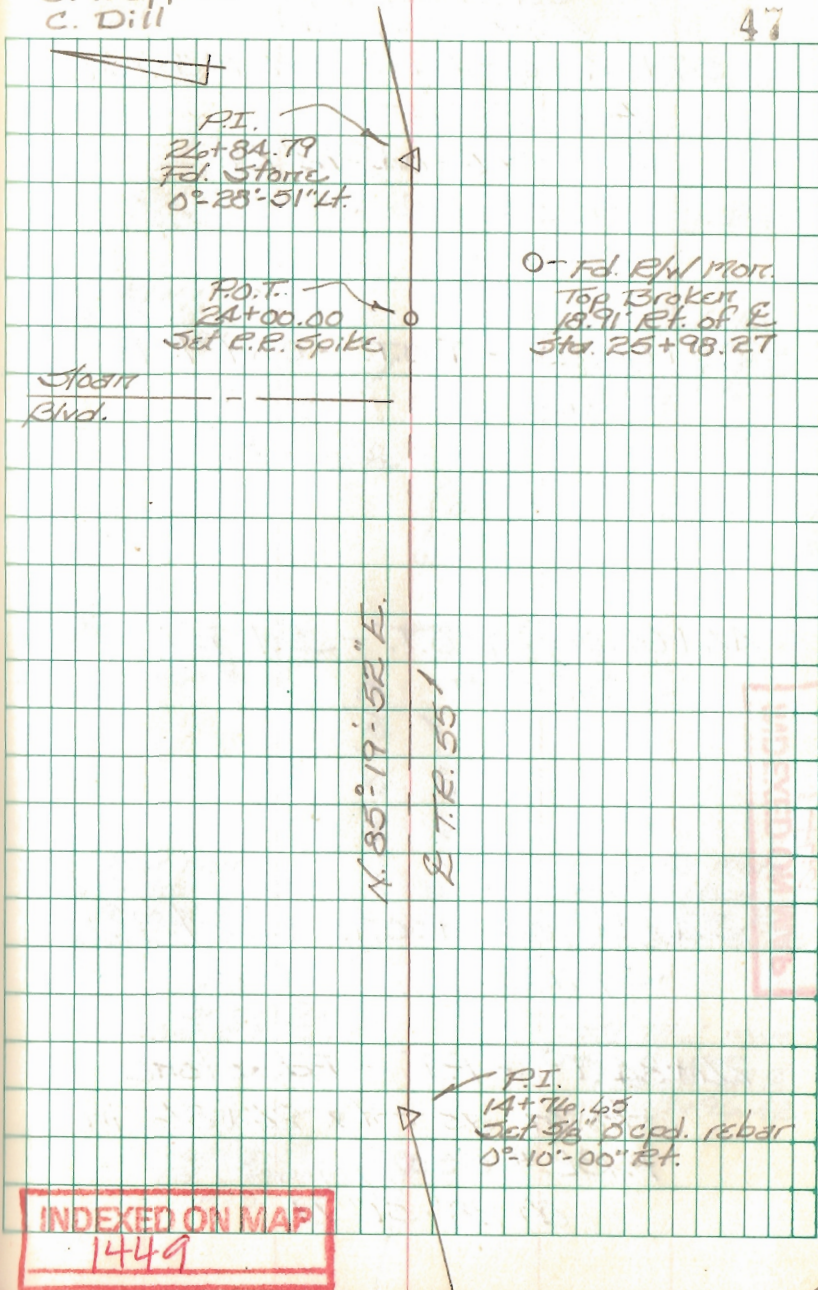
Sta. 14+78 in F.B.K. # 555,
 pg. 43.

0°-10'-00" Rt.

B. Simmons
 G. Dappert
 C. Dill

JUNE 08

47



FB 712

T.R. 55
Jefferson Twp.
Logan Co., Ohio

57+24.28 - P.I. - Set 1" ϕ iron
bar

96°-04'-12" Rt.

54+00.00 - P.O.T. - Set R.R.
Spike

44+00.00 - P.O.T. - Set R.R.
Spike

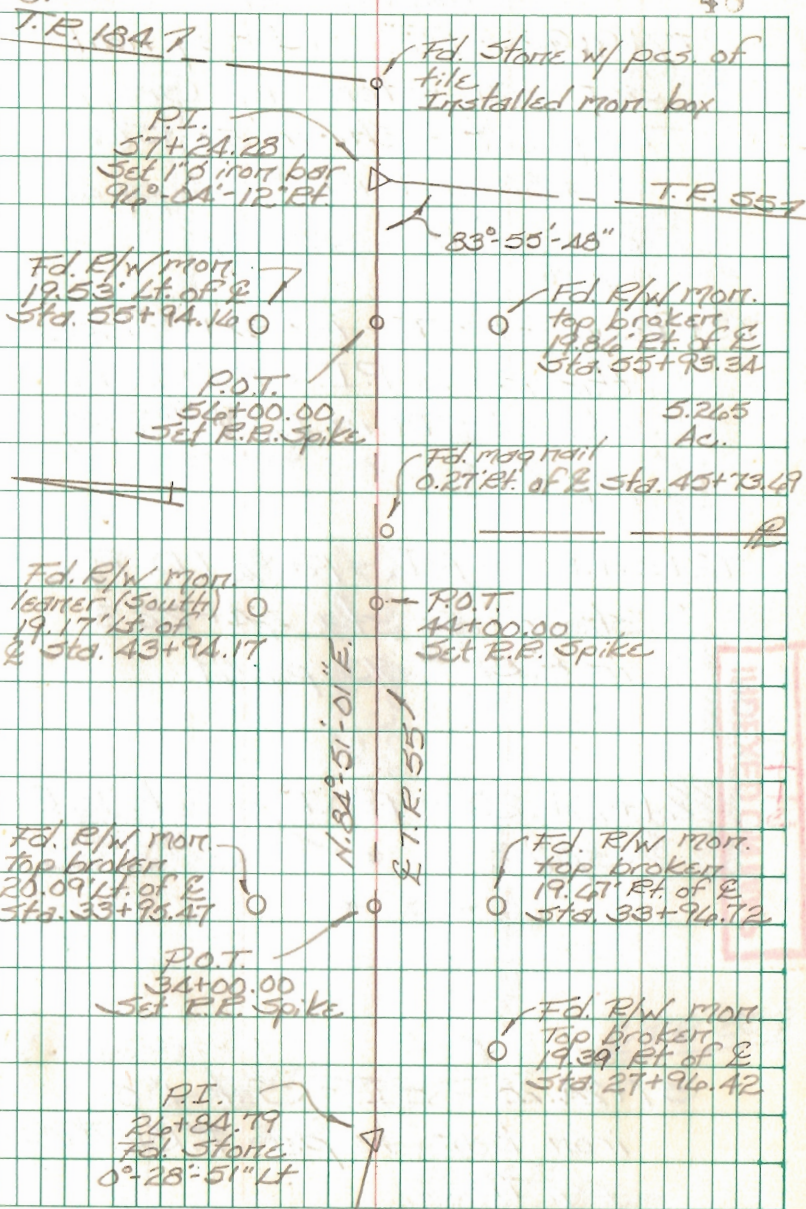
34+00.00 - P.O.T. - Set R.R.
Spike

26+84.79 - P.I. - Fd. stone -
shown as Sta. 26+86 in
F.B.K. # 555, pg. 43
0°-28'-51" Lt.

B. Simmons
G. Dappert
C. Dill

June 08

48



INDEXED ON MAP
17449

INDEXED ON MAP
17449

FB 712

T.R. 55
 Jefferson Twp.
 Logan Co., Ohio

77+91.92 - P.I. - Fd. mag nail
 set over stone by Gregg
 Dappert - shown as Sta.
 58+83 in F.Bk. # 513, pg. 68 -
 end of this survey.

72+98.06 - P.O.T. - Fd. $\frac{3}{4}$ " I.D. Pipe -
 this is old P.I. shown as
 Sta. 63+79 in F.Bk. # 513,
 pg. 69.

72+54.83 - P.I. - Fd. $\frac{3}{4}$ " I.D. Pipe -
 shown as Sta. 44+22.3
 in F.Bk. # 513, pg. 69

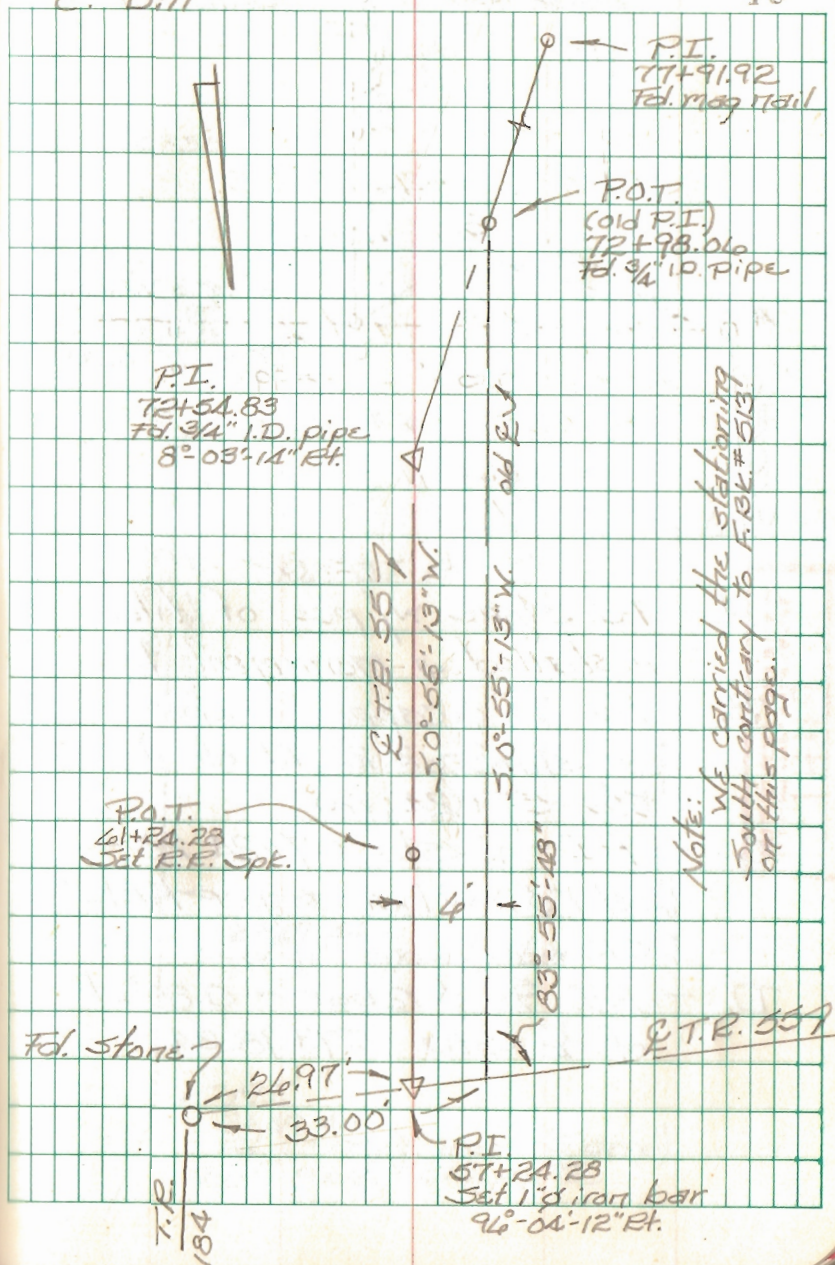
61+24.28 - P.O.T. - Set R.R.
 spike

57+24.28 - P.I. - Set 1" ϕ
 iron bar as per F.Bk. # 513,
 pg. 71
 $96^{\circ}-04'-12"$ Rt.

B. Simmons
 G. Dappert
 C. Dill

June 08

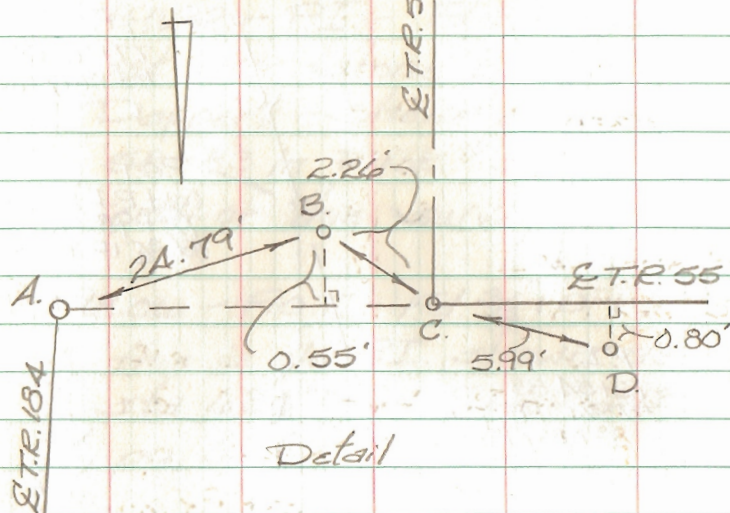
49



INDEXED ON MAP
449

FB 712

Intersection T.R. 55 w/ T.R. 184
 Jefferson Twp.
 Logan Co. Ohio

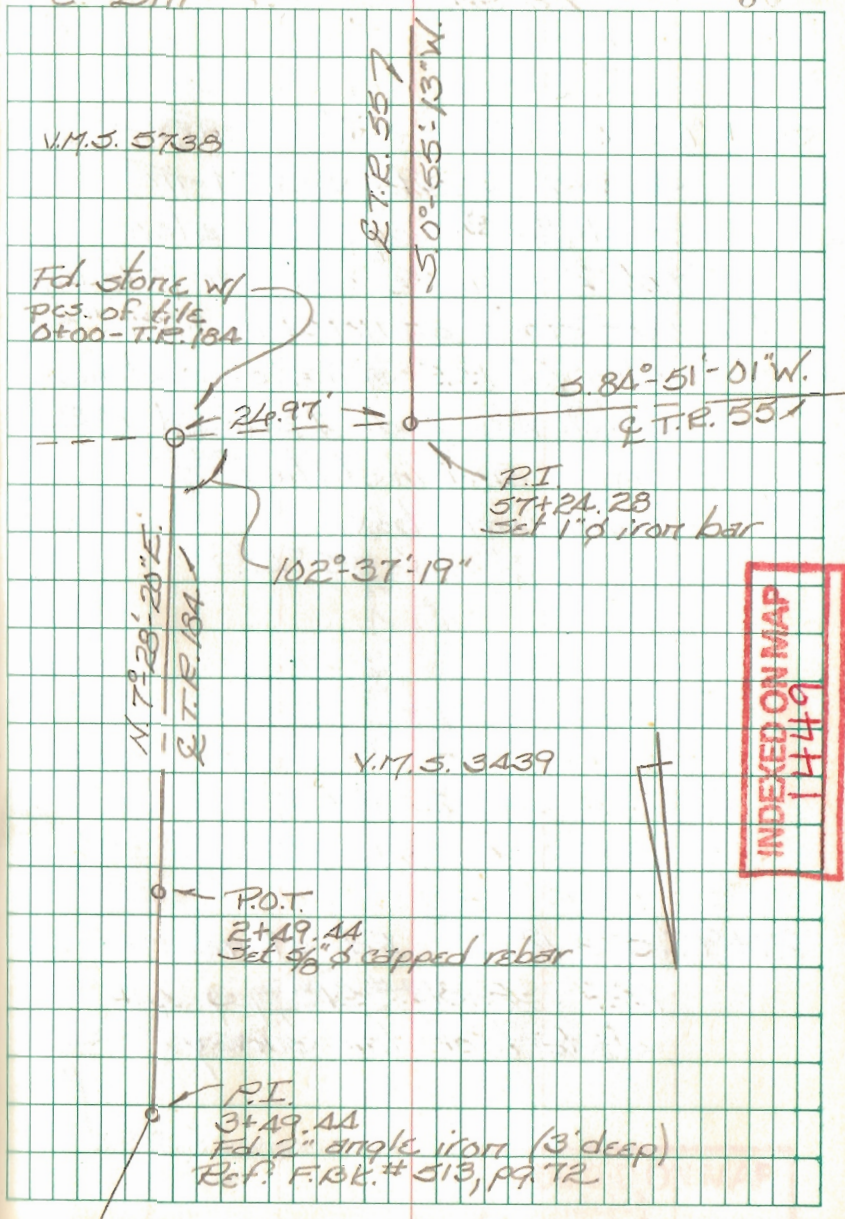


- A. - Fd. stone w/ pcs. of tile - installed a monument box
- B. - Fd. $\frac{5}{8}$ " ϕ capped rebar "Geeslin" - 2.23' Lt. of \mathcal{E} Sta. 57+24.60
- C. - P.I. - \mathcal{E} Sta. 57+24.28 - set 1" ϕ iron bar as per F.R.K. # 513
- D. - Fd. $\frac{5}{8}$ " ϕ rebar - 0.80' Lt. of \mathcal{E} Sta. 57+18.34

B. Simmons
 G. Deppert
 C. Dill

June 08

50



FB 712

T.R. 55
Jefferson Twp.
Logan Co., Ohio

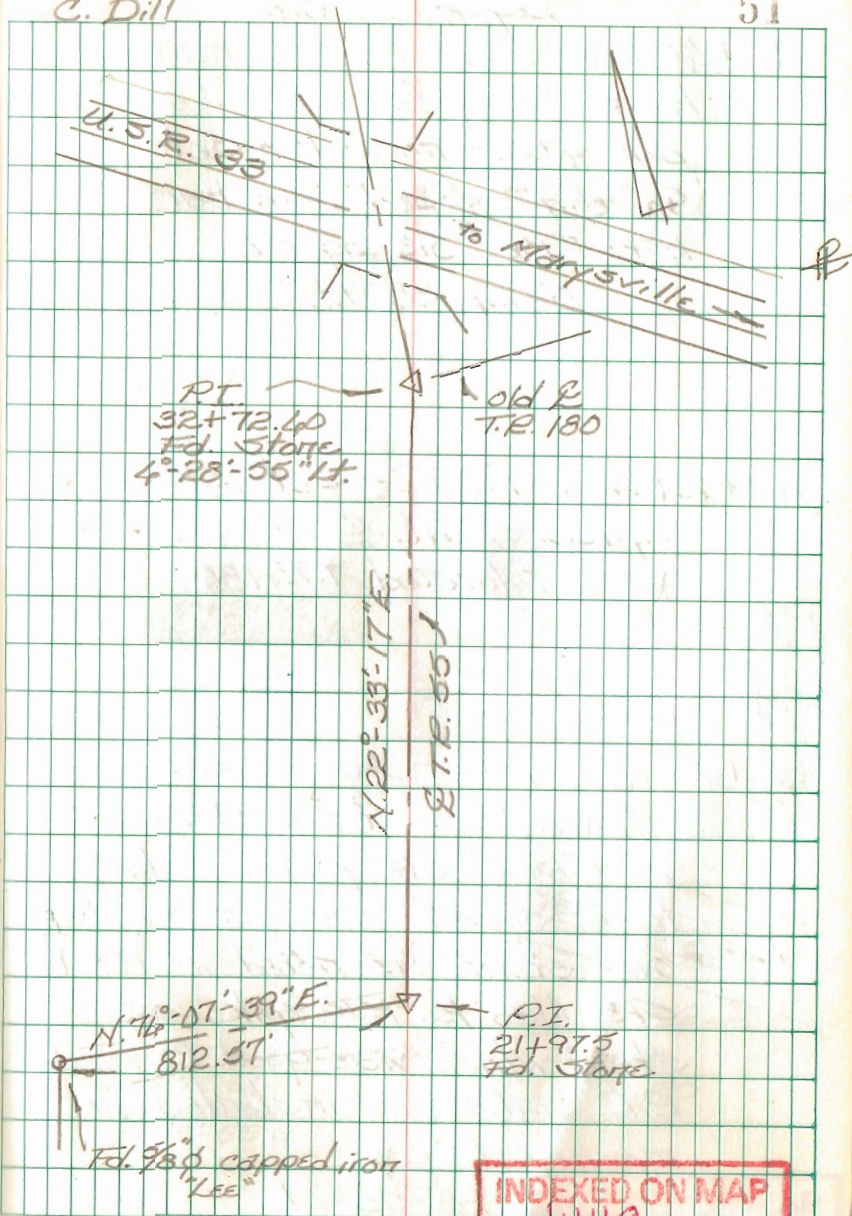
32+72.40 - P.I. - Fd. Stone -
shown as Sta. 32+74 in
F.Bk. # 513, pg. 44 - also
fd. 2" square iron bar (≈ 4" deep)
over stone as noted in F.Bk. # 513.
Also fd. R.R. spike over stone
which was good. Removed R.R.
spike and installed a
monument box.
4°-28'-55" Lt.

21+97.5 - P.I. - Fd. stone -
Ref: F.Bk. # 513, pg. 44.
Start of this survey.

B. Simmons
G. Dappert
C. Dill

March 2010

51



INDEXED ON MAP

449

FB 712

T.R. 55
Jefferson Twp.
Logan Co., Ohio

45+40.36 - P.I. - Fd. PK nail
here - Dug for I. Pipe as
per notes - no luck - Set
5/8" dia. capped iron bar.
Ref: F.B.K. # 513, pg. 47.
0°-27'-38" Lt.

40+29.02 - P.O.T. - Set R.R.
spike - Int. & T.R. 55
w/ & relocated T.R. 180

32+72.60 - P.I. - Fd. stone -
shown as Sta. 32+7A
in F.B.K. # 513, pg. 466 - also
fd. 2" square iron bar (≈ 4" deep)
over stone as noted in F.B.K. #
513. Also fd. R.R. spike over
stone which was good. Removed
R.R. spike and installed a
monument box.
4°-28'-55" Lt.

B. Simmons
G. Dappert
C. Dill

March 2010

52



INDEXED ON MAP
1449

FB 712

T.R. 55
Jefferson Twp.
Logan Co., Ohio

58+80.04 - P.I. - Fd. mag. nail
set over stone by G. Dappert -
shown as Sta. 58+83 in
F.R.K. # 513, pg. 48 - also fd.
mag nail straddles.
1°-13'-40" Rt.

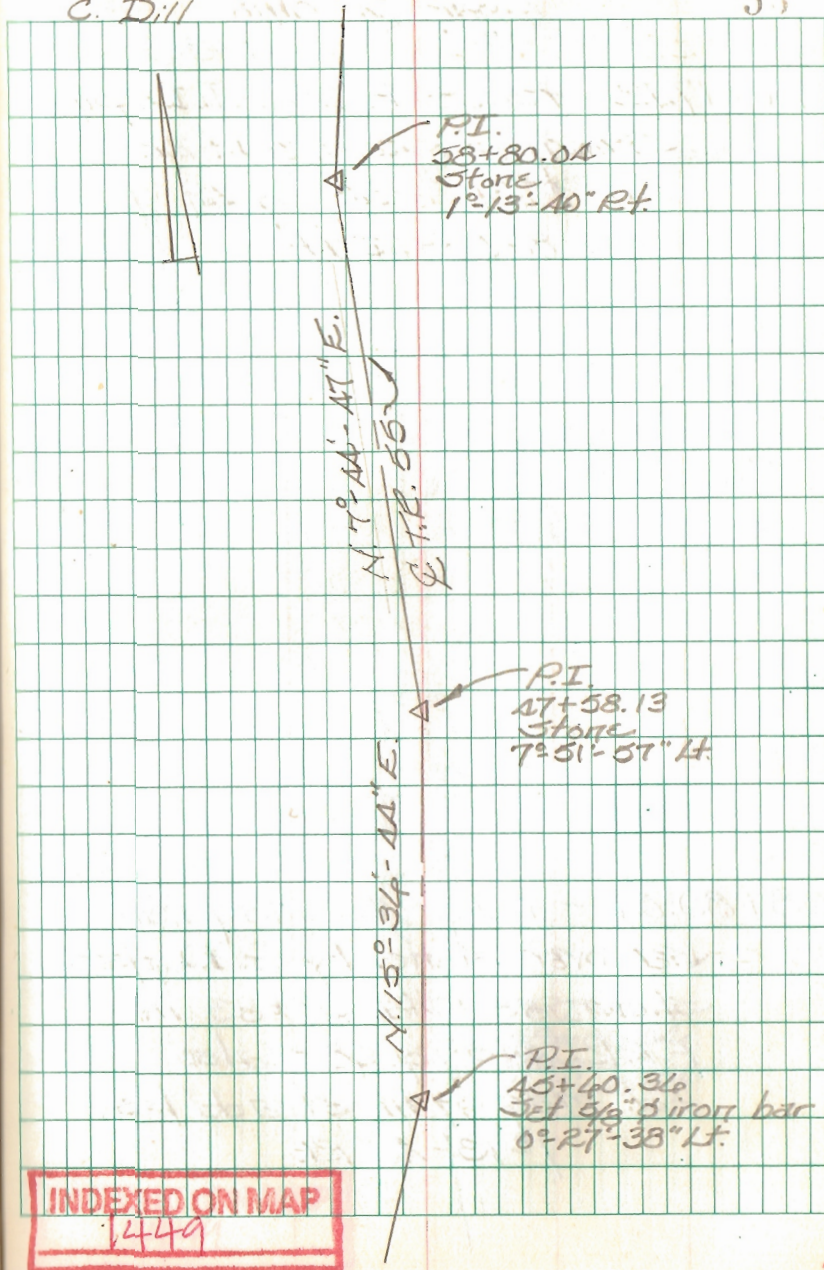
47+58.13 - P.I. - Fd. mag nail
set over stone by G. Dappert -
shown as Sta. 47+41 in
F.R.K. # 513, pg. 47 - also fd.
mag nail straddles.
7°-51'-57" Lt.

45+40.36 - P.I. - Fd. PK nail here -
Dug for I. Pipe as per
notes - no luck - Set
5/8" dia. capped iron bar.
Ref: F.R.K. # 513, pg. 47.
0°-27'-38" Lt.

B. Simmons
G. Dappert
C. Dill

March 2010

53



FB 712

T.R. 55
Jefferson Twp.
Logan Co., Ohio

4A+17.12 - P.I. - Fd. 3/4" I.D. pipe -
shown as Sta. 4A+22.3
in F.Bk. # 513, pg. 49
8°-03'-14" Lt.

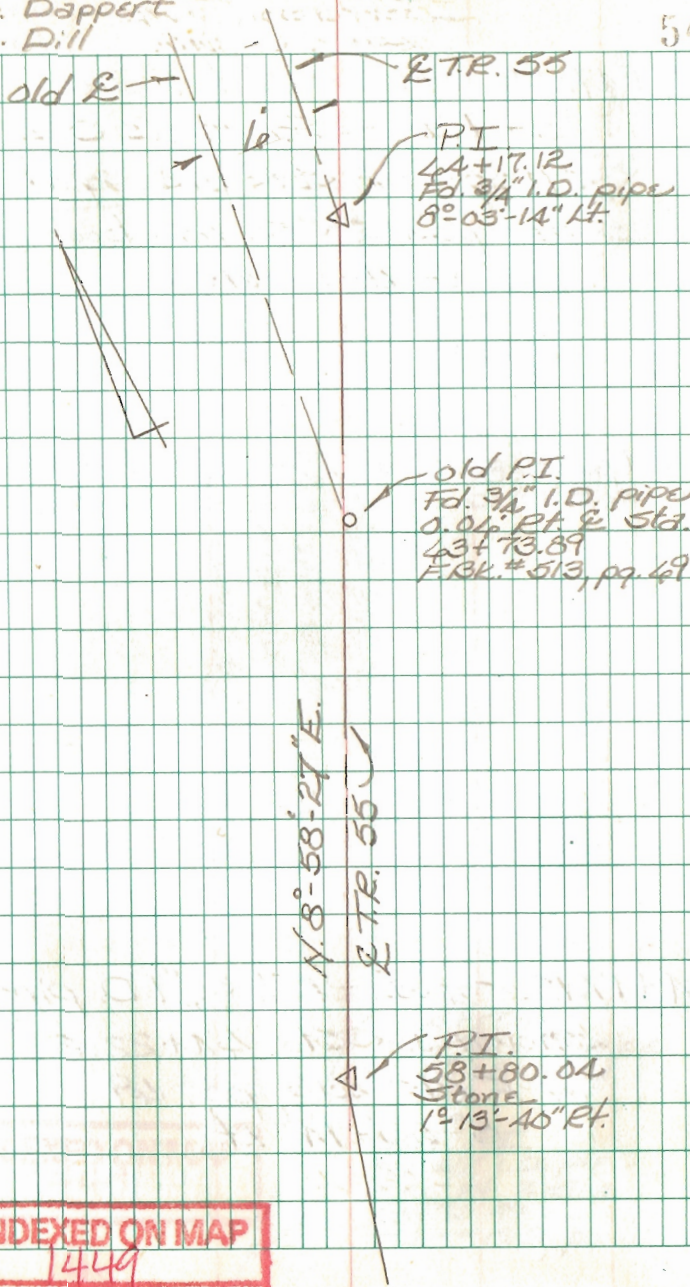
58+80.04 - P.I. - Fd. mag nail
set over stone by G. Dappert -
shown as Sta. 58+83 in
F.Bk. # 513, pg. 48 - also
fd. mag nail straddles.
1°-13'-10" Rt.

INDEXED ON MAP
1449

B. Simmons
G. Dappert
C. Dill

March 2010

54



FB 712

T.R. 55
Jefferson Twp.
Logan Co., Ohio

79+17.48 - P.I. - Set 1" dia.
iron bar - shown as Sta.
79+55 in F.Bk. # 513, pg. 71.
(See pgs. 48-50 this book.)
End of this survey

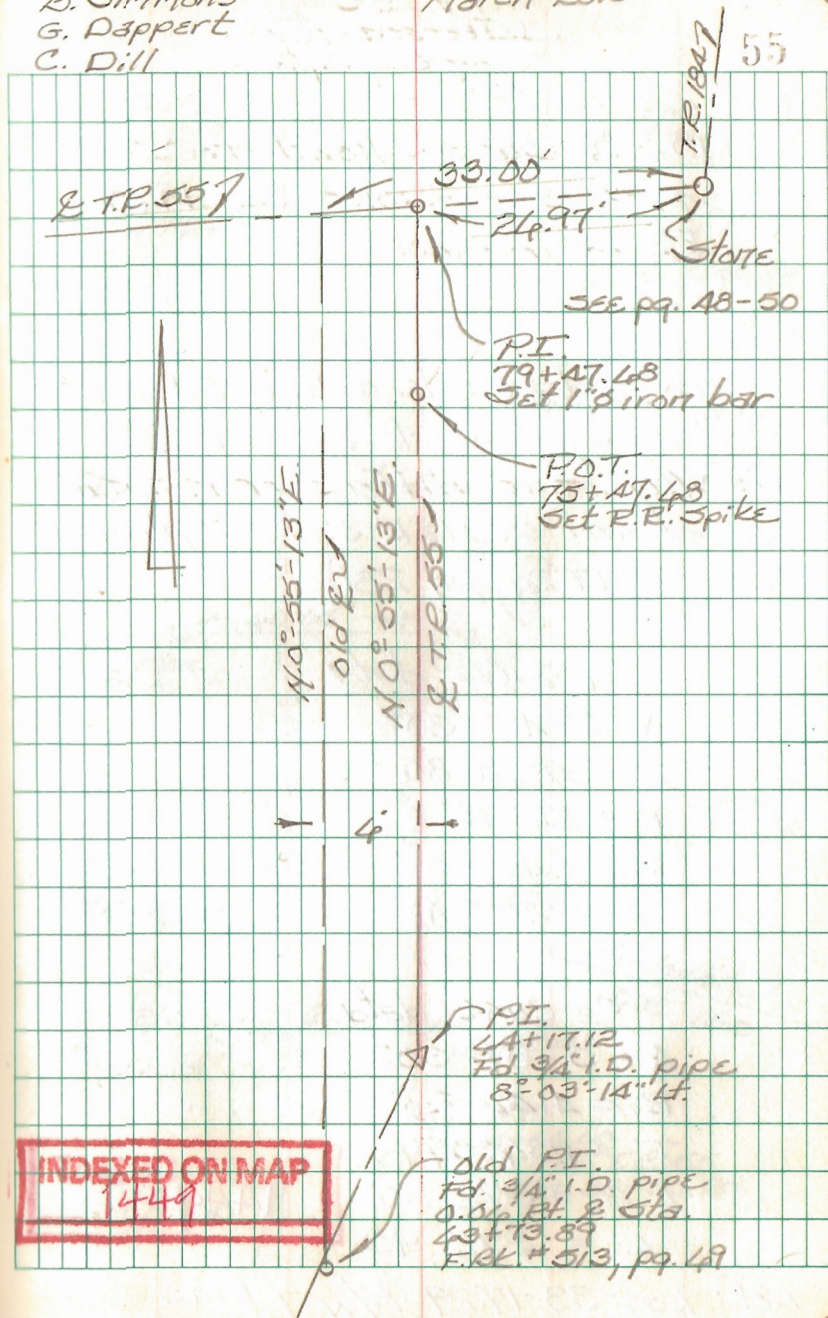
75+17.48 - P.O.T. - Set R.R. Spike

4A+17.12 - P.I. - Fd. 3/4" I.D. pipe -
shown as Sta. 4A+22.3
in F.Bk. # 513, pg. 49
8°-03'-14" Lt.

INDEXED ON MAP

B. Simmons
G. Dappert
C. Dill

March 2010



FB 712

T.R. 55
Jefferson Twp.
Logan Co., Ohio

O.D.O.T. Survey used for
easement acquisitions for 1960
U.S. Rt. 33 project.

Note:

I had trouble getting O.D.O.T.'s
stationing to work out which
is why mine differs from what
is shown on USR 33 R/W plans
(Log 33-17.29, pg. 281).

C₁ curve data

$$\Delta = 8^{\circ} - 42' - 30''$$

$$R = 2844.80$$

$$T = 218.13'$$

$$L.C. = 435.00'$$

$$L = 435.42'$$

C₂ curve data

$$\Delta = 5^{\circ} - 09' - 30''$$

$$R = 4142.24'$$

$$T = 184.59'$$

$$L.C. = 372.80'$$

$$L = 372.93'$$

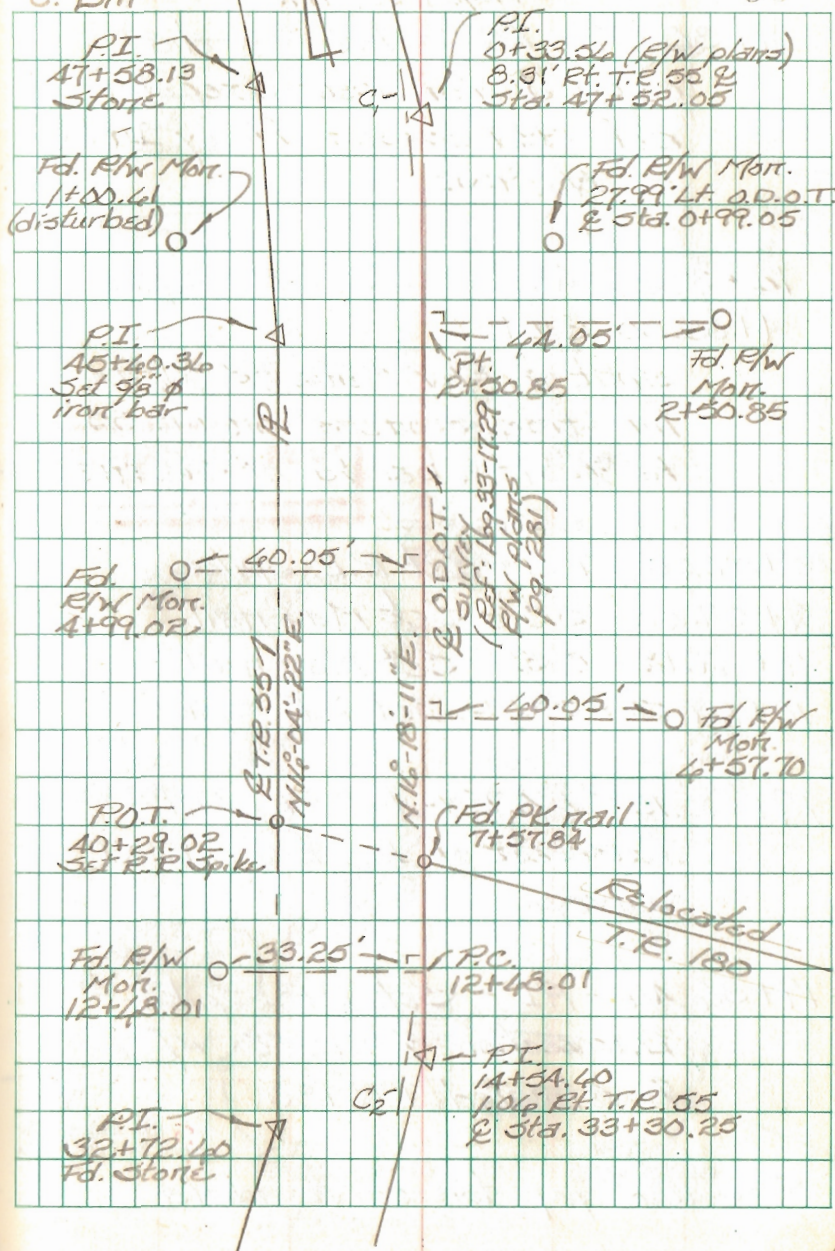
INDEXED ON MAP
1449

Ref: Log 33-17.29 R/W plans

B. Simmons
G. Dappert
C. Dill

March 2010

56



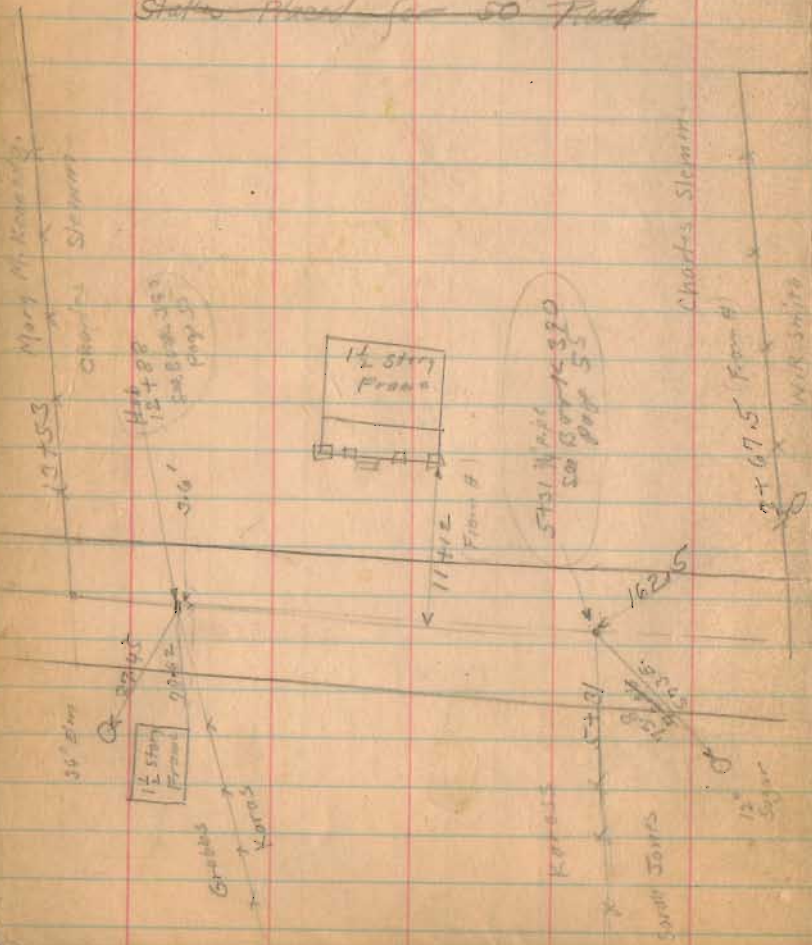
FB 513

Road 55 Jefferson Trp

60' Road Record Vol. 4 Page 186 1835

See Book 555 Page 65 for Road 55 East.

~~Status Planned for 50' Road~~



Map 19-1935
W. H. Wright
K. B. Short

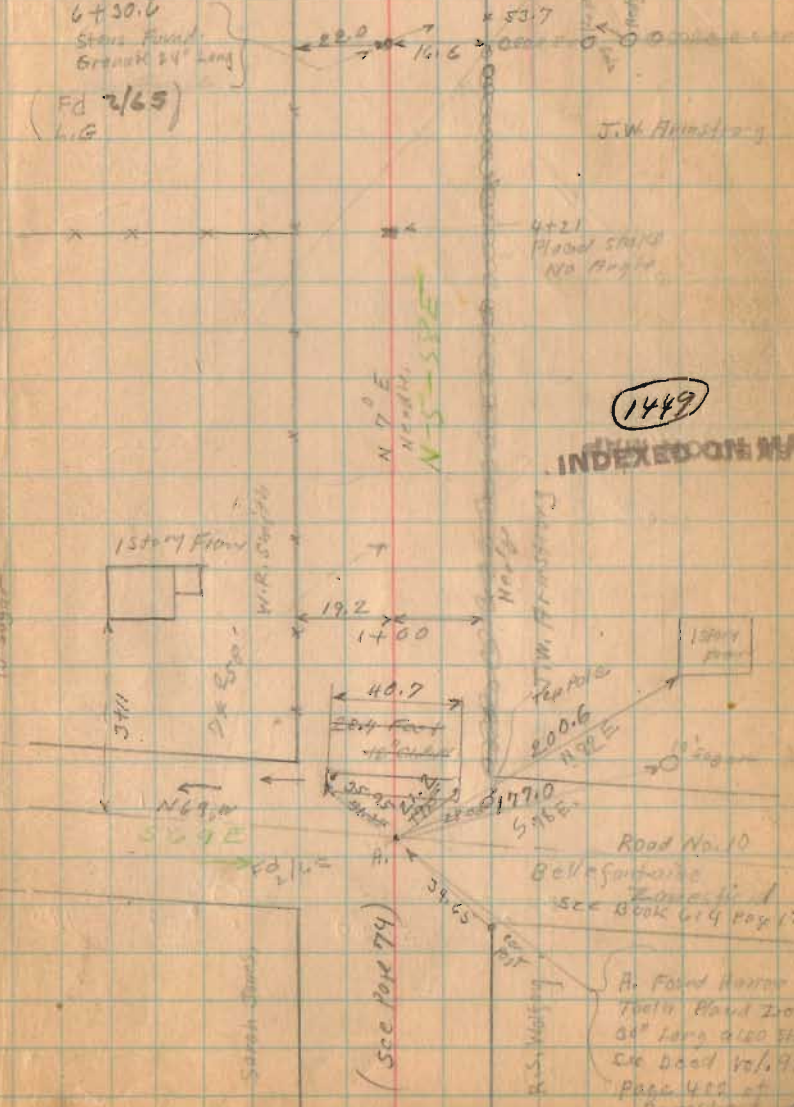
61

Arthur E. Eugene

W — E

0°-16' left
6+30.6
Stave Fixed
Branch 24' long

(FB 2/65)
W.R.G.



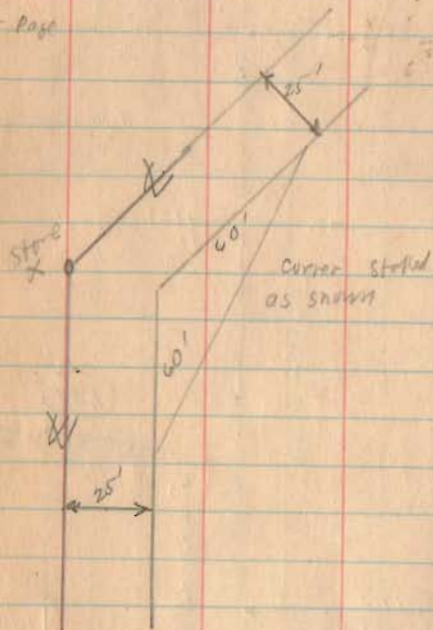
INDEXED BOOK 555

A. Found Hammer
Tenth Round Iron
60' long also 30g
see book vol. 91
Page 422 of
Grasshopper

FB 513

Road 55

H - Page

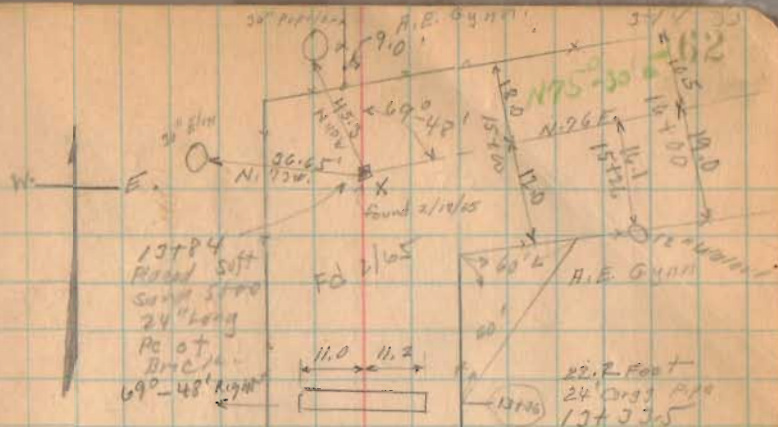


Posts:

553.0

Painted Stone

776

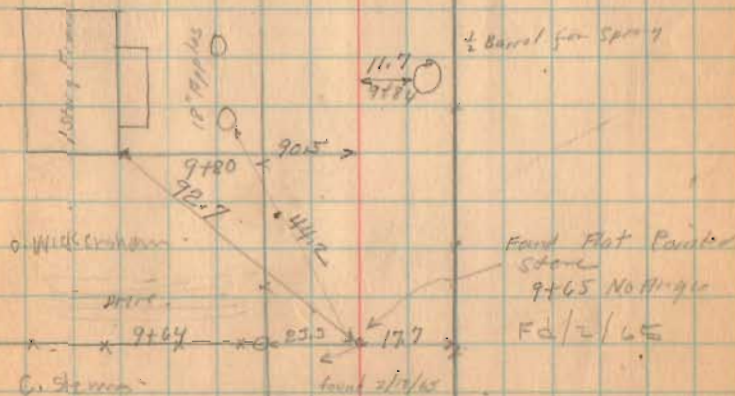


E.L. Miller

11764

O. Wickstrom

INDEXED ON MAP

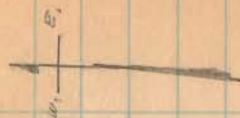


FB 513

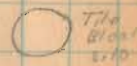
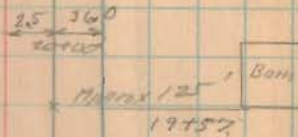
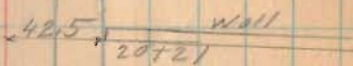
Flood 55

9-18-33

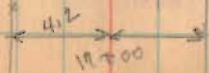
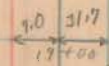
63



N 25° 30' E



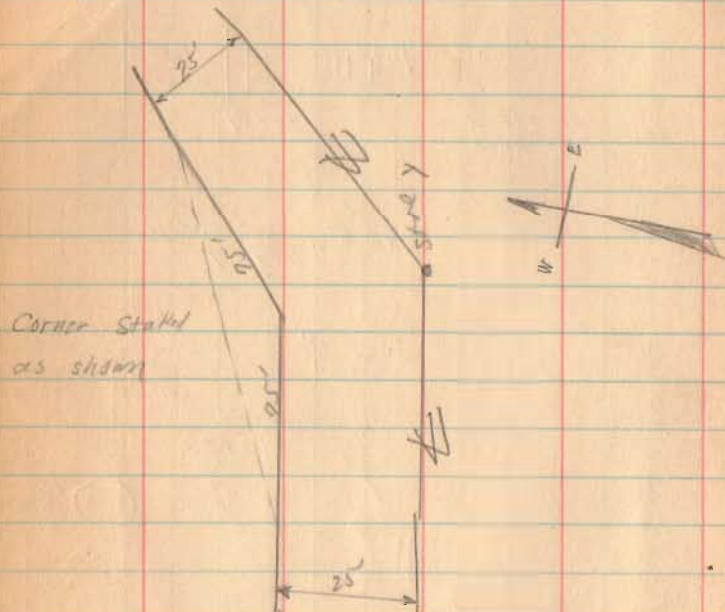
(Left of Both Panels)



1449 INDEXED ON MAP

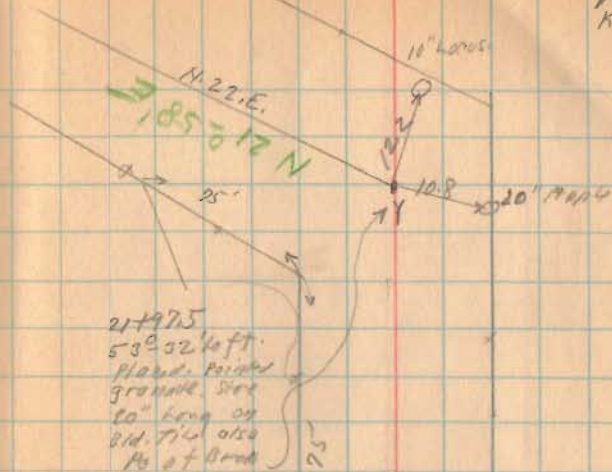
FB 513

Road 55



1449
INDEXED ON MAP

March 15 - 1933
Cold Wind
Whiff
V. DeFrank
K.B. Short



N 75° 30' E

FB 513

Road 55

3-15-53

65

27+54

31.20
27+25

26+69

26+12

25+84

25+56

25+17

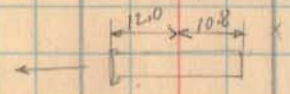
29.9
25+00

24+72

10" Apples

3" Apples

19.20
26+42 to 10" Apples
19.20
26+13 to 10" Apples



24+24
20" 1/2 7/16
Bells down stream

N 21° 25' E

1449
INDEXED ON MAP

FB 513

Road 55

3274
Stone Found
June - 7 - 1952
F.F. Wright
Grover Wilgus
Placed 2' x 2' at
over stone
Now witness to
5' W. cherry
and car post
26.3 To Post

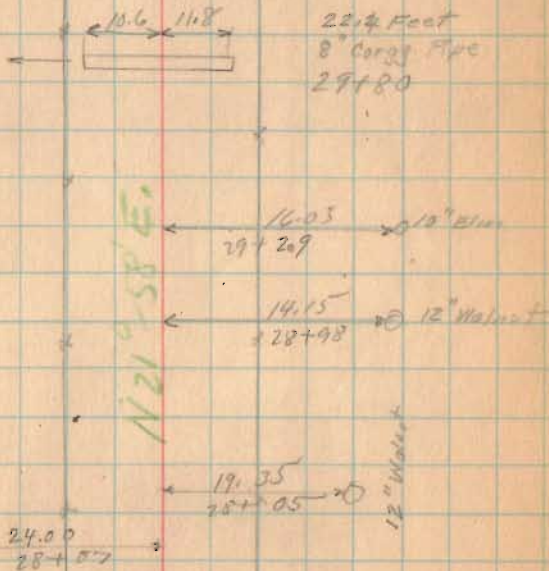
Note: This dist.
measured 381.7
May 5. 1959

See Road File # 55.
For witness points found by
state Hwd. Dept.

1449

INDEXED ON MAP

3274 - 6
Flood Stone on Creek
Bar and pc. of 4.711
Measured 407.55 as
per deed.
Out large hole
for old stone.



J-15-55

66

Found May 1959

Road No. 180

Strip
Barlup
Guyatt

Stone Found
Tilt Pins
Hester Deed
Vol. 147
Page 112

N 21° 58' E

N 21° 58' E

N 21° 58' E

20' up

12" Walnut

12" Walnut

12" Walnut

12" Walnut

12" Walnut

12" Walnut

12" Walnut

12" Walnut

12" Walnut

12" Walnut

12" Walnut

FB 513

Road 55

$$\begin{array}{r} 100 \\ 19 \\ \hline 119 \\ 200 \\ 19 \\ \hline 219 \\ 300 \\ 19 \\ \hline 319 \\ 400 \\ 19 \\ \hline 419 \\ 500 \\ 19 \\ \hline 519 \\ 600 \\ 19 \\ \hline 619 \\ 700 \\ 19 \\ \hline 719 \\ 800 \\ 19 \\ \hline 819 \\ 900 \\ 19 \\ \hline 919 \end{array}$$

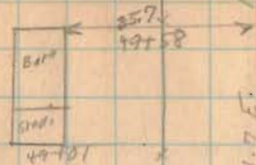
$$\begin{array}{r} 100 \\ 19 \\ \hline 119 \\ 200 \\ 19 \\ \hline 219 \\ 300 \\ 19 \\ \hline 319 \\ 400 \\ 19 \\ \hline 419 \\ 500 \\ 19 \\ \hline 519 \\ 600 \\ 19 \\ \hline 619 \\ 700 \\ 19 \\ \hline 719 \\ 800 \\ 19 \\ \hline 819 \\ 900 \\ 19 \\ \hline 919 \end{array}$$

INDEXED ON MAP.

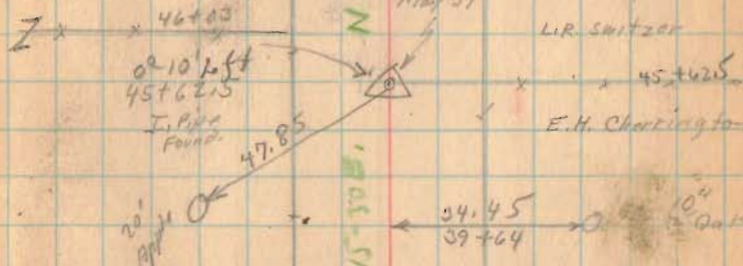
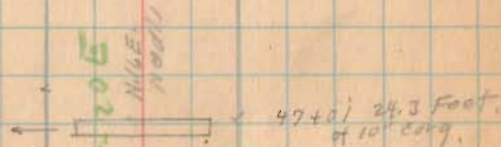
1449

3-15-33

67



47+61
 Found stone
 PC of Iron
 Road Tilt PC
 - 7' 58" left
 Found May 1959



Found May 59
 L.R. Switzer
 45+62.5
 E.H. Cherington



FB 513

Road 55

650 road
26
626

1449
INDEXED ON MAP

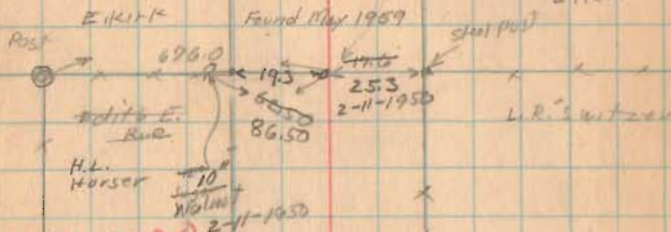
3-15-33

68

V.M.S. 5738

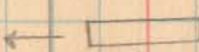
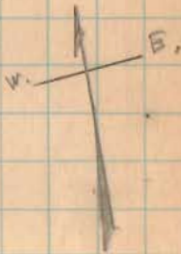
N.7E
N.8-14E

12-12' Right
58+83
Found Stone



V.M.S. 3220

N.7-72E



52+71
14" Wood Box

FB 513

Road. 55

Note. May-2-1933

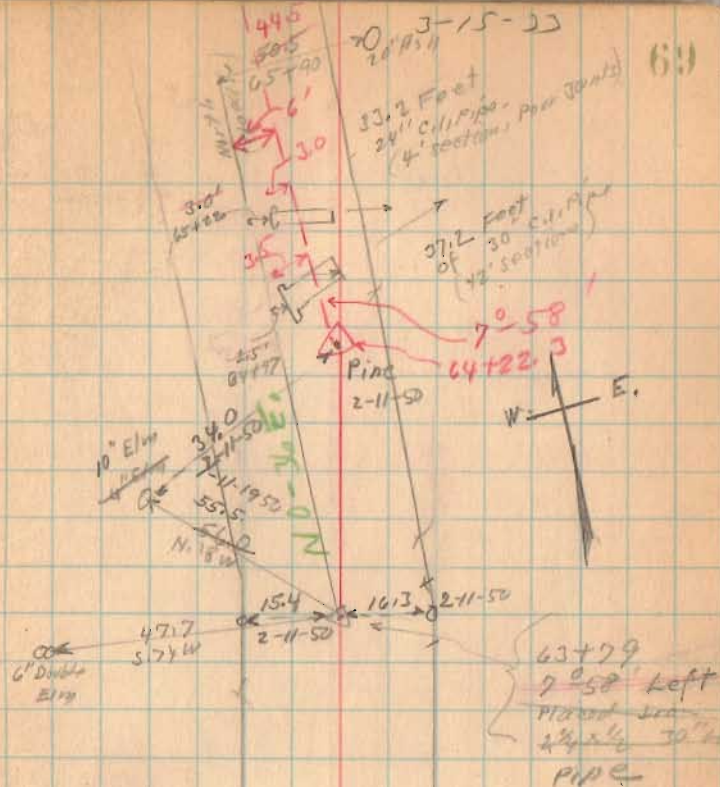
P.L. Point 63+79 was
moved ahead as shown.
New line 6 Feet East
and Parallel to old.
No angle at 63+79
Iron at 63+79 Not Moved

$\cos 7^{\circ} 58'$
7.215
 $6.0 \rightarrow 64+22.3$
 $(6 \times 7.215) = 43.3$

63+79

1449

INDEXED ON MAP



N. 8-34 E.

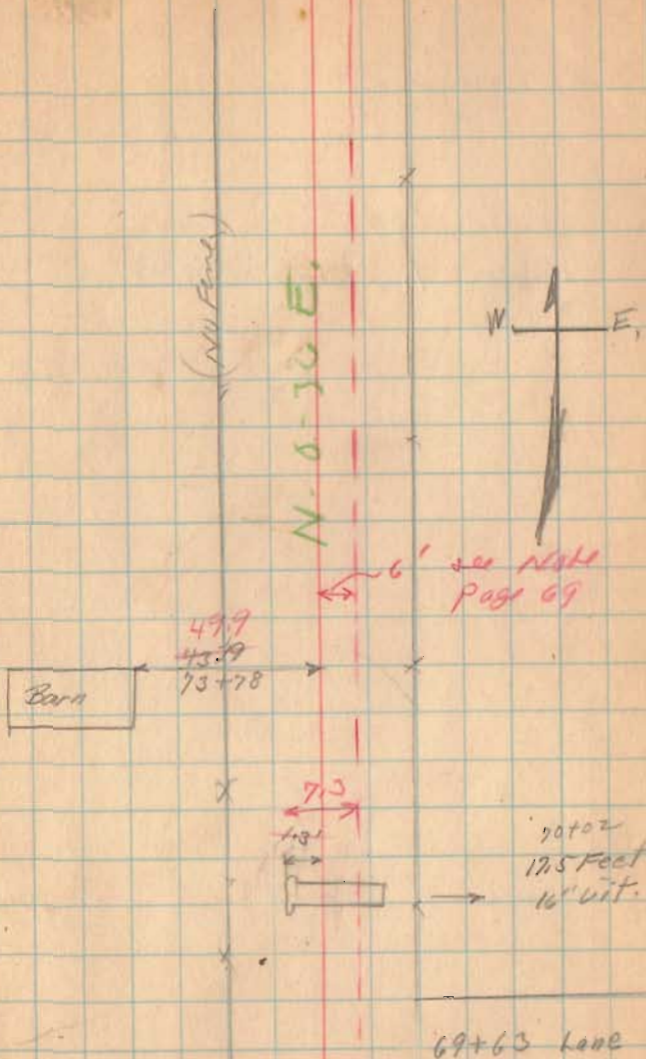
FB 513

Road 55

1449
INDEXED ON MAP

3-15-33

70



FB 513

Road 55

Length 9955 Feet

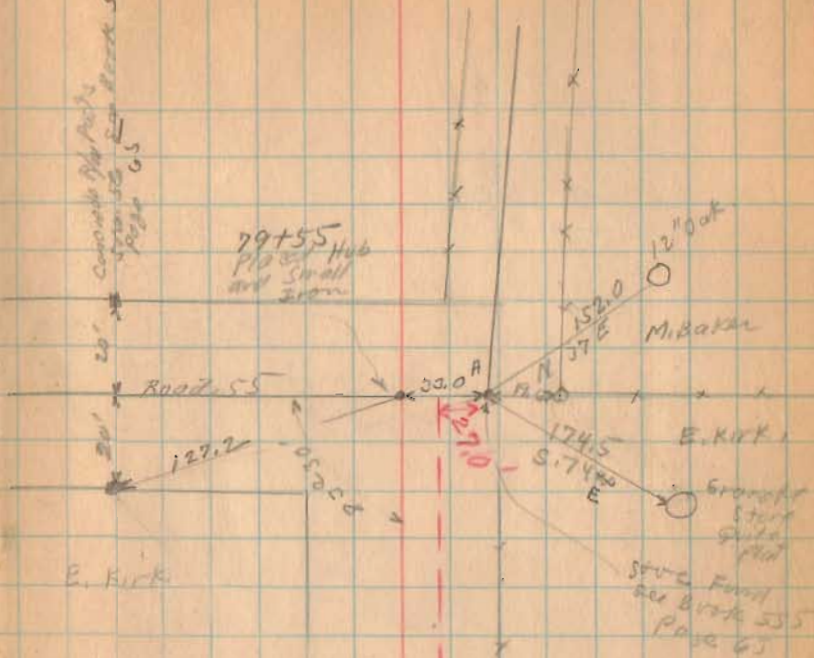
Length 1.5066 Miles

7449
INDEXED ON MAP

3-15-53

71

26' Curvature Big Rock
15' Small
Page 65



E. Kirk

Grandpa's Store
S. 74° E
174.5
12' Oak
152.0
57° E
Page 65

~~NO-X-E~~
NO-X-E



6' see NAM
Page 69