

BALDWIN SURVEY

V.M.S. 3441

JEFFERSON TOWNSHIP

MAY 18, 1956

The following described real estate situated in Jefferson Township, Logan County, Ohio and being part of Virginia Military Survey 3441 and more particularly described as follows:

Beginning at a stone in the center of County Highway No. 25 at Sta. 51 + 03 as shown on page 32 of the Logan County Engineers' field book #575, said stone being the northeast corner of O. E. Taits' 104.25 acre tract; thence with said Taits' north line S. 87°-39' W. 1986.0 feet to an iron pin at the southeast corner of Richard N. Mac Crackens' 69.68 acre tract; thence with said Mac Crackens' east line N. 7°-19' W. 1174.1 feet to an iron pin; thence N. 85°-49' E. 2061.8 feet to an iron pin in the center of said C. H. #25; thence with said center line S. 8°-00' E. 1017.6 feet to an iron pin (Sta. 53-37.3); thence S. 15°-50' W. 234.7 feet to the place of beginning.

Containing 57.00 acres more or less.

The above described tract being 57.00 acres off the south end of Neil J. Detricks' 96.00 acre tract.

5-87-39

on Plat

2824

ID

INDEXED ON MAP

BALDWIN SURVEY
JEFFERSON TOWNSHIP

May 1956

Scale: 1" = 10 chains = 660'

V.M.S. 3441
V.M.S. 3327



INDEXED ON MAP

2824 1P

$\frac{7}{8}$ " #1 Iron
Set in fence line

N. 85° 49' E. 8001.8

Robt. Baldwin Survey
Jefferson Twp
U.M.S. 3441

N. 7° 19' W. 1174.1'

S. 87° 09' W.

Poor fence

No corner post
Dug & found evidence
of post set $\frac{7}{8}$ " #1 Iron

INDEXED ON MAP
2824

Dadson
McGinnis
Brobson

May 15-16-17, 1956

69

Neil Detrick

Post

21.1

$\frac{7}{8}$ " #1 Iron
Set

57.00 A.

S. 5° 00' E.
1077.6

C.H. 25

Dug for
Iron
to look
set $\frac{7}{8}$ "
Iron
23890 ft.

1986.0'

O.E. Tait

263

large
con
found

234.7
S. 15° 30' W.

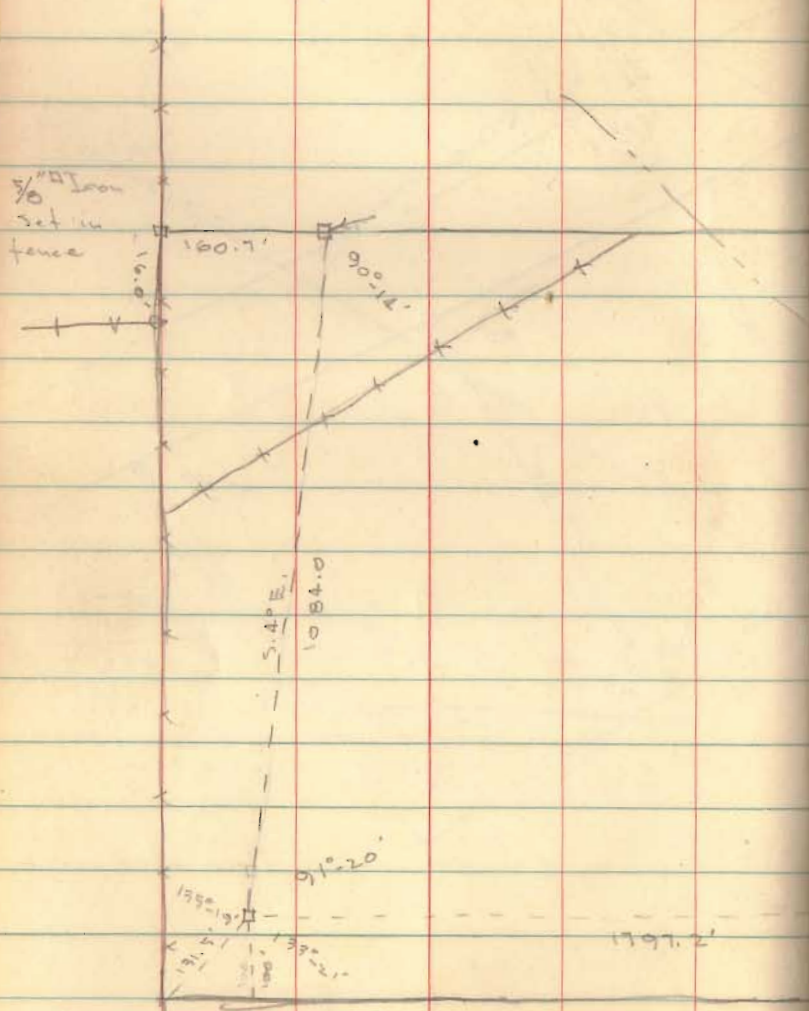
Sta. 51403

Stone & brick
Found level with
surface - 3' W. of
w. edge of metal

Robt. Baldwin Survey

U.M. S. 3441

Jefferson Twp.



INDEXED ON MAP
2824

9

